

**INDEX OF SHEETS**

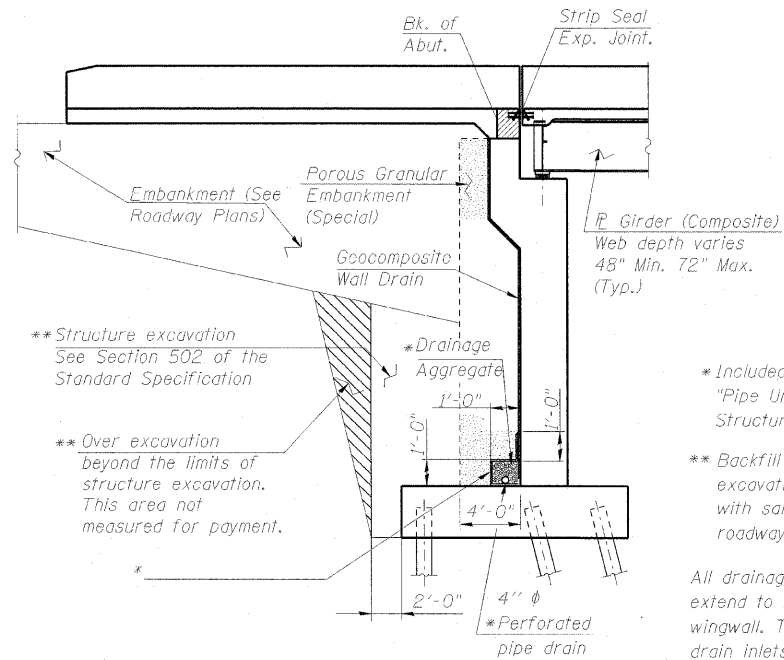
S-1 General Plan  
 S-2 General Notes and Total Bill of Material  
 S-3 Substructure Layout  
 S-4 Top of Slab Elevation Plan  
 S-5 Top of Slab Elevations - I  
 S-6 Top of Slab Elevations - II  
 S-7 Top of West Approach Slab Elevations  
 S-8 Top of East Approach Slab Elevations  
 S-9 Deck Plan  
 S-10 Deck Cross Section and Details  
 S-11 Parapet Elevations  
 S-12 Parapet Details - I  
 S-13 Parapet Details - II  
 S-14 Bridge Fence Railing Details - I  
 S-15 Bridge Fence Railing Details - II  
 S-16 Expansion Joint Details (Strip Seal)  
 S-17 Drainage Scupper, DS-II  
 S-18 Framing Plan and Girder Elevations  
 S-19 Structural Steel Details - I  
 S-20 Structural Steel Details - II  
 S-21 Bearing Details  
 S-22 West Abutment Foundation Plan  
 S-23 West Abutment Plan and Elevation  
 S-24 West Abutment Details  
 S-25 East Abutment Foundation Plan  
 S-26 East Abutment Plan and Elevation  
 S-27 East Abutment Details  
 S-28 Pier  
 S-29 Drainage System Details  
 S-30 Bar Splicer Assembly Details  
 S-31 Metal Shell Pile Details  
 S-32 Approach Slab Plan  
 S-33 Approach Slab Details  
 S-34 Boring Logs - I  
 S-35 Boring Logs - II  
 S-36 Boring Logs - III  
 S-37 Boring Logs - IV

**GENERAL NOTES**

Fasteners shall be AASHTO M164 Type 1, mechanically galvanized bolts. Bolts 7/8"  $\phi$ , holes 15/16"  $\phi$ , unless otherwise noted.  
 Calculated weight of Structural Steel = 540,180 pounds (Grade 50)  
 33,520 pounds (Grade 36)  
 No field welding is permitted except as specified in the contract documents.  
 Reinforcement bars shall conform to the requirements of ASTM A 706 Gr 60. See Special Provisions.  
 Reinforcement bars designated (E) shall be epoxy coated.  
 Bearing seat surfaces shall be constructed or adjusted to their designated elevations within a tolerance of 1/8 inch (0.01 Ft.). Adjustment shall be made either by grinding the surface or by shimming the bearings.  
 Concrete Sealer shall be applied to the designated areas of the abutments and pier.  
 The existing structural steel coating contains lead. The Contractor shall take appropriate precautions to deal with the presence of lead on this project.  
 The Inorganic Zinc Rich Primer / Acrylic / Acrylic Paint System shall be used for shop and field painting of new structural steel except where otherwise noted. The color of the final finish coat for all interior steel surfaces shall be gray, Munsell No. 5B 7/1. The color of the final finish coat for the exterior and bottom flange of the fascia beams shall also be gray, Munsell No. 5B 7/1. See Special Provision for "Cleaning and Painting New Metal Structures".  
 The SSPC OP-1 Painting Contractor Certification will be required for this Contract.  
 The Contractor shall drive test piles to 110% of the nominal required bearing specified in production locations at substructures specified or approved by the Engineer before ordering the remainder of piles.  
 Slipforming of the parapets is not allowed.

**TOTAL BILL OF MATERIAL**

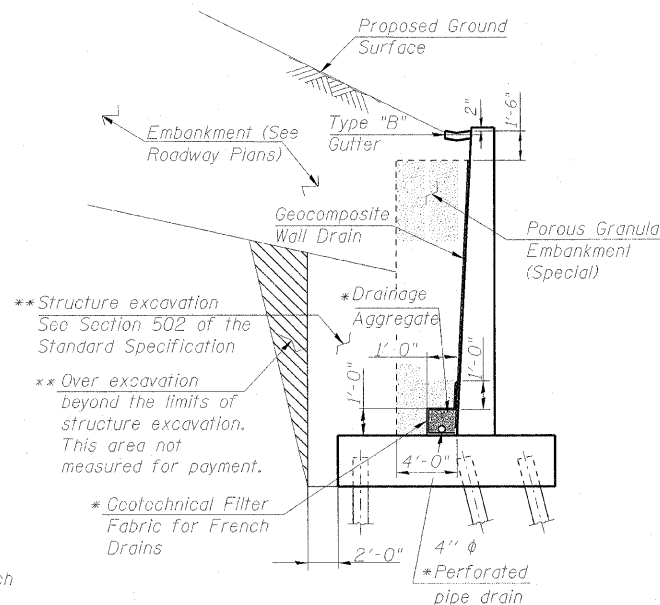
ITEM	UNIT	SUPER	SUB	TOTAL
Porous Granular Embankment, Special	Cu. Yd.		707	707
Removal of Existing Structures No. 1	Each			1
Protective Shield	Sq. Yd.	1,243		1,243
Structure Excavation	Cu. Yd.		3,013	3,013
Concrete Structures	Cu. Yd.		1,027.8	1,027.8
Concrete Superstructure	Cu. Yd.	695.7		695.7
Bridge Deck Grooving	Sq. Yd.	927		927
Form Liner Textured Surface	Sq. Ft.		3,660	3,660
Protective Coat	Sq. Yd.	1,981		1,981
Furnishing and Erecting Structural Steel	L. Sum	1		1
Stud Shear Connectors	Each	4,626		4,626
Reinforcement Bars, Epoxy Coated	Pound	153,980	132,540	286,520
Bar Splicers	Each		94	94
Bridge Fence Railing	Foot	360		360
Bridge Fence Railing (Sidewalk)	Foot	360		360
Furnishing Metal Shell Piles 14"x0.250"	Foot		11,080	11,080
Driving Piles	Foot		11,080	11,080
Test Pile Metal Shells	Each		3	3
Name Plates	Each			1
Preformed Joint Strip Seal	Foot	92		92
Elastomeric Bearing Assembly, Type II	Each	12		12
Anchor Bolts, 1 1/4"	Each	24		24
Anchor Bolts, 1 1/2"	Each	12		12
Concrete Sealer	Sq. Ft.		6,663	6,663
Geocomposite Wall Drain	Sq. Yd.		489	489
Pipe Underdrains for Structures 4"	Foot		216	216
Braced Excavation	Cu. Yd.		220	220
Mechanical Splice	Each		239	239
Pile Extraction	Each		168	168
Drainage Scuppers, DS-II	Each		4	4
Drainage System	L. Sum		1	1



(Showing Backfill and Drainage System)

- \* Included in the cost of "Pipe Underdrains for Structures"
- \*\* Backfill remainder of structure excavation and over excavation with same material specified for roadway embankment.

All drainage system components shall extend to 2'-0" from the end of each wingwall. The pipes shall drain into drain inlets as shown on Sheet S-3.



SECTION THRU WINGWALL  
(Showing Backfill and Drainage System)

STATION 79+94.10  
 BUILT 20... BY  
 STATE OF ILLINOIS  
 F.A.I. RT. 70 SEC. 82-1-IHB  
 LOADING HI. -93  
 STRUCTURE NO. 082-0378

NAME PLATE  
 See Std. 515001

FILE NAME = 882-8378_76C55_S82_GenNot.cgn	USER NAME = hnj	DESIGNED - JXH	REVISED -	<b>STATE OF ILLINOIS DEPARTMENT OF TRANSPORTATION</b>	<b>GENERAL NOTES AND TOTAL BILL OF MATERIAL EXCHANGE AVENUE OVER I-55 /70 (S.N. 082-0378)</b>	F.A.I. RTE. 70	SECTION 82-1-IHB	COUNTY ST. CLAIR	TOTAL SHEETS 236	SHEET NO. 161
PLOT SCALE = 0:1 1/2" / 1"	DRAWN - JHR	REVISIONS -	CONTRACT NO. 76C55							
PLOT DATE = 11/28/2009	CHECKED - CHY	REVISIONS -								
DATE - 10-09-09	REVISIONS -									
SCALE: SHEET NO. S-2 OF S-37 SHEETS STA. TO STA.						FED. ROAD DIST. NO. ILLINOIS FED. AID PROJECT				