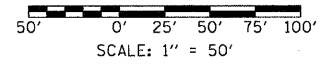
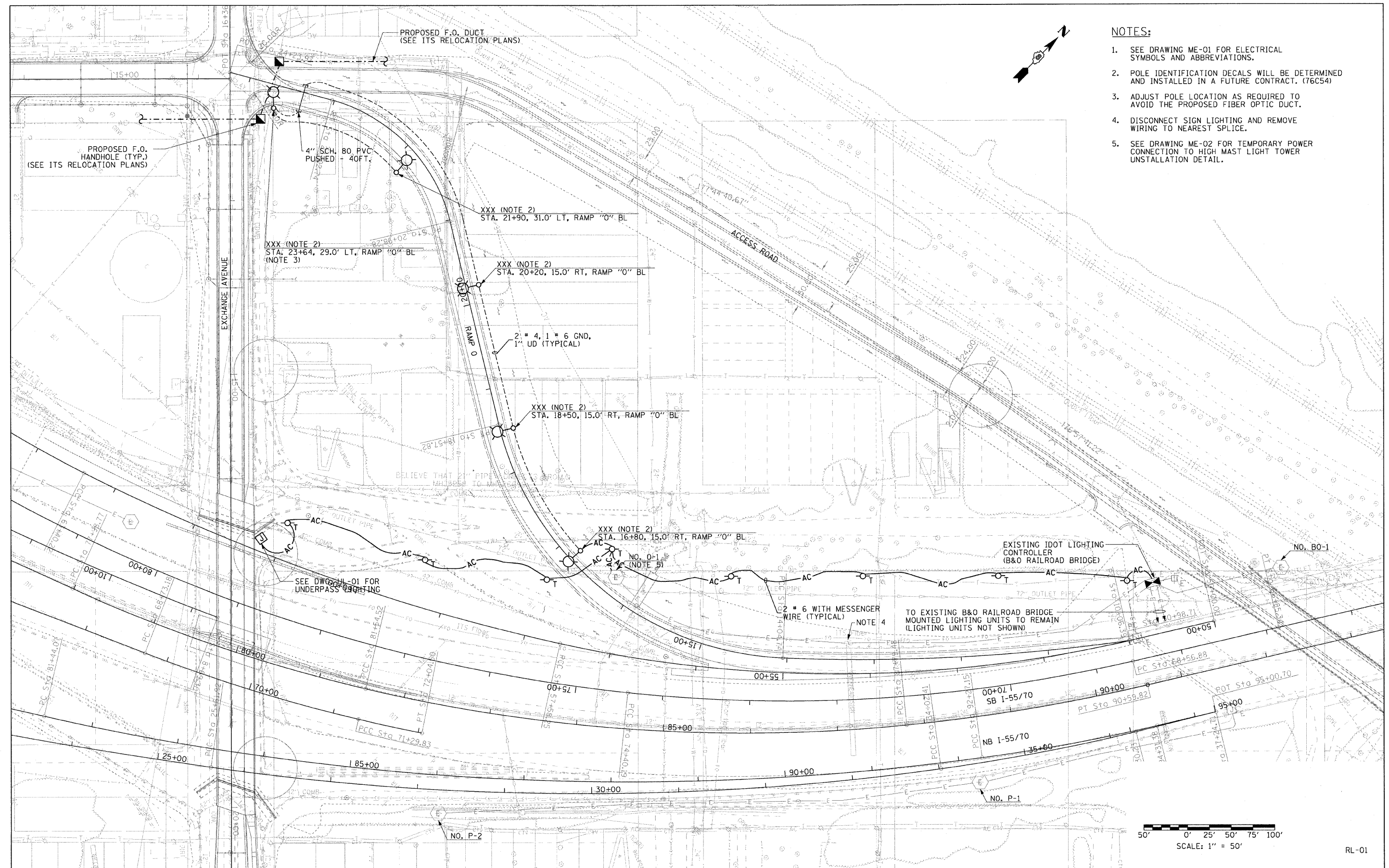


NOTES:

1. SEE DRAWING ME-01 FOR ELECTRICAL SYMBOLS AND ABBREVIATIONS.
2. POLE IDENTIFICATION DECALS WILL BE DETERMINED AND INSTALLED IN A FUTURE CONTRACT. (76C54)
3. ADJUST POLE LOCATION AS REQUIRED TO AVOID THE PROPOSED FIBER OPTIC DUCT.
4. DISCONNECT SIGN LIGHTING AND REMOVE WIRING TO NEAREST SPLICE.
5. SEE DRAWING ME-02 FOR TEMPORARY POWER CONNECTION TO HIGH MAST LIGHT TOWER UNINSTALLATION DETAIL.



RL-01

FILE NAME = DBTR1-76C55-sh-Light-03.dgn USER NAME = lantz PLOT SCALE = 58.0000' / IN. PLOT DATE = 10/13/2009	DESIGNED - JPC DRAWN - TCL CHECKED - JSF DATE - 10-09-09	REVISED - REVISED - REVISED - REVISED -	STATE OF ILLINOIS DEPARTMENT OF TRANSPORTATION	LIGHTING PLANS PROPOSED WORK	F.A.I. RTE. 70 SECTION 82-1-IHB COUNTY ST. CLAIR TOTAL SHEETS 236 SHEET NO. 140 CONTRACT NO. 76C55	
	SCALE: 1"=50' SHEET NO. 1 OF 1 SHEETS STA. 10+06.39 TO STA. 24+23.97				FED. ROAD DIST. NO. ILLINOIS FED. AID PROJECT	