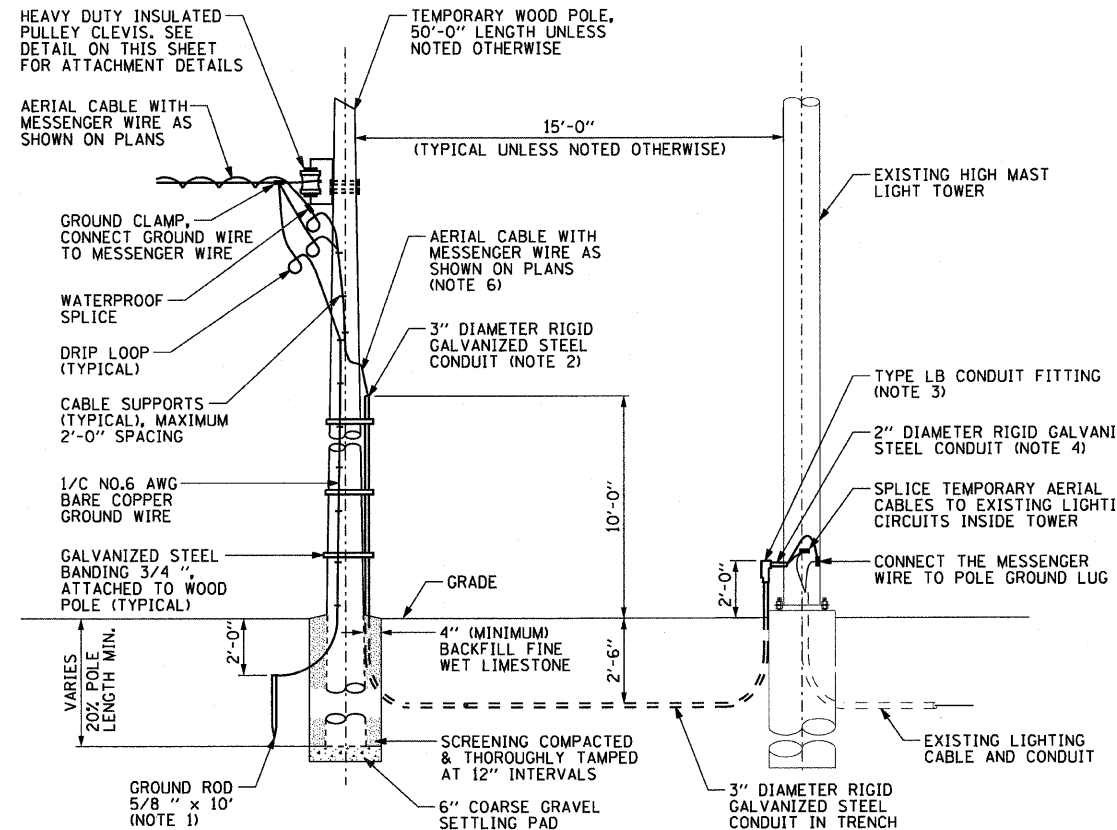
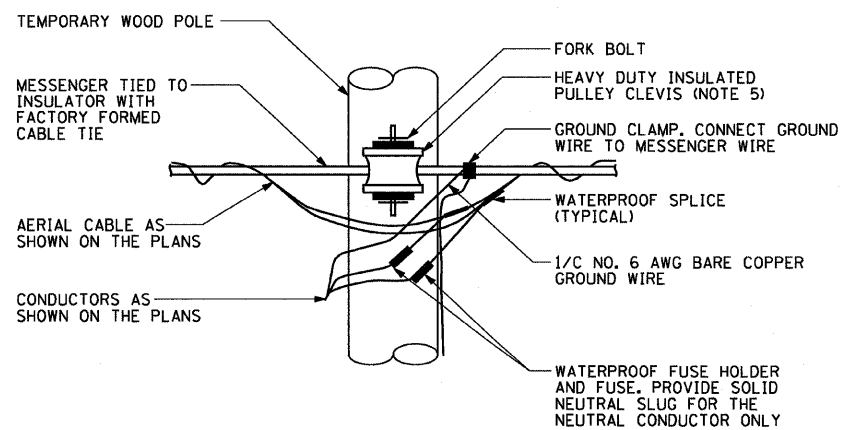


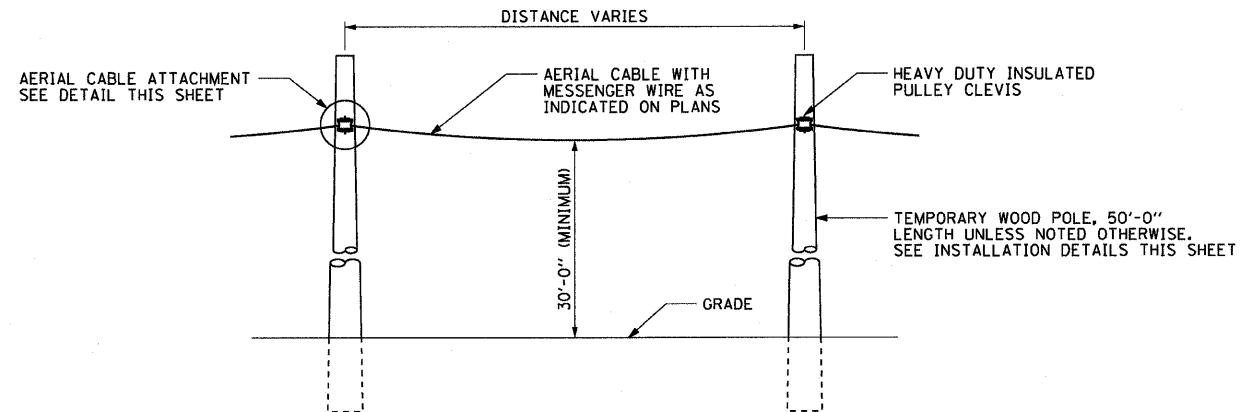
TEMPORARY WOOD END POLE INSTALLATION DETAILS
WOOD POLE INSTALLATION IS SIMILAR (NOT TO SCALE)



TEMPORARY POWER TO HIGH MAST LIGHT TOWER INSTALLATION DETAIL
(NOT TO SCALE)



TEMPORARY WOOD POLE AERIAL CABLE ATTACHMENT DETAIL
(NOT TO SCALE)



AERIAL CABLE INSTALLATION DETAIL
(NOT TO SCALE)

NOTES:

1. GROUND RODS SHALL BE INSTALLED FOR ALL TEMPORARY WOOD POLES PROVIDING TEMPORARY POWER TO HIGH MAST LIGHT TOWERS AND AT THE END OF AN AERIAL RUN AS SHOWN ON THIS DRAWING.
2. RIGID STEEL CONDUIT ATTACHED TO TEMPORARY WOOD POLE. PROVIDE A CONDUIT SEALING BUSHING. THE BUSHING MUST BE AS MANUFACTURED BY O-Z GEDNEY, TYPE CSBG OR APPROVED EQUAL. THIS WORK, INCLUDING ALL FITTINGS, BUSHINGS, SUPPORT STRAPS AND HARDWARE WILL BE INCLUDED FOR PAYMENT UNDER THE APPROPRIATE TEMPORARY WOOD POLE PAY ITEM.
3. TYPE LB CONDUIT FITTING WILL BE INCLUDED FOR PAYMENT UNDER THE "CONDUIT IN TRENCH, 3" DIA., GALVANIZED STEEL" PAY ITEM.
4. CONTRACTOR MUST DRILL THE EXISTING HIGH MAST LIGHT TOWER TO INSTALL THE 2" DIAMETER GALVANIZED STEEL CONDUIT INTO THE TOWER AS SHOWN. PROVIDE A WATERTIGHT CONDUIT FITTING FOR INSTALLATION OF CONDUIT INTO EXISTING HIGH MAST LIGHT TOWER. THIS WORK WILL BE INCLUDED FOR PAYMENT UNDER THE "CONDUIT IN TRENCH, 3" DIA., GALVANIZED STEEL" PAY ITEM.
5. HEAVY DUTY INSULATED PULLEY CLEVIS AND ALL ASSOCIATED HARDWARE REQUIRED FOR A COMPLETE INSTALLATION WILL BE INCLUDED FOR PAYMENT UNDER THE APPROPRIATE TEMPORARY WOOD POLE PAY ITEM.
6. CONTRACTOR MUST PROVIDE ALL HARDWARE NECESSARY FOR A COMPLETE INSTALLATION.

FILE NAME = DBTRI-76C55-sh1-Light-02.dgn	USER NAME = lantzt	DESIGNED - JPC	REVISED -
		DRAWN - TCL	REVISED -
	PLOT SCALE = 1:8000 1/2 IN.	CHECKED - JSF	REVISED -
	PLOT DATE = 10/7/2009	DATE - 10-09-09	REVISED -

**STATE OF ILLINOIS
DEPARTMENT OF TRANSPORTATION**

**LIGHTING DETAILS
TEMPORARY POWER AND WOOD POLE DETAILS**

SCALE: NONE SHEET NO. 1 OF 1 SHEETS STA. N/A TO STA. N/A

F.A.I. RTE. 70	SECTION 82-1-IHB	COUNTY ST. CLAIR	TOTAL SHEETS 236	SHEET NO. 139
FED. ROAD DIST. NO.		ILLINOIS FED. AID PROJECT		