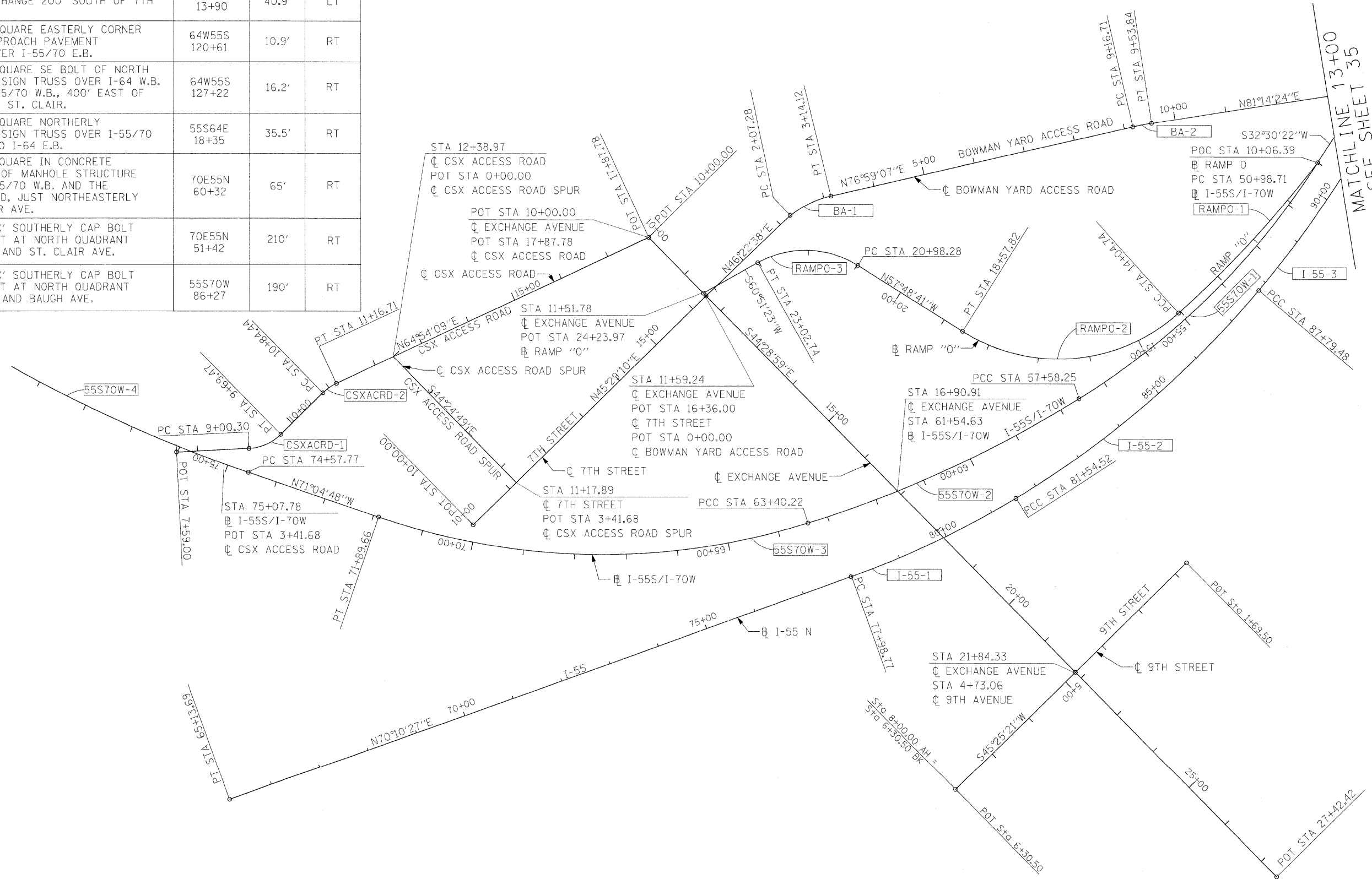


BENCHMARKS

BENCHMARK	EL	DESCRIPTION	STATION	OFFSET	SIDE
RFS 13	419.81	CUT "X" ON NORTH CAP BOLT OF FIRE HYDRANT SOUTHERLY QUAD. 9TH STREET & EXCHANGE.	9TH STREET 5+40	40.7'	LT
RFS 21	419.80	CUT "X" ON NORTHERLY CAP BOLT EAST SIDE OF EXCHANGE 200' SOUTH OF 7TH STREET.	EXCHANGE 13+90	40.9'	LT
BM DAS9	421.63	CHISELLED SQUARE EASTERLY CORNER OF EAST APPROACH PAVEMENT I-64 W.B. OVER I-55/70 E.B.	64W55S 120+61	10.9'	RT
BM DAS10	432.47	CHISELLED SQUARE SE BOLT OF NORTH FOUNDATION SIGN TRUSS OVER I-64 W.B. RAMP TO I-55/70 W.B., 400' EAST OF BRIDGE OVER ST. CLAIR.	64W55S 127+22	16.2'	RT
BM JD4	403.40	CHISELLED SQUARE NORTHERLY FOUNDATION SIGN TRUSS OVER I-55/70 W.B. RAMP TO I-64 E.B.	55S64E 18+35	35.5'	RT
BM 25	429.43	CHISELLED SQUARE IN CONCRETE FOUNDATION OF MANHOLE STRUCTURE BETWEEN I-55/70 W.B. AND THE CSX RAILROAD, JUST NORTHEASTERLY OF ST. CLAIR AVE.	70E55N 60+32	65'	RT
BM 26	423.65	CHISELLED 'X' SOUTHERLY CAP BOLT FIRE HYDRANT AT NORTH QUADRANT 2ND STREET AND ST. CLAIR AVE.	70E55N 51+42	210'	RT
BM 27	419.77	CHISELLED 'X' SOUTHERLY CAP BOLT FIRE HYDRANT AT NORTH QUADRANT 2ND STREET AND BAUGH AVE.	55S70W 86+27	190'	RT



FILE NAME =	USER NAME = #USER#	DESIGNED - RRV	REVISED -	STATE OF ILLINOIS DEPARTMENT OF TRANSPORTATION	ALIGNMENTS, TIES, AND BENCHMARKS	F.A.J. RTE.	SECTION	COUNTY	TOTAL SHEETS	SHEET NO.	
#FILEL		DRAWN - KNW	REVISED -			70	82-2-1HB	ST. CLAIR	236	34	
PLOT SCALE = #SCALE#		CHECKED - DRH	REVISED -			CONTRACT NO. 76C55					
PLOT DATE = #DATE#		DATE - DECEMBER 18, 2009	REVISED -			ILLINOIS FED. AID PROJECT					
SCALE: 1"=100'	SHEET NO. 1 OF 5 SHEETS	STA.	TO STA.								