

STATE OF ILLINOIS
DEPARTMENT OF TRANSPORTATION

DIVISION OF HIGHWAYS

PROPOSED
HIGHWAY PLANS

FAP ROUTE 777 (IL 185)
SECTION D7 HMA SAFETY SHLD 2010-1
PROJECT: ACHSIP-0777(017)
SAFETY IMPROVEMENTS
FAYETTE COUNTY

C-97-013-10

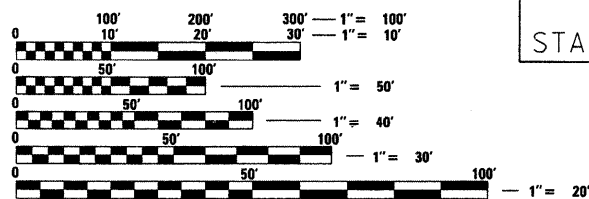
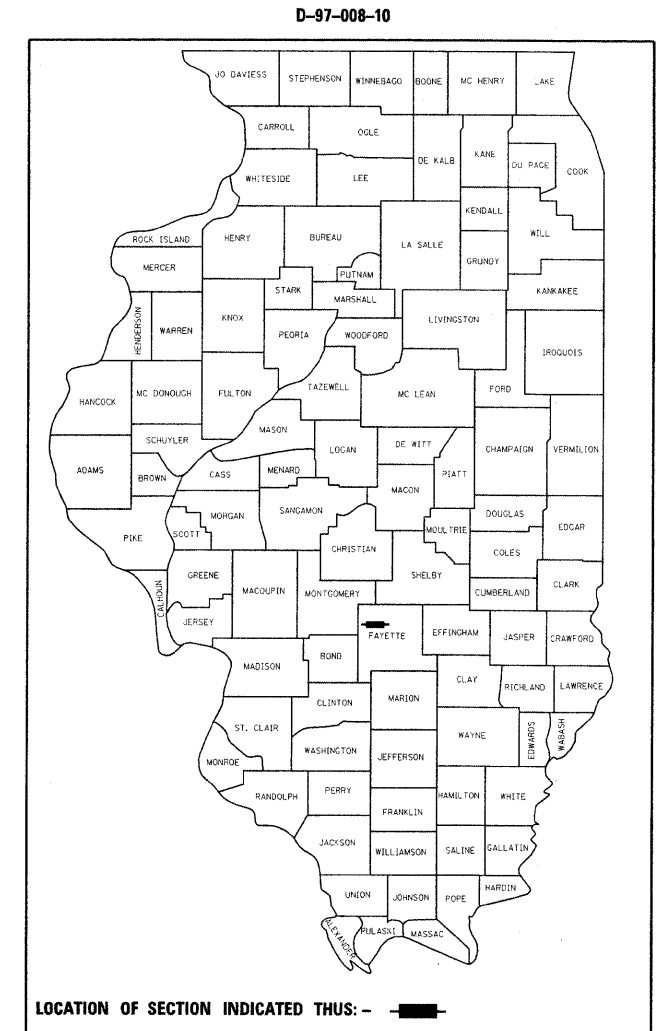
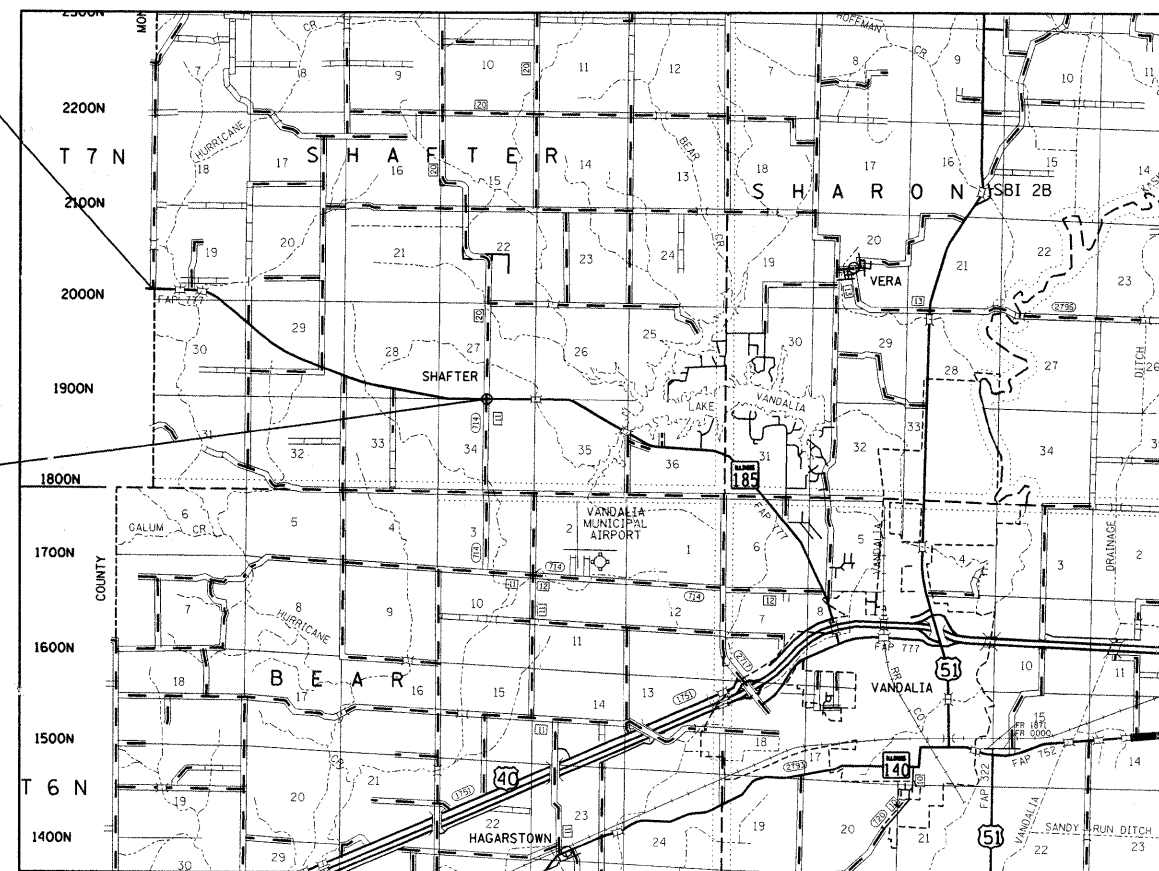
FOR INDEX OF SHEETS, SEE SHEET NO.

BRIDGE OMISSION

STR. NO. 026-0101
STA. 900+36 TO STA. 902+50
STR. NO. 026-0051
STA. 911+42.88 TO STA. 911+77.12

PROJECT
BEGINS
STA 888+52

PROJECT
ENDS
STA 1089+78



FULL SIZE PLANS HAVE BEEN PREPARED USING STANDARD ENGINEERING SCALES. REDUCED SIZED PLANS WILL NOT CONFORM TO STANDARD SCALES. IN MAKING MEASUREMENTS ON REDUCED PLANS, THE ABOVE SCALES MAY BE USED.

J.U.L.I.E.
JOINT UTILITY LOCATION INFORMATION FOR EXCAVATION
1-800-892-0123
OR 811

PROJECT ENGINEER: MARK DAUGHERTY
PROJECT MANAGER: JOYCE HEMMEN

CONTRACT NO. 74428

GROSS LENGTH = 20126 FT. = 3.812 MILE
NET LENGTH = 19878 FT. = 3.765 MILE

STATE OF ILLINOIS
DEPARTMENT OF TRANSPORTATION
DIVISION OF HIGHWAYS

SUBMITTED November 3, 2009

Roger L. Swickell
DEPUTY DIRECTOR OF HIGHWAYS, REGION ENGINEER

Charles G. Ingersoll
ENGINEER OF DESIGN AND ENVIRONMENT

Christine M. Reed
DIRECTOR OF HIGHWAYS, CHIEF ENGINEER

PRINTED BY THE AUTHORITY
OF THE STATE OF ILLINOIS

F.A.P. RTE.	SECTION	COUNTY	TOTAL SHEETS	SHEET NO.
777		Fayette	6	1
		ILLINOIS CONTRACT NO. 74428		

*D7 HMA SAFETY SHLD 2010-1

GENERAL NOTES

THIS SECTION SHALL BE CONSTRUCTED IN ACCORDANCE WITH THE PLANS; THE "STANDARD SPECIFICATIONS FOR ROAD AND BRIDGE CONSTRUCTION" ADOPTED January 1, 2007; THE SUPPLEMENTAL SPECIFICATIONS AND RECURRING SPECIAL PROVISIONS INDICATED ON THE CHECK SHEET, AND "THE SPECIAL PROVISIONS" INCLUDED IN THIS PROPOSAL.

THE PROPOSED PROJECT IS LOCATED ON IL 185 IN FAYETTE COUNTY. THE PROJECT BEGINS AT THE MONTGOMERY/FAYETTE COUNTY LINE AND EXTENDS 3.81 MILES SOUTHEAST TO THE NORTH EAST EDGE OF COUNTY ROAD 350 E. AT SHAFTER. THE WORK INCLUDED IN SECTION D7 HMA SAFETY SHLD 2010-1 CONSIST OF HOT-MIX ASPHALT SHOULDERS WITH RUMBLE STRIPS AND AGGREGATE SHOULDERS.

THE CONTRACTOR SHALL PROVIDE INTERNET ACCESS TO THE HOT-MIX ASPHALT PLANT QUALITY CONTROL LAB SO THAT HOT-MIX ASPHALT PLANT REPORTS CAN BE E-MAILED TO THE DISTRICT HEADQUARTERS. THIS WORK SHALL BE INCLUDED IN THE COST OF HOT-MIX ASPHALT ITEMS.

AGGREGATE SHOULDERS, TYPE B SHALL BE CRUSHED STONE, CRUSHED CONCRETE, OR RAP.

THE MATERIAL EXCAVATED FOR THE CONSTRUCTION OF THE HMA SHOULDERS SHALL BE REMOVED FROM THE PROJECT ACCORDING TO ARTICLE 202.03 OF THE STANDARD SPECIFICATIONS. THE REMOVAL OF THE EXCAVATED MATERIAL SHALL BE INCLUDED IN THE CONTRACT UNIT PRICE PER UNIT FOR EXCAVATING AND GRADING EXISTING SHOULDER.

THE TOTAL QUANTITY OF PAINT PAVEMENT MARKING - LINE 4" CONSISTS OF 39682 FEET OF WHITE AND 9712 FEET OF YELLOW.

THE FOLLOWING MIXTURE REQUIREMENTS ARE APPLICABLE FOR THIS PROJECT:

HMA SHOULDER

MIXTURE USE: HMA SHOULDERS, 8"
 APPLICATION: HOT-MIX ASPHALT SHOULDERS
 PG GRADE: PG 58-22
 DESIGN AIR VOIDS: 4.0% @ NDESIGN = 30
 MIXTURE COMPOSITION: IL-19.0L
 FRICTION AGGREGATE: N/A

INDEX OF SHEETS

INDEX OF SHEETS

SHEET NO.	ITEM
1	COVER SHEET
2	INDEX OF SHEETS & GENERAL NOTES
3	SUMMARY OF QUANTITIES
4	TYPICAL CROSS-SECTIONS
5	SCHEDULES
6	RUMBLE STRIP & HMA SHOULDER DETAIL

THE FOLLOWING STANDARDS ARE A PART OF THESE PLANS AND ARE INCLUDED AFTER SHEET NO. 7:

STD. NO.	DESCRIPTION
000001-05	STANDARD SYMBOLS, ABBREVIATIONS AND PATTERNS
001006	DECIMAL OF AN INCH AND OF A FOOT
482001-02	HMA SHOULDER ADJACENT TO FLEXIBLE PAVEMENT
701011-02	OFF-RD MOVING OPERATIONS, 2L, 2W, DAY ONLY
701311-03	LANE CLOSURE, 2L, 2W, MOVING OPERATIONS - DAY ONLY
701326-03	LANE CLOSURE, 2L, 2W, PAVEMENT WIDENING, FOR SPEEDS ? 45 MPH
701901-01	TRAFFIC CONTROL DEVICES

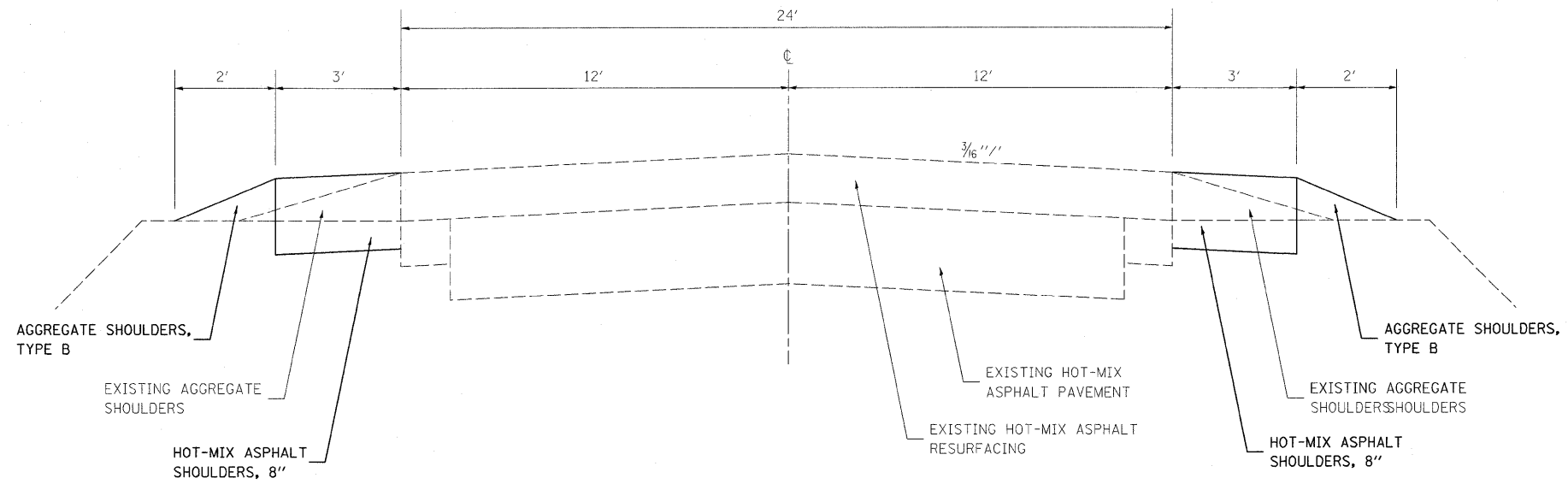
SUMMARY OF QUANTITIES			TOTAL QUANTITIES	CONSTRUCTION TYPE CODE	
CODE NO	ITEM	UNIT		SFTY2A	
				90% FED 10% STATE	
20200600	EXCAVATING AND GRADING EXISTING SHOULDER	UNIT	372	372	
48101200	AGGREGATE SHOULDERS, TYPE B	TON	682	682	
48203029	HOT-MIX ASPHALT SHOULDERS, 8"	SQ YD	12406	12406	
64200105	SHOULDER RUMBLE STRIP	FOOT	35092	35092	
67100100	MOBILIZATION	L SUM	1	1	
70100500	TRAFFIC CONTROL AND PROTECTION, STANDARD 701326	L SUM	1	1	
* 78001110	PAINT PAVEMENT MARKING - LINE 4"	FOOT	49394	49394	
	<i>*SPECIALTY ITEMS</i>				

FILE NAME =	USER NAME = teasleyck	DESIGNED -	REVISED -
c:\pw_work\pwidot\teasleyck\08159339\07	4428-shr-soq.dgn	DRAWN -	REVISED -
	PLOT SCALE = 50.0000' / IN.	CHECKED -	REVISED -

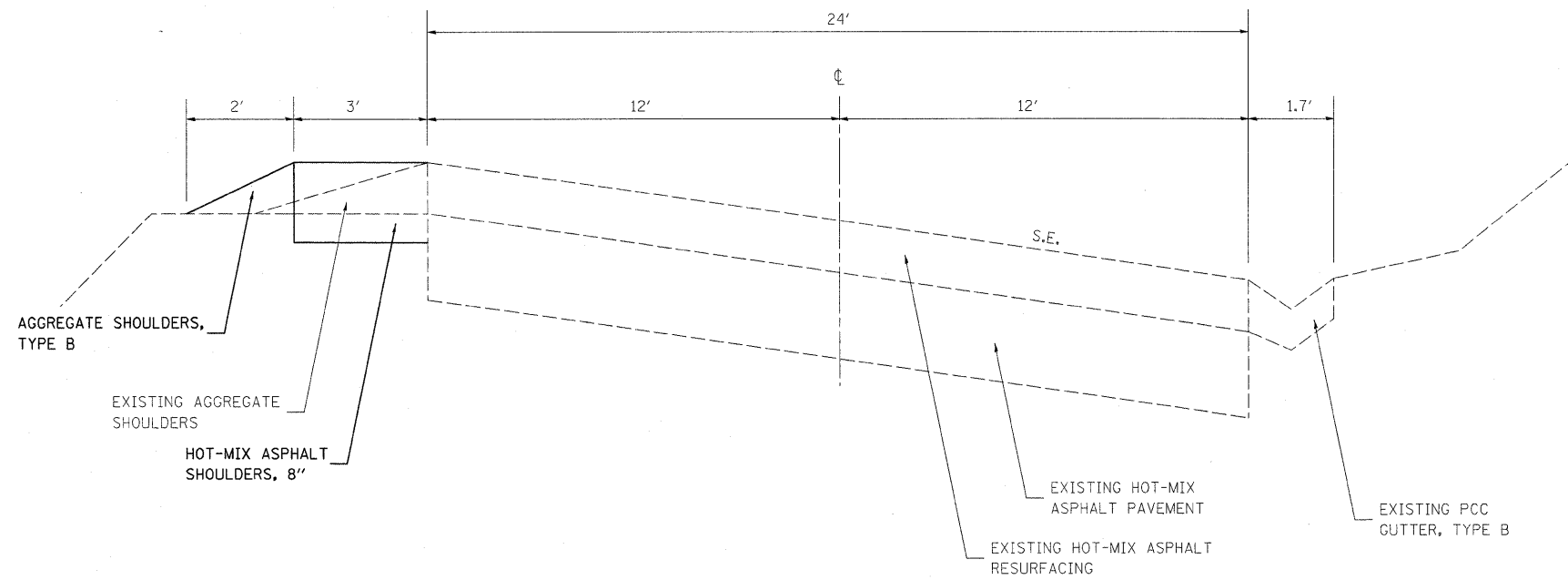
**STATE OF ILLINOIS
DEPARTMENT OF TRANSPORTATION**

SUMMARY OF QUANTITIES

F.A.P. RTE.	SECTION	COUNTY	TOTAL SHEETS	SHEET NO.
777	.	Fayette	6	3
CONTRACT NO. 74428				



STA 888+52 TO STA 912+99
 STA 921+55 TO STA 1089+98



STA 912+99 TO STA 921+55

FILE NAME =
 c:\pw\work\pwidot\TEASLEYCK\d0159339\0

USER NAME = teasleyck
 74428-sht-typicois.dgn

DESIGNED -
 DRAWN -

REVISED -
 REVISED -

**STATE OF ILLINOIS
 DEPARTMENT OF TRANSPORTATION**

TYPICAL SECTIONS

SCALE: SHEET NO. OF SHEETS STA. TO STA.

F.A.P. RTE.	SECTION	COUNTY	TOTAL SHEETS	SHEET NO.
777		Fayette	6	4
CONTRACT NO. 74428				

ILLINOIS FED. AID PROJECT

SHOULDER SCHEDULE

STATION TO STATION	LENGTH		EXCAVATING AND GRADING EXISTING SHOULDER	AGGREGATE SHOULDERS, TYPE B	HOT-MIX ASPHALT SHOULDERS, 8"	SHOULDER RUMBLE STRIP
	FEET	UNIT				
888+52 TO 903+50	1498	9	51	646	1935	
903+50 TO 921+55	1805	30	24	677	1961	
921+55 TO 1089+78	16823	333	608	11083	31196	
TOTALS		372	682	12406	35092	

PAVEMENT MARKING SCHEDULE

STATION TO STATION	LENGTH		PAINT PAVEMENT MARKING - 4"
	FEET	UNIT	
888+52 TO 898+39	987	2151	
898+39 TO 903+50	511	1150	
903+50 TO 921+55	1805	7004	
921+55 TO 1089+78	16823	39089	
TOTALS		49394	

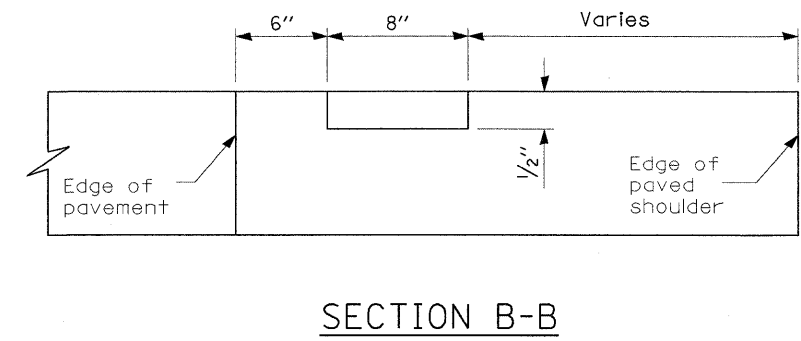
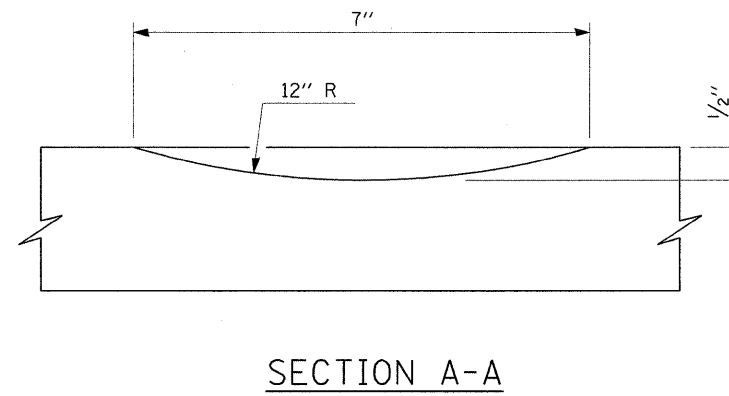
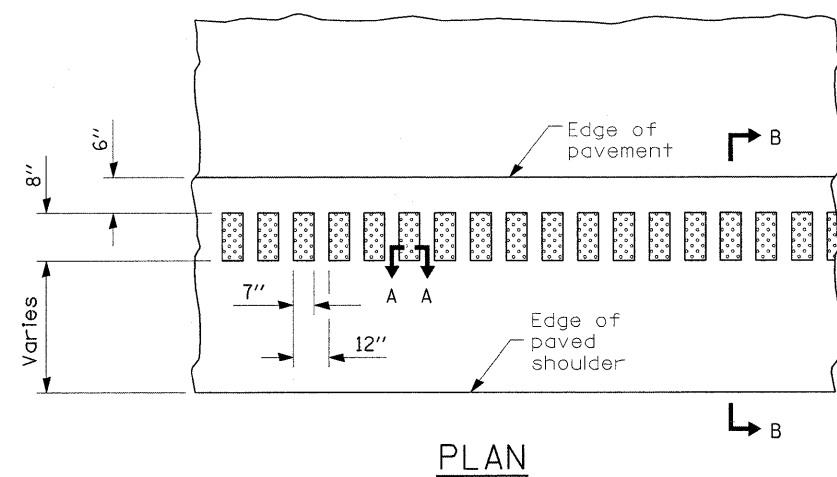
FILE NAME =	USER NAME = teaslegok	DESIGNED -	REVISED -
ca:\pw_work\NPWIDOT\TEASLEYCK\20159339\74428-sht-schedule.dgn		DRAWN -	REVISED -
PLOT SCALE = 50.0000' / IN.		CHECKED -	REVISED -
PLOT DATE = 12/4/2009		DATE -	REVISED -

STATE OF ILLINOIS
DEPARTMENT OF TRANSPORTATION

SCHEDULES

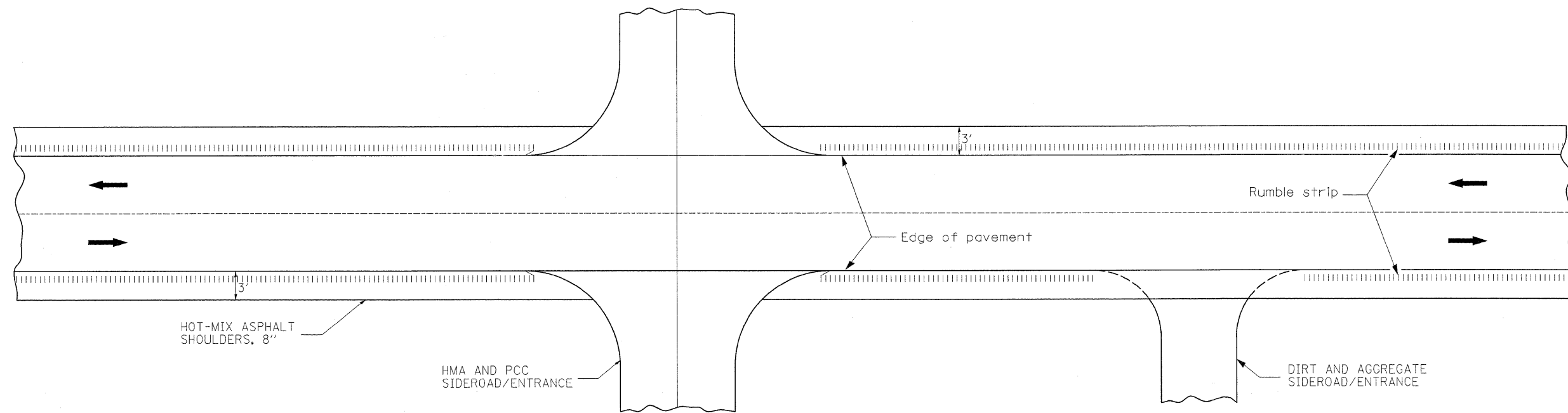
SCALE:	SHEET NO.	OF	SHEETS	STA.	TO STA.
--------	-----------	----	--------	------	---------

F.A.P. RTE.	SECTION	COUNTY	TOTAL SHEETS	SHEET NO.
777	.	Fayette	6	5
CONTRACT NO. 74428			ILLINOIS FED. AID PROJECT	



NOTE: OMIT RUMBLE STRIPS ON ALL SIDEROADS, PRIVATE AND COMMERCIAL ENTRANCES AT RADIUS RETURNS. OMIT RUMBLE STRIPS AT MAILBOX TURNOUTS 60' BOTH SIDES OF THE MAILBOX OR AS DETERMINED BY THE ENGINEER. RUMBLE STRIPS SHALL NOT BE OMITTED ON FIELD ENTRANCES.

OMIT HOT-MIX ASPHALT SHOULDERS, 8" ON ALL HMA AND PCC SIDEROADS, ENTRANCES, AND CONCRETE GUTTER LOCATIONS.



TYPICAL APPLICATION AT SIDEROADS AND ENTRANCES

FILE NAME = c:\pwwork\pwidot\TEASLEYCK\d0159339\d	USER NAME = teasleyck 74428-shr-details.dgn	DESIGNED - DRAWN -	REVISED - REVISED -	STATE OF ILLINOIS DEPARTMENT OF TRANSPORTATION	HMA SHOULDER AND RUMBLE STRIP DETAIL				F.A.P. RTE. 777	SECTION •	COUNTY Fayette	TOTAL SHEETS 6	SHEET NO. 6
PLOT SCALE = 50.0000' / IN.		CHECKED -	REVISED -		SCALE:	SHEET NO.	OF	SHEETS	STA.	TO STA.	CONTRACT NO. 74428		
PLOT DATE = 12/14/2009		DATE -	REVISED -		ILLINOIS LEGAL AID PROJECT								