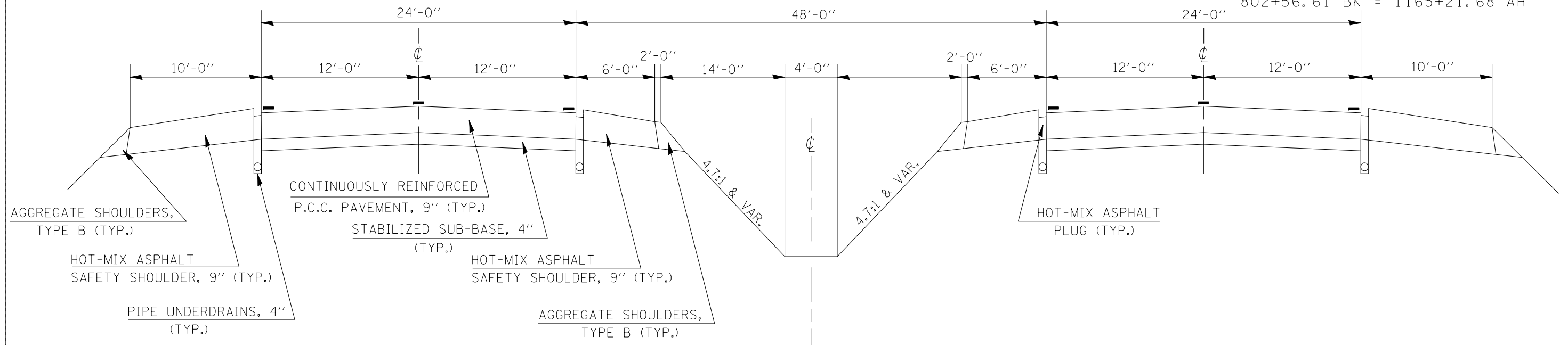


EXISTING TYPICAL SECTION FAP 322 (US 51)

EQUATION STATIONS

335+00.00 BK = 736+14.79 AH
 880+16.13 BK = 880+15.45 AH
 944+00.00 BK = 544+42.74 AH
 802+56.61 BK = 1165+21.68 AH

STATION TO STATION
 286+64.91 1551+93.23

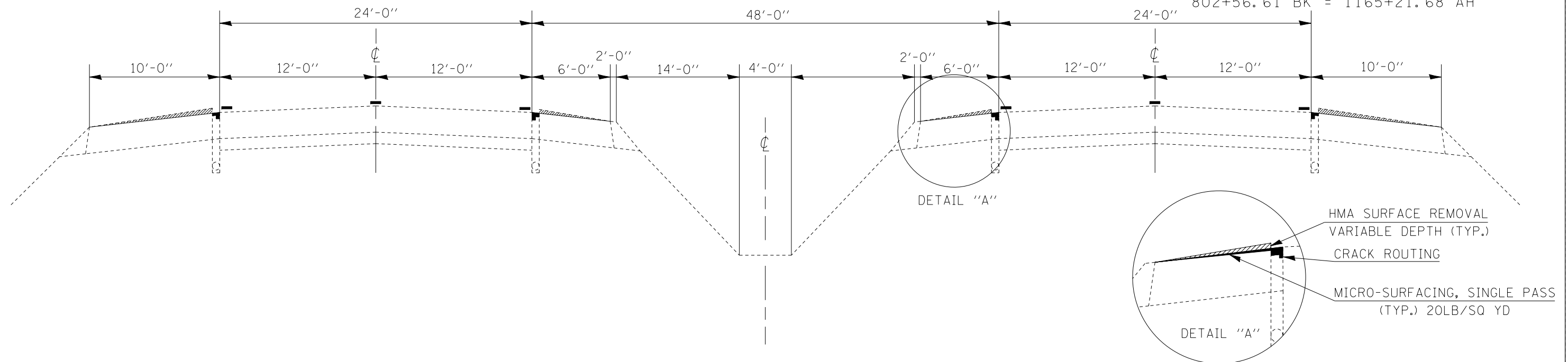


PROPOSED TYPICAL SECTION FAP 322 (US 51)

EQUATION STATIONS

335+00.00 BK = 736+14.79 AH
 880+16.13 BK = 880+15.45 AH
 944+00.00 BK = 544+42.74 AH
 802+56.61 BK = 1165+21.68 AH

STATION TO STATION
 286+64.91 1551+93.23



FILE NAME =	USER NAME = leroyma	DESIGNED - MAL	REVISED -
ce:\pwork\pwidot\LEROYMA\d0149985\0570809-sht-typical.dgn		DRAWN - JJB	REVISED -
	PLOT SCALE = 40.0000' / IN.	CHECKED -	REVISED -
	PLOT DATE = 11/17/2009	DATE - 7-8-09	REVISED -

STATE OF ILLINOIS
 DEPARTMENT OF TRANSPORTATION

EXISTING TYPICAL SECTION
 PROPOSED TYPICAL SECTION

SCALE: SHEET NO. OF SHEETS STA. TO STA.

F.A.P. RTE.	SECTION	COUNTY	TOTAL SHEETS	SHEET NO.
322	2010PPP	DEWITT	11	5
CONTRACT NO. 70809				
ILLINOIS FED. AID PROJECT				