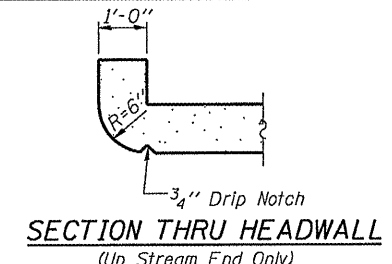
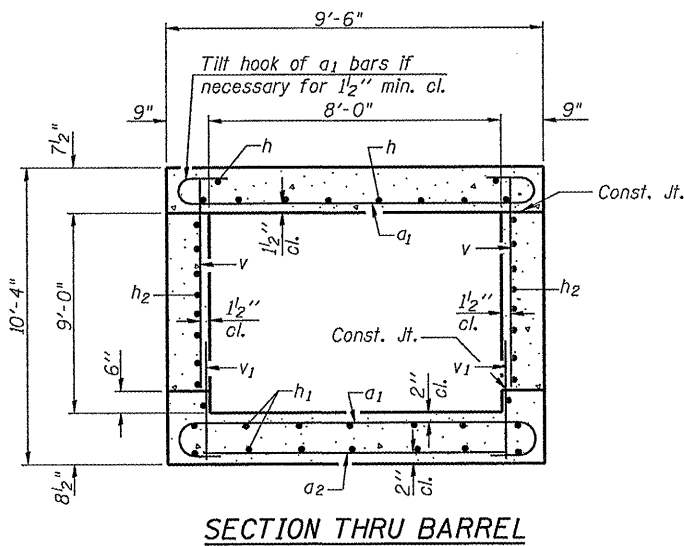
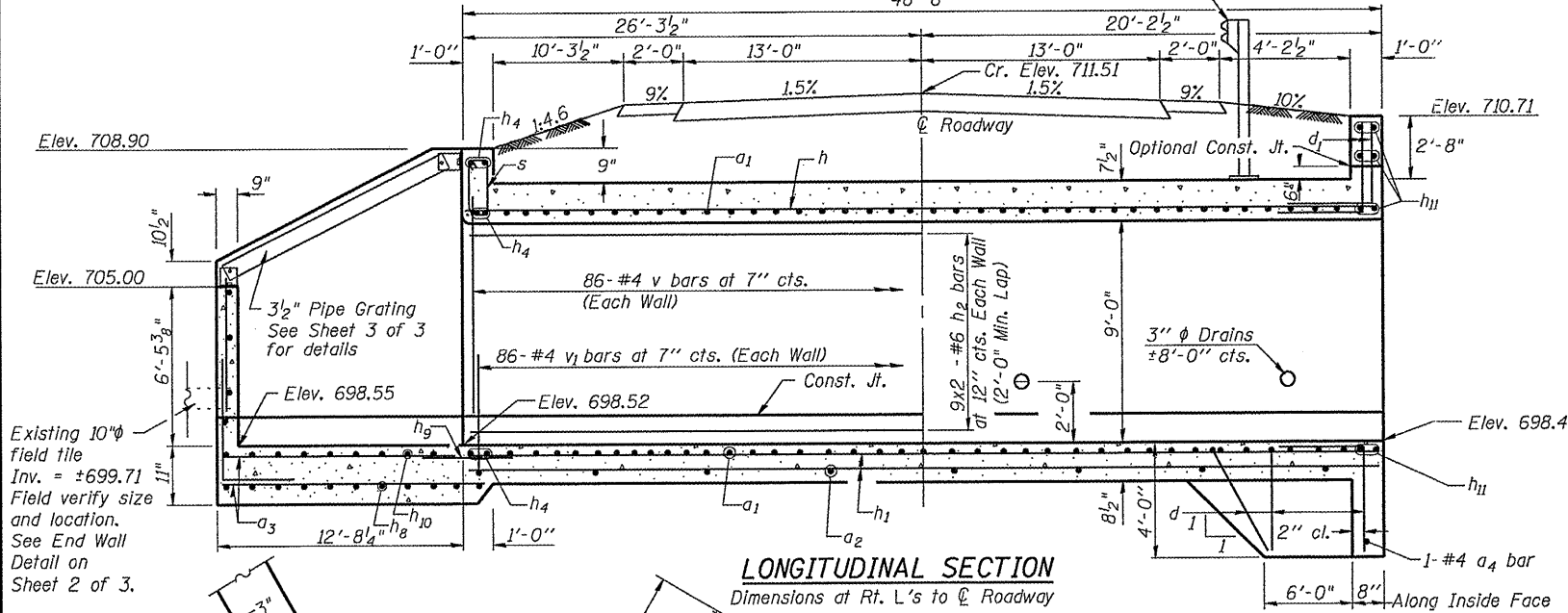


Bench Mark: Chiseled square on N.W. corner of concrete weir that extends N. of the A.R.B.C. Elevation 703.824.

See Highway Standard 630J01 for Guardrail Anchorage

STATE OF ILLINOIS  
DEPARTMENT OF TRANSPORTATION



**BILL OF MATERIAL**

Bar	No.	Size	Length	Shape
a1	184	#7	10'-10"	U
a2	26	#4	8'-4"	U
a3	47	#6	13'-4"	U
a4	1	#4	14'-10"	U
d	23	#4	5'-6"	U
d1	14	#6	5'-8"	U
d2	30	#6	5'-6"	U
d3	30	#6	5'-7"	U
d4	11	#4	4'-0"	U
d5	11	#4	4'-0"	U
d6	8	#4	4'-6"	U
d7	8	#4	4'-6"	U
h	22	#6	25'-7"	U
h1	28	#5	25'-5"	U
h2	36	#6	25'-7"	U
h3	46	#4	18'-11"	U
h4	6	#6	9'-9"	U
h5	11	#4	21'-10"	U
h6	11	#4	14'-8"	U
h7	24	#4	13'-2"	U
h8	13	#6	28'-1"	U
h9	10	#4	4'-0"	U
h10	13	#4	27'-3"	U
h11	8	#6	14'-10"	U
n(E)	50	#6	6'-4"	U
n1(E)	52	#5	3'-9"	U
s	10	#4	4'-6"	U
t	84	#6	8'-9"	U
v	172	#4	8'-11"	U
v1	172	#4	2'-2"	U
v2	52	#4	9'-5"	U
v3	52	#5	7'-0"	U
v4	12	#4	14'-5"	U
v5	20	#6	6'-6"	U
v6	19	#6	8'-0"	U
v7(E)	76	#6	8'-0"	U
v8	37	#6	5'-7"	U
v9	16	#4	15'-11"	U
v10	8	#6	2'-2"	U
w	28	#5	18'-5"	U

STATION 526+53.00  
BUILT 2010 BY  
STATE OF ILLINOIS  
F.A.S. RT. 1517 SEC. 12BR  
LOADING HS-20  
STR. NO. 010-8125

**NAME PLATE**  
See Std. 515001

**DESIGN STRESSES**  
fy = 60,000 psi  
f'c = 3,500 psi

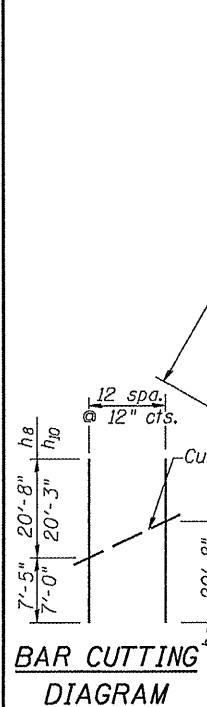
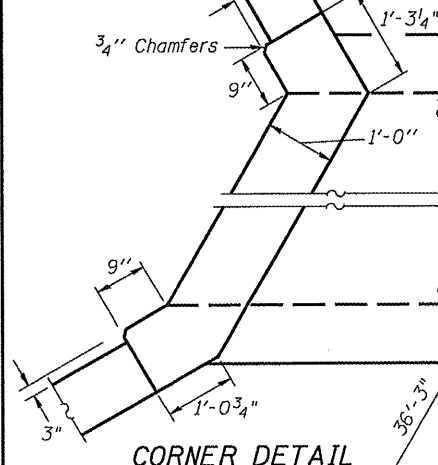
Max. Soil Pressure  
under footing = 3,300 psf

**DESIGN SPECIFICATIONS**

2002 AASHTO

**LOADING HS-20**

Allow 50 #/ft<sup>2</sup> for future  
wearing surface



**NOTES**  
Reinforcement bars shall conform to the requirements of ASTM A 706 Gr 60. See Special Provisions.  
Bars indicated thus 14 x 2-#5 etc. indicates 14 lines of bars with 2 lengths per line.  
Reinforcement bars designated (E) shall be epoxy coated.  
Precast option not allowed.

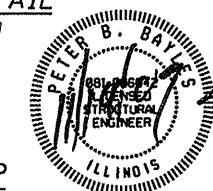
\* a bars in skew portion of slab shall be ordered full length & cut to fit. Balance of bar to be used in opposite end of culvert.

\*\* a bars in skew portion of slab shall be ordered full length & cut to fit. Balance of bar to be used in top of slab

**CORNER DETAIL**  
Down Stream

**MIN BAR LAP  
FOR BARREL & WING**

- #4 1'-8"
- #5 2'-0"
- #6 2'-7"



Peter B. Bayles, P.E., S.E.  
Structural Engineer License No. 081-006042  
Expiration Date: 11/30/2010

**BOX PLAN & DETAILS**  
US 150 OVER DITCH  
CHAMPAIGN COUNTY  
STATION 526+53.00  
STRUCTURE NO. 010-8125

SHEET NO. 1	F.A.S. RTE.	SECTION	COUNTY	TOTAL SHEETS	SHEET NO.
	1517	12BR	CHAMPAIGN	30	10
3 SHEETS	FED. ROAD DIST. NO.		ILLINOIS FED. AID PROJECT		
		CONTRACT NO. 70584			