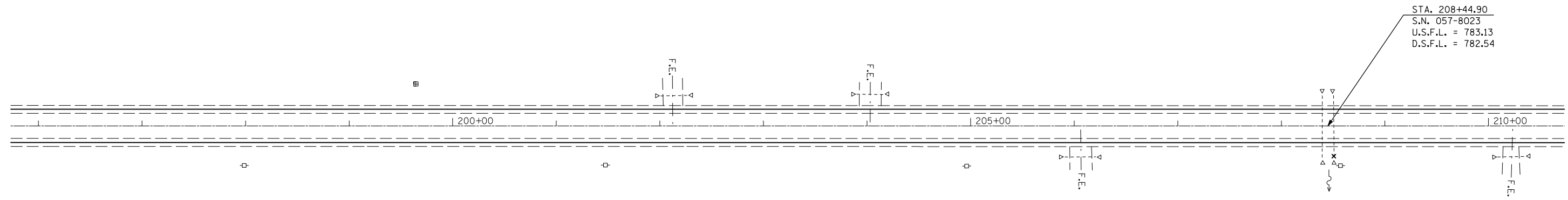


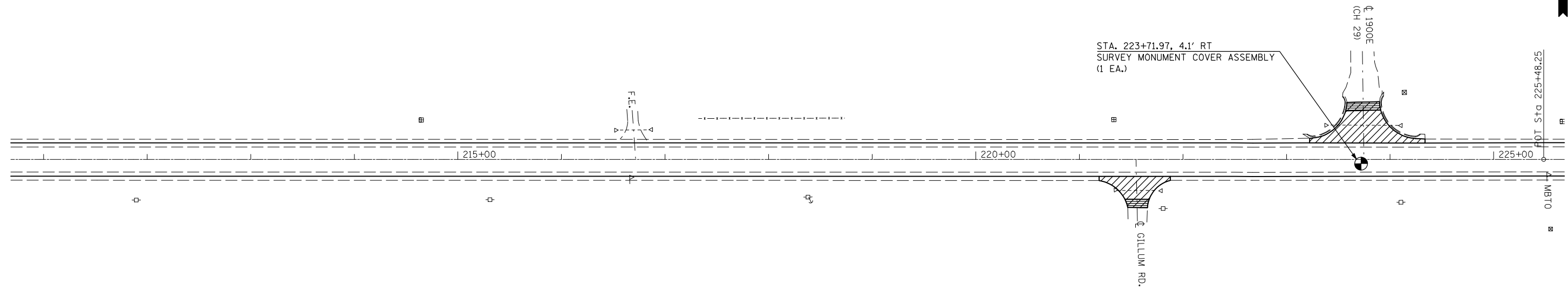
SEC. 31 - T 22 N - R 3 E - 3RD PM



SEC. 6 - T 21 N - R 3 E - 3RD PM

6" E PIPE, S SIDE,  
STA. 208+50.66, 29.37' RT, ELEV. 786.00

SEC. 31 - T 22 N - R 3 E - 3RD PM



INCIDENTAL HMA SURFACING 2 1/4"  
 TEMPORARY RAMP

SEC. 6 - T 21 N - R 3 E - 3RD PM

FILE NAME =	USER NAME = bucklesjj	DESIGNED -	REVISED -	<b>STATE OF ILLINOIS DEPARTMENT OF TRANSPORTATION</b>	<b>PLAN SHEET</b>			F.A.P. RTE.	SECTION	COUNTY	TOTAL SHEETS	SHEET NO.
ct:\pw\work\p\dot\bucklesjj\d0170848\0570507-sh1-plen.dgn	DRAWN -	REVISED -	315						McLean	115	31	
PLOT SCALE = 100.0000' / IN.	CHECKED -	REVISED -	•(101,102X)R,RS-2 & 55RS-PRK LN				CONTRACT NO. 70507					
PLOT DATE = 12/9/2009	DATE -	REVISED -	ILLINOIS FED. AID PROJECT									
				SCALE:	SHEET NO.	OF SHEETS	STA.	TO STA.				