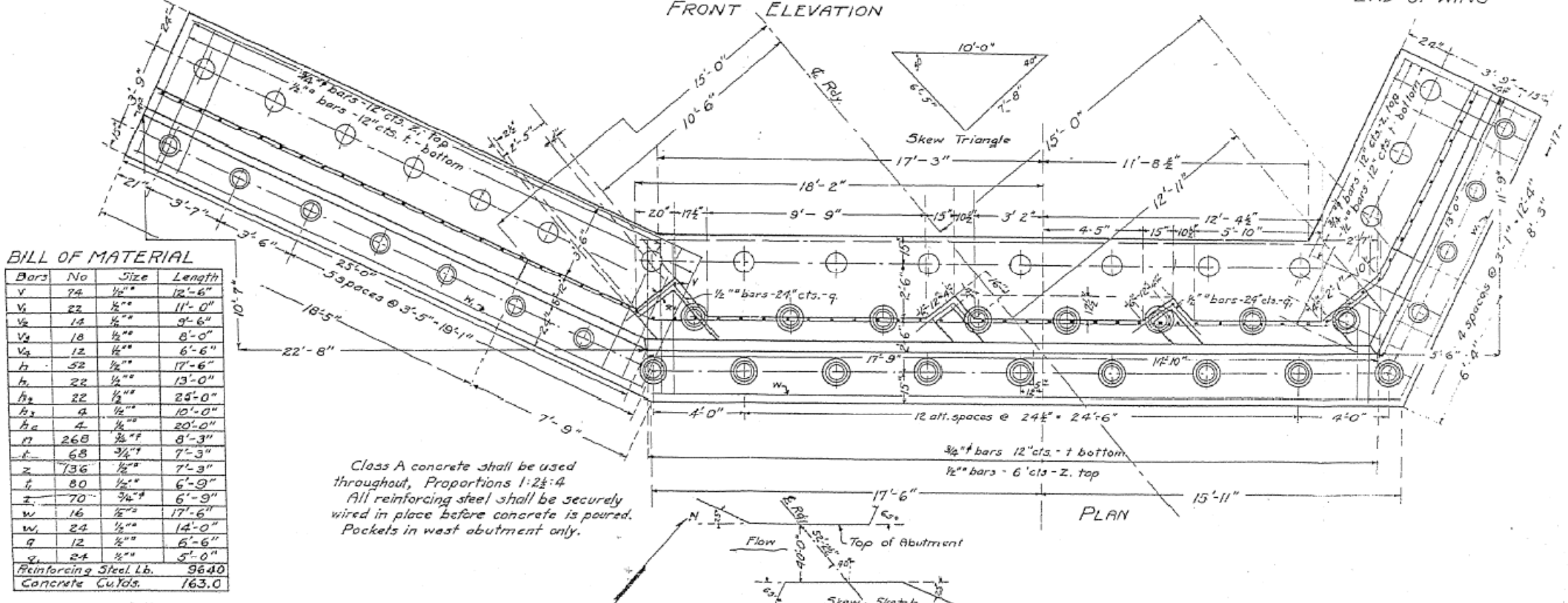
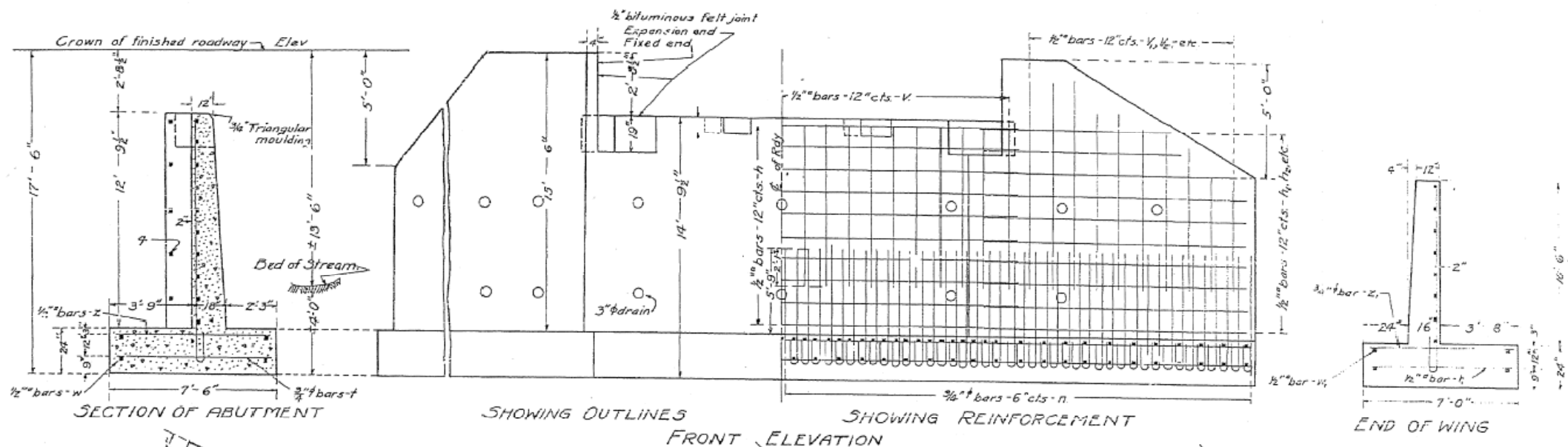


# FOR INFORMATION ONLY



**BILL OF MATERIAL**

Bars	No	Size	Length
V	74	1/2"	12'-6"
V <sub>1</sub>	22	1/2"	11'-0"
V <sub>2</sub>	14	1/2"	9'-6"
V <sub>3</sub>	18	1/2"	8'-0"
V <sub>4</sub>	12	1/2"	6'-6"
h	52	1/2"	17'-6"
h <sub>1</sub>	22	1/2"	13'-0"
h <sub>2</sub>	22	1/2"	25'-0"
h <sub>3</sub>	4	1/2"	10'-0"
h <sub>4</sub>	4	1/2"	20'-0"
n	268	3/8"	8'-3"
t	68	3/4"	7'-3"
z	136	1/2"	7'-3"
z <sub>1</sub>	80	1/2"	6'-9"
z <sub>2</sub>	70	3/4"	6'-9"
w	16	1/2"	17'-6"
w <sub>1</sub>	22	1/2"	14'-0"
q	12	1/2"	6'-6"
z	24	1/2"	5'-0"
Reinforcing Steel Lb.			964.0
Concrete Cu Yds.			163.0

Class A concrete shall be used throughout, Proportions 1:2 1/2:4  
 All reinforcing steel shall be securely wired in place before concrete is poured.  
 Pockets in west abutment only.

- ⊙ 15 Ton piles - 12" butt, 10" tip 34 required, untreated "
- ⊙ 12 " " " " " 22 " " "
- ⊙ 10 " " 10" - 8" " 34 " " "

HURST-ROSCHKE ENGINEERS, INC.  
 HILLSBORO, ILLINOIS 62049  
 (217)532-3959 FAX (217)532-3212



Tracing  
 Prepared by: A. O. Halverson 3-2-24  
 Checked by: C. H. Dammann 3-3-24  
 Designed in office of Bridge Engineer  
 Division of Highways, Springfield, Ill.  
 Approved by: R. T. D. Allen 3-3-24

4013 1/2 T.G. - 22 - 40 SK

512

FILE NAME =	USER NAME = keyarb	DESIGNED -	REVISED -
ca:\pwork\p\WID01\KEYSRB\d0142584\0570	27-shr-detals1.GPE.dgn	DRAWN -	REVISED -
	PLOT SCALE = 40.0000 ' / IN.	CHECKED -	REVISED -
	PLOT DATE = 12/17/2009	DATE - 12-16-09	REVISED -

STATE OF ILLINOIS  
 DEPARTMENT OF TRANSPORTATION

GENERAL PLAN AND ELEVATION FROM 1924 AS-BUILT PLANS  
 SCALE: VARIES SHEET NO. 1 OF 1 SHEETS STA. TO STA.

F.A.P. RTE.	SECTION	COUNTY	TOTAL SHEETS	SHEET NO.
709	(105BR)BR	CHAMPAIGN	55	45A
FED. ROAD DIST. NO. 5 ILLINOIS FED. AID PROJECT			CONTRACT NO. 70427	