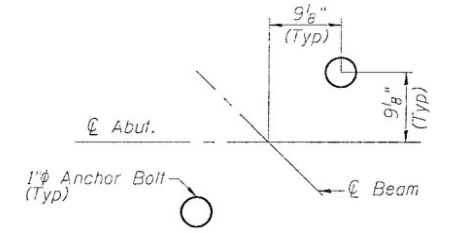
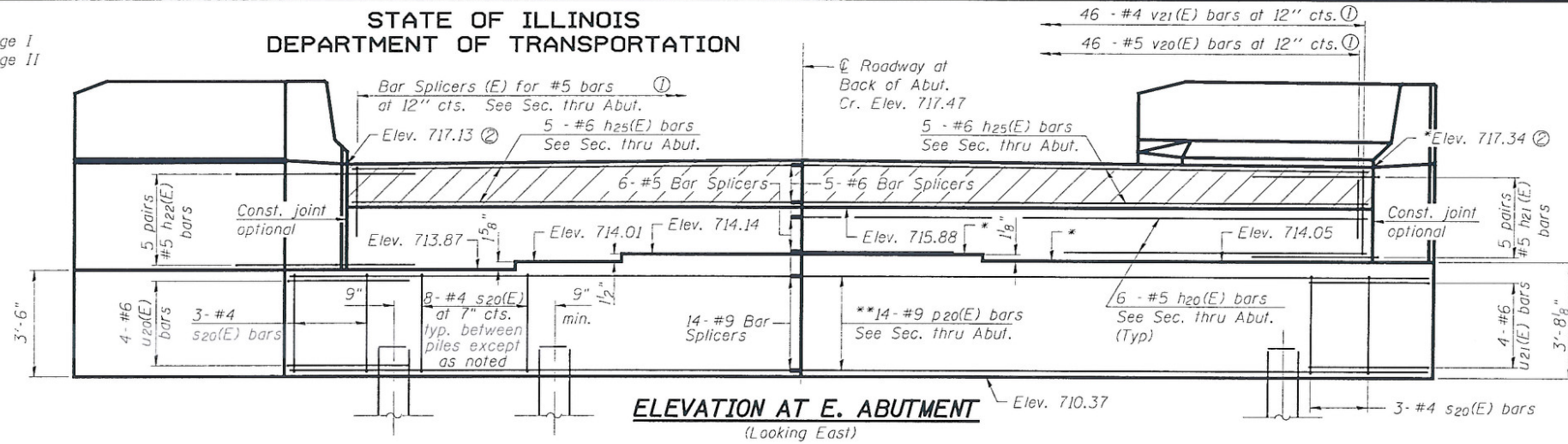
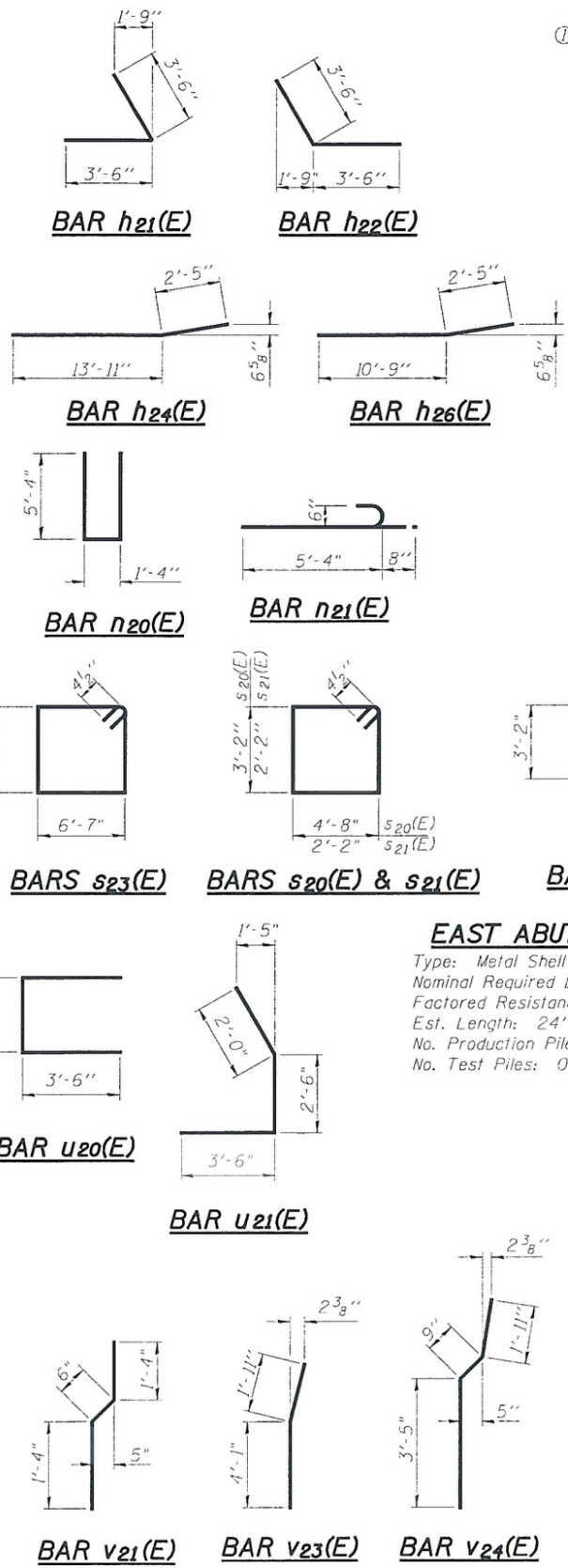


STATE OF ILLINOIS  
DEPARTMENT OF TRANSPORTATION

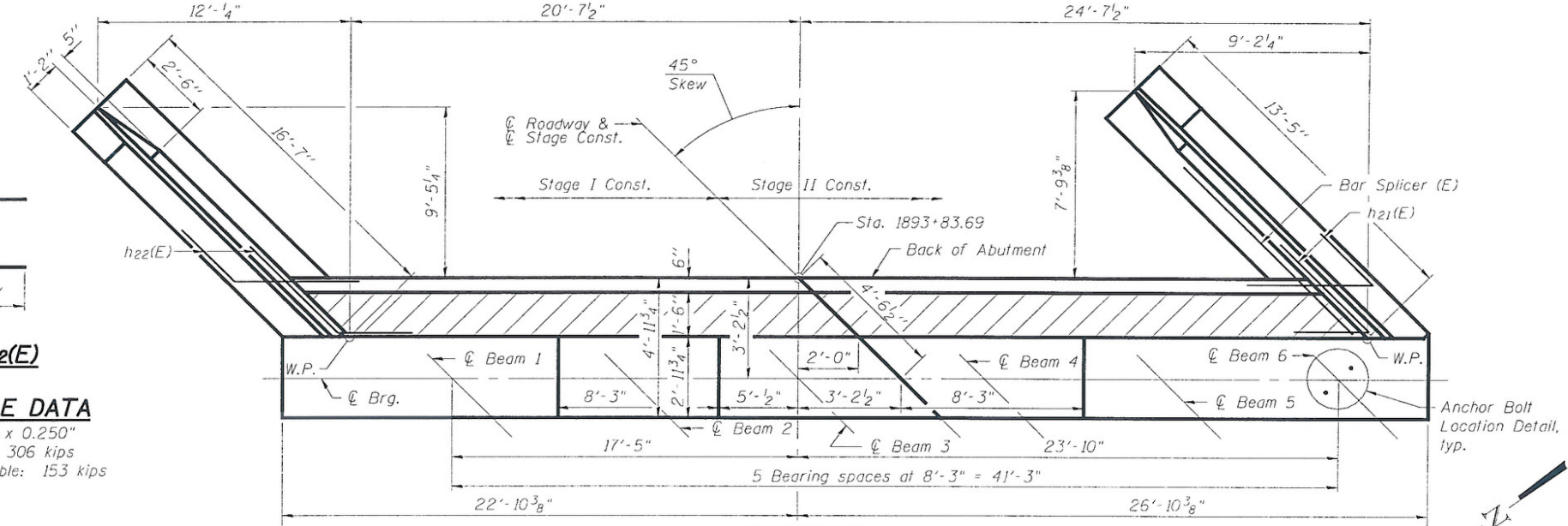
① 23 Stage I  
23 Stage II

46 - #4 v21(E) bars at 12" cts. ①  
46 - #5 v20(E) bars at 12" cts. ①

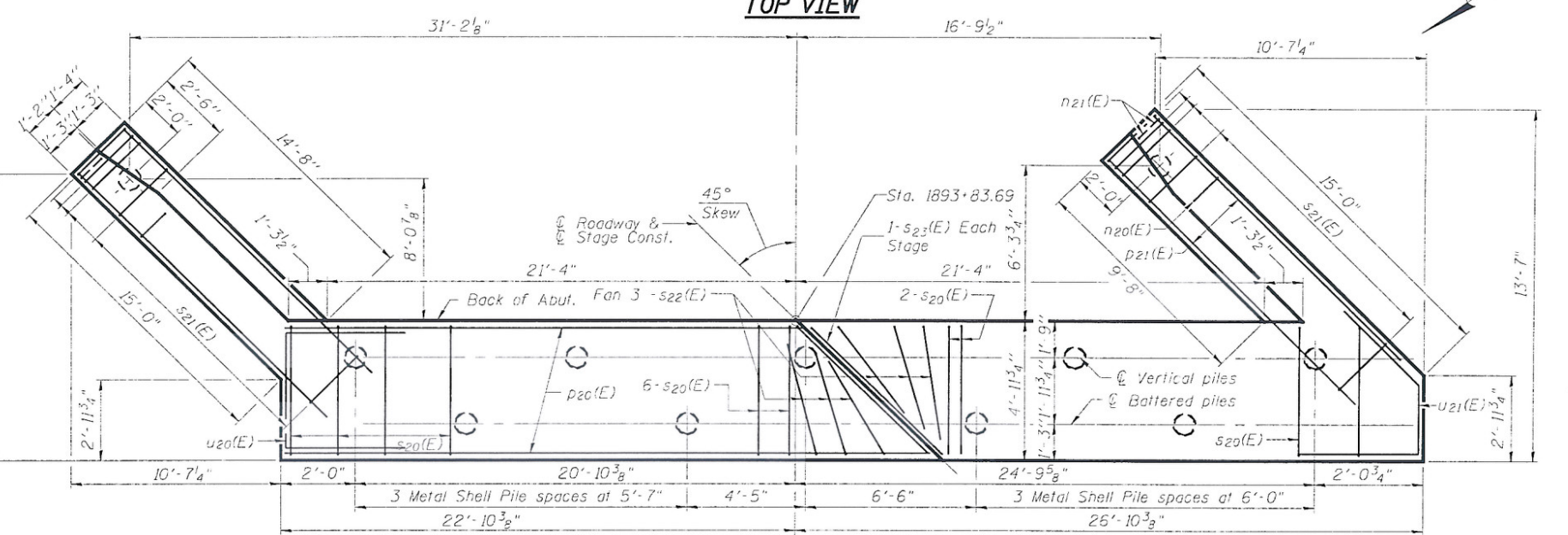
② Prior to Grinding  
\*Fill R to be provided at bearings  
1" R for Beam 2  
3/4" R for Beam 3



**ANCHOR BOLT  
LOCATION DETAIL**



**TOP VIEW**



**PLAN-PILE CAP**

**ABUTMENT  
BILL OF MATERIAL**

Bar No.	Size	Length	Shape
h20(E)	#5	22'-5"	
h21(E)	#5	7'-0"	
h22(E)	#5	7'-0"	
h23(E)	#4	14'-8"	
h24(E)	#4	16'-4"	
h25(E)	#6	22'-5"	
h26(E)	#4	13'-2"	
h27(E)	#4	15'-8"	
h28(E)	#4	13'-8"	
n20(E)	#6	12'-0"	
n21(E)	#6	6'-0"	
p20(E)	#9	49'-0"	
p21(E)	#7	14'-8"	
s20(E)	#4	16'-5"	
s21(E)	#4	9'-5"	
s22(E)	#4	11'-2"	
s20(E)	#4	16'-5"	
u20(E)	#6	11'-5"	
u21(E)	#6	8'-0"	
v20(E)	#4	2'-7"	
v21(E)	#4	3'-2"	
v22(E)	#6	6'-0"	
v23(E)	#6	6'-0"	
v24(E)	#6	6'-1"	
v25(E)	#4	2'-10"	
v26(E)	#4	4'-4"	
Structure Excavation	Cu. Yd.	180	
Concrete Structures	Cu. Yd.	58.3	
Reinforcement Bars, Epoxy Coated	Pound	6,400	
Furnishing Metal Shell Piles, 12" x 0.250"	Foot	264	
Driving Piles	Foot	264	
Pile Shoes	Each	11	

\*\*Order p20(E) bars full length.  
Cut to fit skew and use remainder of bars in opposite side.  
For details of Bar Splicers, see sheet 22 of 24.

**EAST ABUTMENT  
STRUCTURE NO. 010-0283**

DESIGNED	JLG
CHECKED	JSP
DRAWN	UJ
CHECKED	JLG



SHEET NO. 18 24 SHEETS	F.A.P. RTE. 709	SECTION (105BR)BR	COUNTY CHAMPAIGN	TOTAL SHEETS 55	SHEET NO. 30
	SN 010-0283		CONTRACT NO. 70427		
FED. ROAD DIST. NO. 5 ILLINOIS FED. AID PROJECT					