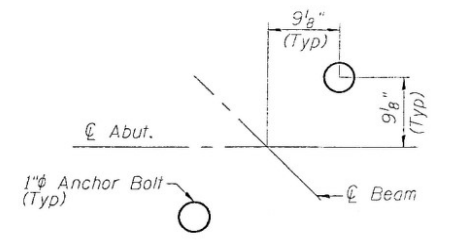
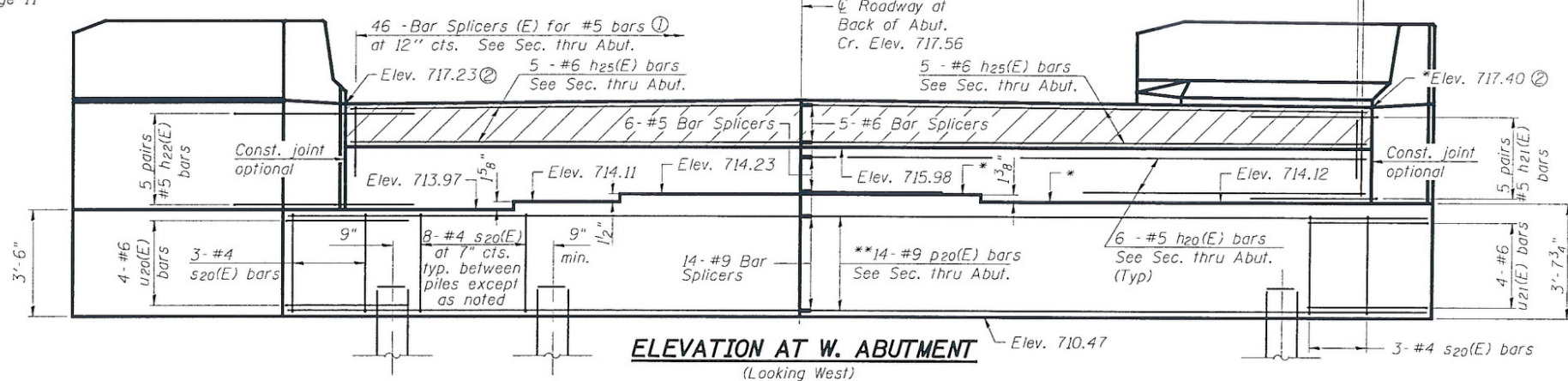
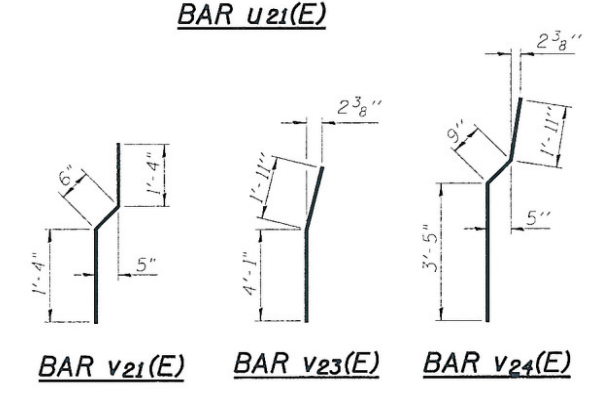
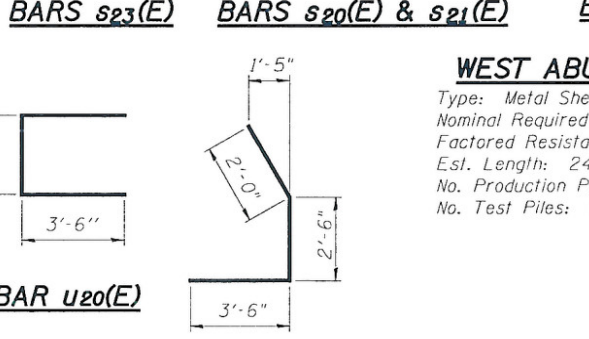
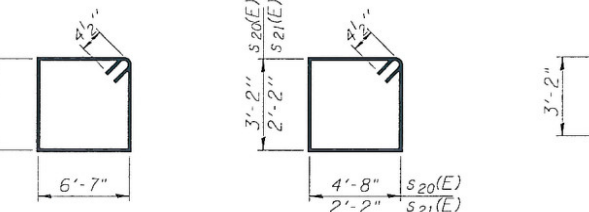
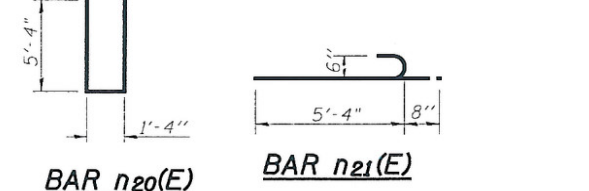
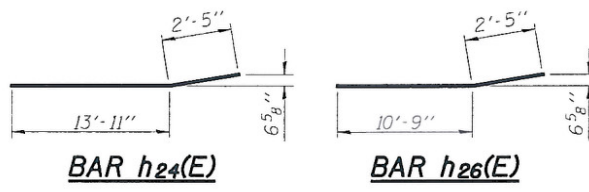
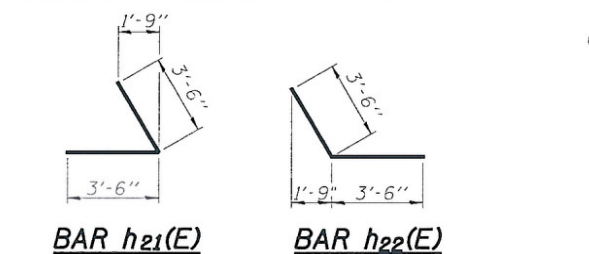


STATE OF ILLINOIS
DEPARTMENT OF TRANSPORTATION

① 23 Stage I
23 Stage II

46 - #4 v21(E) bars at 12" cts. ①
46 - #5 v20(E) bars at 12" cts. ①

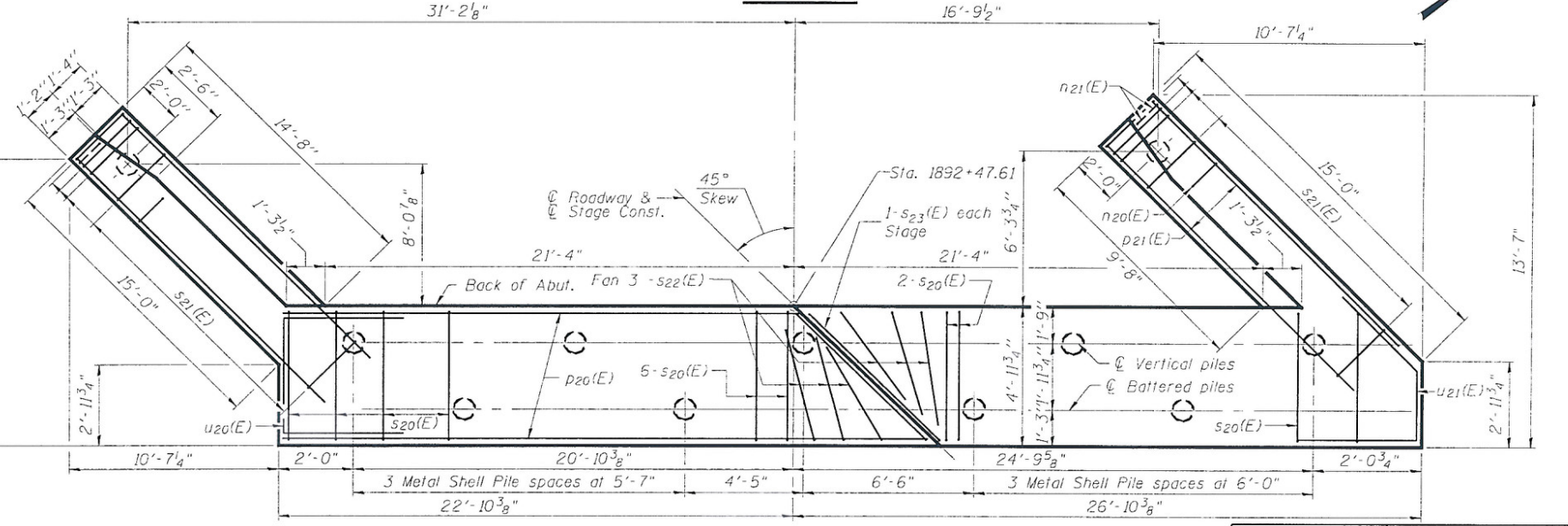
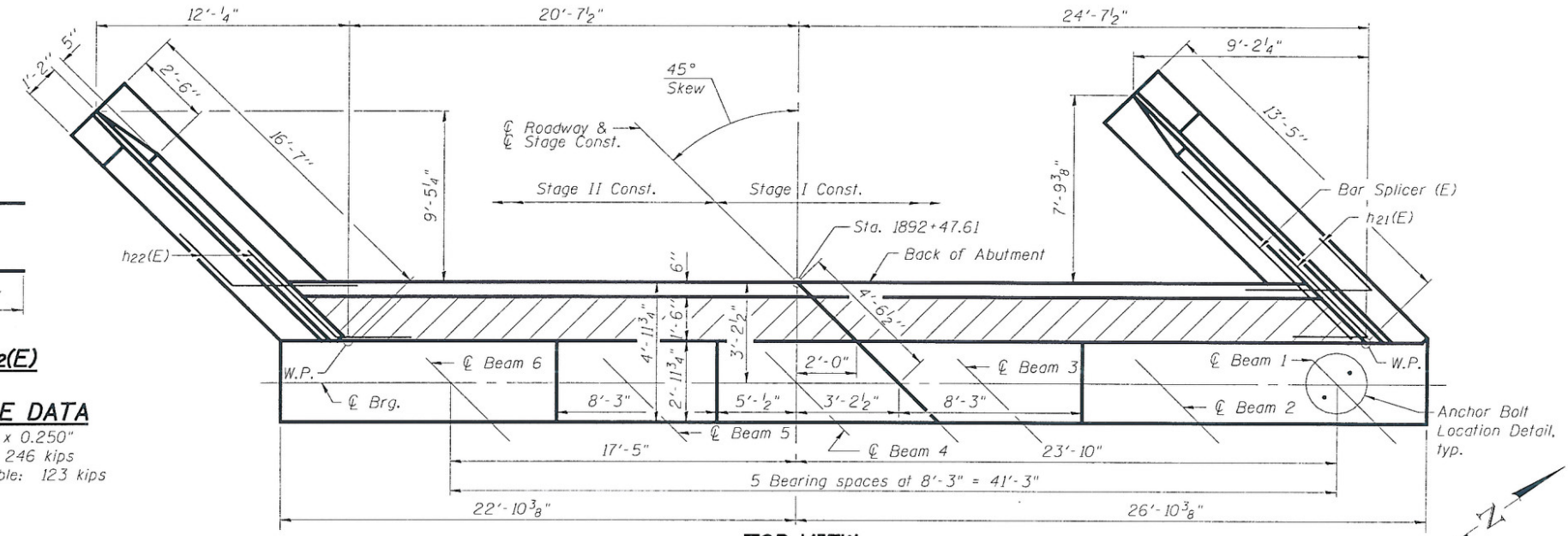
② Prior to Grinding
*Fill \bar{R} to be provided at bearings
1" \bar{R} for Beam 2
3/4" \bar{R} for Beam 3



**ABUTMENT
BILL OF MATERIAL**

Bar	No.	Size	Length	Shape
h20(E)	12	#5	22'-5"	
h21(E)	10	#5	7'-0"	
h22(E)	10	#5	7'-0"	
h23(E)	16	#4	14'-8"	
h24(E)	6	#4	16'-4"	
h25(E)	10	#6	22'-5"	
h26(E)	6	#4	13'-2"	
h27(E)	2	#4	15'-8"	
h28(E)	2	#4	13'-8"	
n20(E)	26	#6	12'-0"	
n21(E)	12	#6	6'-0"	
p20(E)	14	#9	49'-0"	
p21(E)	12	#7	14'-8"	
s20(E)	62	#4	16'-5"	
s21(E)	32	#4	9'-5"	
s22(E)	6	#4	11'-2"	
s23(E)	2	#4	20'-3"	
u20(E)	4	#6	11'-5"	
u21(E)	4	#6	8'-0"	
v20(E)	46	#4	2'-7"	
v21(E)	46	#4	3'-2"	
v22(E)	32	#6	6'-0"	
v23(E)	6	#6	6'-0"	
v24(E)	26	#6	6'-1"	
v25(E)	46	#4	2'-10"	
v26(E)	46	#4	4'-4"	
Structure Excavation		Cu. Yd.	180	
Concrete Structures		Cu. Yd.	58.3	
Reinforcement Bars, Epoxy Coated		Pound	6,400	
Furnishing Metal Shell Piles, 12" x 0.250"		Foot	264	
Driving Piles		Foot	264	
Pile Shoes		Each	11	

WEST ABUT. PILE DATA
Type: Metal Shell Pile 12" x 0.250"
Nominal Required Bearing: 246 kips
Factored Resistance Available: 123 kips
Est. Length: 24'
No. Production Piles: 11
No. Test Piles: 0



**Order p20(E) bars full length. Cut to fit skew and use remainder of bars in opposite side. For details of Bar Splicers, see sheet 22 of 24.

**WEST ABUTMENT
STRUCTURE NO. 010-0283**

DESIGNED	JLG
CHECKED	JSP
DRAWN	UJ
CHECKED	JLG



SHEET NO. 17 24 SHEETS	F.A.P. RTE. 709	SECTION (105BR)BR	COUNTY CHAMPAIGN	TOTAL SHEETS 55	SHEET NO. 29
	SN 010-0283		CONTRACT NO. 70427		
FED. ROAD DIST. NO. 5 ILLINOIS FED. AID PROJECT					