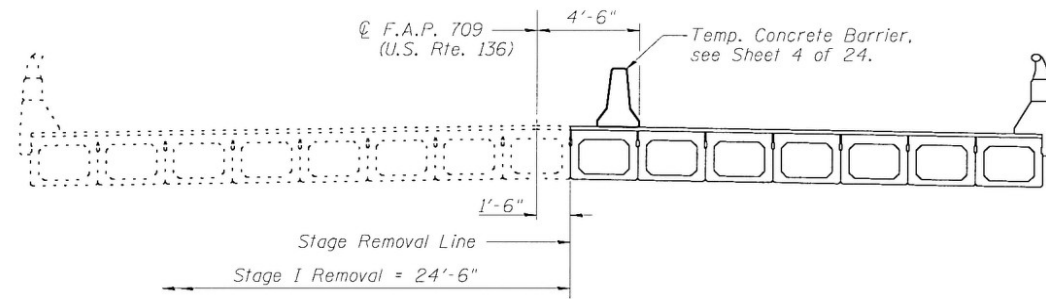
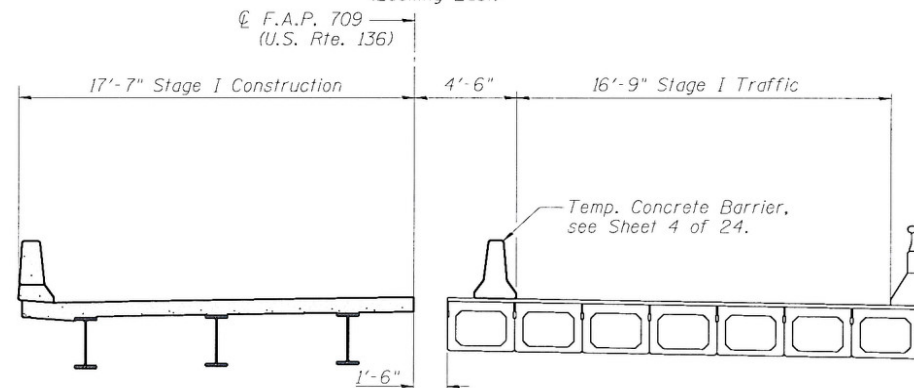


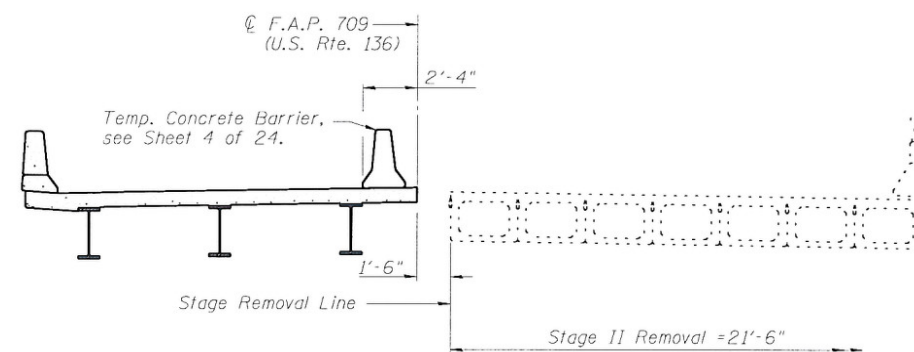
STATE OF ILLINOIS  
DEPARTMENT OF TRANSPORTATION



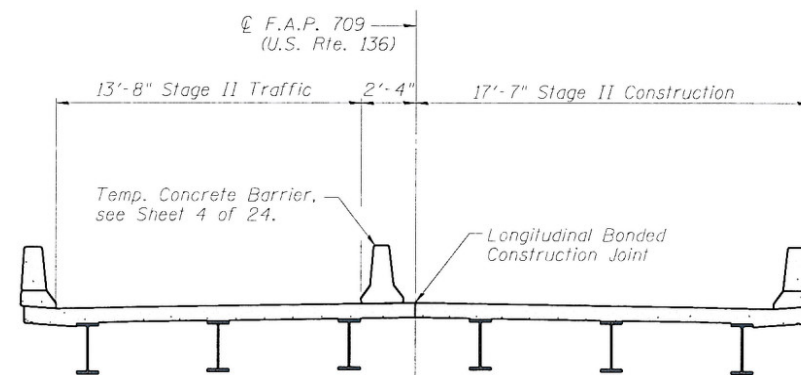
**STAGE I REMOVAL**  
(Looking East)



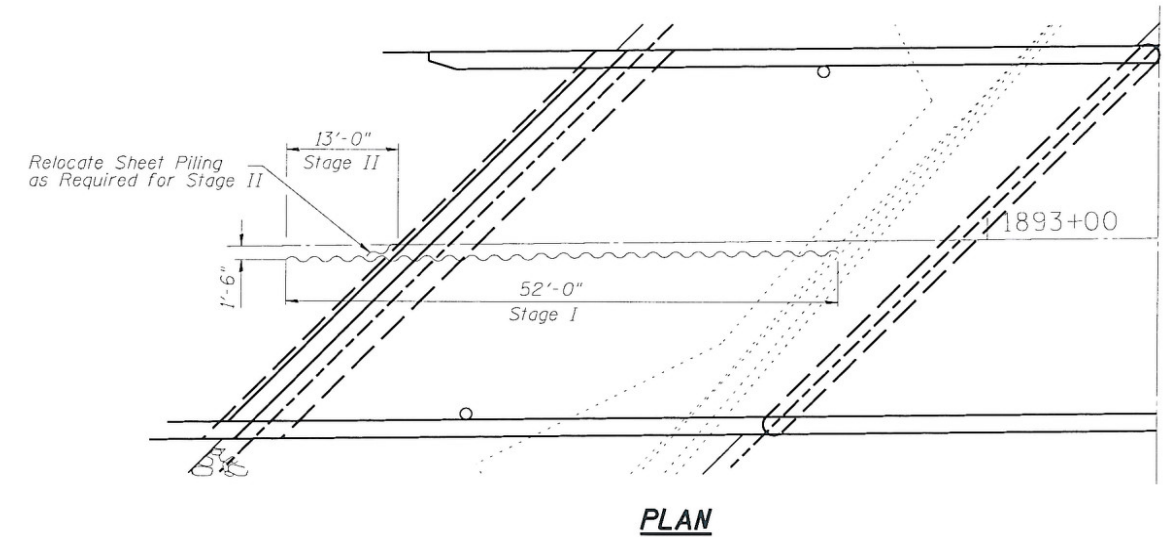
**STAGE I CONSTRUCTION**  
(Looking East)



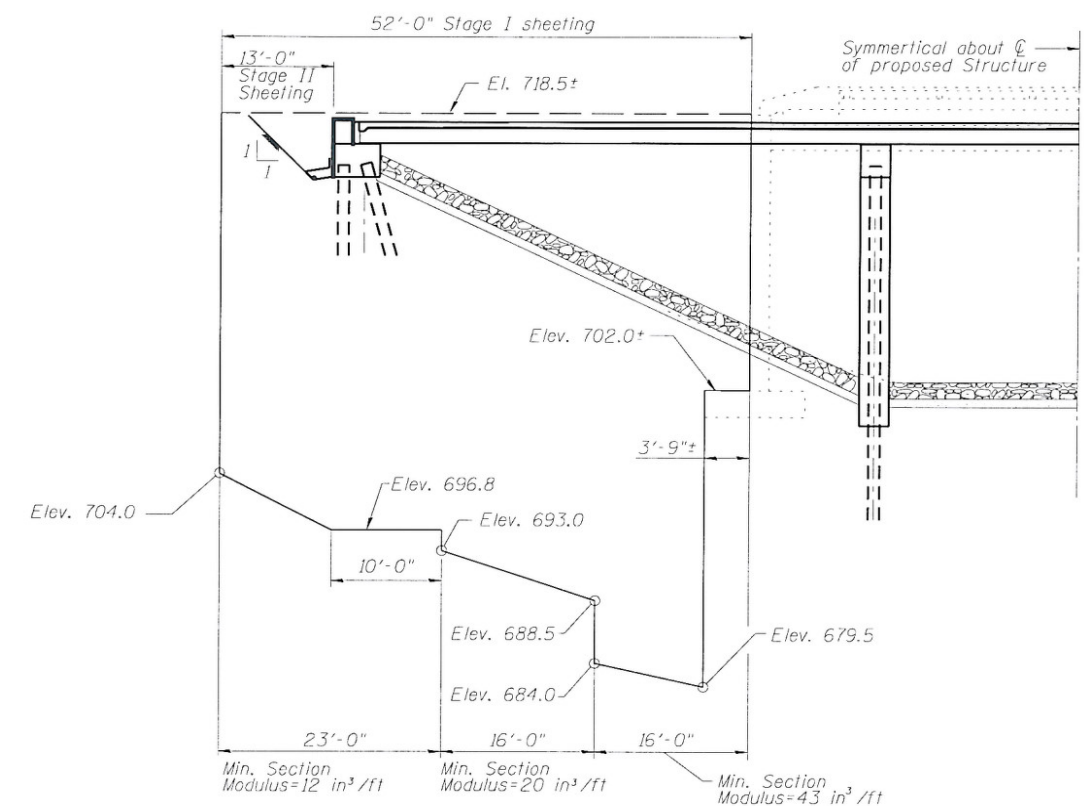
**STAGE II REMOVAL**  
(Looking East)



**STAGE II CONSTRUCTION**



**PLAN**



**ELEVATION**

**TEMPORARY SHEET PILING DETAIL ELEVATIONS**

(West approach shown, East approach similar.)  
(Looking North)

Notes:

If the Contractor chooses to alter the temporary cantilevered sheet piling design requirements shown on the plans, a design submittal including plan details and calculations will be required for review and acceptance by the Engineer.

The Contractor shall connect the first sheet to the existing abutment wall to ensure stability of sheets driven to the top of the existing footing. This connection shall be reviewed and accepted by the Engineer and included in the cost for Temporary Sheet Piling.

DESIGNED	JLG
CHECKED	JSP
DRAWN	UJ
CHECKED	JLG

**HR**  
HURST-ROSCHÉ  
ENGINEERS, INC.  
PROFESSIONAL DESIGN NUMBER: 184-000216

**STAGE CONSTRUCTION PLAN  
STRUCTURE NO. 010-0283**

SHEET NO. 3 24 SHEETS	F.A.P. RTE.	SECTION	COUNTY	TOTAL SHEETS	SHEET NO.
	709	(105BR)BR	CHAMPAIGN	55	15
SN 010-0283			CONTRACT NO. 70427		
FED. ROAD DIST. NO. 5 ILLINOIS FED. AID PROJECT					