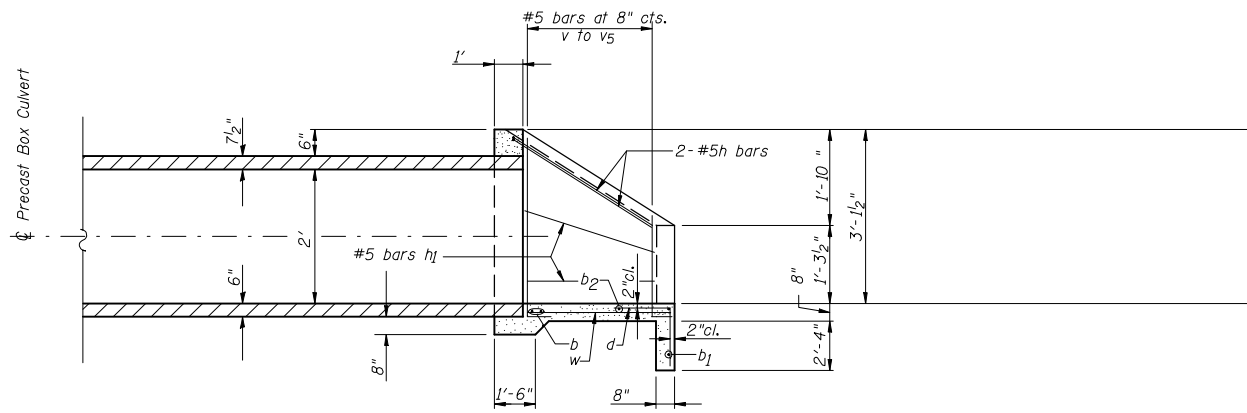
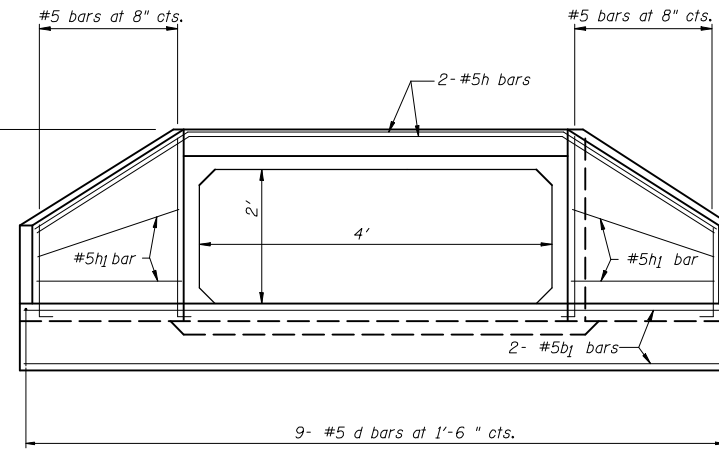


F.A.I. RTE.	SECTION	COUNTY	TOTAL SHEETS	SHEET NO.
57	(10-30)RA-1-2	CHAMPAIGN	119	35
STA.		TO STA.		
FED. ROAD DIST. NO.	ILLINOIS	FED. AID PROJECT		



SECTION A-A



END VIEW

**NOTES**

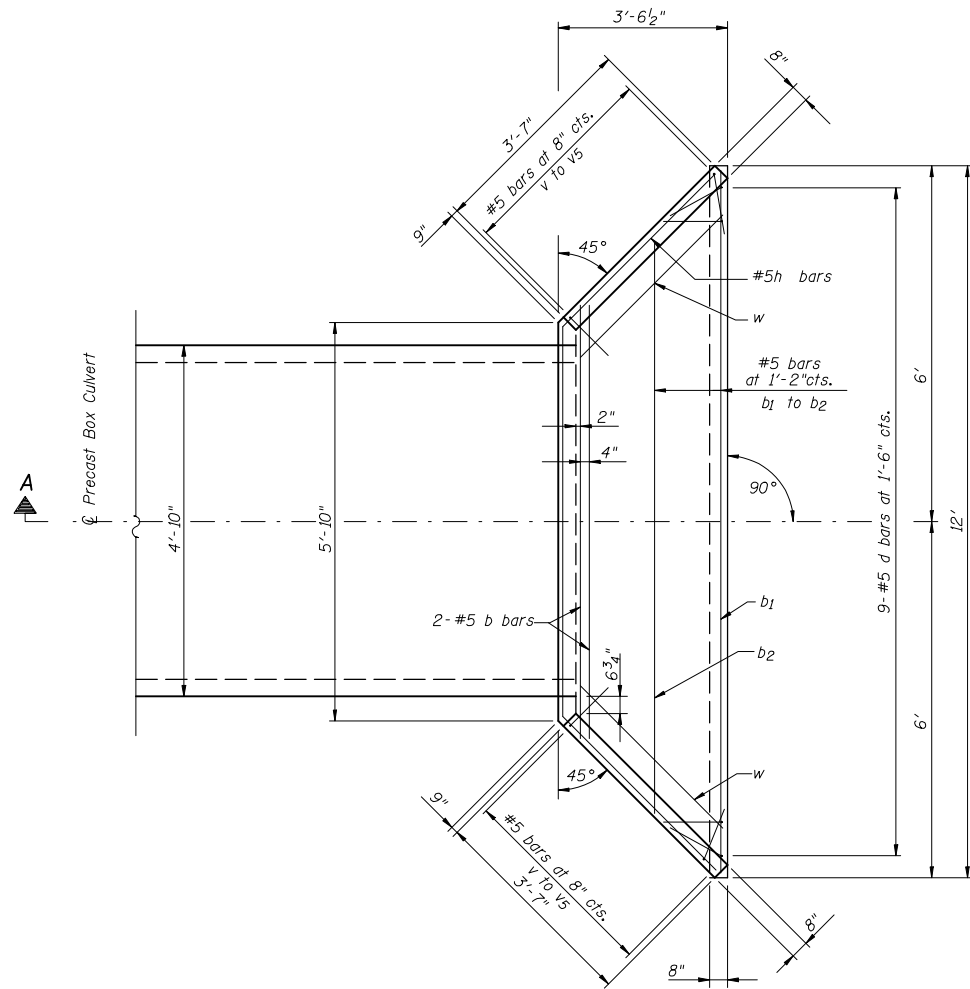
All bars shall be round and shall conform to the requirements of Art. 1006.10 of the Standard Specifications.

Class SI Concrete Headwalls shall be used throughout.

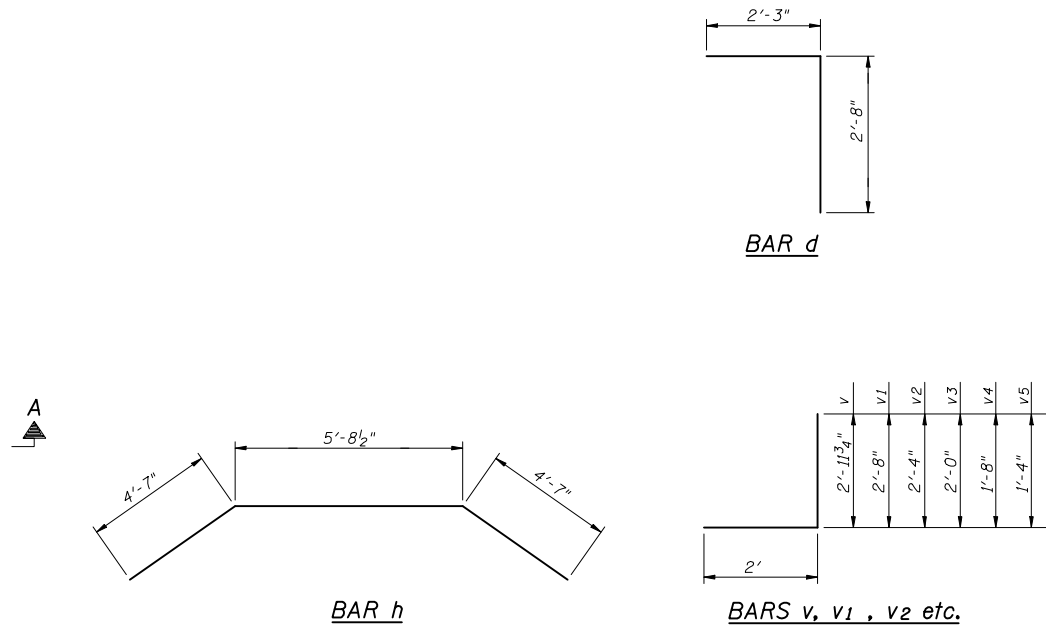
Build tops of headwalls parallel to grade line.

The Precast Concrete Box Culvert Sections shall conform to the requirements of AASHTO M273.

All dimensions are in inches (in) unless otherwise noted.



PLAN



**BILL OF MATERIAL  
(ONE HEADWALL)**

Bar	No.	Size	Length (ft)	Shape
b	2	#5	8.01	—
b1	2	#5	11.65	—
b2	1	#5	9.71	—
d	9	#5	4.86	└
h	2	#5	14.90	└
h1	4	#5	3.68	—
v	2	#5	5.00	└
v1	2	#5	4.67	└
v2	2	#5	4.34	└
v3	2	#5	4.01	└
v4	2	#5	3.68	└
v5	2	#5	3.35	└
w	2	#5	3.15	—
Reinforcement Bars			lbs.	204.0
Class SI Conc Headwalls			Cu.Yds.	2.7

BOX CULVERT END SECTIONS (CAST IN PLACE)  
STA. 211+41.75  
0° SKEW

REVISIONS	
NAME	DATE

ILLINOIS DEPARTMENT OF TRANSPORTATION

**REINFORCED CONCRETE  
HEADWALL DETAIL**

SCALE: VERT.  
HORIZ.  
DATE

DRAWN BY  
CHECKED BY