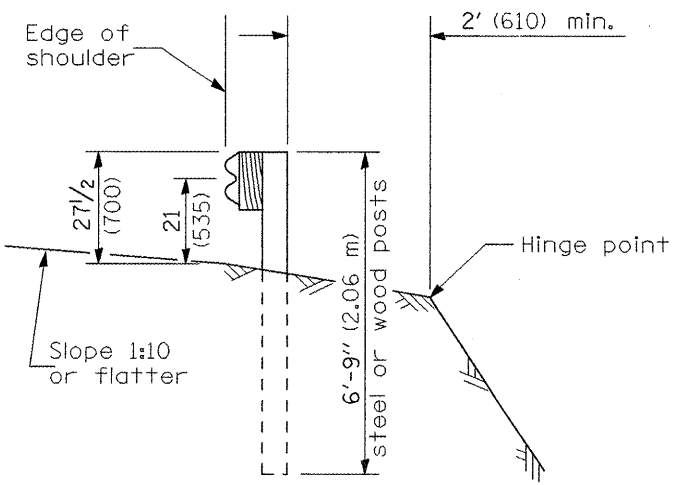
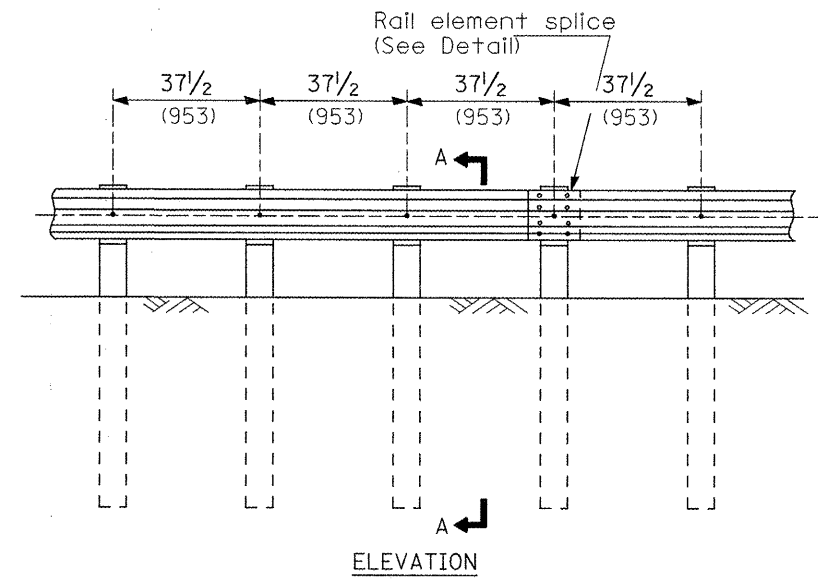


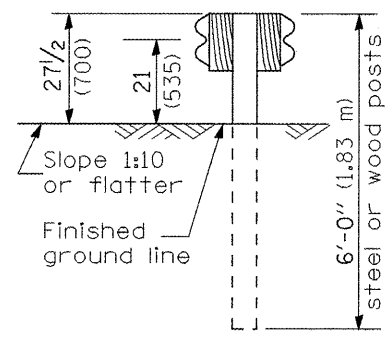
TYPE A
6'-3" (1.905 m) Typical post spacing



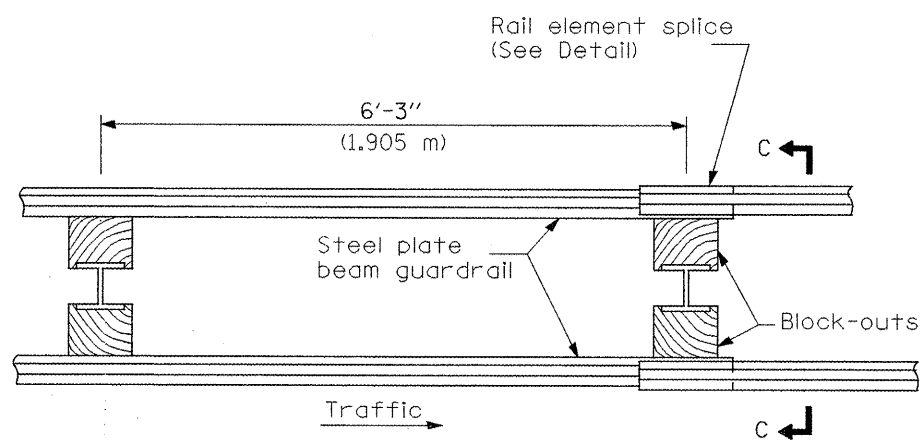
SECTION A-A



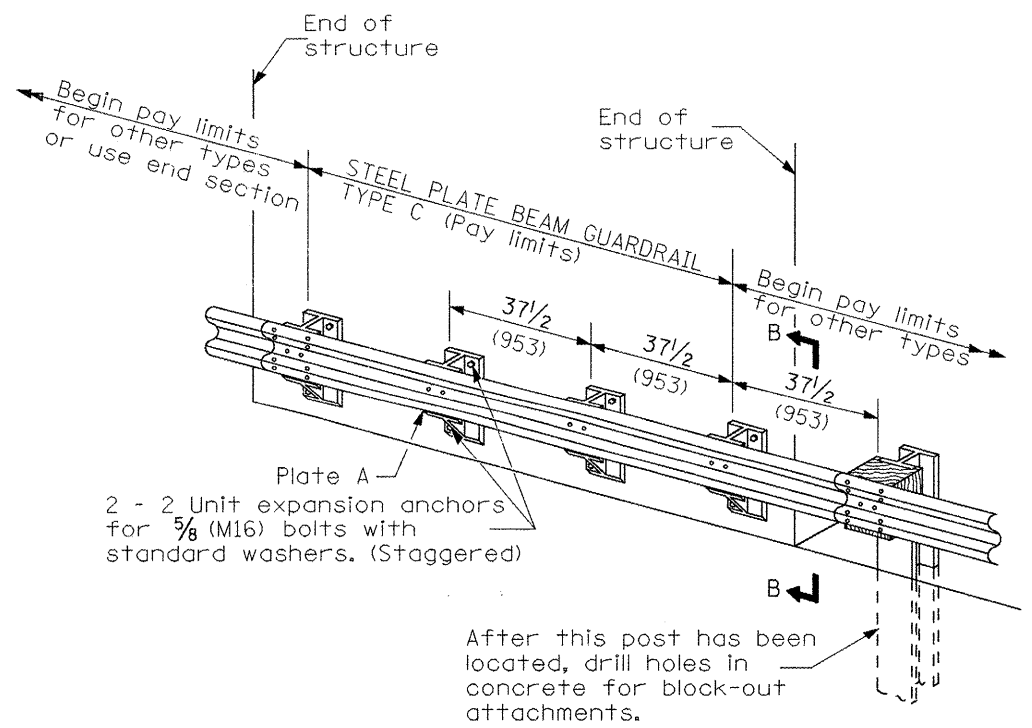
TYPE B
37 1/2 (953) Closed post spacing



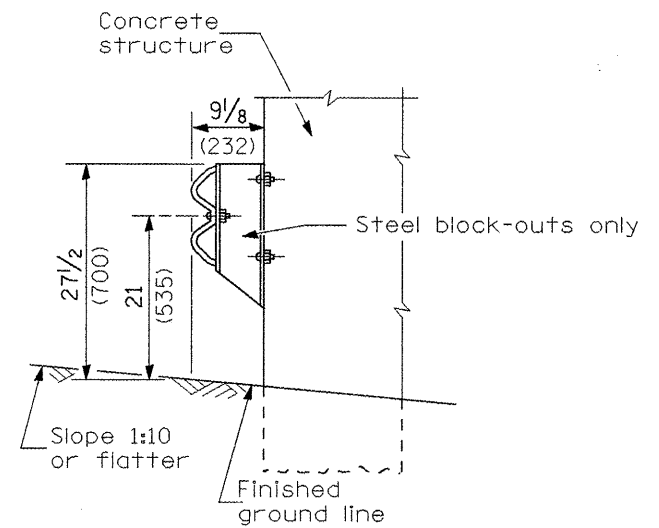
SECTION C-C



TYPE D
Double steel plate beam guardrail
6'-3" (1.905 m) typical post spacing



TYPE C
37 1/2 (953) Block-out spacing



SECTION B-B

GENERAL NOTES

All slope ratios are expressed as units of vertical displacement to units of horizontal displacement (V:H).

All dimensions are in millimeters (inches) unless otherwise shown.

The existing steel posts may be drilled to match the bolt pattern shown herein for the wood block-out, or a new steel post shall be provided.

This detail is applicable to the guardrail system used prior to January 1, 2007. For details on the Midwest Guardrail System, see Standard 630001.

All dimensions are in inches (millimeters) unless otherwise noted.

| | | |
|----------|------------|-----|
| 03-01-07 | NEW DETAIL | RJD |
|----------|------------|-----|

| | | | | |
|--|--|--|--|--|
| | | | | |
|--|--|--|--|--|

STATE OF ILLINOIS
DEPARTMENT OF TRANSPORTATION

GUARDRAIL SPECIAL DETAIL
(See Schedule of Quantities for Applicable H.W. Std or this Detail)

NOT TO SCALE

| F.A.S. RTE. | SECTION | COUNTY | TOTAL SHEETS | SHEET NO. |
|---|---------------------------|--------|--------------------|-----------|
| 2400 | 106RS-2; 107RS-4; 108RS-3 | KNOX | 29 | 18 |
| FED. ROAD DIST. NO. ILLINOIS FED. AID PROJECT | | | CONTRACT NO. 68472 | |