

F.A.P. RTE.	SECTION	COUNTY	TOTAL SHEETS	SHEET NO.
317	(35)RS-8	WOODFORD	60	49
		ILLINOIS	CONTRACT NO.	

FOR INFORMATION ONLY

STATE OF ILLINOIS
DEPARTMENT OF TRANSPORTATION
DIVISION OF HIGHWAYS

**PROPOSED
HIGHWAY PLANS**

FAP ROUTE 317 (US 24)
SECTION (35)RS-8
PAVEMENT PRESERVATION
PROJECT
WOODFORD COUNTY

C-94-055-05

RESURFACING FROM US 24B TO IL 117 IN EUREKA

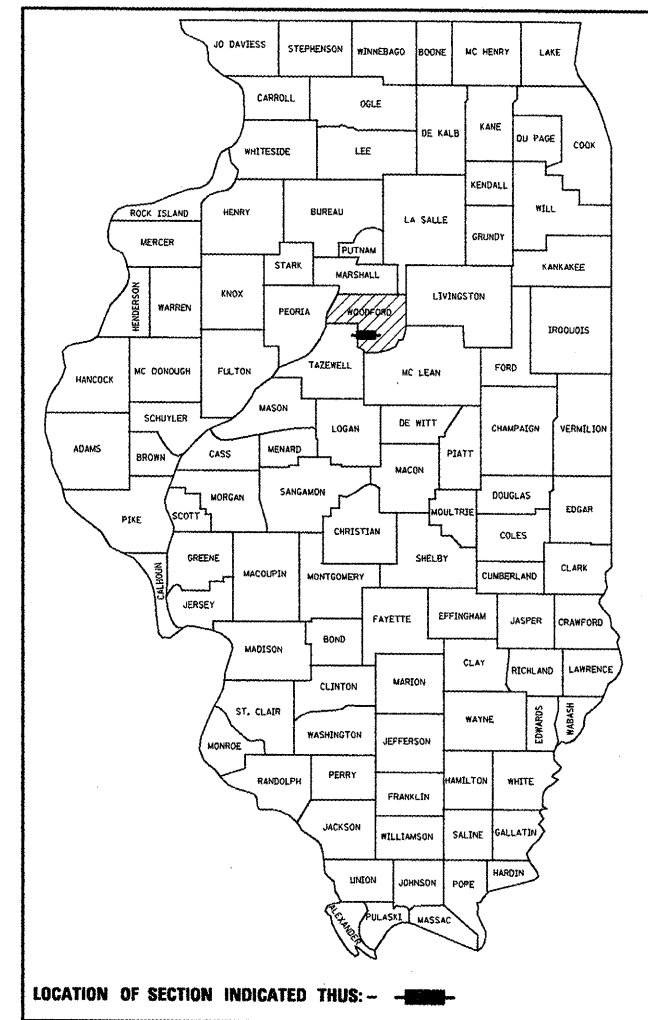
INDEX OF SHEETS

- 49. COVER SHEET
- 50. JOB SPECIFIC NOTES
- 51.-52. SUMMARY OF QUANTITIES
- 53.-54. TYPICAL SECTIONS
- 55.-56. SCHEDULES OF QUANTITIES
- 57.-59. PLAN SHEETS
- 60. DETAILS

HIGHWAY STANDARDS

- 000001-04 STANDARD SYMBOLS, ABBREVIATIONS AND PATTERNS
- 701001-01 OFF-ROAD OPERATIONS 2L, 2W, MORE THAN 4.5 m (15') AWAY
- 701006-01 OFF-ROAD OPERATIONS 2L, 2W, 4.5 m (15') TO 600 mm (24") FROM PAVEMENT EDGE
- 701011-01 OFF-ROAD MOVING OPERATIONS 2L, 2W, DAY ONLY
- 701301-02 LANE CLOSURE, 2L, 2W, SHORT TIME OPERATIONS
- 701306-01 LANE CLOSURE, 2L, 2W, SLOW MOVING OPERATIONS DAY ONLY, FOR SPEEDS ≥ 45 MPH
- 701311-02 LANE CLOSURE, 2L, 2W, MOVING OPERATIONS - DAY ONLY
- 702001-05 TRAFFIC CONTROL DEVICES
- 781001-02 TYPICAL APPLICATIONS RAISED REFLECTIVE PAVEMENT MARKERS

D-94-049-05

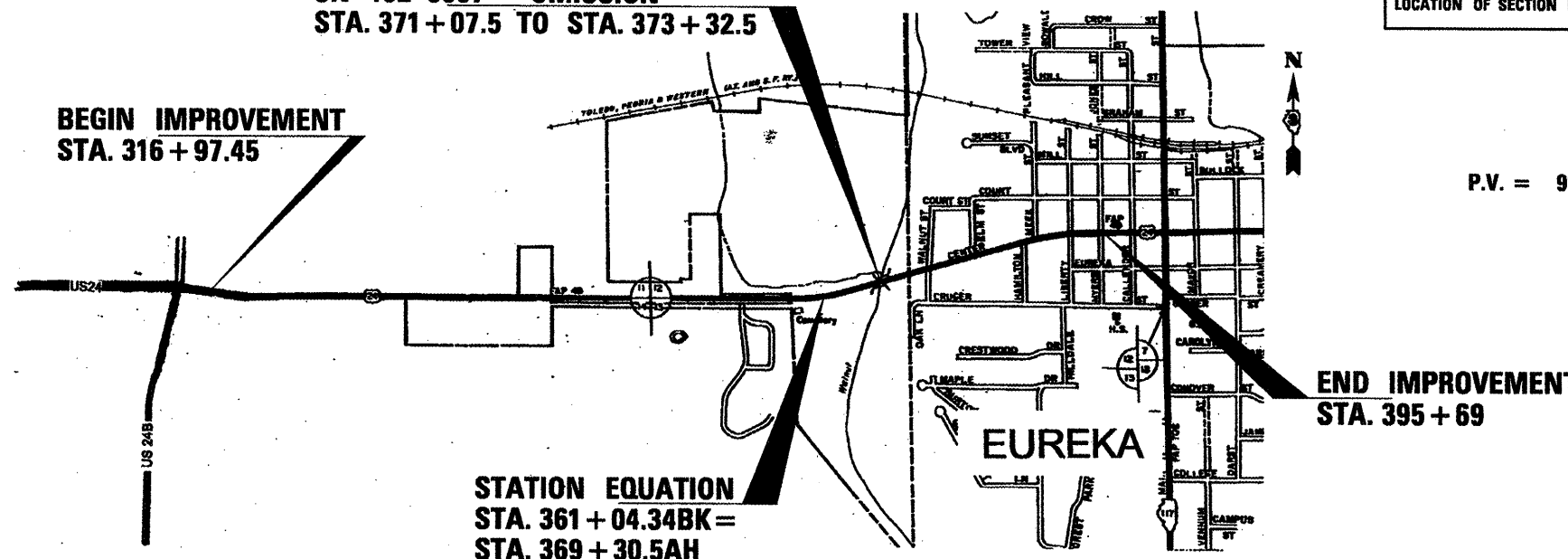


FUNCTION CLASSIFICATION
OTHER PRINCIPAL ARTERIAL

2005 ADT = 8700
P.V. = 91.0% S.U. = 3.6% M.U. = 5.4%

SN 102-0007 - OMISSION
STA. 371 + 07.5 TO STA. 373 + 32.5

BEGIN IMPROVEMENT
STA. 316 + 97.45



END IMPROVEMENT
STA. 395 + 69

STATION EQUATION
STA. 361 + 04.34BK =
STA. 369 + 30.5AH

FULL SIZE PLANS HAVE BEEN PREPARED USING STANDARD ENGINEERING SCALES, REDUCED SIZED PLANS WILL NOT CONFORM TO STANDARD SCALES, IN MAKING MEASUREMENTS ON REDUCED PLANS, THE ABOVE SCALES MAY BE USED.

MICROFILMED _____
REEL NUMBER _____
AWARDED _____
RESIDENT ENGINEER _____
AS BUILT CHANGES WERE MADE
ON THE FOLLOWING SHEETS _____

JULIE 1-800-892-0123

DISTRICT 3 NO. (815) 434-6131

PROJECT ENGINEER: RICK POWELL
UNIT CHIEF: BRAD DUNCAN

CONTRACT NO. 68467

LOCATION MAP
NOT TO SCALE

GROSS LENGTH = 7,045.39 FT. = 1.33 MI.
NET LENGTH = 6,820.39 FT. = 1.29 MI.

PRINTED BY THE AUTHORITY
OF THE STATE OF ILLINOIS