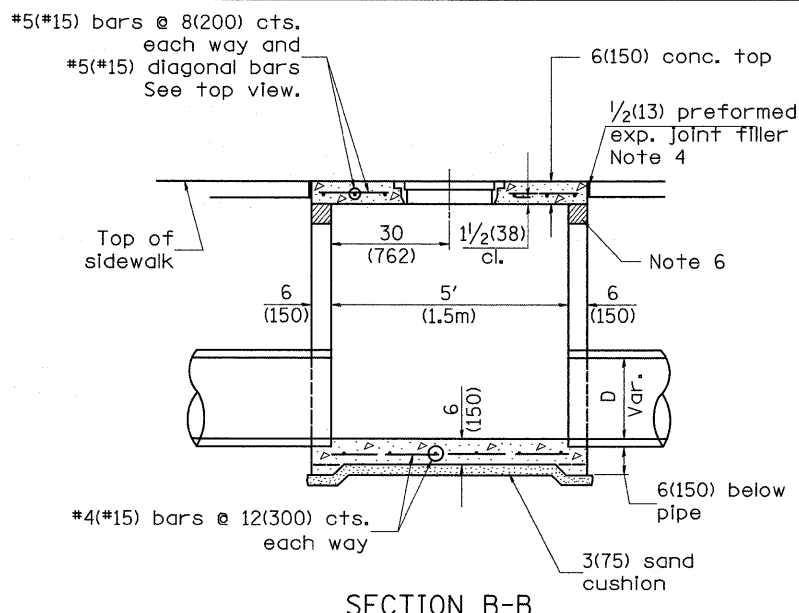


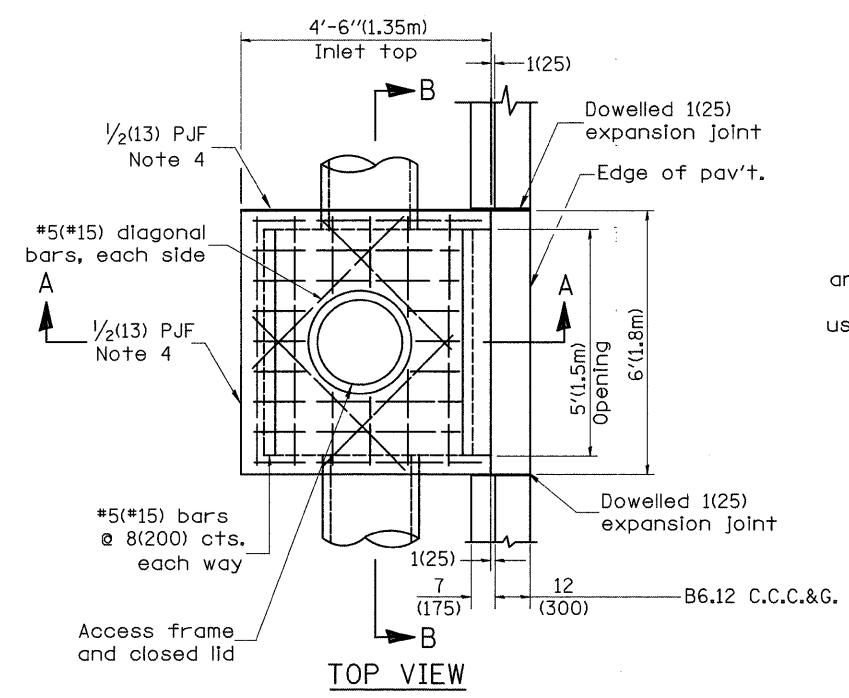
SECTION A-A



SECTION B-B

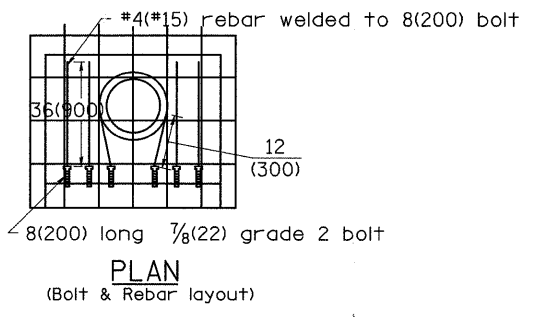
GENERAL NOTES

1. Class PC concrete for precast concrete and CLASS SI CONCRETE for cast-in-place concrete used throughout.
2. The sidewalks may be built as precast segmental sections.
3. Except as noted herein, INLET SPECIAL TYPE 1, TYPE2, AND, TYPE 3 shall be constructed in accordance with section 602 of the Standard Specifications.
4. 1/2(13) preformed expansion joints shall be provided on sides of inlet adjacent to sidewalks or other structures. (See section 1051)
5. Curb opening inlet frame, and access frame and lid shall be cast gray Iron and conform to A48-83 class 35B
Approximate weight:
Curb opening inlet frame: 100lbs/30(45kg/750)
section Access frame and lid: 160 lbs(73kg)/ casting.
6. The height of the box may be constructed 6(150) short to allow for field adjustment. The wall adjustments shall be made with concrete building brick or CLASS SI CONCRETE. (See article 1041.02 and applicable portions of section 503).

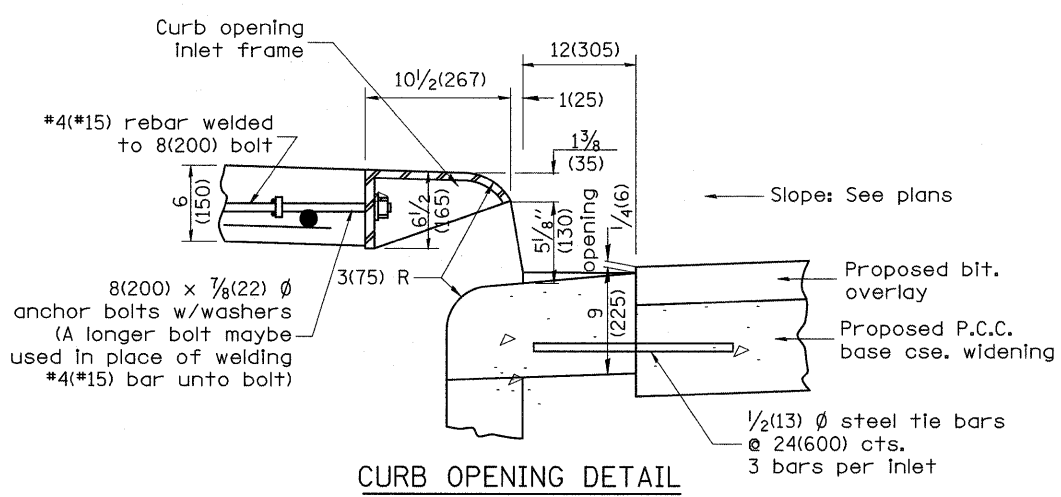


INLET SPECIAL TYPE 1

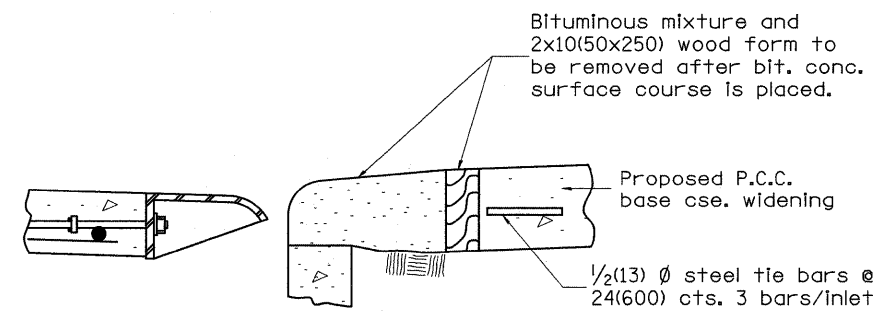
(Front Opening 4'-6" (1.35 Top))



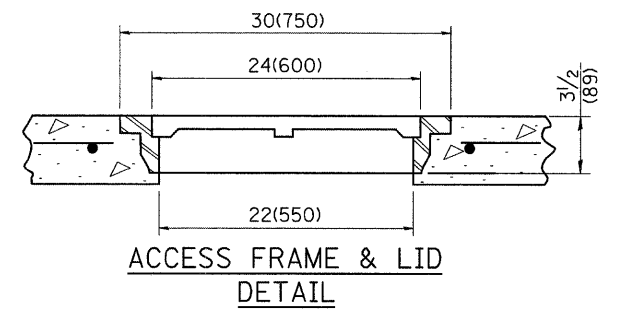
PLAN (Bolt & Rebar layout)



CURB OPENING DETAIL



CURB OPENING DETAIL FOR TEMPORARY PAVEMENT DRAINAGE



ACCESS FRAME & LID DETAIL

All dimensions are in inches (millimeters) unless otherwise noted.

| DATE | REVISIONS | BY |
|----------|---|------|
| 1-1-97 | RENUM B-4.12, NEW REVISION BOX, ADDED DESIGNER NOTES, NEW FORMAT. | |
| 10-16-06 | REVISED TO 2007 SPEC. | M.A. |
| | | |
| | | |
| | | |