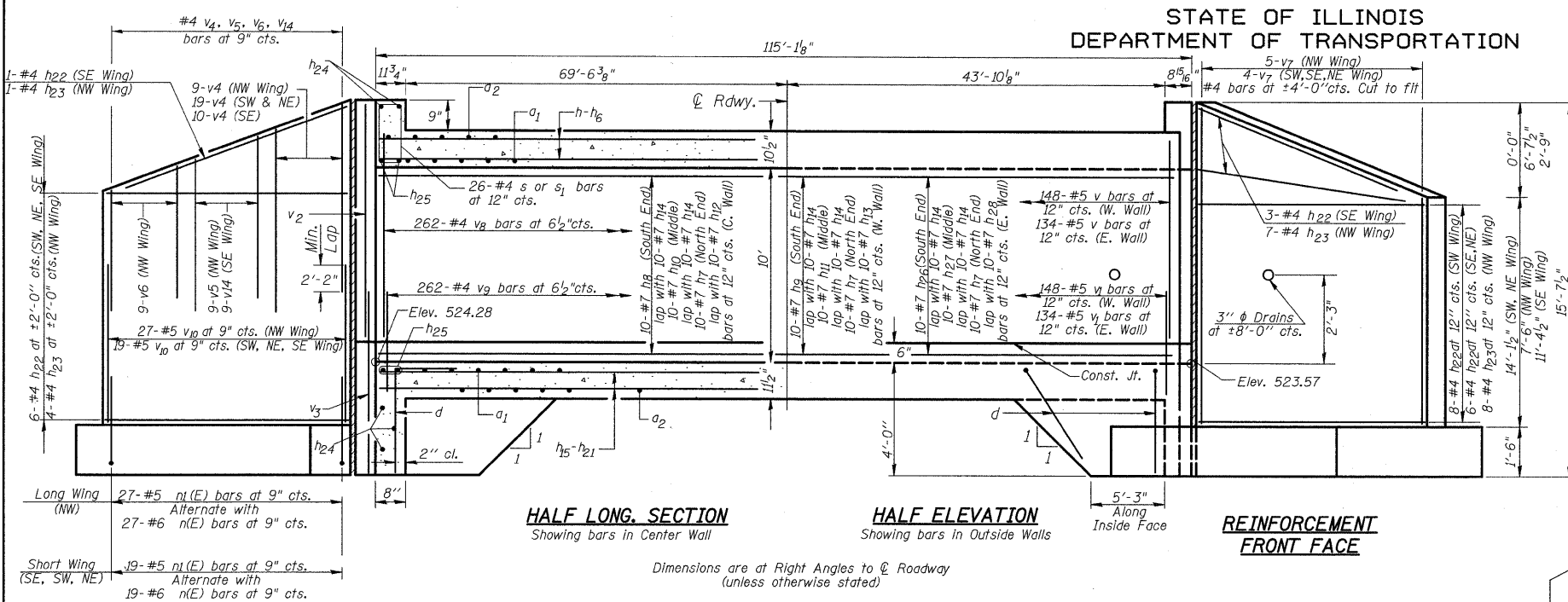
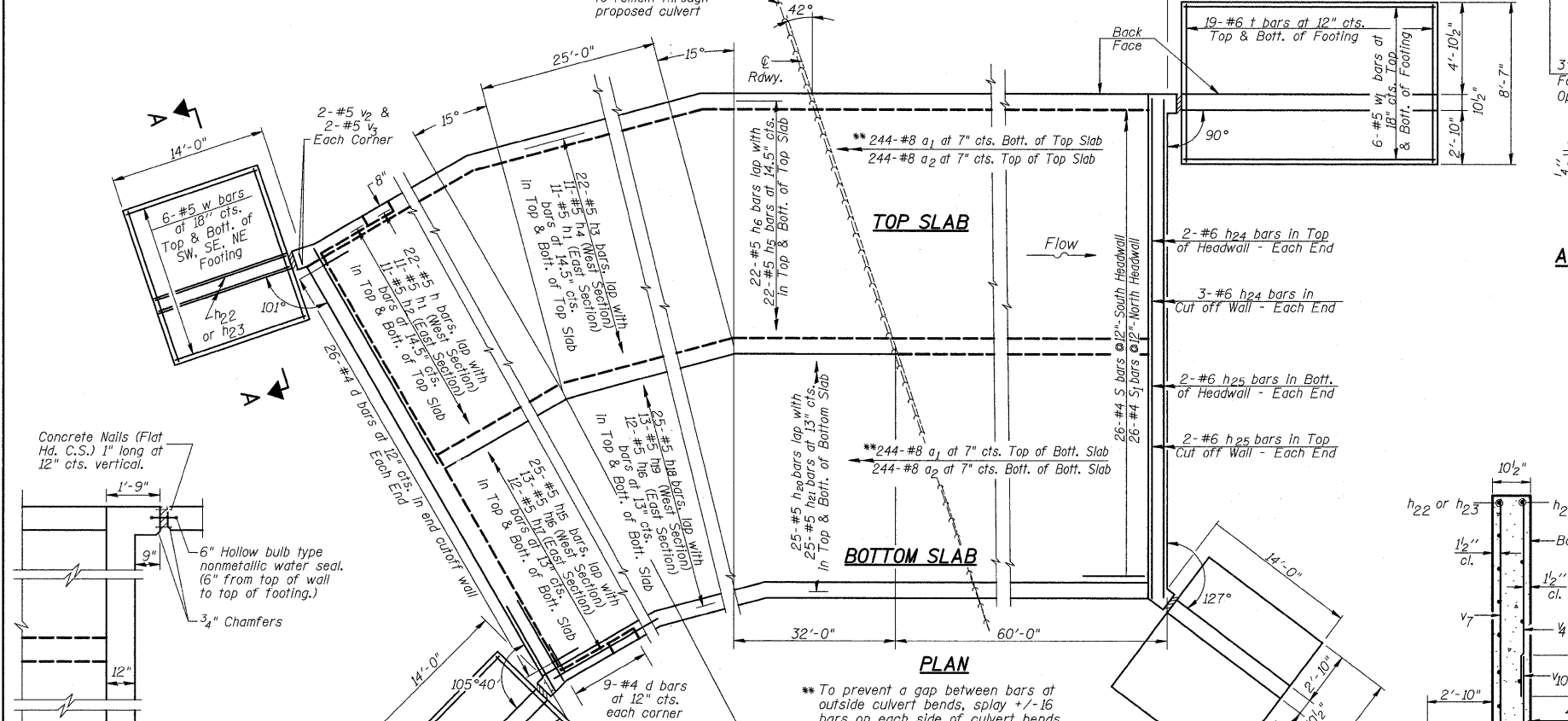


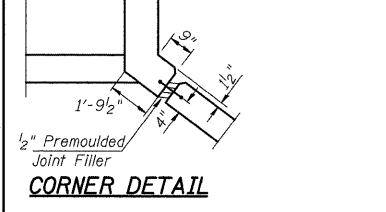
STATE OF ILLINOIS  
DEPARTMENT OF TRANSPORTATION



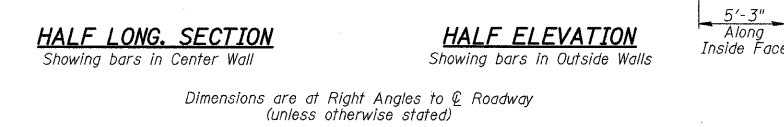
**REINFORCEMENT BACK FACE**



**PLAN**



**CORNER DETAIL**



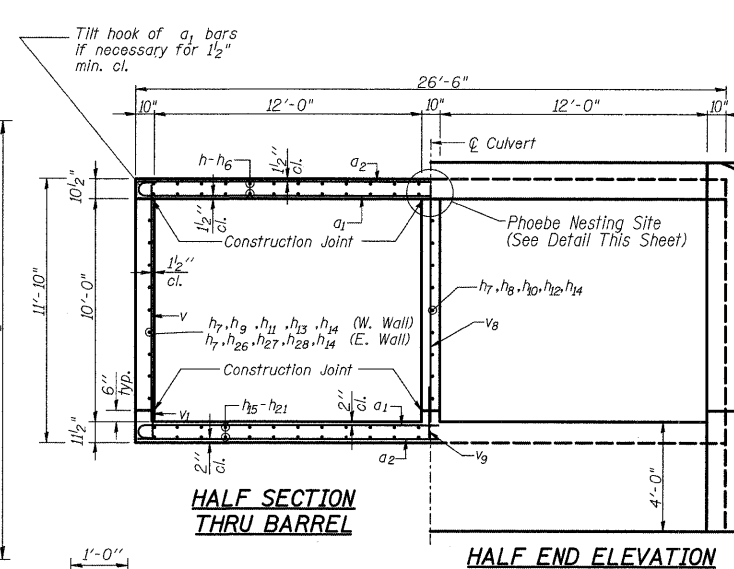
**HALF LONG SECTION**  
Showing bars in Center Wall



**HALF ELEVATION**  
Showing bars in Outside Walls



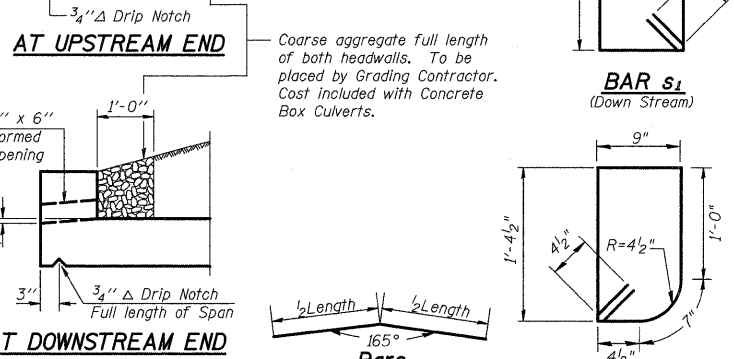
**REINFORCEMENT FRONT FACE**



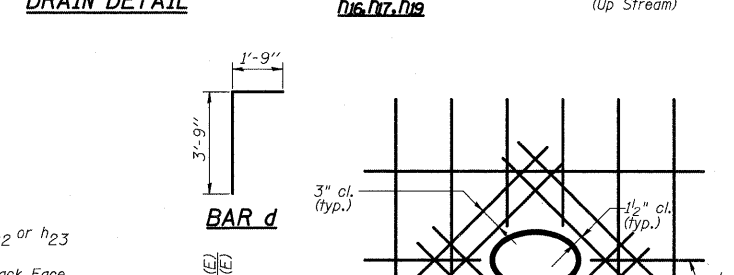
**HALF SECTION THRU BARREL**



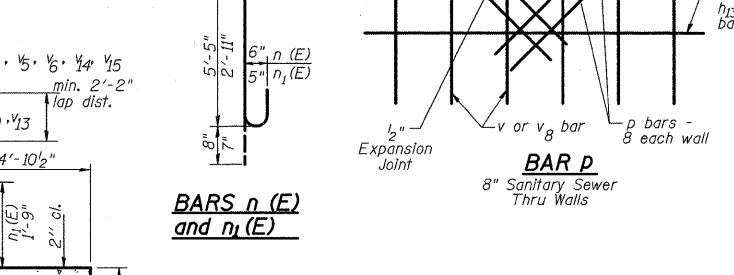
**HALF END ELEVATION**



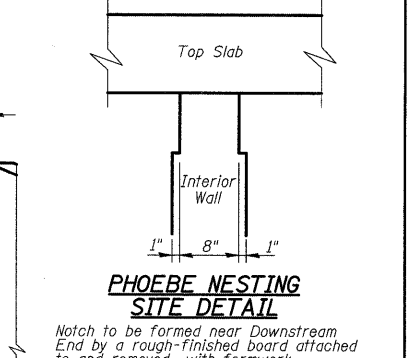
**DRAIN DETAIL**



**SECTION A-A**



**BAR a1**



**PHOEBE NESTING SITE DETAIL**

**BILL OF MATERIAL**

Bar	No.	Size	Length	Shape
a1	488	#8	28'-1"	[Shape]
a2	488	#8	26'-3"	[Shape]
d	88	#4	5'-6"	[Shape]
h	44	#5	23'-0"	[Shape]
h1	44	#5	12'-9"	[Shape]
h2	22	#5	9'-3"	[Shape]
h3	44	#5	21'-6"	[Shape]
h4	22	#5	19'-9"	[Shape]
h5	44	#5	42'-9"	[Shape]
h6	44	#5	50'-0"	[Shape]
h7	30	#7	50'-0"	[Shape]
h8	10	#7	24'-9"	[Shape]
h9	10	#7	26'-6"	[Shape]
h10	10	#7	25'-0"	[Shape]
h11	10	#7	28'-6"	[Shape]
h12	10	#7	44'-6"	[Shape]
h13	10	#7	46'-3"	[Shape]
h14	60	#7	5'-8"	[Shape]
h15	50	#5	23'-0"	[Shape]
h16	50	#5	10'-7"	[Shape]
h17	24	#5	7'-7"	[Shape]
h18	50	#5	21'-6"	[Shape]
h19	26	#5	17'-1"	[Shape]
h20	50	#5	41'-10"	[Shape]
h21	50	#5	50'-0"	[Shape]
h22	62	#4	13'-0"	[Shape]
h23	20	#4	19'-0"	[Shape]
h24	10	#6	26'-3"	[Shape]
h25	8	#6	26'-3"	[Shape]
h26	10	#7	23'-0"	[Shape]
h27	10	#7	21'-6"	[Shape]
h28	10	#7	42'-9"	[Shape]
d	24	#4	3'-0"	[Shape]
n(E)	84	#6	5'-5"	[Shape]
n1(E)	84	#5	2'-11"	[Shape]
t	116	#6	8'-4"	[Shape]
v	282	#5	10'-1"	[Shape]
v1	282	#5	1'-0"	[Shape]
v2	8	#5	10'-10 1/2"	[Shape]
v3	8	#5	6'-2"	[Shape]
v4	57	#4	9'-11"	[Shape]
v5	9	#4	7'-8 1/2"	[Shape]
v6	9	#4	5'-6"	[Shape]
v7	17	#4	13'-10 1/2"	[Shape]
v8	262	#4	10'-1"	[Shape]
v9	262	#4	1'-0"	[Shape]
v10	84	#4	6'-3"	[Shape]
v13	Not Used	-	-	-
v14	9	#4	8'-0"	[Shape]
v15	Not Used	-	-	-
w	36	#5	13'-9"	[Shape]
w1	12	#5	19'-9"	[Shape]
s	26	#4	4'-10 1/4"	[Shape]
s1	26	#4	5'-1 3/4"	[Shape]
Concrete Box Culverts		Cu. Yd.	452.2	
Reinf. Bars, Epoxy Coated		Pound	940	
Reinforcement Bars		Pound	106820	

**CULVERT DETAILS**  
STRUCTURE NO. 034-2524