

F.A. RTE.	SECTION	COUNTY	TOTAL SHEETS	SHEET NO.
*	6G-WPS0)BR	HANCOCK	41	1

*FAP ROUTE 522 (IL 96)

D-94-023-02



LOCATION OF SECTION INDICATED THUS: -

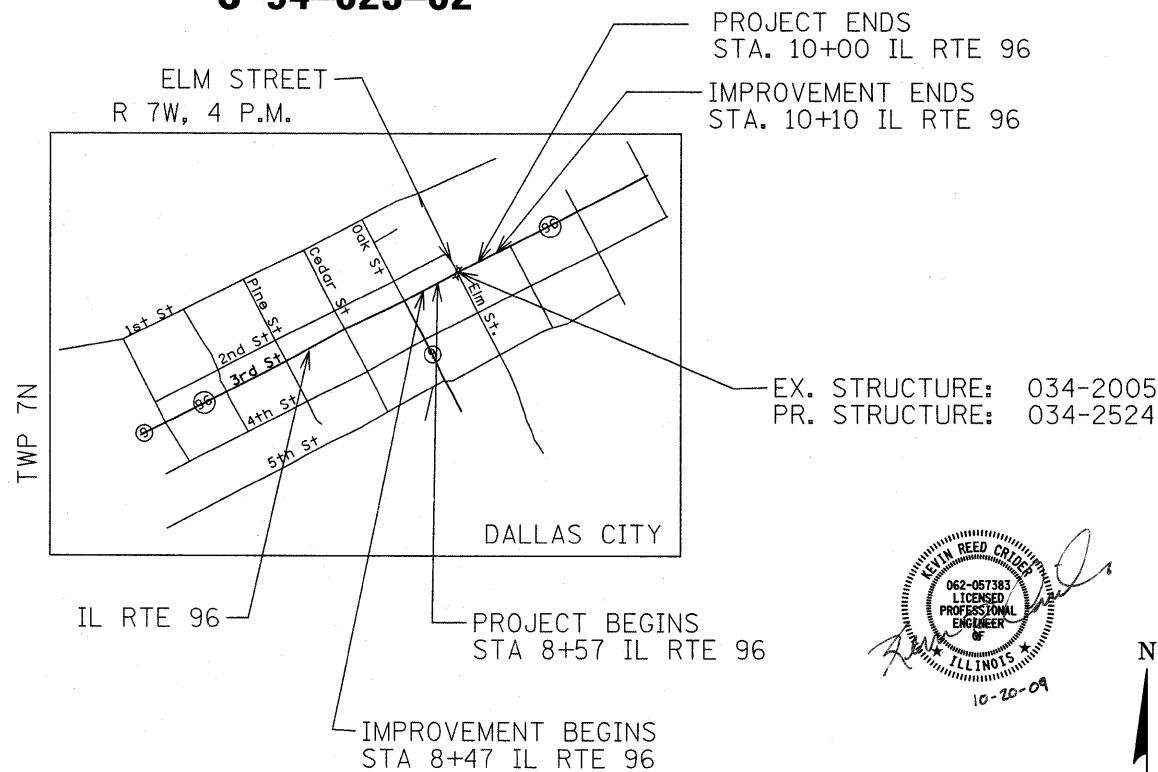
GEOTECH
ENGINEERING & TESTING, INC.

601 NORTH 4th STREET MURRAY, KENTUCKY 42071
 500 SOUTH 17th STREET PADUCAH, KENTUCKY 42003
 403 NORTH COURT STREET MARION, ILLINOIS 62959
 PHONE - 270.753.7307 PHONE - 270.443.1995 PHONE - 618.997.9190

STATE OF ILLINOIS
 DEPARTMENT OF TRANSPORTATION
 DIVISION OF HIGHWAYS
**PROPOSED
 HIGHWAY PLANS**

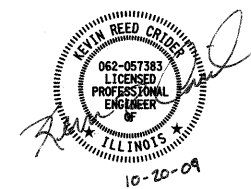
FAP ROUTE 522 (IL 96)
 SECTION (6G-WPS0)BR
 PROJECT NO. *ACF-0522(007)*
 HANCOCK COUNTY

C-94-023-02



PROJECT ENDS
 STA. 10+00 IL RTE 96
 IMPROVEMENT ENDS
 STA. 10+10 IL RTE 96

EX. STRUCTURE: 034-2005
 PR. STRUCTURE: 034-2524



JOB DESCRIPTION

This project consists of removing a single barrel concrete arch box culvert carrying IL 96 over Thompson Creek and replacing it with a 12' X 10' double barrel cast-in-place box culvert (existing S.N. 034-2005, proposed S.N. 034-2524), new hot-mix pavement, and relocating South Elm Street.

FAP RTE 522 (IL 96):

GROSS LENGTH OF PROJECT : 163 FT. = 0.031 MILES
 NET LENGTH OF PROJECT: 143 FT. = 0.027 MILES

APPROX. SCALE
1" = 1000'

FOR INDEX OF SHEETS, SEE SHEET NO. 2
 FOR SUMMARY OF QUANTITIES, SEE SHEET NO.4

STATION EQUATION:
NONE

OMISSIONS:
NONE

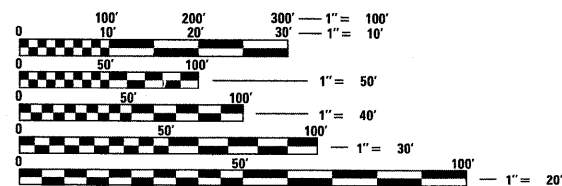
DESIGN DESIGNATION

MINOR ARTERIAL (NON-URBAN)
 ADT = 2150
 ADTT =175

HIGHWAY STANDARDS

000001-05	666001-01
001001-02	668001-01
280001-05	701901-01
353001-04	720001-01
424001-05	720006-02
482006-03	780001-02
542601-02	BLR23-3
602306-02	701001-02
602401-02	701006-03
602501-01	701011-02
602701-02	BLR21-8
604001-03	BLR22-6
606001-04	
630001-08	
664001-02	

TOWNSHIPS: DALLAS CITY



FULL SIZE PLANS HAVE BEEN PREPARED USING STANDARD ENGINEERING SCALES. REDUCED SIZED PLANS WILL NOT CONFORM TO STANDARD SCALES. IN MAKING MEASUREMENTS ON REDUCED PLANS, THE ABOVE SCALES MAY BE USED.

J.U.L.I.E.
 JOINT UTILITY LOCATION INFORMATION
 FOR EXCAVATION 1-800-892-0123

CONTRACT NO. 68214

CATALOG NO. 032494-00D

PROJECT ENGINEER: JIM MILLER (309) 671-3451

PRINTED BY THE AUTHORITY
 OF THE STATE OF ILLINOIS

STATE OF ILLINOIS
 DEPARTMENT OF TRANSPORTATION
 DIVISION OF HIGHWAYS

SUBMITTED *06/23/09* 20 09

DEPUTY DIRECTOR OF HIGHWAYS, REGION ENGINEER

Scott Stitt P.E.
 ENGINEER OF DESIGN AND ENVIRONMENT

Christine M. Reed
 DIRECTOR OF HIGHWAYS, CHIEF ENGINEER