

| | | | | |
|-------------|---------|-----------------------------|--------------|-----------|
| F.A.S. RTE. | SECTION | COUNTY | TOTAL SHEETS | SHEET NO. |
| 1323 | (102) | KANKAKEE | 11 | 1 |
| | | ILLINOIS CONTRACT NO. 66986 | | |

P-93-010-10
D-93-026-10

STATE OF ILLINOIS
DEPARTMENT OF TRANSPORTATION
DIVISION OF HIGHWAYS
**PROPOSED
HIGHWAY PLANS**

FAS ROUTE 1323 (ILL 115)
SECTION (102)

TYPE of IMPROVEMENT-
BOX CULVERT REPLACEMENT
KANKAKEE COUNTY

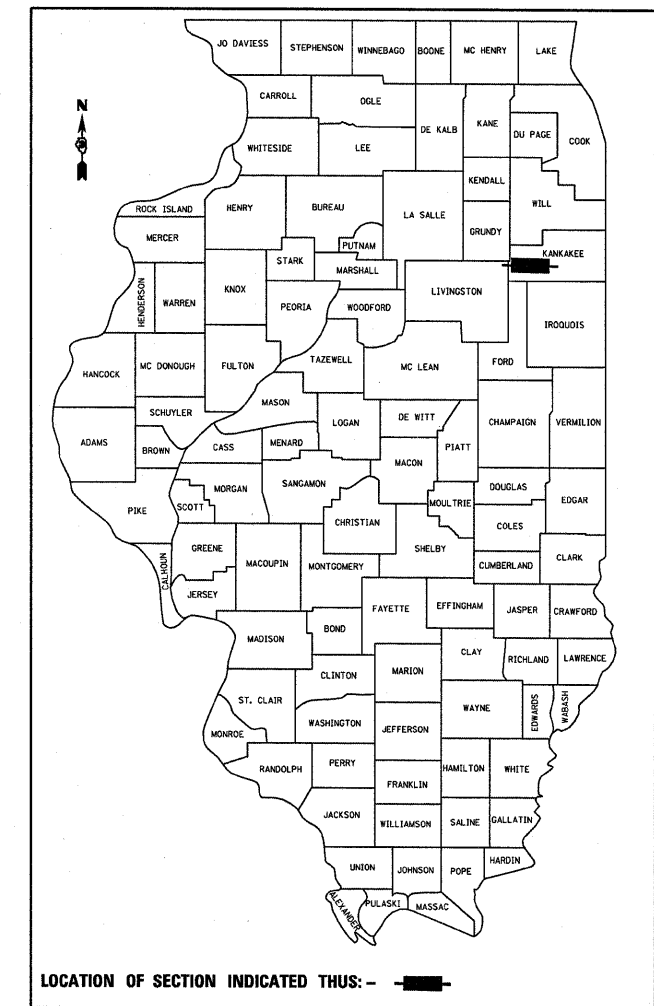
C-93-065-10

INDEX OF SHEETS

- 1 COVER SHEET & HIGHWAY STANDARDS
- 2 GENERAL NOTES AND TYPICAL SECTION
- 3 SUMMARY OF QUANTITIES
- 4 SCHEDULES
- 5 PLAN & PROFILE
- 6 GRATE DETAIL
- 7 GENERAL DETAIL SHEET
- 8 EXISTING STRUCTURE
- 9 BOX CULVERT DETAIL
- 10 BOX CULVERT END SECTION DETAIL
- 11 CROSS SECTION

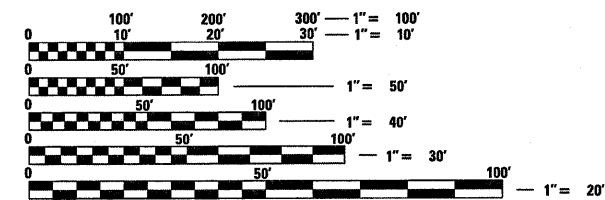
STANDARDS

- 000001-05 STANDARD SYMBOLS, ABBREVIATIONS AND PATTERNS
- 001006 DECIMAL OF AN INCH AND OF A FOOT
- 280001-05 TEMPORARY EROSION CONTROL SYSTEMS
- 666001-01 RIGHT-OF-WAY MARKERS
- 667101-01 PERMANENT SURVEY MARKERS
- 701001-02 OFF-ROAD OPERATIONS 2L, 2W, MORE THAN 15' (4.5 m) AWAY
- 701006-03 OFF-ROAD OPERATIONS 2L, 2W, 15' (4.5 m) TO 24" (600 mm) FROM PAVEMENT EDGE
- 701011-02 OFF-ROAD MOVING OPERATIONS 2L, 2W, DAY ONLY
- 701201-03 LANE CLOSURE, 2L, 2W, DAY ONLY, FOR SPEEDS **e** 45 MPH
- 701301-03 LANE CLOSURE, 2L, 2W, SHORT TIME OPERATIONS
- 701306-02 LANE CLOSURE, 2L, 2W, SLOW MOVING OPERATIONS DAY ONLY, FOR SPEEDS **e** 45 MPH
- 701901-01 TRAFFIC CONTROL DEVICES
- 780001-02 TYPICAL PAVEMENT MARKINGS
- 781001-03 TYPICAL APPLICATIONS RAISED REFLECTIVE PAVEMENT MARKERS



LOCATION OF SECTION INDICATED THUS: - - -

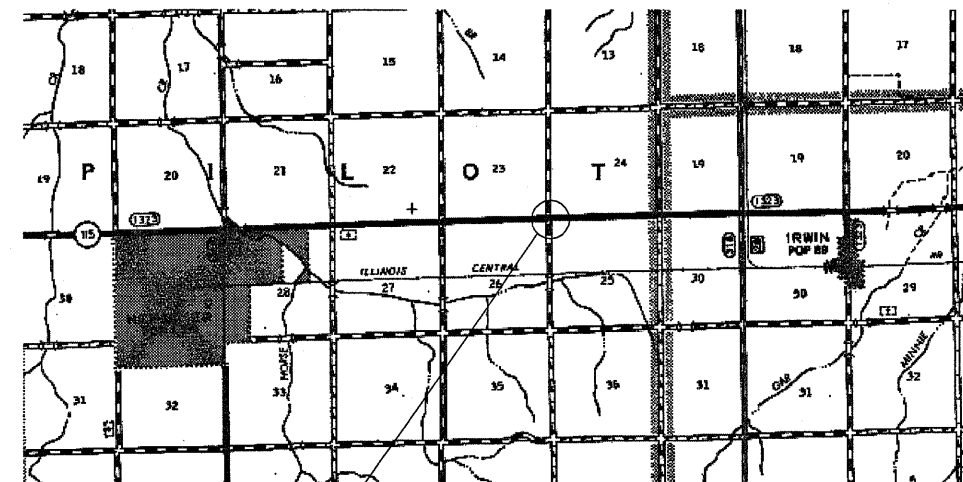
HIGHWAY CLASSIFICATION MAJOR COLLECTOR (RURAL)
ADT (2009) 2350 P.C. = 85% S.U. = 10% M.U. = 5%



FULL SIZE PLANS HAVE BEEN PREPARED USING STANDARD ENGINEERING SCALES. REDUCED SIZED PLANS WILL NOT CONFORM TO STANDARD SCALES. IN MAKING MEASUREMENTS ON REDUCED PLANS, THE ABOVE SCALES MAY BE USED.

J.U.L.I.E.
JOINT UTILITY LOCATION INFORMATION FOR EXCAVATION
1-800-892-0123
OR 811

PROJECT ENGINEER: JOE KANNEL
UNIT CHIEF: PATRICK BRABOY
TOWNSHIP: PILOT
CONTRACT NO. 66986



PROJECT LOCATION
EXIST SN 046-2523
PROP SN 046-2553

GROSS LENGTH = NET LENGTH = 150 FT. = 0.03 MILE

STATE OF ILLINOIS
DEPARTMENT OF TRANSPORTATION
DIVISION OF HIGHWAYS

SUBMITTED DEC 7 20 09
Maureen Ryan
DEPUTY DIRECTOR OF HIGHWAYS, REGION ENGINEER

January 09 20 10
Scott E. Stettin
ASSISTANT ENGINEER OF DESIGN AND ENVIRONMENT

January 09 20 10
Christine M. Roedel
DIRECTOR OF HIGHWAYS, CHIEF ENGINEER

PRINTED BY THE AUTHORITY
OF THE STATE OF ILLINOIS

GENERAL NOTES
(Revised May 13, 2009)

THE THICKNESS OF HMA SHOWN ON THE PLANS IS THE NOMINAL THICKNESS. DEVIATIONS FROM THE NOMINAL THICKNESS WILL BE PERMITTED WHEN SUCH DEVIATIONS OCCUR DUE TO IRREGULARITIES IN THE EXISTING SURFACE OR BASE ON WHICH THE HMA IS PLACED.

THE HMA SURFACE OF ALL MAILBOX TURNOUTS, PRIVATE ENTRANCES, COMMERCIAL ENTRANCES, AND SIDE ROADS SHALL BE MADE NEATLY, IN A WORKMANLIKE MANNER, AND SHALL ACCURATELY CONFORM TO THE SHAPES AND DIMENSIONS SHOWN ON THE PLAN DETAILS. IF REQUIRED BY THE ENGINEER, THE CONTRACTOR SHALL BE REQUIRED TO SAW CUT THE HMA SURFACE TO CONFORM TO THE SHAPES AND DIMENSIONS SHOWN ON THE PLAN DETAILS. THIS WORK SHALL BE INCLUDED IN THE COST OF THE HMA SURFACE.

EXCEPT AS NOTED ON THE PLANS, PAVEMENT GRADES SHOWN ARE AT THE TOP OF PAVEMENT SURFACES.

BEFORE ORDERING PIPE CULVERTS OR PIPE DRAINS, THE CONTRACTOR SHALL CONSULT THE ENGINEER FOR EXACT LENGTHS.

THE ENGINEER WILL BE THE SOLE JUDGE CONCERNING CURING TIME FOR THE VARIOUS HMA LIFTS.

FOR STABILIZATION, ALL TYPE III BARRICADES SHALL REQUIRE A MINIMUM OF FOUR SAND BAGS PER BARRICADE.

SEEDING SHALL NOT BE PERMITTED AT ANY TIME WHEN THE GROUND IS FROZEN, WET, OR IN AN UNTILLABLE CONDITION. LOCATIONS TO BE SEEDED WILL BE DETERMINED BY THE ENGINEER.

THE FINISHED EARTHWORK SHALL HAVE A VEGETATION SUSTAINING SOIL COVERING THE TOP FOUR INCHES IN AREAS TO BE SEEDED OR SODDED. THE VEGETATION SUSTAINING SOIL REQUIRED WILL NOT BE PAID FOR SEPARATELY BUT SHALL BE INCLUDED IN THE COST OF SEEDING.

ALL ELEVATIONS REFERRING TO U.S.G.S. MEAN SEA LEVEL DATUM.

ABANDONED UNDERGROUND UTILITIES THAT CONFLICT WITH CONSTRUCTION SHALL BE DISPOSED OF OUTSIDE THE LIMITS OF THE RIGHT OF WAY ACCORDING TO ARTICLE 202.03 OF THE STANDARD SPECIFICATIONS AND AS DIRECTED BY THE ENGINEER. THIS WORK WILL NOT BE PAID FOR SEPARATELY, BUT SHALL BE INCLUDED IN THE COST OF EARTH EXCAVATION.

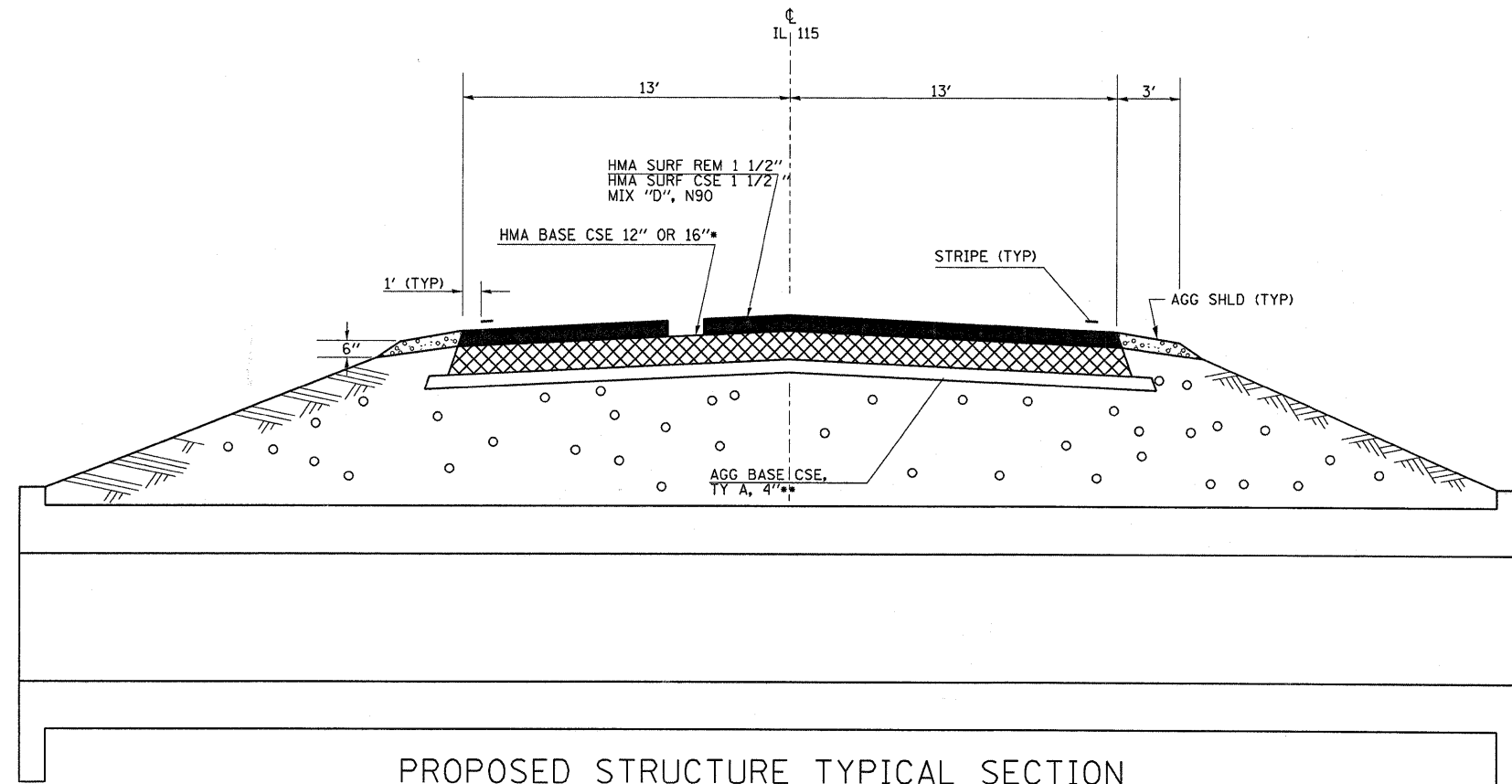
ANY REFERENCE TO A STANDARD IN THESE PLANS SHALL BE INTERPRETED TO MEAN THE EDITION AS INDICATED BY THE SUBNUMBER SHOWN IN THE LIST OF STANDARDS OR THE COPY INCLUDED IN THESE PLANS.

THE FOLLOWING RATES OF APPLICATION HAVE BEEN USED IN CALCULATING PLAN QUANTITIES:

| | | |
|---|-------|----------------------------|
| GRANULAR MATERIALS | 2.05 | TONS / CU YD |
| BIT MATERIALS (PRIME COAT) ON AGGREGATE BASES | 0.375 | GAL / SQ YD |
| FOR ADDITIONAL HMA LIFTS "FOG COAT" | 0.08 | GAL / SQ YD |
| FOR ADDITIONAL HMA LIFTS "FOG COAT" | 0.05 | GAL / SQ YD |
| AGGREGATE PRIME COAT | 0.002 | TONS / SQ YD |
| HMA RESURFACING | 112 | LBS / SQ YD / IN |
| SHORT TERM PAVEMENT MARKING | 10 | FT / 100 FT OF APPLICATION |
| TEMPORARY DITCH CHECKS | 5 | TONS AGGREGATE |

THE WORK REQUIRED TO CONNECT ANY SEWER TO AN EXISTING DRAINAGE STRUCTURE OR PIPE WILL NOT BE PAID FOR SEPARATELY, BUT SHALL BE CONSIDERED AS INCLUDED IN THE CONTRACT UNIT PRICE BID FOR THE SEWER ITEMS.

THE CONTRACTOR SHALL CONTACT JULIE AT LEAST 48 HOURS PRIOR TO EXCAVATION TO DETERMINE WHICH UTILITIES ARE IN THE AREA.



PROPOSED STRUCTURE TYPICAL SECTION
STA 357+98 TO STA 358+12 (@ NEW STRUCTURE) (*12" HMA BSE CSE **NO AGG BSE CSE)
STA 358+23 TO STA 358+37 (@ STRUCTURE REMOVAL) (*16" HMA BSE CSE **4" AGG BSE CSE)

SEQUENCE OF CONSTRUCTION:

1. PLACE NEW 8'X3' BOX CULVERT
2. REMOVE EXISTING STRUCTURE
3. HMA SURF REM 1 1/2", FROM STA 357+50 TO STA 359+00 (MILL THROUGH HMA BSE CSE 12" OR 16")
4. PLACE 1 1/2" SURF CSE

| | SURFACE CSE | HMA BINDER (LOWER 4") | HMA BINDER (UPPER 8-12") |
|------------------------|-------------------|-----------------------|--------------------------|
| PG GRADE | PG 64-22 | PG 58-22 | PG 64-22 |
| DESIGN AIR VOIDS | 4% @ N50 | 3% @ N30 | 4% @ N50 |
| MIXTURE COMPOSITION | IL 12.5 OR IL 9.5 | IL 19.0 | IL 19.0 |
| FRICTION AGGREGATE | MIXTURE C | | |
| DENSITY CONTROL LIMITS | CORES | CORES* | CORES |

*MATERIALS SHALL BE COMPACTED TO 93.0-97.4 PERCENT OF THE MAXIMUM THEORETICAL DENSITY, EXCEPT THAT WHEN PLACED AS FIRST LIFT ON AN UNIMPROVED SUBGRADE THE MINIMUM PERCENT COMPACTION SHALL BE 92.0 PERCENT. THE MAXIMUM THEORETICAL DENSITY SHALL BE DETERMINED FROM THE MOVING AVERAGE AS SPECIFIED IN THE QC-QA SPECIFICATION.
** WHEN MORE THAN 20% RAP IS USED, A SOFTER ASPHALT BINDER (PG58-22) MAY BE REQUIRED AS DETERMINED BY THE ENGINEER.

STATE OF ILLINOIS
DEPARTMENT OF TRANSPORTATION
DISTRICT THREE

PREPARED BY: *John P. Romo*
Acting DISTRICT STUDIES & PLANS ENGINEER

DATE: _____

EXAMINED BY: *John P. Romo*
DISTRICT CONSTRUCTION ENGINEER

John P. Romo
DISTRICT MATERIALS ENGINEER

Bruce A. Buckner
DISTRICT OPERATIONS ENGINEER

| REVISIONS | |
|-----------|------|
| NAME | DATE |
| | |
| | |
| | |
| | |
| | |

ILLINOIS DEPARTMENT OF TRANSPORTATION

GENERAL NOTES

| | | | | | | | | | | |
|---|----------------------|------------|--------------------|---|----------------------|-------------|-----------|--------|--------------|---------------------------|
| FILE NAME = | USER NAME = braboygc | DESIGNED - | REVISED - | STATE OF ILLINOIS DEPARTMENT OF TRANSPORTATION | GENERAL NOTES | F.A.S. RTE. | SECTION | COUNTY | TOTAL SHEETS | SHEET NO. |
| c:\pwork\pwork\braboygc\d0155828\0368986-SHT-PLNPRF-355-361.dgn | DRAWN - | REVISED - | 1323 | | | (102) | KANKAKEE | 11 | 2 | |
| PLDT SCALE = 20.0000' / IN. | CHECKED - | REVISED - | CONTRACT NO. 66986 | | | | | | | |
| PLDT DATE = Dec 05, 2009 04:00:05 PM | DATE - | REVISED - | SCALE: | | | SHEET NO. | OF SHEETS | STA. | TO STA. | ILLINOIS FED. AID PROJECT |

| SUMMARY OF QUANTITIES | | | | | |
|-----------------------|--|--------|----------------|-------------------|------|
| CODE NO | ITEM | UNIT | TOTAL QUANTITY | CONSTR. TYPE CODE | |
| | | | | ROADWAY 1000 | Y007 |
| 20200100 | EARTH EXCAVATION | CU YD | 44.0 | 44.0 | |
| 20400800 | FURNISHED EXCAVATION | CU YD | 83.0 | 83.0 | |
| 21400100 | GRADING AND SHAPING DITCHES | FOOT | 160.0 | 160.0 | |
| 25000300 | SEEDING, CLASS 3 | ACRE | 0.05 | 0.05 | |
| 25000400 | NITROGEN FERTILIZER NUTRIENT | POUND | 5.0 | 5.0 | |
| 25000500 | PHOSPHORUS FERTILIZER NUTRIENT | POUND | 5.0 | 5.0 | |
| 25000600 | POTASSIUM FERTILIZER NUTRIENT | POUND | 5.0 | 5.0 | |
| 25100115 | MULCH, METHOD 2 | ACRE | 0.05 | 0.05 | |
| 28000250 | TEMPORARY EROSION CONTROL SEEDING | POUND | 15.0 | 15.0 | |
| 28000500 | INLET AND PIPE PROTECTION | EACH | 2.0 | 2.0 | |
| 28100107 | STONE RIPRAP, CLASS A4 | SQ YD | 40.0 | 40.0 | |
| 28200200 | FILTER FABRIC | SQ YD | 40.0 | 40.0 | |
| 35100300 | AGGREGATE BASE COURSE, TYPE A 4" | SQ YD | 52.0 | 52.0 | |
| 35501332 | HOT-MIX ASPHALT BASE COURSE, 12" | SQ YD | 52.0 | 52.0 | |
| 35501347 | HOT-MIX ASPHALT BASE COURSE, 16" | SQ YD | 52.0 | 52.0 | |
| 40600100 | BITUMINOUS MATERIALS (PRIME COAT) | GALLON | 110.0 | 110.0 | |
| 40600300 | AGGREGATE (PRIME COAT) | TON | 4.0 | 4.0 | |
| 40600990 | TEMPORARY RAMP | SQ YD | 32.0 | 32.0 | |
| 40603310 | HOT-MIX ASPHALT SURFACE COURSE, MIX "C", N50 | TON | 64.0 | 64.0 | |
| 44000100 | PAVEMENT REMOVAL | SQ YD | 104.0 | 104.0 | |
| 44000155 | HOT-MIX ASPHALT SURFACE REMOVAL, 1 1/2" | SQ YD | 714.0 | 714.0 | |
| 48101200 | AGGREGATE SHOULDERS, TYPE B | TON | 26.0 | 26.0 | |
| 48203029 | HOT-MIX ASPHALT SHOULDERS, 8" | SQ YD | 16.0 | 16.0 | |
| 50100100 | REMOVAL OF EXISTING STRUCTURES | EACH | 1.0 | 1.0 | |
| X0326835 | PRECAST CONCRETE BOX CULVERT 8' X 3' (M273), SPECIAL | FOOT | 38.0 | | 38.0 |
| 66600105 | FURNISHING AND ERECTING RIGHT-OF-WAY MARKERS | EACH | 2.0 | 2.0 | |
| 66700095 | PERMANENT SURVEY MARKERS | EACH | 1.0 | 1.0 | |
| 67100100 | MOBILIZATION | L SUM | 1.0 | 1.0 | |
| 70100460 | TRAFFIC CONTROL AND PROTECTION, STANDARD 701306 | L SUM | 1.0 | 1.0 | |
| 70300100 | SHORT-TERM PAVEMENT MARKING | FOOT | 55.0 | 55.0 | |
| 70300220 | TEMPORARY PAVEMENT MARKING- LINE 4" | FOOT | 330.0 | 330.0 | |
| 70300240 | TEMPORARY PAVEMENT MARKING - LINE 6" | FOOT | 60.0 | 60.0 | |
| 70301000 | WORK ZONE PAVEMENT MARKING REMOVAL | SQ FT | 15.0 | 15.0 | |
| 78001110 | PAINT PAVEMENT MARKING - LINE 4" | FOOT | 330.0 | 330.0 | |
| 78001130 | PAINT PAVEMENT MARKING - LINE 6" | FOOT | 60.0 | 60.0 | |
| 78300200 | RAISED REFLECTIVE PAVEMENT MARKER REMOVAL | EACH | 2.0 | 2.0 | |
| X0324043 | GRATING FOR CONCRETE HEADWALL | EACH | 2.0 | | 2.0 |
| X5400900 | BOX CULVERT END SECTIONS, SPECIAL | EACH | 2.0 | | 2.0 |

* SPECIALTY ITEMS

| | | | | | | | | | | |
|---|----------------------|------------|--------------------|---|------------------------------|-------------|-----------|--------|--------------|---------------------------|
| FILE NAME = | USER NAME = braboypc | DESIGNED - | REVISED - | STATE OF ILLINOIS DEPARTMENT OF TRANSPORTATION | SUMMARY OF QUANTITIES | F.A.S. RTE. | SECTION | COUNTY | TOTAL SHEETS | SHEET NO. |
| cr\pw_work\pwsdot\braboypc\d0155828\036986-SHT-PLNPRF-355-361.dgn | DRAWN - | REVISED - | 1323 | | | (102) | KANKAKEE | 11 | 3 | |
| PLOT SCALE = 20.0000' / IN. | CHECKED - | REVISED - | CONTRACT NO. 66986 | | | | | | | |
| PLOT DATE = Dec 05, 2009 - 04:00:20 PM | DATE - | REVISED - | SCALE: | | | SHEET NO. | OF SHEETS | STA. | TO STA. | ILLINOIS FED. AID PROJECT |

| MAINLINE | | | | | | | |
|-----------------------------|--------|------------------------|----------------------------|-------------|-------------|-------------------|---------------|
| LOCATION | LENGTH | HMA SURF CSE 1 1/2" | HMA SURF REMOVAL 1 1/2" | AGG (PR CT) | TEMP RAMP | BIT MATLS (PR CT) | AGG SHLD TY B |
| STATION | FT | TON | SQ YD | TON | SQ YD | GAL | TON |
| STA 357+50 to STA 359+00 | 150 | 40.0 | 434.0 | 2.0 | 16.0 | 60.0 | 20.0 |
| 9000W SIDEROAD (NORTH SIDE) | 40 | 12.0 | 140.0 | 1.0 | 8.0 | 25.0 | 3.0 |
| 9000W SIDEROAD (SOUTH SIDE) | 40 | 12.0 | 140.0 | 1.0 | 8.0 | 25.0 | 3.0 |
| TOTAL | | 64.0 | 714.0 | 4.0 | 32.0 | 110.0 | 26.0 |

| GRADING AND SHAPING DITCHES* | | |
|---|--------|-----------------------------|
| LOCATION | LENGTH | GRADING AND SHAPING DITCHES |
| STATION | FEET | FOOT |
| IL 115 STA 358+00 To 358+30(LT & RT) | 60 | 60 |
| 9000W ROAD STA 19+20 TO 19+70 (RT) | 50 | 50 |
| STA 20+30 TO 20+80(RT) | 50 | 50 |
| TOTAL | | 160 |

* THIS QUANTITY IS TO ASSURE POSITIVE DRAINAGE FOR THE PROPOSED BOX CULVERT

| PRECAST CONCRETE BOX CULVERT | | | | | | | | | | | |
|------------------------------|--------------------------------------|-----------------------------|-------------------------------|------------------|------------------|---------------------|------------------|---------------|------------------|----------------------|---------------------------|
| LOCATION | 8'X3' PRECAST BOX CULV. M273 SPECIAL | BOX CULVERT END SEC SPECIAL | GRATING FOR CONCRETE HEADWALL | HMA BSE CSE, 12" | HMA BSE CSE, 16" | AGG BSE CSE, TA, 4" | PAVEMENT REMOVAL | FILTER FABRIC | RIPRAP CLASS A4* | FURNISHED EXCAVATION | REMOVE EXISTING STRUCTURE |
| STATION | LIN FT | EACH | EACH | SQ YD | SQ YD | SQ YD | SQ YD | SQ YD | SQ YD | CU YD | SQ YD |
| STA 358+05 | 38 | 2 | 2 | 41 | | | 41 | 40 | 40 | | |
| 358+30 | | | | | 41 | 41 | 41 | | | 83 | 1 |
| TOTAL | 38 | 2 | 2 | 41 | 41 | 41 | 82 | 40 | 40 | 83 | 1 |

* SEE PLAN SHEET FOR LOCATION

| SEEDING SCHEDULE | | | | | | | |
|----------------------|--------------------|------------------------------|-------------------------------|---------------------------------|-------------------|------------------------------|----------------------------|
| LOCATION | SEEDING CLASS 3 | NITROGEN FERTILIZER NUTRIENT | POTASSIUM FERTILIZER NUTRIENT | PHOSPHOROUS FERTILIZER NUTRIENT | MULCH METHOD 2 | TEMP EROSION CONTROL SEEDING | INLET AND PIPE PROTECTION* |
| STATION | ACRE | POUND | POUND | POUND | ACRE | POUND | EACH |
| STA 358+00 TO 358+50 | 0.05 | 5.0 | 5.0 | 5.0 | 0.05 | 15.0 | 2.0 |
| TOTAL | 0.05 | 5.0 | 5.0 | 5.0 | 0.05 | 15.0 | 2.0 |

*PLACE NEAR PROPOSED CULVERT END SECTIONS

| EARTH EXCAVATION | | |
|--------------------------|-------|-----------|
| STA TO STA | LT/RT | EARTH EX |
| | | CU YD |
| STA 357+90 TO STA 358+40 | RT | 15 |
| STA 357+90 TO STA 358+40 | LT | 25 |
| TOTALS | | 40 |

| ROW MARKERS | |
|--------------|-------------|
| LOCATION | ROW MARKERS |
| EACH | |
| NE QUADRANT | 1 |
| SE QUADRANT | 1 |
| TOTAL | 2 |

| PAVEMENT MARKINGS | | | | | | | | |
|--------------------------|--------|-------------------------------|--------------------------------|--------------------------------|---------------------------------|--------------------------------|-------------------------|--------------------|
| LOCATION | LENGTH | TEMP PVMT MARKING 4" WHITE | TEMP PVMT MARKING 6" YELLOW | PAINT PVMT MARKING 4" WHITE | PAINT PVMT MARKING 6" YELLOW | RAISED REF PVMT MARKER REM* | SHORT TERM PVMT MARKING | WORK ZONE PVMT REM |
| STATION | FEET | FOOT | FOOT | FOOT | FOOT | EACH | FOOT | SQ FT |
| STA 357+50 to STA 359+00 | 150 | 300 | 40 | 300 | 40 | 2 | 45 | 10.0 |
| 9000 W SIDEROAD | 100 | 30 | 20 | 30 | 20 | | 10 | 5.0 |
| TOTAL | | 330 | 60 | 330 | 60 | 2 | 55 | 15.0 |

* NO NEED TO REPLACE RRP

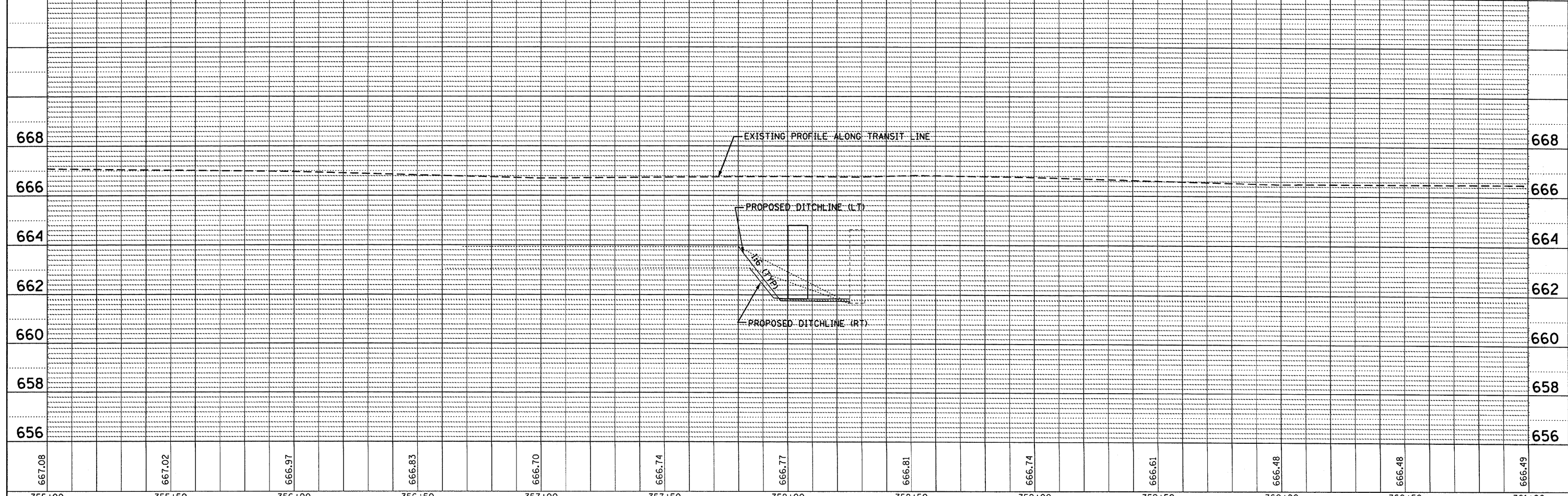
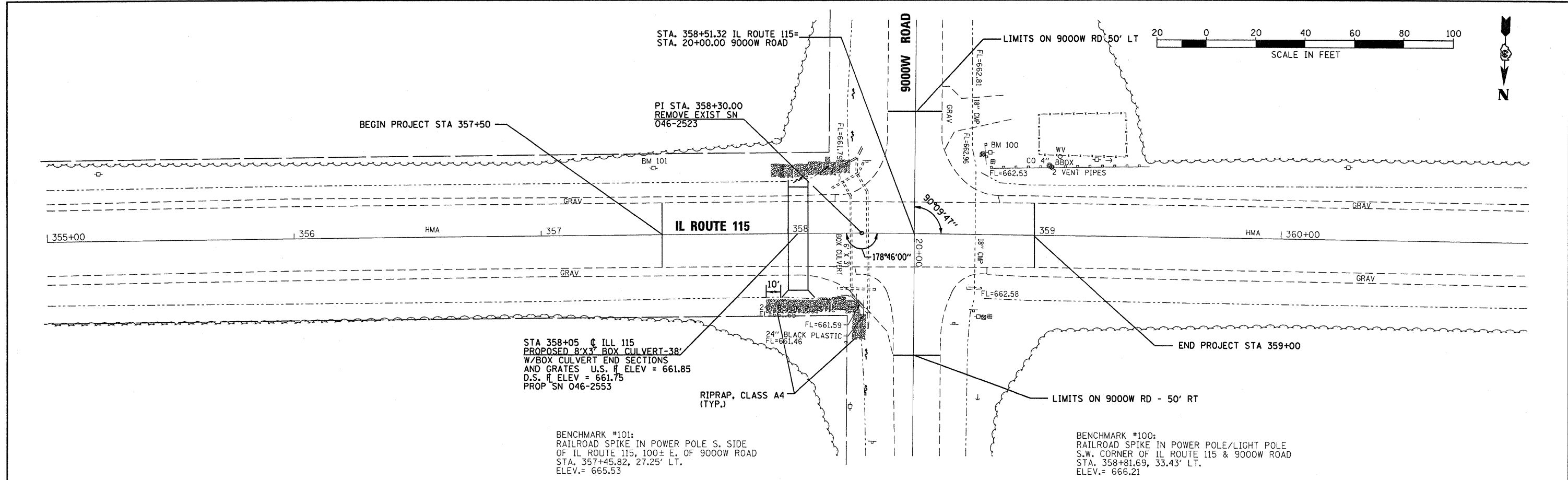
| HMA SHOULDER 8"* | | |
|----------------------|-------------|------------------|
| LOCATION | HMA SHLD 8" | EARTH EXCAVATION |
| STATION | SQ YD | CU YD |
| 357+90 TO 358+18(LT) | 7 | 2 |
| 357+90 TO 358+27(RT) | 9 | 2 |
| TOTAL | 16 | 4 |

* THIS QUANTITY TO BE PLACED PRIOR TO THE CONSTRUCTION OF BOX CULVERT USE TC&P STD 701306 FOR PLACEMENT

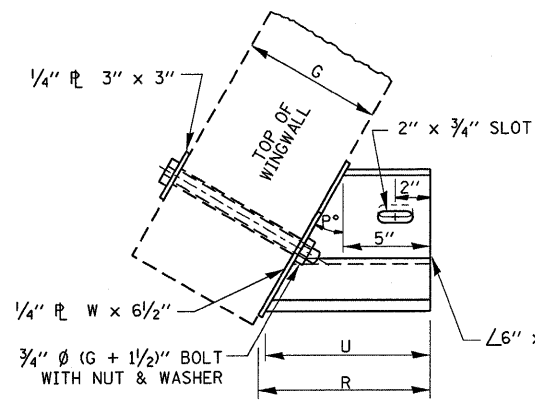
| | | | | | | | | | | |
|--|----------------------|---------------------|---------------------------|---|--------------------------------|-------------|----------|--------|--------------|-----------|
| FILE NAME = | USER NAME = braboygo | DESIGNED - | REVISED - | STATE OF ILLINOIS DEPARTMENT OF TRANSPORTATION | SCHEDULES OF QUANTITIES | F.A.S. RTE. | SECTION | COUNTY | TOTAL SHEETS | SHEET NO. |
| c:\pwork\pwork\braboygo\d0155828\036986-SHT-PLNPRF-355-361.dgn | DRAWN - | REVISED - | 1323 | | | (102) | KANKAKEE | 11 | 4 | |
| PLOT SCALE = 20.0000' / IN. | CHECKED - | REVISED - | CONTRACT NO. 66986 | | | | | | | |
| PLOT DATE = Dec 05, 2009 - 04:00:26 PM | DATE - | REVISED - | ILLINOIS FED. AID PROJECT | | | | | | | |
| SCALE: | | SHEET NO. OF SHEETS | | STA. TO STA. | | | | | | |

PLAN
 SURVEYED BY CHAMLIN & ASSOCIATES 07/09
 PLOTTED BY LAG 08/09
 CHECKED BY JKC 08/09
 RT. OF WAY CHECKED BY JKC 08/09
 DATE FILE NAME D:\66986-TOPO\JOBK 08/09

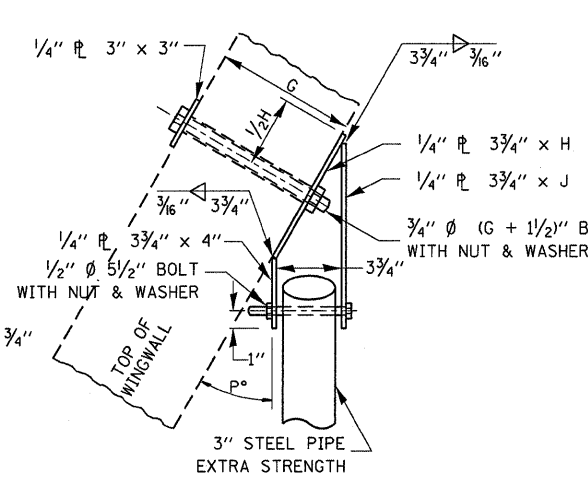
PROFILE
 SURVEYED BY CHAMLIN & ASSOCIATES 07/09
 PLOTTED BY LAG 08/09
 CHECKED BY JKC 08/09
 STRUCTURE NOTATIONS CHFD 08/09
 DATE FILE NAME D:\66986-TOPO\JOBK 08/09



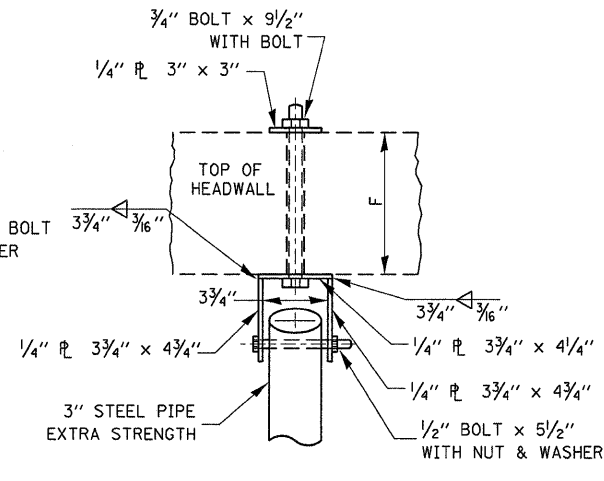
| | | | | | | | | | | | | |
|---|-----------------|----------------|-----------|---|---|---------------------|----------------------------|--------------------|---------------|-----------------|-----------------|-------------|
| FILE NAME = D:\66986-SHT-PLNPRF-355-361.DGN | USER NAME = ... | DESIGNED - - | REVISED - | STATE OF ILLINOIS DEPARTMENT OF TRANSPORTATION | PLAN & PROFILE - IL ROUTE 115 | | | F.A.S. RTE. 1323 | SECTION (102) | COUNTY KANKAKEE | TOTAL SHEETS 11 | SHEET NO. 5 |
| PLOT SCALE = 1"=20' | CHECKED - JKC | DRAWN - LAG/NV | REVISED - | | SCALE: 1"=20' | SHEET NO. OF SHEETS | STA. 355+00 TO STA. 361+00 | CONTRACT NO. 66986 | | | | |
| PLOT DATE = 08/09 | DATE - 08/09 | CHECKED - JKC | REVISED - | | FED. ROAD DIST. NO. ILLINOIS FED. AID PROJECT | | | | | | | |
| | | DATE - 08/09 | REVISED - | | | | | | | | | |



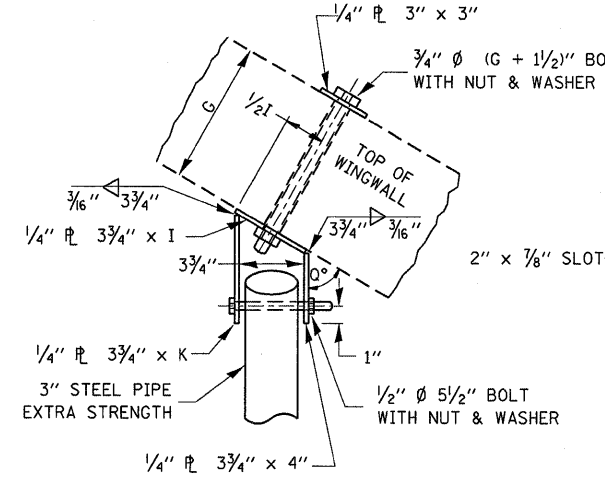
PLAN
END BRACKET ASSEMBLY - LEFT



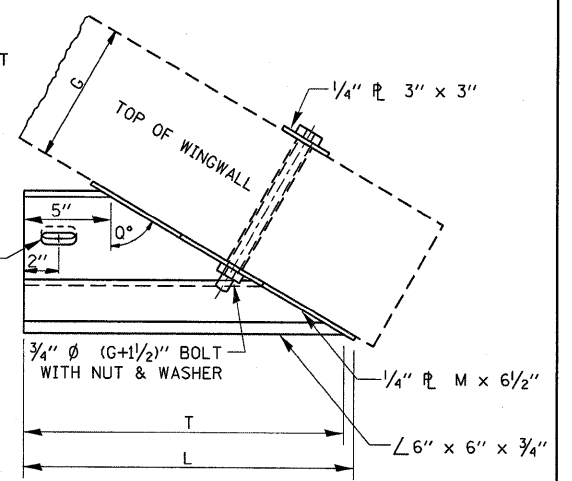
PLAN
WINGWALL BRACKET ASSEMBLY - LEFT



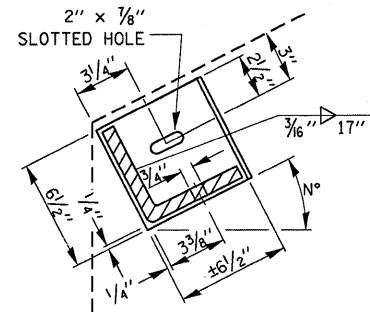
PLAN
HEADWALL BRACKET ASSEMBLY



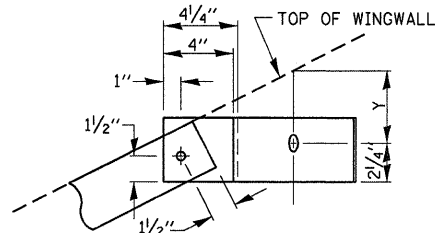
PLAN
WINGWALL BRACKET ASSEMBLY - RIGHT



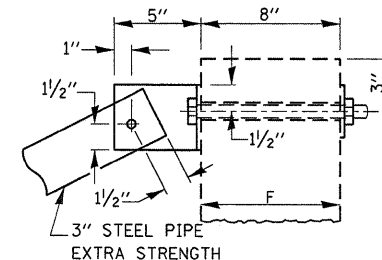
PLAN
END BRACKET ASSEMBLY - RIGHT



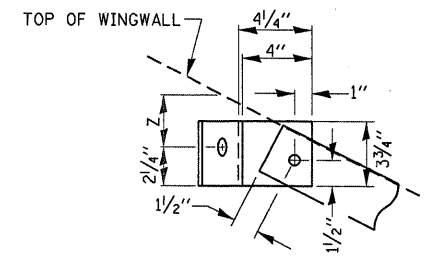
SECTION THRU
DETAIL A



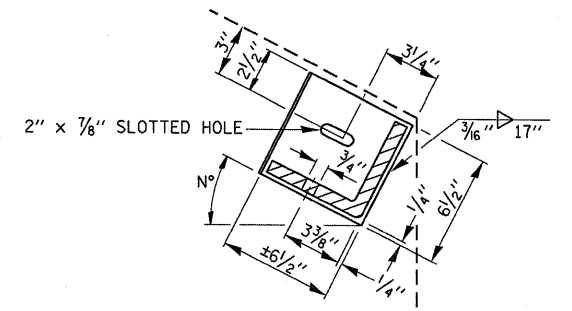
SECTION THRU
DETAIL B



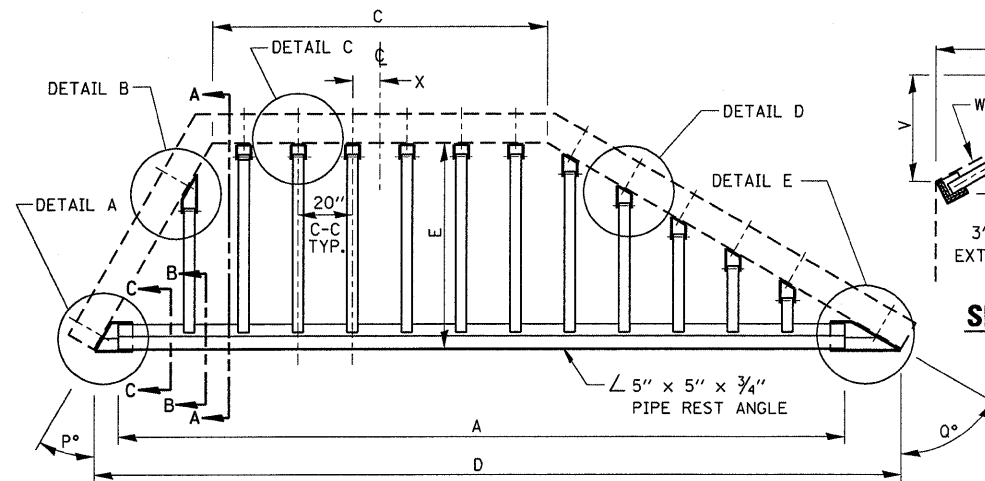
SECTION THRU
DETAIL C



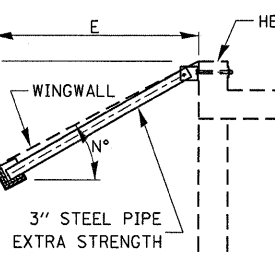
SECTION THRU
DETAIL D



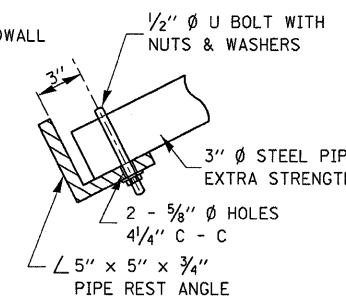
SECTION THRU
DETAIL E



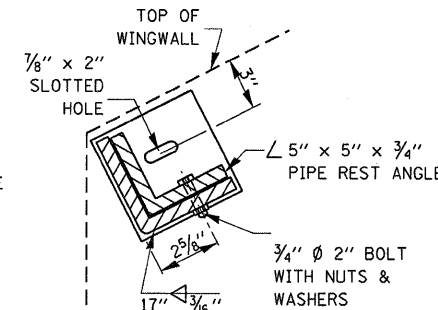
PLAN VIEW



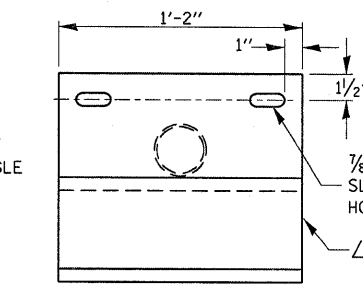
SECTION A-A



SECTION B-B

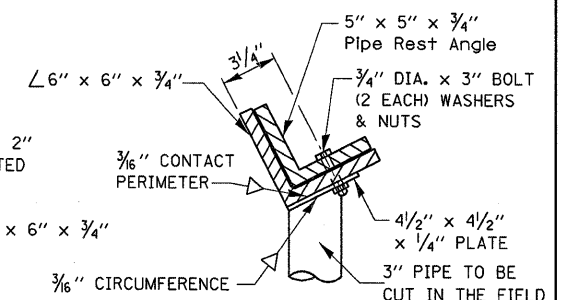


SECTION C-C

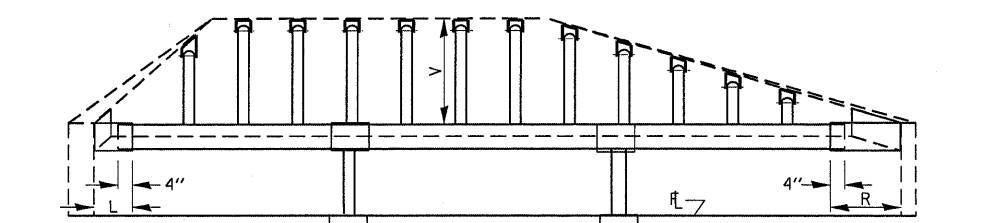


PLAN VIEW OF SUPPORT

3" STEEL PIPE, EXTRA STRENGTH
x 2' LONG TO BE
CUT TO FIT IN THE FIELD



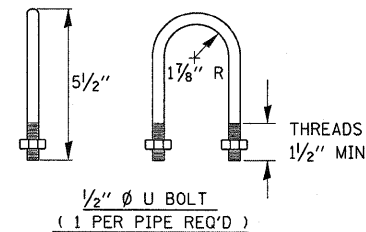
END VIEW OF SUPPORT



ELEVATION VIEW

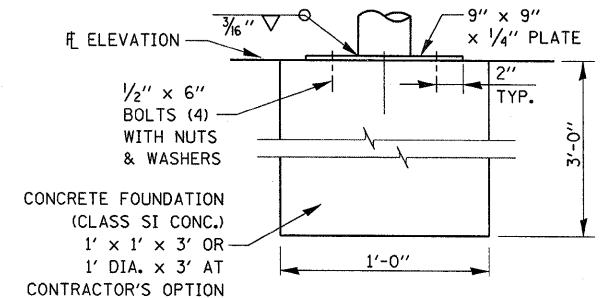
GENERAL NOTES

BOLTS AND NUTS SHALL CONFORM TO ASTM A 307.
ALL BOLTS SHALL HAVE WASHERS AT EACH END.
HOLES SHALL BE 1/16" OVERSIZE UNLESS OTHERWISE NOTED EXCEPT IN CONCRETE WHICH SHALL BE 1/8" OVERSIZE.
ANGLES AND STEEL PLATES SHALL CONFORM TO AASHTO M183.
STEEL PIPES SHALL CONFORM TO ASTM A53 GRADE B OR ASTM A 501.
STEEL PIPES, ANGLES AND PLATES SHALL BE HOT DIPPED GALVANIZED CONFORMING TO THE REQUIREMENTS OF AASHTO M111.
BOLTS, NUTS AND WASHERS SHALL BE HOT DIPPED GALVANIZED CONFORMING TO THE REQUIREMENTS OF AASHTO M232.
THE APPROXIMATE WEIGHT OF STEEL GIVEN IN TABLES INCLUDES PLATES, ANGLES, AND PIPES. BOLTS, NUTS AND WASHERS ARE NOT INCLUDED.
ALL DIMENSIONS ARE TO BE VERIFIED IN THE FIELD.
CUTTING OF THE EXTRA STRENGTH PIPE AND ANGLES TO THE EXACT LENGTHS AND DRILLING HOLES IS TO BE DONE IN THE FIELD.
THIS ITEM PAID FOR AS GRATING FOR CONCRETE HEADWALL



1/2" Ø U BOLT
(1 PER PIPE REQ'D)

| DETERMINING NEED OF CENTER SUPPORTS | | |
|---|-----------------------------|----------------|
| TIP TO TIP OF WINGWALLS (DIMENSION "D") | NUMBER OF SUPPORTS REQUIRED | LOCATION |
| 0'-0" TO 12'-6" | 0 | -- |
| 12'-6" TO 18'-0" | 1 | CENTER OF SPAN |
| 18'-0" TO 24'-0" | 2 | 1/3 OF SPAN |
| 24'-0" TO 30'-0" | 3 | 1/4 OF SPAN |



CENTER SUPPORT FOUNDATION

| | | | |
|---|--|------------|-----------|
| FILE NAME = | USER NAME = braboypa | DESIGNED - | REVISED - |
| c:\pwork\pwork\dot1\braboypa\d0155828\036986-9HT-PLNPRF-355-361.dgn | | DRAWN - | REVISED - |
| | PLOT SCALE = 20.0000' / IN. | CHECKED - | REVISED - |
| | PLOT DATE = Dec 05, 2009 - 04:00:43 PM | DATE - | REVISED - |

STATE OF ILLINOIS
DEPARTMENT OF TRANSPORTATION

BOX CULVERT GRATE DETAIL

SCALE: SHEET NO. OF SHEETS STA. TO STA.

| | | | | |
|--------------------|---------|----------|---------------------------|-----------|
| F.A.S. RTE. | SECTION | COUNTY | TOTAL SHEETS | SHEET NO. |
| 1323 | (102) | KANKAKEE | 11 | 6 |
| CONTRACT NO. 66986 | | | ILLINOIS FED. AID PROJECT | |

WATERWAY INFORMATION TABLE

Route: FAS 1323 (IL 115) S.N. (Exist.): 046-2523
 Section: (102) S.N. (Prop.):
 County: Kankakee Waterway: Branch of East Branch of Horse Creek
 Prepared by: IDOT (SAF) Date: 11/2/2009

| Drainage Area = | 0.42 Sq Mi | Exist. Low Grade El. = 666.7 @ Sta. 4+00 | Prop. Low Grade El. = 666.7 @ Sta. 4+00 | | | | | | |
|-----------------|-----------------|--|---|--------|-------------|------------|-------|---------------|-------|
| FLOOD | FREQUENCY (yr.) | Q (cfs) | OPENING - sq. ft. | | NAT. H.W.E. | HEAD - ft. | | HEADWATER EL. | |
| | | | Exist.* | Prop.* | | Exist. | Prop. | Exist. | Prop. |
| | 10 | 74 | 18 | 24 | 664.9 | 0.8 | 0.5 | 665.7 | 665.5 |
| Design | 50 | 111 | 18 | 24 | 665.1 | 1.9 | 1.7 | 667.0 | 666.8 |
| Base | 100 | 125 | 18 | 24 | 665.2 | 1.9 | 1.7 | 667.1 | 666.9 |
| Overtopping | N/A | N/A | N/A | N/A | N/A | N/A | N/A | N/A | N/A |
| Max. Calc. | 500 | 159 | 18 | 24 | 665.4 | 1.9 | 1.8 | 667.3 | 667.2 |

10-year velocity exist 4.1 fps 10-year velocity prop 3.1 fps

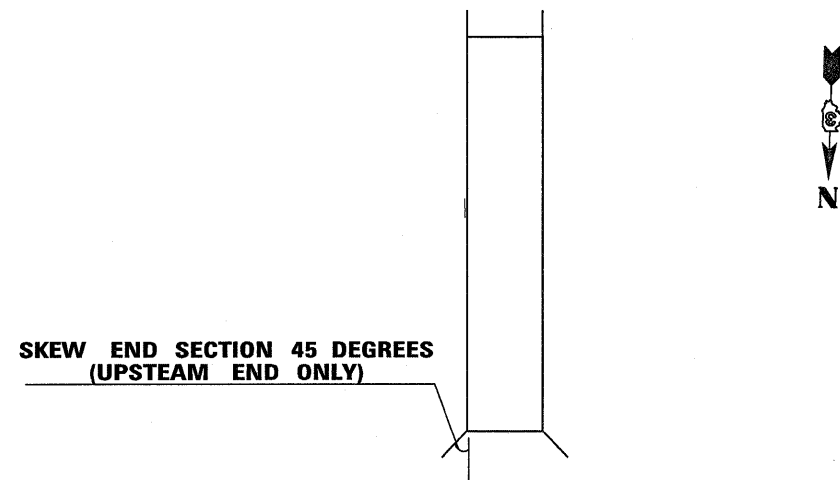
Scope of Work: Total Replacement (Constricted Table)

EXISTING STRUCTURE

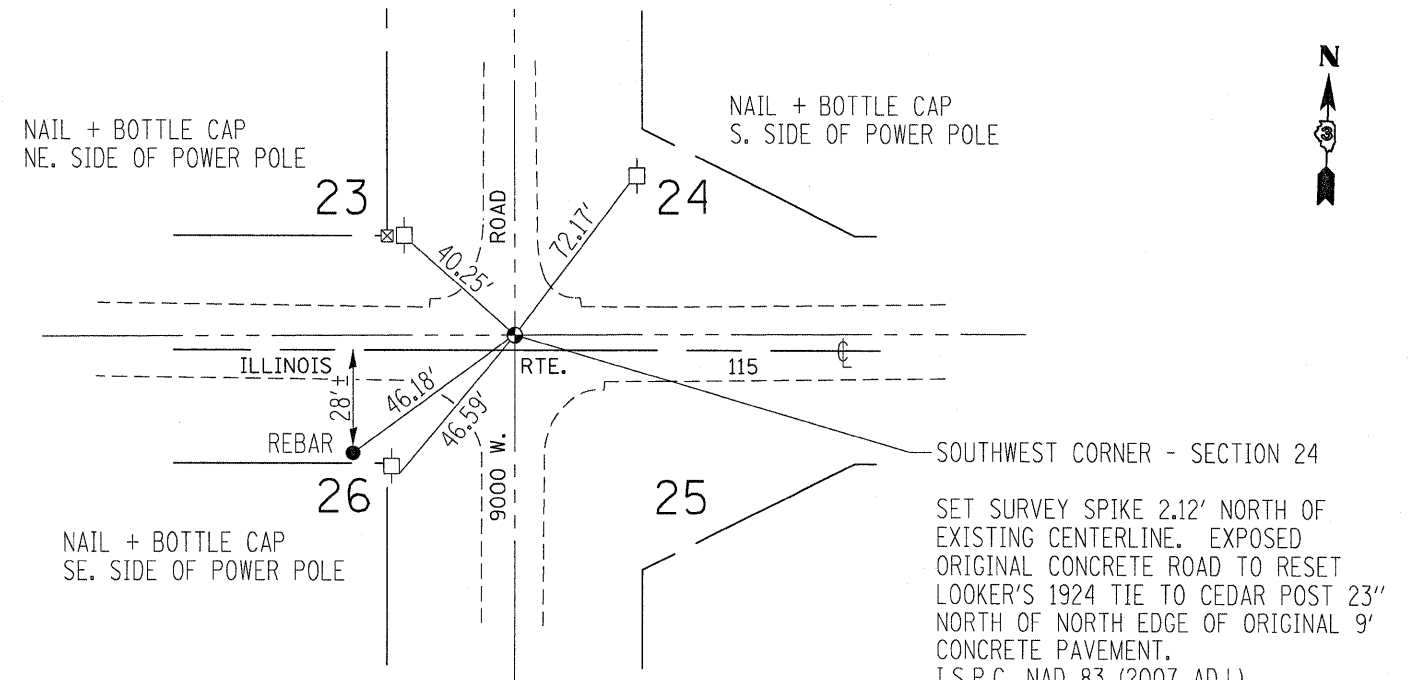
Type: Concrete Box Culvert
 Size: 6' x 3'
 Length: 57' 6" along centerline
 U/S Invert El.: 661.6
 D/S Invert El.: 661.8
 Skew: 6 degrees

PROPOSED STRUCTURE

Type: Concrete Box Culvert
 Size: 8' x 3'
 Length: 36' along centerline
 U/S Invert El.: 661.85
 D/S Invert El.: 661.75
 Skew: 0 degrees



PRECAST BOX CULVERT END SECTION DETAIL



NOTE: A LICENSED SURVEYOR MUST SET AND REGISTER THIS SECTION CORNER WITH THE COUNTY-I INCLUDED IN THE COST OF PERM SURV MARKER

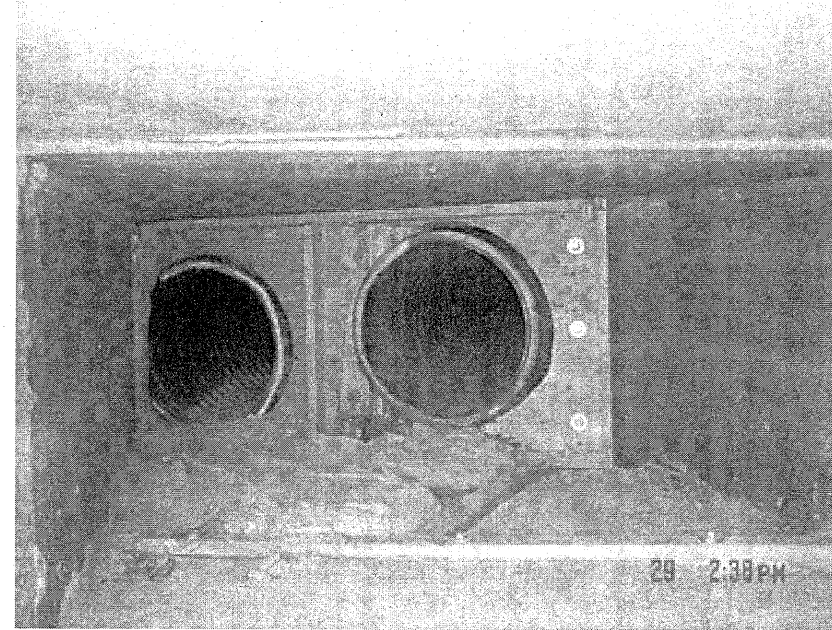
SOUTHWEST CORNER - SECTION 24
 SET SURVEY SPIKE 2.12' NORTH OF EXISTING CENTERLINE. EXPOSED ORIGINAL CONCRETE ROAD TO RESET LOOKER'S 1924 TIE TO CEDAR POST 23' NORTH OF NORTH EDGE OF ORIGINAL 9' CONCRETE PAVEMENT.
 I.S.P.C. NAD 83 (2007 ADJ.)
 N. 1,599,564.05
 E. 1,065,890.36

| | | | |
|--|----------------------|------------|-----------|
| FILE NAME = | USER NAME = braboygo | DESIGNED - | REVISED - |
| c:\pwork\pwork\braboygo\d0155828\036986-SHT-PLNPRF-355-361.dgn | | DRAWN - | REVISED - |
| | | CHECKED - | REVISED - |
| | | DATE - | REVISED - |

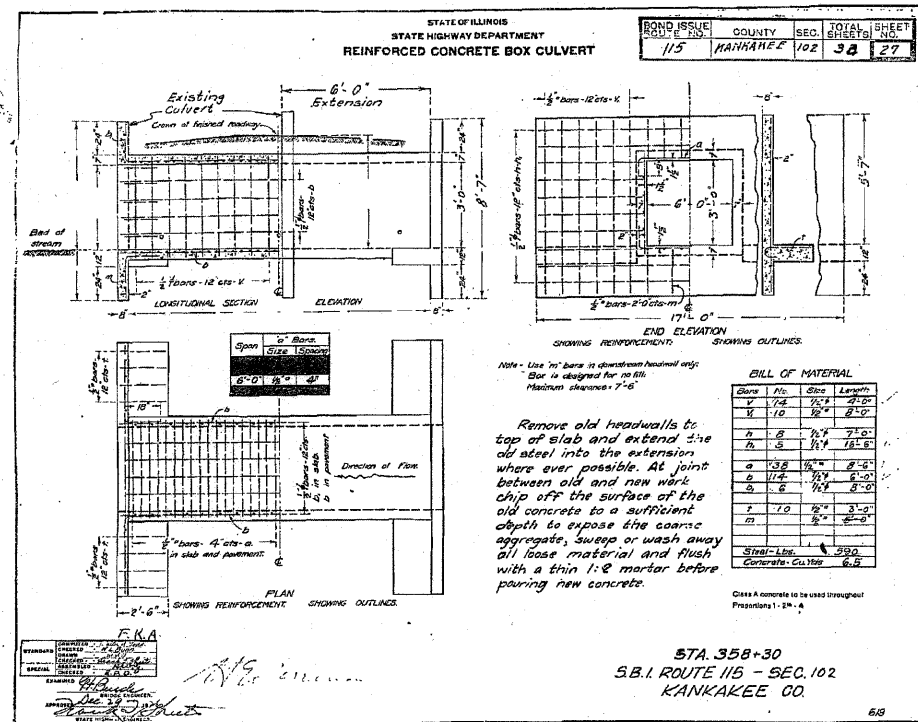
**STATE OF ILLINOIS
 DEPARTMENT OF TRANSPORTATION**

| | | | |
|-----------------------------|-----------|-----------|--------------|
| GENERAL DETAIL SHEET | | | |
| SCALE: | SHEET NO. | OF SHEETS | STA. TO STA. |

| | | | | |
|---------------------------|---------------|-----------------|-----------------|-------------|
| F.A.S. RTE. 1323 | SECTION (102) | COUNTY KANKAKEE | TOTAL SHEETS 11 | SHEET NO. 7 |
| CONTRACT NO. 66986 | | | | |
| ILLINOIS FED. AID PROJECT | | | | |



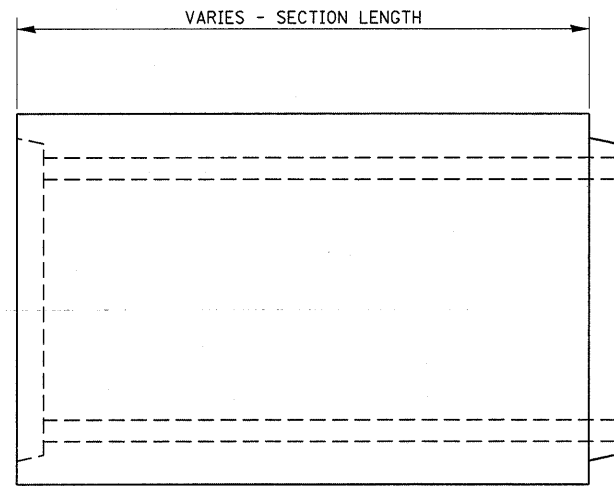
STRUCTURE AS MODIFIED IN 2009



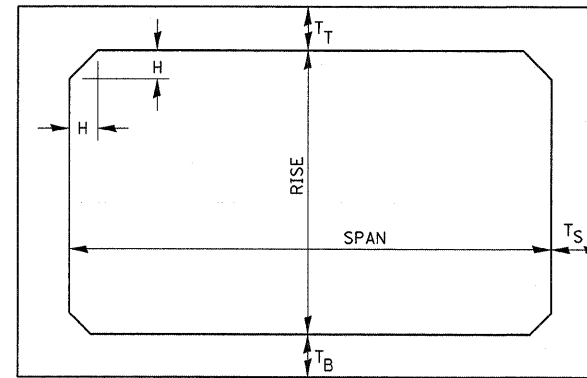
ORIGINAL STRUCTURE CONSTRUCTED IN 01923 AND WIDENED IN 1928

FOR INFORMATION ONLY

| | | | | | | | | | | | |
|--|-----------------------------|------------|-----------|-------------------------------|---------------------|---------------------------|---------|----------|--------------|-----------|--|
| FILE NAME = | USER NAME = braboypc | DESIGNED - | REVISED - | ORIGINAL CULVERT PLANS | | F.A.S. RTE. | SECTION | COUNTY | TOTAL SHEETS | SHEET NO. | |
| ci:\pw\work\PIWIDOT\BRABOYPC\0155828\036986-SHT-PLNPRF-355-361.dgn | 6986-SHT-PLNPRF-355-361.dgn | DRAWN - | REVISED - | | | 1323 | (102) | KANKAKEE | 11 | 8 | |
| PLOT SCALE = 40.0000' / IN. | | CHECKED - | REVISED - | | | CONTRACT NO. 66986 | | | | | |
| PLOT DATE = Dec 07, 2009 - 08:31:15 AM | | DATE - | REVISED - | | | ILLINOIS FED. AID PROJECT | | | | | |
| | | | | SCALE: | SHEET NO. OF SHEETS | STA. TO STA. | | | | | |



ELEVATION



NOTE: THE HAUNCH DIMENSION H, IS EQUAL TO THE WALL THICKNESS T_S.

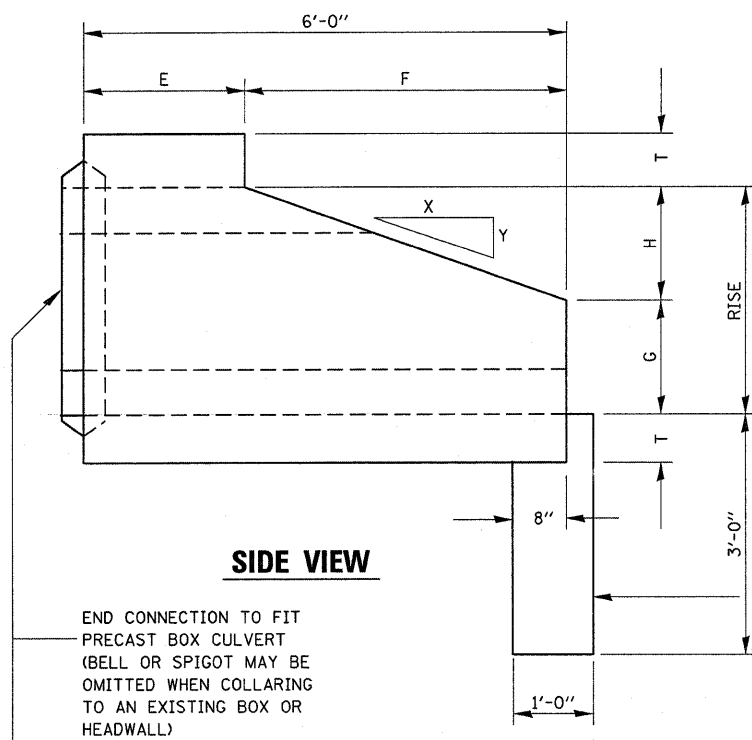
TYPICAL BOX SECTION

| SPAN, FEET | T _T , INCHES | | T _B , INCHES | | T _S , INCHES | |
|---------------|-------------------------|-------|-------------------------|-------|-------------------------|-------|
| | M 259 | M 273 | M 259 | M 273 | M 259 | M 273 |
| 3 | 4 | 7 | 4 | 6 | 4 | 4 |
| 4 | 5 | 7½ | 5 | 6 | 5 | 5 |
| 5 | 6 | 8 | 6 | 7 | 6 | 6 |
| 6 | 7 | 8 | 7 | 7 | 7 | 7 |
| 7 | 8 | 8 | 8 | 8 | 8 | 8 |
| 8 | 8 | 8 | 8 | 8 | 8 | 8 |
| 9 | 9 | 9 | 9 | 9 | 9 | 9 |
| 10 | 10 | 10 | 10 | 10 | 10 | 10 |
| 11 | 11 | 11 | 11 | 11 | 11 | 11 |
| 12 | 12 | 12 | 12 | 12 | 12 | 12 |

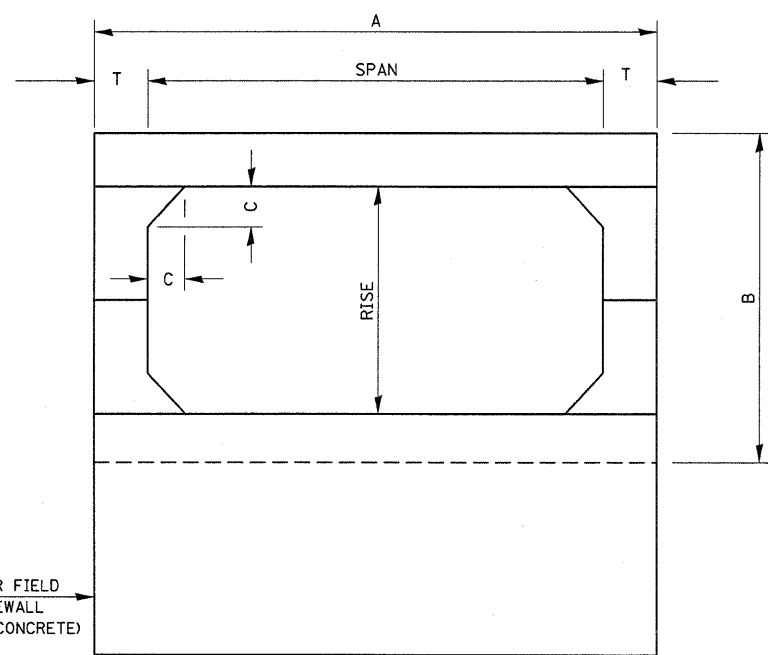
TYPICAL THICKNESSES

GENERAL NOTES:

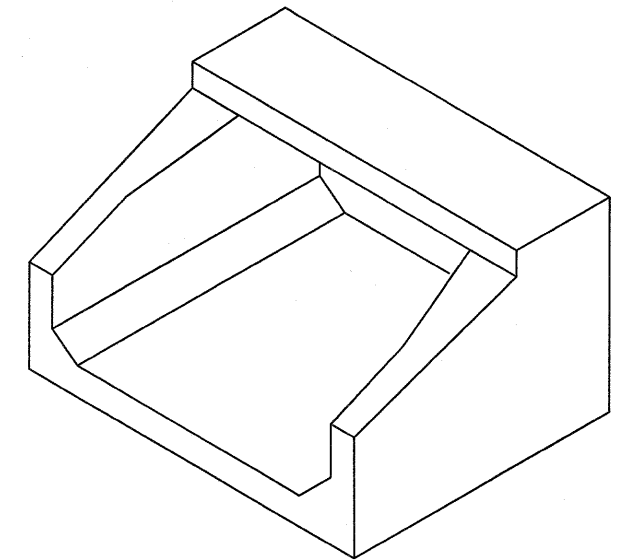
MINIMUM COVER FOR BOX
CULVERTS SHALL BE 6".



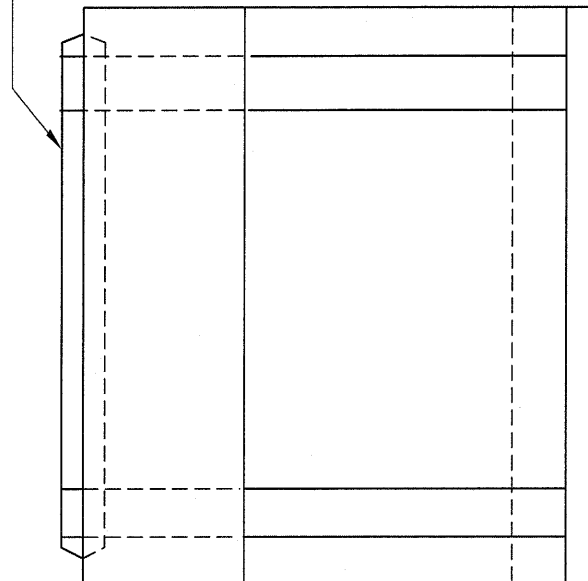
SIDE VIEW



END VIEW



ISOMETRIC VIEW



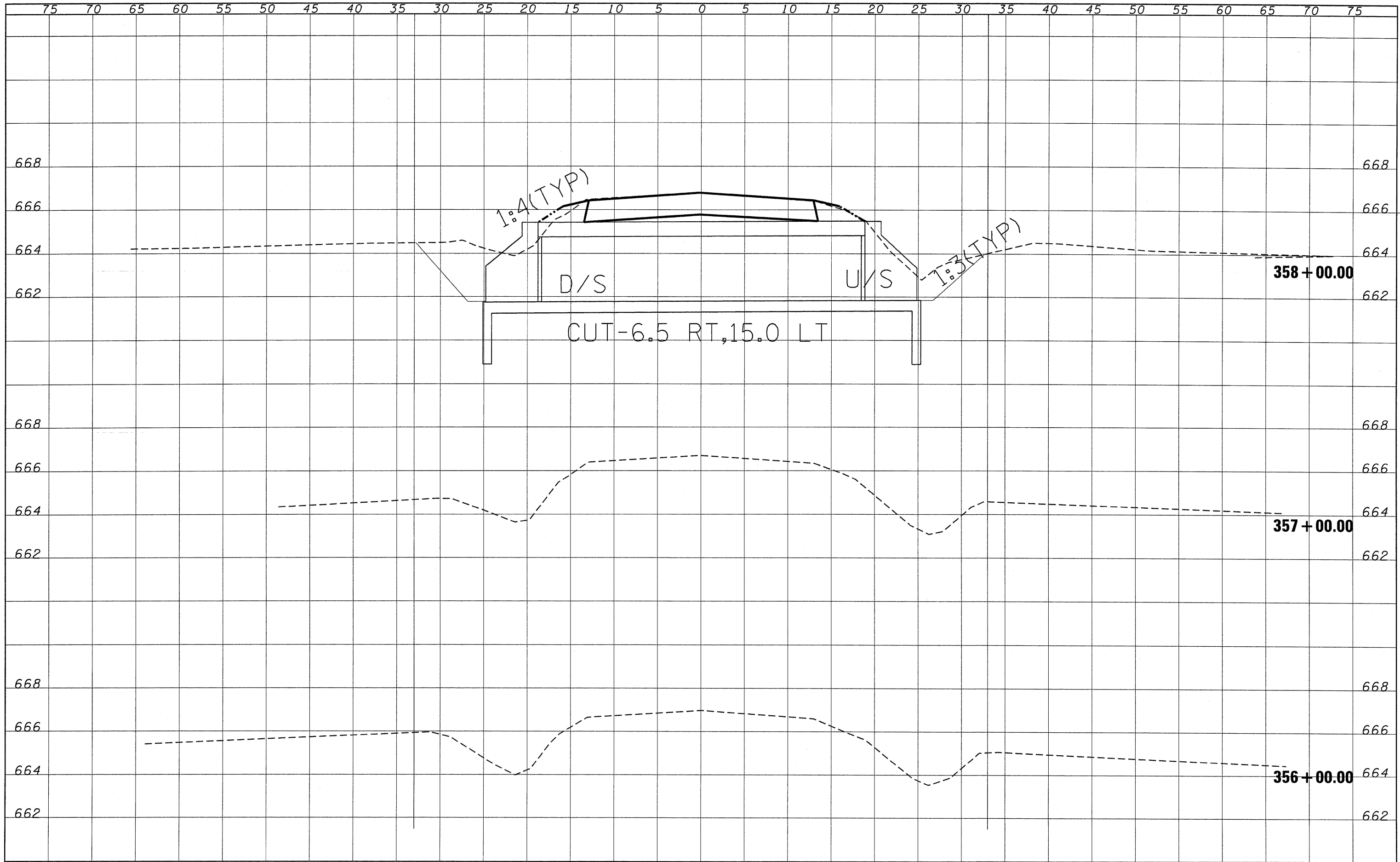
PLAN

| SPAN X RISE | T (INCHES) | A (FT.-IN.) | B (FT.-IN.) | C (INCHES) | E (FT.-IN.) | F (FT.-IN.) | G (FT.-IN.) | H (FT.-IN.) | SLOPE |
|-------------|------------|-------------|-------------|------------|-------------|-------------|-------------|-------------|-------|
| 2' X 2' | 4 | 2 - 8 | 2 - 8 | 4 | 3 - 0 | 3 - 0 | 1 - 0 | 1 - 0 | 3 : 1 |
| 3' X 2' | 4 | 3 - 8 | 2 - 8 | 4 | 3 - 0 | 3 - 0 | 1 - 0 | 1 - 0 | 3 : 1 |
| 3' X 3' | 4 | 3 - 8 | 3 - 8 | 4 | 2 - 0 | 4 - 0 | 1 - 8 | 1 - 4 | 3 : 1 |
| 4' X 2' | 5 | 4 - 10 | 2 - 10 | 5 | 3 - 0 | 3 - 0 | 1 - 0 | 1 - 0 | 3 : 1 |
| 4' X 3' | 5 | 4 - 10 | 3 - 10 | 5 | 2 - 0 | 4 - 0 | 1 - 8 | 1 - 4 | 3 : 1 |
| 4' X 4' | 5 | 4 - 10 | 4 - 10 | 5 | 2 - 0 | 4 - 0 | 2 - 0 | 2 - 0 | 2 : 1 |
| 5' X 2' | 6 | 6 - 0 | 3 - 0 | 6 | 3 - 0 | 3 - 0 | 1 - 0 | 1 - 0 | 3 : 1 |
| 5' X 3' | 6 | 6 - 0 | 4 - 0 | 6 | 2 - 0 | 4 - 0 | 1 - 8 | 1 - 4 | 3 : 1 |
| 5' X 4' | 6 | 6 - 0 | 5 - 0 | 6 | 2 - 0 | 4 - 0 | 2 - 0 | 2 - 0 | 2 : 1 |
| 5' X 5' | 6 | 6 - 0 | 6 - 0 | 6 | | 4 - 0 | 3 - 0 | 2 - 0 | 2 : 1 |
| 6' X 2' | 7 | 7 - 2 | 3 - 2 | 7 | 3 - 0 | 3 - 0 | 1 - 0 | 1 - 0 | 3 : 1 |
| 6' X 3' | 7 | 7 - 2 | 4 - 2 | 7 | 2 - 0 | 4 - 0 | 1 - 8 | 1 - 4 | 3 : 1 |
| 6' X 4' | 7 | 7 - 2 | 5 - 2 | 7 | 2 - 0 | 4 - 0 | 2 - 0 | 2 - 0 | 2 : 1 |
| 6' X 5' | 7 | 7 - 2 | 6 - 2 | 7 | | 4 - 0 | 3 - 0 | 2 - 0 | 2 : 1 |
| 7' X 3' | 8 | 8 - 4 | 4 - 4 | 8 | | 4 - 0 | 1 - 8 | 1 - 4 | 3 : 1 |
| 7' X 4' | 8 | 8 - 4 | 5 - 4 | 8 | | 4 - 0 | 2 - 0 | 2 - 0 | 2 : 1 |
| 7' X 5' | 8 | 8 - 4 | 6 - 4 | 8 | | 4 - 0 | 3 - 0 | 2 - 0 | 2 : 1 |
| 8' X 3' | 8 | 9 - 4 | 4 - 4 | 8 | | 4 - 0 | 1 - 8 | 1 - 4 | 3 : 1 |
| 8' X 4' | 8 | 9 - 4 | 5 - 4 | 8 | | 4 - 0 | 2 - 0 | 2 - 0 | 2 : 1 |
| 8' X 5' | 8 | 9 - 4 | 6 - 4 | 8 | | 4 - 0 | 3 - 0 | 2 - 0 | 2 : 1 |
| 9' X 3' | 9 | 10 - 6 | 4 - 6 | 9 | | 4 - 0 | 1 - 8 | 1 - 4 | 3 : 1 |
| 9' X 4' | 9 | 10 - 6 | 5 - 6 | 9 | | 4 - 0 | 2 - 0 | 2 - 0 | 2 : 1 |
| 9' X 5' | 9 | 10 - 6 | 6 - 6 | 9 | | 4 - 0 | 3 - 0 | 2 - 0 | 2 : 1 |
| 10' X 4' | 10 | 11 - 8 | 5 - 9 | 10 | | 4 - 0 | 2 - 0 | 2 - 0 | 2 : 1 |
| 10' X 5' | 10 | 11 - 8 | 6 - 8 | 10 | | 4 - 0 | 3 - 0 | 2 - 0 | 2 : 1 |

NOTE:
THE END SECTION SHALL BE SKEWED 45 DEGREES AS SHOWN ON GENERAL DETAIL SHEET

| | |
|---------------|--|
| DATE | |
| BY | |
| SURVEYED | |
| PLOTTED | |
| TEMPLATE | |
| NOTE BOOK | |
| AREAS CHECKED | |
| NO. | |

| | |
|---------------|---------------------|
| DATE | 07/09 |
| BY | CHAMIN & ASSOCIATES |
| SURVEYED | |
| PLOTTED | |
| TEMPLATE | |
| NOTE BOOK | |
| AREAS CHECKED | |
| NO. | |



| | | | | | | | | | | | | |
|---|--------------------|------------------|-----------|---|--------------------------------|---------------------|----------------------------------|---------------------|---------------------------|--------------------|--------------------|-----------------|
| FILE NAME = 0366986-SHT-XS-IL115.DGN | USER NAME = --- | DESIGNED - | REVISED - | STATE OF ILLINOIS DEPARTMENT OF TRANSPORTATION | CROSS SECTIONS - IL 115 | | | F.A.S. RTE. 1323 | SECTION (102)I | COUNTY KANKAKEE | TOTAL SHEETS 11 | SHEET NO. 11 |
| | PLOT SCALE = 1"=5' | DRAWN - L.A.G. | REVISED - | | SCALE: 1"=5' | SHEET NO. OF SHEETS | STA. 356+00.00 TO STA. 358+00.00 | FED. ROAD DIST. NO. | ILLINOIS FED. AID PROJECT | CONTRACT NO. 66986 | | |
| | PLOT DATE = 08/09 | CHECKED - J.K.C. | REVISED - | | | | | | | | | |
| | | DATE - 08/09 | REVISED - | | | | | | | | | |