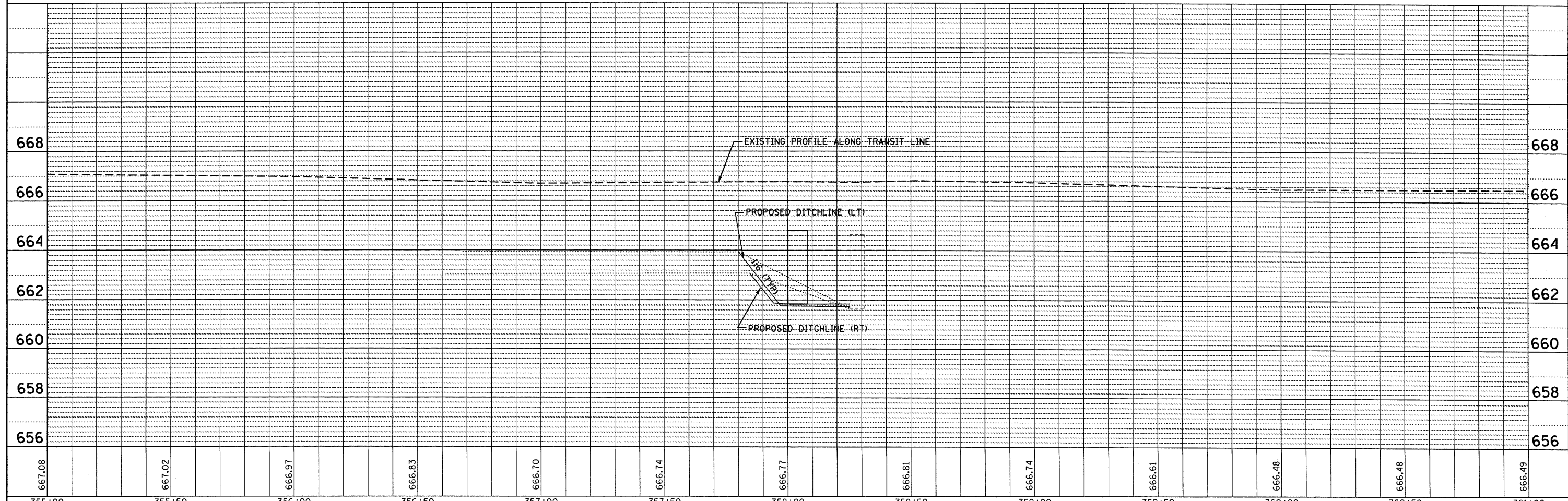
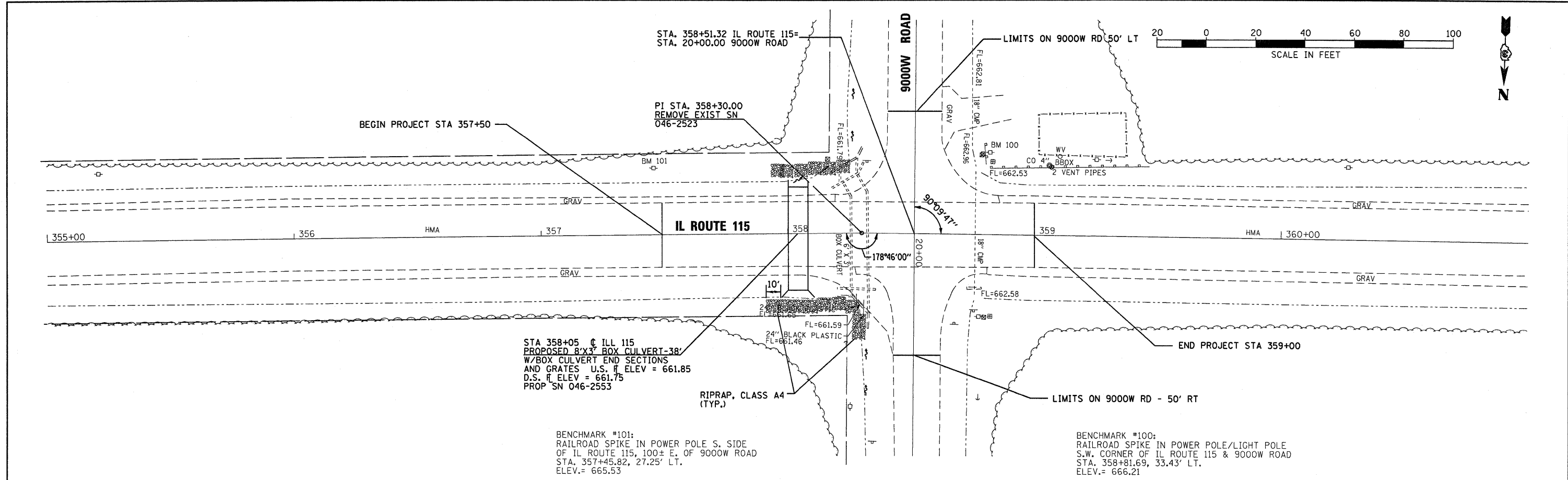


PLAN  
 SURVEYED BY CHAMLIN & ASSOCIATES 07/09  
 PLOTTED BY LAG 08/09  
 CHECKED BY JKC 08/09  
 RT. OF WAY CHECKED BY NV 08/09  
 NOTE BOOK NO. 0366985-TOPO/GRD  
 PLOTTED FILE NAME

PROFILE  
 SURVEYED BY CHAMLIN & ASSOCIATES 07/09  
 PLOTTED BY LAG 08/09  
 CHECKED BY JKC 08/09  
 RT. OF WAY CHECKED BY NV 08/09  
 STRUCTURE NOTATIONS CHVD  
 NOTE BOOK NO. 0366985-TOPO/GRD



|  |                 |                |           |   |  |                     |                            |   |                 |                    |             |  |
|--|-----------------|----------------|-----------|---|--|---------------------|----------------------------|---|-----------------|--------------------|-------------|--|
| FILE NAME = D366985-SHT-PLNPRF-355-361.DGN | USER NAME = ... | DESIGNED - -   | REVISED - | <b>STATE OF ILLINOIS<br/>DEPARTMENT OF TRANSPORTATION</b> | <b>PLAN &amp; PROFILE - IL ROUTE 115</b> |                     | F.A.S. RTE. 1323           | SECTION (102)                                 | COUNTY KANKAKEE | TOTAL SHEETS 11    | SHEET NO. 5 |  |
| PLOT SCALE = 1"=20'                        | CHECKED - JKC   | DRAWN - LAG/NV | REVISED - |   | SCALE: 1"=20'                            | SHEET NO. OF SHEETS | STA. 355+00 TO STA. 361+00 | FED. ROAD DIST. NO. ILLINOIS FED. AID PROJECT |                 | CONTRACT NO. 66986 |             |  |
| PLOT DATE = 08/09                          | DATE - 08/09    | REVISOR -      | REVISOR - |   |  |                     |                            |   |                 |                    |             |  |
|  |                 |                |           |   |  |                     |                            |   |                 |                    |             |  |