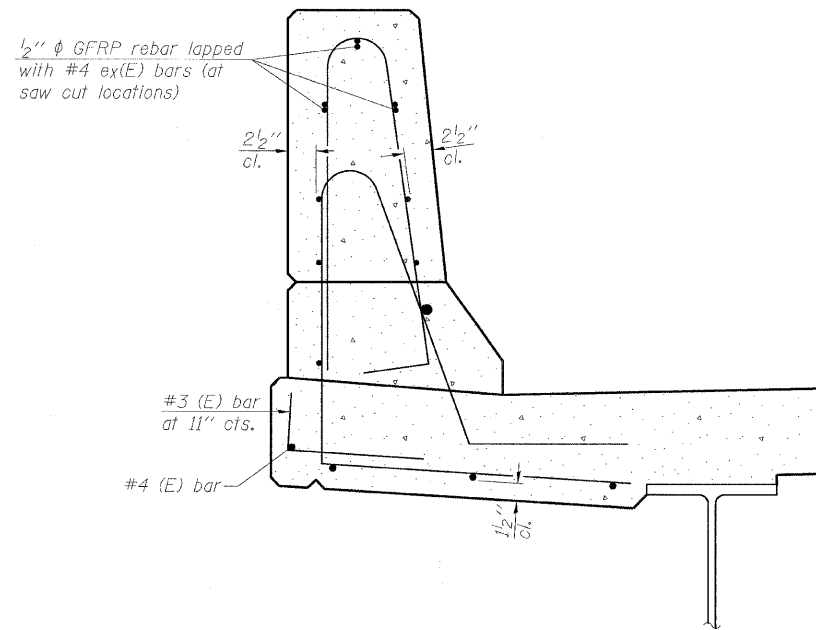
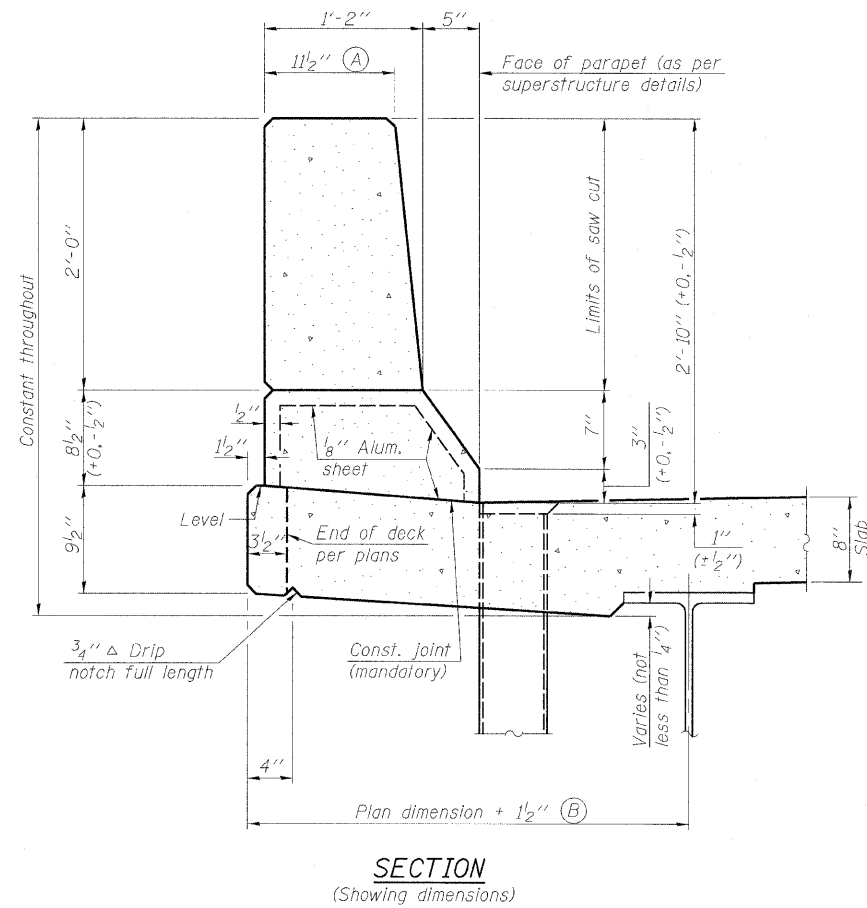


STATE OF ILLINOIS
DEPARTMENT OF TRANSPORTATION

ROUTE NO.	SECTION	COUNTY	SHEET NO.	SHEET NO.
F.A.P. 301	1-HBR-2	WINNEBAGO	57	41
FED. ROAD DIST. NO. 7	ILLINOIS	FED. AID PROJECT		

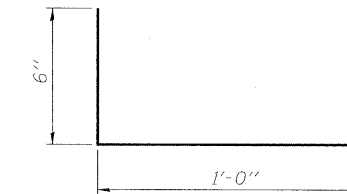
Contract #64D50



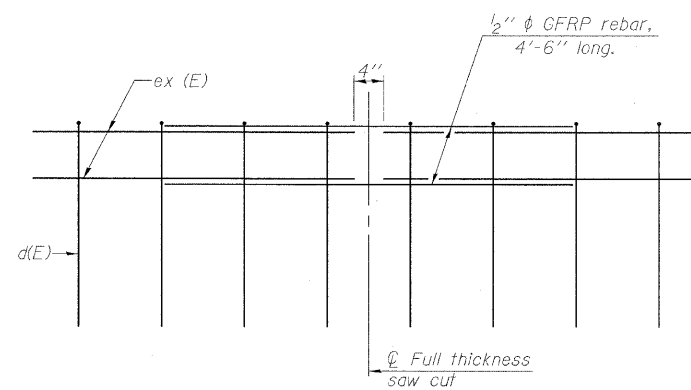
GENERAL NOTES

All dimensions shall remain the same as shown on contract plans, except dimensions A and B which are to be revised as shown to provide additional clearance. Additional concrete needed to revise dimension A and B = 0.0165 cu. yds./ft. of parapet.

Place aluminum sheet in curb portion at and near piers. Full thickness saw cut at all joint locations in lieu of cork joint filler.



#3 (E) BAR



DESIGNED	GUN / OAO
CHECKED	FCO
DRAWN	TCS / GUN
CHECKED	FCO

CONCRETE PARAPET SLIPFORMING OPTION
MERIDIAN ROAD OVER US 20
F.A.P. 301 (US 20) - SEC. 1-HBR-2
WINNEBAGO COUNTY
STATION 100+00
STRUCTURE NO. 101-0096

2:33:10 PM 11/13/2009 H:\Projects\2945\DWG\Structural\Meridian Road\Construction - Issue\1010096-64D50-022-PARAPET - SLIPFORMING.dwg