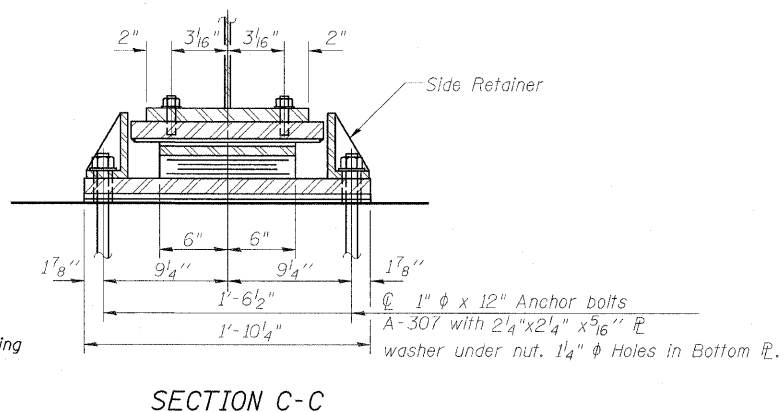
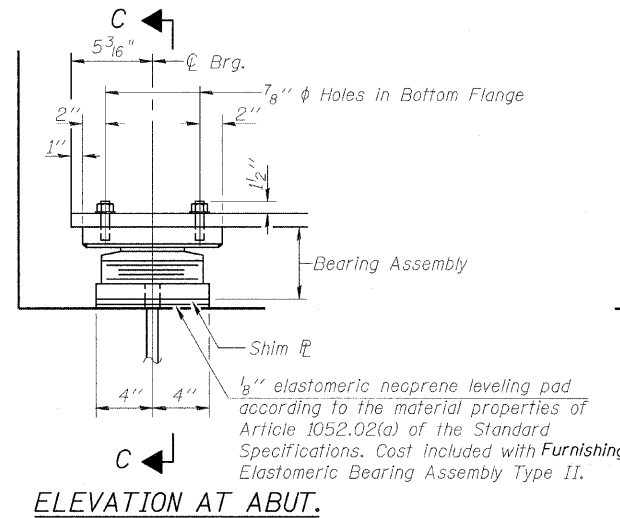


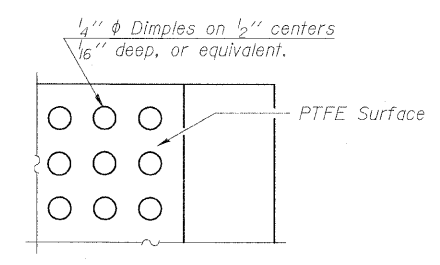
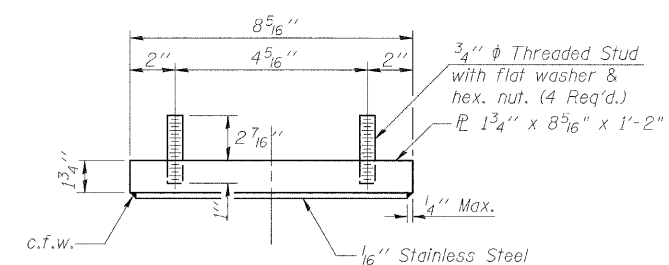
STATE OF ILLINOIS
DEPARTMENT OF TRANSPORTATION

ROUTE NO.	SECTION	COUNTY	TOTAL SHEETS	SHEET NO.	SHEET NO. 13
F.A.P. 301	1-HBR-2	WINNEBAGO	57	32	27 SHEETS
FED. ROAD DIST. NO. 7	ILLINOIS	FED. AID PROJECT-			

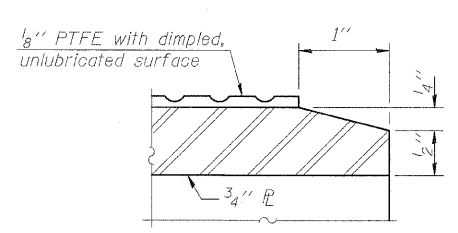
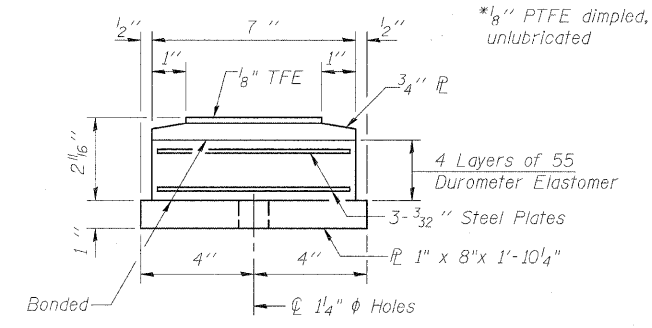
Contract #64D50



ELEVATION AT ABUT.
SECTION C-C
TYPE II ELASTOMERIC EXP. BRG.

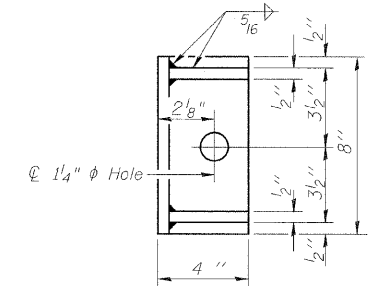
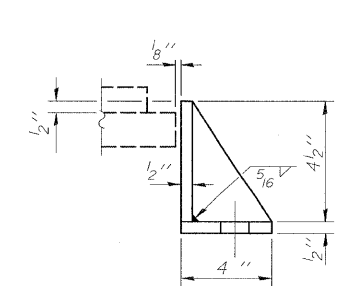


TOP BEARING ASSEMBLY
PLAN-PTFE SURFACE



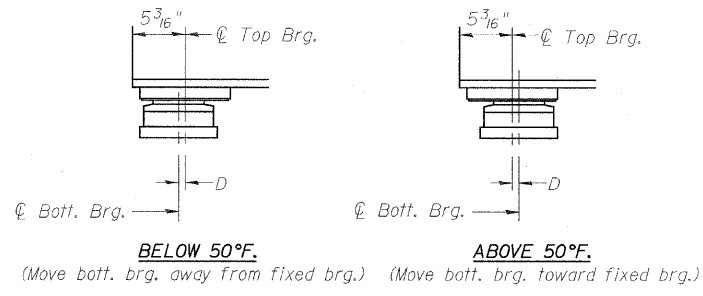
BOTTOM BEARING ASSEMBLY
SECTION THRU PTFE

NOTE: Furnishing Structural Steel and Furnishing Elastomeric Bearing Assembly Type II is not included in this contract.



SIDE RETAINER FOR ABUTMENTS

Equivalent rolled angle with stiffeners will be allowed in lieu of welded plates.



SETTING ANCHOR BOLTS AT EXP. BRG.

D = 1/8" per each 100' of expansion for every 15° temp. change from the normal temp. of 50°F.

DESIGNED	GUN / QAO
CHECKED	FCO
DRAWN	TCS / GUN
CHECKED	FCO

11-1-06

Notes:
Anchor bolts shall be ASTM F1554 all-thread (or an Engineer-approved alternate material) of the grade(s) and diameter(s) specified. ASTM A307 Grade C anchor bolts may be used in lieu of ASTM F1554 Grade 36 (Fy=36ksi). The corresponding specified grade of AASHTO M314 anchor bolts may be used in lieu of ASTM F1554.
Anchor bolts of fixed bearings may be either cast in place or installed in holes drilled after the supported member is in place.
Anchor bolts for Type II bearings shall be placed in holes drilled in the concrete through holes in the bottom bearing plate after members are in place. Side retainers shall be placed after bolts are installed.
Drilled and set anchor bolts shall be installed according to Article 521.06 of the Standard Specifications.
Side retainers and other steel members required for the bearing assembly shall be included in the cost of Furnishing Elastomeric Bearing Assembly, Type II.
The 1/8" PTFE sheet shall be bonded directly to the top steel plate with a two-component, medium viscosity epoxy resin, conforming to the requirements of the Federal Specification MMM-A-134, Type I. The bond agent shall be applied on the full area of the contact surfaces.
Bonding of 1/8" PTFE sheet during vulcanizing process will be permitted provided the process and method of adjusting assembly height is approved by the Engineer.
Two 1/8 in. adjusting shims shall be provided for each bearing in addition to all other plates or shims and placed as shown on bearing details. Cost included in Furnishing Elastomeric Bearing Assembly Type II.

BILL OF MATERIAL

Item	Unit	Total
Erecting Elastomeric Bearing Assembly Type II	Each	12
Anchor Bolts 1"	Each	24

BEARING DETAILS (ABUTMENTS)
MERIDIAN ROAD OVER US 20
F.A.P. 301 (US 20) - SEC. 1-HBR-2
WINNEBAGO COUNTY
STATION 100+00
STRUCTURE NO. 101-0096

2-23-28 PM 11/13/2009 H:\Projects\2945\DGMS\Structural\Meridian Road\Construction Issue\1010096-64D50-012-BEARDET AILS.dgn