

STATE OF ILLINOIS  
DEPARTMENT OF TRANSPORTATION

ROUTE NO. F.A.P. 301	SECTION 1-HBR-2	COUNTY WINNEBAGO	TOTAL SHEETS 57	SHEET NO. 25	SHEET NO. 6 27 SHEETS
FED. ROAD DIST. NO. 7		ILLINOIS	FED. AID PROJECT-		

Contract #64D50

1/13/2009

HA\Projects\2945\DNS\Structural\Meridian Road\Construction Issue\1010096-64D50-006-S-Appr\slab.dgn

WEST CURB LINE

Location	Station	Offset	Theoretical Grade Elevations
End S. Appr. Pav't.	98+69.87	-16.42	787.20
A	98+79.87	-16.42	787.25
B	98+89.87	-16.42	787.30
Bk. S. Abut.	98+99.87	-16.42	787.35

WEST EDGE OF PAVEMENT

Location	Station	Offset	Theoretical Grade Elevations
End S. Appr. Pav't.	98+68.53	-12.00	787.29
A	98+78.53	-12.00	787.34
B	98+88.53	-12.00	787.39
Bk. S. Abut.	98+98.53	-12.00	787.44

☉ ROADWAY & PG

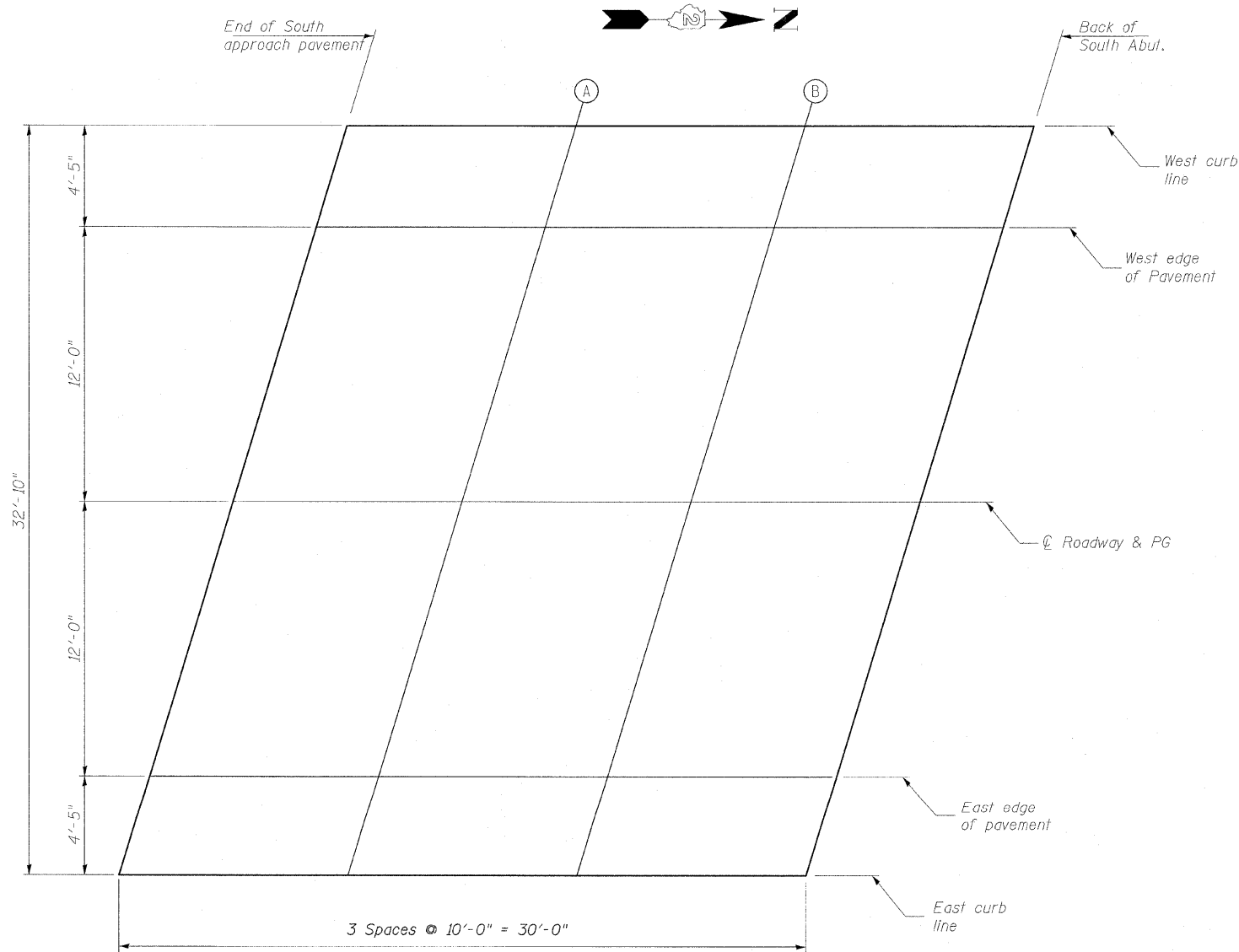
Location	Station	Offset	Theoretical Grade Elevations
End S. Appr. Pav't.	98+64.89	0.00	787.46
A	98+74.89	0.00	787.51
B	98+84.89	0.00	787.56
Bk. S. Abut.	98+94.89	0.00	787.61

EAST EDGE OF PAVEMENT

Location	Station	Offset	Theoretical Grade Elevations
End S. Appr. Pav't.	98+61.25	12.00	787.25
A	98+71.25	12.00	787.30
B	98+81.25	12.00	787.35
Bk. S. Abut.	98+91.25	12.00	787.40

EAST CURB LINE

Location	Station	Offset	Theoretical Grade Elevations
End S. Appr. Pav't.	98+59.91	16.42	787.15
A	98+69.91	16.42	787.20
B	98+79.91	16.42	787.25
Bk. S. Abut.	98+89.91	16.42	787.30



PLAN

DESIGNED	GUN / OAO
CHECKED	FCO
DRAWN	TCS / GUN
CHECKED	FCO

TOP OF SOUTH  
APPROACH SLAB ELEVATIONS  
MERIDIAN ROAD OVER US 20  
F.A.P. 301 (US 20) - SEC. 1-HBR-2  
WINNEBAGO COUNTY  
STATION 100+00  
STRUCTURE NO. 101-0096

**HOH** HARRY O. HEFFER-ASSOCIATES, INC.  
DESIGN AND CONSULTING ENGINEERS  
55 East Jackson Blvd.  
Suite 800  
Chicago, IL 60604  
312-346-8131  
PROJECT NUMBER  
**2945**