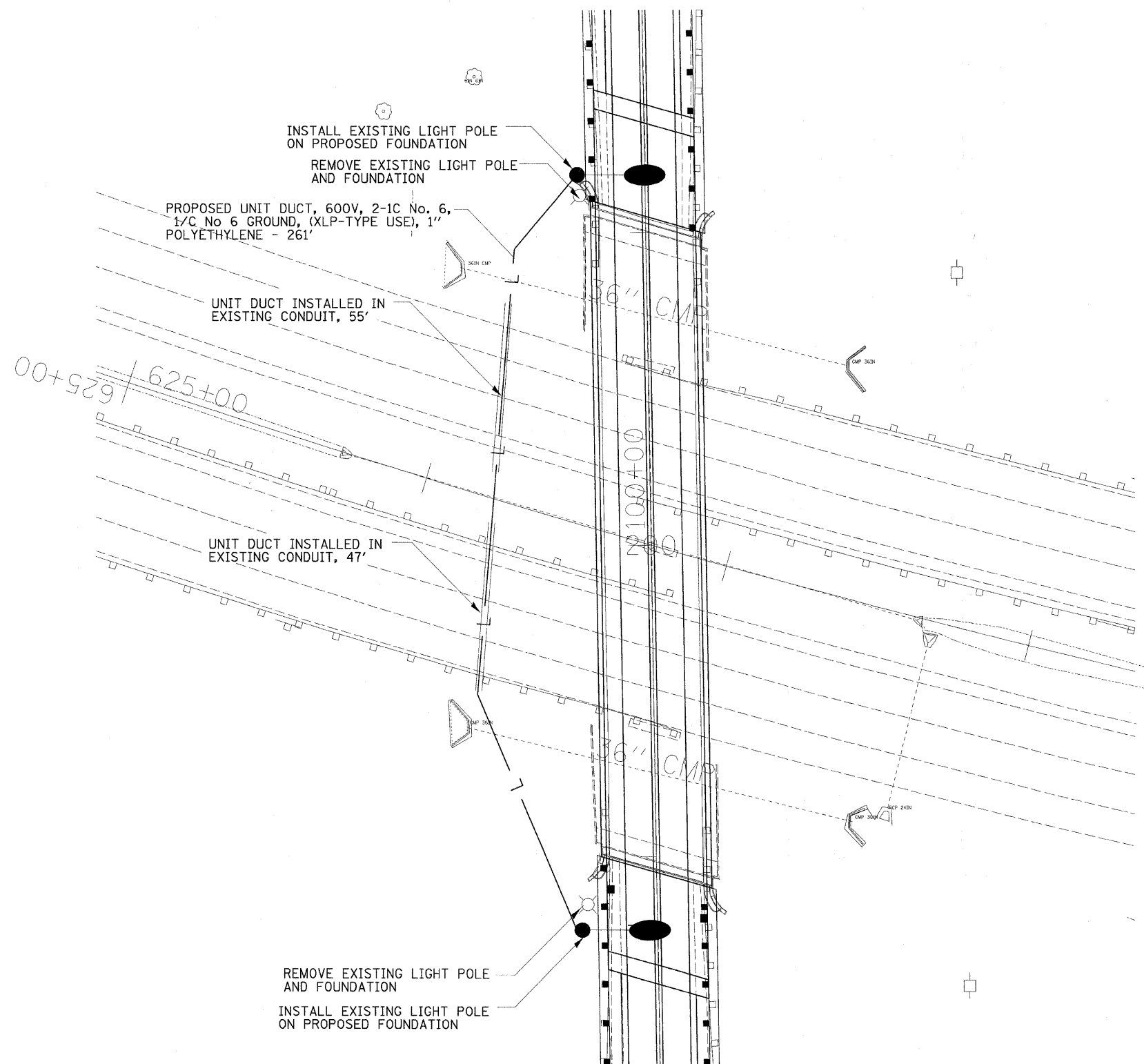


# US 20 @ MERIDIAN RD LIGHTING RELOCATION



### NOTES:

1. THE EXISTING LIGHT POLES TO BE RELOCATED ARE WEATHERING STEEL, 45 FT. M.H., TENON MOUNT WITH MULTI-MOUNT LUMINAIRE.
2. THE EXISTING UNIT DUCT AND WIRE BETWEEN THE TWO LIGHT POLE FOUNDATIONS SHALL BE REMOVED AND THE NEW UNIT DUCT SHALL BE INSTALLED USING THE EXISTING CONDUITS UNDER THE ROADWAY. THE COST OF UNIT DUCT REMOVAL SHALL BE INCLUDED UNDER "REMOVAL OF POLE FOUNDATION, METAL".
3. THE RELOCATED LIGHT POLES AND PROPOSED FOUNDATIONS SHALL BE INSTALLED 5 FEET BEHIND GUARDRAIL. AFTER UNIT DUCT IS INSTALLED, FOUNDATIONS SHALL BE FILLED WITH FINE AGGREGATE ACCORDING TO ARTICLE 836.03 A STAINLESS STEEL SCREEN SHALL BE INSTALLED TO SEAL THE OPENING BELOW THE POLE BASE FROM RODENT ENTRY.

FILE NAME = H:\Projects\2145\UGNS\09209507\209507L... HT.dgn		USER NAME = *USER*	DESIGNED -	REVISED -	<b>STATE OF ILLINOIS DEPARTMENT OF TRANSPORTATION</b>	<b>MERIDIAN ROAD LIGHTING PLAN</b>	F.A.P. RTE. 301	SECTION 1-HBR-2	COUNTY WINNEBAGO	TOTAL SHEETS 57	SHEET NO. 15	PROJECT NUMBER 2945	
PLOT SCALE = 20,000' / IN.		CHECKED -	REVISED -	SCALE:			SHEET NO. OF SHEETS	STA. TO STA.	CONTRACT NO. 64D50				
PLOT DATE = 11/13/2009		DATE = 2/02/09	REVISED -	FED. ROAD DIST. NO. ILLINOIS FED. AID PROJECT									
HOH HARRY G. HETTER-ASSOCIATES, INC. DESIGN AND CONSULTING ENGINEERS 98 East Jackson Blvd. Suite 800 Chicago, IL 60604 312-346-8121													