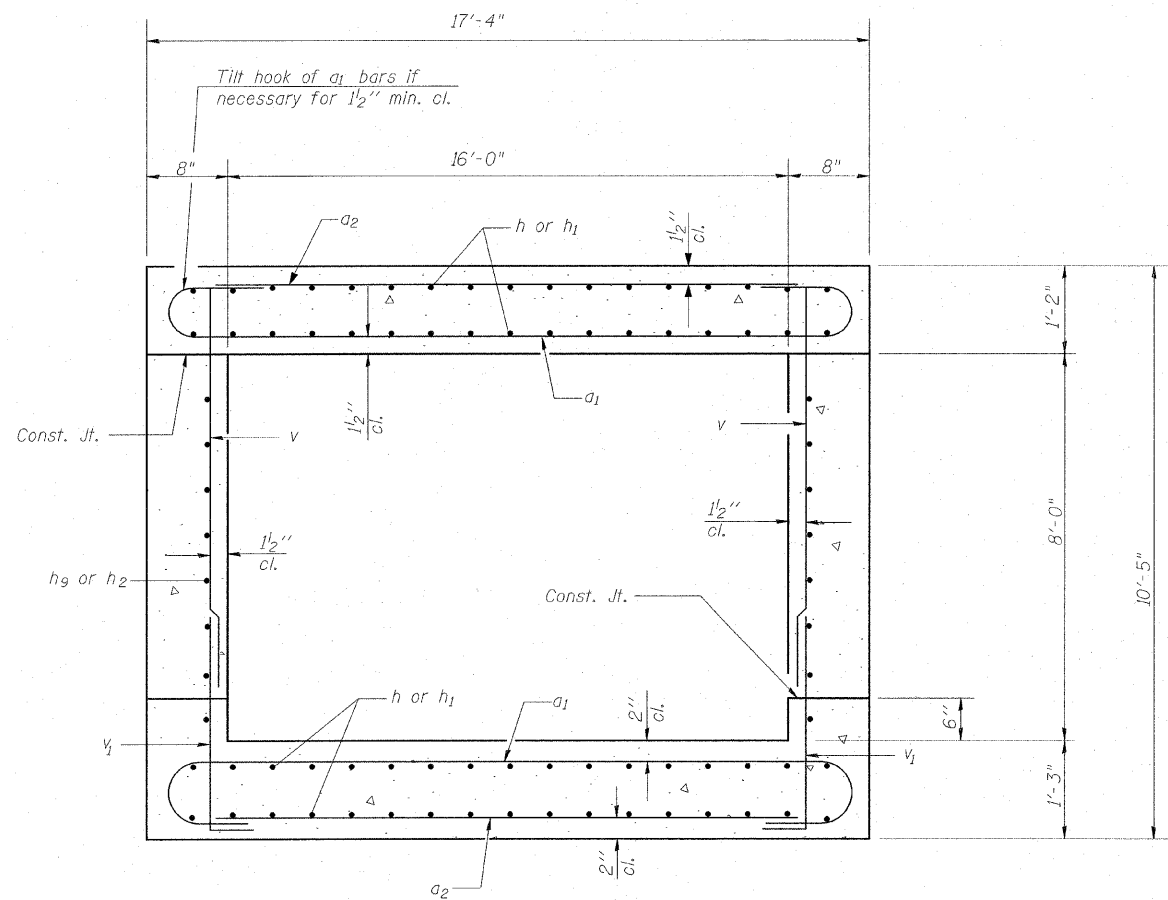
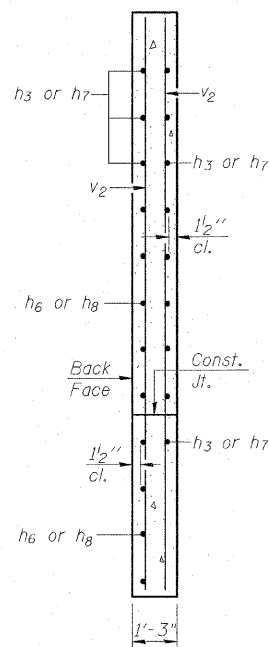


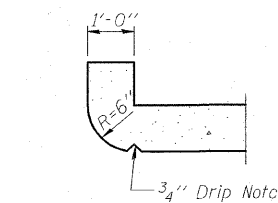
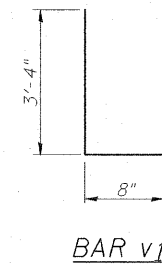
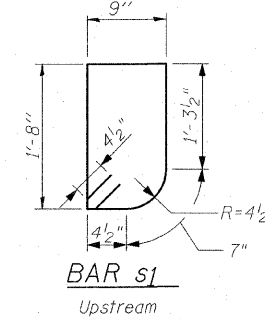
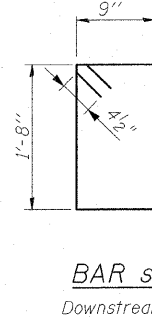
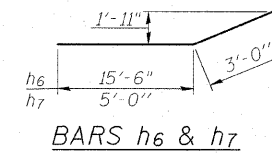
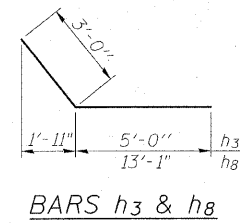
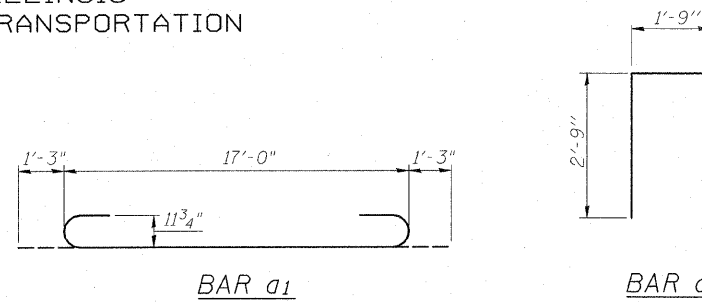
STATE OF ILLINOIS  
DEPARTMENT OF TRANSPORTATION



SECTION THRU BARREL



SECTION A-A



SECTION THRU HEADWALL  
(Up Stream End Only)

BILL OF MATERIAL

Bar	No.	Size	Length	Shape
a1	362	#9	19'-6"	U
a2	232	#5	16'-3"	—
d	34	#4	4'-6"	—
h	136	#7	20'-8"	—
h1	136	#7	26'-8"	—
h2	32	#6	20'-3"	—
h3	22	#8	8'-0"	—
h4	8	#6	17'-8"	—
h5	12	#8	18'-6"	—
h6	26	#8	17'-6"	—
h7	22	#8	8'-0"	—
h8	26	#8	15'-6"	—
h9	32	#6	26'-3"	—
h10	8	#4	4'-0"	—
v	364	#4	8'-6"	—
v1	364	#4	4'-0"	—
v2	24	#4	12'-7"	—
s	51	#4	5'-7"	□
s1	17	#4	5'-5"	□
Concrete Box Culverts			Cu. Yd.	210.7
Reinforcement Bars			Pound	50,980
Bar Splicers			Each	84

BOX PLAN & ELEVATION II  
STRUCTURE NO. 043-1076

DESIGNED MAS
CHECKED BJM
DRAWN TMF / JNH
CHECKED BRT



Wight & Company  
2500 North Frontage Road, Darien, IL 60561  
630.969.7000 630.969.7979 fax  
Design Firm Registration 184-000451

SHEET NO. 4 8 SHEETS	F.A.P. RTE. 301	SECTION 43T	COUNTY JO DAVIESS	TOTAL SHEETS 80	SHEET NO. 47
	STA. 107+58.88 TO STA. 107+76.13			CONTRACT NO. 64C68	
FED. ROAD DIST. NO.		ILLINOIS	FED. AID PROJECT		