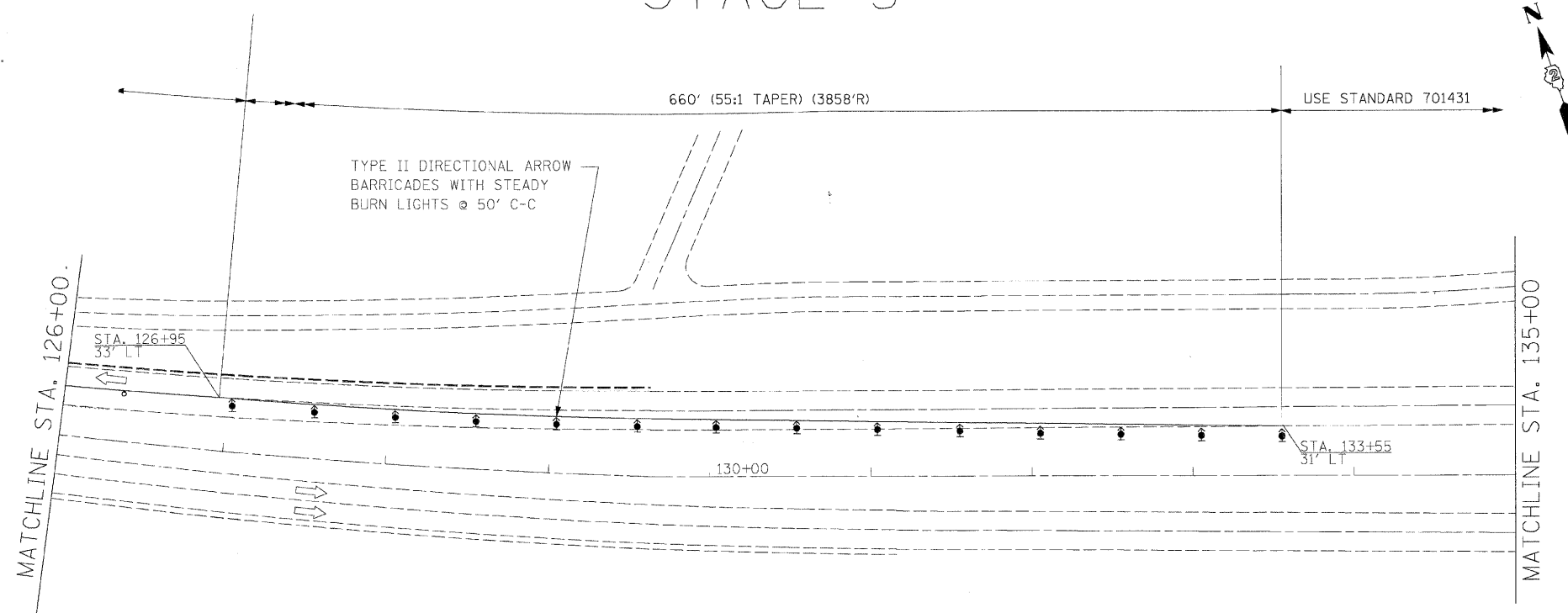


**NOTES:**

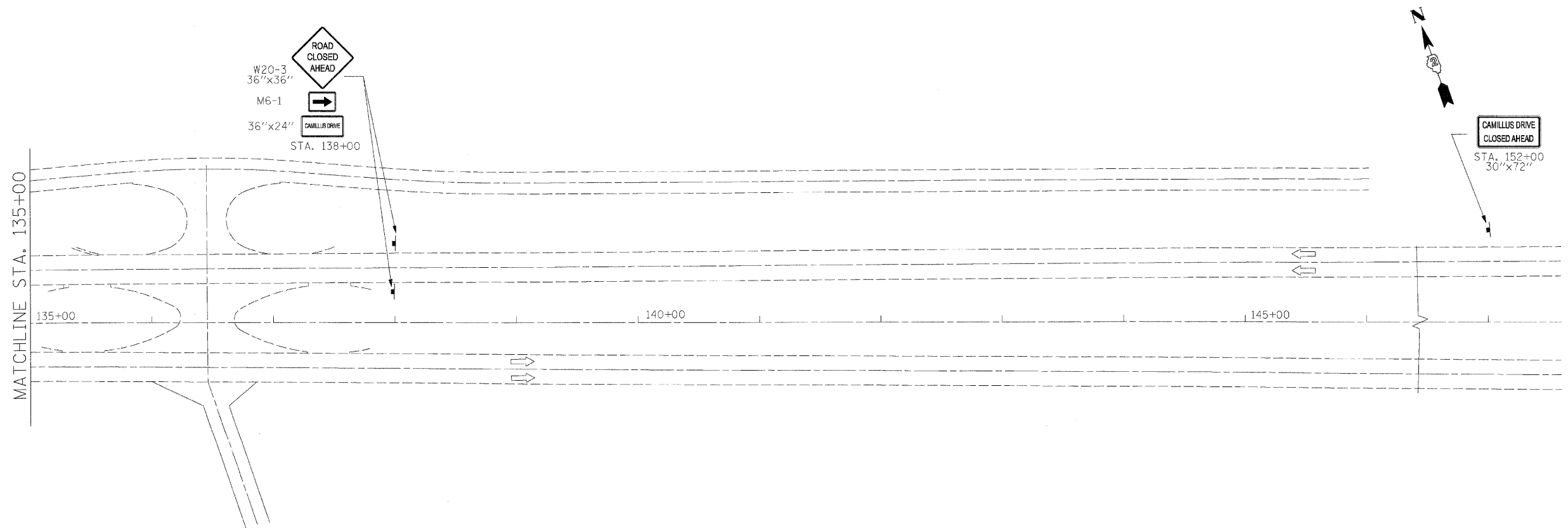
- RE-GRADING AROUND NILET SHALL BE INCLUDED IN THE COST OF TRAFFIC CONTROL AND PROTECTION, STANDARD 701422.

# STAGE 5



**SYMBOLS:**

- TEMPORARY PAVEMENT REMOVAL & PROPOSED CONCRETE MEDIAN, TYPE SB-9.06



|   |                         |                   |           |   |                                |                           |                           |             |         |            |              |           |
|---|-------------------------|-------------------|-----------|---|--------------------------------|---------------------------|---------------------------|-------------|---------|------------|--------------|-----------|
| FILE NAME =                                 | USER NAME = #USER#      | DESIGNED - KAC    | REVISED - | <b>STATE OF ILLINOIS<br/>DEPARTMENT OF TRANSPORTATION</b> | <b>STAGING PLANS (STAGE 5)</b> |                           |                           | F.A.P. RTE. | SECTION | COUNTY     | TOTAL SHEETS | SHEET NO. |
| G:\ENGIN\26-6792-13_TASK7\CIV\SH\ND\1164C68 | SHT010D_PROP_stage5.dgn | DRAWN - TMF / JNH | REVISED - |   | SCALE: 1" = 50'                | SHEET NO. 33 OF 80 SHEETS | STA. 99+27 TO STA. 114+33 | 301         | 43T & M | Jo Daviess | 80           | 33        |
|   | PLOT SCALE = #SCALE#    | CHECKED - KAC     | REVISED - |   | CONTRACT NO. 64C68             |                           |                           |             |         |            |              |           |
|   | PLOT DATE = 12/1/2009   | DATE - 11/13/2009 | REVISED - |   | ILLINOIS FED. AID PROJECT      |                           |                           |             |         |            |              |           |