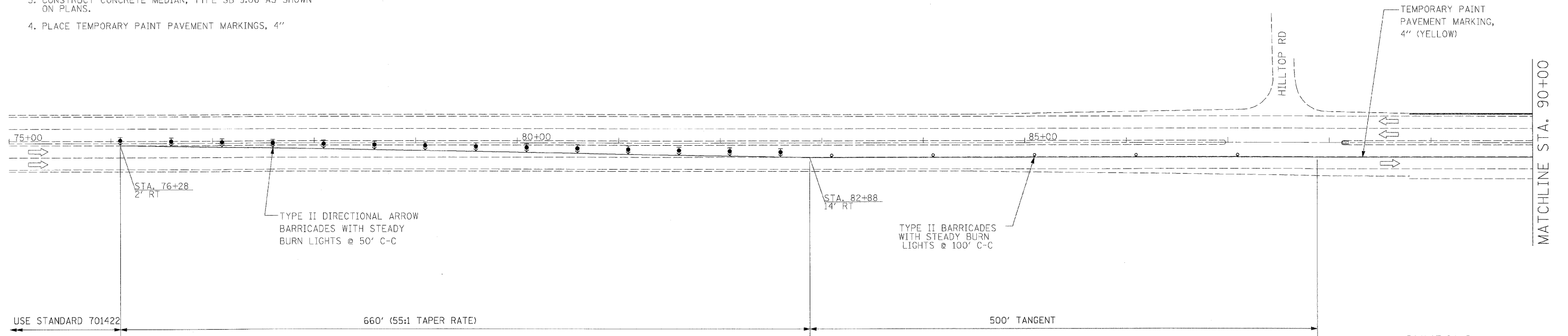


# STAGE 5

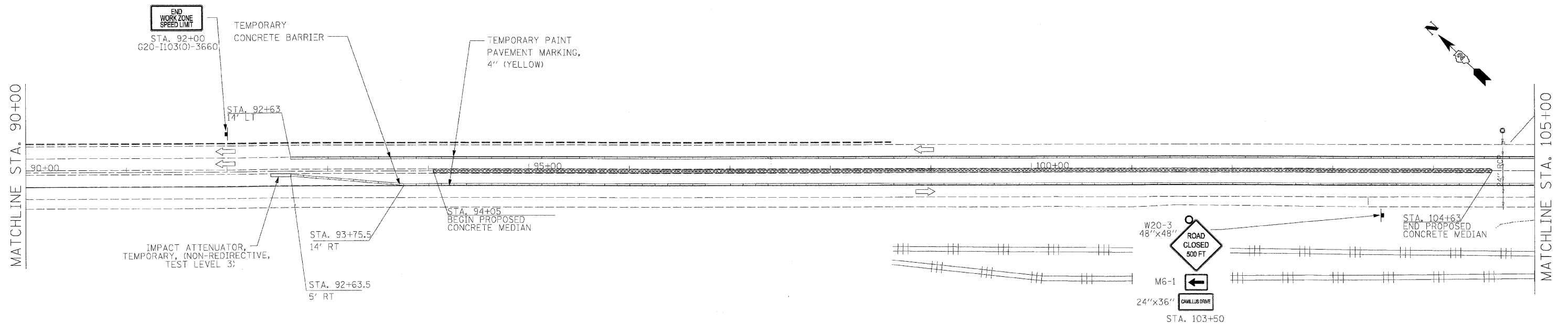
## NOTES:

1. SETUP TRAFFIC CONTROL AND PROTECTION ACCORDING TO STANDARD 701422. SEE STANDARD FOR ADDITIONAL SIGNS AND DEVICES. SHIFT TRAFFIC TO THE OUTSIDE LANE ON THE EB AND WB.
2. REMOVE TEMPORARY PAVEMENT.
3. CONSTRUCT CONCRETE MEDIAN, TYPE SB-9.06 AS SHOWN ON PLANS.
4. PLACE TEMPORARY PAINT PAVEMENT MARKINGS, 4"



**SYMBOLS:**  

 TEMPORARY PAVEMENT REMOVAL & PROPOSED CONCRETE MEDIAN, TYPE SB-9.06



**SYMBOLS:**  

 TEMPORARY PAVEMENT REMOVAL & PROPOSED CONCRETE MEDIAN, TYPE SB-9.06

FILE NAME =	USER NAME = #USER#	DESIGNED - KAC	REVISED -	<b>STATE OF ILLINOIS DEPARTMENT OF TRANSPORTATION</b>	<b>STAGING PLANS (STAGE 5)</b>		F.A.P. RTE.	SECTION	COUNTY	TOTAL SHEETS	SHEET NO.	
G:\ENGR\06-6790-13_TASK7\CI\Sh\1\DI164C68	SH1010B.PROP_stage5.dgn	DRAWN - IMF / JNH	REVISED -		SCALE: 1" = 50'	SHEET NO. 31 OF 80 SHEETS	STA. 99+27 TO STA. 114+33	301	43T & M	Jo Davless	80	31
	PLOT SCALE = #SCALE#	CHECKED - KAC	REVISED -					CONTRACT NO. 64C68				
	PLOT DATE = 12/1/2009	DATE - 11/13/2009	REVISED -					ILLINOIS FED. AID PROJECT				