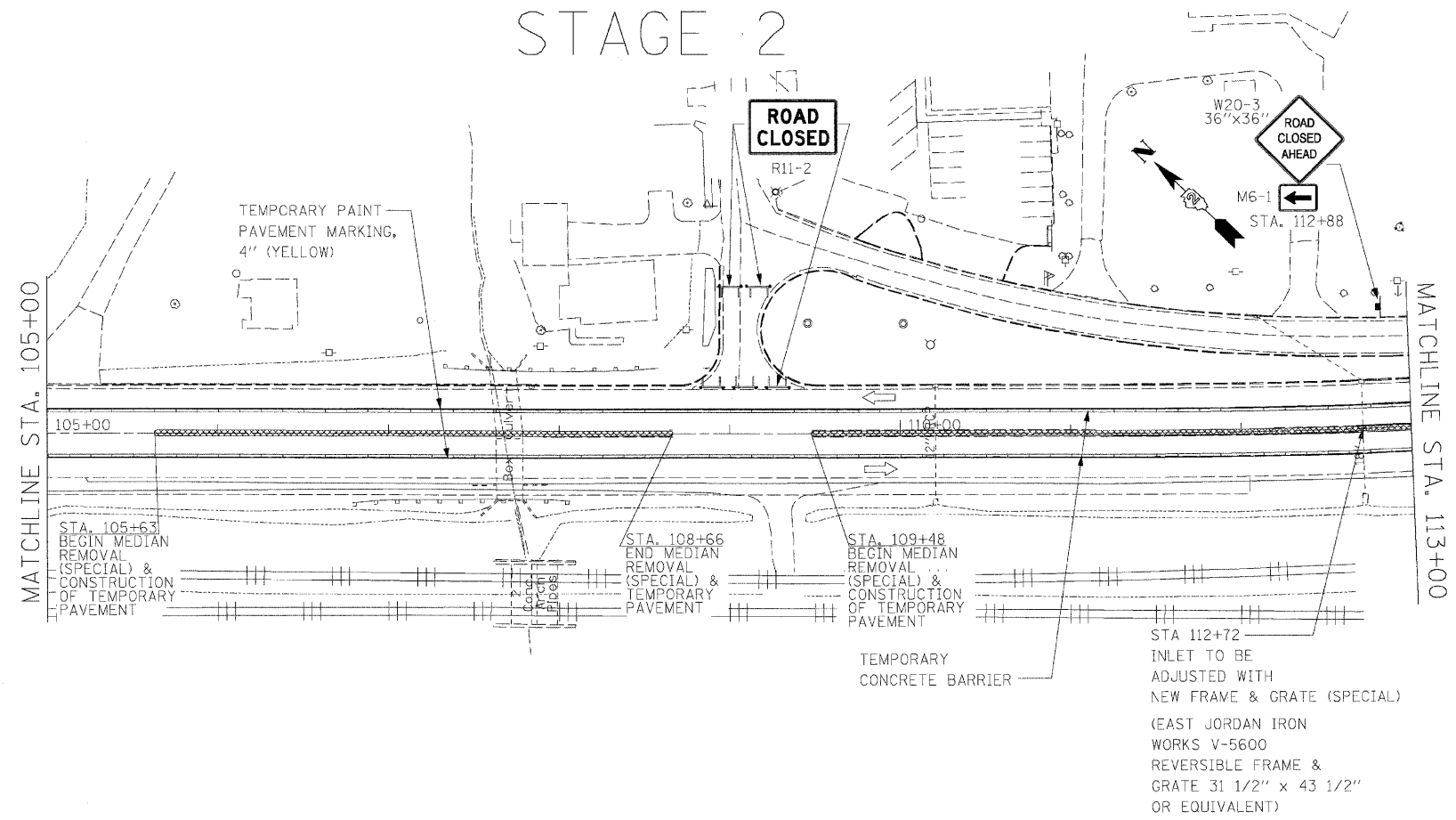
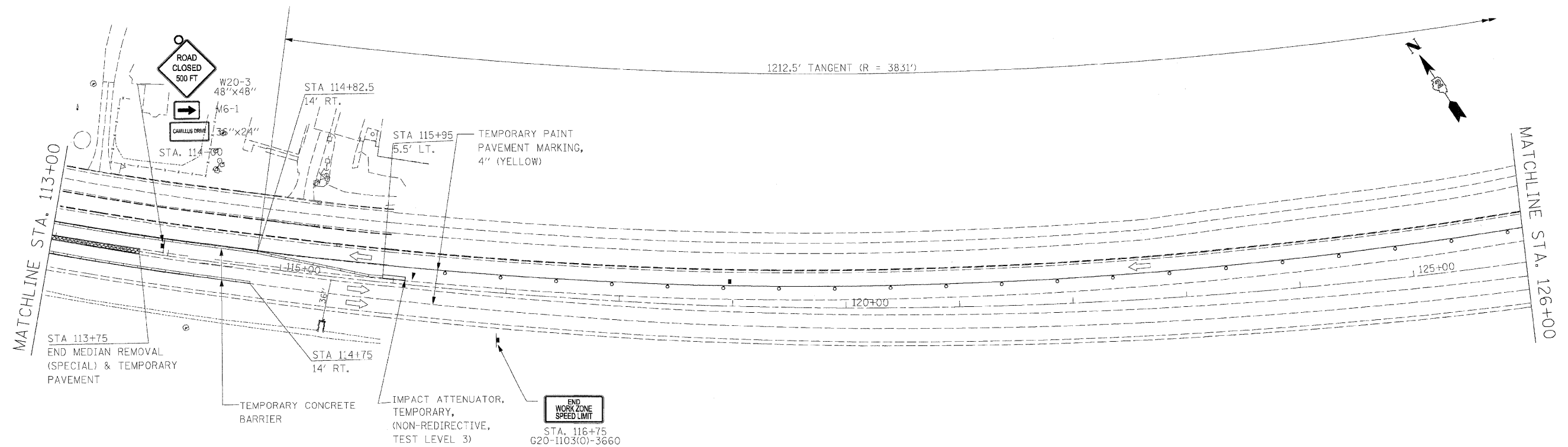


STAGE 2



SYMBOLS:

- MEDIAN REMOVAL (SPECIAL) & TEMPORARY PAVEMENT
- HOT-MIX ASPHALT SURFACE COURSE, MIX "C", N50, 6"
- AGGREGATE BASE COURSE, TYPE B, 12"



SYMBOLS:

- MEDIAN REMOVAL (SPECIAL) & TEMPORARY PAVEMENT
- HOT-MIX ASPHALT SURFACE COURSE, MIX "C", N50, 6"
- AGGREGATE BASE COURSE, TYPE B, 12"

FILE NAME =	USER NAME = \$USER\$	DESIGNED - KAC	REVISED -
G:\ENGIN\06-6790-13_TASK7\Civil\Sh\DI1164C68	SHT0288_PROP_stage2.dgn	DRAWN - TMF / JNH	REVISED -
	PLOT SCALE = \$SCALE\$	CHECKED - KAC	REVISED -
	PLOT DATE = 12/1/2009	DATE - 11/13/2009	REVISED -

**STATE OF ILLINOIS
DEPARTMENT OF TRANSPORTATION**

STAGING PLANS (STAGE 2)

SCALE: 1" = 50' SHEET NO. 23 OF 80 SHEETS STA. 99-27 TO STA. 114+33

F.A.P. RTE.	SECTION	COUNTY	TOTAL SHEETS	SHEET NO.
301	43T & M	Jo Daviess	80	23
				CONTRACT NO. 64C68
ILLINOIS FED. AID PROJECT				