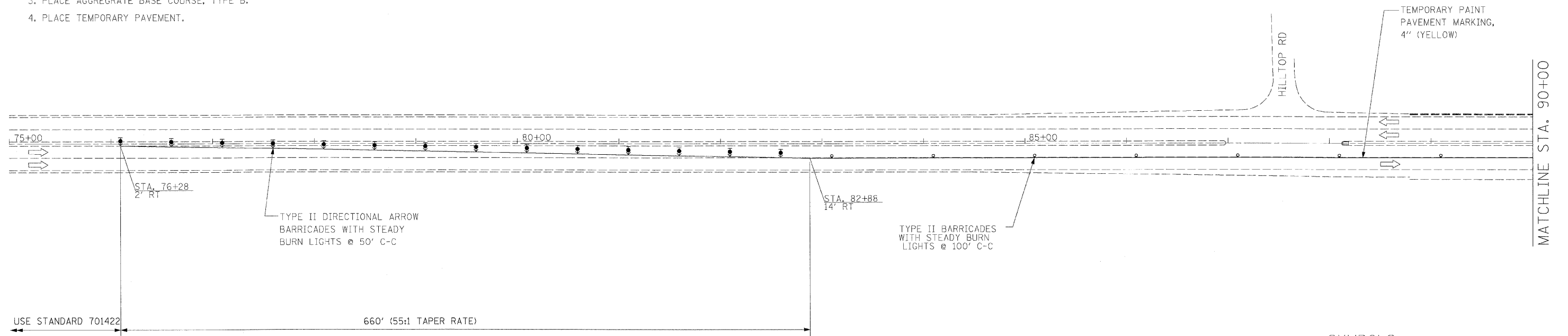


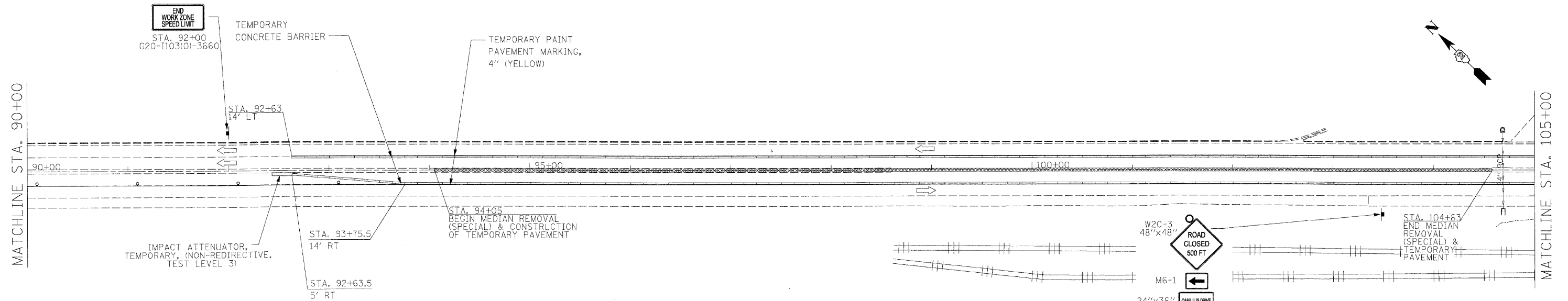
STAGE 2

NOTES:

1. SETUP TRAFFIC CONTROL AND PROTECTION ACCORDING TO STANDARD 701422. SEE STANDARD FOR ADDITIONAL SIGNS AND DEVICES. SHIFT TRAFFIC TO THE OUTSIDE EB AND WB LANES.
2. REMOVE CONCRETE MEDIAN (SPECIAL) AS SHOWN ON PLANS.
3. PLACE AGGREGATE BASE COURSE, TYPE B.
4. PLACE TEMPORARY PAVEMENT.



- SYMBOLS:**
- MEDIAN REMOVAL (SPECIAL) & TEMPORARY PAVEMENT
 - HOT-MIX ASPHALT SURFACE COURSE, MIX "C", N50, 6"
 - AGGREGATE BASE COURSE, TYPE B, 12"



- SYMBOLS:**
- MEDIAN REMOVAL (SPECIAL) & TEMPORARY PAVEMENT
 - HOT-MIX ASPHALT SURFACE COURSE, MIX "C", N50, 6"
 - AGGREGATE BASE COURSE, TYPE B, 12"

FILE NAME =	USER NAME = #USER#	DESIGNED - KAC	REVISED -
G:\ENGR\06-6790-13_TASK7\CV\Sh\1103(O)64C68_SHT020A_PROP_stage2.dgn		DRAWN - TMF / JNH	REVISED -
	PLOT SCALE = #SCALE#	CHECKED - KAC	REVISED -
	PLOT DATE = 12/1/2009	DATE - 11/13/2009	REVISED -

**STATE OF ILLINOIS
DEPARTMENT OF TRANSPORTATION**

STAGING PLANS (STAGE 2)

SCALE: 1" = 50' SHEET NO. 22 OF 80 SHEETS STA. 99+27 TO STA. 114+33

F.A.P. RTE.	SECTION	COUNTY	TOTAL SHEETS	SHEET NO.
301	43T & M	Jo Daviess	80	22
				CONTRACT NO. 64C68
ILLINOIS FED. AID PROJECT				