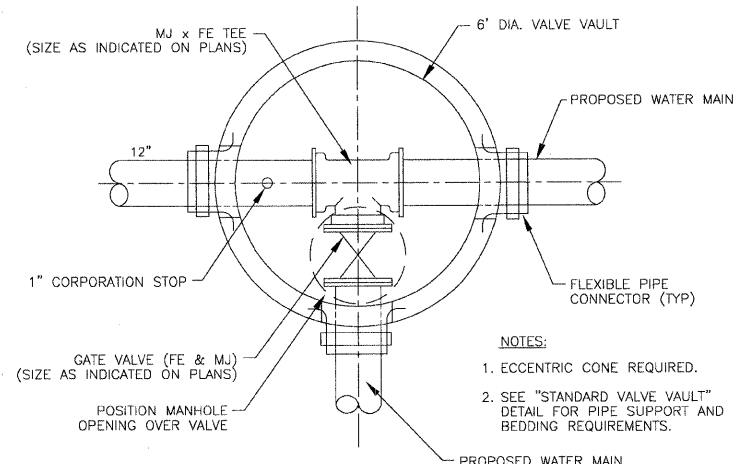
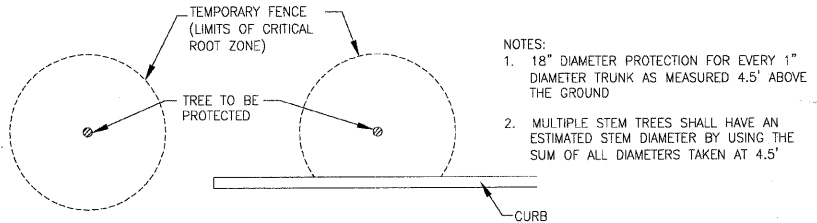


TYPICAL TRENCH DETAIL
NO SCALE

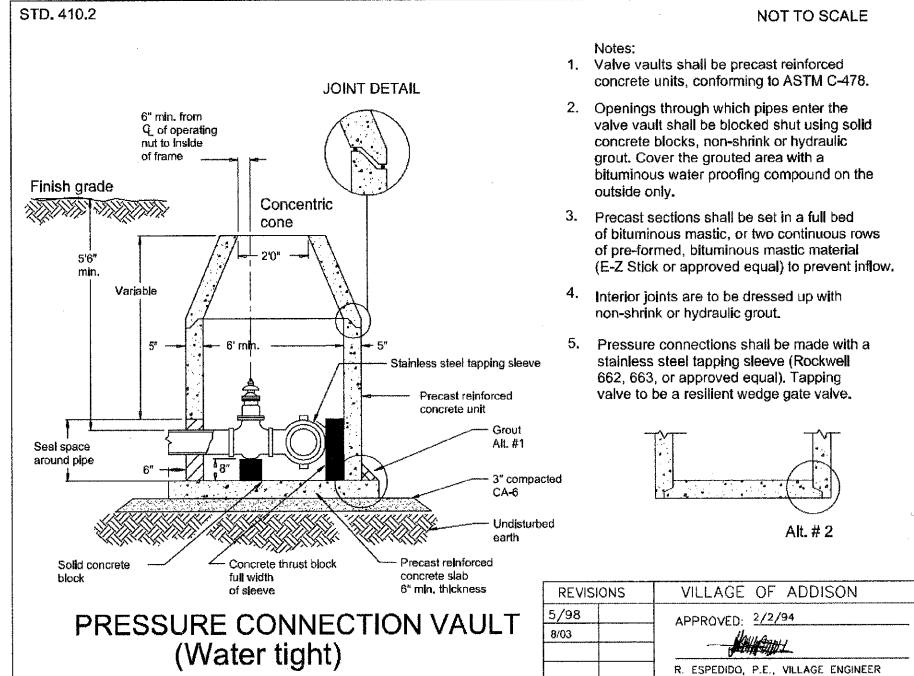
FOR PAVEMENT WITH AGGREGATE BASE AND COMPACTED SPECIAL GRANULAR BACKFILL MATERIAL
* FOR FLEXIBLE THERMOPLASTIC OR HDPE PIPE COMPLY WITH ASTM 2321, CLASS I OR II.
FOR RIGID PIPE COMPLY WITH ASTM C12, BEDDING CLASS B.



VALVE IN VAULT WITH TEE IN VAULT
NOT TO SCALE



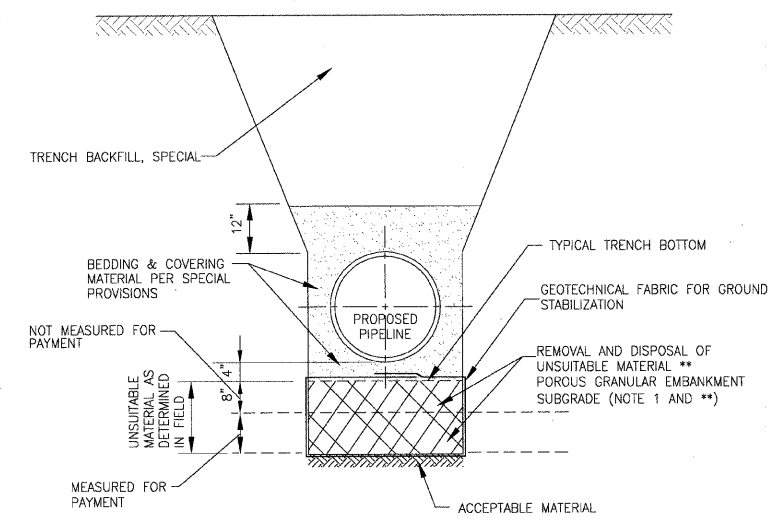
CRITICAL ROOT ZONE DETAIL FOR TEMPORARY FENCE, TREE PRUNING AND TREE ROOT PROTECTION
NOT TO SCALE



PRESSURE CONNECTION VAULT (Water tight)

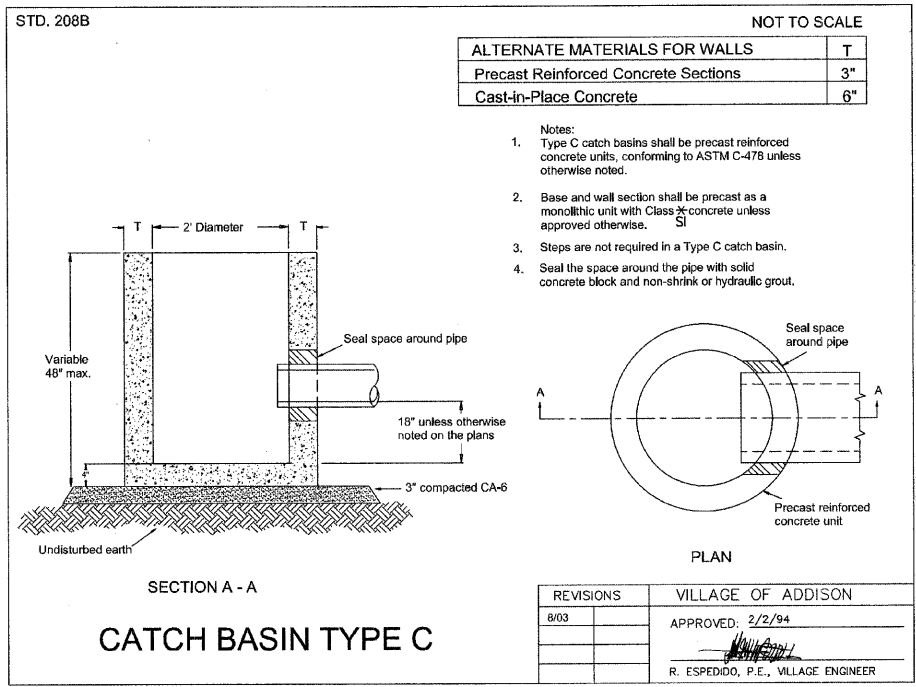
- NOT TO SCALE
- Notes:
1. Valve vaults shall be precast reinforced concrete units, conforming to ASTM C-478.
 2. Openings through which pipes enter the valve vault shall be blocked shut using solid concrete blocks, non-shrink or hydraulic grout. Cover the grouted area with a bituminous water proofing compound on the outside only.
 3. Precast sections shall be set in a full bed of bituminous mastic, or two continuous rows of pre-formed, bituminous mastic material (E-Z Stick or approved equal) to prevent inflow.
 4. Interior joints are to be dressed up with non-shrink or hydraulic grout.
 5. Pressure connections shall be made with a stainless steel tapping sleeve (Rockwell 662, 663, or approved equal). Tapping valve to be a resilient wedge gate valve.

REVISIONS	VILLAGE OF ADDISON
5/98	APPROVED: 2/2/94
8/03	
	R. ESPEDIDO, P.E., VILLAGE ENGINEER



OPEN CUT PIPELINE INSTALLATION UNSUITABLE MATERIAL REMOVAL/REPLACEMENT DETAIL
NO SCALE

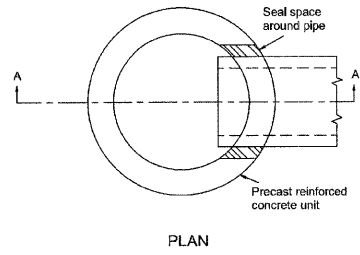
- DETAIL NOTES:
1. POROUS MATERIAL FOR PIPELINE CONSTRUCTION SHALL BE I.D.O.T. CA-1.
- ** POROUS GRANULAR EMBANKMENT, SUBGRADE (PGES) HAS BEEN PROVIDED FOR USE AT THE LOCATIONS INDICATED FOR SOILS THAT TEND TO BE UNSUITABLE OR UNSTABLE. THE ACTUAL NEED FOR REMOVAL AND REPLACEMENT WITH PGES WILL BE DETERMINED IN THE FIELD AT THE TIME OF CONSTRUCTION BY THE GEOTECHNICAL ENGINEER. ALL POTENTIALLY UNSTABLE SOILS SHOULD BE TESTED WITH A STATIC CONE PENETROMETER AND TREATED IN ACCORDANCE WITH ARTICLE 301.03 AND THE UNDERCUT GUIDELINES IN THE IDOT SUBGRADE STABILITY MANUAL. IF UNSTABLE AND/OR UNSUITABLE MATERIAL IS NOT ENCOUNTERED, THEN THE QUANTITY SHALL BE DEDUCTED AND NO ADDITIONAL COMPENSATION WILL BE DUE TO THE CONTRACTOR.



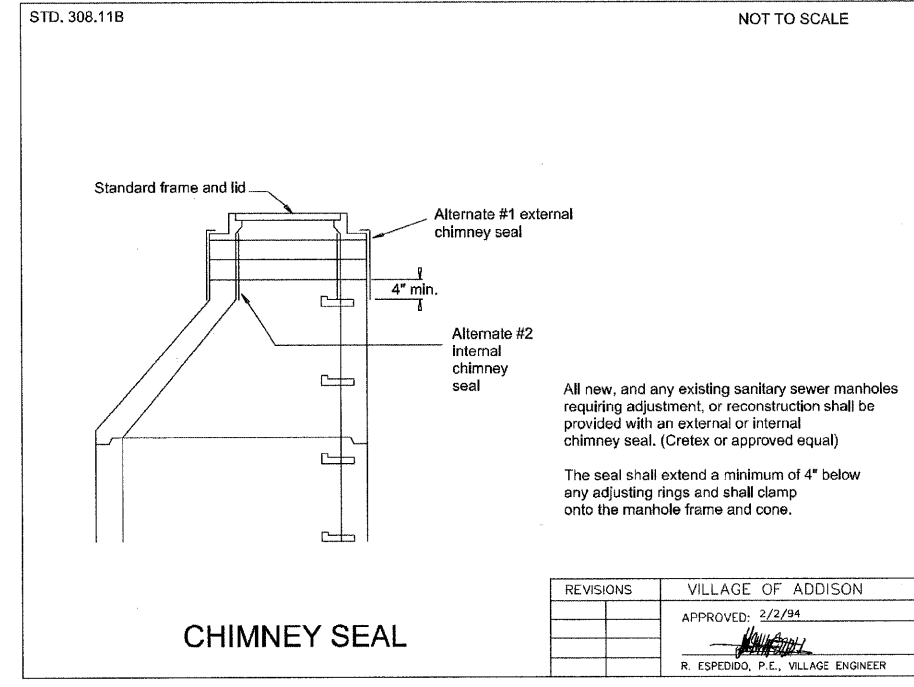
CATCH BASIN TYPE C

ALTERNATE MATERIALS FOR WALLS		T
Precast Reinforced Concrete Sections		3"
Cast-in-Place Concrete		6"

- Notes:
1. Type C catch basins shall be precast reinforced concrete units, conforming to ASTM C-478 unless otherwise noted.
 2. Base and wall section shall be precast as a monolithic unit with Class 2 concrete unless approved otherwise.
 3. Steps are not required in a Type C catch basin.
 4. Seal the space around the pipe with solid concrete block and non-shrink or hydraulic grout.



REVISIONS	VILLAGE OF ADDISON
8/03	APPROVED: 2/2/94
	R. ESPEDIDO, P.E., VILLAGE ENGINEER



CHIMNEY SEAL

All new, and any existing sanitary sewer manholes requiring adjustment, or reconstruction shall be provided with an external or internal chimney seal. (CreteX or approved equal)

The seal shall extend a minimum of 4" below any adjusting rings and shall clamp onto the manhole frame and cone.

REVISIONS	VILLAGE OF ADDISON
	APPROVED: 2/2/94
	R. ESPEDIDO, P.E., VILLAGE ENGINEER

I:\ADDON\070142-ARMY TRAIL-MILL LAPP & WATER MAIN\CADD-SURVEY\DRAWINGS\DWGS\070142-WM-BETS.DWG 55
 Plotted: 11/30/2009 9:24 AM By: 560KAR
 Copyright © 2009, By Baxter & Woodman, Inc.
 State of Illinois - Professional Design Firm
 License No. - 184-001121 - Expires 4-30-11

DESIGNED - JJS	REVISD - VILLAGE REVIEW 9-08-09
DRAWN - UKB	REVISD - VILLAGE REVIEW 11-05-09
CHECKED - SMV	REVISD - IDOT REVIEW 11-17-09
DATE - 8-19-09	REVISD -

VILLAGE OF ADDISON, ILLINOIS
MILL ROAD AND ARMY TRAIL BOULEVARD
STP IMPROVEMENTS

WATER MAIN AND MISCELLANEOUS DETAILS		COUNTY	TOTAL SHEETS	SHEET NO.
PROJECT NO: 070142	STA. TO STA.	DuPage	69	55
SCALE:		C-91-056-10	CONTRACT NO. 63427	
		FED. ROAD DIST. NO. 1	ILLINOIS FED. AID PROJECT M-8003 (474)	

*3884 ARMY TRAIL BLVD.
*2625 MILL ROAD