

STRUCTURES							
NO.	STATION	OFFSET	TYPE	EX. FRAME	PR. FRAME	RIM / EP	INVERT
S-65	221+50.3	30.5' LT		TY 3	TY 3		
S-66	221+43	30' RT		TY 3	TY 3		
S-66A	222+30	41' RT		TY 1 CL	TY 1 CL		
S-67	223+50.8	24.9' RT		TY 1 CL	TY 1 CL		
S-67A	223+27.4	30.2' RT	CATCH BASIN, TYPE A, 4'			694.5 EP	691.7 8" NE, 693.0± 8" S
S-67B	223+27	59' RT		TY 1 CL	TY 1 CL		
S-68	224+02	10.3' RT		TY 1 CL	TY 1 CL		690.5 8" SW
S-69	224+08.6	6.9' RT		TY 11	TY 11		
S-70	224+16.3	29.9' LT		TY 3	TY 3		

WM-P41
334 L.F. OF 8" WATER MAIN

WM-P42
65 L.F. OF 8" WATER MAIN (RJT)

WATER MAIN PIPES

WM-P43
50 L.F. OF 8" WATER MAIN (RJT)

WM-P44
75 L.F. OF 8" WATER MAIN (RJT)
HORIZONTAL DIRECTIONALLY DRILLED INTO PLACE

WM-P45
20 L.F. OF 8" WATER MAIN (RJT)

CONNECTIONS TO EXISTING WATER MAINS (NON-PRESSURE) - 8"

STA. 224+48 END RJT PIPE FROM SOUTH AND BEGIN H.D.D. INSTALLED WATER MAIN TO NORTH

JOHN F. KENNEDY DRIVE STA. 224+43.51

ARMY TRAIL BLVD. STA. 400+00.00

WATER MAIN FITTINGS (RJT)

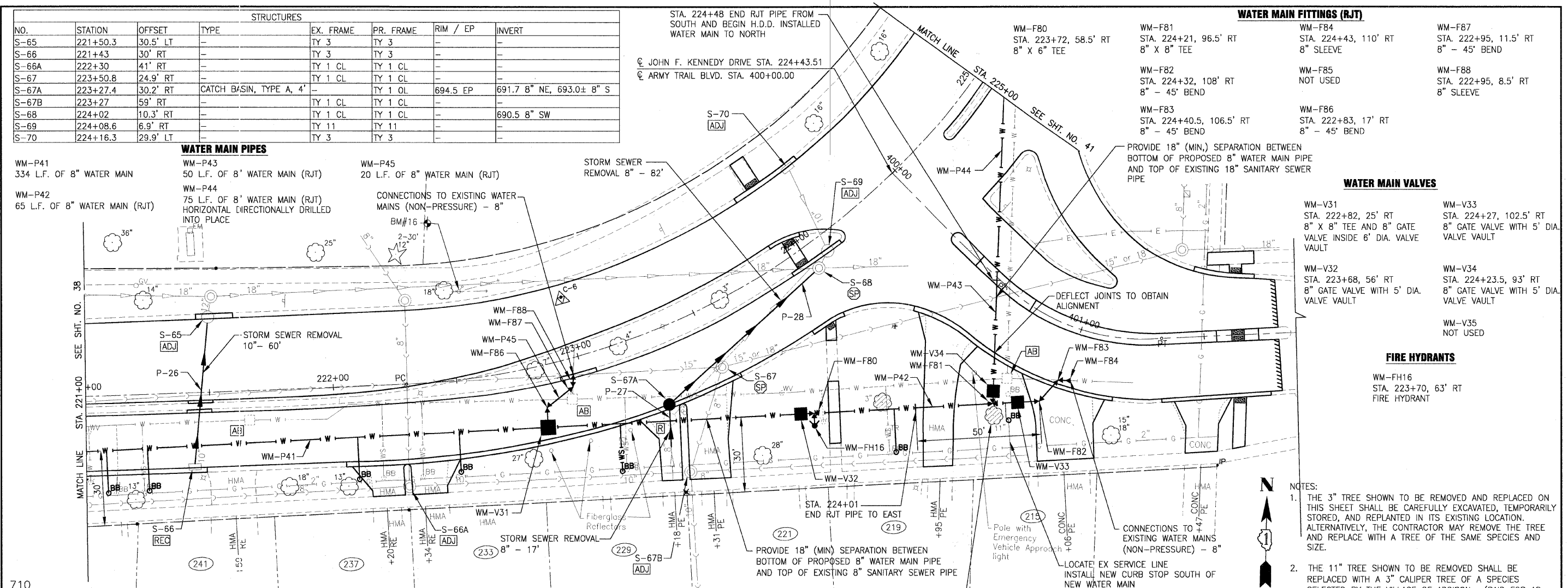
WM-F80 STA. 223+72, 58.5' RT 8" X 6" TEE	WM-F81 STA. 224+21, 96.5' RT 8" X 8" TEE	WM-F84 STA. 224+43, 110' RT 8" SLEEVE	WM-F87 STA. 224+95, 11.5' RT 8" - 45' BEND
WM-F82 STA. 224+32, 108' RT 8" - 45' BEND	WM-F83 STA. 224+40.5, 106.5' RT 8" - 45' BEND	WM-F85 NOT USED	WM-F88 STA. 222+95, 8.5' RT 8" SLEEVE
		WM-F86 STA. 222+83, 17' RT 8" - 45' BEND	

WATER MAIN VALVES

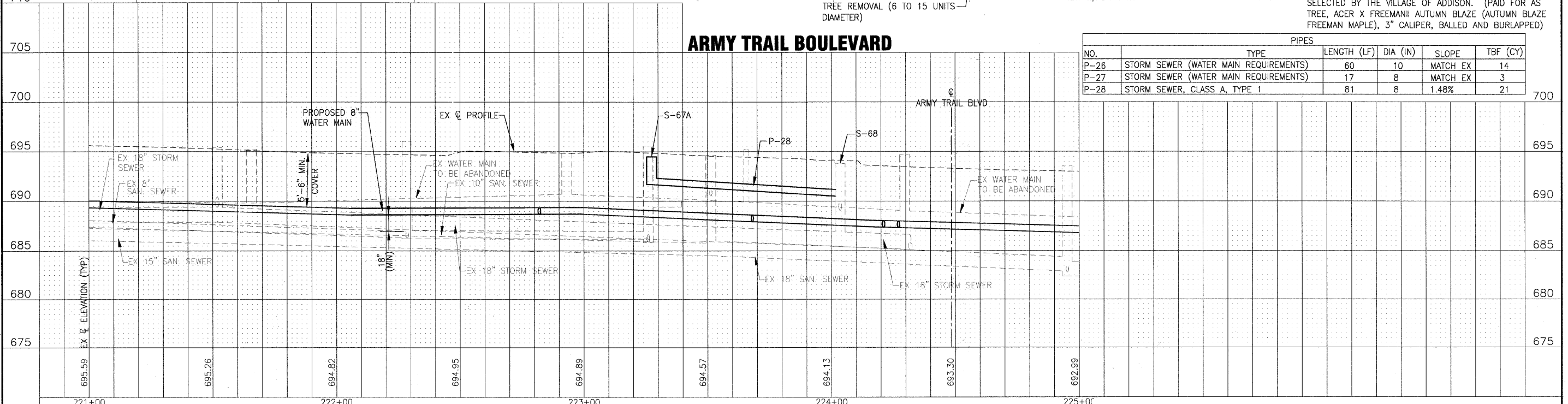
WM-V31 STA. 222+82, 25' RT 8" X 8" TEE AND 8" GATE VALVE INSIDE 6' DIA. VALVE VAULT	WM-V33 STA. 224+27, 102.5' RT 8" GATE VALVE WITH 5' DIA. VALVE VAULT
WM-V32 STA. 223+68, 56' RT 8" GATE VALVE WITH 5' DIA. VALVE VAULT	WM-V34 STA. 224+23.5, 93' RT 8" GATE VALVE WITH 5' DIA. VALVE VAULT
	WM-V35 NOT USED

FIRE HYDRANTS

WM-FH16
STA. 223+70, 63' RT
FIRE HYDRANT



- NOTES:
- THE 3" TREE SHOWN TO BE REMOVED AND REPLACED ON THIS SHEET SHALL BE CAREFULLY EXCAVATED, TEMPORARILY STORED, AND REPLANTED IN ITS EXISTING LOCATION. ALTERNATIVELY, THE CONTRACTOR MAY REMOVE THE TREE AND REPLACE WITH A TREE OF THE SAME SPECIES AND SIZE.
 - THE 11" TREE SHOWN TO BE REMOVED SHALL BE REPLACED WITH A 3" CALIPER TREE OF A SPECIES SELECTED BY THE VILLAGE OF ADDISON. (PAID FOR AS TREE, ACER X FREEMANII AUTUMN BLAZE (AUTUMN BLAZE FREEMAN MAPLE), 3" CALIPER, BALLED AND BURLAPPED)



PIPES					
NO.	TYPE	LENGTH (LF)	DIA (IN)	SLOPE	TBF (CY)
P-26	STORM SEWER (WATER MAIN REQUIREMENTS)	60	10	MATCH EX	14
P-27	STORM SEWER (WATER MAIN REQUIREMENTS)	17	8	MATCH EX	3
P-28	STORM SEWER, CLASS A, TYPE 1	81	8	1.48%	21

	DESIGNED - JJS	REVISED - VILLAGE REVIEW 9-08-09	<p align="center">VILLAGE OF ADDISON, ILLINOIS MILL ROAD AND ARMY TRAIL BOULEVARD STP IMPROVEMENTS</p>	<p align="center">DRAINAGE AND UTILITY ARMY TRAIL BOULEVARD</p>	<p>*3884 ARMY TRAIL BLVD. *2625 MILL ROAD</p>	F.A.U. RTE.	SECTION	COUNTY	TOTAL SHEETS	SHEET NO.
	DRAWN - UKB	REVISED - VILLAGE REVIEW 11-05-09				09-00098-00-RS	DuPage	69	40	
CHECKED - SMV	REVISED - IDOT REVIEW 11-17-09	SCALE: HORIZ. 1"=20' / VERT. 1"=5'		PROJECT NO: 070142 STA. 221+00 TO STA. 225+00		C-91-056-10		CONTRACT NO. 63427		
DATE - 8-19-09	REVISED -					FED. ROAD DIST. NO. 1		ILLINOIS FED. AID PROJECT M-9003 (474)		

I:\ADDISON\070142-ARMY TRAIL-MILL LAPP & WATER MAIN\CADD-SURVEY\DRAWINGS\DWGS\070142-ARMY-TR-WM-PRF.DWG PP40
 Plotted: 1/23/2009 9:37 PM By: 2310KB
 Copyright © 2009 by Baxter Engineering, Inc.
 Illinois Professional Engineer License No. 184-001121, Exp. 08/04/11