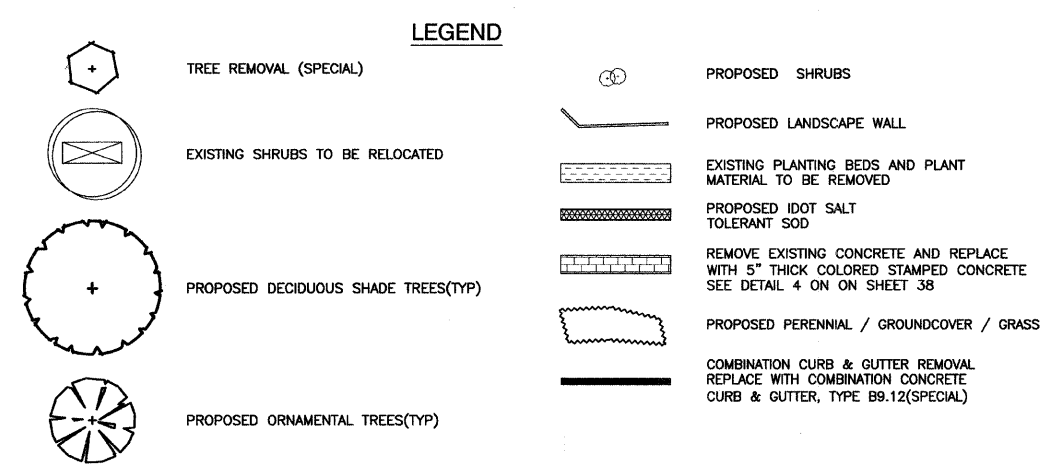
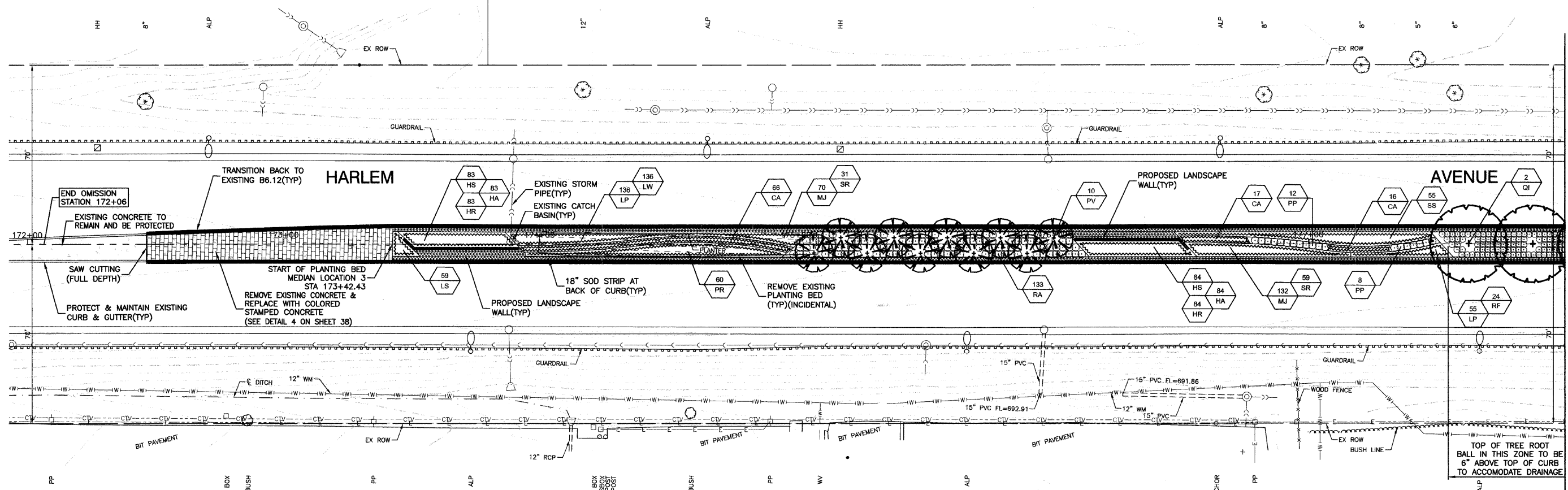
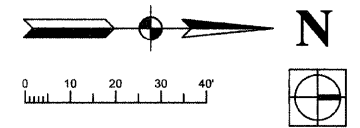


SECTION 24, TOWNSHIP 36, RANGE 12
SECTION 19, TOWNSHIP 36, RANGE 13



NOTES:
 ALL PLANTINGS SHALL FOLLOW IDOT BUREAU OF DESIGN & ENVIRONMENT MANUAL - CHAPTER 59 - LANDSCAPE DESIGN AND EROSION CONTROL 59-7.09 PLANTING IN URBANIZED AREA FOR SIGHT DISTANCES.
 ALL AREAS TO BE LANDSCAPED SHALL BE EXCAVATED TO THE DEPTH APPROPRIATE FOR THE PROPOSED PLANTINGS. NO SOD SHALL REMAIN IN NEW PLANTING AREAS.
 PLANT QUANTITIES SHOWN ON DRAWINGS ARE APPROXIMATE. CONTRACTOR SHALL PROVIDE PLANT MATERIALS SUFFICIENT TO COVER AREAS SHOWN ON PLANS AT THE SPACINGS INDICATED.
 ANY AREAS OUTSIDE OF THE LANDSCAPE BEDS THAT ARE DISTURBED SHALL BE REPLACED IN KIND.
 FOR LANDSCAPE PLANTING DETAILS SEE SHEETS 36 & 37.
 FOR PROPOSED LANDSCAPE WALL DETAILS SEE SHEET 38.
 NO PLANTING SHALL BE CLOSER THAN 18" FROM BACK OF MEDIAN CURB. NO TREES SHALL BE CLOSER THAN 4' FROM BACK OF MEDIAN CURB.
 FOR ADDITIONAL PLANTING NOTES SEE SHEET 36.
 FOR PLANT SCHEDULE SEE SHEET 2.
 FOR CONCRETE DETAILS SEE SHEET 38.

BENCH MARK:35
 SQUARE CUT ON SW CONC BASE OF ALP, 3RD POLE N. OF 167TH STREET, EAST SIDE OF HARLEM AVENUE
 ELEVATION=702.30

FILE NAME = 09493-PLAN-01 - P17	USER NAME =	DESIGNED -- SDG	REVISED --	STATE OF ILLINOIS DEPARTMENT OF TRANSPORTATION	HARLEM AVENUE BEAUTIFICATION - STREETSCAPING LANDSCAPING PLAN	F.A.P. RTE.	SECTION	COUNTY	TOTAL SHEETS	SHEET NO.
	PLOT SCALE =	CHECKED -- JSP	REVISED --			348	09-00108-00-LS	COOK	38	9
PLOT DATE = 11-30-09	DRAWN -- PS	REVISED --		SCALE: 1"=20'	SHEET NO. 9 OF 38 SHEETS	STA. TO STA.	CONTRACT NO. 63412			
	CHECKED -- AG	REVISED --					FED. ROAD DIST. NO. 1 ILLINOIS FED. AID PROJECT ARA-00D1(809)			