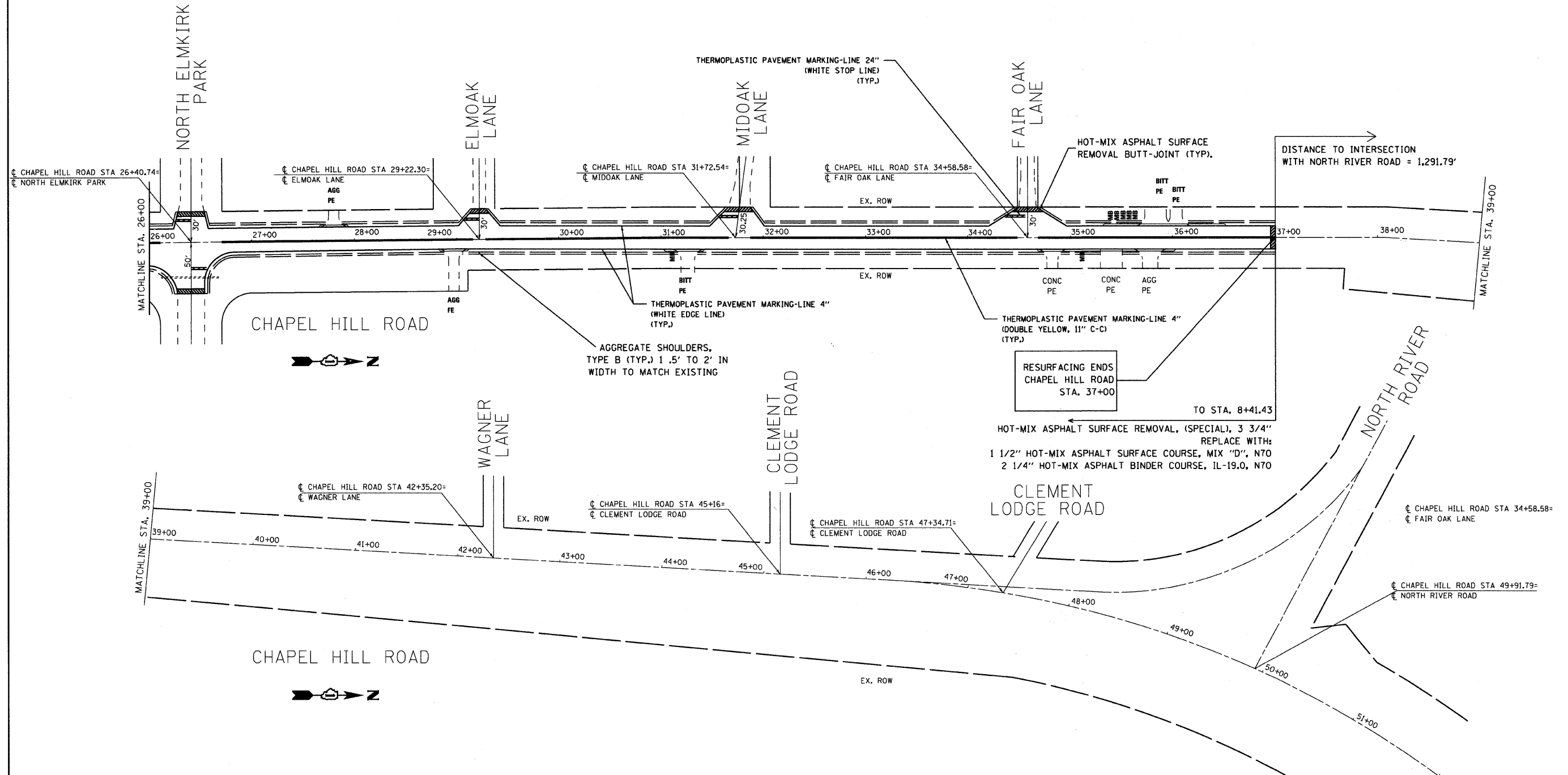


OMISSIONS

② Exist. Improvements from Sta. 37+00 to Sta. 92+19.55



NOTES:

- 1) FOR PAVEMENT MARKING DETAILS, FOLLOW DISTRICT 1 STANDARD TC-13 "DISTRICT ONE TYPICAL PAVEMENT MARKINGS", WHERE APPLICABLE.
- 2) SIDE STREET PAVEMENT TO EXTEND TO RIGHT OF WAY OF CHAPEL HILL ROAD BASED ON CURRENT CONDITION OF SIDE STREET SIGHT OF WAYS.

FILE NAME =	USER NAME = #USER#	DESIGNED -	REVISED -	McHENRY COUNTY DIVISION OF TRANSPORTATION CHAPEL HILL ROAD IMPROVEMENTS	PROPOSED PLAN			F.A.U. RTE. 0167	SECTION 09-00366-00-RS	COUNTY McHENRY	TOTAL SHEETS 19	SHEET NO. 6
FILEL		DRAWN -	REVISED -		SCALE: 1"=50'	SHEET NO. 2 OF 10 SHEETS	STA. 26+00 TO STA. 52+00	FED. ROAD DIST. NO.	ILLINOIS	FED. AID PROJECT	CONTRACT NO. 63380	
		CHECKED -	REVISED -									
		DATE -	REVISED -									