

FOR INDEX OF SHEETS, SEE SHEET NO. 2

FOR INDEX OF HIGHWAY STANDARDS, SEE SHEET NO. 2

PROJECT LOCATED IN THE VILLAGE OF SHOREWOOD

STATE OF ILLINOIS
 DEPARTMENT OF TRANSPORTATION
 DIVISION OF HIGHWAYS

PLANS FOR PROPOSED FEDERAL AID HIGHWAY

FAU ROUTE 0375 (RAVEN ROAD)

SEIL ROAD TO VALENCIA DRIVE

RESURFACING

PROJECT No.: ARA-M-9003(526)
 VILLAGE OF SHOREWOOD
 SECTION No.: 09-00027-00-RS
 JOB No: C-91-727-09
 WILL COUNTY

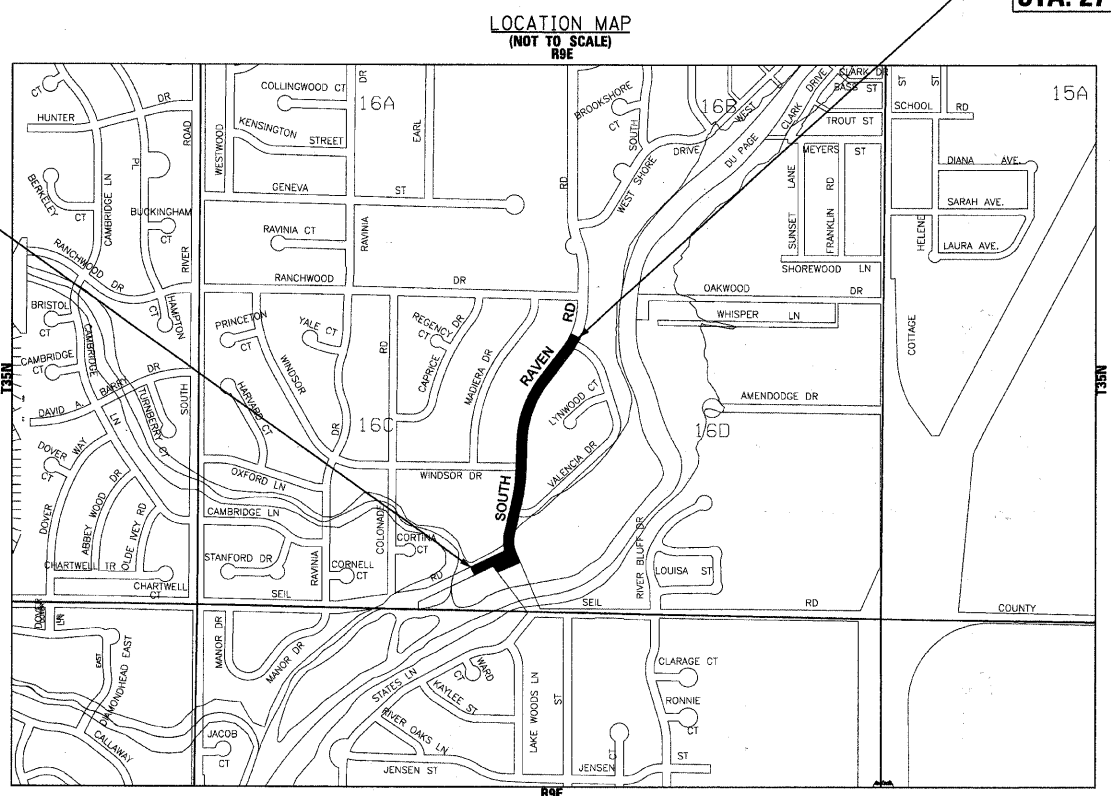
F.A.U. RTE.	SECTION	COUNTY	TOTAL SHEETS	SHEET NO.
•	09-00027-00-RS	WILL	13	1
STA.	TO STA.			
FED. ROAD DIST. NO	ILLINOIS	FED AID PROJECT		
C-91-727-09		ARA-M-9003(526)		
• FAU 0375 SOUTH RAVEN ROAD				
CONTRACT NO. 63326				

TRAFFIC DATA
 SOUTH RAVEN ROAD
 POSTED & DESIGN SPEED LIMIT = 30 MPH
 2008 ADT = 2,200

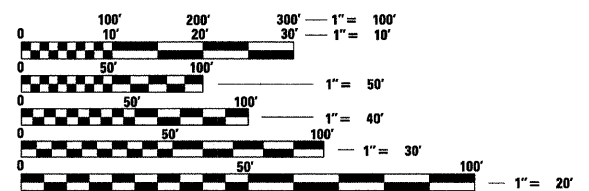
DESIGN DESIGNATION
 COLLECTOR

FAU 0375 RAVEN RD
 PROJECT BEGINS
 STA. 7 + 40

FAU 0375 RAVEN RD
 PROJECT ENDS
 STA. 27 + 97



TROY TOWNSHIP
 GROSS LENGTH OF IMPROVEMENT = 2,057 LF OR 0.39 MILES
 NET LENGTH OF IMPROVEMENT = 2,057 LF OR 0.39 MILES



FULL SIZE PLANS HAVE BEEN PREPARED USING STANDARD ENGINEERING SCALES. REDUCED SIZED PLANS WILL NOT CONFORM TO STANDARD SCALES. IN MAKING MEASUREMENTS ON REDUCED PLANS, THE ABOVE SCALES MAY BE USED.

J.U.L.I.E.
 JOINT UTILITY LOCATION INFORMATION FOR EXCAVATION
 1-800-892-0123

STATE OF ILLINOIS
 DEPARTMENT OF TRANSPORTATION
 DIVISION OF HIGHWAYS

APPROVED *[Signature]* Nov 23, 2009
 DIRECTOR OF PUBLIC WORKS

PASSED *[Signature]* DECEMBER 3, 2009
 DISTRICT ENGINEER OF LOCAL ROADS AND STREETS

RELEASING FOR BID
 BASED ON LIMITED REVIEW DECEMBER 8, 2009
 DEPUTY DIRECTOR OF HIGHWAYS, REGION 1 ENGINEER *[Signature]*

PRINTED BY THE AUTHORITY
 OF THE STATE OF ILLINOIS

DESIGNED BY BAXTER & WOODMAN, INC.
 STATE OF ILLINOIS - PROFESSIONAL DESIGN FIRM
 LICENSE NO. 184-00211 - EXPIRES 4/30/2011
 4885550 960650 AM 11/23/2009
 FIELD ENGINEER MELCHOR MANGUERA, P.E. (847-705-4408)



NATHAN J. PECK
 62-057588
 LICENSED PROFESSIONAL ENGINEER OF ILLINOIS
 PROJECT MANAGER
 "LICENSE EXPIRES 11-30-11"

CHRISTINE A. COO
 62-059884
 LICENSED PROFESSIONAL ENGINEER OF ILLINOIS
 PROJECT ENGINEER
 "LICENSE EXPIRES 11-30-11"

Burlington, Wisconsin 262.763.7834
 Crystal Lake, Illinois 815.459.1260
 DeKalb, Illinois 815.787.3111
 Itasca, Illinois (Mokena, Illinois) 630.773.1870
 Grayslake, Illinois 708.478.2090
 Plainfield, Illinois 815.609.7425
 Madison, Wisconsin 608.347.1542
 Chicago, Illinois 312.578.0050

(OFFICE WHICH PREPARED PLANS)

CONTRACT NO. 63326

B&W PROJECT NO.: 090303.40 DATE: 11-23-09

GENERAL NOTES

- ALL CONSTRUCTION SHALL BE DONE IN ACCORDANCE WITH THE DETAILS IN THE PLANS, THE SPECIAL PROVISIONS INCLUDED IN THE CONTRACT DOCUMENTS, AND THE LATEST EDITION OF THE FOLLOWING STATE OF ILLINOIS SPECIFICATIONS: "THE STANDARD SPECIFICATIONS FOR ROAD AND BRIDGE CONSTRUCTION" (REFERRED TO AS THE "STANDARD SPECIFICATIONS"), THE "SUPPLEMENTAL SPECIFICATIONS AND RECURRING SPECIAL PROVISIONS", THE "MANUAL ON UNIFORM TRAFFIC CONTROL DEVICES FOR STREETS AND HIGHWAYS" AND THE "MANUAL OF TEST PROCEDURES FOR MATERIALS".
- THE CONTRACTOR SHALL HAVE THE RESPECTIVE UTILITY COMPANIES FIELD LOCATE ALL THEIR FACILITIES PRIOR TO BEGINNING CONSTRUCTION. THE CONTRACTOR SHALL ALSO VERIFY THE DEPTHS OF THE EXISTING UTILITIES IF NECESSARY. ALL RELOCATION OR LOWERING OF UTILITIES SHALL BE COORDINATED BY THE CONTRACTOR.
- THE CONTRACTOR SHALL BE RESPONSIBLE FOR THE PROTECTION OF ALL UNDERGROUND OR SURFACE UTILITIES EVEN THOUGH THEY MAY NOT BE SHOWN ON THE PLANS. ANY UTILITY THAT IS DAMAGED DURING CONSTRUCTION SHALL BE REPAIRED OR REPLACED AT THE CONTRACTOR'S EXPENSE TO THE SATISFACTION OF THE ENGINEER OR VILLAGE.
- THE CONTRACTOR SHALL NOTIFY THE ENGINEER AT LEAST 48 HOURS IN ADVANCE OF BEGINNING WORK TO OBTAIN VILLAGE UTILITY LOCATIONS AND SHALL COORDINATE ALL CONSTRUCTION OPERATIONS WITH THE ENGINEER.
- MATERIALS RESULTING FROM THE REMOVAL OF PAVEMENT, DRIVEWAYS, CURB AND GUTTER, HOT-MIX ASPHALT SURFACES, SIDEWALKS AND EXCAVATION FOR NEW SIDEWALKS ETC. SHALL BE REMOVED AT THE END OF EACH DAY TO AN APPROVED SITE. IN THE JUDGMENT OF THE VILLAGE, SHOULD IT BE NECESSARY TO REMOVE SUCH MATERIALS, THE VILLAGE WILL HAVE THE MATERIAL REMOVED AND THE CONTRACTOR WILL BE BILLED (CHARGED) ACCORDINGLY.
- THE CONTRACTOR IS RESPONSIBLE FOR OBTAINING ALL WATER REQUIRED FOR THIS PROJECT FROM AN OFFSITE LOCATION.
- IT WILL BE THE CONTRACTOR'S RESPONSIBILITY TO NOTIFY RESIDENTS AND THE VILLAGE WHEN ACCESS TO THEIR DRIVEWAYS WILL BE TEMPORARILY CLOSED DUE TO DRIVEWAY REPLACEMENT. THE CONTRACTOR SHALL DISTRIBUTE NOTICES PROVIDED BY THE VILLAGE TO RESIDENTS. EVERY EFFORT SHALL BE MADE TO ACCOMMODATE ACCESS TO THESE PROPERTIES INCLUDING KNOCKING ON DOORS WHEN DRIVEWAYS ARE ABOUT TO BE CLOSED.
- THE CONTRACTOR SHALL PROTECT AND CAREFULLY PRESERVE ALL SECTION OR SUBSECTION MONUMENTS OR PROPERTY OR REFERENCE MARKERS UNTIL THE OWNERS, HIS AGENT OR AN AUTHORIZED SURVEYOR HAS WITNESSED OR OTHERWISE REFERENCED THEIR LOCATIONS.
- THE CONTRACTOR SHALL NOTIFY IDOT BUREAU OF MATERIALS (PHONE 847-705-4337) AT LEAST 24 HOURS PRIOR TO THE PLACEMENT OF HMA OR CONCRETE.
- ANY SIGNS OR MAILBOXES THAT ARE IN CONFLICT WITH THE PROPOSED CONSTRUCTION SHALL BE REMOVED AND REPLACED IN ACCORDANCE WITH VILLAGE STANDARDS AND INCLUDED IN THE COST OF THE CONTRACT. MAIL SERVICE SHALL BE MAINTAINED AT ALL TIMES.
- EXISTING PAVEMENT, DRIVEWAY PAVEMENT, CURB AND GUTTER AND SIDEWALK TO REMAIN IN PLACE SHALL BE SAW CUT FULL DEPTH TO PROVIDE A NEAT VERTICAL FACE BETWEEN THE PROPOSED AND EXISTING AND SHALL BE INCLUDED IN THE PRICE OF THE APPROPRIATE REMOVAL PAY ITEM.
- THE CONTRACTOR SHALL PROVIDE AND INSTALL TWO (2) WEIGHTED SANDBAGS ON EACH TYPE I OR TYPE II BARRICADE USED. ONE (1) WEIGHTED SANDBAG SHALL BE PLACED ACROSS EACH BOTTOM RAIL.
- THE PRIME COAT APPLICATION RATE SHALL BE 0.1 GAL/SY. THE MC-30 PRIME COAT APPLICATION RATE SHALL BE 0.3 GAL/SY.
- THE LOCATIONS OF THE CLASS D PATCHES SHALL BE DETERMINED BY THE ENGINEER IN THE FIELD.
- ALL AGGREGATE USED ON THIS PROJECT SHALL BE CRUSHED MATERIAL.
- THE QUANTITIES FOR PATCHING WILL NOT EXCEED THE AMOUNT LISTED IN THE SUMMARY OF QUANTITIES.
- THE DAYS PAVING OPERATION SHALL RESULT IN A SINGLE TRANSVERSE JOINT. ANY COLD LONGITUDINAL JOINTS WILL NOT BE ACCEPTED. PROVIDING A SINGLE TRANSVERSE JOINT SHALL BE ACCOMPLISHED BY PAVING ONE LANE OF SUFFICIENT LENGTH THAT WILL ALLOW FOR THE PAVING OF THE ADJACENT LANE IN THE SAME DAY.

- ON STREETS TO BE FULL WIDTH MILLED (2" OR MORE), THE STRUCTURES IN THE PAVEMENT SHALL BE ADJUSTED IN ACCORDANCE WITH THE IDOT DETAIL "DETAILS FOR FRAMES AND LIDS ADJUSTMENT WITH MILLING". THIS WORK SHALL BE PAID FOR AT THE CONTRACT UNIT PRICE FOR DRAINAGE AND UTILITY STRUCTURES TO BE ADJUSTED.
- THE CONTRACTOR SHALL UTILIZE A MECHANICAL SWEEPER TO CLEAN STREETS AFFECTED BY CONTRACTORS OPERATIONS, INCLUDING HAUL ROUTES, AT LEAST TWICE PER WEEK AND ADDITIONALLY AS DIRECTED BY THE ENGINEER. THIS WORK SHALL BE INCLUDED IN THE COST OF CONSTRUCTION.
- NO DAMAGE TO PARKWAYS IS PLANNED AS PART OF THESE IMPROVEMENTS. ANY AND ALL RESTORATION OF DAMAGED PARKWAYS SHALL CONSIST OF NECESSARY SUB-GRADE MATERIAL AS APPROVED BY THE ENGINEER, TOPSOIL 4-INCH AND NATIVE SOD IN ACCORDANCE WITH SECTION 1081.03. RESTORATION SHALL BE INCLUDED IN THE PAY ITEM WHICH CAUSED THE DISTURBANCE.
- IN THE AREAS WHERE SIDEWALK IS TO BE REMOVED AND REPLACED, THE REMOVAL AND DISPOSAL OF ANY ADDITIONAL MATERIAL REQUIRED TO ESTABLISH THE PROPOSED SIDEWALK SUBGRADE ELEVATION SHALL BE INCLUDED IN THE PAY ITEM FOR SIDEWALK REMOVAL.
- ALL SIGN POSTS SHALL BE MADE OF A SQUARE TWO PIECE UNISTRUT TELESPEAR AND SHALL BE 12-GAUGE HOT DIPPED GALVANIZED STEEL.
- THE VILLAGE OF SHOREWOOD SIGN PANELS BE IN ACCORDANCE WITH THE LATEST MUTCD MANUAL. THE BASE COLOR SHALL BE DIAMOND GRADE WHITE WITH GREEN E.C. FILM LETTERING AND SHALL VARY IN LENGTH ACCORDING TO THE STREET NAME. THE VILLAGE OF SHOREWOOD LOGO SHALL BE ON THE LEFT SIDE OF THE SIGN AND SHALL BEGIN 3 INCHES FROM THE END OF THE BLADE. THE LETTERING SHALL BEGIN 2 INCHES FROM THE LOGO AND END 3 INCHES FROM THE END OF THE BLADE.

F.A.U. RTE.	SECTION	COUNTY	TOTAL SHEETS	SHEET NO.
*	09-00027-00-RS	WILL	13	2
STA.	TO STA.			
FED. ROAD DIST. NO.	ILLINOIS	FED AID PROJECT ARA-M-9003(526)		
C-91-727-09				

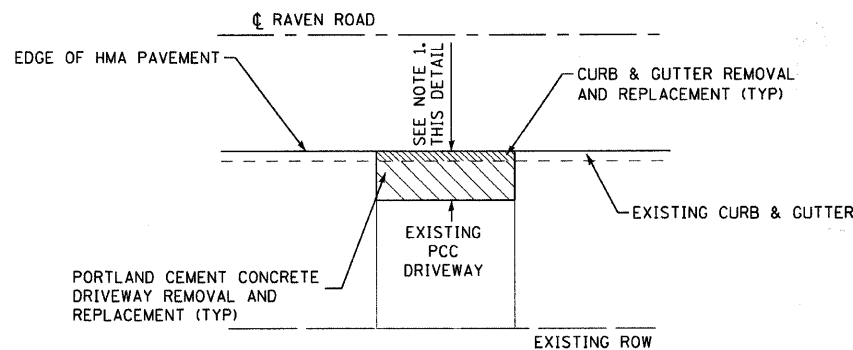
*FAU 0375 SOUTH RAVEN ROAD
CONTRACT NO. 63326

INDEX OF SHEETS

SHEET NO.	TITLE
1	COVER SHEET
2	INDEX OF SHEETS, HIGHWAY STANDARDS, DETAILS AND GENERAL NOTES
3	SUMMARY OF QUANTITIES AND SCHEDULE OF QUANTITIES
4	TYPICAL SECTIONS AND HMA MIXTURE REQUIREMENTS
5-6	PLAN SHEETS
7	DISTRICT 1 DETAIL - BD-08 DETAILS FOR FRAMES AND LIDS ADJUSTMENT WITH MILLING
8	DISTRICT 1 DETAIL - BD-24 CURB OR CURB & GUTTER REMOVAL & REPLACEMENT
9	DISTRICT 1 DETAIL - BD-32 BUTT JOINTS AND HMA TAPER DETAILS
10	DISTRICT 1 DETAIL - TC-10 TRAFFIC CONTROL AND PROTECTION FOR SIDE ROADS, INTERSECTIONS, AND DRIVEWAYS
11	DISTRICT 1 DETAIL - TC-13 DISTRICT ONE TYPICAL PAVEMENT MARKINGS
12	DISTRICT 1 DETAIL - TC-18 SIGNING FOR FLAGGING OPERATIONS AT WORK ZONE OPENINGS
13	DISTRICT 1 DETAIL - TC-22 ARTERIAL ROAD INFORMATION SIGN

LEGEND

- BUTT JOINT OR DRIVEWAY BUTT JOINT
- DRAINAGE AND UTILITY STRUCTURES TO BE ADJUSTED
- MANHOLE



NOTES: 1. 4' MIN WHEN MATCHING EXISTING PCC DRIVEWAY

HMA DRIVEWAY DETAIL

NO SCALE

HIGHWAY STANDARDS

000001-05	STANDARD SYMBOLS, ABBREVIATIONS, AND PATTERNS
424001-05	CURB RAMPS FOR SIDEWALKS
442201-03	CLASS C AND D PATCHES
482011-03	HMA SHLD. STRIPS/SHLDS. WITH RESURFACING OR WIDENING AND RESURFACING PROJECTS
701501-05	URBAN LANE CLOSURE, 2L,2W, UNDIVIDED
701801-04	LANE CLOSURE MULTILANE 1W OR 2W CROSSWALK OR SIDEWALK CLOSURE
701901-01	TRAFFIC CONTROL DEVICES
780001-02	TYPICAL PAVEMENT MARKINGS

VILLAGE OF SHOREWOOD, ILLINOIS
FAU 0375 SOUTH RAVEN ROAD
RESURFACING IMPROVEMENTS

INDEX OF SHEETS, HIGHWAY STANDARDS,
DETAILS AND GENERAL NOTES

F.A.U. RTE.	SECTION	COUNTY	TOTAL SHEETS	SHEET NO.
*	09-00027-00-RS	WILL	13	2
FED. ROAD DIST. NO.	ILLINOIS	CONTRACT NO. 63326		
		FED. AID PROJECT		

SCALE: NONE

STA. TO STA.



USER NAME	#USER#	DESIGNED	- JCH	REVISED	- PER IDOT 11-23-09
FILE NAME	090303-GenNotes.rvt	DRAWN	- BCD	REVISED	-
PLOT DATE	11/23/2009	CHECKED	- NJP	REVISED	-
		DATE	- 7-24-09	REVISED	-

SUMMARY OF QUANTITIES

CODE NO.	PAY ITEM	UNIT	CONSTRUCTION CODE 1000 TOTAL QUANTITY
35101600	AGGREGATE BASE COURSE, TYPE B 4"	SQ YD	88
40600100	BITUMINOUS MATERIALS (PRIME COAT)	GALLON	1055
40600300	AGGREGATE (PRIME COAT)	TON	22
x 40600400	MIXTURE FOR CRACKS, JOINTS, AND FLANGEWAYS	TON	5
40600625	LEVELING BINDER (MACHINE METHOD), N50	TON	443
40600982	HOT-MIX ASPHALT SURFACE REMOVAL - BUTT JOINT	SQ YD	394
x 40603310	HOT-MIX ASPHALT SURFACE COURSE, MIX "C", N50	TON	886
x 42400200	PORTLAND CEMENT CONCRETE SIDEWALK 5 INCH	SQ FT	790
x 42400800	DETECTABLE WARNINGS	SQ FT	90
44000157	HOT-MIX ASPHALT SURFACE REMOVAL, 2"	SQ YD	10547
44000600	SIDEWALK REMOVAL	SQ FT	840
x 44001700	COMBINATION CONCRETE CURB AND GUTTER REMOVAL AND REPLACEMENT	FOOT	820
x 44201723	CLASS D PATCHES, TYPE IV, 6 INCH	SQ YD	391
67100100	MOBILIZATION	L SUM	1
70102620	TRAFFIC CONTROL AND PROTECTION, STANDARD 701501	L SUM	1
70102640	TRAFFIC CONTROL AND PROTECTION, STANDARD 701801	L SUM	1
* 78000200	THERMOPLASTIC PAVEMENT MARKING - LINE 4"	FOOT	3800
* 78000400	THERMOPLASTIC PAVEMENT MARKING - LINE 6"	FOOT	540
* 78000600	THERMOPLASTIC PAVEMENT MARKING - LINE 12"	FOOT	18
* 78000650	THERMOPLASTIC PAVEMENT MARKING - LINE 24"	FOOT	96
x X0322256	TEMPORARY INFORMATIONAL SIGNING	SQ FT	52
x XX003435	PORTLAND CEMENT CONCRETE DRIVEWAY REMOVAL AND REPLACEMENT	SQ YD	112
x Z0017400	DRAINAGE AND UTILITY STRUCTURES TO BE ADJUSTED	EACH	13

* INDICATES SPECIALTY ITEM
 x INDICATES NON-STANDARD ITEM COVERED BY SPECIAL PROVISION

**COMBINATION
 CONCRETE CURB
 AND GUTTER REMOVAL
 AND REPLACEMENT**

STATION		LENGTH
7+40	RT	5
9+04	RT	20
9+68	LT	40
10+32	RT	30
12+54	LT	25
12+80	RT	20
13+24	RT	50
13+30	LT	10
15+26	RT	20
16+32	LT	50
16+70	RT	30
16+90	LT	50
17+06	RT	10
18+02	LT	25
18+53	LT	25
18+70	RT	20
18+96	RT	25
19+75	LT	70
19+94	RT	25
22+27	LT	25
22+36	RT	25
24+70	RT	35
25+62	LT	30
25+96	RT	25
26+12	LT	20
27+16	RT	35
27+65	RT	35
27+80	RT	20
27+80	LT	20
TOTAL = 820 FT		

STRUCTURE SCHEDULE

STATION	O/S	DRAINAGE & UTILITY STRUCTURES TO BE ADJUSTED
9+18	21' RT	T1 FRAME OPEN LID
9+84	21' RT	T1 FRAME OPEN LID
10+08	43' LT	T1 FRAME CLOSED LID
10+16	32' LT	T1 FRAME OPEN LID
10+21	26' LT	T1 FRAME OPEN LID
12+62	21' LT	T1 FRAME OPEN LID
13+46	21' RT	T1 FRAME OPEN LID
16+92	21' RT	T1 FRAME OPEN LID
16+93	33' LT	T1 FRAME CLOSED LID
17+03	21' LT	T1 FRAME OPEN LID
22+31	21' LT	T1 FRAME OPEN LID
22+55	21' RT	T1 FRAME OPEN LID
27+87	21' RT	T1 FRAME OPEN LID
27+92	21' LT	T1 FRAME OPEN LID
TOTAL = 13 EACH		

**PORTLAND CEMENT
 CONCRETE DRIVEWAY
 REMOVAL AND
 REPLACEMENT**

STATION		AREA SQ FT	AREA SQ YD
16+85	RT	100	11.1
18+14	LT	68	7.6
18+92	LT	88	9.8
19+09	RT	104	11.6
19+92	LT	112	12.4
20+06	RT	96	10.7
20+31	LT	80	8.9
22+43	LT	96	10.7
22+48	RT	88	9.8
25+76	RT	88	9.8
26+25	LT	80	8.9
TOTAL = 112.0 SY			

F.A.U. RTE.	SECTION	COUNTY	TOTAL SHEETS	SHEET NO.
09-00027-00-RS	WILL		13	3
STA.		TO STA.		
FED. ROAD DIST. NO.	ILLINOIS	FED AID PROJECT		
C-91-727-09		ARA-M-9003(526)		

*FAU 0375 SOUTH RAVEN ROAD
 CONTRACT NO. 63326

SIDEWALK REPAIRS

STATION		SIDEWALK REMOVAL SQ FT	PCC SIDEWALK 5 INCH SQ FT	DETECTABLE WARNING
10+30	LT	52	52	6
10+30	RT	56	56	6
12+81	RT	34		
12+85	RT	44	44	6
13+25	RT	96	96	12
13+35	LT	16	66	6
16+46	LT	34		
16+46	LT	52	52	6
16+96	LT	68	68	6
17+07	LT	34		
17+11	LT	42	42	6
17+11	RT	16	66	6
27+19	RT	48		
27+19	RT	66	66	6
27+66	RT	116	116	12
27+76	LT	66	66	12
TOTALS =		840 SF	790 SF	90 SF

CLASS D PATCHES, TYPE IV 6 INCH

STATION	STATION		LENGTH FT	WIDTH FT	AREA SQ FT	AREA SQ YD
7+53	7+90	LT	37	7	259	28.8
9+90	10+05	LT	52	15	780	86.7
13+70	14+00	LT	30	15	450	50.0
14+00	14+40	LT	40	15	600	66.7
17+10	17+35	RT	25	21	525	58.3
19+30	19+60	RT	30	15	450	50.0
21+42	21+72	RT	30	15	450	50.0
TOTAL = 391.0 SY						

COPYRIGHT © 2009 BY BAXTER & WOODMAN, INC.
 #PLTDRV48
 STATE OF ILLINOIS - PROFESSIONAL DESIGN FIRM
 No. - BR 11/23/2009
 E:\Marketing\SHRMD\090303-Raven_LAPP\CADD\SURVEY\DRAWINGS\DWG\090303-S000.BHT
 4/8/2009 3:49:39 PM



USER NAME = #USER#	DESIGNED - JCH	REVISED - PER IDOT 11-23-09
FILE NAME = 090303-S000.bht	DRAWN - BCD	REVISED -
PLOT DATE = 11/23/2009	CHECKED - NJP	REVISED -
	DATE - 7-24-09	REVISED -

**VILLAGE OF SHOREWOOD, ILLINOIS
 FAU 0375 SOUTH RAVEN ROAD
 RESURFACING IMPROVEMENTS**

SUMMARY AND SCHEDULE OF QUANTITIES

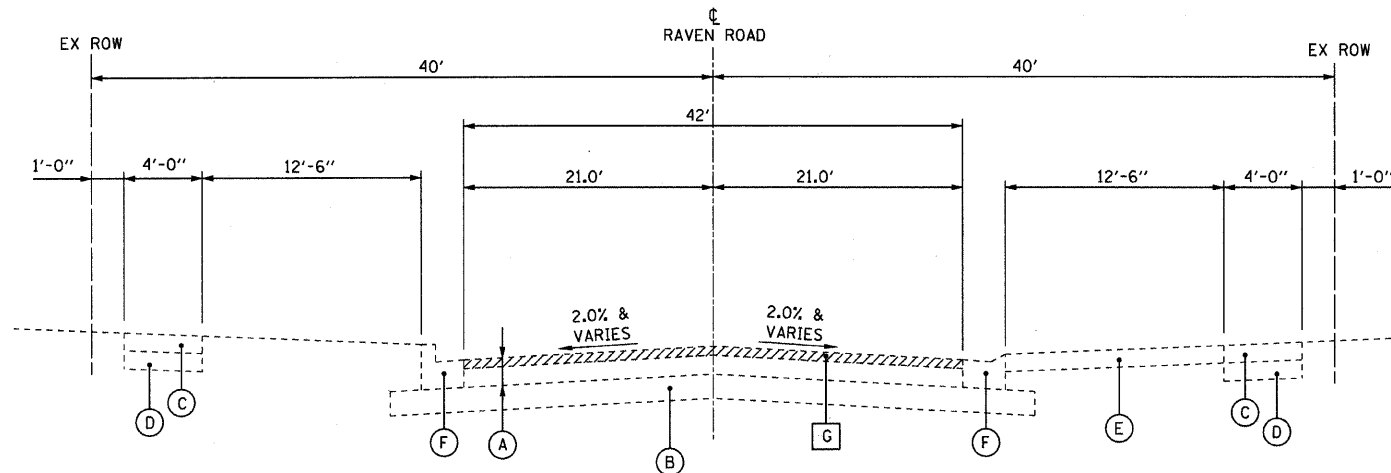
SCALE: NONE

STA. TO STA.

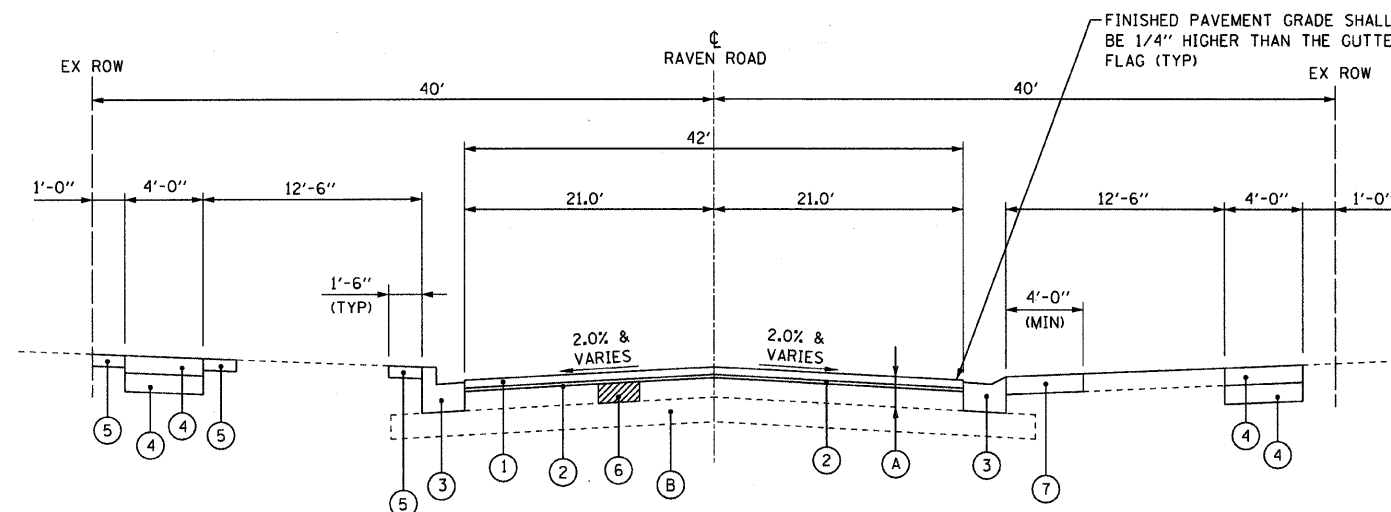
F.A.U. RTE.	SECTION	COUNTY	TOTAL SHEETS	SHEET NO.
09-00027-00-RS	WILL		13	3
FED. ROAD DIST. NO.		CONTRACT NO. 63326		
C-91-727-09		ILLINOIS FED. AID PROJECT		

F.A.U. RTE.	SECTION	COUNTY	TOTAL SHEETS	SHEET NO.
* 09-00027-00-RS		WILL	13	4
STA.	TO STA.			
FED. ROAD DIST. NO. C-91-727-09	ILLINOIS	FED AID PROJECT ARA-M-9003(526)		

*FAU 0375 SOUTH RAVEN ROAD
CONTRACT NO. 63326



EXISTING TYPICAL SECTION
RAVEN ROAD
STA. 0+08 TO STA. 47+57



PROPOSED TYPICAL SECTION
RAVEN ROAD
STA. 0+08 TO STA. 47+57

- EXISTING LEGEND**
- (A) HOT-MIX ASPHALT PAVEMENT (VARIES 4.5" - 5.5")
 - (B) AGGREGATE BASE COURSE (VARIES 7.5" - 8.5")
 - (C) PCC SIDEWALK
 - (D) AGGREGATE BASE COURSE (UNDER SIDEWALK)
 - (E) DRIVEWAY
 - (F) COMBINATION CONCRETE CURB AND GUTTER
 - (G) HOT MIX ASPHALT SURFACE REMOVAL, 2"

- PROPOSED LEGEND**
- (1) HOT-MIX ASPHALT SURFACE COURSE, MIX "C", N50 - 1 1/2"
 - (2) LEVELING BINDER (MACHINE METHOD), N50 - 3/4"
 - (3) COMBINATION CONCRETE CURB AND GUTTER REMOVAL AND REPLACEMENT (AS DETERMINED BY THE ENGINEER)
 - (4) SIDEWALK REMOVAL
PCC SIDEWALK, 5-INCH
AGGREGATE BASE COURSE TYPE B, 4"
(AS DETERMINED BY THE ENGINEER)
 - (5) PARKWAY RESTORATION (INCIDENTAL TO COMBINATION CONCRETE CURB AND GUTTER AND PCC SIDEWALK, 5-INCH)
 - (6) CLASS D PATCHES, TYPE I - IV, 6-INCH
 - (7) DRIVEWAY REMOVAL AND REPLACEMENT (AS DETERMINED BY THE ENGINEER)
 - (8) MIXTURE FOR CRACKS, JOINTS AND FLANGWAYS

HOT-MIX ASPHALT MIXTURE REQUIREMENTS

NOTE: CONTRACTOR SHALL MILL BEFORE PATCHING

ITEM	AIR VOIDS @ Ndes
RESURFACING	
HOT-MIX ASPHALT SURFACE COURSE, MIX "C", N50 (IL 9.5 mm), 1 1/2"	4% @ 50 Gyr
LEVELING BINDER (MACHINE METHOD), N50; 3/4"	4% @ 50 Gyr
PATCHING	
CLASS D PATCHES (HMA BINDER IL-19mm); TYPE I-IV - 6 INCH	4% @ 70 Gyr

- THE UNIT WEIGHT USED TO CALCULATE ALL HOT-MIX ASPHALT SURFACES MIXTURE IS 112 LBS/SQ YD/IN.
- THE "AC TYPE" FOR POLYMERIZED HMA MIXES SHALL BE "SBS/SBR PG 70-22 AND FOR NON-POLYMERIZED HMA THE "AC TYPE" SHALL BE "PG 64-22" UNLESS MODIFIED BY DISTRICT ONE SPECIAL PROVISIONS." FOR "PERCENT OF RAP" SEE DISTRICT ONE SPECIAL PROVISIONS.

COPYRIGHT © 2009 BY BAXTER & WOODMAN, INC. #PLTDIV#
 STATE OF ILLINOIS - PROFESSIONAL DESIGN FIRM
 BAXTER & WOODMAN, INC. 11/23/2009
 4882CC 11/23/2009
 C:\MORRIS\SRM\090303-Raven_LAPP\CADD-SURVEY\DRAWINGS\090303-TYP.dwg



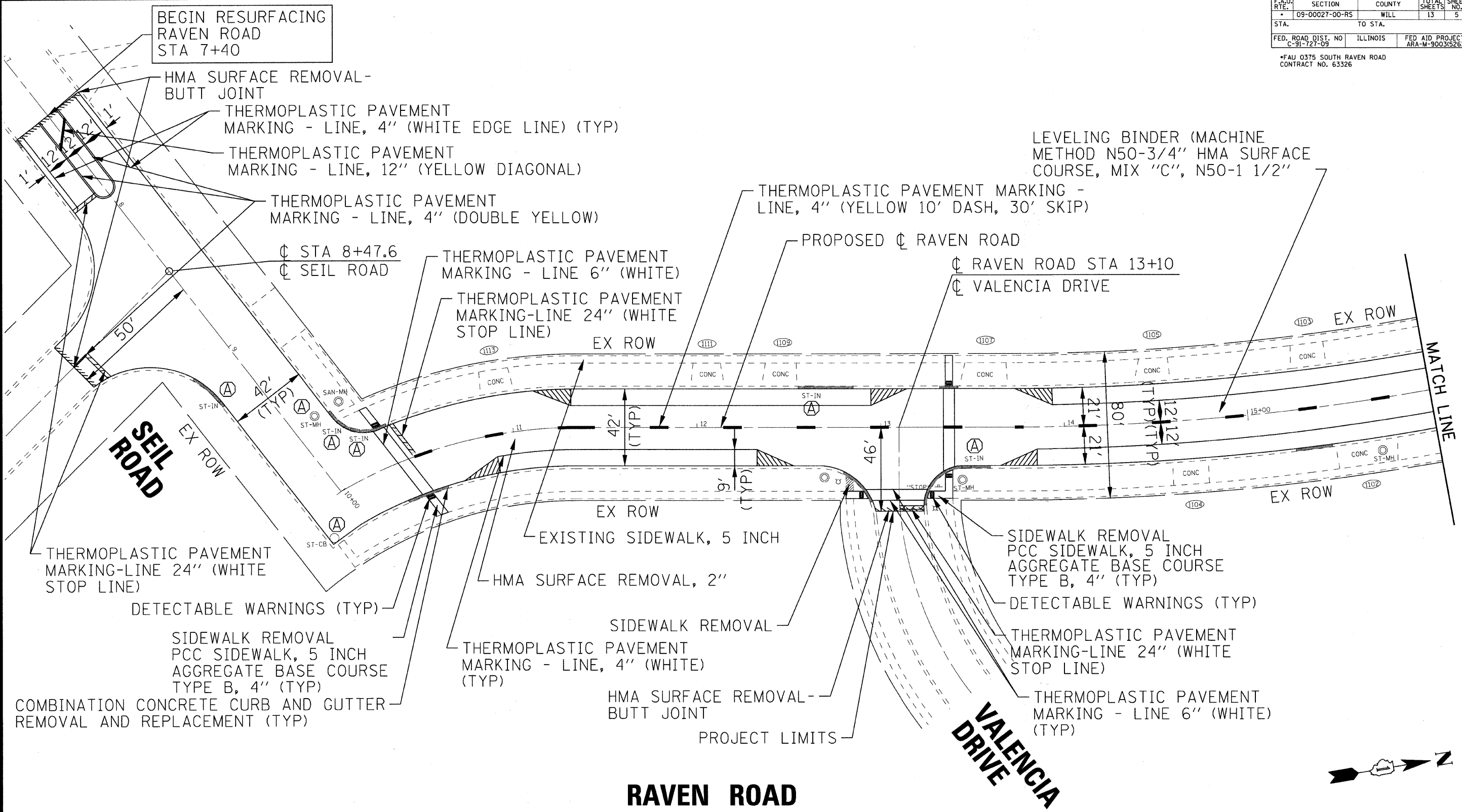
USER NAME = #USER#	DESIGNED - JGH	REVISED - PER IDOT 11-23-09
FILE NAME = 090303-TYP.dwg	DRAWN - BCD	REVISED -
PLOT DATE = 11/23/2009	CHECKED - NJP	REVISED -
	DATE - 7-24-09	REVISED -

VILLAGE OF SHOREWOOD, ILLINOIS
FAU 0375 SOUTH RAVEN ROAD
RESURFACING IMPROVEMENTS

TYPICAL SECTIONS AND	
HMA MIXTURE REQUIREMENTS	
SCALE: NONE	STA. TO STA.

F.A.U. RTE.	SECTION	COUNTY	TOTAL SHEETS	SHEET NO.
* 09-00027-00-RS		WILL	13	4
FED. ROAD DIST. NO.	ILLINOIS	CONTRACT NO. 63326		
		FED. AID PROJECT		

F.A. RTE.	SECTION	COUNTY	TOTAL SHEETS	SHEET NO.
09-00027-00-RS	WILL		13	5
STA.	TO STA.			
FED. ROAD DIST. NO.	ILLINOIS	FED AID PROJECT		
C-91-727-09		ARA-M-9003(526)		
*FAU Q375 SOUTH RAVEN ROAD CONTRACT NO. 63326				



RAVEN ROAD

VALENCIA DRIVE

COPYRIGHT © 2009, BY BAXTER & WOODMAN, INC.
 STATE OF ILLINOIS - PROFESSIONAL DESIGN FIRM
 LICENSE NO. 184-00121, EXPIRES 4/30/2011
 488ccc 11/23/2009 15:01:01 AM

Baxter & Woodman
 Crystal Lake, Illinois 815.459.1200
 Burlington, Wisconsin 262.763.7834
 Waukegan, Illinois 708.476.8090
 DeKalb, Illinois 815.787.3111
 Oreganville, Illinois 847.235.5080
 Chicago, Illinois 312.678.0050
 Plainfield, Illinois 815.809.7425

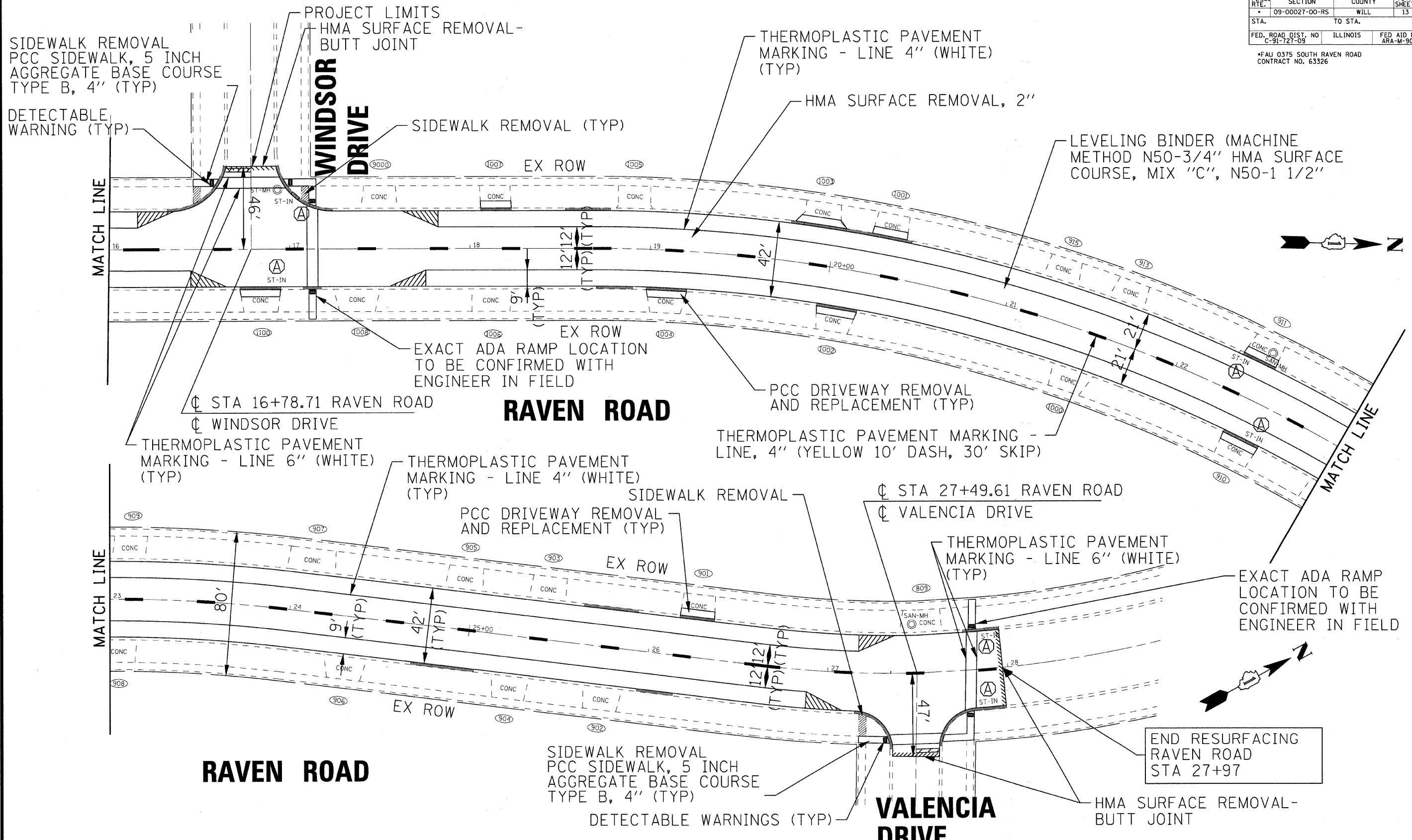
USER NAME = #USER#	DESIGNED - JGH	REVISD - PER IDOT 11-23-09
FILE NAME = 090303-Plan01.sht	DRAWN - BCD	REVISD -
DATE = 07-10-09	CHECKED - NJP	REVISD -
	DATE - 07-10-09	REVISD -

VILLAGE OF SHOREWOOD, ILLINOIS
RAVEN ROAD
RESURFACING IMPROVEMENTS

RESURFACING PLAN	
SCALE: SCALE: 1"=50'	STA. 7+00 TO STA. 16+00

F.A. RTE.	SECTION	COUNTY	TOTAL SHEETS	SHEET NO.
09-00027-00-RS	WILL		13	5
FED. ROAD DIST. NO.	ILLINOIS	FED. AID PROJECT		
		ARA-M-9003(526)		
CONTRACT NO. 63326				

F.A.U. RTE.	SECTION	COUNTY	TOTAL SHEETS	SHEET NO.
09-00027-00-RS	WILL	WILL	13	6
STA.	TO STA.			
FED. ROAD DIST. NO.	ILLINOIS	FED. AID PROJECT		
C-91-127-05		ARA-M-9003(526)		
*FAU 0375 SOUTH RAVEN ROAD CONTRACT NO. 63326				



COPYRIGHT © 2009, BY BAYTER & WOODMAN, INC.
 STATE OF ILLINOIS - PROFESSIONAL DESIGN FIRM
 LICENSE NO. - 184-00121 - EXPIRES 4/30/2011
 4886000
 11/23/2009 11:52:41 AM
 I:\Moketna\SHRWD\090303-Raven_LAPP\CADD-SURVEY\DRAWINGS\DCNS\090303-Plan02.sht

Baxter & Woodman
 Crystal Lake, Illinois 815.459.1280
 Burlington, Wisconsin 262.763.7834
 Mokena, Illinois 708.478.2090
 DeKalb, Illinois 815.787.3111
 Oregonside, Illinois 847.225.0088
 Chicago, Illinois 312.578.0050
 Plainfield, Illinois 815.809.7425

USER NAME = #USER#	DESIGNED - JGH	REVISED - PER IDOT 11-23-09
FILE NAME = 090303-Plan02.sht	DRAWN - BCD	REVISED -
PLLOT DATE = 11/23/2009	CHECKED - NJP	REVISED -
	DATE = 07-10-09	REVISED -

VILLAGE OF SHOREWOOD, ILLINOIS
RAVEN ROAD
RESURFACING IMPROVEMENTS

SCALE: 1"=50'	STA. 16+00	TO STA. 28+00
---------------	------------	---------------

F.A. RTE.	SECTION	COUNTY	TOTAL SHEETS	SHEET NO.
09-00027-00-RS	WILL	WILL	13	6
FED. ROAD DIST. NO.	CONTRACT NO. 63326			
	ILLINOIS FED. AID PROJECT			

F.A.U. RTE.	SECTION	COUNTY	TOTAL SHEETS	SHEET NO.
*	09-00027-00-RS	WILL	13	7
STA.	TO STA.			
FED. ROAD DIST. NO	ILLINOIS	FED AID PROJECT		
C-91-727-09		ARA-M-9003(526)		

*FAU 0375 SOUTH RAVEN ROAD
CONTRACT NO. 63326

CONSTRUCTION PROCEDURES

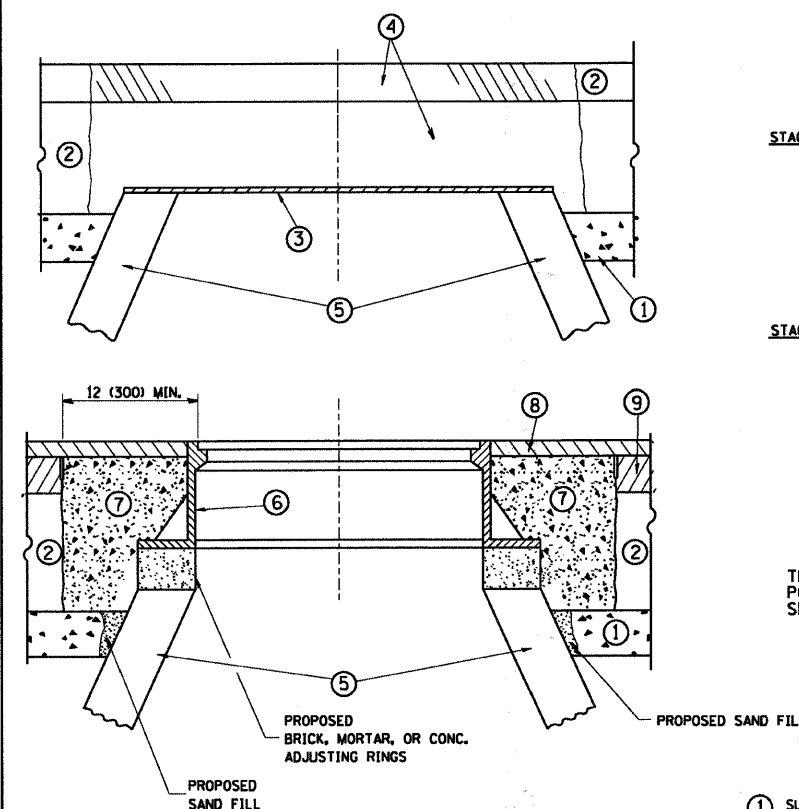
STAGE 1 (BEFORE PAVEMENT MILLING)

- A) REMOVE A MINIMUM OF 12 (300) OF THE PAVEMENT FROM AROUND THE STRUCTURE.
- B) REMOVE THE EXISTING FRAME AND LID FROM THE STRUCTURE.
- C) COVER THE STRUCTURE OPENING WITH A 36 (900) DIAMETER METAL PLATE.
- D) BACKFILL WITH CRUSHED STONE AND A MINIMUM 1/2 (40) THICK HMA SURFACE MIX APPROVED BY THE ENGINEER.

STAGE 2 (AFTER PAVEMENT MILLING)

- A) REMOVE THE HMA SURFACE MIX AND CRUSHED STONE.
- B) INSTALL THE FRAME AND LID; ADJUST THE FRAME TO ITS FINAL SURFACE ELEVATION.
- C) THE SURROUNDING SPACE SHALL BE FILLED WITH CLASS SI CONCRETE, OR HMA SURFACE COURSE OR HMA BINDER COURSE TO THE ELEVATION OF THE SURFACE OF THE EXISTING BASE COURSE OR THE BINDER COURSE.

THE PROCEDURE EXPLAINED ABOVE SHALL CONFORM TO THE APPLICABLE PORTIONS OF SECTIONS 353, 406, 602, AND 603 OF THE STANDARD SPECIFICATIONS.



LEGEND

- ① SUB-BASE GRANULAR MATERIAL
- ② EXISTING PAVEMENT
- ③ 36 (900) DIAMETER METAL PLATE
- ④ PROPOSED CRUSHED STONE AND HMA SURFACE MIX
- ⑤ EXISTING STRUCTURE
- ⑥ FRAME AND LID (SEE NOTES)
- ⑦ CLASS SI CONCRETE, HMA SURFACE COURSE OR HMA BINDER COURSE
- ⑧ PROPOSED HMA SURFACE COURSE
- ⑨ PROPOSED HMA BINDER COURSE

LOCATION OF STRUCTURES:

THE CONTRACTOR WILL BE REQUIRED TO KEEP A RECORD OF THE LOCATIONS OF THE BURIED STRUCTURES ACCORDING TO THE STATION AND DISTANCE LEFT OR RIGHT OF THE CENTERLINE OF PAVEMENT. UPON COMPLETION OF THE WORK, THE CONTRACTOR WILL DELIVER THE RECORD TO THE ENGINEER.

BASIS OF PAYMENT: THIS WORK WILL BE PAID FOR AT THE CONTRACT UNIT PRICE PER EACH FOR "FRAMES AND LIDS TO BE ADJUSTED, SPECIAL"

NEW FRAMES AND LIDS, WHEN SPECIFIED, WILL BE PAID FOR SEPARATELY.

NOTES:

EXISTING BROKEN FRAMES AND LIDS SHALL BE REMOVED AND DISPOSED OF BY THE CONTRACTOR AND SHALL BE REPLACED AS DIRECTED BY THE ENGINEER. REPLACEMENT FRAMES AND LIDS WILL BE PAID FOR IN ACCORDANCE WITH ARTICLE 109.04 OF THE STANDARD SPECIFICATIONS UNLESS A SEPARATE PAY ITEM HAS BEEN PROVIDED.

IF THE EXISTING LIDS ARE OPEN, THE FRAME WILL BE ADJUSTED TO THE ELEVATION OF THE MILLED PAVEMENT SURFACE PRIOR TO THE MILLING OPERATION. THE FRAME WILL NOT BE REMOVED AND COVERED BY THE METAL PLATE.

CITY OF CHICAGO CASTINGS ARE THE PROPERTY OF THE CITY AND THE CONTRACTOR SHALL NOTIFY THE CITY FOR REMOVAL AND DISPOSITION OF THE CASTINGS.

THE METAL PLATE USED TO COVER THE STRUCTURE SHALL REMAIN THE PROPERTY OF THE CONTRACTOR.

WHEN STRUCTURES ARE TO BE ADJUSTED OR RECONSTRUCTED, THE LOWERING AND RAISING OF THE FRAMES AND LIDS WILL NOT BE PAID FOR SEPARATELY BUT WILL BE INCLUDED IN THE COST OF THE CORRESPONDING PAY ITEM.

DETAILS FOR FRAMES AND LIDS ADJUSTMENT WITH MILLING

ALL DIMENSIONS ARE IN INCHES (MILLIMETERS) UNLESS OTHERWISE SHOWN

FILE NAME =	USER NAME = goglionobt	DESIGNED - R. SHAH	REVISED - R. SHAH 03-10-95
W:\diststd\22x34\bd08.dgn		DRAWN -	REVISED - A. ABBAS 03-21-97
	PLOT SCALE = 50.0000' / IN.	CHECKED -	REVISED - R. WIEDEMAN 05-14-04
	PLOT DATE = 1/4/2008	DATE - 10-25-94	REVISED - R. BORO 01-01-07

**STATE OF ILLINOIS
DEPARTMENT OF TRANSPORTATION**

**DETAILS FOR
FRAMES AND LIDS ADJUSTMENT WITH MILLING**

SCALE: NONE SHEET NO. 1 OF 1 SHEETS STA. TO STA.

F.A.U. RTE.	SECTION	COUNTY	TOTAL SHEETS	SHEET NO.
*	09-00027-00-RS	WILL	13	7
BD600-03 (BD-8)		CONTRACT NO. 63326		
FED. ROAD DIST. NO. 1 ILLINOIS FED. AID PROJECT				

F.A.U. RTE.	SECTION	COUNTY	TOTAL SHEETS	SHEET NO.
*	09-00027-00-RS	WILL	13	8
STA.	TO STA.			
FED. ROAD DIST. NO	ILLINOIS	FED AID PROJECT		
C-91-727-09		ARA-M-9003(526)		

*FAU 0375 SOUTH RAVEN ROAD
CONTRACT NO. 63326

VARIABLE - TO MEET EXISTING DIMENSIONS AND FIELD CONDITIONS (SEE NOTE ②)

PROP. CONC. CURB OR CURB AND GUTTER REPLACEMENT IN ACCORDANCE WITH STATE STANDARD 606001. (SEE NOTE ②)

SAW CUT FULL DEPTH - INCLUDED IN THE COST OF SIDEWALK, DRIVEWAY OR MEDIAN SURFACE REMOVAL PAY ITEM.

PROPOSED SIDEWALK, DRIVEWAY PAVEMENT, MEDIAN SURFACE OR SALT TOLERANT SOD AND TOP SOIL, 4" (100) SOD RESTORATION (SEE NOTE ①).

SUITABLE BACKFILL MATERIAL (INCLUDED IN THE COST OF CURB OR CURB AND GUTTER REMOVAL AND REPLACEMENT)

PROPOSED 3/4" (20) PREFORMED EXPANSION JOINT AT CONCRETE SIDEWALKS, DRIVEWAYS, AND MEDIANS. (INCLUDED IN THE COST OF CURB OR CURB AND GUTTER REMOVAL AND REPLACEMENT.)

UNSUITABLE SUB-BASE MATERIAL TO BE REMOVED, IF DIRECTED BY THE ENGINEER, SHALL BE REPLACED WITH EITHER SUB-BASE GRANULAR MATERIAL, TYPE B OR ADDITIONAL THICKNESS OF CONCRETE.

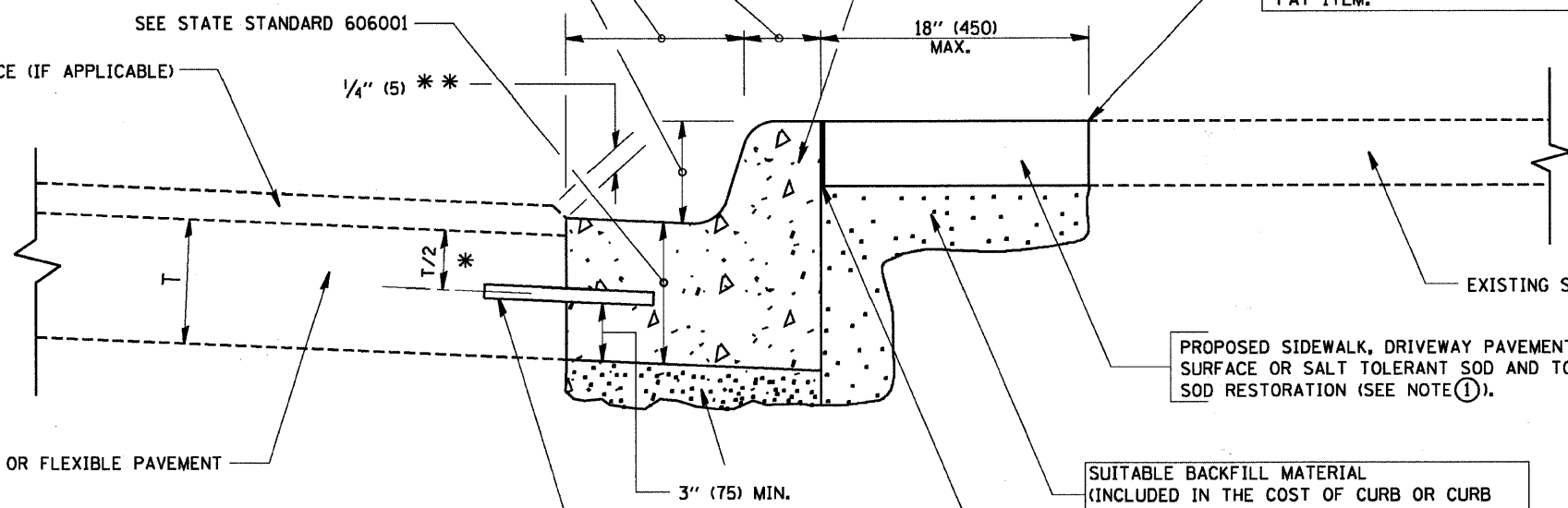
REMOVAL AND REPLACEMENT 4" (100) OR LESS IS INCLUDED IN THE COST OF CURB OR CURB AND GUTTER REMOVAL AND REPLACEMENT.

REMOVAL AND REPLACEMENT IN EXCESS OF 4" (100) WILL BE PAID FOR IN ACCORDANCE WITH ARTICLE 109.04 OF THE STANDARD SPECIFICATIONS.

PROPOSED #6 (20) EPOXY COATED TIE BARS 24" (600) LONG AT 24" (600) CENTERS WILL NOT BE PAID FOR SEPARATELY. DELETE EPOXY COATED TIE BARS IF EXISTING TIE BARS ARE USABLE AS DETERMINED BY THE ENGINEER. (SEE NOTE ③).

BASIS OF PAYMENT:
THIS WORK WILL BE PAID FOR AT THE CONTRACT UNIT PRICE PER FOOT (METER) FOR "CURB REMOVAL AND REPLACEMENT" OR "COMBINATION CONCRETE CURB AND GUTTER REMOVAL AND REPLACEMENT".

EXISTING OR PROPOSED HMA SURFACE (IF APPLICABLE)



EXISTING CONCRETE PAVEMENT, CONCRETE BASE COURSE OR FLEXIBLE PAVEMENT

- * 3" (75) MINIMUM FROM TOP AND BOTTOM OF THE CONCRETE PAVEMENT OR BASE COURSE.
- ** IF THE FINAL SURFACE OF THE PAVEMENT IS CONCRETE, THE GUTTER IS TO BE FLUSH WITH THE PAVEMENT.

NOTE: ① SIDEWALK, DRIVEWAY PAVEMENT OR MEDIAN SURFACE SHALL BE SIMILAR TO THE MATERIAL BEING REMOVED AND WILL BE PAID FOR SEPARATELY.

SALT TOLERANT SOD AND TOP SOIL, 4" (100) RESTORATION WILL NOT BE PAID FOR SEPARATELY, BUT SHALL BE INCLUDED IN THE COST OF CURB OR CURB AND GUTTER REMOVAL AND REPLACEMENT.

② CURB OR CURB AND GUTTER REPLACEMENT SHALL MATCH THE SHAPE OF THE EXISTING CURB OR CURB AND GUTTER UNLESS OTHERWISE SPECIFIED.

③ FOR CURB OR CURB AND GUTTER REMOVAL AND REPLACEMENT ADJACENT TO FLEXIBLE PAVEMENT DELETE EPOXY COATED TIE BARS.

④ LONGITUDINAL BARS, IF ENCOUNTERED IN THE EXISTING CURB OR CURB AND GUTTER, ARE NOT TO BE REPLACED. CUTTING AND REMOVING LONGITUDINAL BARS SHALL BE INCLUDED IN THE COST OF CURB OR CURB AND GUTTER REMOVAL AND REPLACEMENT.

⑤ THE COST OF HMA SURFACE REMOVAL IN THE EXISTING GUTTER FLAG SHALL BE INCLUDED IN THE COST OF THE CURB AND GUTTER REMOVAL AND REPLACEMENT.

⑥ THE REMOVAL AND REPLACEMENT OF THE EXISTING CURB OR CURB AND GUTTER SHALL BE DONE IN ACCORDANCE WITH THE APPLICABLE PORTIONS OF SECTION 440 AND 606 OF THE STANDARD SPECIFICATIONS.

⑦ THE LOCATIONS OF REMOVAL AND REPLACEMENT OF EXISTING CURB OR CURB AND GUTTER SHALL BE DETERMINED BY THE RESIDENT ENGINEER AT THE TIME OF CONSTRUCTION.

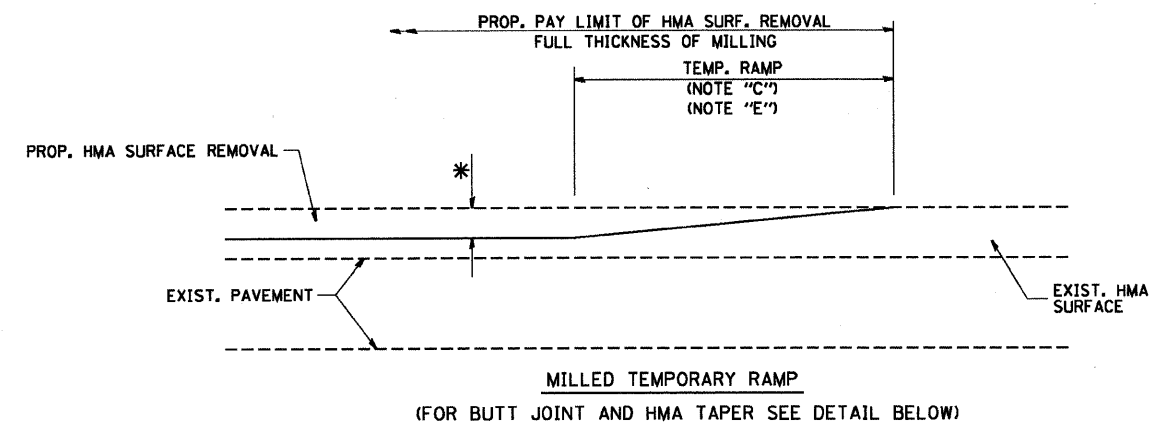
CURB OR CURB AND GUTTER REMOVAL AND REPLACEMENT

ALL DIMENSIONS ARE IN INCHES (MILLIMETERS) UNLESS OTHERWISE SHOWN.

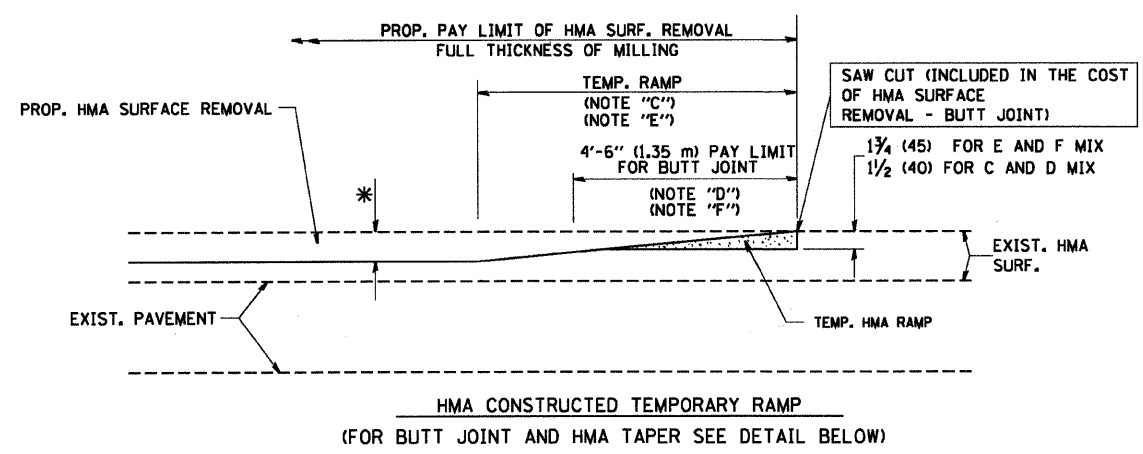
FILE NAME = W:\distratd\22x34\bd24.dgn	USER NAME = geglennobt	DESIGNED - A. HOUSEH	REVISED - R. SHAH 10-03-96	STATE OF ILLINOIS DEPARTMENT OF TRANSPORTATION	CURB OR CURB AND GUTTER REMOVAL AND REPLACEMENT	F.A.U. RTE. *	SECTION 09-00027-00-RS	COUNTY WILL	TOTAL SHEETS 13	SHEET NO. 8
PLOT SCALE = 5/8" = 1' IN.	CHECKED -	REVISED - A. ABBAS 03-21-97	REVISED - M. GOMEZ 01-22-01	SCALE: NONE	SHEET NO. 1 OF 1 SHEETS	STA.	TO STA.	BD600-06 (BD-24) CONTRACT NO. 63326		
PLOT DATE = 1/4/2008	DATE - 03-11-94	REVISED - R. BORO 01-01-07		FED. ROAD DIST. NO. 1 ILLINOIS FED. AID PROJECT						

F.A.U. RTE.	SECTION	COUNTY	TOTAL SHEETS	SHEET NO.
*	09-00027-00-RS	WILL	13	9
STA.		TO STA.		
FED. ROAD DIST. NO	ILLINOIS	FED AID PROJECT		
C-91-727-09		ARA-M-9003(526)		

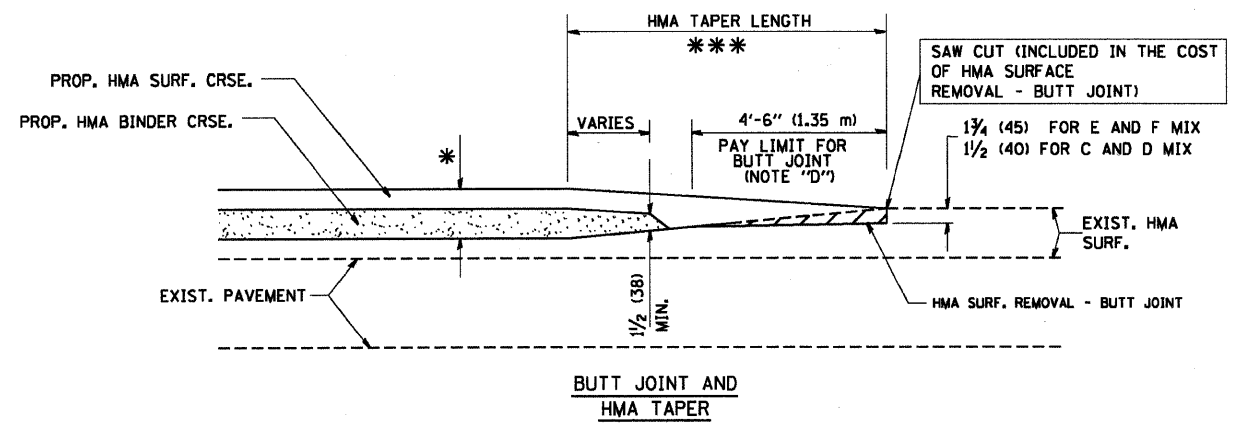
*FAU 0375 SOUTH RAVEN ROAD
CONTRACT NO. 63326



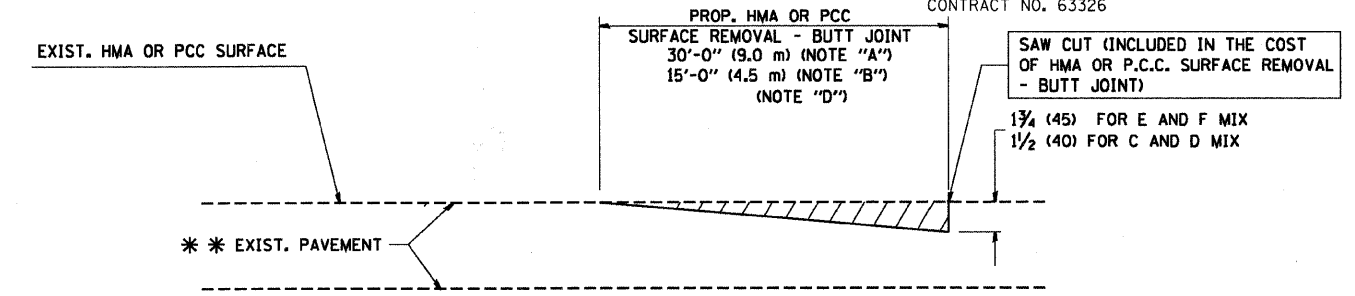
OPTION 1



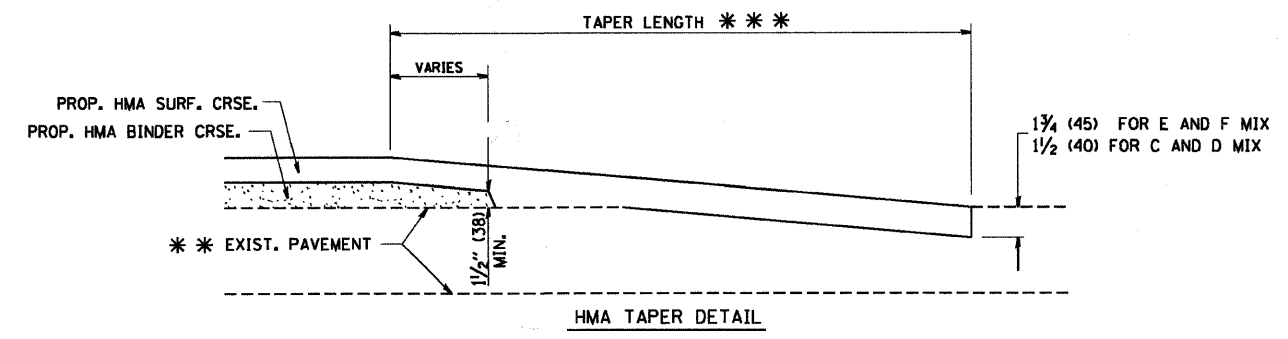
**OPTION 2
TYPICAL TEMPORARY RAMP**



**TYPICAL BUTT JOINT AND HMA TAPER
FOR MILLING AND RESURFACING**



BUTT JOINT DETAIL



HMA TAPER DETAIL

**TYPICAL BUTT JOINT AND HMA TAPER
FOR RESURFACING ONLY**

*** PC CONCRETE, HMA OR HMA RESURFACED PAVEMENT.

NOTES

- A: MAINLINE ROADWAYS AND MAJOR SIDE ROADS.
- B: MINOR SIDE ROADS.
- C: THE TEMP. RAMP SHALL BE CONSTRUCTED IMMEDIATELY UPON REMOVAL OF THE EXISTING HMA SURFACE.
- D: THE BUTT JOINT SHALL BE CONSTRUCTED IMMEDIATELY PRIOR TO PLACING THE PROPOSED HMA COURSES.
- E: TAPER THE TEMP. RAMP AT A RATE OF 3'-0" (900 mm) PER 1 INCH (25 mm) OF MILLING THICKNESS.
- F: INSTALLATION AND REMOVAL OF THE 4'-6" (1.35 m) TEMP. RAMP IS INCLUDED IN COST OF HMA SURFACE REMOVAL - BUTT JOINT
- G: SEE ARTICLE 406.08 AND 406.14 OF THE STANDARD SPECIFICATIONS FOR "HMA AND/OR PCC SURFACE REMOVAL, BUTT JOINT".
- * SEE TYPICAL SECTIONS FOR MILLING THICKNESS.
- *** 20'-0" (6.1 m) PER 1 (25) RESURFACING (NOTE "A")
10'-0" (3.0 m) PER 1 (25) RESURFACING (NOTE "B")

BASIS OF PAYMENT:

THE BUTT JOINT WILL BE PAID FOR AT THE CONTRACT UNIT PRICE PER SQUARE YARD (SQUARE METER) FOR "HOT-MIX ASPHALT SURFACE REMOVAL - BUTT JOINT" OR FOR "PORTLAND CEMENT CONCRETE SURFACE REMOVAL - BUTT JOINT".

ALL DIMENSIONS ARE IN INCHES (MILLIMETERS) UNLESS OTHERWISE SHOWN.

FILE NAME = W:\d1\statd\22x34\bd32.dgn	USER NAME = gaglionobt	DESIGNED - M. DE YONG	REVISED - R. SHAH 10-25-94
		DRAWN -	REVISED - A. ABBAS 03-21-97
		CHECKED -	REVISED - M. GOMEZ 04-06-01
		DATE - 06-13-90	REVISED - R. BORO 01-01-07

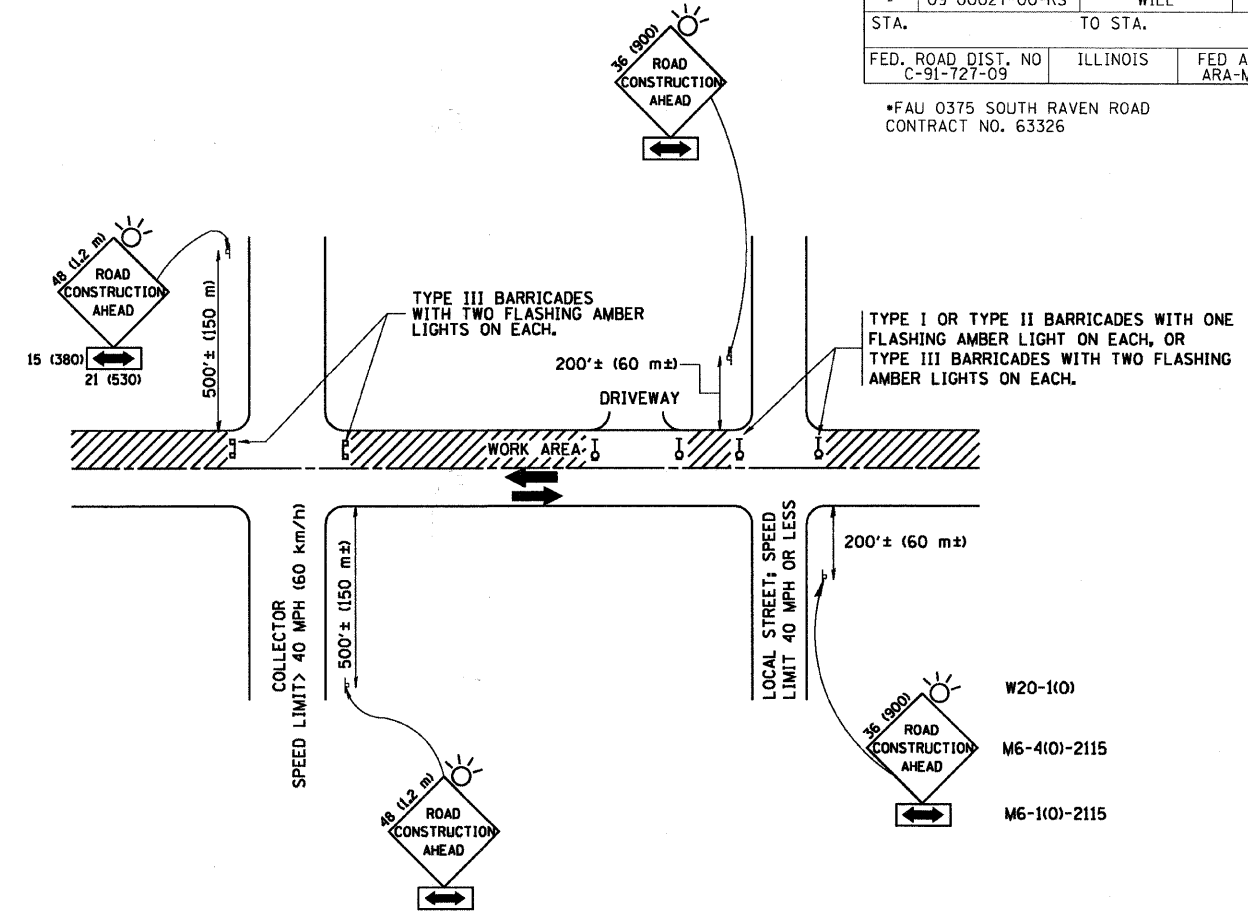
**STATE OF ILLINOIS
DEPARTMENT OF TRANSPORTATION**

BUTT JOINT AND HMA TAPER DETAILS	
SCALE: NONE	SHEET NO. 1 OF 1 SHEETS
STA.	TO STA.

F.A. RTE.	SECTION	COUNTY	TOTAL SHEETS	SHEET NO.
*	09-00027-00-RS	WILL	13	9
BD400-05 BD32		CONTRACT NO. 63326		
FED. ROAD DIST. NO. 1 ILLINOIS FED. AID PROJECT				

F.A.U. RTE.	SECTION	COUNTY	TOTAL SHEETS	SHEET NO.
* 09-00027-00-RS		WILL	13	10
STA.		TO STA.		
FED. ROAD DIST. NO	ILLINOIS	FED AID PROJECT		
C-91-727-09		ARA-M-9003(526)		

*FAU 0375 SOUTH RAVEN ROAD
CONTRACT NO. 63326



TRAFFIC CONTROL AND PROTECTION FOR SIDE ROADS, INTERSECTIONS, AND DRIVEWAYS

NOTES:

- A. FOR NO LANE RESTRICTION ON THE SIDE ROAD OR DRIVEWAYS**
 1. SIDE ROAD WITH A SPEED LIMIT OF 40 MPH (60 km/h) OR LESS AS SHOWN ON THE DRAWING AND AS DIRECTED BY THE ENGINEER:
 - a) ONE ROAD CONSTRUCTION AHEAD SIGN 36 x 36 (900x900) WITH A FLASHER AND FLAG MOUNTED ON IT APPROXIMATELY 200' (60 m) IN ADVANCE OF THE MAIN ROUTE.
 - b) THE CLOSED PORTION OF THE MAIN ROUTE SHALL BE PROTECTED BY BLOCKING WITH TYPE I, TYPE II OR TYPE III BARRICADES, 1/3 OF THE CROSS SECTION OF THE CLOSED PORTION.
 2. SIDE ROAD WITH A SPEED LIMIT GREATER THAN 40 MPH (60 km/h) AS SHOWN ON THE DRAWING AND AS DIRECTED BY THE ENGINEER:
 - a) ONE ROAD CONSTRUCTION AHEAD SIGN 48 x 48 (1.2 m x 1.2 m) WITH A FLASHER MOUNTED ON IT APPROXIMATELY 500' (150 m) IN ADVANCE OF THE MAIN ROUTE.
 - b) THE CLOSED PORTION OF THE MAIN ROUTE SHALL BE PROTECTED BY BLOCKING WITH TYPE III BARRICADES, 1/2 OF THE CROSS SECTION OF THE CLOSED PORTION.
 3. WHEN THE SIDE ROAD LIES BETWEEN THE BEGINNING OF THE MAINLINE SIGNING AND THE WORK ZONE, A SINGLE HEADED ARROW (M6-1) SHALL BE USED IN LIEU OF THE DOUBLE HEADED ARROW (M6-4).
- B. FOR A LANE CLOSURE ON A SIDE ROAD OR DRIVEWAY:**

USE APPLICABLE PORTIONS OF THE TYPICAL APPLICATION OF TRAFFIC CONTROL DEVICES (STD. 701501, STD. 701606 OR THE APPROPRIATE STANDARD). THE SPACING OF SIGNS AND BARRICADES SHALL BE ADJUSTED FOR FIELD CONDITIONS AS DIRECTED BY THE ENGINEER. THE DIRECTIONAL ARROW SHALL BE COVERED OR REMOVED WHEN NO LONGER CONSISTENT WITH THE SIDE ROAD LANE CLOSURE.
- C. ADVANCE WARNING SIGNS ARE TO BE OMITTED ON DRIVEWAY UNLESS OTHERWISE NOTED.**
- D. THE TRAFFIC CONTROL AND PROTECTION FOR SIDE ROADS, INTERSECTIONS, AND DRIVEWAYS SHALL BE INCIDENTAL TO THE COST OF SPECIFIED TRAFFIC CONTROL STANDARDS OR ITEMS.**

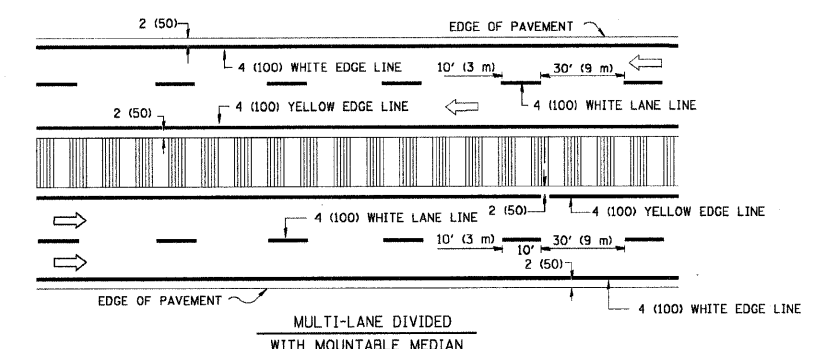
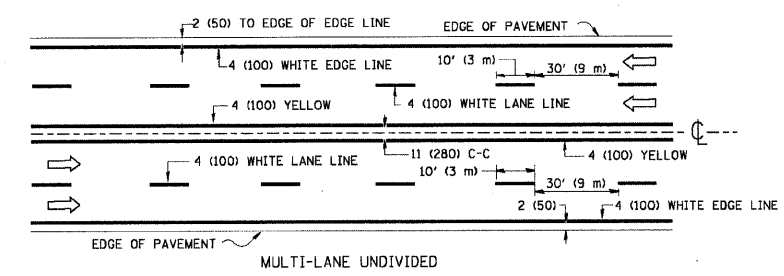
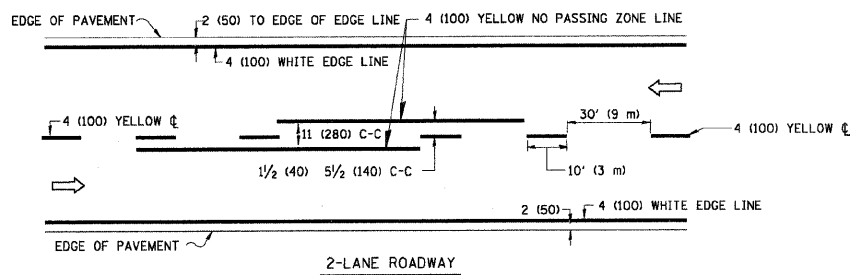
All dimensions are in millimeters (inches) unless otherwise shown.

FILE NAME =	USER NAME = gegl1enob1	DESIGNED - LHA	REVISED - J. OBERLE 10-18-95
W:\d1ststd\22x34\vol1&dgn		DRAWN -	REVISED - A. HOUSEH 03-06-96
	PLOT SCALE = 50.000 / IN.	CHECKED -	REVISED - A. HOUSEH 10-15-96
	PLOT DATE = 1/4/2008	DATE - 06-89	REVISED - T. RAMMACHER 01-06-00

**STATE OF ILLINOIS
DEPARTMENT OF TRANSPORTATION**

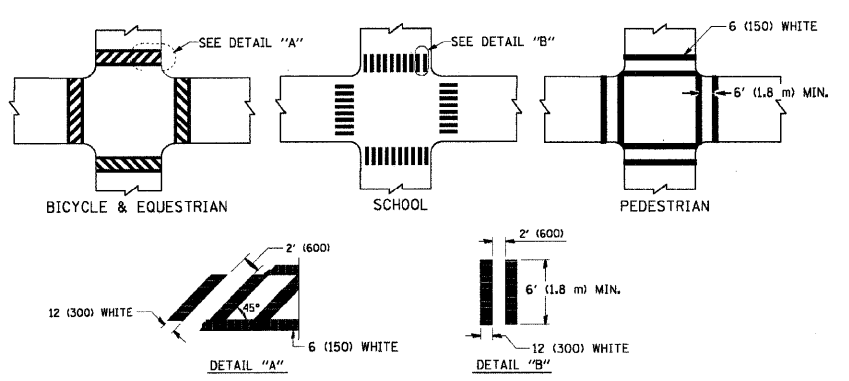
TRAFFIC CONTROL AND PROTECTION FOR SIDE ROADS, INTERSECTIONS, AND DRIVEWAYS			
SCALE: NONE	SHEET NO. 1 OF 1 SHEETS	STA.	TO STA.

F.A.U. RTE.	SECTION	COUNTY	TOTAL SHEETS	SHEET NO.
* 09-00027-00-RS		WILL	13	10
TC-10		CONTRACT NO. 63326		
FED. ROAD DIST. NO. 1		ILLINOIS FED. AID PROJECT		

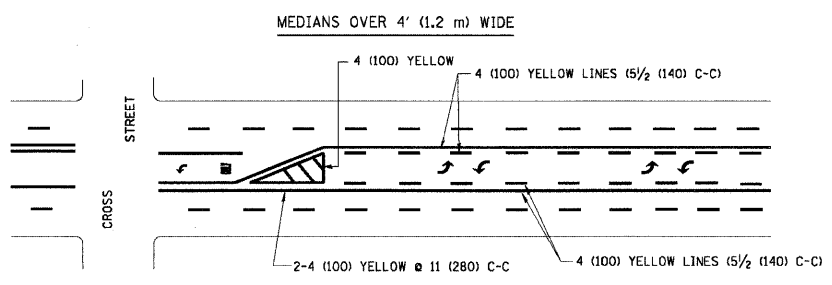
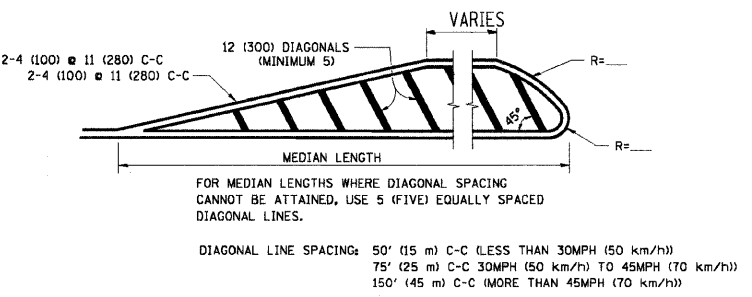
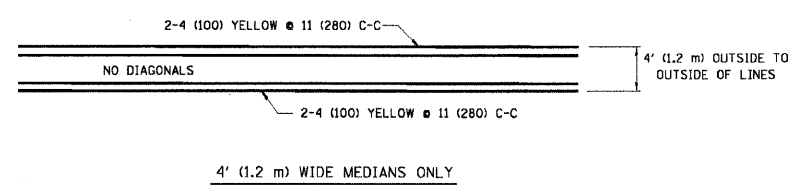


NOTE: MEDIANS WITH BARRIER CURB DO NOT REQUIRE AN EDGE LINE

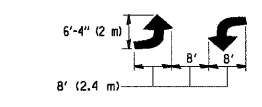
TYPICAL LANE AND EDGE LINE MARKING



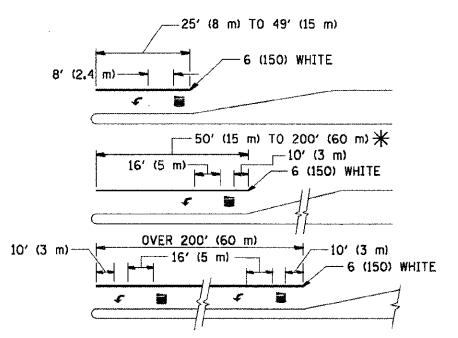
TYPICAL CROSSWALK MARKING



A MINIMUM OF TWO PAIRS OF TURN ARROWS SHALL BE USED, WHITE IN COLOR. ADDITIONAL PAIRS SHALL BE PLACED AT 200' (60 m) TO 300' (90 m) INTERVALS.



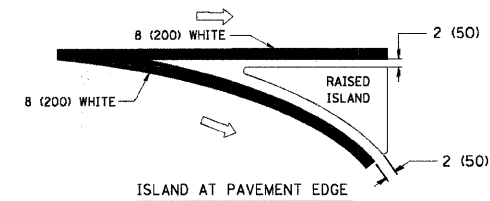
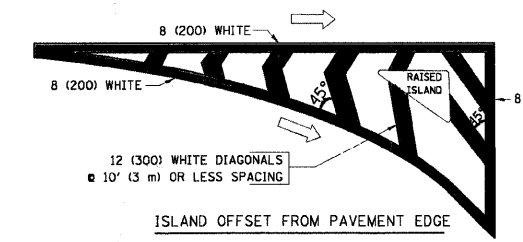
TYPICAL PAINTED MEDIAN MARKING



FULL SIZE LETTERS 8" (2.4 m) AND ARROWS SHALL BE USED. AREA = 15.6 SQ. FT. (1.5 m²) ONLY AREA = 20.8 SQ. FT. (1.9 m²)

* TURN LANES IN EXCESS OF 400' (120 m) IN LENGTH MAY HAVE AN ADDITIONAL SET OF ARROW - "ONLY" INSTALLED MIDWAY BETWEEN THE OTHER TWO SETS OF ARROW - "ONLY".

TYPICAL TURN LANE MARKING



TYPICAL ISLAND MARKING

TYPE OF MARKING	WIDTH OF LINE	PATTERN	COLOR	SPACING / REMARKS
CENTERLINE ON 2 LANE PAVEMENT	4 (100)	SKIP-DASH	YELLOW	10' (3 m) LINE WITH 30' (9 m) SPACE
CENTERLINE ON MULTI-LANE UNDIVIDED PAVEMENT	2 @ 4 (100)	SOLID	YELLOW	11 (280) C-C
NO PASSING ZONE LINES: FOR ONE DIRECTION FOR BOTH DIRECTIONS	4 (100) 2 @ 4 (100)	SOLID SOLID	YELLOW YELLOW	5 1/2 (140) C-C FROM SKIP-DASH CENTERLINE 11 (280) C-C OMIT SKIP-DASH CENTERLINE BETWEEN
LANE LINES	4 (100) 5 (125) ON FREEWAYS	SKIP-DASH SKIP-DASH	WHITE WHITE	10' (3 m) LINE WITH 30' (9 m) SPACE
DOTTED LINES (EXTENSIONS OF CENTER, LANE OR TURN LANE MARKINGS)	SAME AS LINE BEING EXTENDED	SKIP-DASH	SAME AS LINE BEING EXTENDED	2' (600) LINE WITH 6' (1.8 m) SPACE
EDGE LINES	4 (100)	SOLID	YELLOW-LEFT WHITE-RIGHT	OUTLINE MOUNTABLE MEDIANS IN YELLOW; EDGE LINES ARE NOT USED NEXT TO BARRIER CURB
TURN LANE MARKINGS	6 (150) LINE; FULL SIZE LETTERS & SYMBOLS 18" (2.4m)	SOLID	WHITE	SEE TYPICAL TURN LANE MARKING DETAIL
TWO WAY LEFT TURN MARKING	2 @ 4 (100) EACH DIRECTION 8' (2.4m) LEFT ARROW	SKIP-DASH AND SOLID IN PAIRS	YELLOW WHITE	10' (3 m) LINE WITH 30' (9 m) SPACE FOR SKIP-DASH; 5 1/2 (140) C-C BETWEEN SOLID LINE AND SKIP-DASH LINE SEE TYPICAL TWO-WAY LEFT TURN MARKING DETAIL
CROSSWALK LINES (PEDESTRIAN) A. DIAGONALS (BIKE & EQUESTRIAN) B. LONGITUDINAL BARS (SCHOOL)	2 @ 6 (150) 12 (300) @ 45° 12 (300) @ 90°	SOLID SOLID SOLID	WHITE WHITE WHITE	NOT LESS THAN 6' (1.8 m) APART 2' (600) APART SEE TYPICAL CROSSWALK MARKING DETAILS.
STOP LINES	24 (600)	SOLID	WHITE	PLACE 4' (1.2 m) IN ADVANCE OF AND PARALLEL TO CROSSWALK, IF PRESENT. OTHERWISE, PLACE AT DESIRED STOPPING POINT. PARALLEL TO CROSSROAD CENTERLINE, WHERE POSSIBLE
PAINTED MEDIANS	2 @ 4 (100) WITH 12 (300) DIAGONALS @ 45° NO DIAGONALS USED FOR 4' (1.2 m) WIDE MEDIANS	SOLID	YELLOW: TWO WAY TRAFFIC WHITE: ONE WAY TRAFFIC	11 (280) C-C FOR THE DOUBLE LINE SEE TYPICAL PAINTED MEDIAN MARKING.
GORE MARKING AND CHANNELIZING LINES	8 (200) WITH 12 (300) DIAGONALS @ 45°	SOLID	WHITE	DIAGONALS: 15' (4.5 m) C-C (LESS THAN 30MPH (50 km/h)) 20' (6 m) C-C 30MPH (50 km/h) TO 45MPH (70 km/h) 30' (9 m) C-C (OVER 45MPH (70 km/h))
RAILROAD CROSSING	24 (600) TRANSVERSE LINES; "RR" IS 6' (1.8 m) LETTERS; 16 (400) LINE FOR "X"	SOLID	WHITE	SEE STATE STANDARD 780001 AREA OF: "R"=3.6 SQ. FT. (0.33 m ²) EACH "X"=54.0 SQ. FT. (5.0 m ²)
SHOULDER DIAGONALS	12 (300) @ 45°	SOLID	WHITE - RIGHT YELLOW - LEFT	50' (15 m) C-C (LESS THAN 30MPH (50 km/h)) 75' (25 m) C-C (30 MPH (50 km/h) TO 45MPH (70 km/h)) 150' (45 m) C-C (OVER 45MPH (70 km/h))

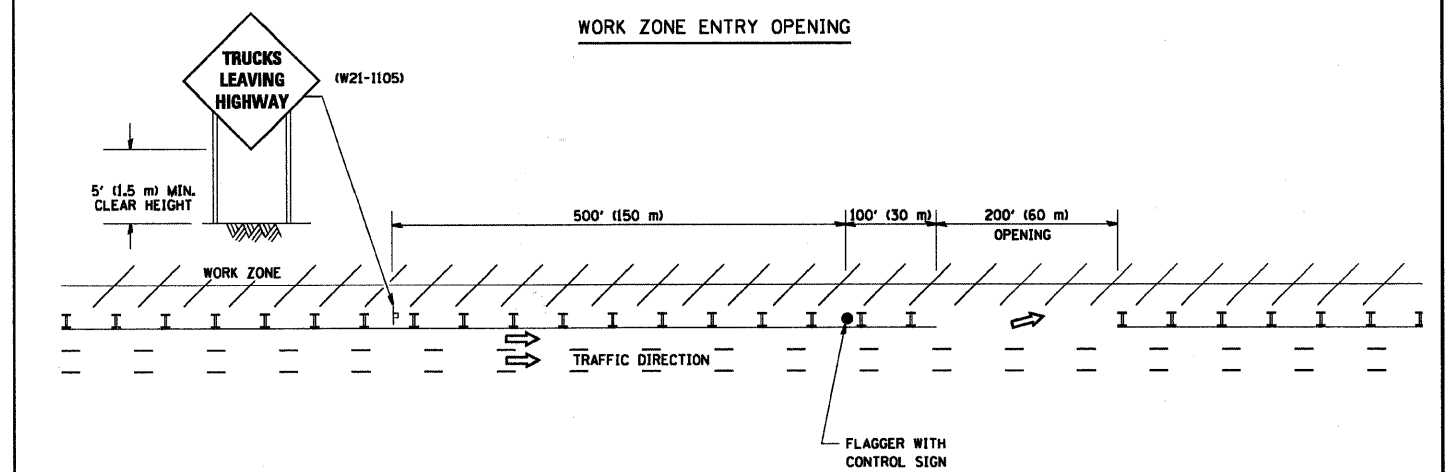
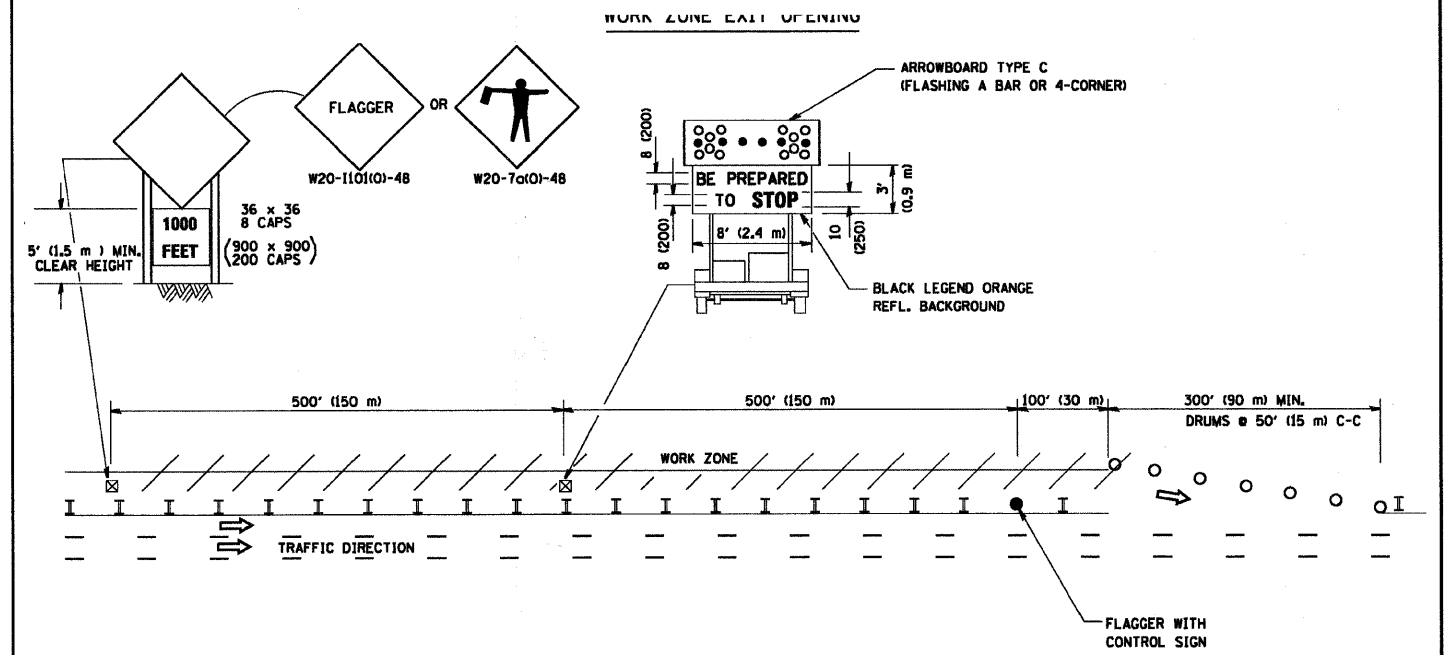
FOR FURTHER DETAILS ON PAVEMENT MARKING REFER TO STANDARD SPECIFICATIONS FOR ROAD AND BRIDGE CONSTRUCTION AND STATE STANDARD 780001.

All dimensions are in inches (millimeters) unless otherwise shown.

F.A.U. RTE.	SECTION	COUNTY	TOTAL SHEETS	SHEET NO.
* 09-00027-00-RS	WILL		13	12
STA.		TO STA.		
FED. ROAD DIST. NO. C-91-727-09	ILLINOIS	FED AID PROJECT ARA-M-9003(526)		

*FAU 0375 SOUTH RAVEN ROAD
CONTRACT NO. 63326

SIGNING FOR FLAGGING OPERATIONS AT WORK ZONE OPENINGS



NOTES:

1. The Arrowboard, the Flagger Ahead trailer mounted sign, and the Trucks Leaving Highway sign shall be removed or turned away from traffic and the exit and entry openings shall be closed when the flagging operation ceases.
2. Work Zone Exit Openings should be a minimum of one half mile apart.
3. Exiting the work zone at any place other than at a Work Zone Exit Opening will be prohibited.
4. All vehicles shall enter the work zone at entry openings, using their turn signals to warn motorists

ALL DIMENSIONS ARE IN INCHES (MILLIMETERS)
UNLESS OTHERWISE SHOWN

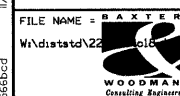
STATE OF ILLINOIS
DEPARTMENT OF TRANSPORTATION

SIGNING FOR FLAGGING OPERATIONS
AT WORK ZONE OPENINGS

SCALE: NONE SHEET NO. 1 OF 1 SHEETS STA. TO STA.

F.A.U. RTE.	SECTION	COUNTY	TOTAL SHEETS	SHEET NO.
* 09-00027-00-RS	WILL		13	12
TC-18		CONTRACT NO. 63326		
FED. ROAD DIST. NO. 1 ILLINOIS FED. AID PROJECT				

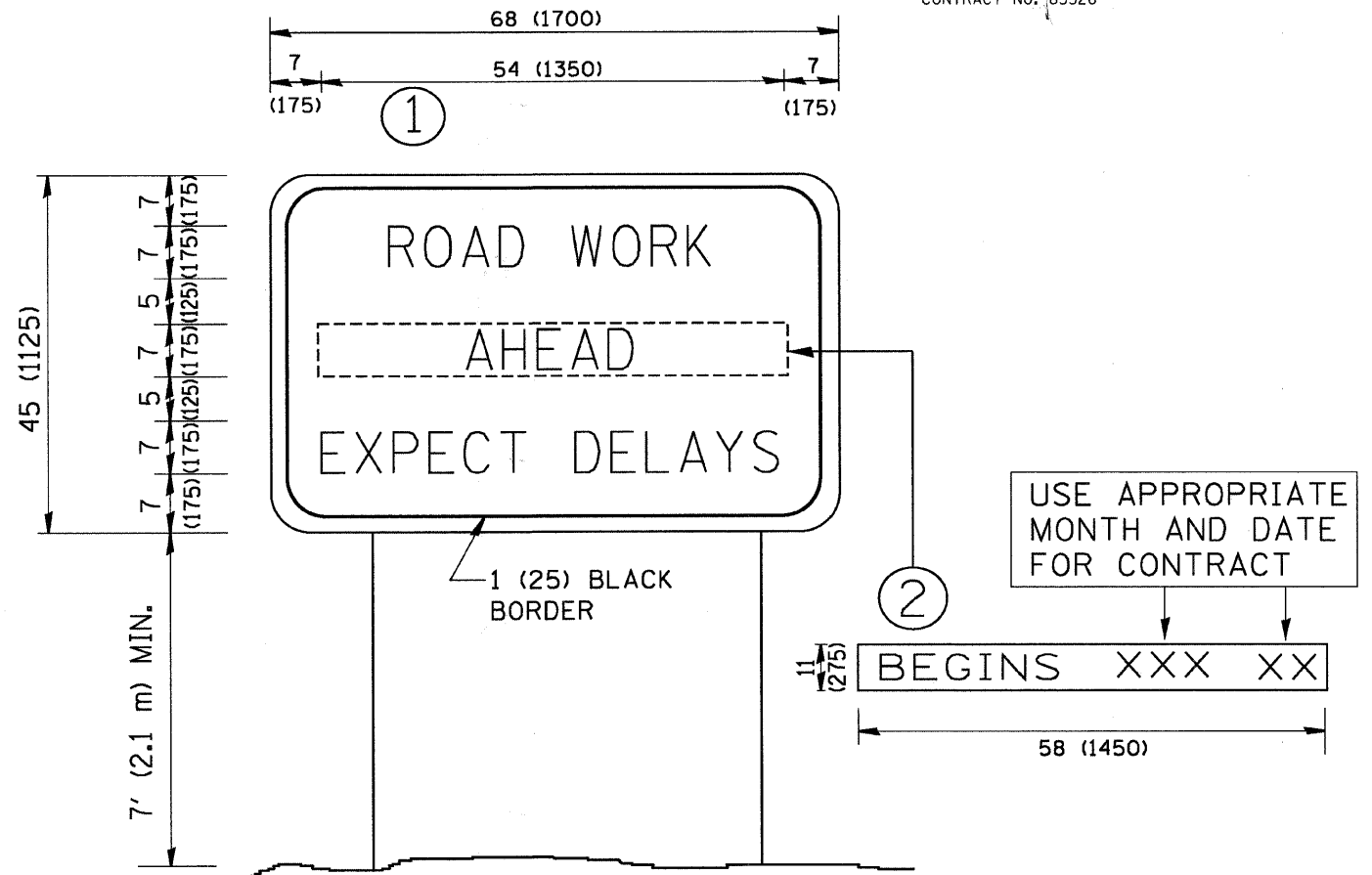
COPYRIGHT © 2009 BY BAXTER & WOODMAN, INC. #PLTORV48
 STATE OF ILLINOIS - PROFESSIONAL DESIGN FIRM
 5500 N. MILWAUKEE AVE. SUITE 200 MILWAUKEE, WI 53219
 TEL: 414-224-1200 FAX: 414-224-1201
 WWW.BANDW.COM



FILE NAME = BAXTER	USER NAME = gagliardi	DESIGNED -	REVISED - D.W.S. 08-98
W:\data\22		DRAWN -	REVISED - J.A.F. 04-03
		CHECKED -	REVISED - J.A.F. 02-06
		DATE -	REVISED - S.P.B. 01-07

F.A.U. RTE.	SECTION	COUNTY	TOTAL SHEETS	SHEET NO.
* 09-00027-00-RS	WILL		13	13
STA.		TO STA.		
FED. ROAD DIST. NO. C-91-727-09	ILLINOIS	FED AID PROJECT ARA-M-90031526		

*FAU 0375 SOUTH RAVEN ROAD
CONTRACT NO. 63326



NOTES:

1. USE BLACK LETTERING ON ORANGE BACKGROUND.
2. ERECT SIGNS IN ADVANCE OF THE LOCATION FOR THE "ROAD CONSTRUCTION AHEAD" SIGN AT LOCATIONS AS DIRECTED BY THE ENGINEER.
3. ERECT SIGN ① WITH INSTALLED PANEL ② ONE WEEK PRIOR TO THE START OF CONSTRUCTION.
4. REMOVE PANEL ② SOON AFTER THE START OF CONSTRUCTION.
5. SEE SPECIAL PROVISION FOR "TEMPORARY INFORMATION SIGNING" FOR ADDITIONAL INFORMATION.
6. ONE SIGN ASSEMBLY EQUALS 25.70 SQ. FT. (2.3 SQ. M.)
7. SHALL BE PAID FOR AS TEMPORARY INFORMATION SIGNING.

ALL DIMENSIONS ARE IN INCHES (MILLIMETERS)
UNLESS OTHERWISE SHOWN.

FILE NAME =	USER NAME = gegl1enob1
W:\diststd\22x34\to22.dgn	

DESIGNED -	REVISED - R. MIRS 09-15-97
DRAWN -	REVISED - R. MIRS 12-11-97
PLOT SCALE = 50.000' / IN.	REVISED - T. RAMMACHER 02-02-99
CHECKED -	REVISED - C. JUCIUS 01-31-07
PLOT DATE = 1/4/2008	

STATE OF ILLINOIS
DEPARTMENT OF TRANSPORTATION

ARTERIAL ROAD INFORMATION SIGN	
SCALE: NONE	SHEET NO. 1 OF 1 SHEETS
STA.	TO STA.

F.A.U. RTE.	SECTION	COUNTY	TOTAL SHEETS	SHEET NO.
* 09-00027-00-RS	WILL		13	13
TC-22		CONTRACT NO. 63326		
FED. ROAD DIST. NO. 1 ILLINOIS FED. AID PROJECT				