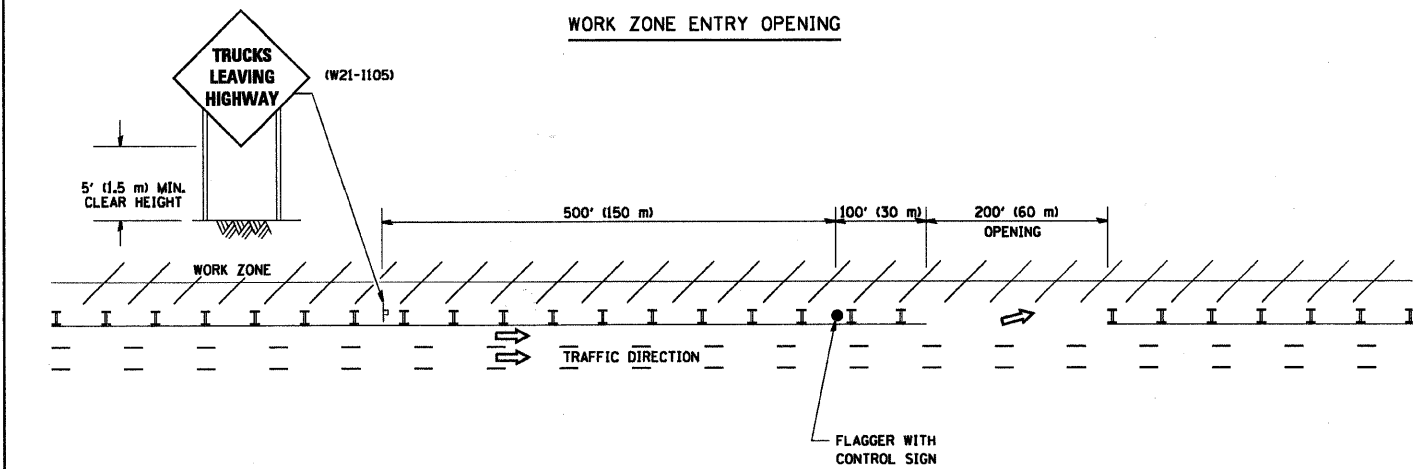
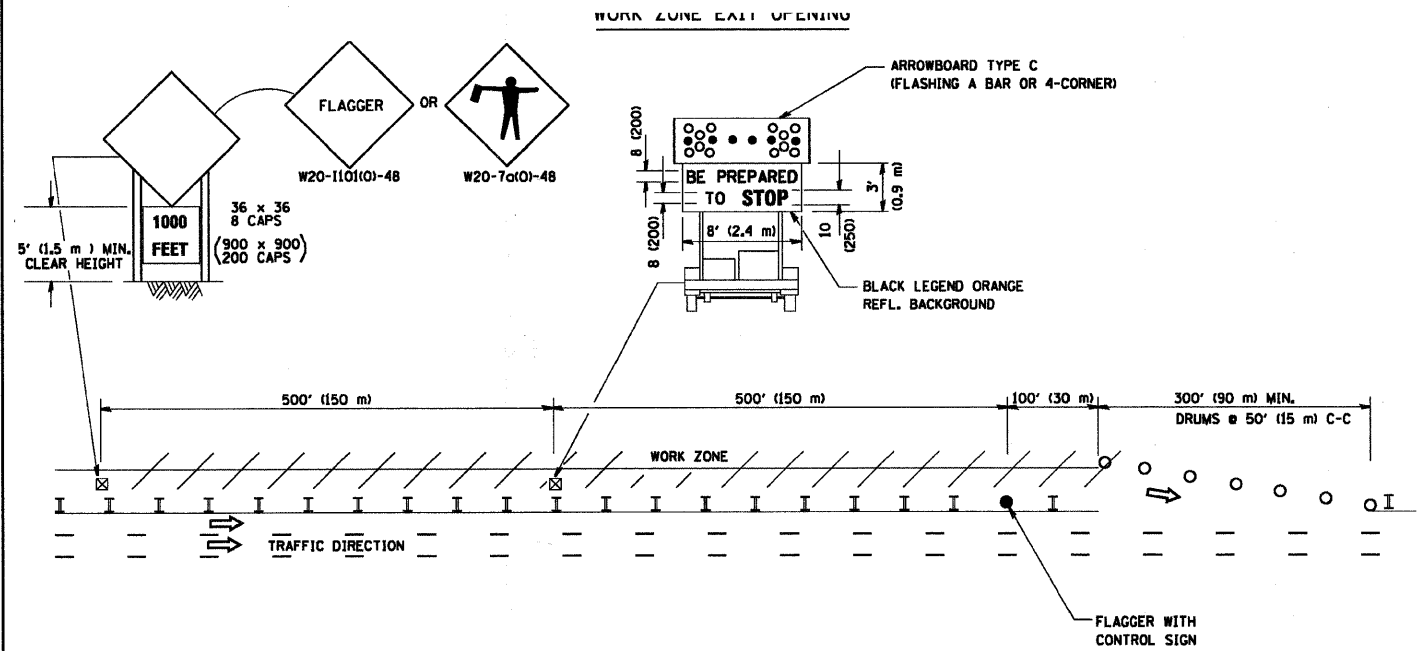


F.A.U. RTE.	SECTION	COUNTY	TOTAL SHEETS	SHEET NO.
*	09-00027-00-RS	WILL	13	12
STA.		TO STA.		
FED. ROAD DIST. NO	ILLINOIS	FED AID PROJECT		
C-91-727-09		ARA-M-9003(526)		

\*FAU 0375 SOUTH RAVEN ROAD  
CONTRACT NO. 63326

### SIGNING FOR FLAGGING OPERATIONS AT WORK ZONE OPENINGS



**NOTES:**

1. The Arrowboard, the Flagger Ahead trailer mounted sign, and the Trucks Leaving Highway sign shall be removed or turned away from traffic and the exit and entry openings shall be closed when the flagging operation ceases.
2. Work Zone Exit Openings should be a minimum of one half mile apart.
3. Exiting the work zone at any place other than at a Work Zone Exit Opening will be prohibited.
4. All vehicles shall enter the work zone at entry openings, using their turn signals to warn motorists.

ALL DIMENSIONS ARE IN INCHES (MILLIMETERS)  
UNLESS OTHERWISE SHOWN

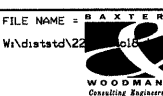
STATE OF ILLINOIS  
DEPARTMENT OF TRANSPORTATION

SIGNING FOR FLAGGING OPERATIONS  
AT WORK ZONE OPENINGS

F.A.U. RTE.	SECTION	COUNTY	TOTAL SHEETS	SHEET NO.
*	09-00027-00-RS	WILL	13	12
TC-18		CONTRACT NO. 63326		
FED. ROAD DIST. NO. 1 ILLINOIS FED. AID PROJECT				

SCALE: NONE SHEET NO. 1 OF 1 SHEETS STA. TO STA.

COPYRIGHT © 2009 BY BAXTER & WOODMAN, INC. #PLTDRV48  
 STATE OF ILLINOIS - PROFESSIONAL DESIGN FIRM  
 5500 S. WILSON AVENUE, SUITE 100, CHICAGO, IL 60632  
 TEL: 773.486.1200 FAX: 773.486.1201



FILE NAME = BAXTER	USER NAME = gagliardi	DESIGNED -	REVISED - D.W.S. 08-98
W:\d\stata\22		DRAWN -	REVISED - J.A.F. 04-03
		CHECKED -	REVISED - J.A.F. 02-06
		DATE -	REVISED - S.P.B. 01-07