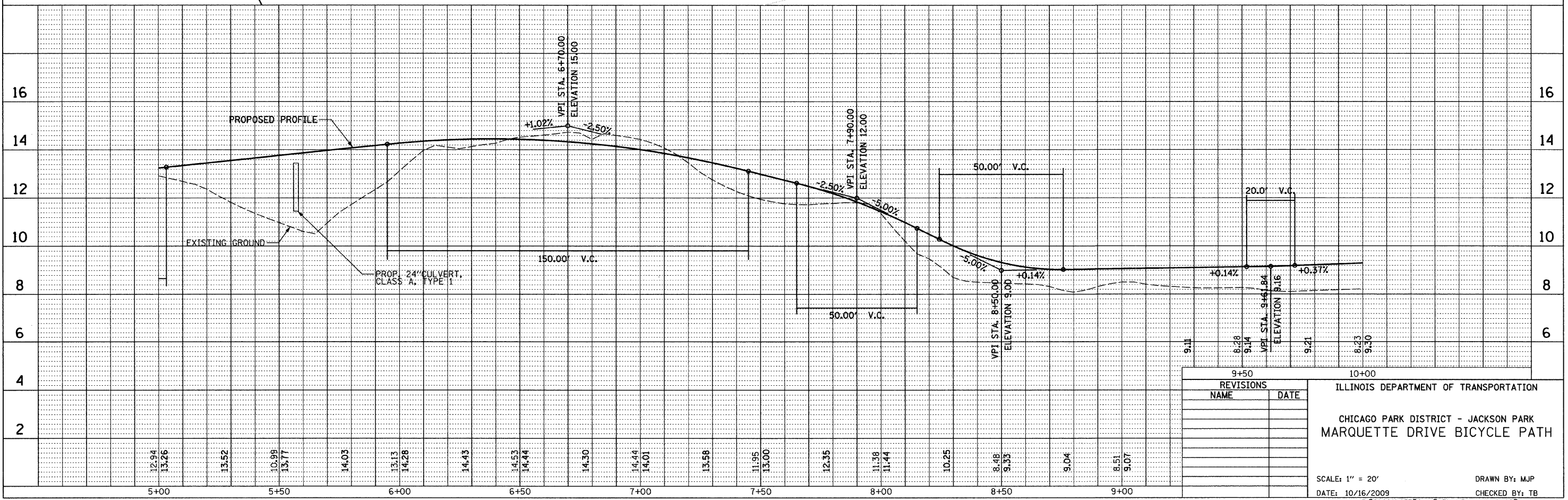
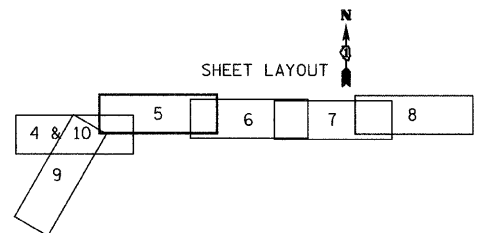
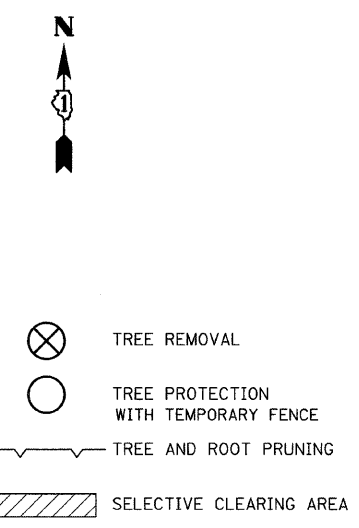
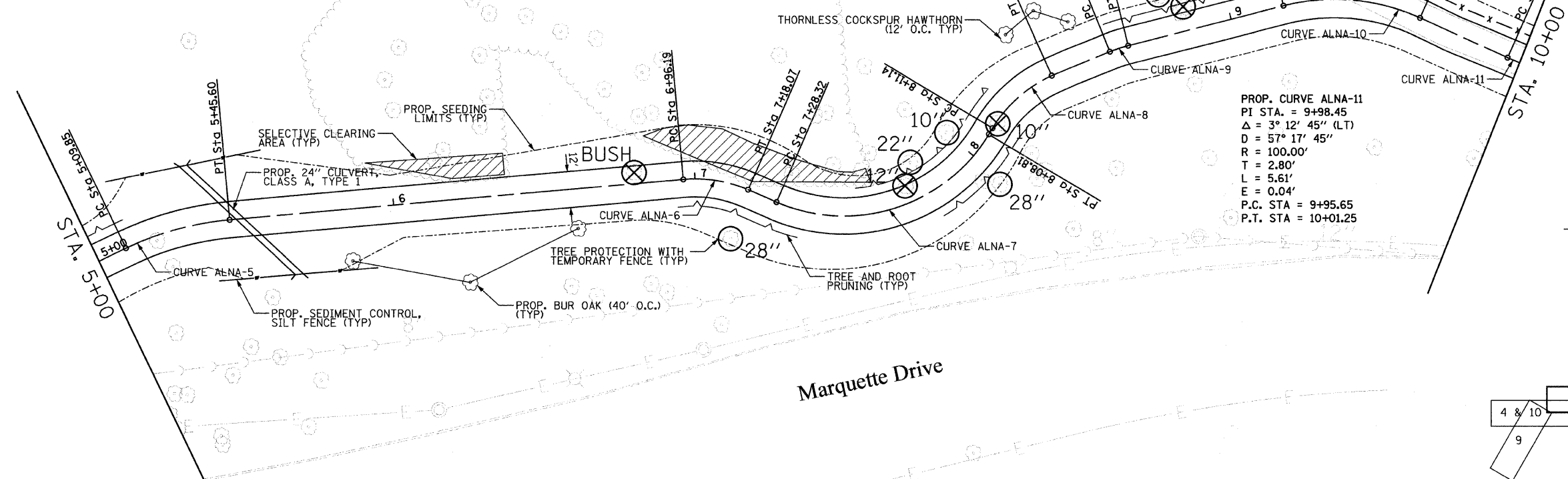


PROP. CURVE ALNA-5 PI STA. = 5+27.92 Δ = 20° 28' 56" (RT) D = 57' 17' 45" R = 100.00' T = 18.07' L = 35.75' E = 1.62' P.C. STA = 5+09.85 P.T. STA = 5+45.60	PROP. CURVE ALNA-6 PI STA. = 7+07.36 Δ = 28° 30' 06" (RT) D = 130° 13' 04" R = 44.00' T = 11.18' L = 21.89' E = 1.40' P.C. STA = 6+96.19 P.T. STA = 7+18.07	PROP. CURVE ALNA-7 PI STA. = 7+77.30 Δ = 82° 20' 48" (LT) D = 102° 18' 50" R = 56.00' T = 48.98' L = 80.48' E = 18.40' P.C. STA = 7+28.32 P.T. STA = 8+08.81	PROP. CURVE ALNA-8 PI STA. = 8+24.88 Δ = 34° 40' 26" (RT) D = 130° 13' 04" R = 44.00' T = 13.74' L = 26.63' E = 2.09' P.C. STA = 8+11.14 P.T. STA = 8+37.77	PROP. CURVE ALNA-9 PI STA. = 8+61.74 Δ = 8° 15' 21" (RT) D = 130° 13' 04" R = 44.00' T = 3.18' L = 6.34' E = 0.11' P.C. STA = 8+58.56 P.T. STA = 8+64.90	PROP. CURVE ALNA-10 PI STA. = 9+41.80 Δ = 38° 18' 44" (RT) D = 83° 02' 15" R = 69.00' T = 23.97' L = 46.14' E = 4.04' P.C. STA = 9+17.83 P.T. STA = 9+63.97
--	--	---	--	---	--

F.A.I. RTE.	SECTION	COUNTY	TOTAL SHEETS	SHEET NO.
	01-P4019-05-BT	COOK	23	7
STA.	TO STA.			
FED. ROAD DIST. NO.	ILLINOIS	FED. AID PROJECT		



REVISIONS	
NAME	DATE

ILLINOIS DEPARTMENT OF TRANSPORTATION  
 CHICAGO PARK DISTRICT - JACKSON PARK  
 MARQUETTE DRIVE BICYCLE PATH  
 SCALE: 1" = 20'  
 DATE: 10/16/2009  
 DRAWN BY: MJP  
 CHECKED BY: TB