

F.A. RTE.	SECTION	COUNTY	TOTAL SHEETS	SHEET NO.
VAR.	2009-127 SG	VARIOUS	11	1

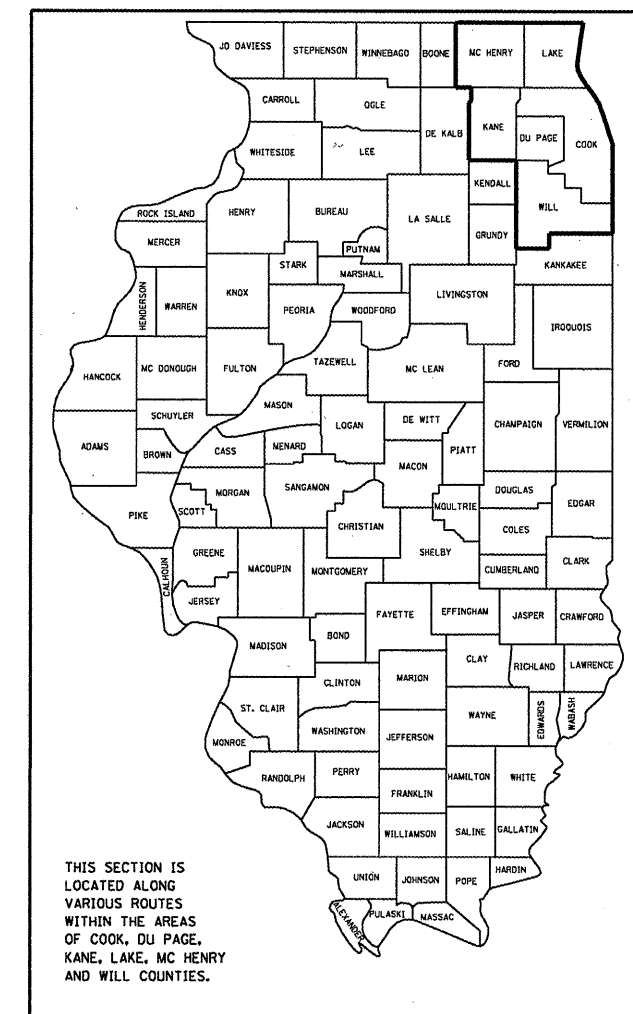
**STATE OF ILLINOIS
DEPARTMENT OF TRANSPORTATION
DIVISION OF HIGHWAYS**

**PROPOSED
HIGHWAY PLANS**

**ROUTE: VARIOUS DISTRICT ONE
DISTRICT WIDE
SECTION: 2009-127 SG
SIGN INSTALLATION AND REPAIR
COUNTY: VARIOUS
C-91-277-10**

FOR INDEX OF SHEETS, SEE SHEET NO. 2

D-91-277-10



**SEE LOCATION MAPS
SHEETS 4 THRU 8**

**J.U.L.I.E.
JOINT UTILITY LOCATION INFORMATION FOR EXCAVATION
1-800-892-0123
OR 811**

**PROJECT ENGINEER: BOB BORO (847) 705-4178
PROJECT MANAGER: KEN ENG**

CONTRACT NO. 60J87

**STATE OF ILLINOIS
DEPARTMENT OF TRANSPORTATION
DIVISION OF HIGHWAYS**

SUBMITTED DECEMBER 15, 2009
Diana M. O'Keefe *or*
 DEPUTY DIRECTOR OF HIGHWAYS, REGION ENGINEER

January 09, 2010
Scott E. Still P.E. *161*
 ACTING ENGINEER OF DESIGN AND ENVIRONMENT

January 09, 2010
Christine M. Reed *161*
 DIRECTOR OF HIGHWAYS, CHIEF ENGINEER

**PRINTED BY THE AUTHORITY
OF THE STATE OF ILLINOIS**

INDEX OF SHEETS

SHEET NO.	DESCRIPTION
1	COVER SHEET
2	INDEX OF SHEETS, STANDARDS AND GENERAL NOTES
3	SUMMARY OF QUANTITIES
4-8	LOCATION MAP
9	ENTRANCE AND EXIT RAMP CLOSURE DETAILS (TC-8)
10	TRAFFIC CONTROL DETAILS FOR SINGLE AND MULTI-LANE WEAVES (TC-9)
11	TRAFFIC CONTROL DETAILS FOR SHOULDER CLOSURES AND PARTIAL RAMP CLOSURES (TC-17)

LIST OF STATE STANDARDS

STANDARD NO.	DESCRIPTION
701006-03	OFF-RD OPERATIONS, 2L, 2W, 15' to 24" FROM PAVEMENT EDGE
701011-02	OFF-RD MOVING OPERATIONS, 2L,2W, DAY ONLY
701101-02	OFF-RD OPERATIONS, MULTILANE, 15' TO 24" FROM PAVEMENT EDGE
701106-02	OFF-RD OPERATIONS, MULTILANE, MORE THAN 15' AWAY
701206-02	LANE CLOSURE, 2L, 2W, NIGHT ONLY, FOR SPEEDS ≥ 45 MPH
701301-03	LANE CLOSURE, 2L, 2W, SHORT TIME OPERATIONS
701400-04	APPROACH TO LANE CLOSURE, FREEWAY/EXPRESSWAY
701401-05	LANE CLOSURE, FREEWAY/EXPRESSWAY
701406-05	LANE CLOSURE, FREEWAY/EXPRESSWAY, DAY OPERATION ONLY
701411-00	LANE CLOSURE, MULTILANE, AT ENTRANCE OR EXIT RAMPS, FOR SPEEDS ≥ 45 MPH
701426-03	LANE CLOSURE, MULTILANE, INTERMITTENT OR MOVING OPERATION, FOR SPEEDS ≥ 45 MPH
701446-01	TWO LANE CLOSURE, FREEWAY/EXPRESSWAY
701901-01	TRAFFIC CONTROL DEVICES
720001-01	SIGN PANEL MOUNTING DETAILS
720006-02	SIGN PANEL ERECTION DETAILS
720011-01	METAL POSTS FOR SIGNS, MARKERS AND DELINEATORS
720016-02	MAST ARM MOUNTED STREET NAME SIGNS
720021-02	SIGN PANELS EXTRUDED ALUMINUM TYPE
728001-01	TELESCOPING STEEL SIGN SUPPORT
729001-01	APPLICATIONS OF TYPES A AND B METAL POSTS (FOR SIGNS AND MARKERS)
731001-01	BASE FOR TELESCOPING STEEL SIGN SUPPORT

GENERAL NOTES

BEFORE STARTING ANY EXCAVATION, THE CONTRACTOR SHALL CALL "JULIE" AT 800-892-0123 OR 811 FOR FIELD LOCATIONS OF BURIED ELECTRIC, TELEPHONE AND GAS FACILITIES. (48 HOUR NOTIFICATION IS REQUIRED)

BEFORE STARTING ANY EXCAVATION, THE CONTRACTOR SHALL CALL "C.U.A.N." (CHICAGO UTILITY ALERT NETWORK) AT (312) 744-7000 FOR FIELD LOCATIONS OF BURIED ELECTRIC, TELEPHONE AND GAS UTILITIES. (48 HOUR NOTIFICATION IS REQUIRED).

ALL WORK SHALL BE DONE AS INDICATED IN THE WORK ORDER FORM.

NO MATERIAL SHALL BE LEFT ON OR NEAR THE ROADWAY DURING NON-WORKING HOURS.

ANY HARDWARE REFERENCED IN THE PLANS OR SPECIAL PROVISIONS SHALL BE SUPPLIED AND INSTALLED BY THE CONTRACTOR. THE COST OF THE HARDWARE IS INCLUDED IN THE COST OF THE ITEMS INVOLVED.

REMOVAL OF DAMAGED MATERIALS SHALL INCLUDE DISMANTLING, LOADING, HAULING AND DISPOSAL. THE WORK SITE SHALL BE LEFT IN A SAFE AND ORDERLY CONDITION.

THE CONTRACTOR SHALL PICK UP THE SIGNS AND POSTS FROM ANY ONE OF THE FOUR (4) SIGN SHOPS THAT ISSUED THEM THE WORK ORDER.

THE SIGN SHOP LOCATIONS ARE AS FOLLOWS:

(ESS)
 IDOT ELGIN SIGN SHOP
 595 S. STATE STREET, DRIVE F, DOOR 22
 ELGIN, IL 60123
 (847) 741-5302

(NLSS)
 IDOT NEW LENOX SIGN SHOP
 I-80 & US RTE. 30, SE FRONTAGE RD
 NEW LENOX, IL 60451
 (815) 485-6475

(NSSS)
 IDOT NORTHSIDE SIGN SHOP
 7151 W. FOREST PRESERVE DRIVE
 CHICAGO, IL 60634
 (773) 685-8386

(SSSS)
 IDOT SOUTHSIDE SIGN SHOP
 15940 PULASKI RD.
 MARKHAM, IL 60426
 (708) 597-9800

STATE OF ILLINOIS
 DEPARTMENT OF TRANSPORTATION

INDEX OF SHEETS, STATE STANDARDS & GENERAL NOTES

SCALE: SHEET NO. OF SHEETS STA. TO STA.

F.A. RTE.	SECTION	COUNTY	TOTAL SHEETS	SHEET NO.
VAR.	2009-127 SG	VARIOUS	11	2
CONTRACT NO. 60J87				
FED. ROAD DIST. NO. ILLINOIS FED. AID PROJECT				

F.A. RTE.	SECTION	COUNTY	TOTAL SHEETS	SHEET NO.
VAR.	2009-027 SG	VARIOUS	11	3
FED. ROAD DIST. NO. 1		ILLINOIS	HIGHWAY PROJECT	
CONTRACT NO. 60J87				

SUMMARY OF QUANTITIES		UNIT	CONSTRUCTION TYPE CODE	
CODE NO	ITEM		URBAN 100% STATE TOTAL QUANTITIES	Y002-1C
63500105	DELINEATORS	EACH	250	250
72300100	INSTALL EXISTING SIGN PANEL	SO FT	1000	1000
72400100	REMOVE SIGN PANEL ASSEMBLY - TYPE A	EACH	600	600
72400200	REMOVE SIGN PANEL ASSEMBLY - TYPE B	EACH	200	200
72400330	REMOVE SIGN PANEL - TYPE 3	SO FT	500	500
72400500	RELOCATE SIGN PANEL ASSEMBLY - TYPE A	EACH	100	100
72400600	RELOCATE SIGN PANEL ASSEMBLY - TYPE B	EACH	100	100
72400730	RELOCATE SIGN PANEL - TYPE 3	SO FT	1000	1000
72400900	REMOVE SIGN PANEL	EACH	750	750
72800100	TELESCOPING STEEL SIGN SUPPORT	FOOT	5000	5000
73000100	WOOD SIGN SUPPORT	FOOT	2500	2500
73100100	BASE FOR TELESCOPING STEEL SIGN SUPPORT	EACH	500	500
X0325130	TUBULAR TRAFFIC SIGN POST	EACH	200	200
X0326172	REMOVE EXISTING SIGN SUPPORT	EACH	100	100
X0326173	RELOCATE EXISTING SIGN SUPPORT	EACH	50	50
X0326174	REPAIR EXISTING SIGN ASSEMBLY	EACH	100	100
X0326177	INSTALL ROUND STEEL SIGN SUPPORT	FOOT	4	4
X0326180	INSTALL SIGN PANEL - TYPE 3	SO FT	200	200
X0326181	INSTALL STREET SIGN	SO FT	1500	1500
X0877000	STRAIGHTEN EXISTING SIGN POST - TYPE A ASSEMBLY	EACH	100	100
X0877100	STRAIGHTEN EXISTING SIGN POST - TYPE B ASSEMBLY	EACH	100	100
X0877200	STRAIGHTEN EXISTING SIGN POST - TYPE 3 ASSEMBLY	EACH	50	50
X0960600	DRILL HOLE IN CONCRETE MEDIAN	EACH	100	100
X7230100	INSTALL SIGN PANEL - TYPE 1	SO FT	5000	5000
X7230200	INSTALL SIGN PANEL - TYPE 2	SO FT	1000	1000
Z0024478	FLEXIBLE DELINEATORS	EACH	200	200
X7200150	INSTALL SIGN PANEL-TYPE 1 (EXPRESSWAY)	SO FT	1000	1000
X7200250	INSTALL SIGN PANEL-TYPE 2 (EXPRESSWAY)	SO FT	3000	3000
X7200350	INSTALL SIGN PANEL-TYPE 3 (EXPRESSWAY)	SO FT	300	300

REVISIONS	
NAME	DATE

ILLINOIS DEPARTMENT OF TRANSPORTATION
SUMMARY OF QUANTITIES

PLOT DATE: 12/29/2009

12/29/2009 10:57:48 AM User=borart

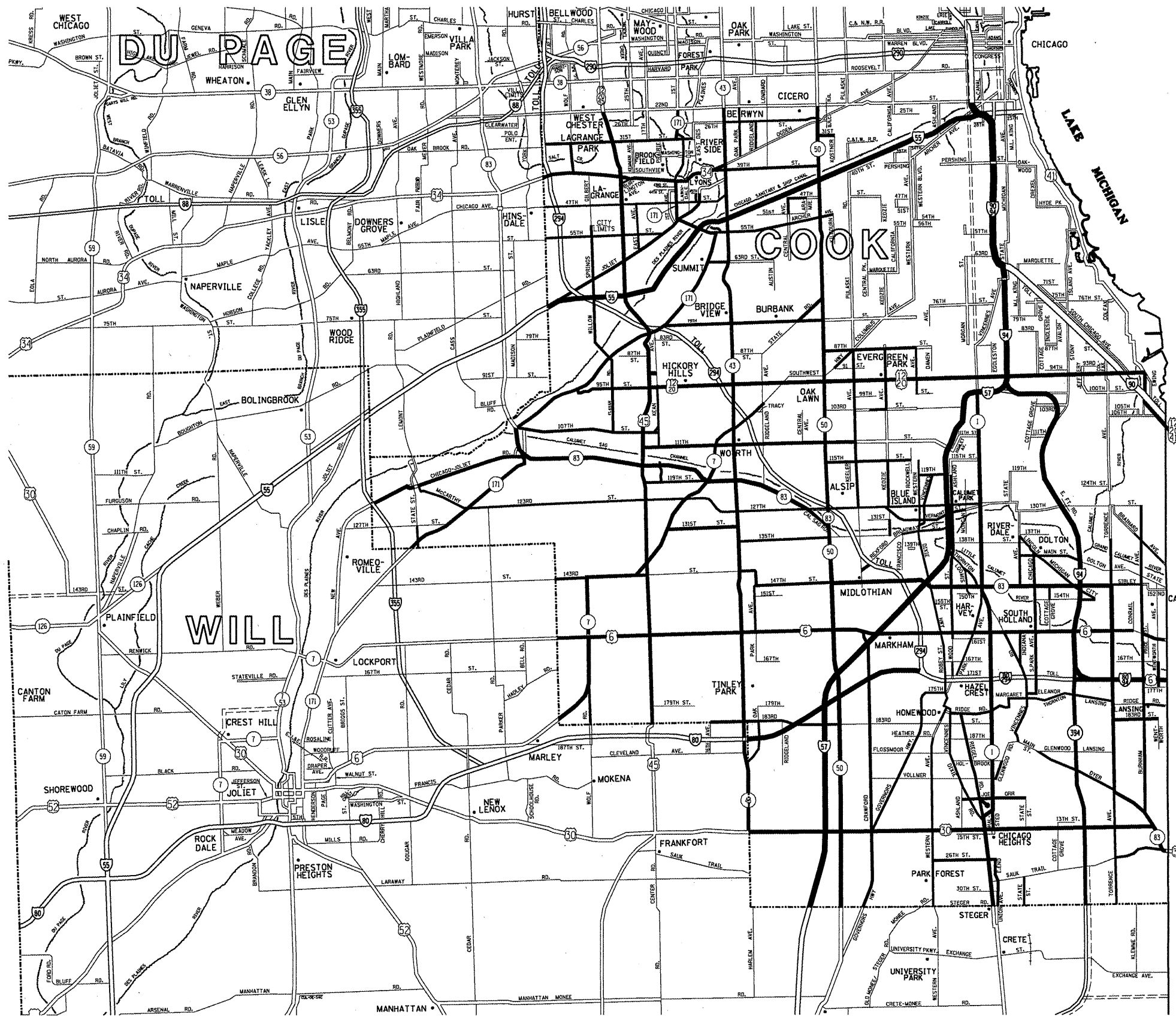


NEW LENOX SIGN SHOP JURISDICTION

DISTRICT NO. 1
 STATE HIGHWAYS & EXPRESSWAYS
 WITHIN STATE JURISDICTION
 (EXCEPT TOLLWAYS)
 FUTURE HIGHWAYS
 VARIOUS AGENCIES HIGHWAYS

* VARIOUS

FILE NAME = c:\pwwork\pww\d01\BORORT\d0177395\sign...	USER NAME = BORORT nwt.dgn	DESIGNED - DRAWN -	REVISED - REVISED -	STATE OF ILLINOIS DEPARTMENT OF TRANSPORTATION	NEW LENOX SIGN SHOP JURISDICTION SIGN INSTALLATION AND REPAIR			F.A. RTE. VAR.	SECTION 2009-127 SG	COUNTY *	TOTAL SHEETS 11	SHEET NO. 4
PLOT SCALE = 100.0000' / IN.	CHECKED -	REVISED -	REVISED -		SCALE:	SHEET NO.	OF	SHEETS	STA.	TO STA.	CONTRACT NO. 60J87	
PLOT DATE = 12/16/2009	DATE -	REVISED -	REVISED -		FED. ROAD DIST. NO. [ILLINOIS] FED. AID PROJECT							



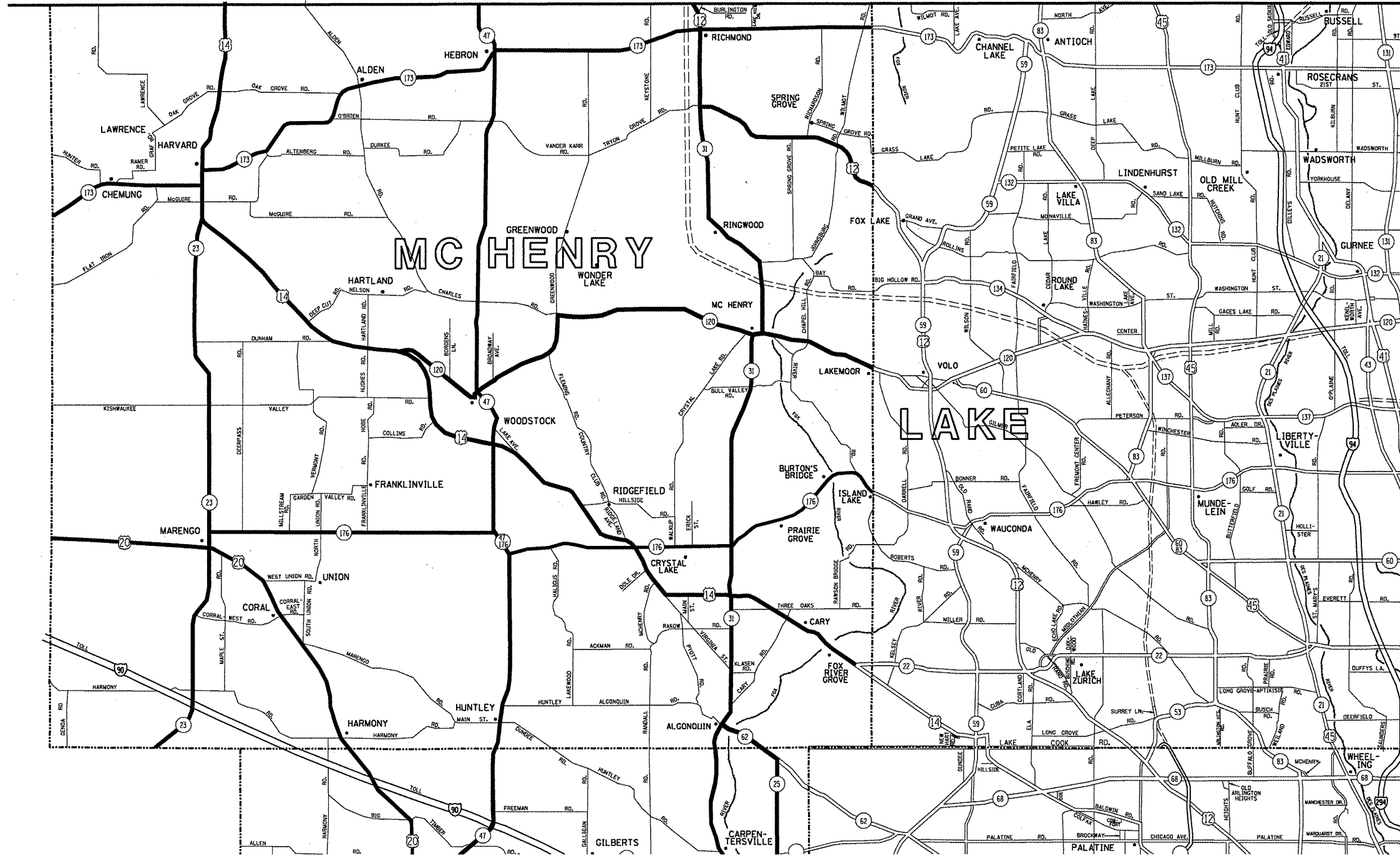
— SOUTH SIDE SIGN SHOP JURISDICTION

- DISTRICT NO. 1
- STATE HIGHWAYS & EXPRESSWAYS WITHIN STATE JURISDICTION (EXCEPT TOLLWAYS)
 - - - FUTURE HIGHWAYS
 - VARIOUS AGENCIES HIGHWAYS

* VARIOUS

FILE NAME = c:\p\work\p\WIDOT\BORORT\d0177395\sign	USER NAME = BORORT rs.t.dgn	DESIGNED - DRAWN -	REVISED - REVISED -	STATE OF ILLINOIS DEPARTMENT OF TRANSPORTATION	SOUTH SIDE SIGN SHOP JURISDICTION SIGN INSTALLATION AND REPAIR	F.A. RTE. VAR.	SECTION 2009-127 SG	COUNTY *	TOTAL SHEETS 11	SHEET NO. 5
PLT SCALE = 100.0000' / IN.	CHECKED -	REVISED -	SCALE:			SHEET NO. OF SHEETS STA. TO STA.	FED. ROAD DIST. NO. [ILLINOIS] FED. AID PROJECT	CONTRACT NO. 60JB7		
PLT DATE = 12/16/2009	DATE -	REVISED -								

WISCONSIN



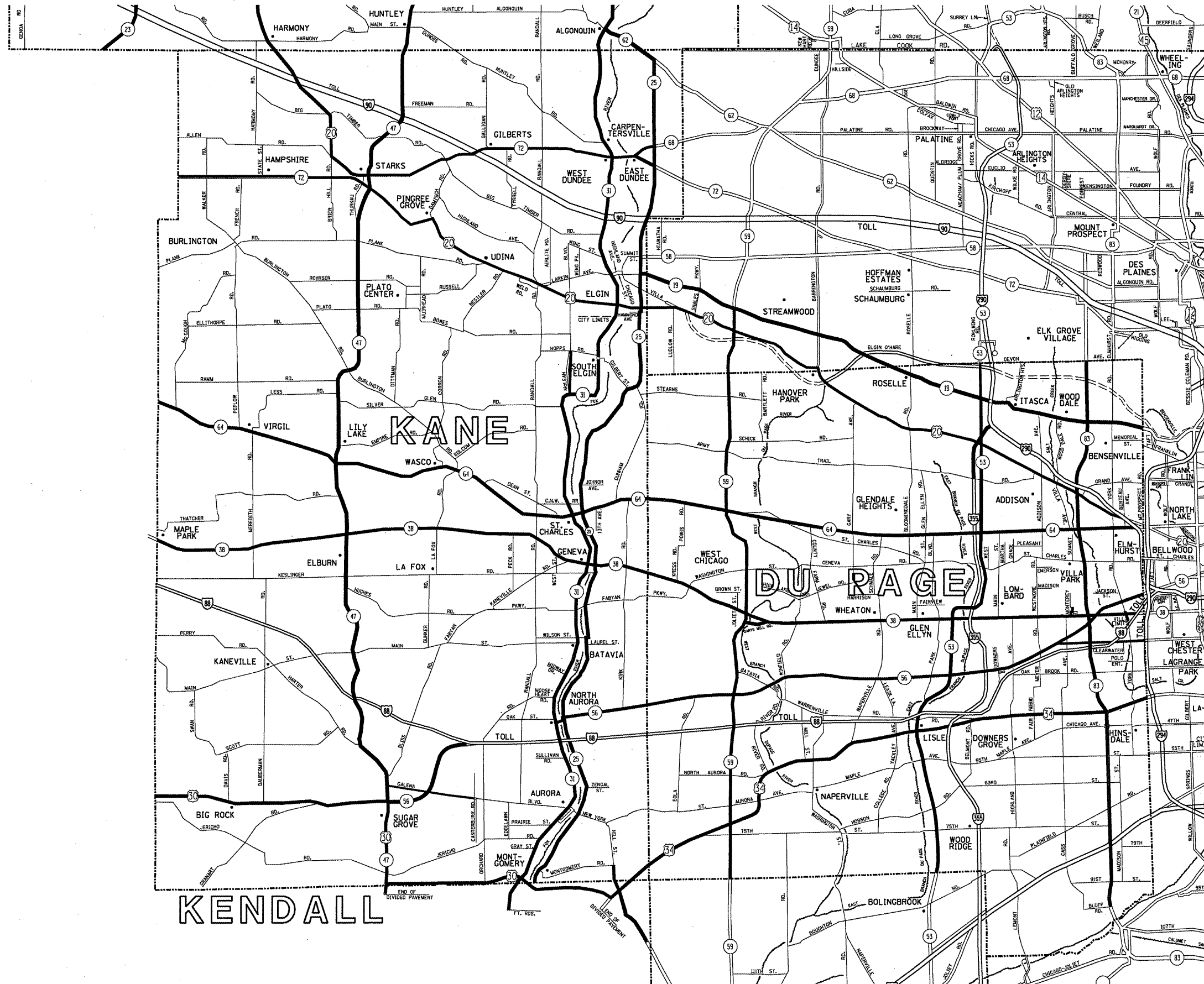
ELGIN SIGN SHOP JURISDICTION

DISTRICT NO. 1
 STATE HIGHWAYS & EXPRESSWAYS
 WITHIN STATE JURISDICTION
 (EXCEPT TOLLWAYS)
 FUTURE HIGHWAYS
 VARIOUS AGENCIES HIGHWAYS

SEE NEXT SHEET FOR ELGIN SIGN SHOP CONTINUATION

FILE NAME = c:\pwork\PW1001\BORORT\d0177395\sign	USER NAME = BORORT rst.dgn	DESIGNED - DRAWN -	REVISED - REVISED -	STATE OF ILLINOIS DEPARTMENT OF TRANSPORTATION	ELGIN SIGN SHOP JURISDICTION SHEET 1 OF 2 SIGN INSTALLATION AND REPAIR		F.A. RTE. VAR.	SECTION 2009-127 SG	COUNTY *	TOTAL SHEETS 11	SHEET NO. 6	
PLOT SCALE = 100.0000' / IN.		CHECKED -	REVISED -		SCALE:	SHEET NO.	OF SHEETS	STA.	TO STA.	CONTRACT NO. 60J87		
PLOT DATE = 12/16/2009		DATE -	REVISED -		FED. ROAD DIST. NO. [ILLINOIS] FED. AID PROJECT							
* VARIOUS												

SEE PREVIOUS SHEET FOR ELGIN SIGN SHOP CONTINUATION

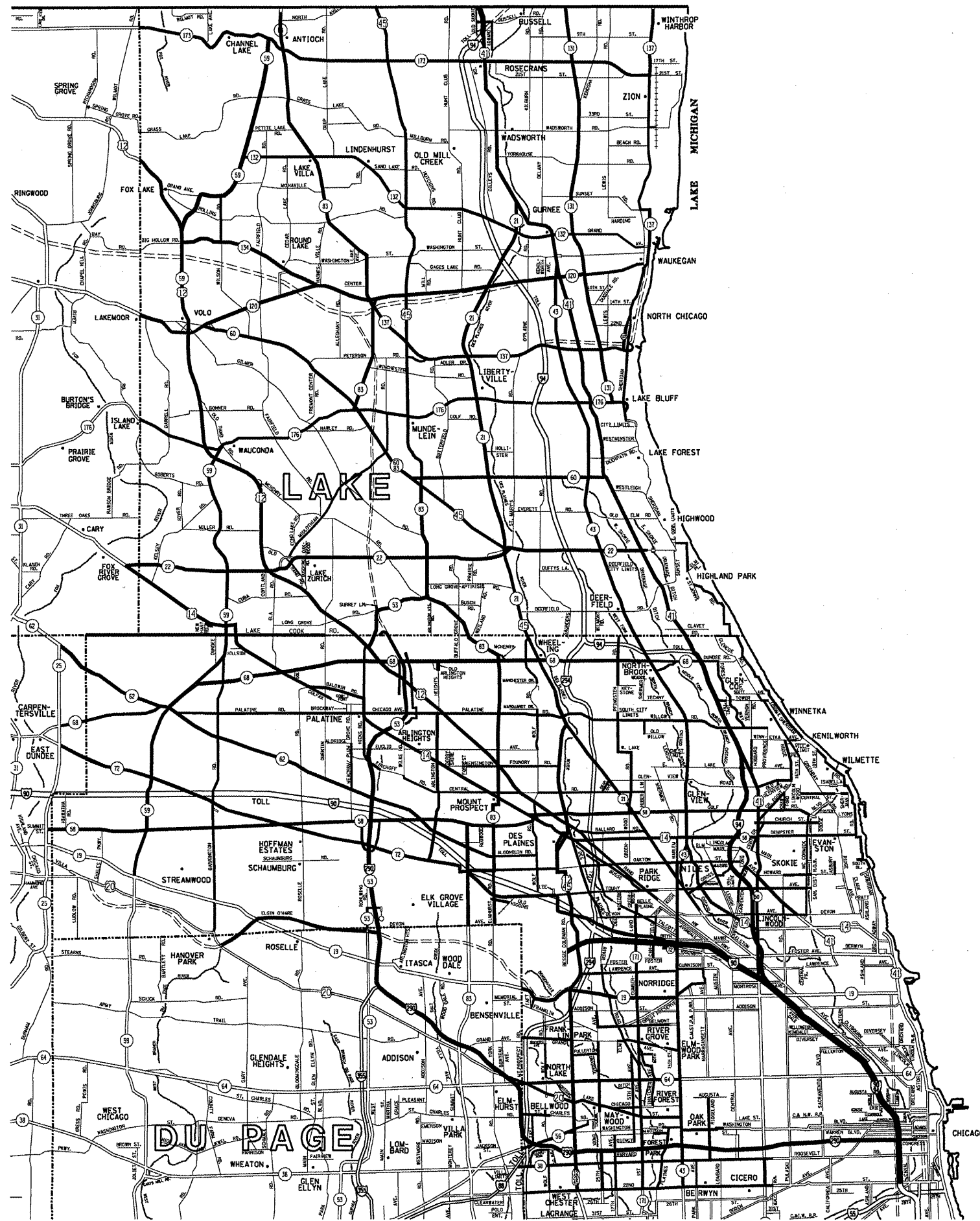


ELGIN SIGN SHOP JURISDICTION

- DISTRICT NO. 1
- STATE HIGHWAYS & EXPRESSWAYS WITHIN STATE JURISDICTION (EXCEPT TOLLWAYS)
 - FUTURE HIGHWAYS
 - VARIOUS AGENCIES HIGHWAYS

* VARIOUS

FILE NAME = c:\pwork\VPWIDOT\BORORT\d0177395\sign	USER NAME = BORORT nat.dgn	DESIGNED - DRAWN -	REVISED - REVISED -	STATE OF ILLINOIS DEPARTMENT OF TRANSPORTATION	ELGIN SIGN SHOP JURISDICTION SHEET 2 OF 2 SIGN INSTALLATION AND REPAIR	F.A. RTE. VAR.	SECTION 2009-127 SG	COUNTY *	TOTAL SHEETS 11	SHEET NO. 7		
PLOT SCALE = 100.0000' / IN.	CHECKED -	REVISED -	SCALE:			SHEET NO. OF SHEETS STA.	TO STA.	CONTRACT NO. 60J87				
PLOT DATE = 12/16/2009	DATE -	REVISED -				FED. ROAD DIST. NO.	ILLINOIS FED. AID PROJECT					



█ NORTHSIDE SIGN SHOP JURISDICTION

- DISTRICT NO. 1
- STATE HIGHWAYS & EXPRESSWAYS WITHIN STATE JURISDICTION (EXCEPT TOLLWAYS)
 - - - FUTURE HIGHWAYS
 - VARIOUS AGENCIES HIGHWAYS

* VARIOUS

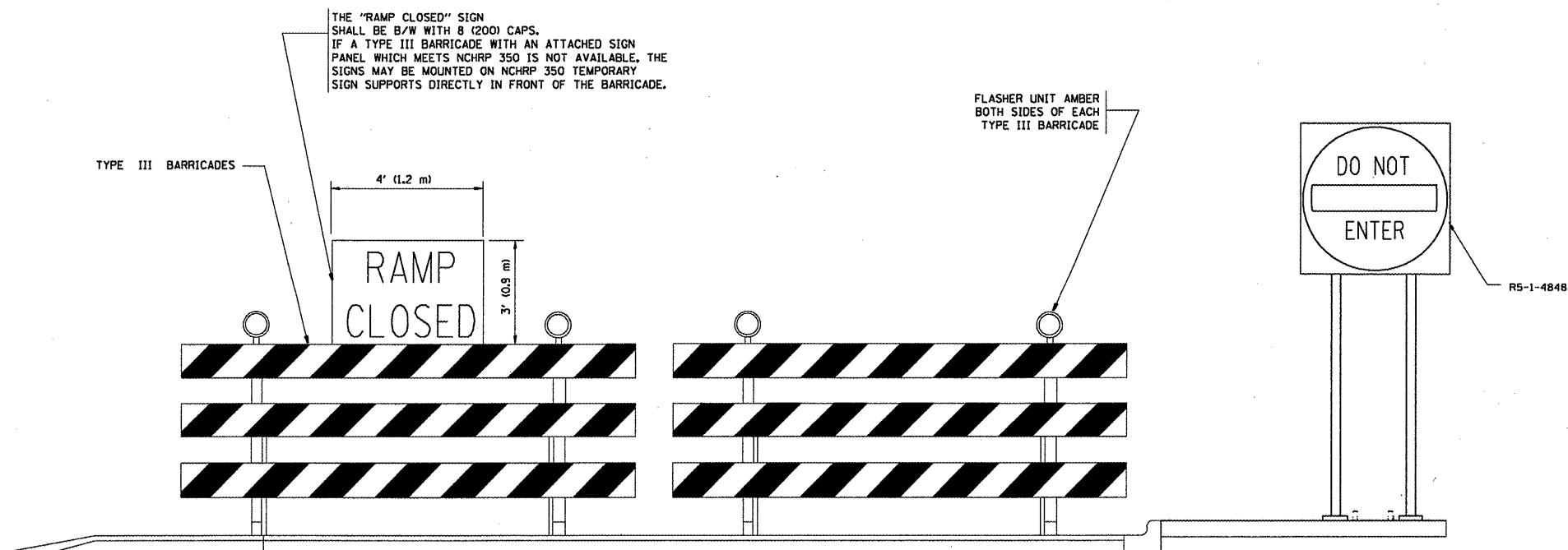
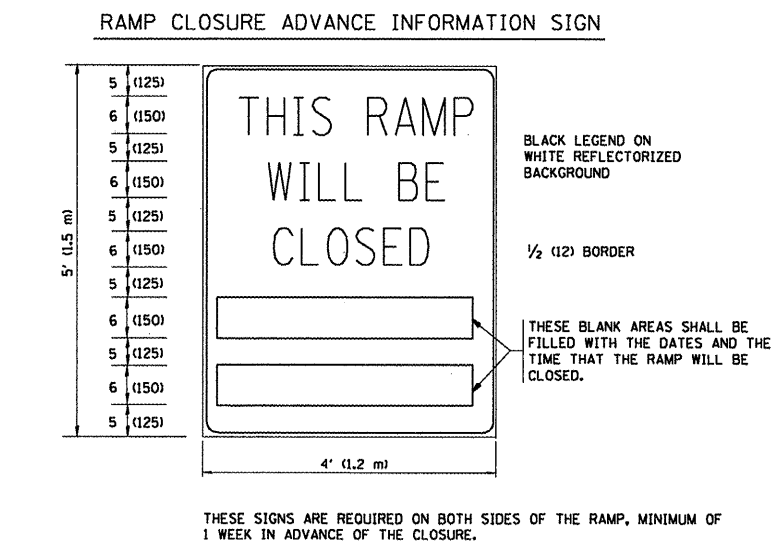
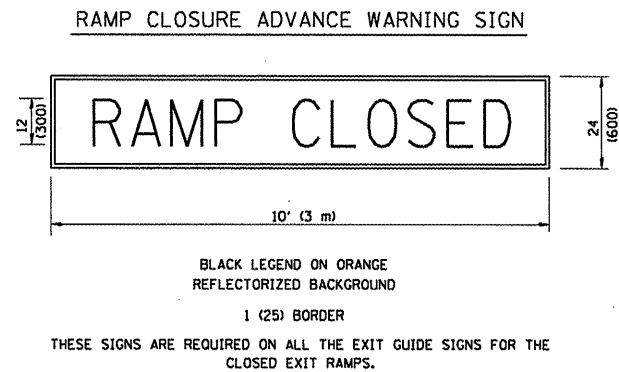
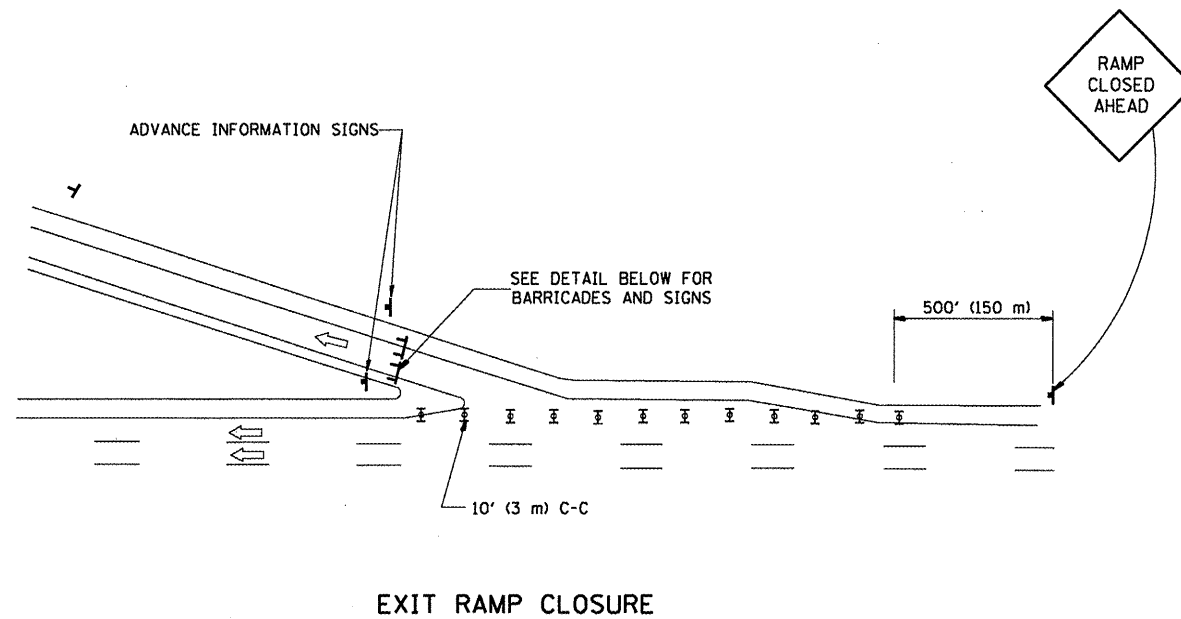
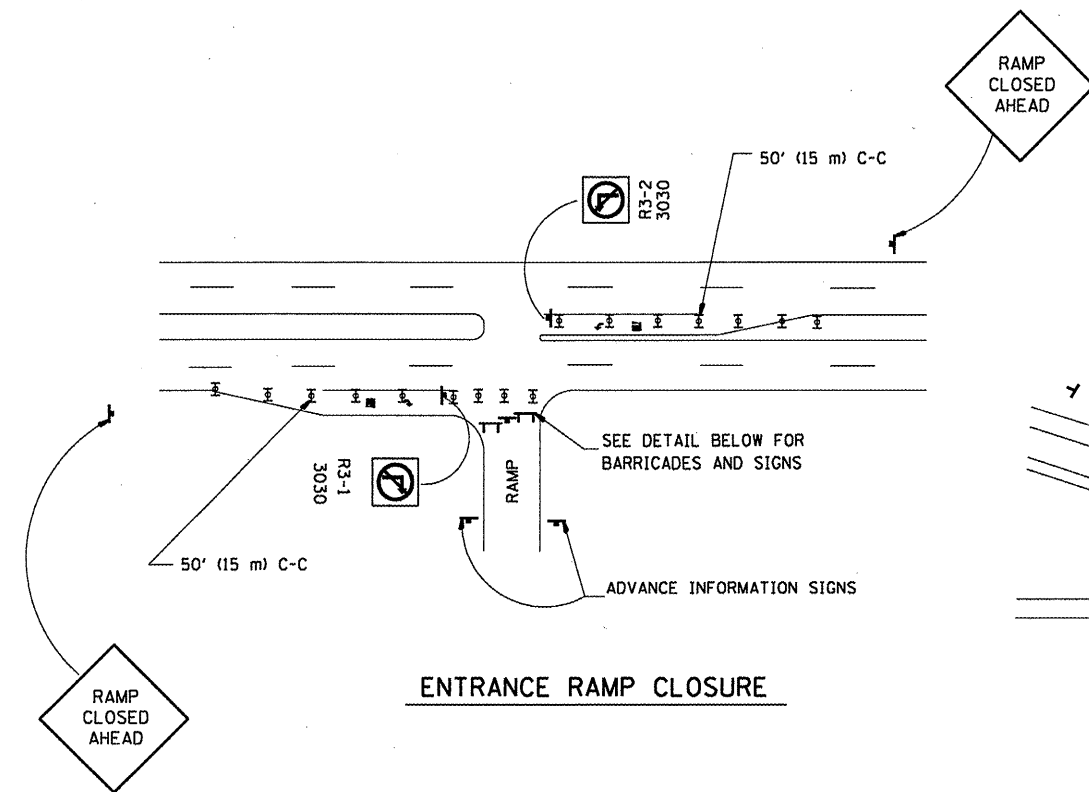
**STATE OF ILLINOIS
DEPARTMENT OF TRANSPORTATION**

**NORTHSIDE SIGN SHOP JURISDICTION
SIGN INSTALLATION AND REPAIR**

FILE NAME =	USER NAME = BORORT	DESIGNED -	REVISED -
ca\pwwork\pwidot\BORORT\06177395\sign	ns1.dgn	DRAWN -	REVISED -
PLOT SCALE = 100.0000' / IN.	CHECKED -	REVISOR -	REVISED -
PLOT DATE = 12/16/2009	DATE -		

SCALE: SHEET NO. OF SHEETS STA. TO STA.

F.A. RTE.	SECTION	COUNTY	TOTAL SHEETS	SHEET NO.
VAR.	2009-027 SG	*	11	8
FED. ROAD DIST. NO.			ILLINOIS FED. AID PROJECT	
CONTRACT NO. 60J87				



GENERAL NOTES:

- CONES MAY BE SUBSTITUTED FOR DRUMS OR TYPE II BARRICADES DURING DAY OPERATIONS. CONES SHALL BE A MINIMUM OF 28 (700) HIGH.
- STEADY BURN LIGHTS WILL NOT BE REQUIRED FOR DAY OPERATIONS.
- A FLAGGER SHALL BE POSITIONED AT EACH CLOSED RAMP THAT IS OPEN TO CONSTRUCTION VEHICLES.
- ALL ROUTE MARKERS AND TRAILBLAZER ASSEMBLIES WHICH DIRECT MOTORISTS TO A CLOSED ENTRANCE RAMP SHALL BE COVERED.
- THE SIGNING AND BARRICADING WHICH IS REQUIRED BY THIS DETAIL SHALL BE INCLUDED IN THE COST OF TRAFFIC CONTROL AND PROTECTION (EXPRESSWAYS).
- AUTHORIZATION FROM THE DISTRICT'S BUREAU OF TRAFFIC IS REQUIRED FOR ALL RAMP CLOSURES.
- THE RAMP CLOSURE ADVANCE INFORMATION SIGNS SHALL BE ERECTED IF THE CLOSURE TIME EXCEEDS TWENTY-FOUR (24) HOURS. ADDITIONAL ADVANCE WARNING SIGNS ON EXIT GUIDE SIGNING WILL BE REQUIRED FOR EXIT RAMP CLOSURES THAT EXCEED TWENTY FOUR (24) HOURS IN LENGTH.

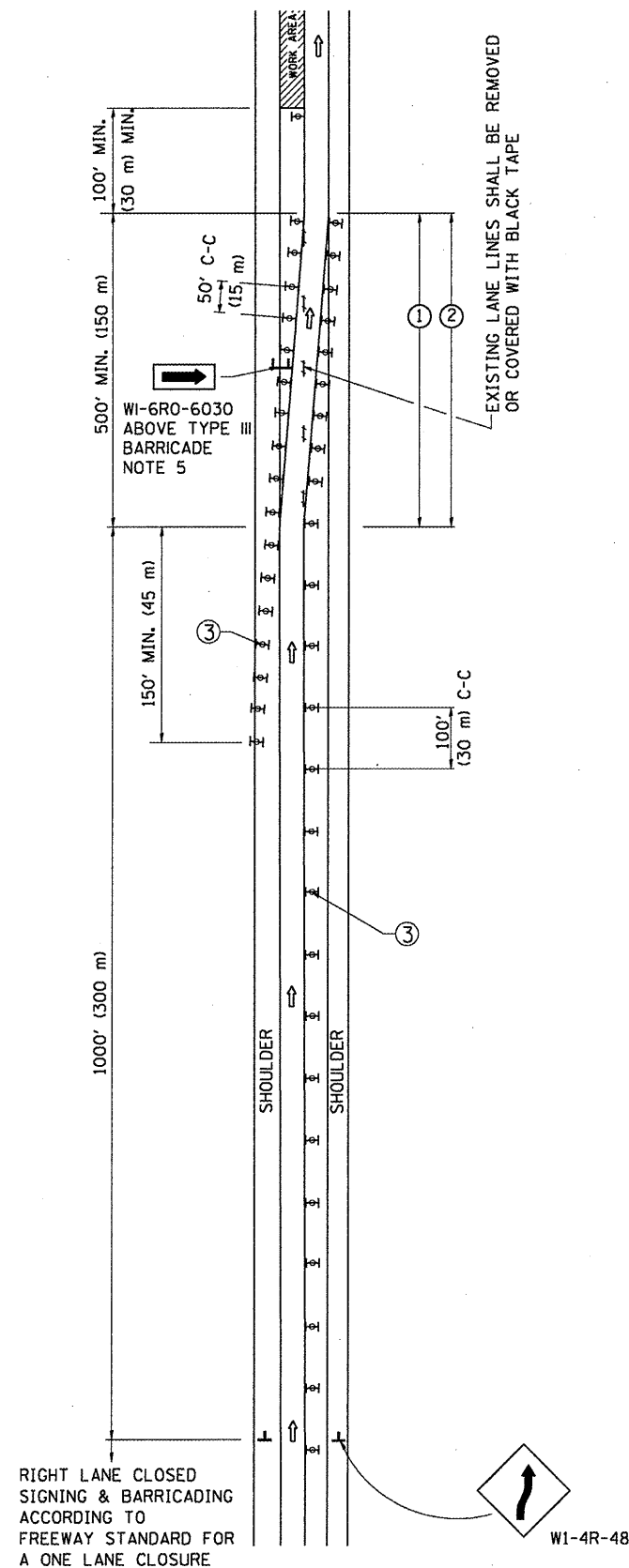
ALL DIMENSIONS ARE IN INCHES (MILLIMETERS) UNLESS OTHERWISE SHOWN.

SYMBOLS

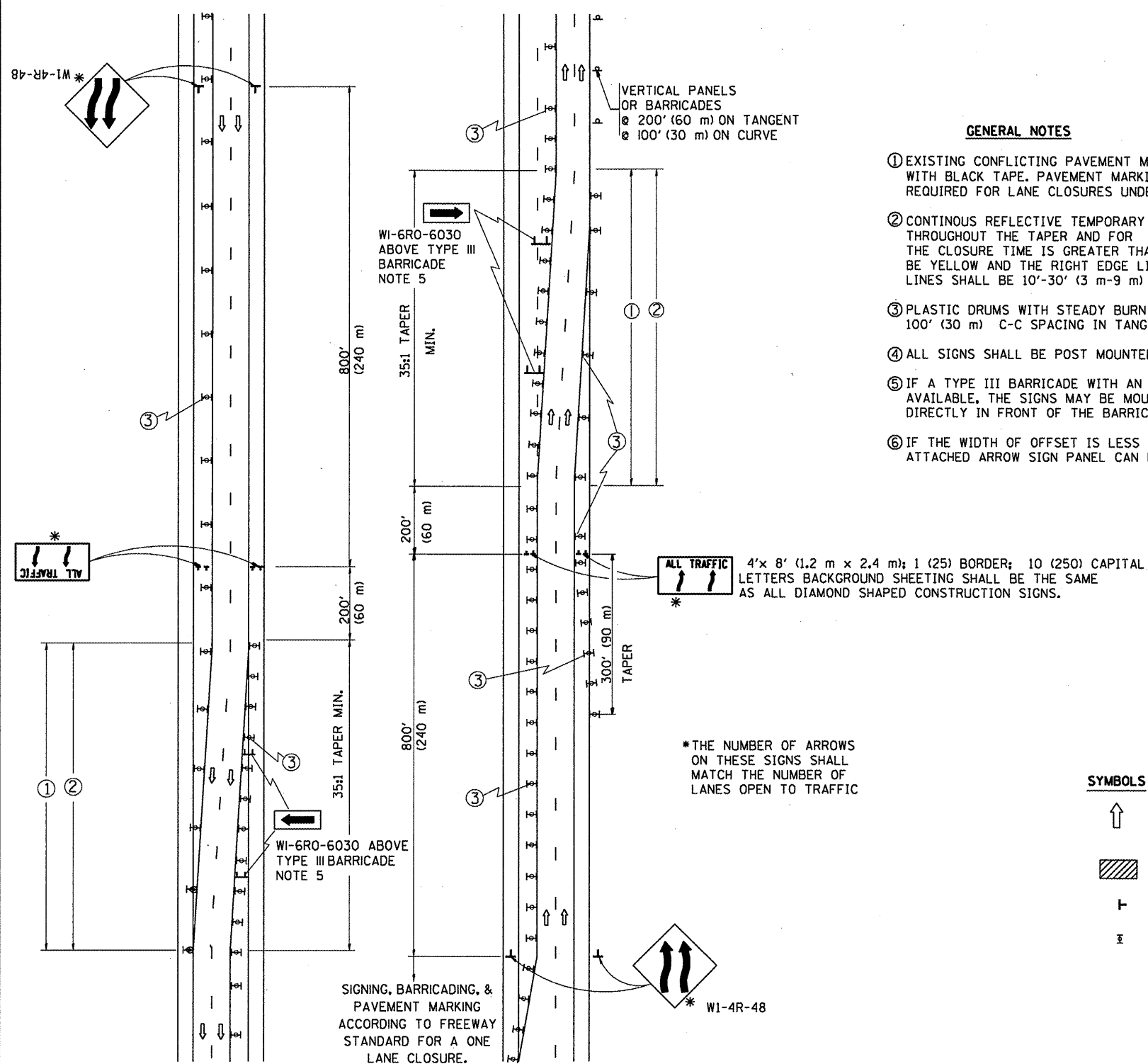
- ☐ TYPE II BARRICADE, DRUM OR VERTICAL BARRICADE WITH STEADY BURN MONO-DIRECTIONAL LIGHT
- ☐ TYPE III BARRICADE WITH FLASHING LIGHT

FILE NAME =	USER NAME = BORORT	DESIGNED - DWS	REVISED - DWS 12-94	STATE OF ILLINOIS DEPARTMENT OF TRANSPORTATION	FREEWAY ENTRANCE AND EXIST RAMP CLOSURE DETAILS			F.A. RTE.	SECTION	COUNTY	TOTAL SHEETS	SHEET NO.	
as:\pwork\pwork\borort\0177395\01st.dgn		DRAWN -	REVISED - DWS/JAF 12-02		SCALE: NONE	SHEET NO. 1 OF 1 SHEETS	STA.	TO STA.	VAR	2009-127 SG	VARIOUS	11	9
		PLOT SCALE = 100.0000' / IN.	CHECKED - JAF 02-06							TC-08			CONTRACT NO. 60J87
		PLOT DATE = 12/16/2009	REVISD - SPB 01-07							FED. ROAD DIST. NO. 1 ILLINOIS FED. AID PROJECT			

SINGLE LANE WEAVE



MULTI-LANE WEAVE



GENERAL NOTES

- EXISTING CONFLICTING PAVEMENT MARKING LINES SHALL BE REMOVED OR COVERED WITH BLACK TAPE. PAVEMENT MARKING REMOVAL OR BLACK TAPE SHALL NOT BE REQUIRED FOR LANE CLOSURES UNDER 24 HOURS IN DURATION.
- CONTINUOUS REFLECTIVE TEMPORARY PAVEMENT MARKING TAPE SHALL BE PLACED THROUGHOUT THE TAPER AND FOR 300' (90 m) ALONG SIDE THE WORK AREA WHERE THE CLOSURE TIME IS GREATER THAN FOURTEEN DAYS. THE LEFT EDGE LINE SHALL BE YELLOW AND THE RIGHT EDGE LINE SHALL BE WHITE. FOR MULTI-LANE WEAVE LANE LINES SHALL BE 10'-30' (3 m-9 m) SKIP DASH, WHITE.
- PLASTIC DRUMS WITH STEADY BURN LIGHTS AT 50' (15 m) C-C SPACING IN TAPERS AND 100' (30 m) C-C SPACING IN TANGENTS.
- ALL SIGNS SHALL BE POST MOUNTED IF THE CLOSURE TIME EXCEEDS FOUR DAYS.
- IF A TYPE III BARRICADE WITH AN ATTACHED SIGN PANEL WHICH MEETS NCHRP 350 IS NOT AVAILABLE, THE SIGNS MAY BE MOUNTED ON NCHRP 350 TEMPORARY SIGN SUPPORTS DIRECTLY IN FRONT OF THE BARRICADE.
- IF THE WIDTH OF OFFSET IS LESS THAN 6' THEN THE TYPE III BARRICADE WITH ATTACHED ARROW SIGN PANEL CAN BE ELIMINATED IN THE TAPER AREAS.

SYMBOLS

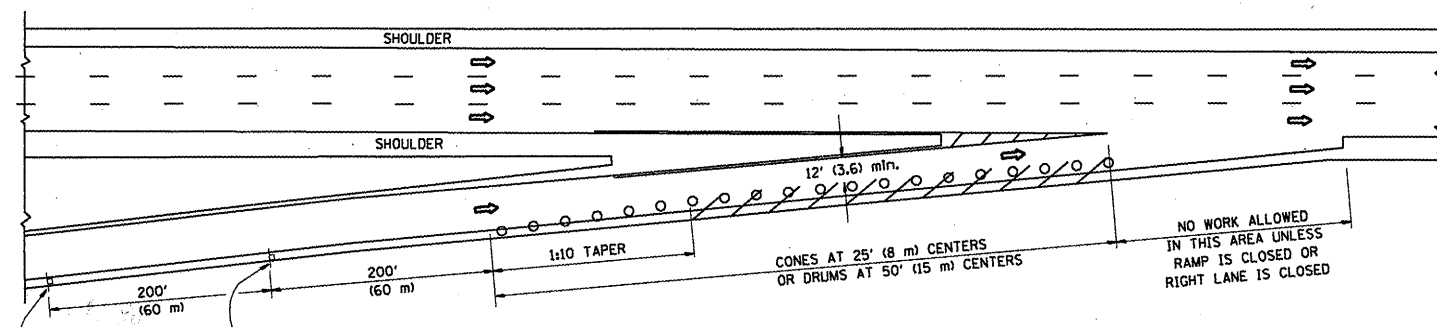
- DIRECTION OF TRAFFIC
- WORK AREA
- SIGN ON PORTABLE OR PERMANENT SUPPORT
- TYPE II BARRICADE, DRUM OR VERTICAL BARRICADE WITH MONO-DIRECTIONAL STEADY BURNING LIGHT

ALL DIMENSIONS ARE IN INCHES (MILLIMETERS) UNLESS OTHERWISE SHOWN

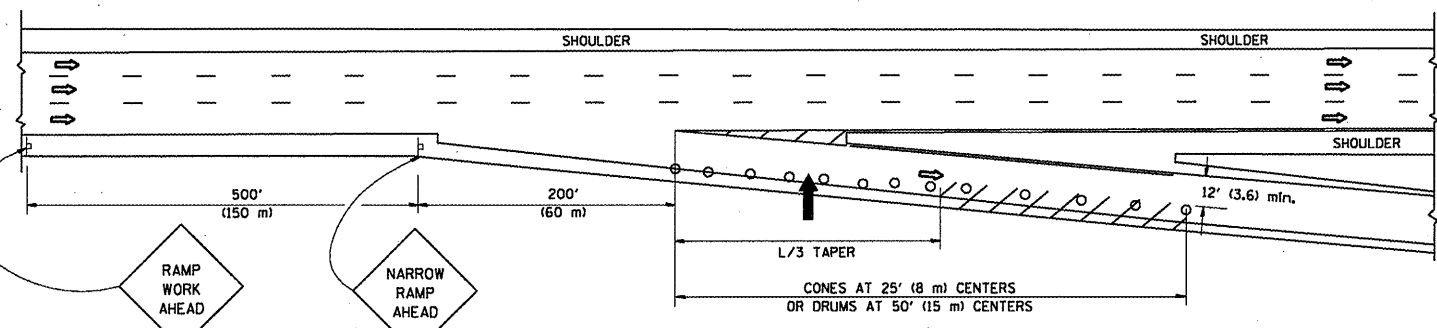
FILE NAME =	USER NAME = BORORT	DESIGNED - DWS	REVISED - DWS 11-96	STATE OF ILLINOIS DEPARTMENT OF TRANSPORTATION	TRAFFIC CONTROL DETAILS FOR FREEWAY SINGLE & MULTI-LANE WEAVE			F.A. RTE.	SECTION	COUNTY	TOTAL SHEETS	SHEET NO.	
at\pe_work\pudot\borort\d8177395\DistSched.dgn		DRAWN -	REVISED - JAF 01-03		SCALE: NONE	SHEET NO. 1 OF 1 SHEETS	STA.	TO STA.	VAR	2009-127 SG	VARIOUS	11	10
		PLOT SCALE = 1/8" = 100.0000' / IN.	REVISED - JAF 02-06							TC-09			
		PLOT DATE = 12/16/2009	REVISED - SPB 01-07							FED. ROAD DIST. NO. 1 (ILLINOIS) FED. AID PROJECT			CONTRACT NO. 60J87

PARTIAL RAMP CLOSURE DETAILS

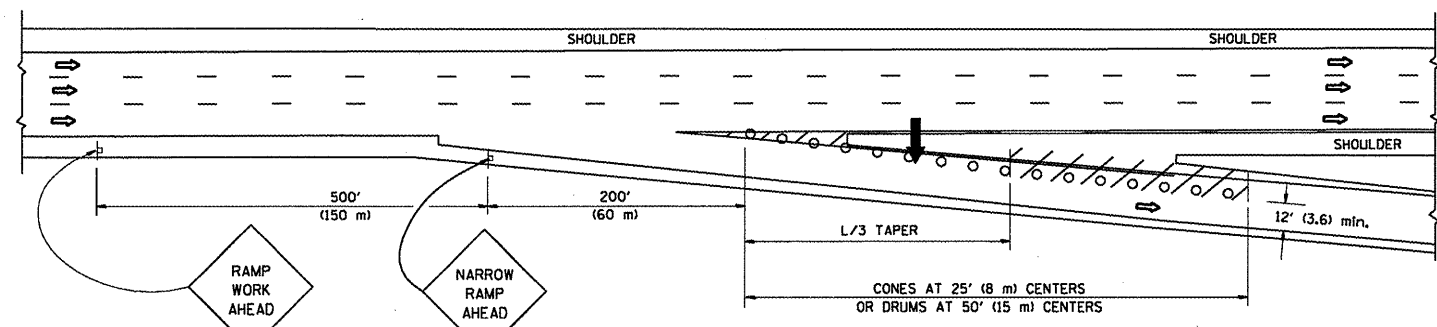
SHOULDER CLOSURE DETAILS



TYPICAL ENTRANCE RAMP



TYPICAL EXIT RAMP



TYPICAL EXIT RAMP

SYMBOLS

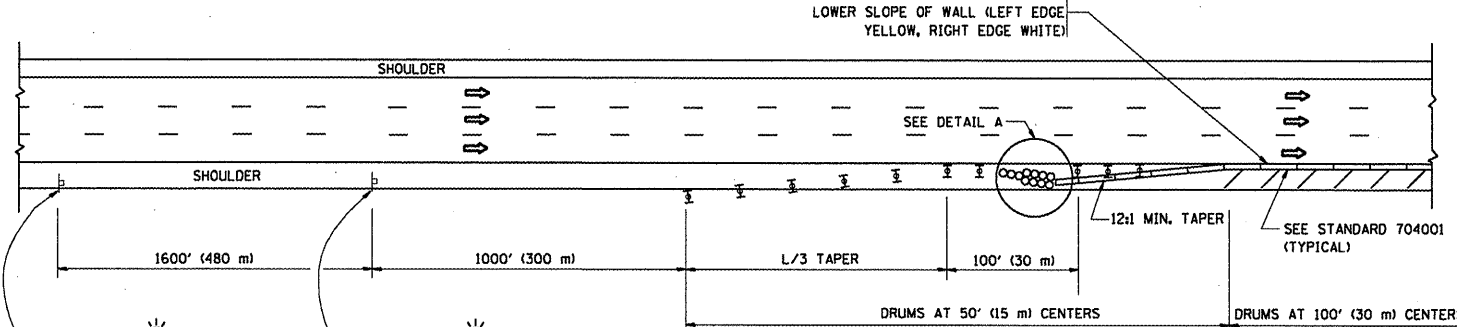
- ➔ ARROWBOARD
- ▨ WORK AREA
- ┆ SIGN ON PORTABLE OR PERMANENT SUPPORT
- FLAGGER WITH CONTROL SIGN
- ⊓ TYPE II BARRICADE, DRUM OR VERTICAL BARRICADE WITH STEADY BURN MONO-DIRECTIONAL LIGHT
- CONE, DRUM OR BARRICADE

GENERAL NOTES

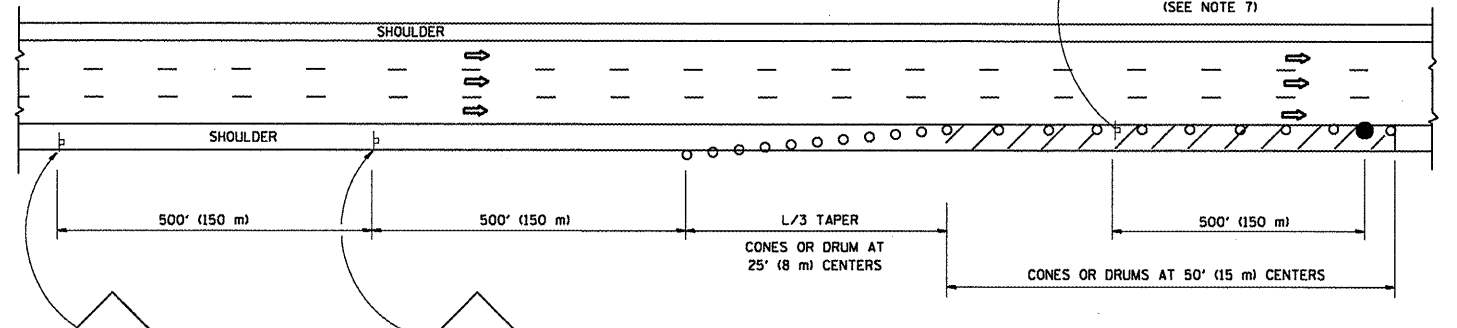
1. THE "L" DISTANCE EQUALS:

SPEED LIMIT	FORMULAS
45 mph (80 km/h)	METRIC ENGLISH
OR GREATER:	$L = 0.65(W)(S)$ $L = (W)(S)$

W = WIDTH OF OFFSET IN FEET (METERS)
S = NORMAL POSTED SPEED MPH (KM/H)
2. PLASTIC DRUMS WITH HIGH PERFORMANCE REFLECTIVE SHEETING AND STEADY BURNING LIGHTS ARE REQUIRED FOR ALL NIGHTTIME CLOSURES.
3. ALL SIGNS SHALL BE POST MOUNTED IF THE CLOSURE TIME EXCEEDS FOUR DAYS.
4. FLASHING LIGHTS SHALL BE USED DURING THE HOURS OF DARKNESS AND SHALL BE INSTALLED ABOVE THE FIRST TWO SETS OF SIGNS.

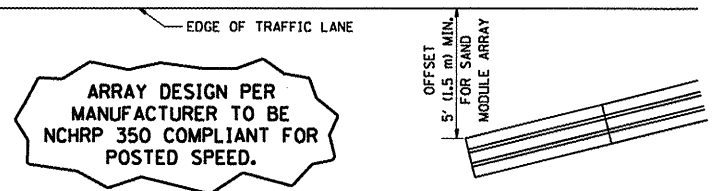


PERMANENT SHOULDER CLOSURE



DAYTIME SHOULDER CLOSURE

THIS DETAIL IS USED WHERE:
1. VEHICLES, EQUIPMENT, WORKERS OR THEIR ACTIVITIES ENCR OACH IN AN AREA CLOSER THAN 15' (4.5 m) TO THE EDGE OF PAVEMENT FOR A PERIOD IN EXCESS OF 15 MINUTES.



**DETAIL "A"
IMPACT ATTENUATOR, TEMPORARY
(SEE NOTE 5)**

ALL DIMENSIONS ARE IN INCHES (MILLIMETERS) UNLESS OTHERWISE SHOWN.

**STATE OF ILLINOIS
DEPARTMENT OF TRANSPORTATION**

**TRAFFIC CONTROL DETAILS FOR FREEWAY
SHOULDER CLOSURES AND PARTIAL RAMP CLOSURES**

FILE NAME =	USER NAME = BORORT	DESIGNED -	REVISED - J.A.F. 12-02	STATE OF ILLINOIS DEPARTMENT OF TRANSPORTATION	TRAFFIC CONTROL DETAILS FOR FREEWAY SHOULDER CLOSURES AND PARTIAL RAMP CLOSURES	F.A. RTE.	SECTION	COUNTY	TOTAL SHEETS	SHEET NO.	
or:\p\work\p\dot\borort\d0177395\01stc.dgn		DRAWN - D.W.S.	REVISED - 04-03			VAR	2009-127 SG	VARIOUS	11	11	
PLOT SCALE = 1/8" = 1'-0"		CHECKED -	REVISED - J.A.F. 12-06			TC-17		CONTRACT NO. 60J87			
PLOT DATE = 12/16/2009		DATE - 11-96	REVISED - S.P.B. 01-07			SCALE: NONE	SHEET NO. 1 OF 1 SHEETS	STA.	TO STA.	FED. ROAD DIST. NO. 1 ILLINOIS FED. AID PROJECT	