

F.A.U. RTE.	SECTION	COUNTY	TOTAL SHEETS	SHEET NO.
0323	121 RS-1	WILL	19	1
FED. ROAD DIST. NO. 1	ILLINOIS	CONTRACT NO. 60H98		

STATE OF ILLINOIS
DEPARTMENT OF TRANSPORTATION
DIVISION OF HIGHWAYS
**PROPOSED
HIGHWAY PLANS**

F.A.U. 0323 (IL 126)
SECTION 121 RS-1
US 30 (LOCKPORT STREET) TO I-55
RESURFACING (3P)

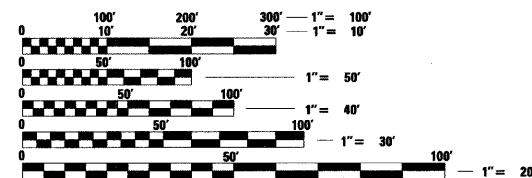
WILL COUNTY
C-91-838-09

FOR INDEX OF SHEETS, SEE SHEET NO. 2

THESE IMPROVEMENTS ARE LOCATED
WITHIN THE VILLAGE OF PLAINFIELD AND
WILL COUNTY UNINCORPORATED AREA

TRAFFIC DATA

2007 ADT - 15,800
POSTED SPEED LIMIT - 55 MPH FROM 143RD STREET TO I-55
- 40 MPH FROM US 30 TO 143RD STREET



FULL SIZE PLANS HAVE BEEN PREPARED USING STANDARD
ENGINEERING SCALES. REDUCED SIZED PLANS WILL NOT
CONFORM TO STANDARD SCALES. IN MAKING MEASUREMENTS
ON REDUCED PLANS, THE ABOVE SCALES MAY BE USED.

J.U.L.I.E.
JOINT UTILITY LOCATION INFORMATION FOR EXCAVATION
1-800-892-0123
OR 811

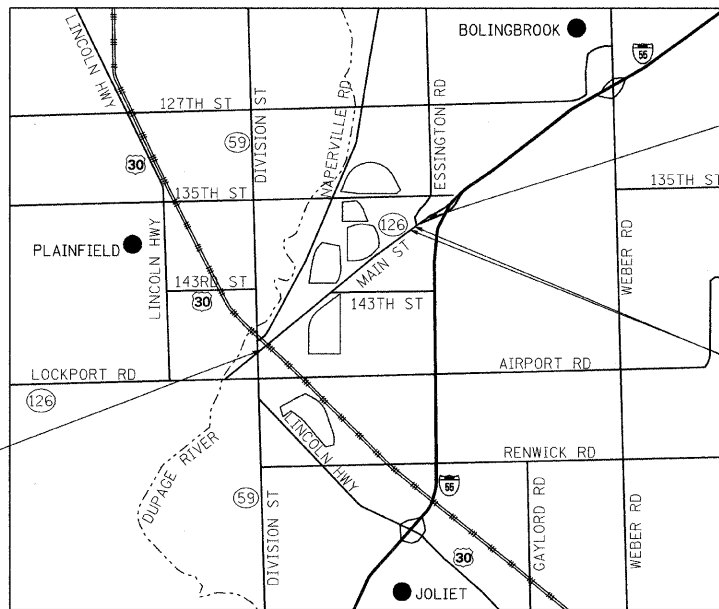
Giorba Group, Inc.

DESIGN FIRM
REGISTRATION NUMBER
184-001016

CONSULTING ENGINEERS
SUITE 402, 5507 NORTH CUMBERLAND AVE
CHICAGO, ILLINOIS 60656 ☎ (773) 775-4009

PLAINFIELD TOWNSHIP
LOCATION MAP
1" = 5,000'

GROSS LENGTH OF PROJECT = 12,996 FT = 2.46 MI.
NET LENGTH OF PROJECT = 11,983 FT = 2.27 MI.



BEGIN PROJECT
STA. 16+64

END PROJECT
STA. 145+95 /
STA. 246+60

STA. 130+05
OMISSION
STA. 143+38/
STA. 240+18

D-91-838-09



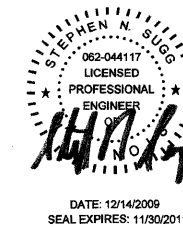
LOCATION OF SECTION INDICATED THIS: - [Symbol] -

STATE OF ILLINOIS
DEPARTMENT OF TRANSPORTATION
DIVISION OF HIGHWAYS

SUBMITTED December 8, 2009
Dion M. O'Keefe
DEPUTY DIRECTOR OF HIGHWAYS, REGION ENGINEER

January 29, 2010
Scott E. Shelt P.E.
Acting ENGINEER OF DESIGN AND ENVIRONMENT

January 29, 2010
Christine M. Reed
DIRECTOR OF HIGHWAYS, CHIEF ENGINEER



PRINTED BY THE AUTHORITY
OF THE STATE OF ILLINOIS

DATE: 12/14/2009
SEAL EXPIRES: 11/30/2011

DISTRICT 1 DESIGN PLAN PREPARATION ENGINEER: K. ENG (847)705-4247

CONTRACT NO. 60H98