

| ROUTE | SECTION | COUNTY | TOTAL SHEETS | SHEET NUMBER |
|---------|------------|--------|--------------|--------------|
| FAP 852 | 2009-073 I | WILL | 8 | 1 |

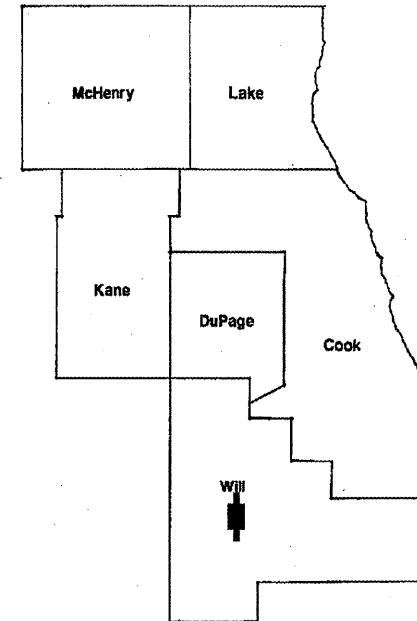
FOR INDEX OF SHEETS SEE SHEET 2

CONTRACT NO. 60H83
D-91-819-09

STATE OF ILLINOIS
DEPARTMENT OF TRANSPORTATION
DIVISION OF HIGHWAYS
DISTRICT ONE
PROPOSED HIGHWAY PLANS

FAP RTE. 852: U.S. 52
VARIOUS LOCATIONS ON U.S. 52
FROM IL 53 TO N/O JOLIET RD.
SECTION: 2009-073 I
SHOULDER REPAIR
WILL COUNTY
C-91-819-09

IMPROVEMENTS ARE
LOCATED IN THE VILLAGE OF
MANHATTAN, AND THE CITY
OF JOLIET AND JOLIET,
MANHATTAN, NEW LENOX AND
WILTON TOWNSHIPS



START OF IMPROVEMENT

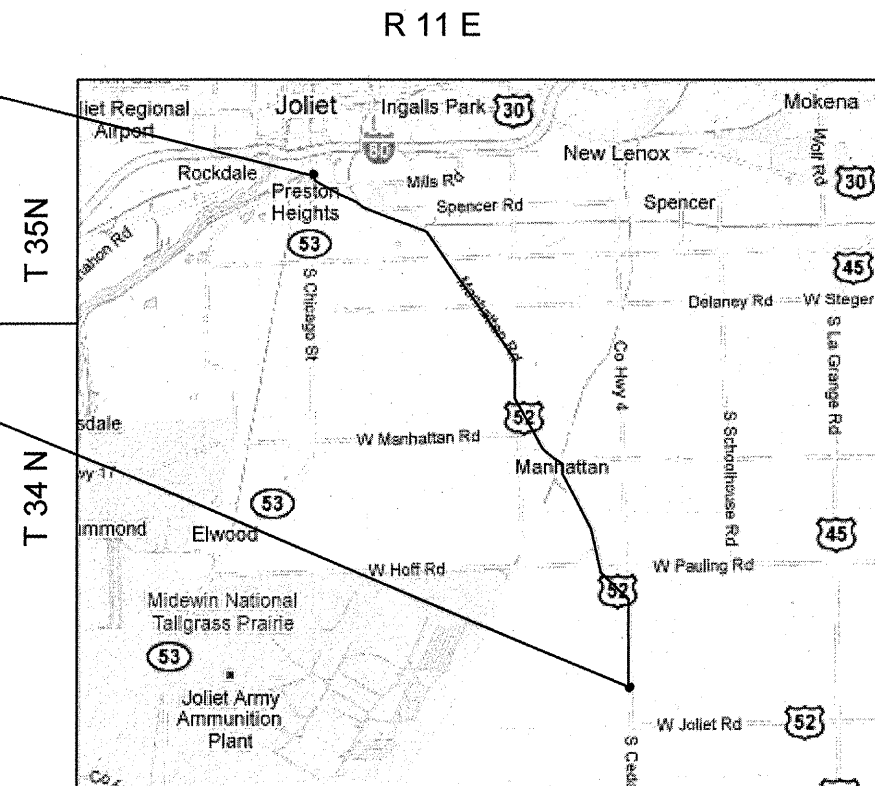
END OF IMPROVEMENT

TRAFFIC DATA:

2007 ADT = 7000-11200
POSTED SPEED LIMIT = 55 MPH

PROJECT ENGINEER ROBERT BORO (847) 705-4178
PROJECT MANAGER KEN ENG

CONTRACT NO. 60H83



JOLIET, MANHATTAN, NEW LENOX, AND WILTON TOWNSHIPS
GROSS LENGTH OF IMPROVEMENT = 66000 FT = 12.5 mi
NET LENGTH OF IMPROVEMENT = 29040 FT = 5.5 mi.

LOCATION OF IMPROVEMENT INDICATED THIS:

STATE OF ILLINOIS
DEPARTMENT OF TRANSPORTATION
DIVISION OF HIGHWAYS
SUBMITTED: DECEMBER 30, 2009
Diane M. O'Keefe
DEPUTY DIRECTOR OF HIGHWAYS, REGION ENGINEER
January 29, 2010
Scott E. Stitt P.E.
ACTING ENGINEER OF DESIGN AND ENVIRONMENT
January 29, 2010
Christine R. Reed
DIRECTOR OF HIGHWAYS, CHIEF ENGINEER

**PRINTED BY THE AUTHORITY
OF THE STATE OF ILLINOIS**

J.U.L.I.E.: JOINT UTILITY LOCATION
INFORMATION FOR EXCAVATION
(800) 892-0123 OR 811

| ROUTE | SECTION | COUNTY | TOTAL SHEETS | SHEET NUMBER |
|---------|------------|--------|--------------|--------------|
| FAP 852 | 2009-073 I | WILL | 8 | 2 |

CONTRACT NO. 60H83

INDEX OF SHEETS

- 1 TITLE SHEET
- 2 INDEX OF SHEETS, STATE STANDARDS AND GENERAL NOTES
- 3 SUMMARY OF QUANTITIES
- 4 SCHEDULE OF QUANTITIES
- 5 LOCATION MAP
- 6 TYPICAL SECTIONS
- 7 TRAFFIC CONTROL AND PROTECTION FOR SIDE ROADS, INTERSECTIONS AND DRIVEWAYS (TC-10)
- 8 ARTERIAL ROAD INFORMATION SIGN (TC-22)

STATE STANDARDS

- 701006-03 OFF-ROAD OPERATIONS 2L, 2W, MORE THAN 15' FROM PAVEMENT EDGE
- 701011-02 OFF-ROAD OPERATIONS 2L, 2W, 15' TO 24" FROM PAVEMENT EDGE
- 701101-02 OFF-ROAD OPERATIONS, MULTILANE, 15' TO 24" FROM PAVEMENT EDGE
- 701301-03 LANE CLOSURE 2L, 2W, SHORT TIME OPERATIONS
- 701306-02 LANE CLOSURE 2L, 2W, SLOW MOVING OPERATIONS, DAY ONLY, FOR SPEEDS > 45 MPH
- 701901-01 TRAFFIC CONTROL DEVICES

GENERAL NOTES

BEFORE STARTING ANY EXCAVATION, THE CONTRACTOR SHALL CALL "J.U.L.I.E." AT (800) 892-0123 OR 811 FOR FIELD LOCATIONS OF BURIED ELECTRIC, TELEPHONE AND GAS UTILITIES. 48 HOUR NOTIFICATION IS REQUIRED.

THE CONTRACTOR SHALL COORDINATE CONSTRUCTION ACTIVITIES WITH UTILITY COMPANIES, VILLAGE OF MANHATTAN, CITY OF JOLIET.

IT SHALL BE THE CONTRACTOR'S RESPONSIBILITY TO VERIFY ALL DIMENSIONS & CONDITIONS EXISTING IN THE FIELD PRIOR TO CONSTRUCTION & ORDERING OF MATERIALS.

THE CONTRACTOR WILL NOT BE ALLOWED TO SET UP A YARD OR FIELD OFFICE ON STATE PROPERTY WITHOUT WRITTEN PERMISSION FROM THE DEPARTMENT.

THE CONTRACTOR SHALL CONTACT THE DISTRICT ONE TRAFFIC CONTROL SUPERVISOR AT (847) 705-4470 A MINIMUM OF 72 HOURS IN ADVANCE OF BEGINNING WORK.

THE CONTRACTOR SHALL BE REQUIRED TO PROVIDE ACCESS TO ABUTTING PROPERTY AT ALL TIMES DURING THE CONSTRUCTION OF THIS PROJECT.

DO NOT SCALE PLANS FOR CONSTRUCTION DIMENSIONS.

THESE PLANS HAVE BEEN PREPARED FROM NOTES RECEIVED FROM THE BUREAU OF MAINTENANCE.

ILLINOIS DEPARTMENT OF TRANSPORTATION

INDEX OF SHEETS
STATE STANDARDS
GENERAL NOTES

| | | | | |
|--------------|----------------|---------------|---------------------|---------------------|
| ROUTE | SECTION | COUNTY | TOTAL SHEETS | SHEET NUMBER |
| FAP 852 | 2009-0731 | WILL | 8 | 3 |

CONTRACT NO. 60H83

SUMMARY OF QUANTITIES

*URBAN
100% STATE*

| CODE NUMBER | DESCRIPTION | UNIT | CONSTRUCTION TYPE CODE SFTY-2A | TOTAL QUANTITY |
|--------------------|---|-------------|---|-----------------------|
| 20201006 | GRADING AND SHAPING SHOULDERS | UNIT | | 428 |
| 48102100 | AGGREGATE WEDGE SHOULDER, TYPE B | TON | | 1251 |
| 67000400 | ENGINEER'S FIELD OFFICE, TYPE A | CAL MO | | 3 |
| 67100100 | MOBILIZATION | L SUM | | 1 |
| 70100460 | TRAFFIC CONTROL AND PROTECTION, STANDARD 701306 | L SUM | | 1 |

ILLINOIS DEPARTMENT OF TRANSPORTATION

SUMMARY OF QUANTITIES

| | | | | |
|--------------|----------------|---------------|---------------------|---------------------|
| ROUTE | SECTION | COUNTY | TOTAL SHEETS | SHEET NUMBER |
| FAP 852 | 2009-073 I | WILL | 8 | 4 |

CONTRACT NO. 60H83

| LOCATION | LENGTH ALONG US 52 | Shoulder Width | Shoulder Miles |
|---|---|----------------|----------------|
| 1) From Doris Rd. to Mills Rd. | 0.1 miles east bound side | 3 ft | 0.1 |
| 2) From 0.1 mi. east of Spencer Rd. | for 0.1 miles, east bound side | 3 ft | 0.1 |
| 3) From 0.3 mi. east of Spencer Rd. | for 0.1 miles, east bound side | 3 ft | 0.1 |
| 4) From Briggs St. east to Pinewood Lane | 0.1 miles, east bound side | 5 ft | 0.1 |
| 5) From Pinewood Lane east to Laraway Rd. | 0.4 miles east and west bound sides | 5 ft | 0.8 |
| 6) From Laraway Rd. East to Delaney Rd. | 1.1 miles east and west bound sides | 6 ft | 2.2 |
| 7) From Delaney Rd. east | For 1.1 miles east and west bound sides | 5 ft | 2.2 |
| 8) From 0.2 mi. east of Baker Rd. | For 0.2 miles east bound side | 5 ft | 0.2 |
| 9) From Gougar Rd. east | For 0.4 miles east and west bound sides | 4 ft | 0.8 |
| 10) From Cedar Rd. east | For 1.5 miles, east bound side | 3 ft | 1.5 |
| Total | 5.5 miles | | 8.1 miles |

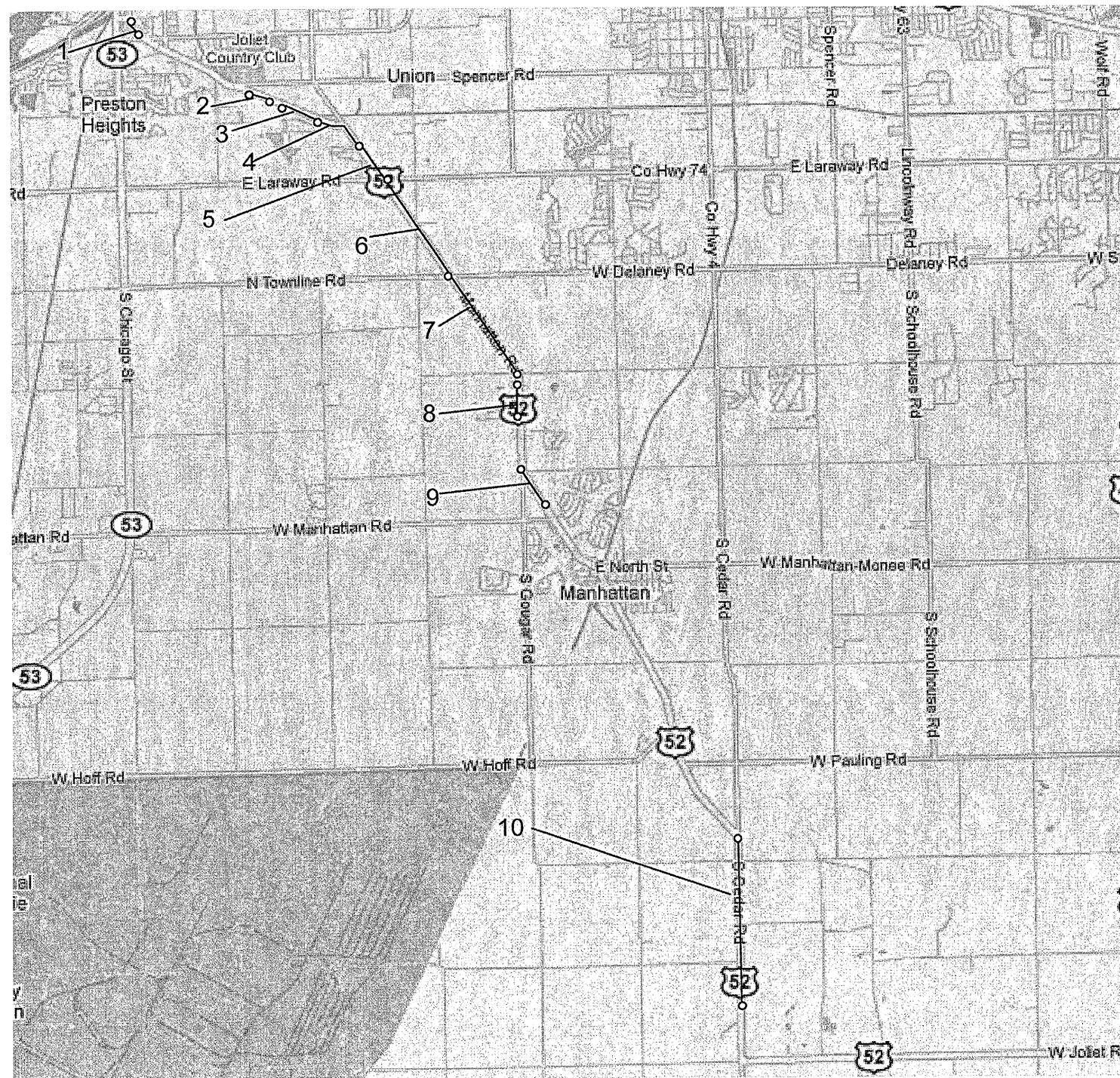
See map on sheet 5.

ILLINOIS DEPARTMENT OF TRANSPORTATION

SCHEDULE OF QUANTITIES
US 52

| ROUTE | SECTION | COUNTY | TOTAL SHEETS | SHEET NUMBER |
|---------|------------|--------|--------------|--------------|
| FAP 852 | 2009-073 I | WILL | 8 | 5 |

CONTRACT NO. 60H83



See schedule on sheet 4.
for locations 1 to 10.

ILLINOIS DEPARTMENT OF TRANSPORTATION

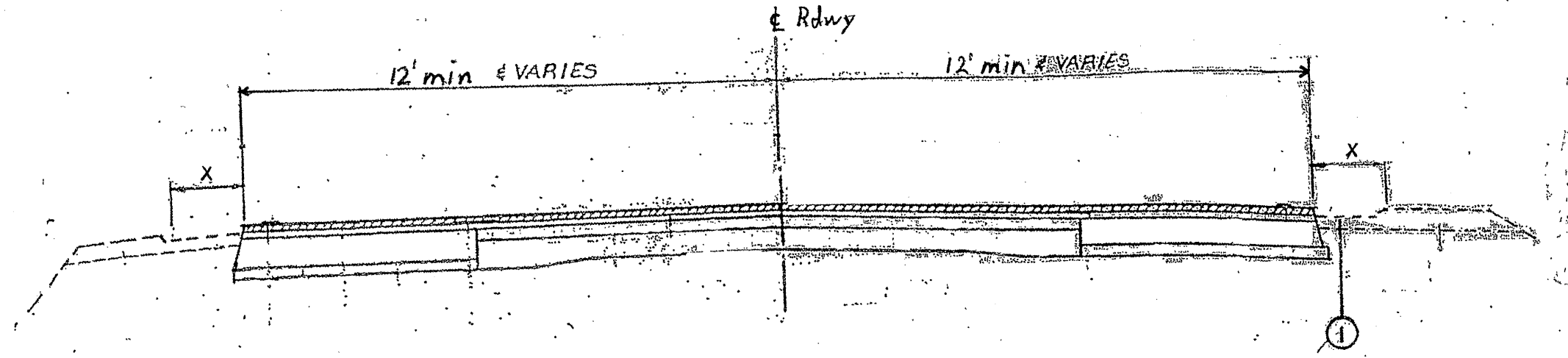
LOCATION MAP
US 52

| | | | | |
|------------------|----------------------|----------------|-------------------|-------------------|
| ROUTE FAP 852 | SECTION 2009-0731 | COUNTY WILL | TOTAL SHEETS 8 | SHEET NUMBER 6 |
|------------------|----------------------|----------------|-------------------|-------------------|

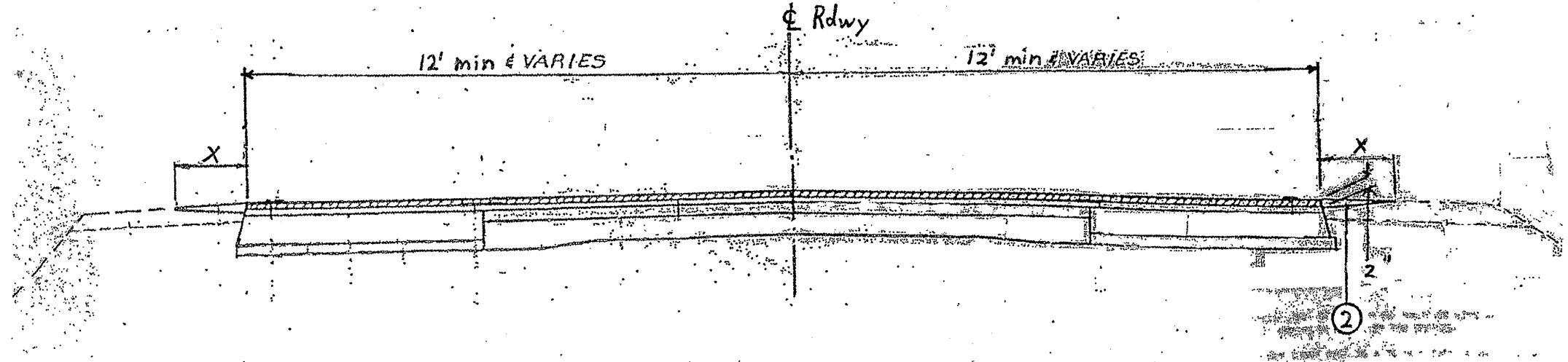
CONTRACT NO. 60H83

LEGEND

- 1. EXISTING AGGREGATE SHOULDER
 - 2. PROPOSED AGGREGATE WEDGE SHOULDER TYPE B
- X = Shoulder width to be repaired as defined on Sheet 4.



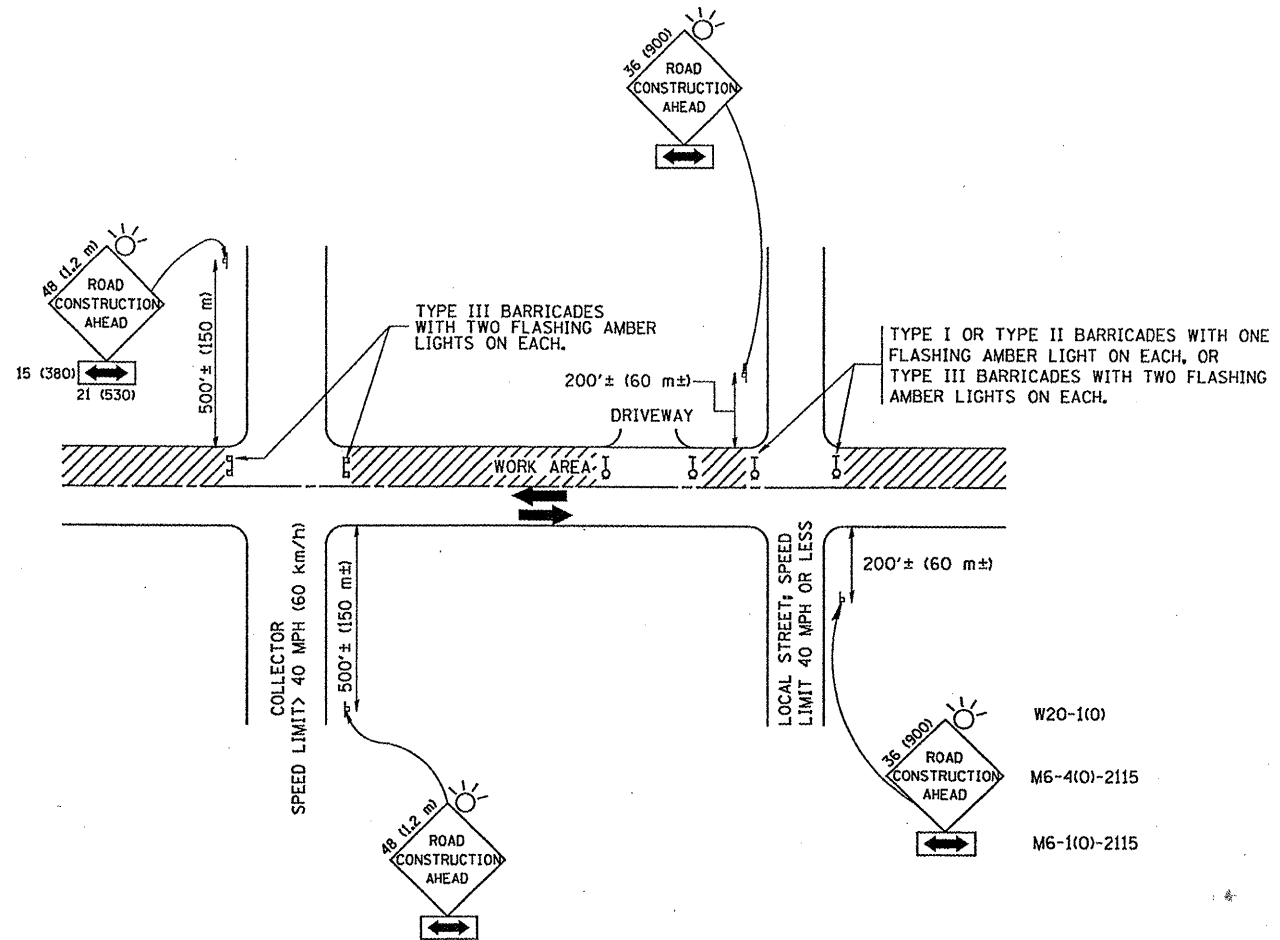
EXISTING TYPICAL SECTION
US 52



PROPOSED TYPICAL SECTION
US 52

ILLINOIS DEPARTMENT OF TRANSPORTATION

TYPICAL SECTIONS
US 52



TRAFFIC CONTROL AND PROTECTION FOR SIDE ROADS, INTERSECTIONS, AND DRIVEWAYS

NOTES:

- A. FOR NO LANE RESTRICTION ON THE SIDE ROAD OR DRIVEWAYS
 - 1. SIDE ROAD WITH A SPEED LIMIT OF 40 MPH (60 km/h) OR LESS AS SHOWN ON THE DRAWING AND AS DIRECTED BY THE ENGINEER:
 - a) ONE ROAD CONSTRUCTION AHEAD SIGN 36 x 36 (900x900) WITH A FLASHER AND FLAG MOUNTED ON IT APPROXIMATELY 200' (60 m) IN ADVANCE OF THE MAIN ROUTE.
 - b) THE CLOSED PORTION OF THE MAIN ROUTE SHALL BE PROTECTED BY BLOCKING WITH TYPE I, TYPE II OR TYPE III BARRICADES, 1/3 OF THE CROSS SECTION OF THE CLOSED PORTION.
 - 2. SIDE ROAD WITH A SPEED LIMIT GREATER THAN 40 MPH (60 km/h) AS SHOWN ON THE DRAWING AND AS DIRECTED BY THE ENGINEER:
 - a) ONE ROAD CONSTRUCTION AHEAD SIGN 48 x 48 (1.2 m x 1.2 m) WITH A FLASHER MOUNTED ON IT APPROXIMATELY 500' (150 m) IN ADVANCE OF THE MAIN ROUTE.
 - b) THE CLOSED PORTION OF THE MAIN ROUTE SHALL BE PROTECTED BY BLOCKING WITH TYPE III BARRICADES, 1/2 OF THE CROSS SECTION OF THE CLOSED PORTION.
 - 3. WHEN THE SIDE ROAD LIES BETWEEN THE BEGINNING OF THE MAINLINE SIGNING AND THE WORK ZONE, A SINGLE HEADED ARROW (M6-1) SHALL BE USED IN LIEU OF THE DOUBLE HEADED ARROW (M6-4).
- B. FOR A LANE CLOSURE ON A SIDE ROAD OR DRIVEWAY:
 - USE APPLICABLE PORTIONS OF THE TYPICAL APPLICATION OF TRAFFIC CONTROL DEVICES (STD. 701501, STD. 701606 OR THE APPROPRIATE STANDARD). THE SPACING OF SIGNS AND BARRICADES SHALL BE ADJUSTED FOR FIELD CONDITIONS AS DIRECTED BY THE ENGINEER. THE DIRECTIONAL ARROW SHALL BE COVERED OR REMOVED WHEN NO LONGER CONSISTENT WITH THE SIDE ROAD LANE CLOSURE.
 - C. ADVANCE WARNING SIGNS ARE TO BE OMITTED ON DRIVEWAY UNLESS OTHERWISE NOTED.
 - D. THE TRAFFIC CONTROL AND PROTECTION FOR SIDE ROADS, INTERSECTIONS, AND DRIVEWAYS SHALL BE INCIDENTAL TO THE COST OF SPECIFIED TRAFFIC CONTROL STANDARDS OR ITEMS.

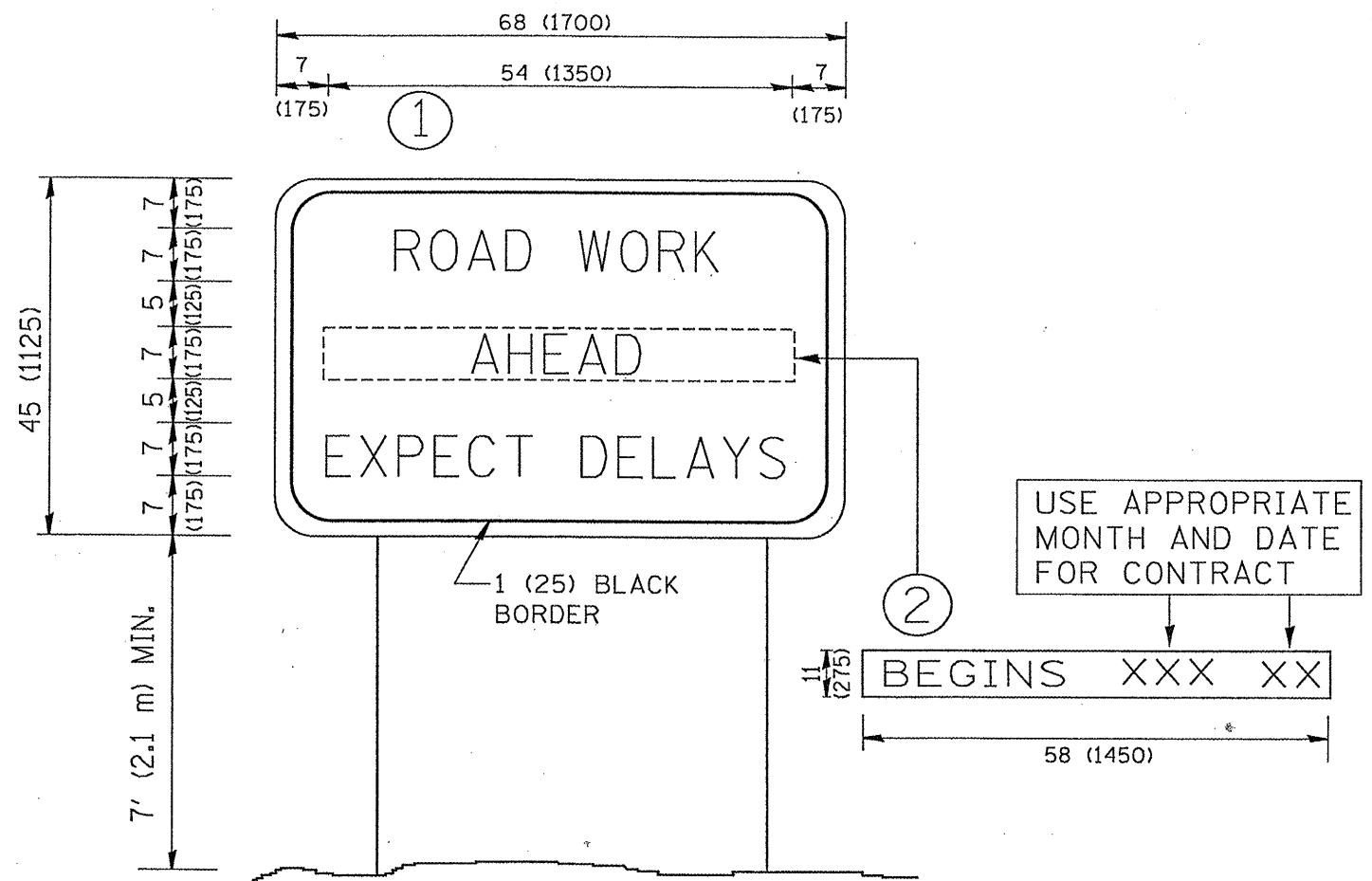
All dimensions are in millimeters (inches) unless otherwise shown.

| | | | |
|--|----------------------------|----------------|---------------------------------|
| FILE NAME = W:\distotd\22x34\to10.dgn | USER NAME = gog1enobt | DESIGNED - LHA | REVISED - J. OBERLE 10-18-95 |
| | | DRAWN - | REVISED - A. HOUSEH 03-06-96 |
| | PLOT SCALE = 50.000' / IN. | CHECKED - | REVISED - A. HOUSEH 10-15-96 |
| | PLOT DATE = 1/4/2000 | DATE - 06-89 | REVISED - T. RAMMACHER 01-06-00 |

STATE OF ILLINOIS
DEPARTMENT OF TRANSPORTATION

| | | | |
|--|-------------------------|------|---------|
| TRAFFIC CONTROL AND PROTECTION FOR SIDE ROADS, INTERSECTIONS, AND DRIVEWAYS | | | |
| SCALE: NONE | SHEET NO. 1 OF 1 SHEETS | STA. | TO STA. |

| | | | | |
|---|-----------|--------|--------------------|-----------|
| F.A.P. RTE. | SECTION | COUNTY | TOTAL SHEETS | SHEET NO. |
| 852 | 2009-0731 | WILL | 8 | 7 |
| TC-10 | | | CONTRACT NO. 60183 | |
| FED. ROAD DIST. NO. 1 ILLINOIS FED. AID PROJECT | | | | |



NOTES:

1. USE BLACK LETTERING ON ORANGE BACKGROUND.
2. ERECT SIGNS IN ADVANCE OF THE LOCATION FOR THE "ROAD CONSTRUCTION AHEAD" SIGN AT LOCATIONS AS DIRECTED BY THE ENGINEER.
3. ERECT SIGN ① WITH INSTALLED PANEL ② ONE WEEK PRIOR TO THE START OF CONSTRUCTION.
4. REMOVE PANEL ② SOON AFTER THE START OF CONSTRUCTION.
5. SEE SPECIAL PROVISION FOR "TEMPORARY INFORMATION SIGNING" FOR ADDITIONAL INFORMATION.
6. ONE SIGN ASSEMBLY EQUALS 25.70 SQ. FT. (2.3 SQ. M.)
7. SHALL BE PAID FOR AS TEMPORARY INFORMATION SIGNING.

ALL DIMENSIONS ARE IN INCHES (MILLIMETERS) UNLESS OTHERWISE SHOWN.

| | | | |
|--|---------------------------|------------|---------------------------------|
| FILE NAME = W:\data\td\22x34\to22.dgn | USER NAME = goglianobt | DESIGNED - | REVISED - R. MIRS 09-15-97 |
| | | DRAWN - | REVISED - R. MIRS 12-11-97 |
| | PLOT SCALE = 50.000 / IN. | CHECKED - | REVISED - T. RAMMACHER 02-02-99 |
| | PLOT DATE = 1/4/2008 | DATE - | REVISED - C. JUCIUS 01-31-07 |

STATE OF ILLINOIS
DEPARTMENT OF TRANSPORTATION

| | | |
|-----------------------------------|-------------------------|--------------|
| ARTERIAL ROAD INFORMATION SIGN | | |
| SCALE: NONE | SHEET NO. 1 OF 1 SHEETS | STA. TO STA. |

| | | | | |
|---|------------|--------------------|--------------|-----------|
| F.A.P. RTE. | SECTION | COUNTY | TOTAL SHEETS | SHEET NO. |
| 852 | 2009-073 I | WILL | 8 | 8 |
| TC-22 | | CONTRACT NO. 60483 | | |
| FED. ROAD DIST. NO. 1 (ILLINOIS) FED. AID PROJECT | | | | |