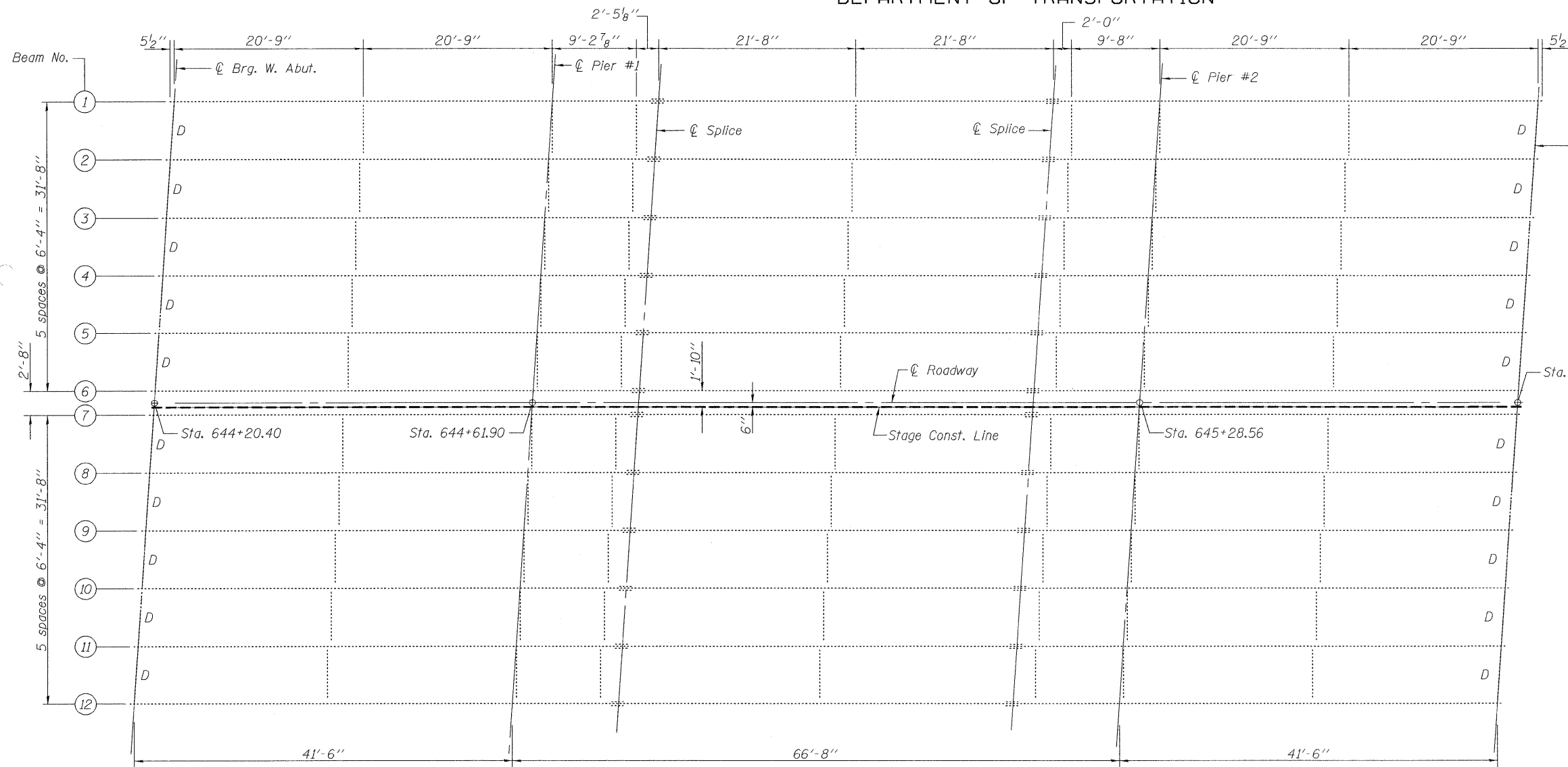


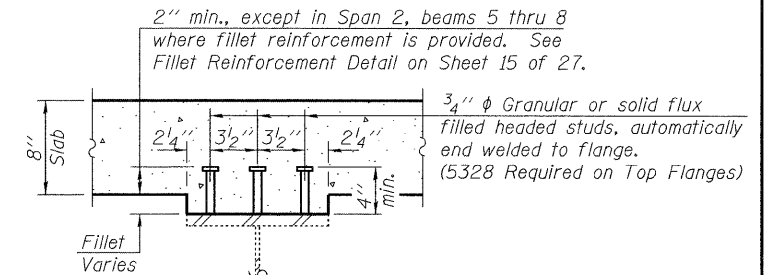
STATE OF ILLINOIS
DEPARTMENT OF TRANSPORTATION

NOTE

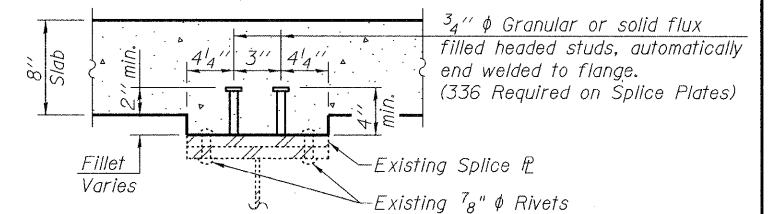
D - Indicates existing steel end diaphragms to be cleaned and incorporated into the concrete diaphragms at the abutments. Diaphragms are 12WF36, supported by 6"x4"x3/4" angles. This work will not be paid for separately, but shall be included with the cost of Concrete Removal. See General Notes for more information.



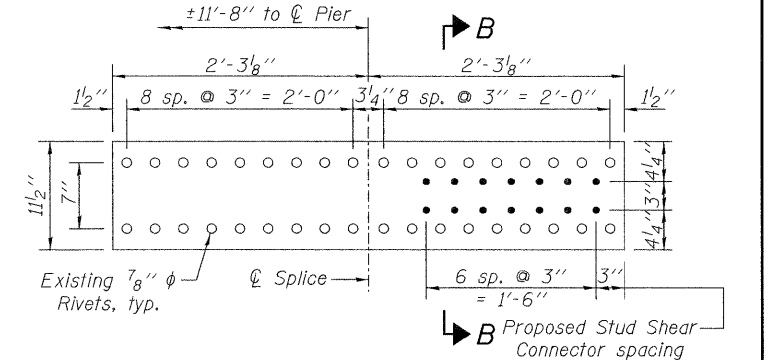
EXISTING FRAMING PLAN



SECTION A-A



SECTION B-B

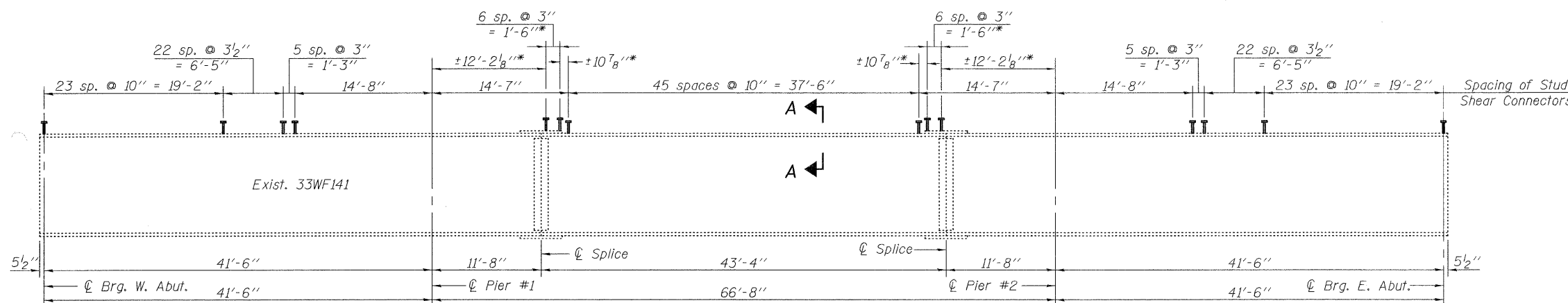


SPLICE PLATE DETAIL

Space Stud Shear Connectors along beam to maximize clearance from existing rivets.

BILL OF MATERIAL

Item	Unit	Quantity
Stud Shear Connectors	Each	5664



EXISTING GIRDER ELEVATION

* Place shear studs on top of Splice Plates according to Splice Plate Detail on this sheet.

DESIGNED	JMT
CHECKED	BLB
DRAWN	JMT
CHECKED	BLB

**FRAMING PLAN
STRUCTURE NO. 022-0033**

rjngroup
Excellence through Ownership
200 West Front Street
Wheaton, IL 60187

SHEET NO. 19
27 SHEETS

F.A.P. RTE.	SECTION	COUNTY	TOTAL SHEETS	SHEET NO.
311	10HB-R	Du Page	53	35
CONTRACT NO. 60B92				
FED. ROAD DIST. NO. ILLINOIS FED. AID PROJECT				