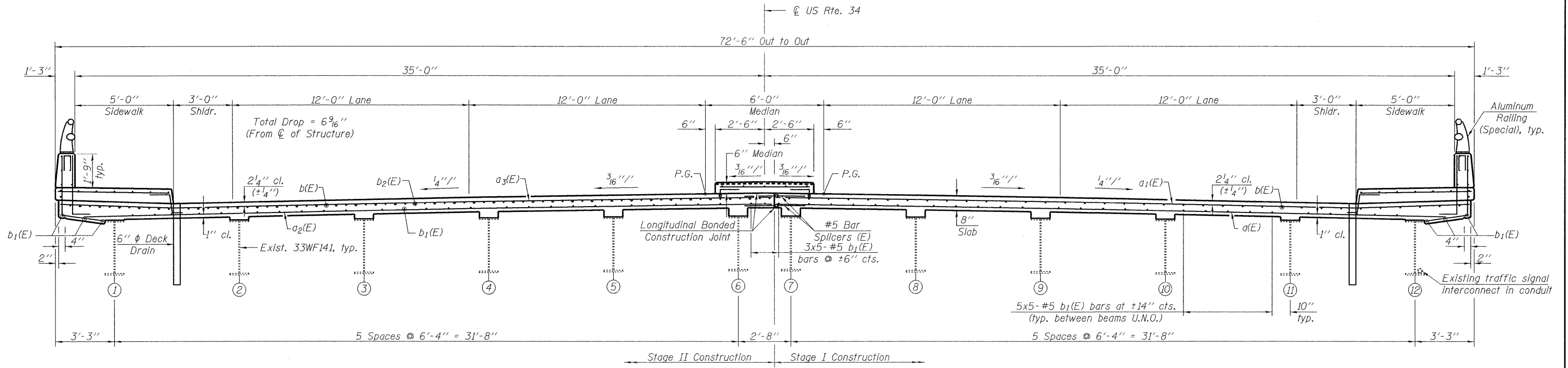


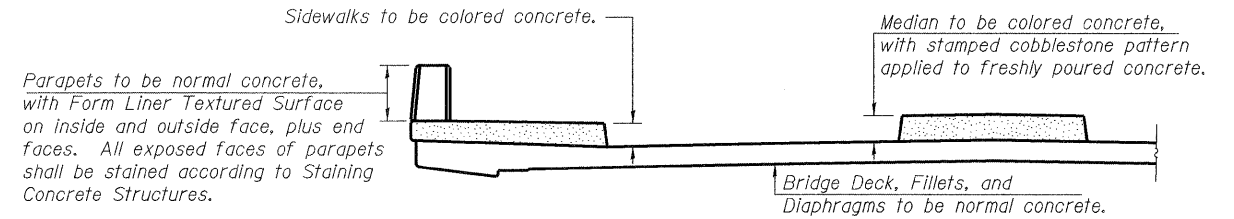
STATE OF ILLINOIS
DEPARTMENT OF TRANSPORTATION



AT PIER

DECK CROSS SECTION
(Looking East)

AT MIDSPAN



CONCRETE TREATMENTS

CONCRETE TREATMENT NOTES

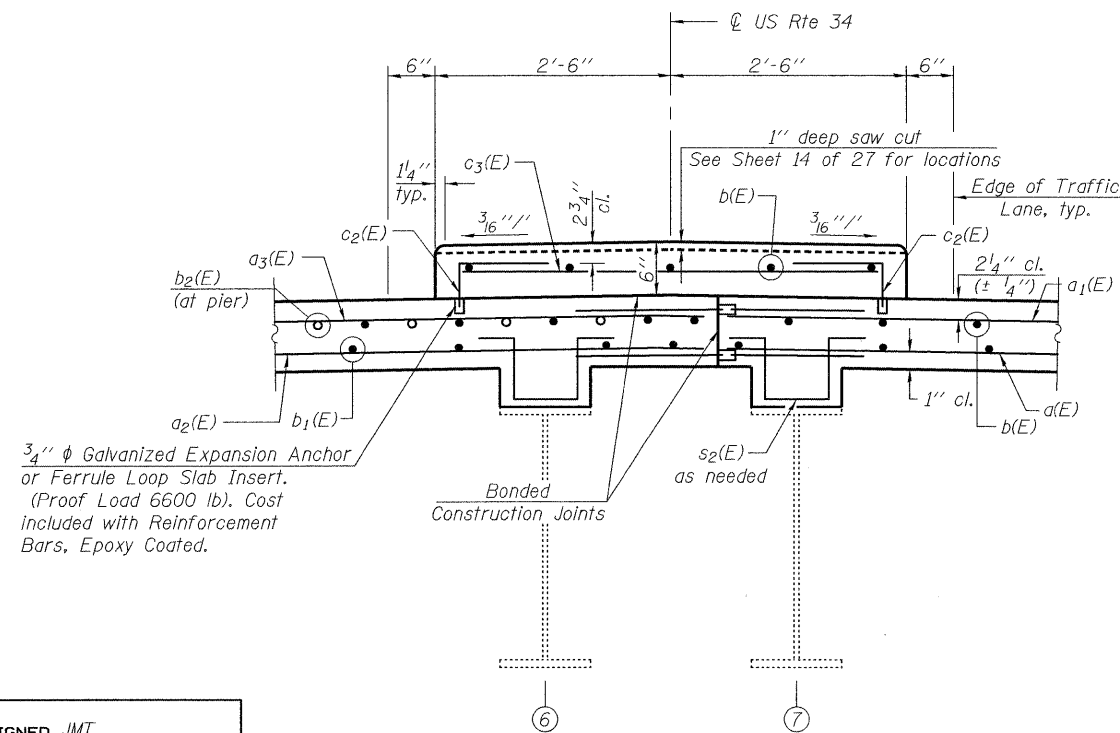
Coloring admixture shall be "Santa Fe Buff", color number L1447 by Butterfield Color, or approved equal. Contractor shall submit a sample for approval prior to construction according to the Special Provision for Concrete Median (Special). See Special Provision for more information.

Stamped pattern applied to top surface of Median shall be "Cobblestone - Random Interlocking" by Scofield Systems, or approved equal. Installation shall be according to manufacturer's recommendations. Contractor shall submit a sample for approval by the Village of Lisle, at least 30 days prior to pouring the median.

Color additive in bridge and approach slab (Median and Sidewalks), and stamped Cobblestone pattern on bridge and approach slab (Median), plus any required samples to be submitted for approval, will not be paid for separately, but shall be included with the unit price bid for Concrete Superstructure.

Form Liner on bridge and approach slab (Parapets) shall be Customrock pattern #12021 - "Ashlar", or approved equal. Contractor shall submit a sample for approval by the Village of Lisle according to the requirements of Article 503.06(a) of the Standard Specifications. This sample shall also display an example of the proposed staining method for Staining Concrete Structures. Cost included with Form Liner Textured Surface.

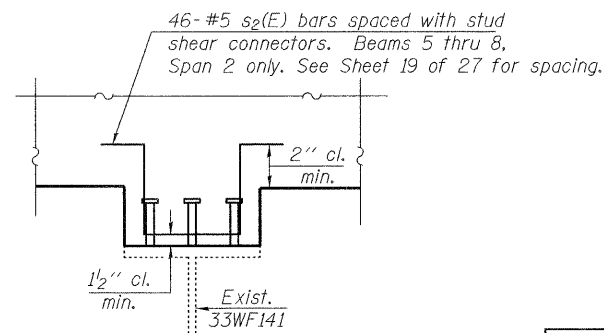
Staining of concrete parapets shall be done in accordance with the Special Provision for Staining Concrete Structures. Contractor shall exercise care when staining to avoid coloring the Aluminum Railing.



MEDIAN CROSS SECTION
(Looking East)

NOTES

Median to be constructed after completion of Stage II Construction. See Sheet 17 of 27 for Parapet Details. U.N.O. = Unless Noted Otherwise.



FILLET REINFORCEMENT DETAIL

DESIGNED	JMT
CHECKED	BLB
DRAWN	JMT
CHECKED	BLB

DECK SECTIONS & DETAILS
STRUCTURE NO. 022-0033

rjngroup Excellence through Ownership 200 West Front Street Wheaton, IL 60187	SHEET NO. 15	F.A.P. RTE. 311	SECTION 10HB-R	COUNTY Du Page	TOTAL SHEETS 53	SHEET NO. 31
	27 SHEETS	CONTRACT NO. 60B92			FED. ROAD DIST. NO. ILLINOIS FED. AID PROJECT	