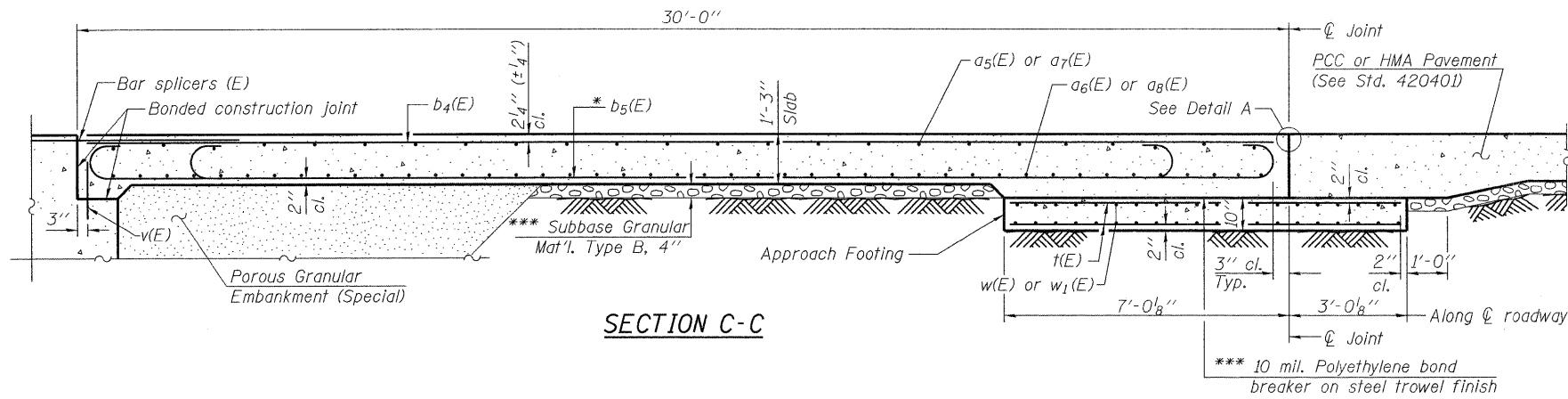
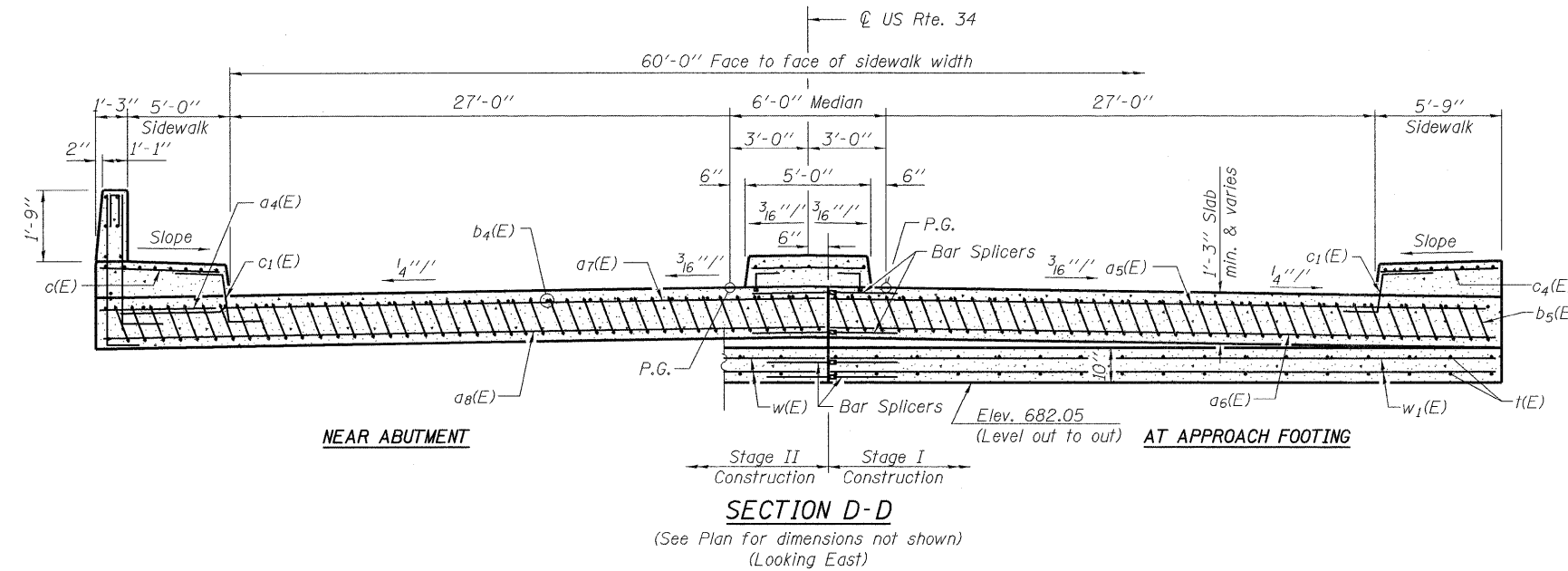


STATE OF ILLINOIS
DEPARTMENT OF TRANSPORTATION

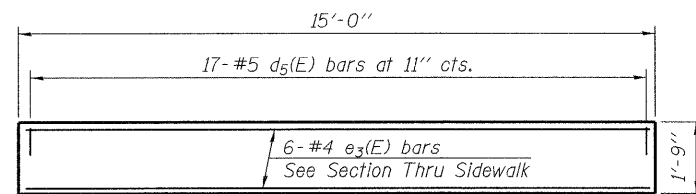


SECTION C-C



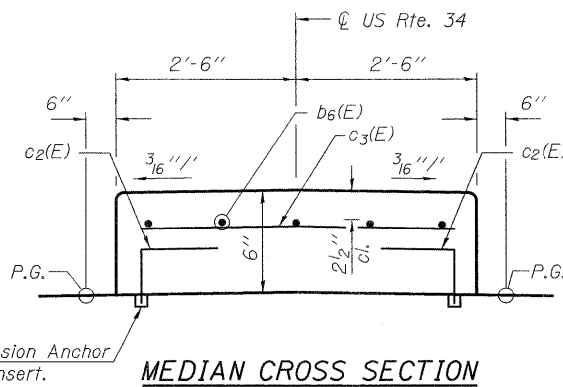
SECTION D-D

(See Plan for dimensions not shown)
(Looking East)

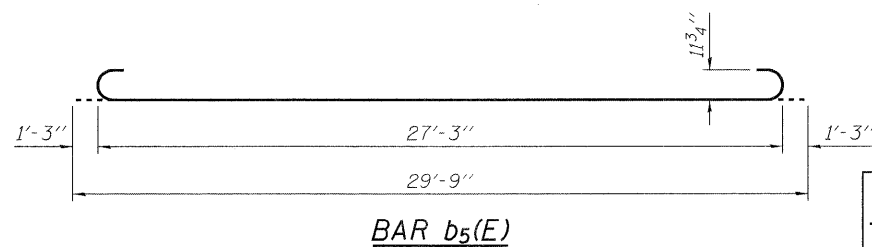


BAR d5(E)

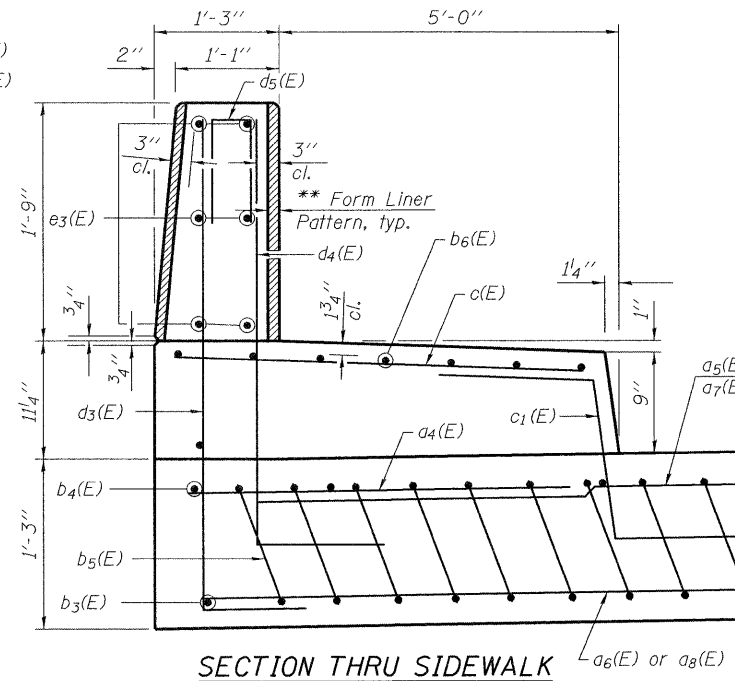
BARS d3(E) and d4(E)



MEDIAN CROSS SECTION



BAR b5(E)



SECTION THRU SIDEWALK

** Depth of form liner pattern shall not exceed 1 1/2".

Notes:

- See sheet 12 of 27 for Detail A.
- Approach slab, sidewalk and parapet concrete shall be paid for as Concrete Superstructure.
- Approach footing concrete shall be paid for as Concrete Structures.
- Reinforcement shall be paid for as Reinforcement Bars, Epoxy Coated.
- Approach Slab median to receive same treatment as Bridge median. See Sheet 15 of 27.
- For v(E) bar details, see sheet 17 of 27.
- The approach footing maximum applied service bearing pressure (Qmax) = 2.0 ksf.
- For bar splicer details, see sheet 26 of 27.
- Cost of excavation for approach footing included with Concrete Structures.
- For Porous Granular Embankment (Special) and drainage treatment details, see sheet 2 of 27.
- See Sheet 15 of 27 for Form Liner note.
- See Sheet 17 of 27 for detail of c1(E) and c2(E) bars.
- Median to be constructed after completion of Stage II Construction.

* Tilt #9 b5(E) bars as required to maintain clearance.

*** Cost included with Concrete Superstructure.

TWO APPROACHES
BILL OF MATERIAL

Bar	No.	Size	Length	Shape
a4(E)	48	#6	6'-0"	—
a5(E)	50	#4	35'-4"	—
a6(E)	92	#5	35'-4"	—
a7(E)	50	#4	36'-4"	—
a8(E)	92	#5	36'-4"	—
b3(E)	4	#4	14'-8"	—
b4(E)	144	#4	29'-8"	—
b5(E)	342	#9	29'-9"	—
b6(E)	42	#5	29'-9"	—
c(E)	60	#5	5'-10"	—
c1(E)	120	#5	2'-5"	—
c2(E)	120	#5	1'-7"	—
c3(E)	60	#5	4'-9"	—
c4(E)	60	#5	5'-6"	—
d3(E)	68	#5	4'-5"	L
d4(E)	68	#5	4'-1"	L
d5(E)	68	#5	2'-0"	Π
e3(E)	24	#4	14'-9"	—
t(E)	288	#4	9'-9"	—
w(E)	80	#5	35'-10"	—
w1(E)	80	#5	34'-10"	—
Concrete Superstructure		Cu. Yd.	246.8	
Concrete Structures		Cu. Yd.	44.2	
Form Liner Textured Surface		Sq. Ft.	219	
Reinforcement Bars, Epoxy Coated		Pound	58,760	
Bar Splicers		Each	222	
Staining Concrete Structures		Sq. Yd.	31.5	

Curing compound shall not be applied to the concrete parapets before Staining Concrete Structures is complete. See Special Provisions.

APPROACH SLAB DETAILS - II
STRUCTURE NO. 022-0033

DESIGNED	JMT
CHECKED	BLB
DRAWN	JMT
CHECKED	BLB

rjngroup
Excellence through Ownership
200 West Front Street
Wheaton, IL 60187

SHEET NO. 13
27 SHEETS

F.A.P. RTE.	SECTION	COUNTY	TOTAL SHEETS	SHEET NO.
311	10HB-R	Du Page	53	29
CONTRACT NO. 60B92				
FED. ROAD DIST. NO. ILLINOIS FED. AID PROJECT				