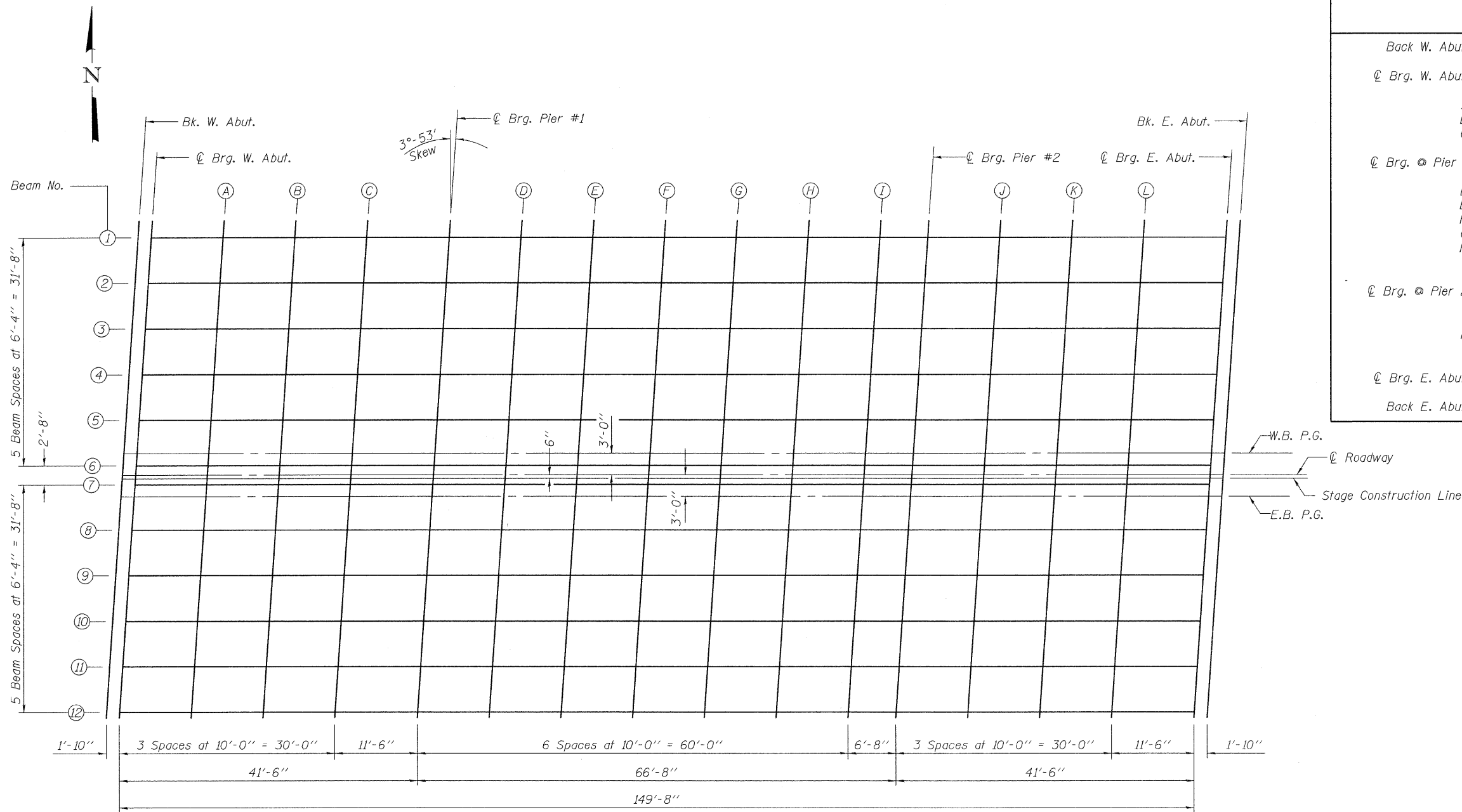


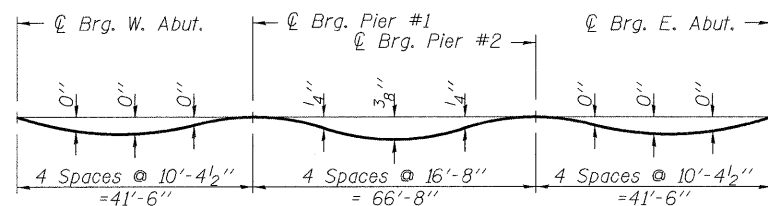
STATE OF ILLINOIS
DEPARTMENT OF TRANSPORTATION

BEAM 1



Location	Station	Offset	Theoretical Grade Elevations	Theoretical Grade Elevations Adjusted For Dead Load Deflection
Back W. Abut.	644+20.80	-33.00	684.38	684.38
☉ Brg. W. Abut.	644+22.64	-33.00	684.39	684.39
A	644+32.64	-33.00	684.43	684.44
B	644+42.64	-33.00	684.47	684.48
C	644+52.64	-33.00	684.51	684.50
☉ Brg. ☉ Pier 1	644+64.14	-33.00	684.53	684.53
D	644+74.14	-33.00	684.55	684.57
E	644+84.14	-33.00	684.56	684.60
F	644+94.14	-33.00	684.57	684.61
G	645+04.14	-33.00	684.56	684.61
H	645+14.14	-33.00	684.55	684.58
I	645+24.14	-33.00	684.54	684.55
☉ Brg. ☉ Pier 2	645+30.80	-33.00	684.52	684.52
J	645+40.80	-33.00	684.50	684.49
K	645+50.80	-33.00	684.46	684.46
L	645+60.80	-33.00	684.42	684.42
☉ Brg. E. Abut.	645+72.30	-33.00	684.36	684.36
Back E. Abut.	645+74.14	-33.00	684.35	684.35

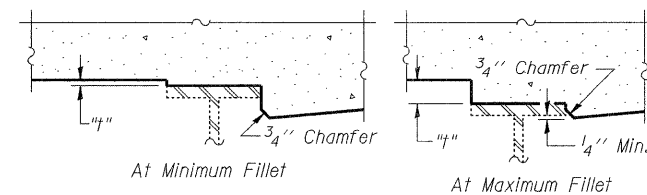
PLAN



DEAD LOAD DEFLECTION DIAGRAM

(Includes weight of concrete only.)

Note:
The above deflections are not to be used in the field if the engineer is working from the grade elevations adjusted for dead load deflections as shown on the following sheets.



FILLET HEIGHTS

To determine "t": After all existing concrete has been removed, elevations of the top flanges of the beams shall be taken at intervals shown above. These elevations subtracted from the "Theoretical Grade Elevations Adjusted for Dead Load Deflection" shown on the following sheets, minus slab thickness, equals the fillet heights "t" above top flange of beams.

DESIGNED	JMT
CHECKED	BLB
DRAWN	JMT
CHECKED	BLB

TOP OF SLAB ELEVATIONS - I
STRUCTURE NO. 022-0033

rjngroup Excellence through Ownership 200 West Front Street Wheaton, IL 60187	SHEET NO. 4 27 SHEETS	F.A.P. RTE.	SECTION	COUNTY	TOTAL SHEETS	SHEET NO.
		311	10HB-R	Du Page	53	20
		CONTRACT NO. 60B92				
		FED. ROAD DIST. NO. ILLINOIS FED. AID PROJECT				

8/7/2009 k:\112255\structures\final_plans\Deck Elevations.dgn