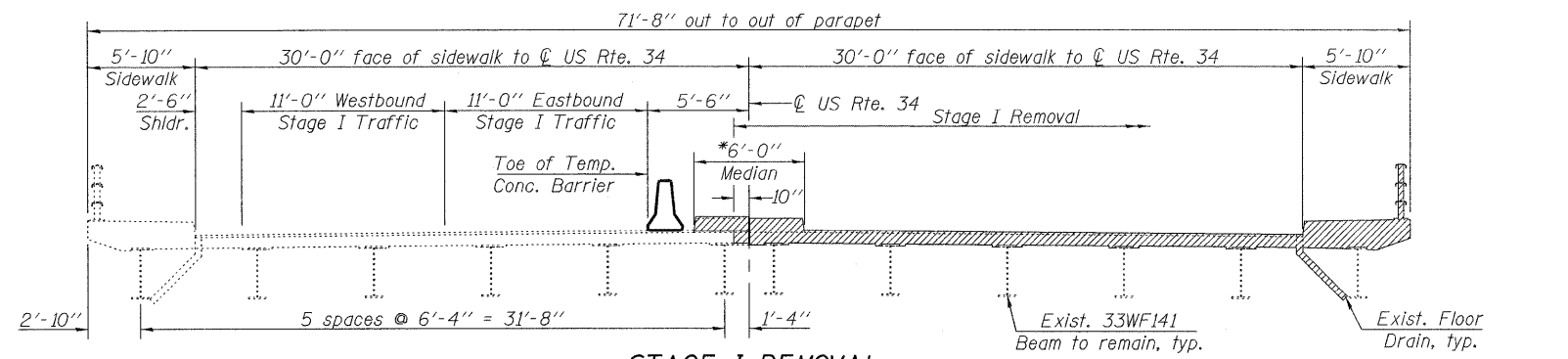


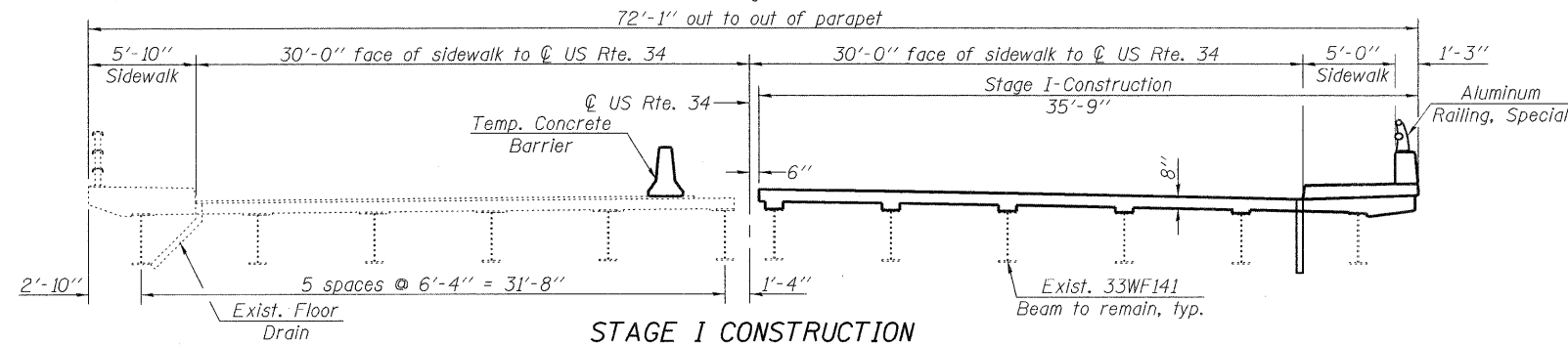
STATE OF ILLINOIS
DEPARTMENT OF TRANSPORTATION



*Median to be removed during Stage I Removal.

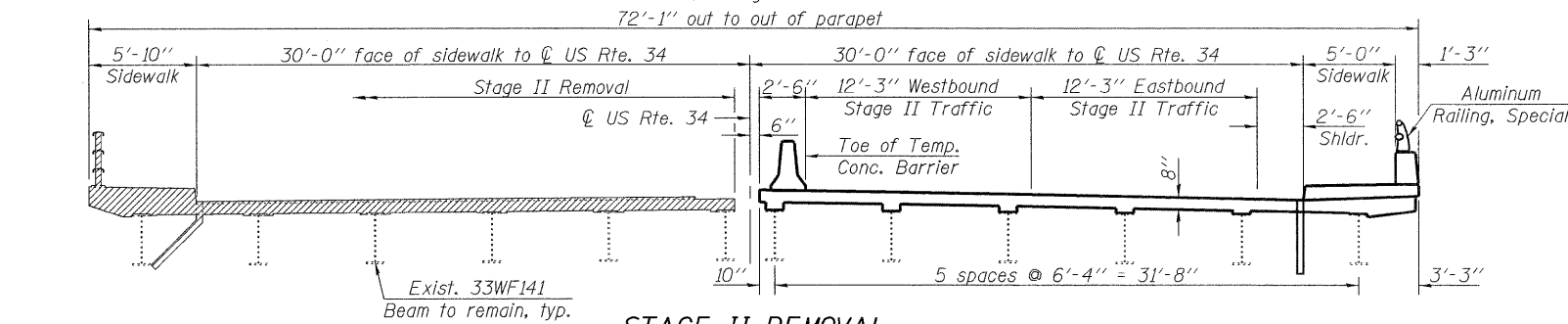
STAGE I REMOVAL

(Looking East)



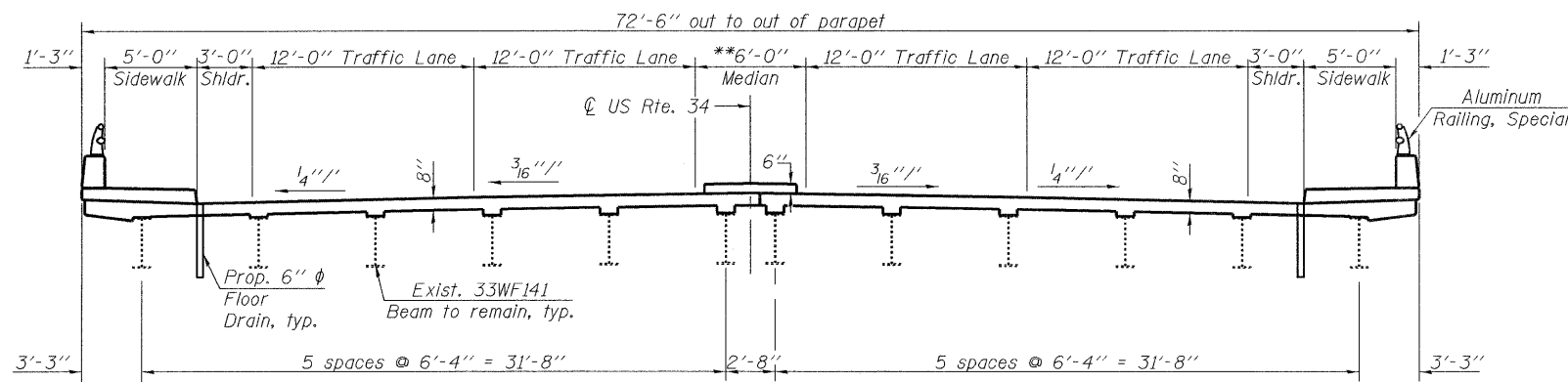
STAGE I CONSTRUCTION

(Looking East)



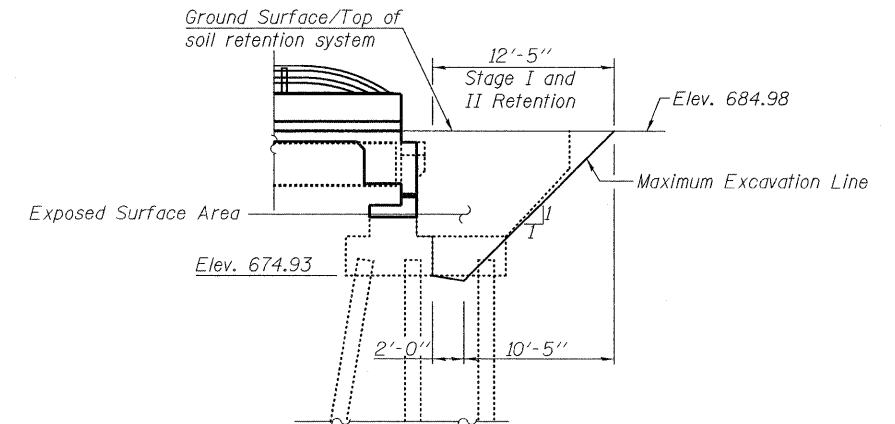
STAGE II REMOVAL

(Looking East)



STAGE II CONSTRUCTION

(Looking East)



TEMPORARY SOIL RETENTION SYSTEM

Slopes and distances shown parallel to roadway centerline.

NOTES:

- Removal of existing bridge rail and median is included with Removal of Existing Concrete Deck.
- See Sheet 27 of 27 for Temporary Concrete Barrier Details.
- Pay Item for "Temporary Concrete Barrier" is included with Roadway Plans.
- Stage Removal Line and Stage Construction Line at Abutments vary from what is shown on this sheet. See Sheets 22 and 23 of 27 for details.
- A cantilevered sheet piling design does not appear feasible and additional members or other retention systems may be necessary. The Contractor shall submit a temporary soil retention system design including plan details and calculations for review and acceptance by the Engineer.

**Raised median to be constructed after completion of Stage II Construction.

DESIGNED	JMT
CHECKED	BLB
DRAWN	JMT
CHECKED	BLB

LEGEND:

Removal of Existing Concrete Deck

rjngroup
Excellence through Ownership
200 West Front Street
Wheaton, IL 60187

SHEET NO. 3
27 SHEETS

F.A.P. RTE.	SECTION	COUNTY	TOTAL SHEETS	SHEET NO.
311	10HB-R	Du Page	53	19
CONTRACT NO. 60B92				
FED. ROAD DIST. NO. _ ILLINOIS FED. AID PROJECT				

**STAGE CONSTRUCTION DETAILS
STRUCTURE NO. 022-0033**