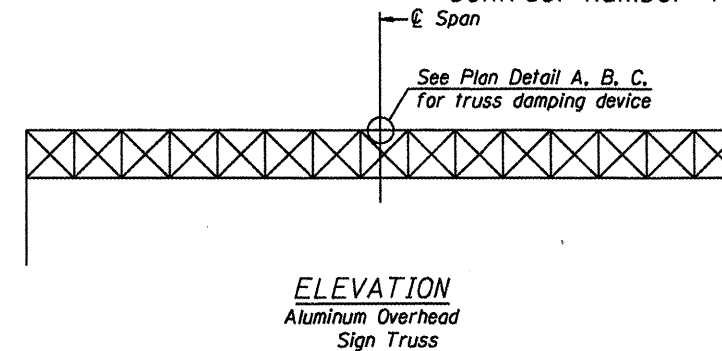
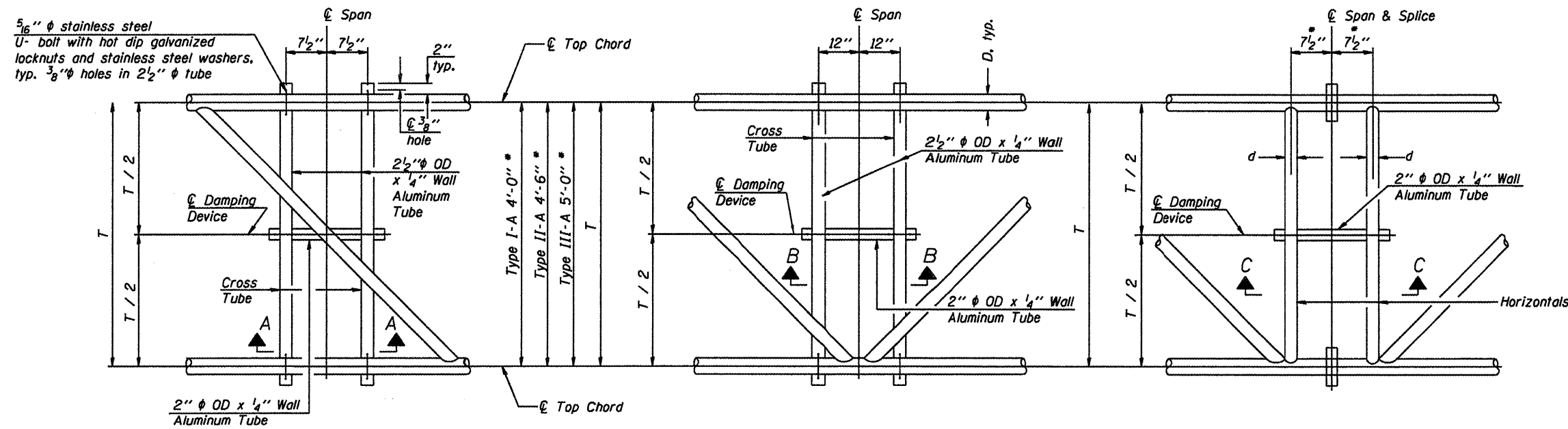


Center of horizontal to center of splice dimension may vary. Verify before drilling holes in mounting tube.



PLAN DETAIL "A"  
Span between Panel Points

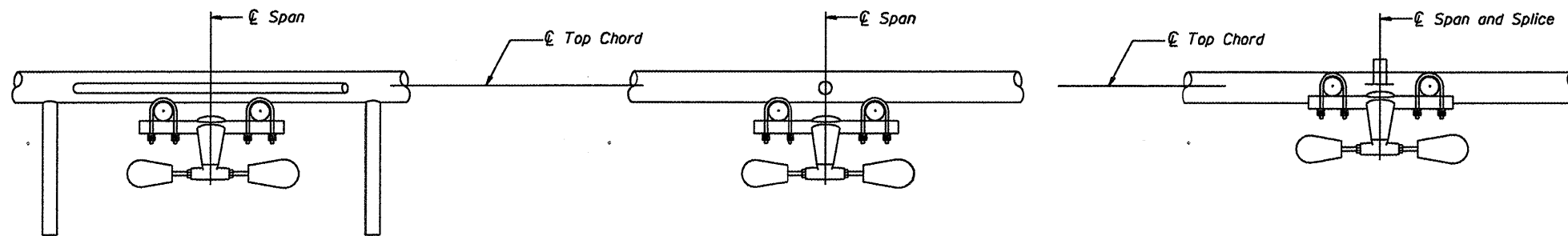
PLAN DETAIL "B"  
Span at Panel Point

PLAN DETAIL "C"  
Span at Chord Splice

ELEVATION  
Aluminum Overhead  
Sign Truss

NOTES  
Damper: One damper per truss.  
(31 lbs. Stockbridge-Type Aluminum)  
Cost included in Overhead Sign Structure...

Materials: Aluminum tubes shall be ASTM B221  
alloy 6061 temper T6. Cost included in  
Overhead Sign Structure...



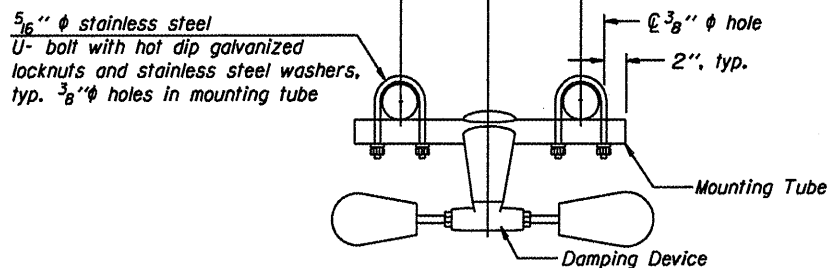
SECTION A-A

SECTION B-B

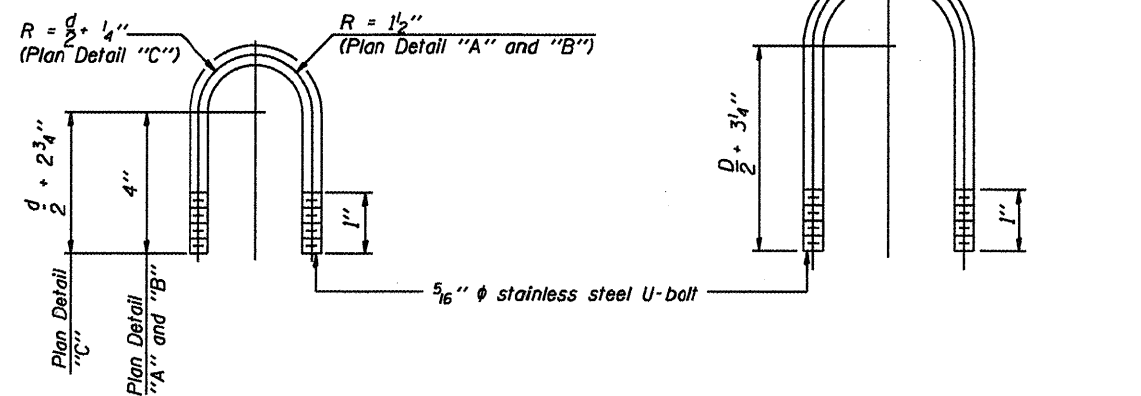
SECTION C-C

This detail applies to the  
following structures:

- Structure No. 3S0061080R060.7
- Structure No. 3S0501080R078.1
- Structure No. 3S0501080L079.4
- Structure No. 3S0501080L080.0



TRUSS DAMPING  
DEVICE CONNECTION DETAIL  
(Typical)



DAMPING DEVICE MOUNTING  
TUBE U-BOLT DETAIL  
(Typical)

TOP CHORD TO CROSS TUBE  
U-BOLT DETAIL  
(Typical - Detail "A" and "B")

OVERHEAD SIGN STRUCTURE  
DAMPING DEVICE

District 3  
Sign Structure Replacement

DESIGNED -	20
CHECKED -	EXAMINED
DRAWN -	PASSED
CHECKED -	ENGINEER OF BRIDGES AND STRUCTURES