

INDEX OF SHEETS:

- 1 COVER SHEET
- 2 SUMMARY OF QUANTITIES
- 3 GENERAL NOTES & SCHEDULE OF QUANTITIES
- 4 TYPICAL SECTIONS & DETAILS
- 5 PLAN AND PROFILE
- 6 EROSION CONTROL PLAN
- 7 DOUBLE BARREL BOX CULVERT DETAILS
- 8 BORING LOGS
- 9-11 CROSS SECTIONS

STANDARDS:

- 000001-06 STANDARD SYMBOLS, ABBREVIATIONS, AND PATTERNS
- 280001-07 TEMPORARY EROSION CONTROL SYSTEMS
- 515001-03 NAME PLATE FOR BRIDGES
- 701901-04 TRAFFIC CONTROL DEVICES
- 720011-01 METAL POSTS FOR SIGNS, MARKERS & DELINEATORS
- 728001-01 TELESCOPING STEEL SIGN SUPPORT
- 729001-01 APPLICATIONS OF TYPES A & B METAL POSTS (FOR SIGNS & MARKERS)
- BLR 21-9 TYPICAL APPLICATION OF TRAFFIC CONTROL DEVICES FOR CONSTRUCTION ON RURAL LOCAL HIGHWAYS
- BLR 22-7 TYPICAL APPLICATION OF TRAFFIC CONTROL DEVICES FOR CONSTRUCTION ON RURAL LOCAL HIGHWAYS

**FOR LIST OF UTILITIES
SEE SHEET NO. 3**

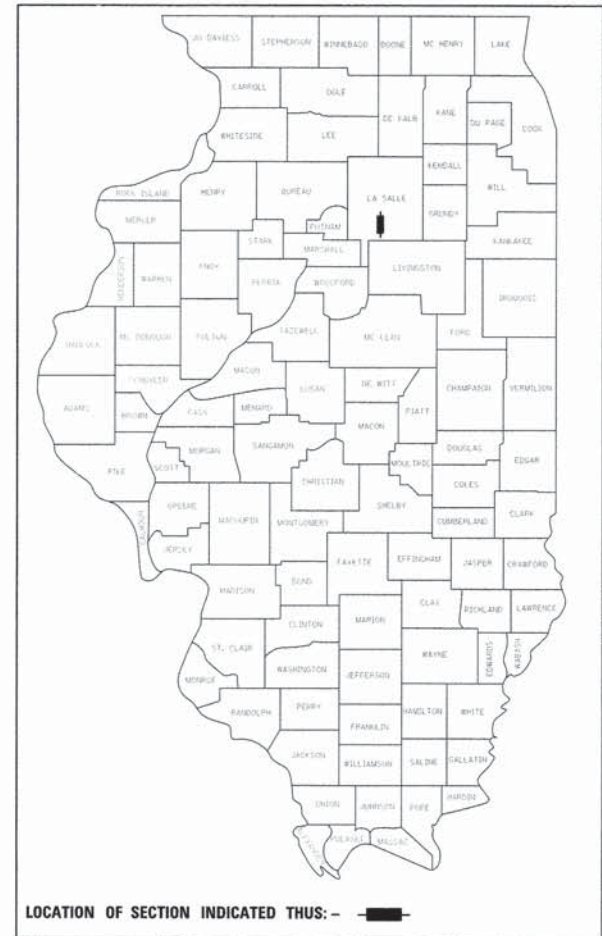
**STATE OF ILLINOIS
DEPARTMENT OF TRANSPORTATION
DIVISION OF HIGHWAYS**

**PLAN FOR PROPOSED
FEDERAL AID PROJECT
SURFACE TRANSPORTATION
RURAL – BRIDGE (FY-16)**

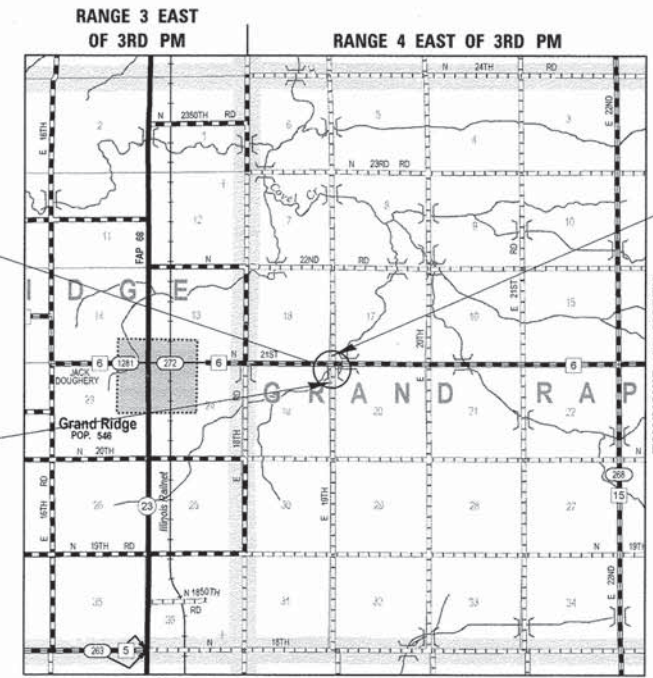
**TOWNSHIP ROUTE 322 (E 19TH ROAD)
SECTION 15-14759-00-BR
PROJECT BROS-0099(055)
STRUCTURE REPLACEMENT
GRAND RAPIDS ROAD DISTRICT
LASALLE COUNTY**

C-93-070-15

TR	SECTION	COUNTY	TOTAL SHEETS	SHEET NO.
322	15-14759-00-BR	LASALLE	11	1
WHA* 1285014		CONTRACT NO. 87624		
ILLINOIS FED. AID PROJECT BROS-0099(055)				



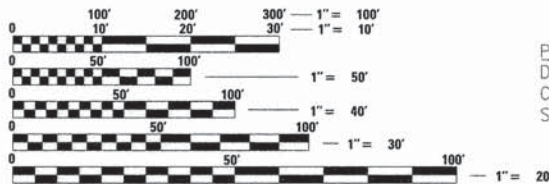
LOCATION MAP SCALE



PROPOSED STRUCTURE; SN 050-3620
DOUBLE BARREL (15'-0" X 7'-6") REINFORCED
CONCRETE CONTACT BOX CULVERT AT
STA 20+00. NO SKEW

CONSTRUCTION BEGINS
STATION 19+00.00

CONSTRUCTION ENDS
STATION 21+50.00



FULL SIZE PLANS HAVE BEEN PREPARED USING STANDARD
ENGINEERING SCALES. REDUCED SIZED PLANS WILL NOT
CONFORM TO STANDARD SCALES. IN MAKING MEASUREMENTS
ON REDUCED PLANS, THE ABOVE SCALES MAY BE USED.

J.U.L.I.E.
JOINT UTILITY LOCATION INFORMATION FOR EXCAVATION
1-800-892-0123
OR 811

**PROJECT ENGINEER – BSK
PROJECT MANAGER – BKC**

CONTRACT NO. 87624

**FUNCTIONAL CLASSIFICATION
LOCAL ROAD (NON-URBAN)
DESIGN SPEED 30 MPH
2016 ADT = 30
3R GUIDELINES**

GROSS LENGTH = 250 FT = 0.047 MILE
NET LENGTH = 250 FT = 0.047 MILE



Bradley A. Kleinmann
DATE: 10/19/2015
EXPIRES 11/30/15

LASALLE COUNTY HIGHWAY DEPARTMENT	
APPROVED	11-6 <i>Edward F. Hottel</i> GRAND RAPIDS TOWNSHIP ROAD COMMISSIONER
APPROVED	11-6 <i>James J. Keenan</i> LASALLE COUNTY ENGINEER
PASSED	11-6 <i>David R. ...</i> DISTRICT 3 LOCAL ROADS & STREETS ENGINEER
RELEASING FOR BID BASED ON LIMITED REVIEW	11-6 <i>Paul A. ...</i> DEPUTY DIRECTOR OF HIGHWAYS, REGION 2 ENGINEER

**PRINTED BY THE AUTHORITY
OF THE STATE OF ILLINOIS**

**WILLETT HOFMANN
& ASSOCIATES INC**
ENGINEERING ARCHITECTURE LAND SURVEYING
809 EAST 2ND STREET, DIXON, IL 61021-0367
T. 815-284-3381 DESIGN FIRM: #184-00918

SUMMARY OF QUANTITIES

CONSTRUCTION TYPE CODE: 0011

PAY CODE	QUANTITY	UNIT	ITEM
25100630	827	SQ YD	EROSION CONTROL BLANKET
28000250	17	POUND	TEMPORARY EROSION CONTROL SEEDING
28000305	40	FOOT	TEMPORARY DITCH CHECKS
28000400	111	FOOT	PERIMETER EROSION BARRIER
28000500	3	EACH	INLET AND PIPE PROTECTION
*40200800	411	TON	AGGREGATE SURFACE COURSE, TYPE B
50100100	1	EACH	REMOVAL OF EXISTING STRUCTURES
50105220	82	FOOT	PIPE CULVERT REMOVAL
50300260	104	SQ YD	BRIDGE DECK GROOVING
50300300	126	SQ YD	PROTECTIVE COAT
50500405	1,073	POUND	FURNISHING AND ERECTING STRUCTURAL STEEL
50500505	64	EACH	STUD SHEAR CONNECTORS
50800205	23,510	POUND	REINFORCEMENT BARS, EPOXY COATED
51500100	1	EACH	NAME PLATES
54003000	124.8	CU YD	CONCRETE BOX CULVERTS
*54200220	120	FOOT	PIPE CULVERTS, CLASS D, TYPE 1 15"
67100100	1	L SUM	MOBILIZATION
Z0013798	1	L SUM	CONSTRUCTION LAYOUT
*X2020410	511	CU YD	EARTH EXCAVATION (SPECIAL)
*X2090210	89	CU YD	POROUS GRANULAR BACKFILL, SPECIAL
*X2501000	0.17	ACRE	SEEDING, CLASS 2 (SPECIAL)
*X7010216	1	L SUM	TRAFFIC CONTROL AND PROTECTION, (SPECIAL)

*SEE BLR 11310 IN THE CONTRACT DOCUMENTS FOR SPECIAL PROVISIONS.

FILE - S:\PROJECTS\2014\1285014\CONSTRUCTION\STRUCT\20-D-148014\1285014_Summary of Quantities.dwg



DESIGNED - BRAD KLEINMAIER	REVISED -
CHECKED - MEGAN CACKLEY	REVISED -
DRAWN - RON ALLEN	REVISED -
CHECKED - BRAD KLEINMAIER	REVISED -

LASALLE COUNTY
TR 322 (E 19TH ROAD) OVER COVEL CREEK
STATION 20 + 00

SUMMARY OF QUANTITIES
STRUCTURE NO. 050-3620

TWP	SECTION	COUNTY	TOTAL SHEETS	SHEET NO.
322	15-14759-00-BR	LASALLE	11	2
WHA* 1285014		CONTRACT NO. 87624		
(ILLINOIS FED. AID PROJECT BROS-0991055)				

GENERAL NOTES:

EXISTING STRUCTURES (INCLUDING FOUNDATIONS, WALLS, CISTERNS, WELLS, OR OTHER UNDERGROUND STRUCTURES) WITHIN THE RIGHT OF WAY SHALL BE REMOVED IN ACCORDANCE WITH ARTICLE 501.04 AND 501.05 OF THE STANDARD SPECIFICATIONS, WITHOUT ADDITIONAL COMPENSATION, UNLESS OTHERWISE NOTED IN THE PLANS OR SPECIAL PROVISIONS.

NO OVERHAUL HAS BEEN COMPUTED AND NONE SHALL BE PAID FOR FROM ANY SOURCE.

THE CONTRACTOR SHALL SEED ALL DISTURBED AREAS WITHIN THE PROJECT LIMITS.

THE FINAL TOP FOUR INCHES OF SOIL IN ANY RIGHT-OF-WAY AREA DISTURBED BY THE CONTRACTOR MUST BE A COHESIVE SOIL CAPABLE OF SUPPORTING VEGETATION AND APPROVED BY THE ENGINEER.

ALL UTILITY POLES, GAS PIPES, ETC. IN THE WAY OF THE IMPROVEMENTS SHALL BE MOVED BY THE UTILITIES PRIOR TO CONSTRUCTION AND SHALL NOT BE INCLUDED IN THE CONTRACT. THE CONTRACTOR SHALL NOTIFY THE RESPECTIVE UTILITIES TO MAKE THE NECESSARY ADJUSTMENTS PRIOR TO CONSTRUCTION.

THE LOCATION AND ELEVATION OF THE VARIOUS UNDERGROUND UTILITIES AS SHOWN ON THE PLANS ARE NOT TO BE TAKEN AS EXACT. THE CONTRACTOR SHALL USE SPECIAL CARE WHEN CONDUCTING CONSTRUCTION OPERATIONS NEAR THEM TO PREVENT DAMAGE.

THE LOCATION OF EXISTING FIELD TILES AND ANY OTHER PUBLIC OR PRIVATE UTILITIES AS SHOWN IN THE PLANS ARE NOT TO BE TAKEN AS EXACT. EXACT LOCATION OF ALL FIELD TILES AND UTILITIES IS TO BE DETERMINED IN THE FIELD BY THE CONTRACTOR.

THE CONTRACTOR SHALL BE RESPONSIBLE FOR PROTECTING UTILITY PROPERTY DURING CONSTRUCTION OPERATIONS AS OUTLINED IN ARTICLE 107.31 OF THE STANDARD SPECIFICATIONS. ANY UTILITY PROPERTY DAMAGED DURING CONSTRUCTION SHALL BE REPAIRED OR REPLACED TO THE SATISFACTION OF THE OWNER AT THE CONTRACTOR'S EXPENSE.

THE UTILITIES LOCATED WITHIN THE PROJECT LIMITS OR IMMEDIATELY ADJACENT TO THE PROJECT CONSTRUCTION LIMITS INCLUDE:

COMED ATTN: TIM COSLET 1910 S BRIGGS ST JOLIET, IL 60433 PH: (815) 724-5010	FRONTIER COMMUNICATIONS ATTN: KALIN HINSHAW 112 ELM ST SYCAMORE, IL 60178 PH: (815) 895-1515 kalin.hinshaw@ftr.com	MTCO COMMUNICATIONS ATTN: JIM SPRINGER 220 NORTH MENARD ST METAMORA, IL 61548 PH: (309) 367-4197 jspringer@corp.mtco.com	NICOR GAS ATTN: BRUCE KOPPANG 1844 FERRY ROAD NAPERVILLE, IL 60563 PH: (630) 388-3046 bkoppang@agresources.com
---	---	---	---

A NATIONWIDE 404 PERMIT HAS BEEN ISSUED FOR THIS PROJECT AND THE CONDITIONS OF THAT PERMIT MUST BE ADHERED TO.

WHERE SECTION OR SUBSECTION MONUMENTS ARE ENCOUNTERED, THE ENGINEER SHALL BE NOTIFIED BEFORE SUCH MONUMENTS ARE REMOVED. THE CONTRACTOR SHALL PROTECT AND CAREFULLY PRESERVE ALL PROPERTY MARKERS, MONUMENTS, AND RIGHT OF WAY PINS UNTIL THE OWNER, AN AUTHORIZED SURVEYOR, OR AGENT HAS WITNESSED OR OTHERWISE REFERENCED THEIR LOCATION.

EXISTING TRAFFIC SIGNS THAT ARE WITHIN THE CONSTRUCTION LIMITS SHALL BE REMOVED BY THE CONTRACTOR. COST OF REMOVAL TO BE INCLUDED IN THE CONTRACT UNIT PRICE BID PER CUBIC YARD FOR EARTH EXCAVATION (SPECIAL).

WHERE THE PROPOSED CONSTRUCTION MEETS AN EXISTING BITUMINOUS SURFACE, OR WHERE SAWING IS STATED ON THE PLANS, THE EXISTING SHALL BE SAWED IN A NEAT, STRAIGHT LINE. COST OF SAWING TO BE INCLUDED IN THE CONTRACT UNIT PRICE BID PER CUBIC YARD FOR EARTH EXCAVATION (SPECIAL).

ALL BORROW/WASTE/USE SITES MUST BE APPROVED BY THE DEPARTMENT PRIOR TO REMOVING ANY MATERIAL FROM THE PROJECT OR INITIATING ANY EARTHMOVING ACTIVITIES, INCLUDING TEMPORARY STOCKPILING OUTSIDE THE LIMITS OF CONSTRUCTION.

SCHEDULE OF QUANTITIES

EROSION CONTROL BLANKET		
STATION	SQ. YD.	REMARKS
LT STA 19+00 - 21+50	369	
RT STA 19+00 - 21+50	458	
PROJECT TOTAL	827	
25100630		

TEMPORARY EROSION CONTROL SEEDING		
STATION	POUND	REMARKS
LT STA 19+00 - 21+50	8	100 LBS/ACRE
RT STA 19+00 - 21+50	9	100 LBS/ACRE
PROJECT TOTAL	17	
28000250		

TEMPORARY DITCH CHECKS		
STATION	FOOT	REMARKS
LT STA 19+70	10	
LT STA 20+30	10	
RT STA 19+70	10	
RT STA 20+30	10	
PROJECT TOTAL	40	
28000305		

PERIMETER EROSION BARRIER		
STATION	FOOT	REMARKS
LT STA 19+70 - 19+85	27	
LT STA 20+15 - 20+30	27	
RT STA 19+70 - 19+85	29	
RT STA 20+15 - 20+30	28	
PROJECT TOTAL	111	
28000400		

INLET AND PIPE PROTECTION		
STATION	EACH	REMARKS
FEL STA 19+30	1	
FEL STA 20+70	1	
FER STA 19+30	1	
PROJECT TOTAL	3	
28000500		

SCHEDULE OF QUANTITIES - CONT.

AGGREGATE SURFACE COURSE, TYPE B		
STATION	TON	REMARKS
STA 19+00 - 19+84	119	12"
STA 20+16 - 21+50	202	12"
FEL STA 19+30	30	8"
FEL STA 20+70	29	8"
FER STA 19+30	31	8"
PROJECT TOTAL	411	
*40200800		

PIPE CULVERT REMOVAL		
STATION	FOOT	REMARKS
FEL STA 19+30	28	15"
FEL STA 20+70	27	15"
FER STA 19+30	27	15"
PROJECT TOTAL	82	
50105220		

PIPE CULVERTS, CLASS D, TYPE 1 15"		
STATION	FOOT	REMARKS
FEL STA 19+30	40	
FEL STA 20+70	40	
FER STA 19+30	40	
PROJECT TOTAL	120	
54200220		

SEEDING, CLASS 2 (SPECIAL)		
STATION	ACRE	REMARKS
LT STA 19+00 - 21+50	0.08	
RT STA 19+00 - 21+50	0.09	
PROJECT TOTAL	0.17	
*X2501000		

TR 322 (E 19TH ROAD) EARTHWORK TOTALS				
LOCATION	EARTH EXCAVATION (SPECIAL)	EARTH EXCAVATION ADJUSTED FOR SHRINKAGE 25%	EMBANKMENT	FURNISHED EXCAVATION
	CU YD	CU YD	CU YD	CU YD
STA 19+00 - 21+50	511	383	31	0
PROJECT TOTAL	511	383	31	0
*X2020410				



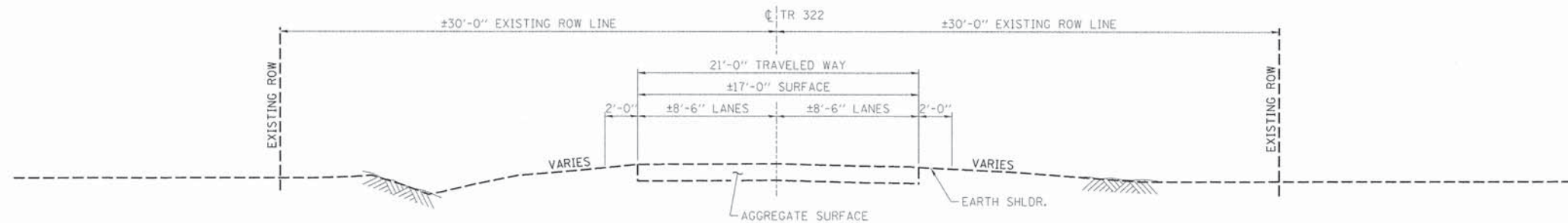
DESIGNED - BRAD KLEINMAIER	REVISED -
CHECKED - MEGAN CACKLEY	REVISED -
DRAWN - RON ALLEN	REVISED -
CHECKED - BRAD KLEINMAIER	REVISED -

LASALLE COUNTY
TR 322 (E 19TH ROAD) OVER COVEL CREEK
STATION 20+00

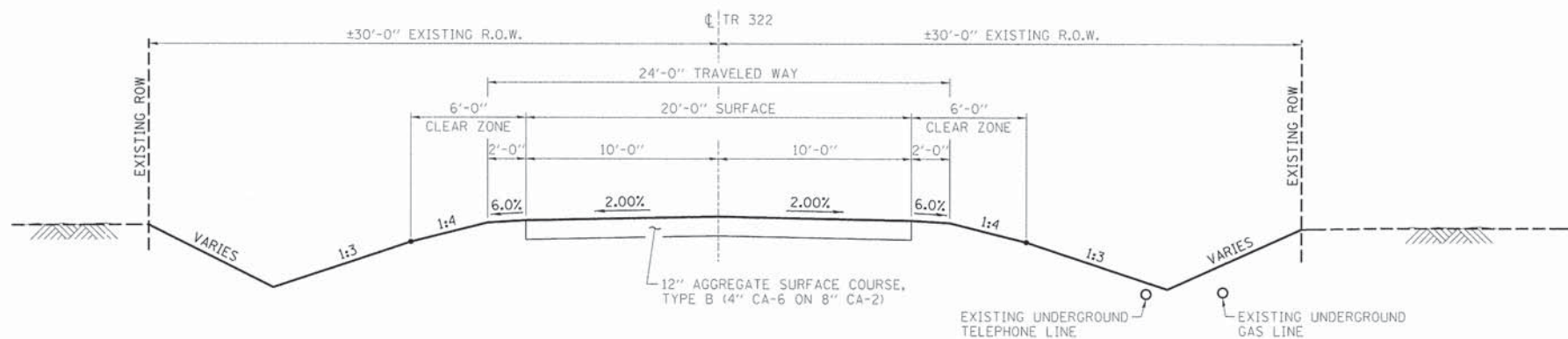
GENERAL NOTES & SCHEDULE OF QUANTITIES
STRUCTURE NO. 050-3620

TWP	SECTION	COUNTY	TOTAL SHEETS	SHEET NO.
322	15-14759-00-BR	LASALLE	11	3
WHA# 1285D14		CONTRACT NO. 87624		
ILLINOIS FED. AID PROJECT BROS-0910551				

FILE = S:\PROJECTS\2014\1285D14\CONVEYANCE\STRUCT\322.Dwg Date: 12/8/14 General Notes Schedule of Quantities & Details

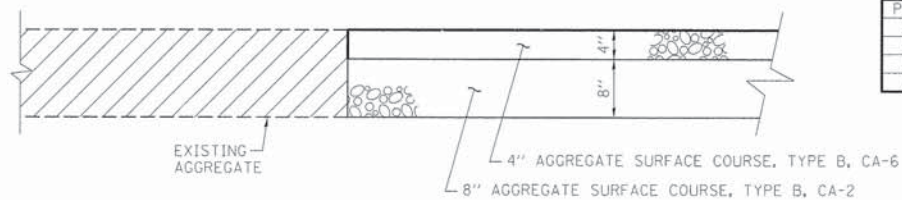


EXISTING ROADWAY TYPICAL SECTION



PROPOSED ROADWAY TYPICAL SECTION

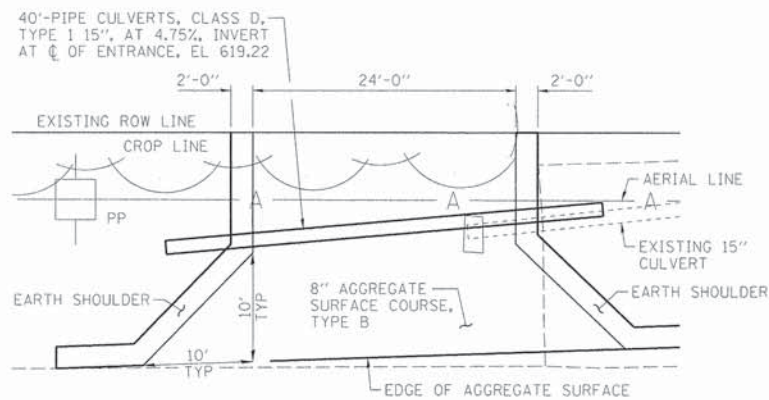
STA. 19+57 TO STA. 21+27



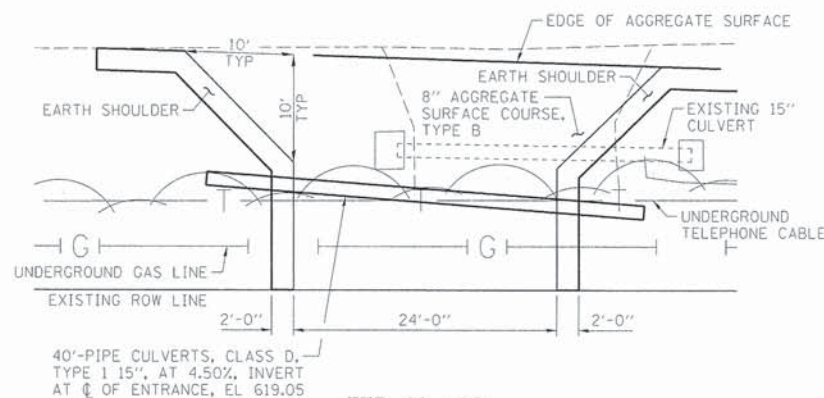
TYPICAL CORE JOINT DETAIL

STATION 19+00 & 21+50

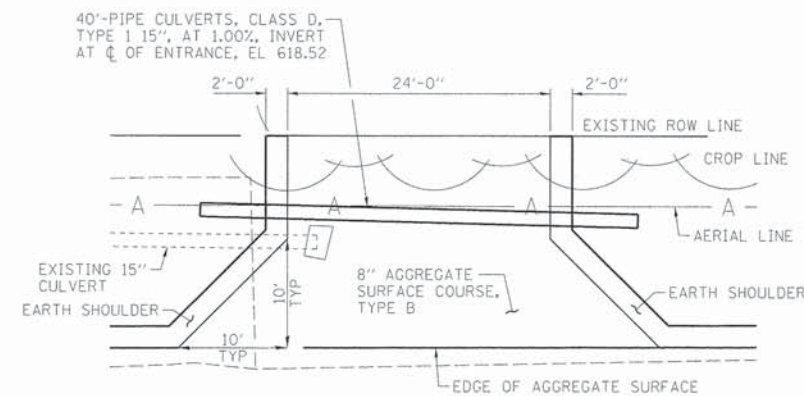
TR 322 - HORIZONTAL CONTROL POINTS						
PT. #	LOCATION	N	E	EL.	DESCRIPTION	
100	23.5' LT OF STA 24+28.7	1665000.79	856072.17	623.04	3/4" IP	
101	15.1' RT OF STA 13+93.3	1663965.38	856111.20	624.24	3/4" IP	
102	8.0' LT OF STA 20+26.6	1664598.62	856086.58	622.55	3/4" IP	
103	11.2' RT OF STA 19+64.4	1664536.45	856105.92	622.44	3/4" IP	



FEL 19+30



FER 19+30



FEL 20+70



DESIGNED - BRAD KLEINMAIER
 CHECKED - MEGAN CACKLEY
 DRAWN - RON ALLEN
 CHECKED - BRAD KLEINMAIER

REVISED -
 REVISED -
 REVISED -
 REVISED -

LASALLE COUNTY
TR 322 (E 19TH ROAD) OVER COVEL CREEK
STATION 20+00

TYPICAL SECTIONS & DETAILS
STRUCTURE NO. 050-3620

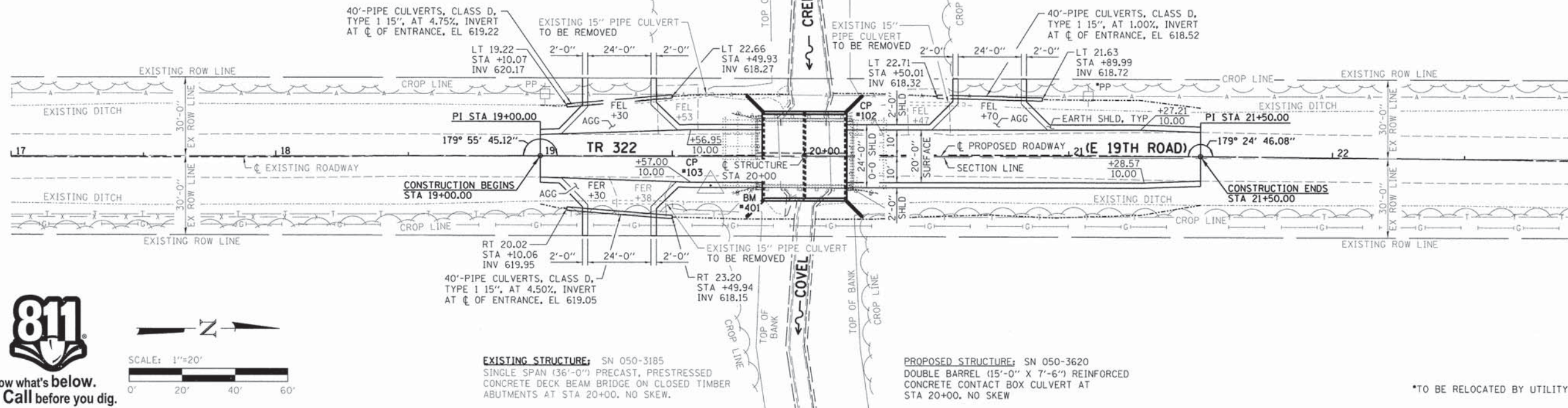
TWP	SECTION	COUNTY	TOTAL SHEETS	SHEET NO.
322	15-14759-00-BR	LASALLE	11	4
WHA# 1285D14			CONTRACT NO. 87624	
(ILLINOIS) FED. AID PROJECT BROS-09K055				

FILE = S:\PROJECTS\2014\1285D14\CH\DESIGN\STRUCT\20.Dwg.dwg 12/28/14 1:10:04 PM

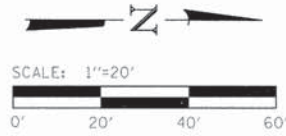
BENCH MARK #402: RR SPIKE IN 3RD PP SOUTH OF STRUCTURE
EL 625.06

BENCH MARK #401: CHSLD "O" ON SOUTHEAST CORNER
OF HUB GUARD OF SN 050-3185
EL 623.53

BENCH MARK #400: RR SPIKE IN 2ND PP NORTH OF STRUCTURE
EL 623.28



Know what's below.
Call before you dig.



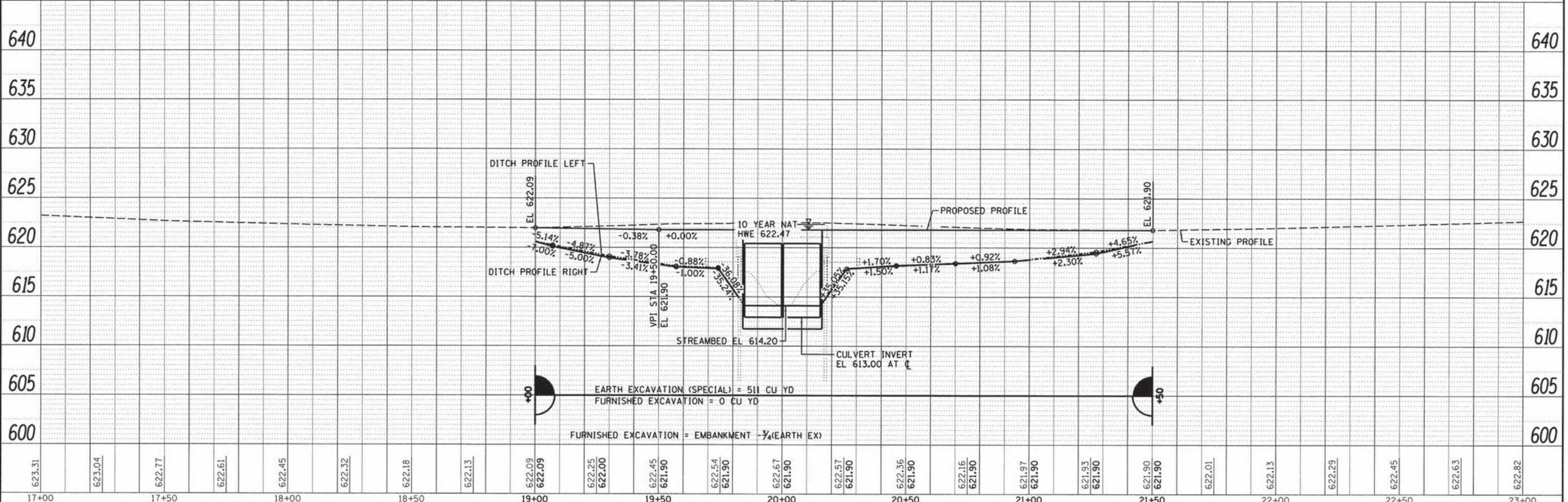
EXISTING STRUCTURE: SN 050-3185
SINGLE SPAN (36'-0") PRECAST, PRESTRESSED
CONCRETE DECK BEAM BRIDGE ON CLOSED TIMBER
ABUTMENTS AT STA 20+00. NO SKEW.

PROPOSED STRUCTURE: SN 050-3620
DOUBLE BARREL (15'-0" X 7'-6") REINFORCED
CONCRETE CONTACT BOX CULVERT AT
STA 20+00. NO SKEW

*TO BE RELOCATED BY UTILITY COMPANY

DATE	BY

DATE	BY



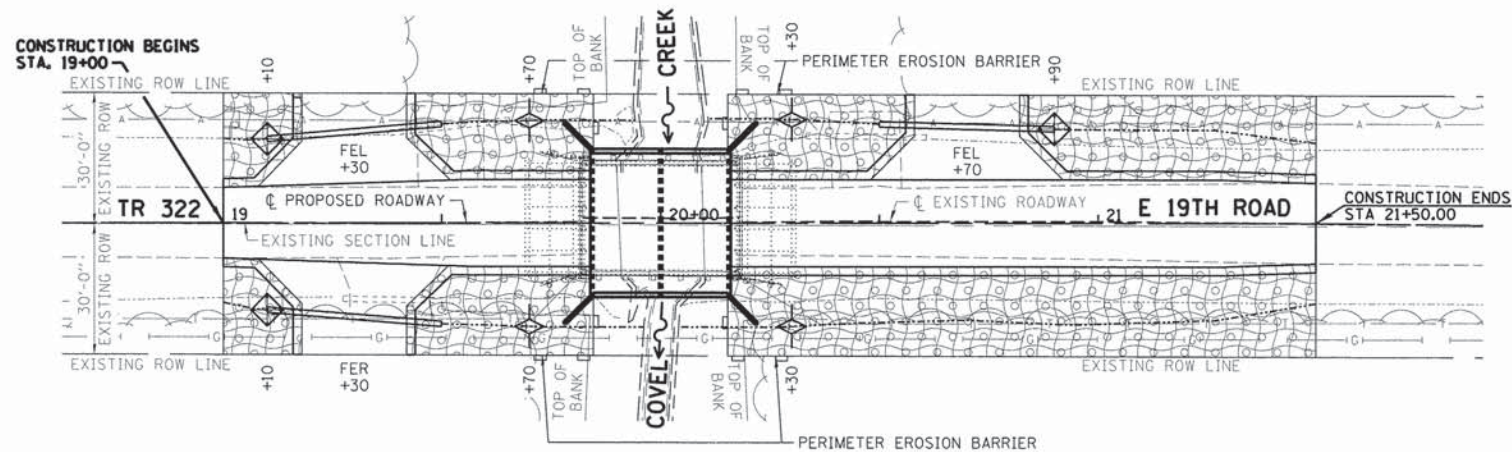
DESIGNED - MEGAN CACKLEY	REVISED -
CHECKED - MICHAEL WAGNER	REVISED -
DRAWN - RON ALLEN	REVISED -
CHECKED - BRIAN CONVERSE	REVISED -

LASALLE COUNTY
TR 322 (E 19TH ROAD) OVER COVEL CREEK
STATION 20+00

PLAN & PROFILE
STRUCTURE NO. 050-3620

SCALE: 1" = 20'-0" SHEET NO. 1 OF 1 SHEET STA. 17+00.00 TO STA. 23+00.00

TR	SECTION	COUNTY	TOTAL SHEETS NO.	SHEET NO.
322	15-14759-00-BR	LASALLE	11	5
WHA# 1285014		CONTRACT NO. 87624		
ILLINOIS FED. AID PROJECT BROS-00991055				

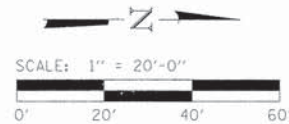


LEGEND

	PERIMETER EROSION BARRIER
	SEEDING, CLASS 2 (SPECIAL)
	TEMPORARY DITCH CHECKS
	EROSION CONTROL BLANKET
	INLET AND PIPE PROTECTION



Know what's below.
Call before you dig.



EROSION CONTROL NOTES

THE SOIL EROSION AND SEDIMENT CONTROL PRACTICES WILL BE INSPECTED WEEKLY AND AFTER 1/2" OF RAIN OR MORE BY THE INDIVIDUAL ON SITE IN CHARGE OF SOIL EROSION AND SEDIMENT CONTROL DURING THE CONSTRUCTION OF THE PROJECT.

PERIMETER EROSION BARRIER SHALL COMPLY WITH SECTION 280 OF THE STANDARD SPECIFICATIONS AND SHALL BE PLACED AS SHOWN ON THE EROSION CONTROL PLAN AND IN ACCORDANCE WITH STATIONS SHOWN ON THE SCHEDULE OF QUANTITIES SHEET OR AS DIRECTED BY THE ENGINEER.

SILT FENCE SHALL BE INSTALLED FOLLOWING THE COMPLETION AND STABILIZATION OF ALL AREAS ADJACENT TO THE ON-SITE DRAINAGES. THE SILT FENCE WILL REMAIN IN PLACE UNTIL THE CONTRIBUTING AREA IS STABILIZED.

FOR SEEDING, CLASS 2 (SPECIAL) SEE SPECIAL PROVISIONS.

EROSION CONTROL BLANKET SHALL BE PLACED IN DITCHES AND TO ALL DISTURBED AREAS AS SHOWN ON THIS EROSION CONTROL PLAN SHEET AND IN ACCORDANCE WITH SECTION 251 OF THE STANDARD SPECIFICATIONS FOR ROAD AND BRIDGE CONSTRUCTION.

THE USE OF GREEN DYE IN THE EROSION CONTROL BLANKET IS NOT ACCEPTABLE.

TEMPORARY DITCH CHECKS SHALL COMPLY WITH SECTION 280 OF THE STANDARD SPECIFICATIONS FOR ROAD AND BRIDGE CONSTRUCTION AND STANDARD 280001-07.

TEMPORARY DITCH CHECKS SHALL BE PLACED AT STATIONS CALLED OUT IN THE SCHEDULE OF QUANTITIES OR AS DIRECTED BY THE ENGINEER.

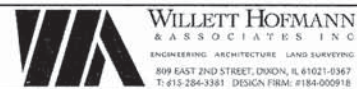
STOCKPILES OF SOIL AND OTHER BUILDING MATERIALS TO REMAIN IN PLACE MORE THAN THREE (3) DAYS SHALL BE FURNISHED WITH EROSION AND SEDIMENT CONTROL MEASURES (I.E. PERIMETER SILT FENCE). STOCKPILES TO REMAIN IN PLACE FOR 14 DAYS OR MORE SHALL RECEIVE TEMPORARY SEEDING.

ALL ADJACENT ENTRANCES MUST BE KEPT CLEAR OF DEBRIS. INSPECTED DAILY AND CLEANED WHEN NECESSARY.

BILL OF MATERIAL

ITEM	UNIT	QUANTITY
EROSION CONTROL BLANKET	SQ YD	827
TEMPORARY EROSION CONTROL SEEDING	POUND	17
TEMPORARY DITCH CHECKS	FOOT	40
PERIMETER EROSION BARRIER	FOOT	111
INLET AND PIPE PROTECTION	EACH	3
SEEDING, CLASS 2 (SPECIAL)	ACRE	0.17

FILE = S:\PROJECTS\2014\1285014\CONSTRUCTION\2014\Drawings\1285014_Erosion_Control.dwg

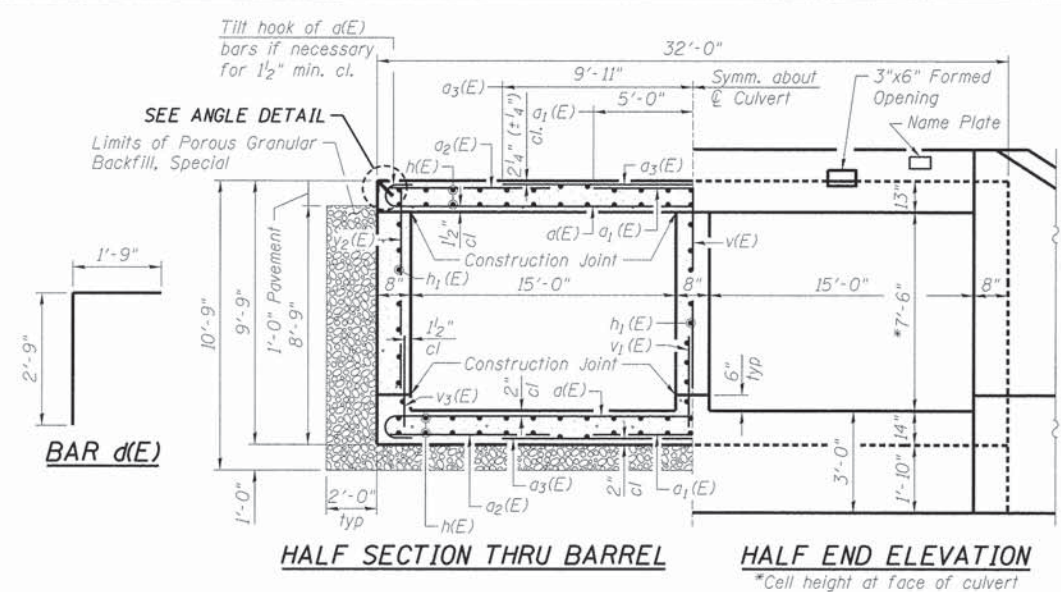
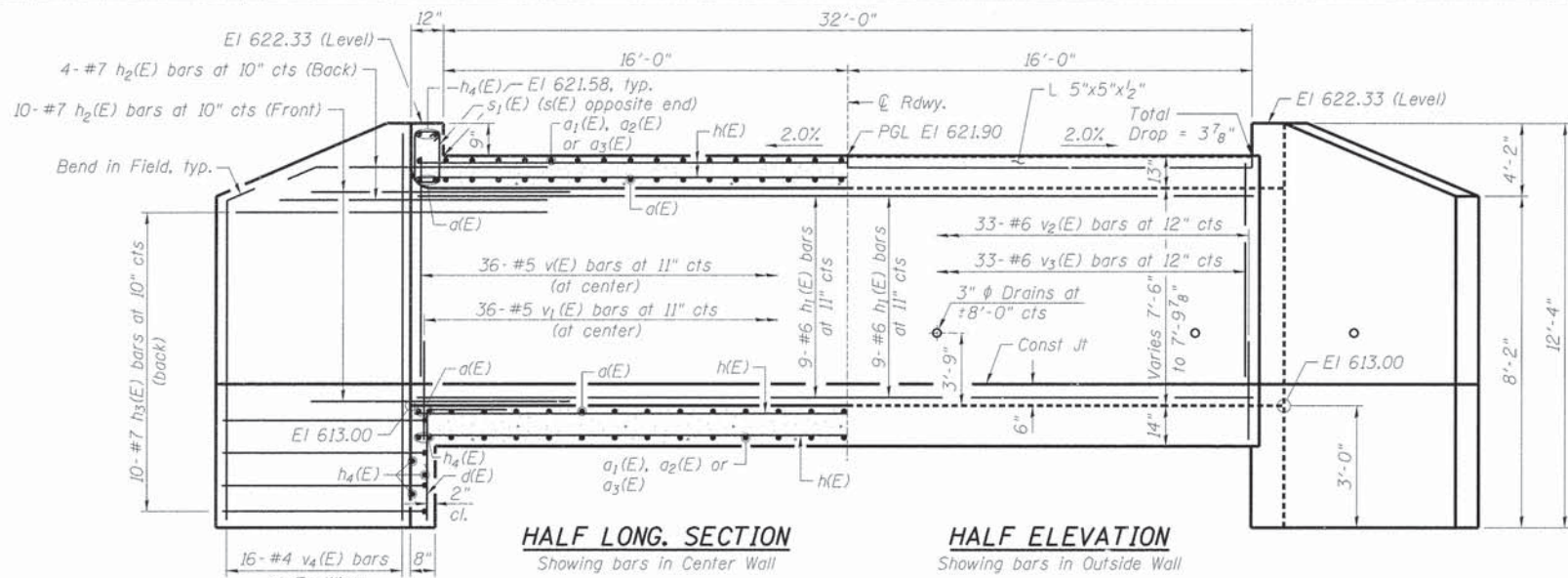


DESIGNED - BRAD KLEINMAIER	REVISED -
CHECKED - MEGAN CACKLEY	REVISED -
DRAWN - RON ALLEN	REVISED -
CHECKED - BRAD KLEINMAIER	REVISED -

LASALLE COUNTY
TR 322 (E 19TH ROAD) OVER COVELL CREEK
STATION 20+00

EROSION CONTROL PLAN
STRUCTURE NO. 050-3620
SCALE: 1" = 20'-0" SHEET NO. 1 OF 1 SHEET STA. 18+50.00 TO STA. 22+00.00

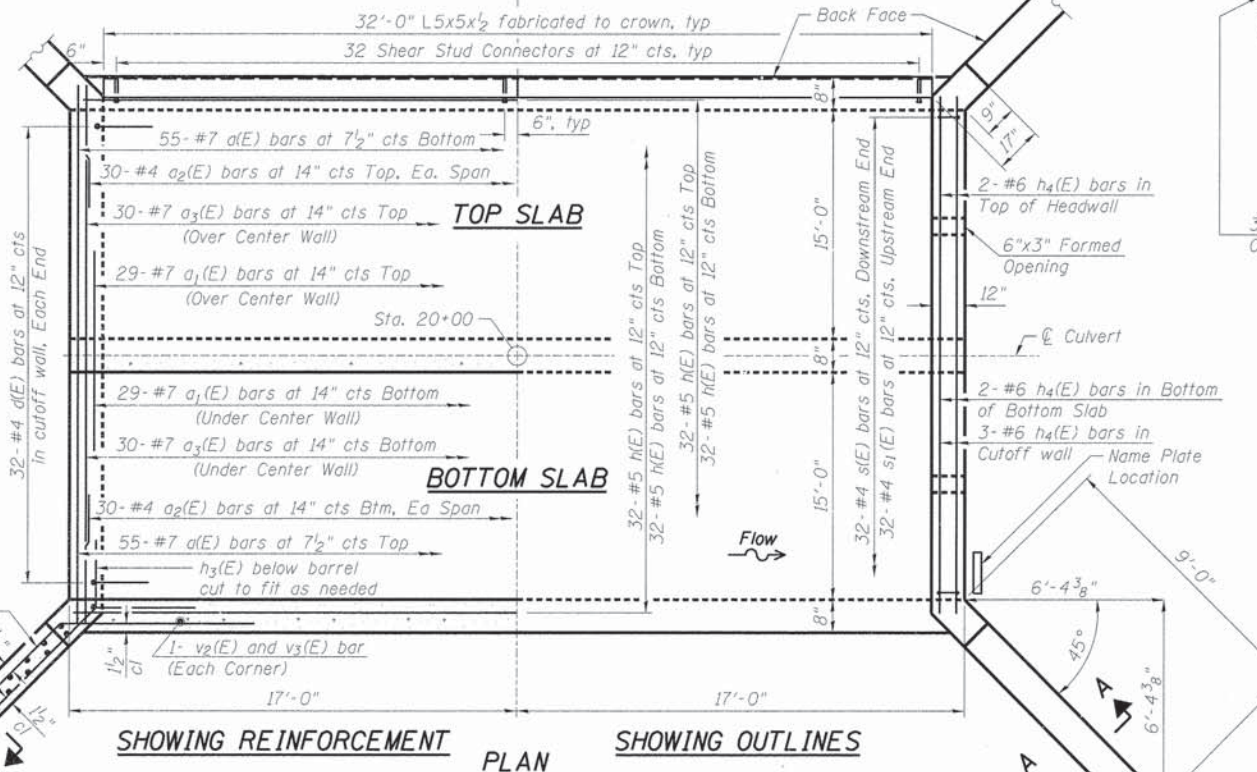
TWP	SECTION	COUNTY	TOTAL SHEETS	SHEET NO.
322	15-14759-00-BR	LASALLE	11	6
WHA# 1285014		CONTRACT NO. 87624		
ILLINOIS FED. AID PROJECT BR05-09K0551				



REINFORCEMENT
 NOTE:
 a₁(E) & a₃(E) bars alternate
 a₃(E) bars are lapped to a₂(E) bars

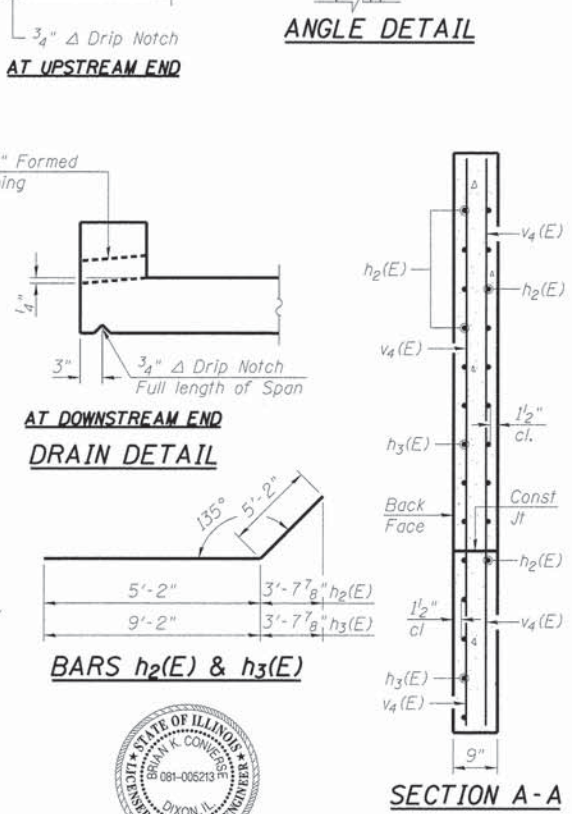


SIZE	LAP
#4	2'-7"
#5	3'-3"
#6	3'-10"
#7	5'-2"
#8	6'-9"



BILL OF MATERIAL

Bar	No.	Size	Length	Shape
a(E)	110	#7	33'-5"	U
a ₁ (E)	58	#7	10'-0"	U
a ₂ (E)	120	#4	8'-6"	—
a ₃ (E)	60	#7	19'-10"	—
d(E)	64	#4	4'-6"	L
h(E)	128	#5	33'-9"	—
h ₁ (E)	27	#6	33'-9"	—
h ₂ (E)	56	#7	10'-4"	—
h ₃ (E)	40	#7	14'-4"	—
h ₄ (E)	14	#6	31'-0"	—
s(E)	32	#4	5'-5"	□
s ₁ (E)	32	#4	5'-2"	□
v(E)	36	#5	7'-10"	—
v ₁ (E)	36	#5	4'-11"	—
v ₂ (E)	70	#6	7'-10"	—
v ₃ (E)	70	#6	5'-6"	—
v ₄ (E)	64	#4	12'-1"	—
Removal of Existing Structures			Each	1
Bridge Deck Grooving			Sq Yd	104
Protective Coat			Sq Yd	126
Furnishing and Erecting Structural Steel			Pound	1,073
Stud Shear Connectors			Each	64
Reinforcement Bars, Epoxy Coated			Pound	23,510
Name Plates			Each	1
Concrete Box Culverts			Cu Yd	124.8
Porous Granular Backfill, Special			Cu Yd	89



NAME PLATE LETTERING
 Refer to Std. 515001

COVEL CREEK
 BUILT 2016 BY
 LASALLE COUNTY
 SECTION 15-14759-00-BR
 TWP RTE 322 STATION 20+00
 SN 050-3620 LOADING HL-93

***WATERWAY INFORMATION**

Flood	Freq	Q	Opening	Sq Ft	Nat.	Head - Ft	Headwater El
	Yr	C.F.S.	Exist	Prop	H.W.E.	Exist	Prop
Overtopping	5	779	170	191	622.1	0.2	0.1
Design	10	1,055	170	191	622.5	0.2	0
Base	100	2,025	170	191	623.9	0	0
Scour Check	200	2,350	170	191	624.2	0	0
Max. Calc.	500	2,765	170	191	624.3	0	0

LOADING HL-93
 Allow for 50 #/sq. ft. future wearing surface

DESIGN STRESSES
 f_y = 60,000 p.s.i.
 f'_c = 3,500 p.s.i.

DESIGN SPECIFICATIONS
 Design in accordance with 2014 AASHTO LRFD Bridge Design Specifications, 7th Edition.

SECTION A-A

STATE OF ILLINOIS
 BRUCE K. CONYERS
 BRIDGE ENGINEER
 DIXON, ILL.
 081-005213
 BRIDGE ENGINEER

DATE: 10/22/2015
 EXPIRES 11/30/16

NOTES:
 *See Special Provisions
 Precast concrete box culvert option not allowed.
 All exposed edges shall be chamfered 3/4" unless otherwise noted.
 All steel angles shall be hot dipped galvanized in accordance with AASHTO M-232. Cost of galvanizing shall be included in the cost of Furnishing and Erecting Structural Steel.

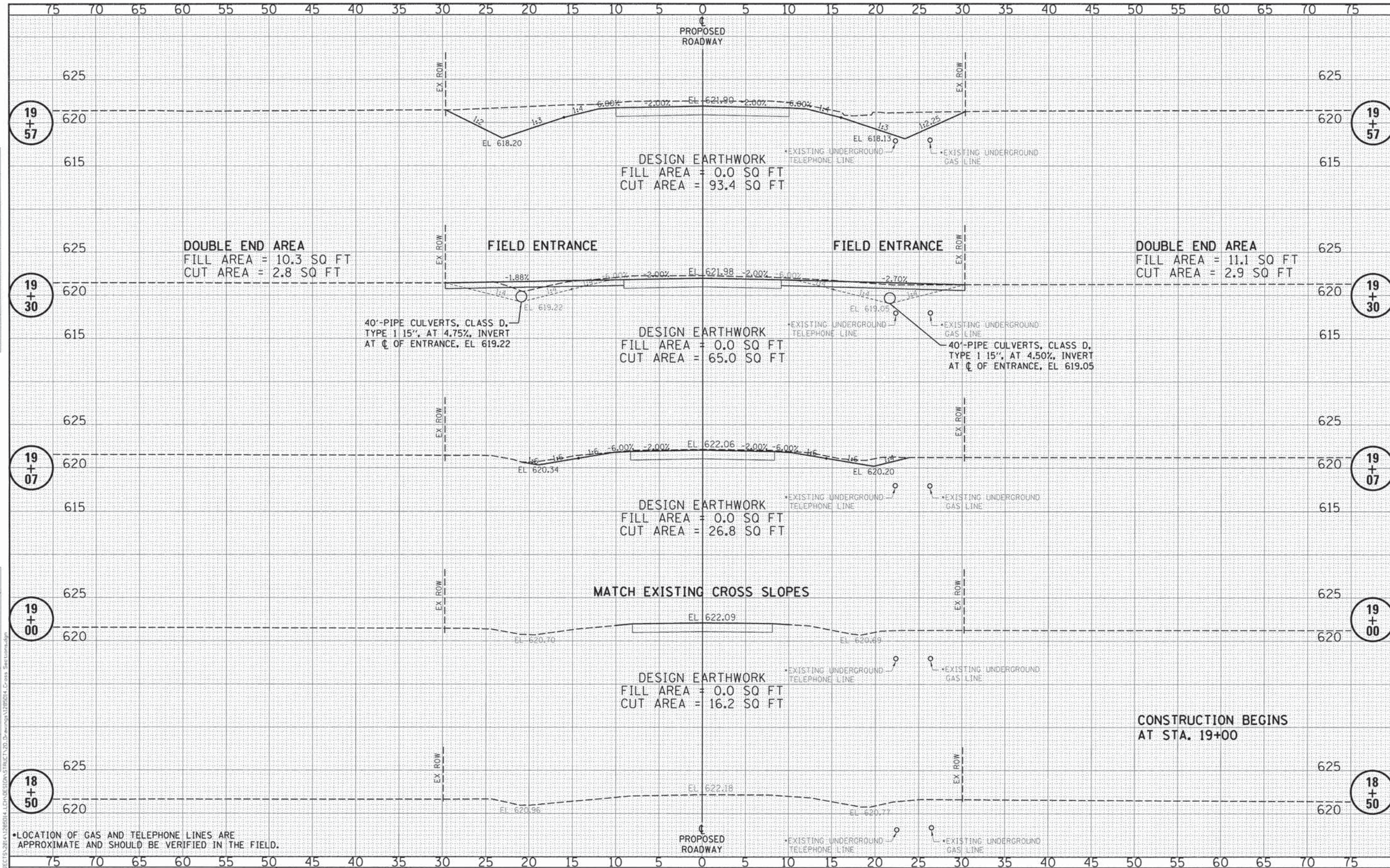
WILETT HOFMANN & ASSOCIATES INC.
 ENGINEERING ARCHITECTURE LAND SURVEYING
 809 EAST 2ND STREET, DIXON, IL 61021-0367
 T: 815-284-3381 DESIGN FIRM: F184-000918

DESIGNED - BRAD KLEINMAIER	REVISED -
CHECKED - MEGAN CACKLEY	REVISED -
DRAWN - RON ALLEN	REVISED -
CHECKED - BRAD KLEINMAIER	REVISED -

LASALLE COUNTY
TR 322 (E 19TH ROAD) OVER COVEL CREEK
STATION 20+00

DOUBLE BARREL BOX CULVERT DETAILS
STRUCTURE NO. 050-3620
 STRUCTURAL SHEET NO. 1 OF 2 SHEETS

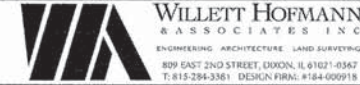
TWP	SECTION	COUNTY	TOTAL SHEETS
322	15-14759-00-BR	LASALLE	11 7
WHA* 1285014			CONTRACT NO. 87624
ILLINOIS FED. AID PROJECT BR05-0990551			



DATE	
BY	
FINAL SURVEY	
SUBMITTED	
NOTE BOOK	
NO.	
AREAS CHECKED	

DATE	
BY	
ORIGINAL SURVEY	
SUBMITTED	
NOTE BOOK	
NO.	
AREAS CHECKED	

• LOCATION OF GAS AND TELEPHONE LINES ARE APPROXIMATE AND SHOULD BE VERIFIED IN THE FIELD.

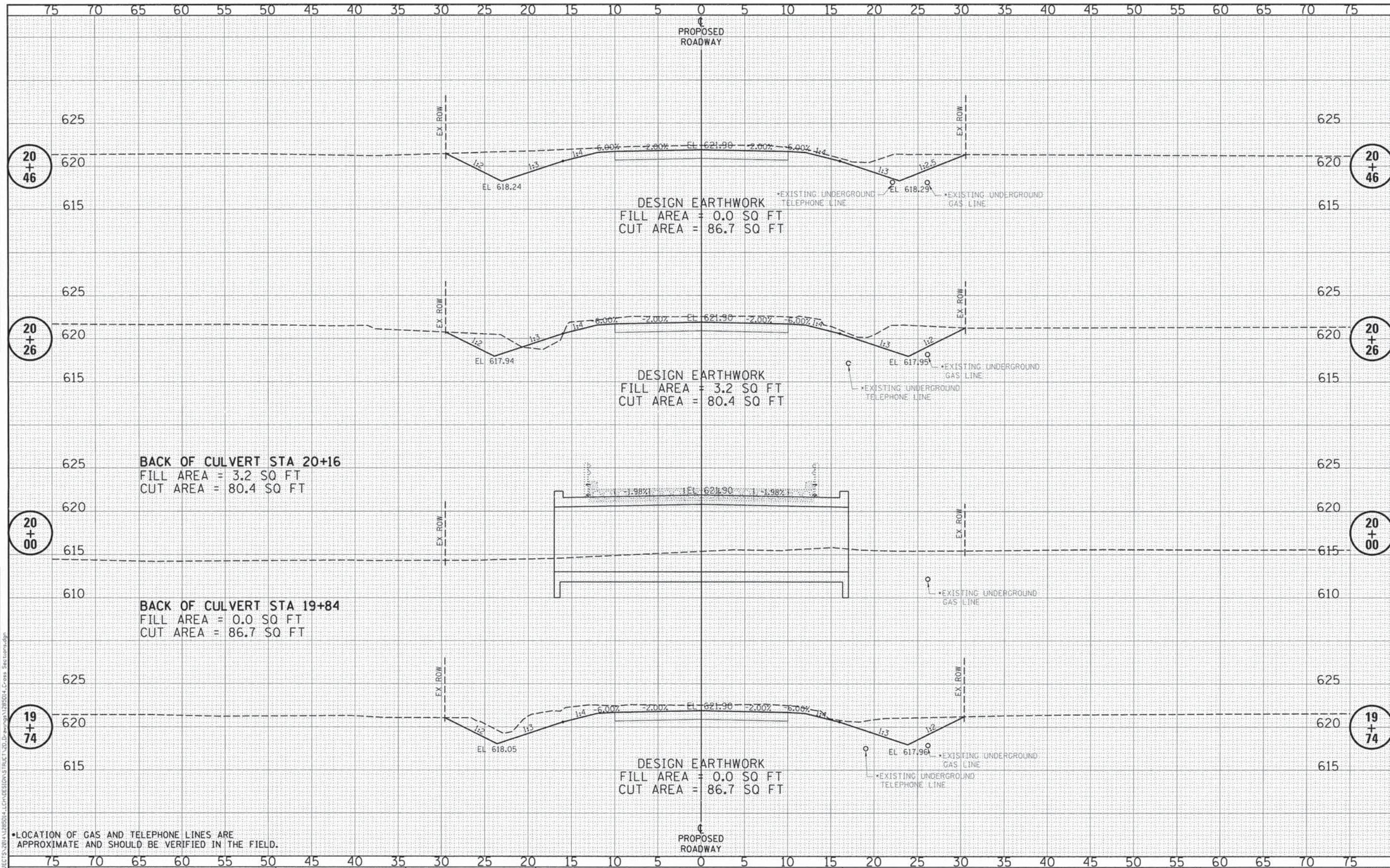


DESIGNED - BRAD KLEINMAIER	REVISED -
CHECKED - MEGAN CACKLEY	REVISED -
DRAWN - RON ALLEN	REVISED -
CHECKED - BRAD KLEINMAIER	REVISED -

LASALLE COUNTY
TR 322 (E 19TH ROAD) OVER COVEL CREEK
STATION 20+00

CROSS SECTIONS	
SCALE: 1"=5'-0"	SHEET NO. 1 OF 3 SHEETS
STA. 18+50.00 TO STA. 19+57.00	

TWP	SECTION	COUNTY	TOTAL SHEETS	SHEET NO.
322	15-14759-00-BR	LASALLE	11	9
WHA# 1285D14		CONTRACT NO. 87624		
ILLINOIS FED. AID PROJECT BROS-099055				



DATE	
BY	
DESIGNED	
CHECKED	
DRAWN	
NOTED	
REVISIONS	

DATE	
BY	
DESIGNED	
CHECKED	
DRAWN	
NOTED	
REVISIONS	

• LOCATION OF GAS AND TELEPHONE LINES ARE APPROXIMATE AND SHOULD BE VERIFIED IN THE FIELD.

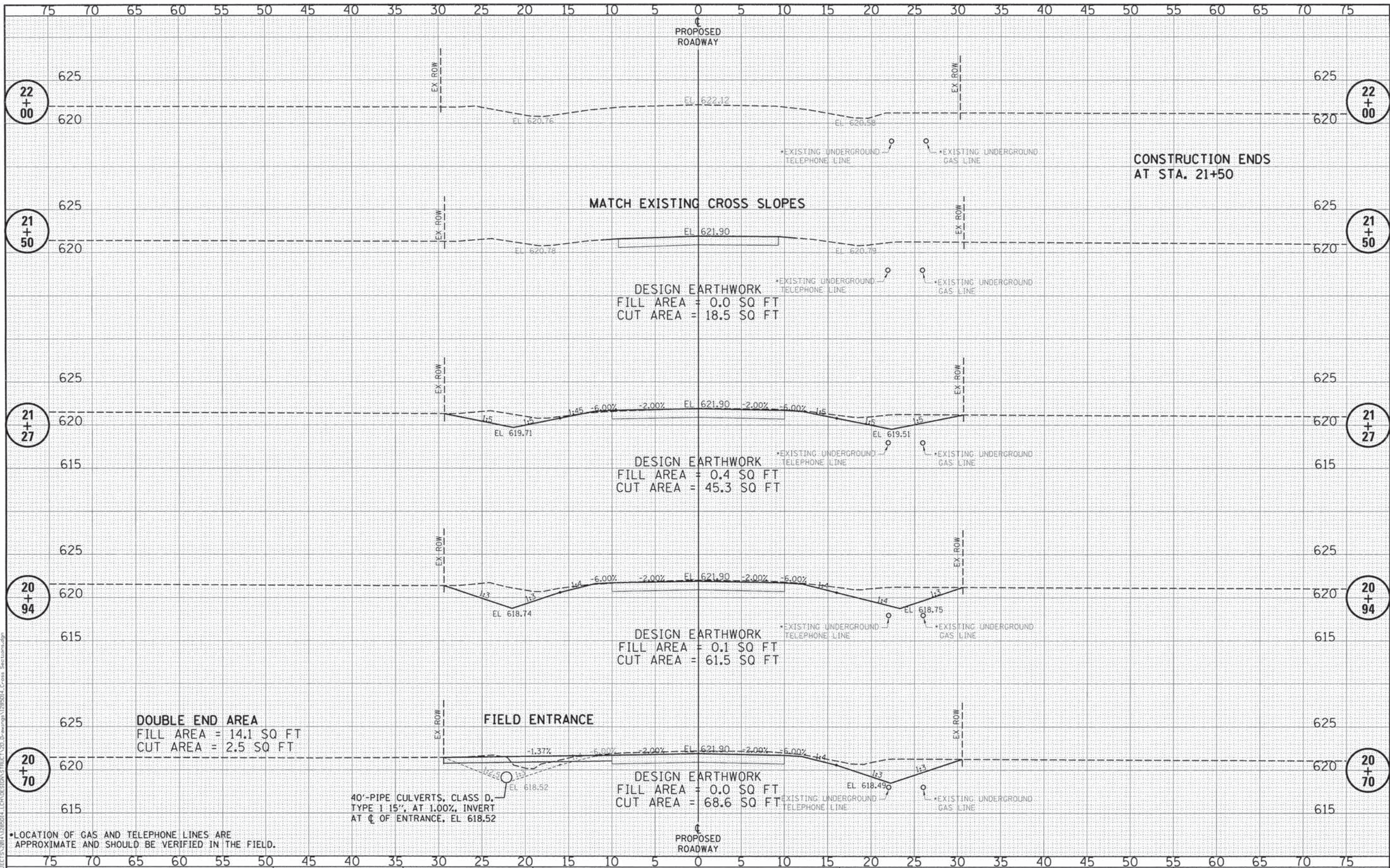


DESIGNED	- BRAD KLEINMAIER	REVISED	-
CHECKED	- MEGAN CACKLEY	REVISED	-
DRAWN	- RON ALLEN	REVISED	-
CHECKED	- BRAD KLEINMAIER	REVISED	-

LASALLE COUNTY
TR 322 (E 19TH ROAD) OVER COVEL CREEK
STATION 20+00

CROSS SECTIONS
STRUCTURE NO. 050-3620
 SCALE: 1"=5'-0" SHEET NO. 2 OF 3 SHEETS STA. 19+74.00 TO STA. 20+46.00

TWP	SECTION	COUNTY	TOTAL SHEETS	SHEET NO.
322	15-14759-00-BR	LASALLE	11	10
WHA* 1285014			CONTRACT NO. 87624	
ILLINOIS FED. AID PROJECT BR05-091055				



DATE	
BY	
FINAL SURVEY	SURVEYED
NOTE BOOK	PLOTTED
NO.	TEMPLATE
	AREAS CHECKED

DATE	
BY	
ORIGINAL SURVEY	SURVEYED
NOTE BOOK	PLOTTED
NO.	TEMPLATE
	AREAS CHECKED

•LOCATION OF GAS AND TELEPHONE LINES ARE APPROXIMATE AND SHOULD BE VERIFIED IN THE FIELD.



DESIGNED - BRAD KLEINMAIER	REVISED -
CHECKED - MEGAN CACKLEY	REVISED -
DRAWN - RON ALLEN	REVISED -
CHECKED - BRAD KLEINMAIER	REVISED -

LASALLE COUNTY
TR 322 (E 19TH ROAD) OVER COVEL CREEK
STATION 20+00

CROSS SECTIONS	
SCALE: 1"=5'-0"	SHEET NO. 3 OF 3 SHEETS
STA. 20+70.00 TO STA. 22+00.00	

TWP	SECTION	COUNTY	TOTAL SHEETS	SHEET NO.
322	15-14759-00-BR	LASALLE	11	11
WHA# 1285014		CONTRACT NO. 87624		
ILLINOIS FED. AID PROJECT BR05-099055				