

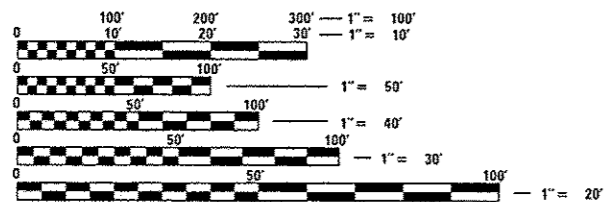
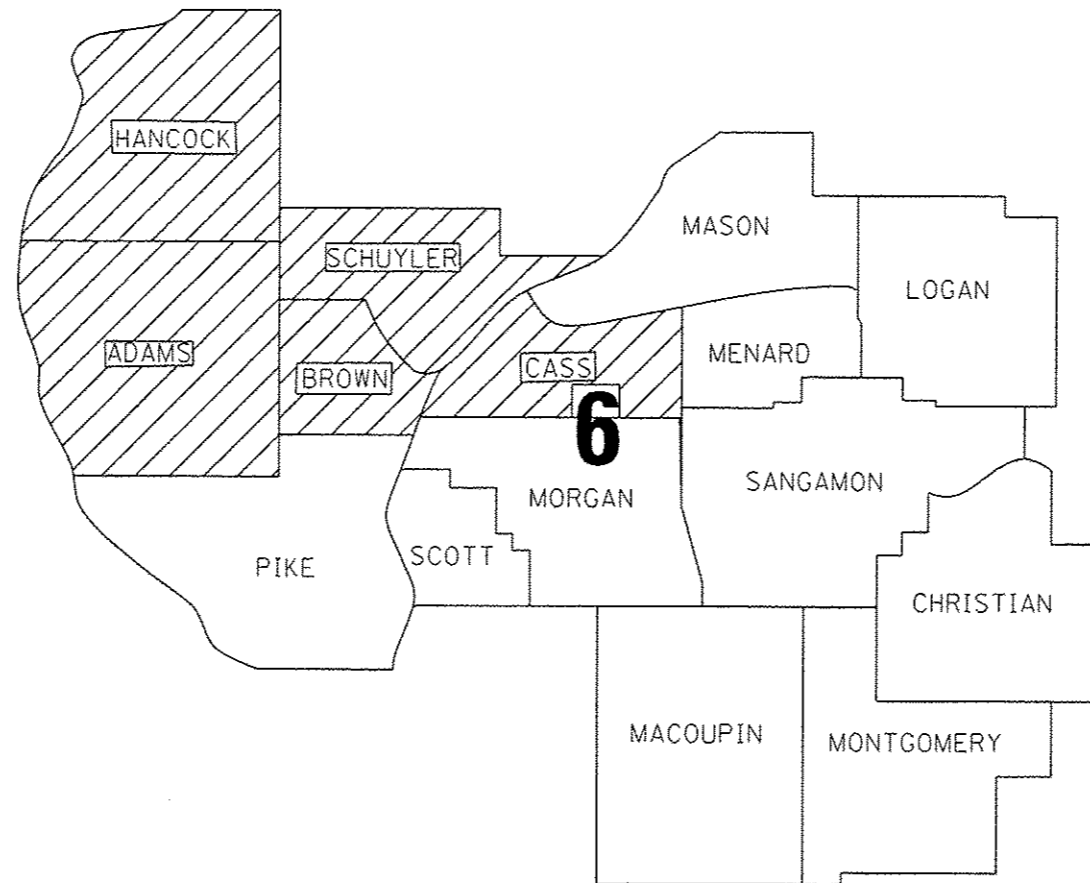
STATE OF ILLINOIS
 DEPARTMENT OF TRANSPORTATION
 DIVISION OF HIGHWAYS

**PROPOSED
 HIGHWAY PLANS**

FOR INDEX OF SHEETS, SEE SHEET NO. 2

VARIOUS ROUTES
 SECTION D6 BRDGE DK SEALING 2016-3
 VARIOUS COUNTIES
 BRIDGE DECK SEALING

C-96-011-16



FULL SIZE PLANS HAVE BEEN PREPARED USING STANDARD ENGINEERING SCALES. REDUCED SIZED PLANS WILL NOT CONFORM TO STANDARD SCALES. IN MAKING MEASUREMENTS ON REDUCED PLANS, THE ABOVE SCALES MAY BE USED.

J.U.L.I.E.
 JOINT UTILITY LOCATION INFORMATION FOR EXCAVATION
 1-800-892-0123
 OR 811

PROJECT ENGINEER: (217) 785-9046 JAY WAVERING
 TEAM ENGINEER: (217) 524-0472 VICTOR YOUNG

CONTRACT NO. 72104

F.A. #	SECTION	COUNTY	TOTAL SHEETS	SHEET NO.
*VAR	***	**	12	1
		ILLINOIS	CONTRACT NO. 72104	

*** D6 BRDGE DK SEALING 2016-3
 ** ADAMS, BROWN, CASS, HANCOCK & SCHUYLER

D-96-011-16



LOCATION OF SECTION INDICATED THUS: - [black rectangle] -

STATE OF ILLINOIS
 DEPARTMENT OF TRANSPORTATION
 DIVISION OF HIGHWAYS

SUBMITTED *December 3, 2015*

Roger J. Dickel, JPM
 DEPUTY DIRECTOR OF HIGHWAYS, REGION ENGINEER

Jan 29, 2016
Mawlem M. Addis, P.E.
 ENGINEER OF DESIGN AND ENVIRONMENT

Jan 29, 2016
Omer Osman, P.E.
 DIRECTOR OF HIGHWAYS, CHIEF ENGINEER

PRINTED BY THE AUTHORITY
 OF THE STATE OF ILLINOIS

INDEX OF SHEETS

- 1. COVER SHEET
- 2. INDEX, GENERAL NOTES, STANDARDS, & SIGNATURES
- 3. SUMMARY OF QUANTITIES
- 4.-5. SCHEDULE OF QUANTITIES
- 6.-11. BRIDGE LOCATION MAPS
- 12. BRIDGE DETAIL SHEET

HIGHWAY STANDARDS

- 000001-06
- 001006
- 701201-04
- 701400-08
- 701406-10
- 701411-09
- 701422-08
- 701501-06
- 701901-05

GENERAL NOTES

THE CONCRETE SEALER SHALL BE APPLIED TO THE ENTIRE TOP SURFACE OF THE DECK, INCLUDING THE INSIDE FACES AND TOPS OF THE PARAPETS.
 WATER BASED CONCRETE SEALERS WILL NOT BE ALLOWED.
 TO PREVENT THE DECK SURFACE TREATMENT FROM BEING APPLIED TO THE EXISTING PAVEMENT MARKINGS, THE EXISTING PAVEMENT MARKINGS SHALL BE TEMPORARILY COVERED PRIOR TO APPLICATION.
 THE TEMPORARY COVERING SHALL BE REMOVED AFTER APPLICATION OF THE DECK SURFACE TREATMENT AND PRIOR TO OPENING TO TRAFFIC. THE COST SHALL BE INCLUDED WITH BRIDGE DECK CONCRETE SEALER.

COMMITMENTS

COMMITMENTS ARE NOT TO BE ALTERED WITHOUT THE WRITTEN APPROVAL OF ALL PARTIES TO WHICH THE COMMITMENT WAS MADE.
 1. THE RESIDENT ENGINEER SHALL CONTACT STUDIES AND PLANS CONCERNING ANY MAJOR PLAN CHANGE, TO MAKE SURE NO PREVIOUS COMMITMENTS (NOT LISTED) WERE MADE AFFECTING THE DESIGN AND ALLOW AN IMPROVED DESIGN FOR FUTURE PROJECTS.

DISTRICT SIX	
EXAMINED	November 17 th 20 15
<i>John C. Wagoner</i>	
OPERATIONS ENGINEER	
EXAMINED	November 17 20 15
<i>Ron Duchambon</i>	
PROJECT IMPLEMENTATION ENGINEER	
EXAMINED	November 18 20 15
<i>Jeffrey P. Meyer</i>	
PROGRAM DEVELOPMENT ENGINEER	

•• ADAMS, BROWN, CASS, HANCOCK & SCHUYLER
 ••• D6 BRIDGE DECK SEALING 2016-3

FILE NAME *	USER NAME * perarova	DESIGNED -	REVISED -	STATE OF ILLINOIS DEPARTMENT OF TRANSPORTATION	INDEX OF SHEETS, GENERAL NOTES AND COMMITMENTS	F.A. RTE.	SECTION	COUNTY	TOTAL SHEETS	SHEET NO.
pw\11084EBID\TEC\illinois.gov\11001\Documents\11001\Offices\District 6\Projects\06721\DRAWING\data\640\sheet\06-72104-sht-genn		CHECKED -	REVISED -							
Default	PLOT SCALE * 48.0000' / in.	DATE -	REVISED -		SCALE:	SHEET	OF	SHEETS	STA.	TO STA.
	PLOT DATE * 12/1/2015									
										CONTRACT NO. 72104
										(ILLINOIS) FED. AID PROJECT

CODE NO.	ITEM	UNIT	TOTAL QUANTITY	CONSTRUCTION CODE				
				ADAMS 100% STATE BRIDGE	BROWN 100% STATE BRIDGE	CASS 100% STATE BRIDGE	HANCOCK 100% STATE BRIDGE	SCHUYLER 100% STATE BRIDGE
				0014	0014	0014	0014	0014
				6-00652-0300	6-00652-0300	6-00652-0300	6-00652-0300	6-00652-0300
67100100	MOBILIZATION	LSUM	1	0.2	0.2	0.2	0.2	0.2
70100320	TRAFFIC CONTROL AND PROTECTION, STANDARD 701422	LSUM	1	0.55			0.45	
70100420	TRAFFIC CONTROL AND PROTECTION, STANDARD 701411	EACH	4	4				
70100450	TRAFFIC CONTROL AND PROTECTION, STANDARD 701201	LSUM	1	0.2	0.2	0.2	0.2	0.2
70100700	TRAFFIC CONTROL AND PROTECTION, STANDARD 701406	LSUM	1	1				
70102620	TRAFFIC CONTROL AND PROTECTION, STANDARD 701501	LSUM	1	0.2	0.2	0.2	0.2	0.2
X7010410	SPEED DISPLAY TRAILER	CAL MO	2	2				
X5870015	BRIDGE DECK CONCRETE SEALER	SO FT	872389	382892	44948	136045	200235	108269

7

FILE NAME : USER NAME : Varenakisfa DESIGNED - REVISIONS: PLOT SCALE = 100.0000 / in. PLOT DATE = 12/9/2015				STATE OF ILLINOIS DEPARTMENT OF TRANSPORTATION				SUMMARY OF QUANTITIES SCALE: SHEET OF SHEETS STA. TO STA.				** ADAMS, BROWN, CASS, HANCOCK & SCHUYLER *** D6 BROGE DK SEALING 2016-3 CONTRACT NO. 72104 ILLINOIS FED. AID PROJECT			
USER NAME : Varenakisfa DESIGNED - REVISIONS: CHECKED - DATE -				STATE OF ILLINOIS DEPARTMENT OF TRANSPORTATION				SUMMARY OF QUANTITIES SCALE: SHEET OF SHEETS STA. TO STA.				** ADAMS, BROWN, CASS, HANCOCK & SCHUYLER *** D6 BROGE DK SEALING 2016-3 CONTRACT NO. 72104 ILLINOIS FED. AID PROJECT			
USER NAME : Varenakisfa DESIGNED - REVISIONS: CHECKED - DATE -				STATE OF ILLINOIS DEPARTMENT OF TRANSPORTATION				SUMMARY OF QUANTITIES SCALE: SHEET OF SHEETS STA. TO STA.				** ADAMS, BROWN, CASS, HANCOCK & SCHUYLER *** D6 BROGE DK SEALING 2016-3 CONTRACT NO. 72104 ILLINOIS FED. AID PROJECT			

SN	County	Facility Carried	Feature Crossed	Location	Deck Length (FT)	Deck Width (FT)	Parapet (FT)	Parapet (FT)	Area (SQ FT)
001-0002	Adams	IL 61/94	BIG NECK CREEK	.5M N IL 61/94 SPLIT	26	29	3.77	3.77	950
001-0003	Adams	IL 61	BIG NECK CREEK	.1M W IL 94	28	32.2	3.77	3.77	1113
001-0007	Adams	IL 96	URSA CREEK	IN URSA,.5M S IL 61	86	33	0.00	0.00	2838
001-0008	Adams	IL 96	ROCK CREEK	2M S IL 61 IN URSA	107.5	42.5	3.77	3.77	5379
001-0010	Adams	US 24	HOMAN CREEK	.05M N 12TH ST.	132.3	66	3.77	3.77	9729
001-0011	Adams	US 24 (3RD ST)	CEDAR CREEK & BN RR	1.5M N IL104/BROADWY	430.1	35.4	3.77	3.77	18468
001-0014	Adams	IL 57	GHOST HOLLOW CR	JUST N 12TH ST RD	42.9	33	3.77	3.77	1739
001-0016	Adams	IL 57	HARKNESS CREEK	AT BLUFF HALL	32	40.3	3.77	3.77	1530
001-0024	Adams	ILL 104 WB	MILL CREEK	2.2MI E I-172/IL 104	168	38.6	3.77	3.77	7752
001-0031	Adams	ILL 96	HOMAN CREEK	3.4MI N JCT ILL104/96	27.2	32.6	0.00	0.00	887
001-0044	Adams	ILL 96	FAI 172	I-72/IL96 INT	269.8	64	3.77	3.77	19301
001-0047	Adams	ILL 104	FAI 172	I-172/IL104 INT	269	92	3.77	3.77	26776
001-0050	Adams	FAI 172 SB	BN RR	1.5MI S I172/US24	288.3	38.5	3.77	3.77	13273
001-0051	Adams	FAI 172 NB	BN RR	1.5MI S I172/US24	288.3	38.5	3.77	3.77	13273
001-0052	Adams	IL 96	BEAR CREEK	1.4M N MARCELLINE	303	30.8	3.77	3.77	11617
001-0054	Adams	ILL 96	MILL CREEK	0.3MI SE I-172/IL96	208	42.7	3.77	3.77	10450
001-0055	Adams	FAI 172 NB	BURTON CREEK	1.4MI S I172/IL96	331.5	43.2	3.77	3.77	16820
001-0056	Adams	FAI 172 SB	BURTON CREEK	1.4MI S I172/IL96	331.5	43.2	3.77	3.77	16820
001-0062	Adams	FAI 172 SB	MILL CREEK	.8MI S I172/IL96	284.1	43.2	3.77	3.77	14415
001-0063	Adams	FAI 172 NB	MILL CREEK	.8MI S I172/IL96	287.9	43.2	3.77	3.77	14415
001-0064	Adams	FAI 172 SB	ILL 57	I-172/IL57 INT	209.5	45.4	3.77	3.77	11091
001-0065	Adams	FAI 172 NB	ILL 57	I-172/IL57 INT	209.5	53.1	3.77	3.77	12704
001-0070	Adams	ILL 104 EB	MILL CREEK	2.2MI E I-172/IL 104	175	40	3.77	3.77	8320
001-0072	Adams	ILL 94	S FORK BEAR CREEK	1.6 S GOLDEN	99.5	35.2	3.77	3.77	3502
001-0073	Adams	ILL 96	PIGEON CREEK	1.7MI SE PAYSON	190.5	32	3.77	3.77	7532
001-0074	Adams	IL 96	WHITE OAK CREEK	1.6M S CH 41 IN LIMA	78.5	32	3.77	3.77	3104
001-0075	Adams	IL 96	BRANCH BEAR CREEK	.4M S MARCELLINE	71	32	3.77	3.77	2807
001-0076	Adams	IL 96	JENKINS CREEK	1.3M N IL 61 IN URSA	105.3	32	3.77	3.77	4164
001-0077	Adams	IL 61	BIG NECK CREEK	1.1M W IL 94	100	35	3.77	3.77	4254
001-0078	Adams	IL 61	THURMAN CREEK	.2M E LORAIN RD	133.5	35	3.77	3.77	5679
001-0080	Adams	I-172 & ILL 336 SB	US 24	US 24 & IL 336 JCT	164	43.2	3.77	3.77	8321
001-0081	Adams	I-172 & ILL 336 NB	US 24	US 24 & IL 336 JCT	164	43.2	3.77	3.77	8321
001-0082	Adams	ILL 336 SB	ROCK CREEK	2MI N I172/24 INT	229	43.2	3.77	3.77	11619
001-0083	Adams	ILL 336 NB	ROCK CREEK	2MI N I172/24 INT	229	43.3	3.77	3.77	11642
001-0084	Adams	FAP 733	ILL 336	0.3 MI E MENDON	228.6	68.6	3.77	3.77	17406
001-0086	Adams	IL 336/61 (SB)	S FORK BEAR CREEK	.6M SE JCT IL 61 E	332.9	46.4	3.77	3.77	17957
001-0087	Adams	IL 336/61 (NB)	S FORK BEAR CREEK	.6M SE JCT IL 61 E	332.9	46.4	3.77	3.77	17957
001-0502	Adams	IL 96	BURTON CREEK	1.4MI SE I 172/IL96	266.2	34.8	3.77	3.77	11271
001-0503	Adams	ILL 96	CURTIS CREEK	2.1 MI S ILL 104/96	82	39.4	3.77	3.77	3849
001-0507	Adams	IL 104	GRINDSTONE CR	2 M W BEVERLY RD	90	35.2	3.77	3.77	3847
TOTAL =									382892

SN	County	Facility Carried	Feature Crossed	Location	Deck Length (FT)	Deck Width (FT)	Parapet (FT)	Parapet (FT)	Area (SQ FT)
005-0002	Brown	IL 107	MCKEE CREEK	7.2M S IL99-MT STRLG	565	30	3.77	3.77	21210
005-0003	Brown	IL 99	DRAINAGE DITCH	2.6M S 2ND-VERSAILES	22.3	41.8	0.00	0.00	932
005-0004	Brown	IL 99	DRAINAGE DITCH	4M S 2ND-VERSAILLES	22.2	41.8	0.00	0.00	928
005-0500	Brown	US 24	LAMOINE RIVER	E RIPLEY-SCHUYLER CO	469.1	39.1	3.77	3.77	21878
TOTAL =									44948

SN	County	Facility Carried	Feature Crossed	Location	Deck Length (FT)	Deck Width (FT)	Parapet (FT)	Parapet (FT)	Area (SQ FT)
009-0001	Cass	US 67 / IL 100	ILLINOIS RIVER	W EDGE BEARDSTOWN	3624	30	3.77	3.77	136045
TOTAL =									136045

•• ADAMS, BROWN, CASS, HANCOCK & SCHUYLER
••• D6 BRDGE DK SEALING 2016-3

FILE NAME =	USER NAME = Verenskif	DESIGNED -	REVISED -	STATE OF ILLINOIS DEPARTMENT OF TRANSPORTATION	SCHEDULES OF QUANTITIES				F.A. RTE.	SECTION	COUNTY	TOTAL SHEETS	SHEET NO.
p:\IL084EBIDINTEG\illinois.gov\PIWIDOT\Documents\IDOT Offices\District 6\Projects\0672\DRAWING\AD\Sheets\06-72104-sht-sched		CHECKED -	REVISED -		•••	••	12	4					
Default	PLOT SCALE = 100.0000' / in.	DATE -	REVISED -		CONTRACT NO. 72104								
	PLOT DATE = 12/9/2015	DATE -	REVISED -		SCALE:	SHEET	OF	SHEETS	STA.	TO	STA.	ILLINOIS FED. AID PROJECT	

SN	County	Facility Carried	Feature Crossed	Location	Deck Length (FT)	Deck Width (FT)	Parapet (FT)	Parapet (FT)	Area (SQ FT)
034-0001	Hancock	US 136	HAMILTON SLOUGH	.1M E KEOKUK BRIDGE					19664
034-0009	Hancock	IL 9/96	SPILLMAN CREEK	.5M W MERCER,PONTOOS	118.8	34.8	3.77	3.77	4638
034-0018	Hancock	IL 96	DRAINAGE DITCH	3.8M E NAUVOO CENTER	46.8	34	3.77	3.77	1850
034-0025	Hancock	IL 96	DRAINAGE DITCH	5.8M S NAUVOO CENTER	32	34.1	3.77	3.77	1265
034-0026	Hancock	IL 96	LARRY CREEK	5.3M N US136,HAMILTN	204.1	34	3.77	3.77	8091
034-0030	Hancock	IL 96	CHANEY CREEK	.5M N US136,HAMILTON	200	38.3	3.77	3.77	7908
034-0042	Hancock	IL 94	LONG CREEK	1.1M N US136,CARTHAG	145	35.2	3.77	3.77	5733
034-0054	Hancock	IL 96	TYSON CREEK	1.7M S IL 9, NIOTA	67.7	33	3.77	3.77	2745
034-0056	Hancock	IL 96	GRAY BAY	2.5M N US136,HAMILTN	80	34.2	3.77	3.77	3171
034-0057	Hancock	IL 96	SONORA CREEK	4.9M S NAUVOO CENTER	74	34.2	3.77	3.77	2933
034-0058	Hancock	IL 96	WAGGONER CREEK	4.2M N US136,HAMILTN	335	34.0	3.77	3.77	13246
034-0060	Hancock	IL 94	CAMP CREEK	150 ft. S IL 9/94	117.3	34.2	3.77	3.77	4638
034-0061	Hancock	IL 9/94	CAMP CREEK	JUST E IL 94 S	89	34.4	3.77	3.77	3519
034-0063	Hancock	IL 9/94	LAMOINE RIVER	5.2M E IL 94 S	164	35.2	3.77	3.77	6485
034-0065	Hancock	IL 94	SLATER CREEK	2.8M NW IL61,BOWEN	79	35.2	3.77	3.77	3124
034-0066	Hancock	US 136 EB	LAMOINE RIVER	6.8M E IL94,CARTHAGE	460.2	43.2	3.77	3.77	21878
034-0067	Hancock	IL 96	CRYSTAL CREEK	3.1M S US136,HAMILTN	63.3	35.2	3.77	3.77	2503
034-0068	Hancock	IL 96	ROCKY RUN CREEK	6.3M S WARSAW SPUR	86	35.2	3.77	3.77	3400
034-0069	Hancock	ILL 94	LAMOINE RIVER	1.4 MI N JCT 9 & 94	103	35.2	3.77	3.77	4073
034-0070	Hancock	ILL 94	S BR LAMOINE RIVER	0.6 MI N JCT IL94/9	90	35.2	3.77	3.77	3847
034-0073	Hancock	IL 94 (NB)	SLATER CREEK	1.1M N WEST PT. SPUR	108.5	42.7	3.77	3.77	5093
034-0074	Hancock	IL 94 (SB)	SLATER CREEK	1.1M N WEST PT. SPUR	108.5	42.7	3.77	3.77	5093
034-0075	Hancock	IL 96	DRAINAGE DITCH	3.3M E NAUVOO CENTER	70	34.8	3.77	3.77	2733
034-0501	Hancock	IL 94	ROCK CREEK	5.7M N US136,CARTHAG	95.1	39.7	3.77	3.77	4179
034-0502	Hancock	IL 61	FLOUR CREEK	3.6M N IL101-AUGUSTA	52.5	34.8	3.77	3.77	2050
034-0503	Hancock	US 136	IL 336	0.5 MI E CARTHAGE	202.5	69.1	3.77	3.77	14892
034-0506	Hancock	US 136 WB	PRAIRIE CREEK	2.5 MI E CARTHAGE	98	43.1	3.77	3.77	4659
034-0507	Hancock	US 136 EB	PRAIRIE CREEK	2.5 MI E CARTHAGE	98	43.1	3.77	3.77	4659
034-0508	Hancock	US 136 WB	LAMOINE RIVER	7.9MI W JCT61	461.3	43.1	3.77	3.77	21930
034-0522	Hancock	IL 96 FAP 506	RAILROAD CR	.4 M S HAMILTON	115	39.2	3.77	3.77	5375
034-0528	Hancock	IL 9	LAHARPE CREEK	3.8M E IL 94,LAHARPE	104	39.2	3.77	3.77	4861
				TOTAL=					200235

SN	County	Facility Carried	Feature Crossed	Location	Deck Length (FT)	Deck Width (FT)	Parapet (FT)	Parapet (FT)	Area (SQ FT)
085-0001	Schuyler	US 67	CRANE CREEK	2 1/2 MI SE RUSHVILL					7602
085-0005	Schuyler	IL 103	CRANE CREEK	2.4M W US 67	201.5	41.2	3.77	3.77	10016
085-0008	Schuyler	IL 100	ILLINOIS R TRIB.	3.7M N BROWNING CTR	25.4	43	3.77	3.77	1284
085-0010	Schuyler	IL 100	ILLINOIS R TRIB.	1.1M N BROWNING CTR	26	39	3.77	3.77	1210
085-0011	Schuyler	IL 100	ILLINOIS R TRIB.	.5M N BROWNING CTR	22	39	3.77	3.77	1024
085-0025	Schuyler	IL 101	WILLIAMS CREEK	2.5M E IL61-AUGUSTA	147.5	30.5	3.77	3.77	5611
085-0026	Schuyler	IL 101	HONEY BROOK	2.4M E IL 99	64.5	30.5	3.77	3.77	2454
085-0029	Schuyler	IL 99	CEDAR CREEK	.64M N CAMDEN CTR	295	35.2	3.77	3.77	12608
085-0030	Schuyler	IL 99	MISSOURI CREEK	1M N BROWN COUNTY	200	30.5	3.77	3.77	7608
085-0031	Schuyler	IL 99	LITTLE MISSOURI CR.	.25M N BROWN COUNTY	150	30.5	3.77	3.77	5706
085-0032	Schuyler	IL 100	DUTCHMAN'S CREEK	E EDGE BROWNING	78.8	31	3.77	3.77	3037
085-0033	Schuyler	IL 100	FRIDDLE BRANCH	1.9M S BROWNING CTR	80	30.5	3.77	3.77	3043
085-0035	Schuyler	IL 100	WILSON CREEK	E EDGE BLUFF CITY	98.4	32	3.77	3.77	3891
085-0036	Schuyler	IL 100	ELM CREEK	E EDGE SHELDON GROVE	99.2	32	3.77	3.77	3922
085-0038	Schuyler	IL 100	COX CREEK	1.5M N BROWNING CTR	75.5	32	3.77	3.77	2985
085-0039	Schuyler	IL 100	SUGAR CREEK	2.3M N FREDERICK	328.1	30	3.77	3.77	12317
085-0514	Schuyler	IL 101	LAMOINE RIVER	1M E IL 99	530.5	35.2	3.77	3.77	22674
085-2013	Schuyler	IL 101	LAMOINE RIVER OVERFLOW	1.5M E IL 99	33.6	38	0.00	0.00	1277
				TOTAL=					108269

•• ADAMS, BROWN, CASS, HANCOCK & SCHUYLER
••• D6 BRDGE DK SEALING 2016-3

FILE NAME =	USER NAME = Verenskif	DESIGNED -	REVISED -	STATE OF ILLINOIS DEPARTMENT OF TRANSPORTATION	SCHEDULES OF QUANTITIES				F.A. RTE.	SECTION	COUNTY	TOTAL SHEETS	SHEET NO.
p:\IL084EBIDINTEG.illinois.gov\PIWIDOT\Documents\IDOT Offices\District 6\Projects\0672104\Drawings\0672104-sht-sched		CHECKED -	REVISED -		•••	••	12	5					
Default	PLOT SCALE = 100.0000' / 1in.	DATE -	REVISED -		CONTRACT NO. 72104								
	PLOT DATE = 12/9/2015				SCALE:	SHEET	OF	SHEETS	STA.	TO	STA.	ILLINOIS FED. AID PROJECT	

SN 001-0074
OVER WHITE OAK
CREEK

SN 001-0052
OVER BEAR CREEK

SN 001-0075
OVER BRANCH
BEAR CREEK

SN 001-0076
OVER JENKINS CREEK

SN 001-0007
OVER URSA CREEK

SN 001-0008
OVER ROCK CREEK

SN 001-0082 (SB)
SN 001-0083 (NB)
OVER ROCK CREEK

SN 001-0080 (SB)
SN 001-0081 (NB)
OVER US 24

SN 001-0010
OVER HOMAN CREEK

SN 001-0031
OVER HOMAN CREEK

SN 001-0011
OVER CEDAR CREEK
& BN RR

SN 001-0050 (SB)
SN 001-0051 (NB)
OVER BN RR

SN 001-0047
OVER FAI 172

SN 001-0503
OVER CURTIS CREEK

SN 001-0024
SN 001-0070
OVER MILL CREEK

SN 001-0014
OVER GHOST
HOLLOW CREEK

SN 001-0062
SN 001-0063
OVER MILL CREEK

SN 001-0016
OVER HARKNESS
CREEK

SN 001-0086 (SB)
SN 001-0087 (NB)
OVER S. FORK
BEAR CREEK

SN 001-0077
OVER BIG NECK
CREEK

SN 001-0002
OVER BIG NECK
CREEK

SN 001-0078
OVER THURMAN
CREEK

SN 001-0003
OVER BIG NECK
CREEK

SN 001-0072
OVER S. FORK
BEAR CREEK

SN 001-0084
OVER IL 336

SN 001-0044
OVER I-172

SN 001-0054
OVER MILL CREEK

SN 001-0502
OVER BURTON CREEK

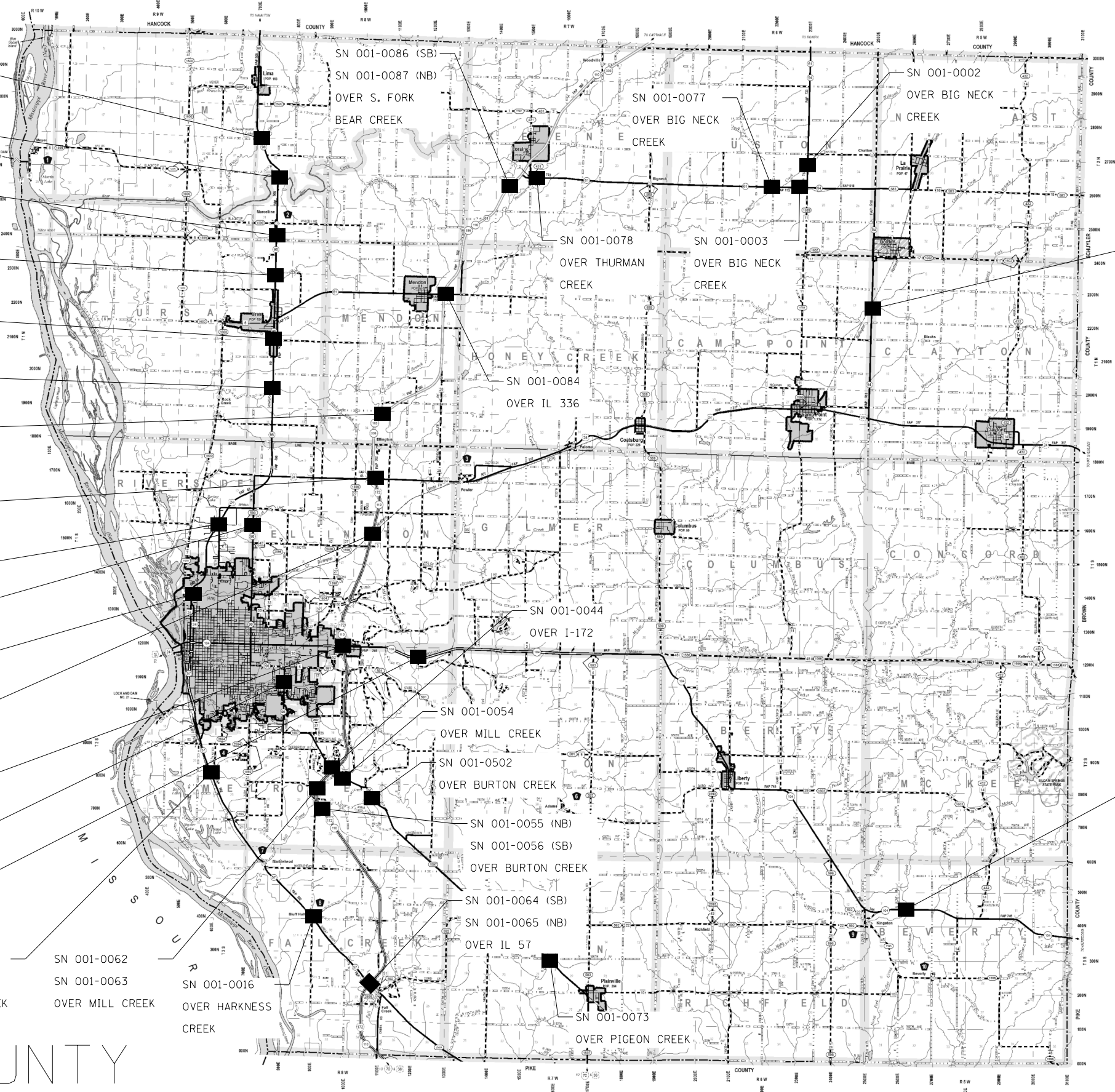
SN 001-0055 (NB)
SN 001-0056 (SB)
OVER BURTON CREEK

SN 001-0064 (SB)
SN 001-0065 (NB)
OVER IL 57

SN 001-0073
OVER PIGEON CREEK

SN 001-0507
OVER GRINDSTONE
CREEK

ADAMS COUNTY



FILE NAME =	USER NAME = Verenskif	DESIGNED -	REVISED -
pw\1\084EBIDINTEG\illinois.gov\PI\DOT\Documents\DOT Offices\District 6\Projects\0672104\Drawings\AD\Sheets\06-72104-sht-plans.dwg		CHECKED -	REVISED -
Default	PLOT DATE = 12/9/2015	DATE -	REVISED -

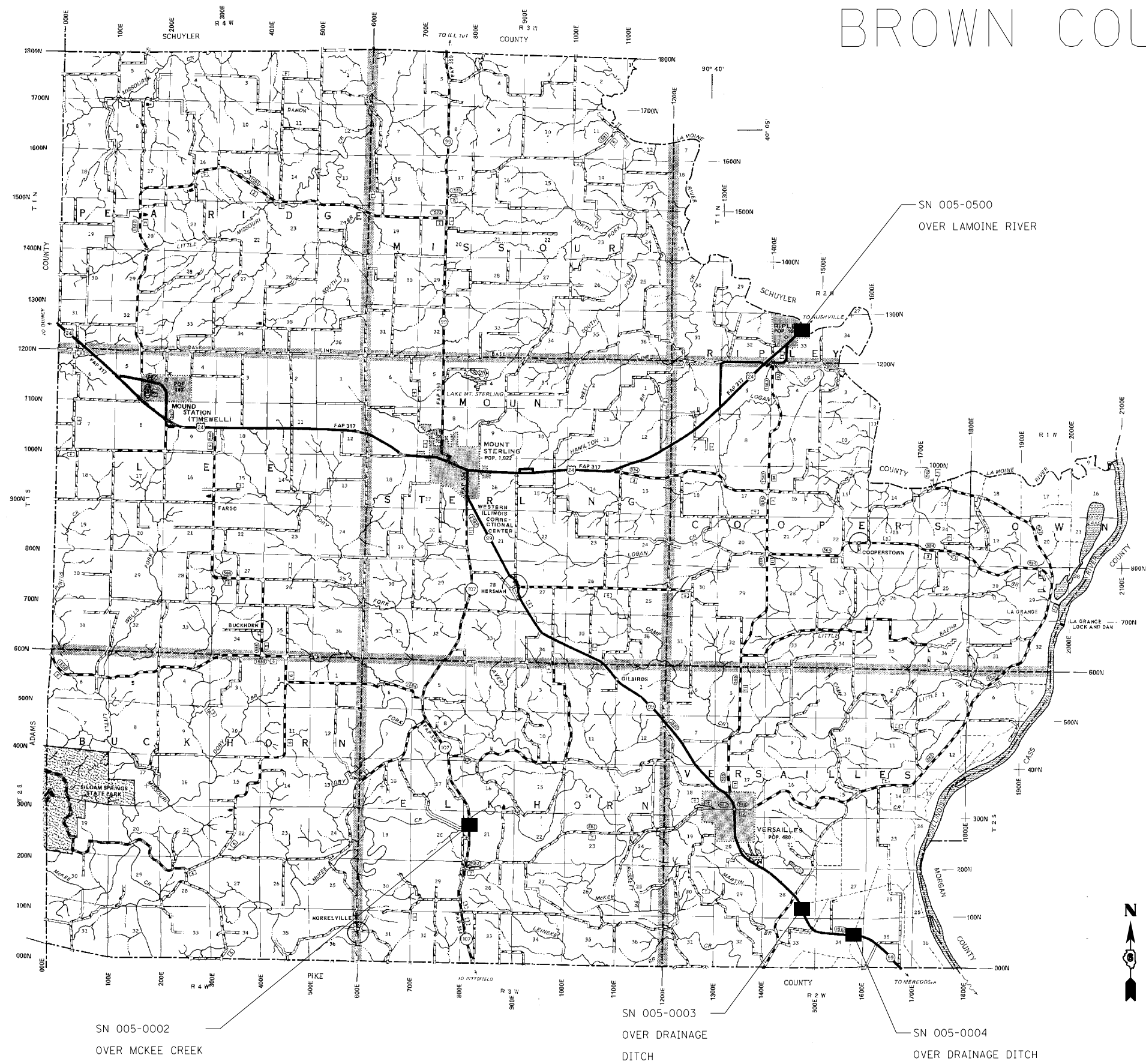
STATE OF ILLINOIS DEPARTMENT OF TRANSPORTATION	
---	--

BRIDGE LOCATION MAP				
SCALE:	SHEET	OF	SHEETS	STA. TO STA.

F.A. RTE.	SECTION	COUNTY	TOTAL SHEETS	SHEET NO.
+VAR	***	**	12	6
CONTRACT NO. 72104			ILLINOIS FED. AID PROJECT	

.. ADAMS, BROWN, CASS, HANCOCK & SCHUYLER
... D6 BRDGE DK SEALING 2016-3

BROWN COUNTY



SN 005-0002
OVER MCKEE CREEK

SN 005-0003
OVER DRAINAGE
DITCH

SN 005-0004
OVER DRAINAGE
DITCH

•• ADAMS, BROWN, CASS, HANCOCK & SCHUYLER
••• D6 BRIDGE DK SEALING 2016-3

FILE NAME =	USER NAME = Verenskif	DESIGNED -	REVISED -
pw\11\084EBID\INTEG.illinois.gov\PI\DOT\Documents\DOT Offices\District 6\Projects\0672104\Drawings\GAD\Sheets\06-72104-sht-plans		DRAWN -	REVISED -
Default	PLOT SCALE = 40.0000' / in.	CHECKED -	REVISED -
	PLOT DATE = 12/9/2015	DATE -	REVISED -

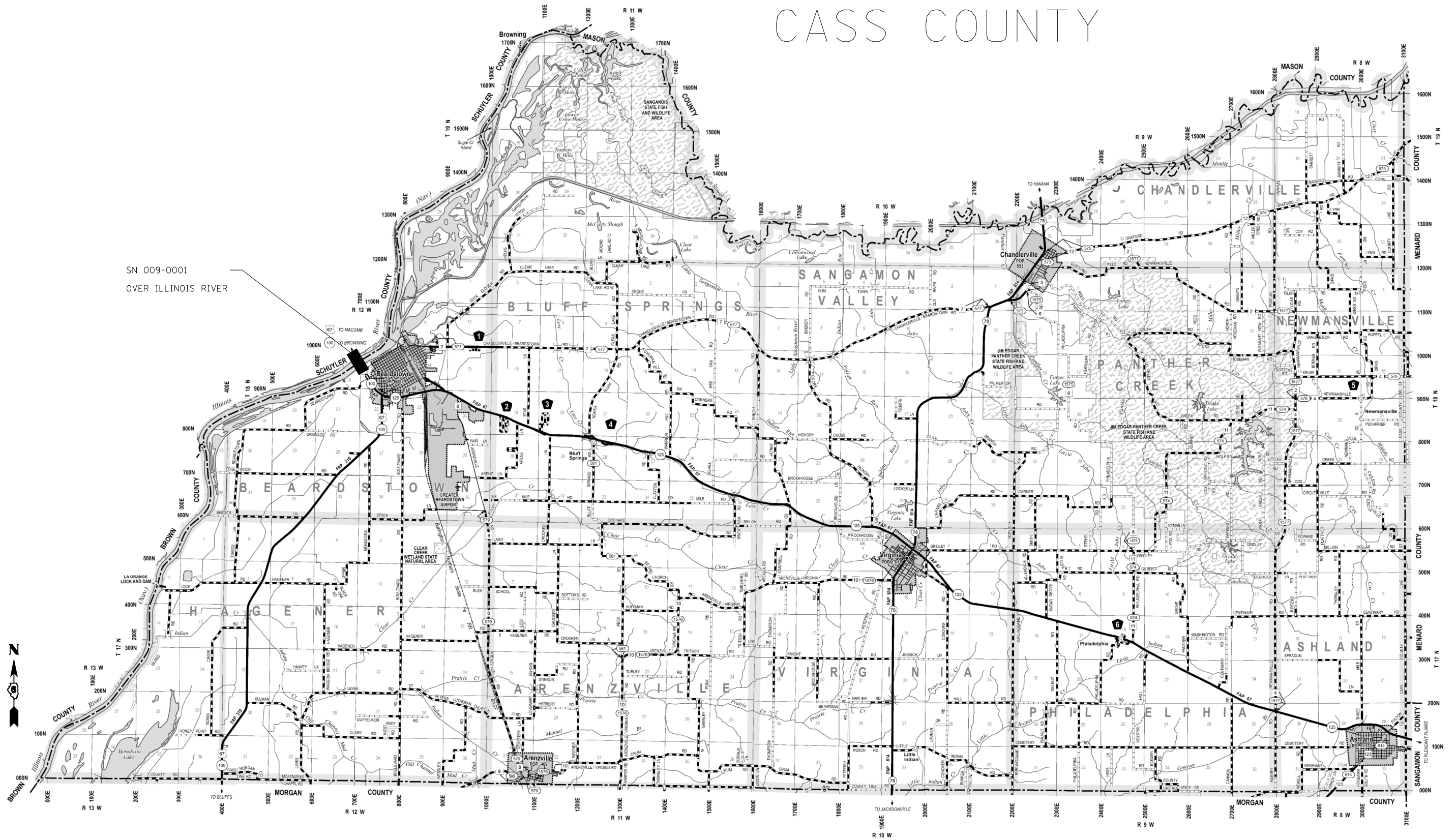
**STATE OF ILLINOIS
DEPARTMENT OF TRANSPORTATION**

**BRIDGE LOCATION MAP
BROWN COUNTY**

SCALE: SHEET OF SHEETS STA. TO STA.

F.A. RTE.	SECTION	COUNTY	TOTAL SHEETS	SHEET NO.
+VAR	•••	••	12	7
			CONTRACT NO. 72104	
ILLINOIS FED. AID PROJECT				

CASS COUNTY



SN 009-0001
OVER ILLINOIS RIVER

•• ADAMS, BROWN, CASS, HANCOCK & SCHUYLER
••• D6 BRDGE DK SEALING 2016-3

FILE NAME =	USER NAME = Verenskif	DESIGNED -	REVISED -
pw\1\084EBIDINTEG\illinois.gov\PIWIDT\Documents\DOT Offices\District 6\Projects\D672104\Drawings\Sheet\672104-sht.plt		CHECKED -	REVISED -
Default		DATE -	REVISED -
		PLOT SCALE = 40.0000' / in.	
		PLOT DATE = 12/9/2015	

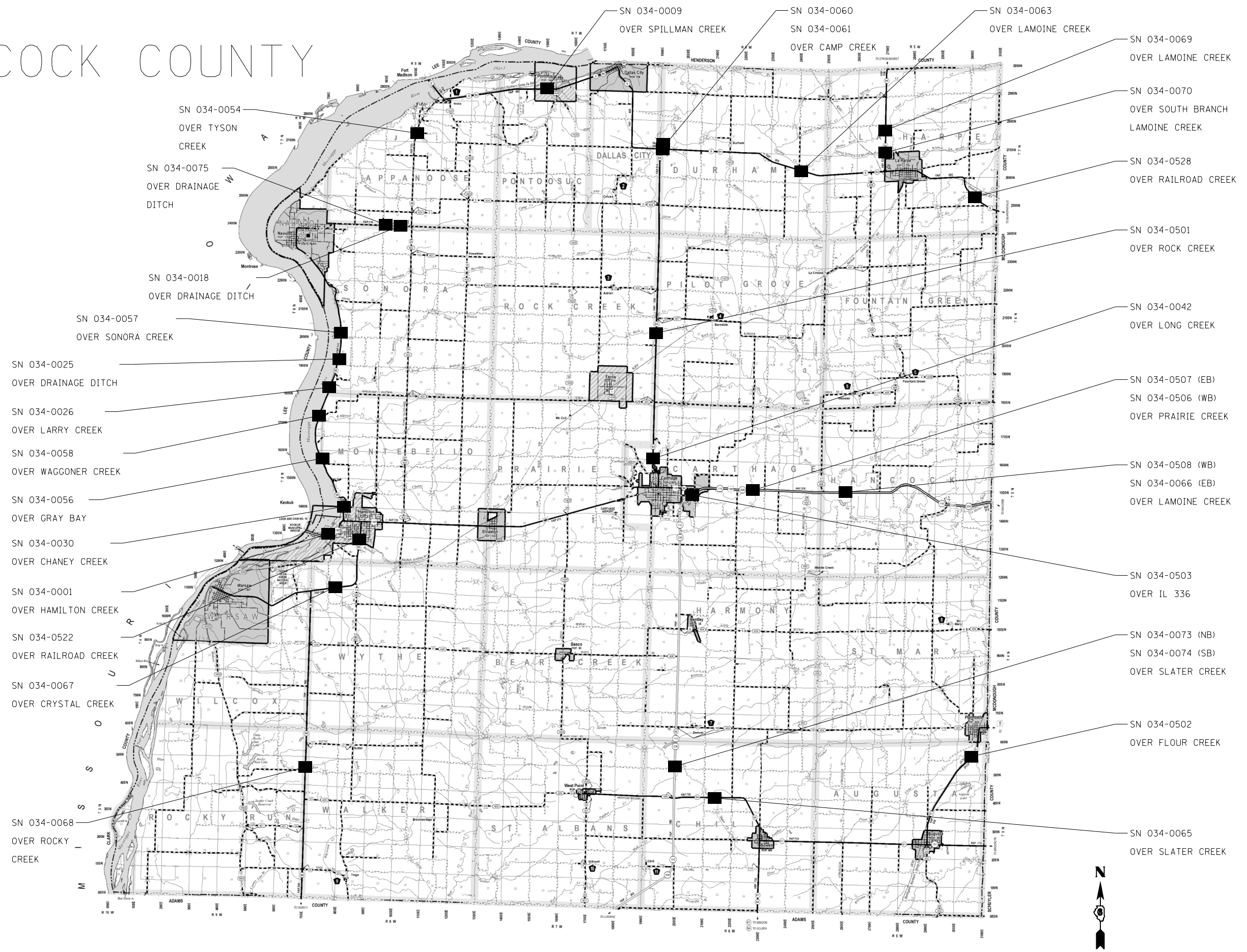
STATE OF ILLINOIS
DEPARTMENT OF TRANSPORTATION

BRIDGE LOCATION MAP

SCALE: SHEET OF SHEETS STA. TO STA.

F.A. RTE.	SECTION	COUNTY	TOTAL SHEETS	SHEET NO.
•••	•••	••	12	8
CONTRACT NO. 72104				
ILLINOIS FED. AID PROJECT				

HANCOCK COUNTY



•• ADAMS, BROWN, CASS, HANCOCK & SCHUYLER
 ••• D6 BRIDGE DK SEALING 2016-3

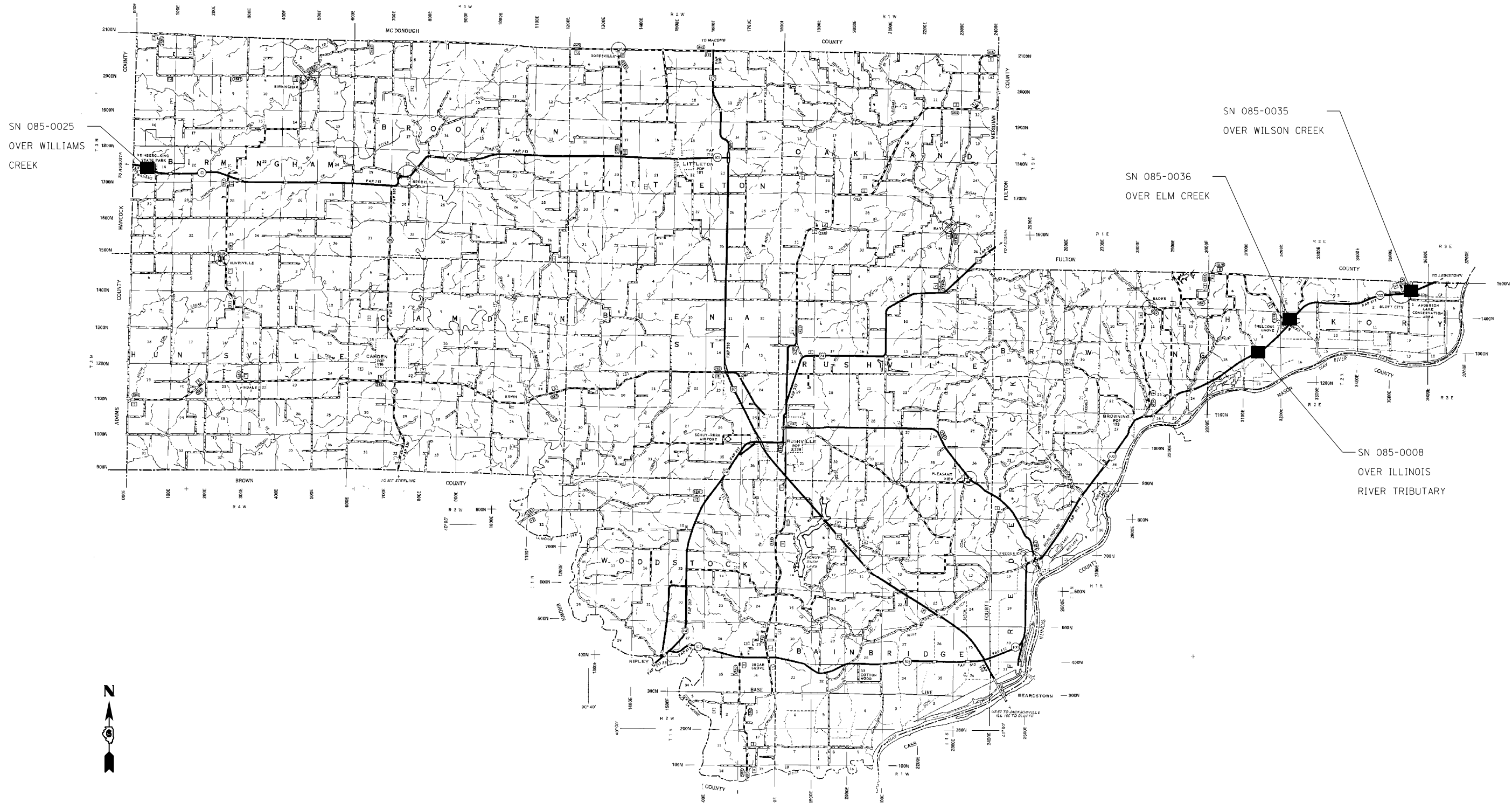
FILE NAME =	USER NAME = Verenskif	DESIGNED -	REVISED -
p:\IL\084EBID\INTEG\illinois.gov\PI\DOT\Documents\DOT Offices\District 6\Projects\D672104\Drawings\AD\Sheets\D6-72104-sht-plans.dwg		CHECKED -	REVISED -
Default	PLOT DATE = 12/9/2015	DATE -	REVISED -

**STATE OF ILLINOIS
 DEPARTMENT OF TRANSPORTATION**

BRIDGE LOCATION MAP

SCALE: SHEET OF SHEETS STA. TO STA.

F.A. RTE.	SECTION	COUNTY	TOTAL SHEETS	SHEET NO.
•••	•••	••	12	9
CONTRACT NO. 72104				
ILLINOIS FED. AID PROJECT				



SCHUYLER COUNTY

•• ADAMS, BROWN, CASS, HANCOCK & SCHUYLER
 ••• D6 BRIDGE DK SEALING 2016-3

FILE NAME =	USER NAME = Verenskif	DESIGNED -	REVISED -
pw\11084EBIDINTEG.illinois.gov\PIWIDOT\Documents\IDOT Offices\District 6\Projects\0672104\Drawings\AD\Sheets\06-72104-sht-plan.dwg		CHECKED -	REVISED -
Default	PLOT DATE = 12/9/2015	DATE -	REVISED -

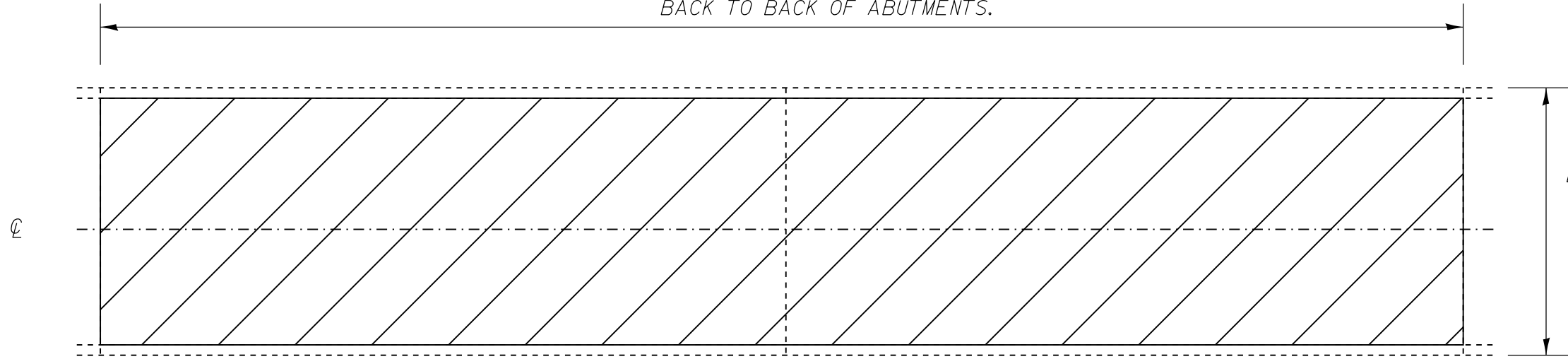
STATE OF ILLINOIS
DEPARTMENT OF TRANSPORTATION

BRIDGE LOCATION MAP

SCALE: SHEET OF SHEETS STA. TO STA.

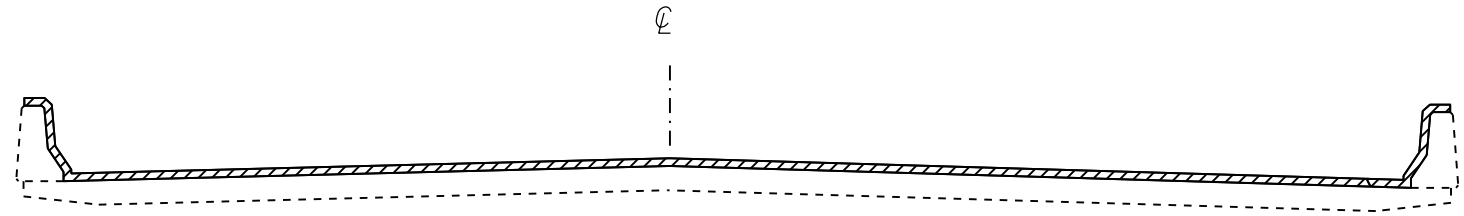
F.A. RTE.	SECTION	COUNTY	TOTAL SHEETS	SHEET NO.
••VAR	•••	••	12	11
			CONTRACT NO. 72104	
ILLINOIS FED. AID PROJECT				

LIMITS OF BRIDGE DECK SEALING
BACK TO BACK OF ABUTMENTS.

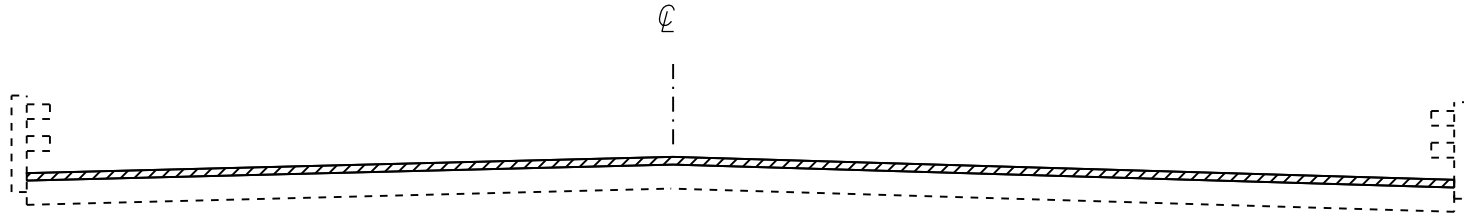


LIMITS OF
BRIDGE DECK
SEALING
OUT TO OUT

PLAN VIEW




CROSS SECTION
WITH PARAPET



CROSS SECTION
WITH BRIDGE RAIL

NOTE: BRIDGE APPROACH PAVEMENT
SHALL NOT BE SEALED

NOT TO SCALE

 AREA TO BE SEALED

•• ADAMS, BROWN, CASS, HANCOCK & SCHUYLER
•• D6 BRIDGE DECK SEALING 2016-3

FILE NAME =	USER NAME = Verenskif	DESIGNED -	REVISED -
pw:\IL\084EBIDINTEG.illinois.gov\PWIDOT\Documents\IDOT Offices\District 6\Projects\0672104\Drawings\0672104-sht-detail		CHECKED -	REVISED -
Default	PLOT DATE = 12/9/2015	DATE -	REVISED -

STATE OF ILLINOIS
DEPARTMENT OF TRANSPORTATION

BRIDGE DETAIL SHEET

SCALE: SHEET OF SHEETS STA. TO STA.

F.A. RTE.	SECTION	COUNTY	TOTAL SHEETS	SHEET NO.
••	•••	••	12	12
CONTRACT NO. 72104			ILLINOIS FED. AID PROJECT	