

DEPARTMENT OF TRANSPORTATION

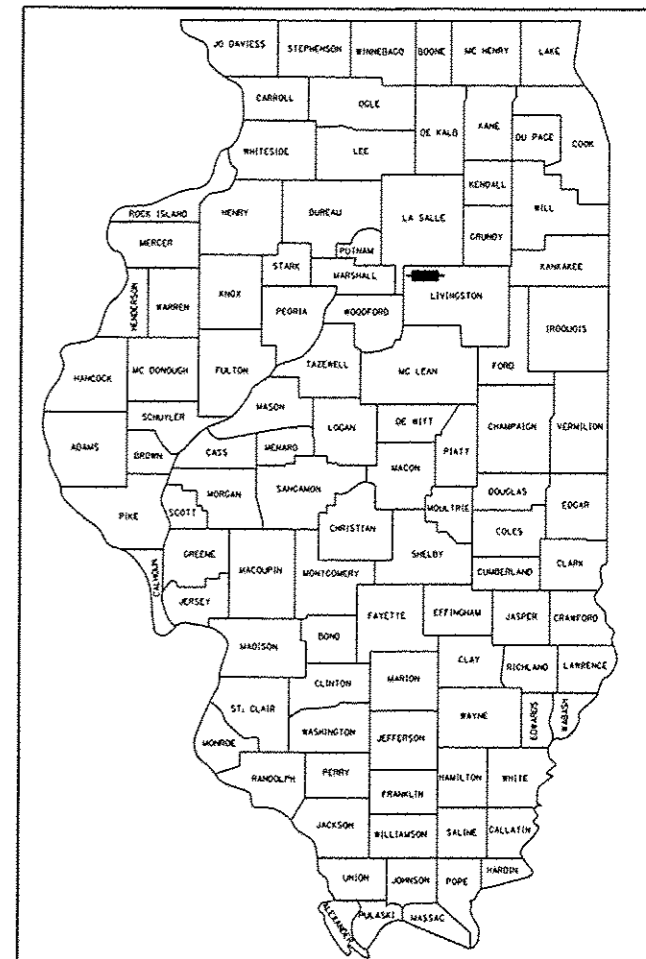
DIVISION OF HIGHWAYS

**PROPOSED
HIGHWAY PLANS**

F.A.P. ROUTE 649 (IL 17)
SECTION (108BR-1)BP
STRUCTURAL STEEL CLEANING AND PAINTING
LIVINGSTON COUNTY

F.A.P. RTE.	SECTION	COUNTY	TOTAL SHEETS	SHEET NO.
649	(108BR-1)BP	LIVINGSTON	13	1
		ILLINOIS	CONTRACT NO. 66E89	

D-93-059-15



LOCATION OF SECTION INDICATED THUS: — ■ —

RURAL	
MINOR ARTERIAL	
F.A.P. 649	
2013	
ADT	1450
P.V.	89.66%
S.U.	6.21%
M.U.	4.14%

STATE OF ILLINOIS
DEPARTMENT OF TRANSPORTATION
DIVISION OF HIGHWAYS

SUBMITTED *Dec 15th 2015*
Paul C. [Signature]
DEPUTY DIRECTOR OF HIGHWAYS, REGION ENGINEER

Jan 29 2016
Maura M. Addis PE
ENGINEER OF DESIGN AND ENVIRONMENT

Jan 29 2016
Cher Osman PE
DIRECTOR OF HIGHWAYS, CHIEF ENGINEER

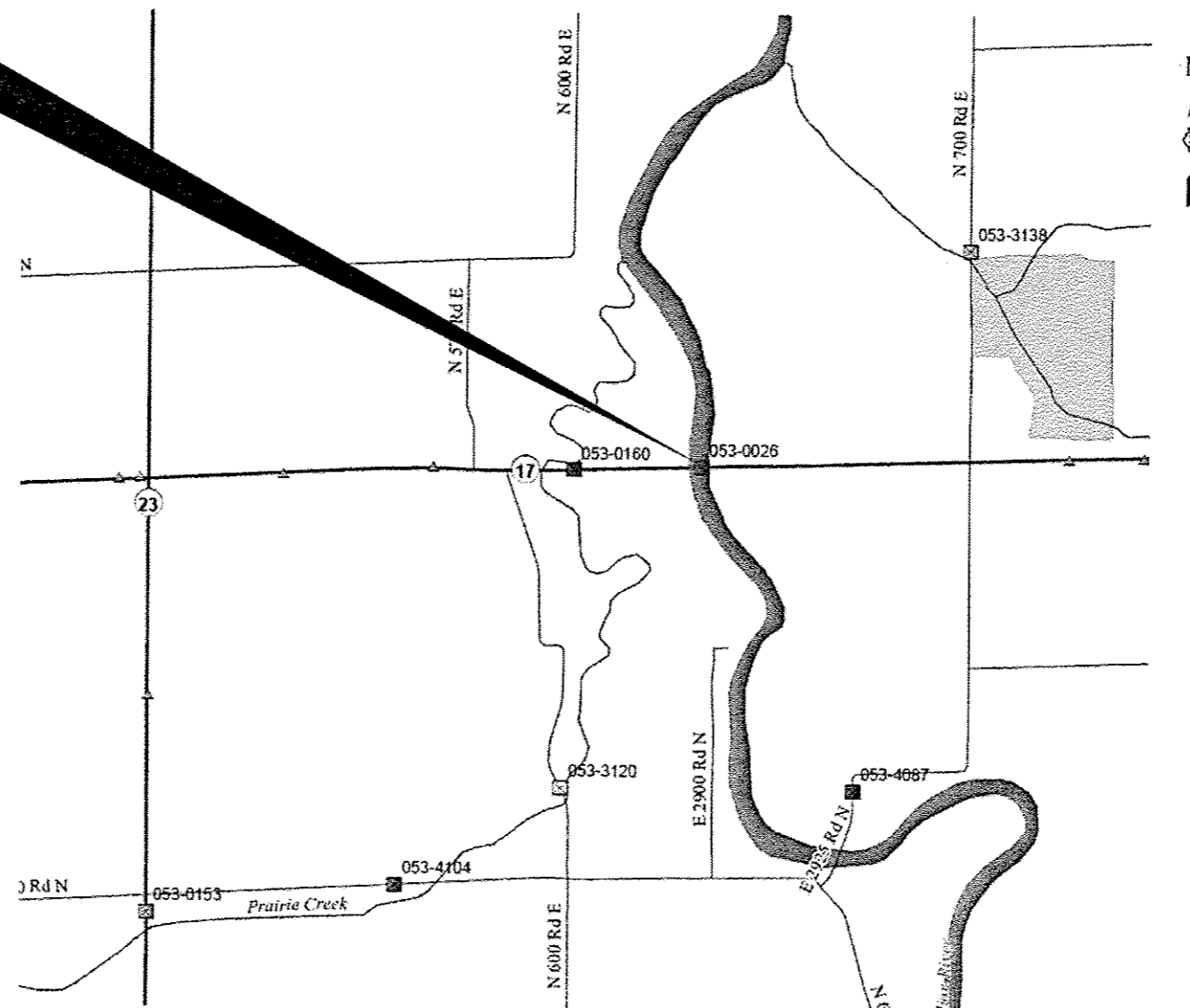
**PRINTED BY THE AUTHORITY
OF THE STATE OF ILLINOIS**

1. COVER SHEET
2. GENERAL NOTES
- 3-4. SUMMARY OF QUANTITIES
5. TYPICAL SECTIONS
6. PAVEMENT STRIPING
7. TRAFFIC CONTROL AND PROTECTION DETAILS
8. TEMPORARY INFORMATION SIGNING
- 9-13. STRUCTURE PLANS FOR STRUCTURE NO. 053-0026

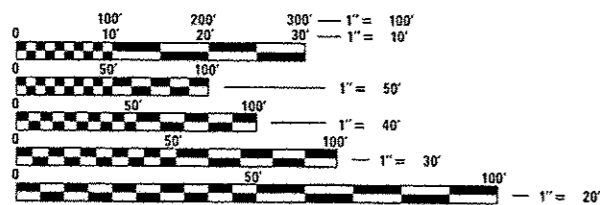
STANDARDS

- | | |
|-----------|--|
| 000001-06 | STANDARD SYMBOLS, ABBREVIATIONS AND PATTERNS |
| 701001-02 | OFF-ROAD OPERATIONS 2L, 2W, MORE THAN 15' (4.5 m) AWAY |
| 701006-05 | OFF-ROAD OPERATIONS 2L, 2W, 15' (4.5 m) TO 24" (600 mm) FROM PAVEMENT EDGE |
| 701201-04 | LANE CLOSURE, 2L, 2W, DAY ONLY, FOR SPEEDS ≥ 45 MPH |
| 701206-03 | LANE CLOSURE, 2L, 2W, NIGHT ONLY, FOR SPEEDS ≥ 45 MPH |
| 701321-14 | LANE CLOSURE, 2L, 2W, BRIDGE REPAIR WITH BARRIER |
| 701901-04 | TRAFFIC CONTROL DEVICES |
| 704001-07 | TEMPORARY CONCRETE BARRIER |

PROJECT LOCATION
S.N. 053-0026
STA. 56 + 16.00
OVER THE
VERMILION RIVER
1.3 MILES EAST
OF IL 23



POINT LOCATION



FULL SIZE PLANS HAVE BEEN PREPARED USING STANDARD ENGINEERING SCALES. REDUCED SIZED PLANS WILL NOT CONFORM TO STANDARD SCALES. IN MAKING MEASUREMENTS ON REDUCED PLANS, THE ABOVE SCALES MAY BE USED.

J.U.L.I.E.
JOINT UTILITY LOCATION INFORMATION FOR EXCAVATION
1-800-892-0123
OR 811

PROJECT ENGINEER: JOE KANNEL P.E.
UNIT CHIEF: RON WOODSHANK
TOWNSHIP: NEWTOWN
CONTRACT NO. 66E89

COMMITMENTS

GENERAL NOTES

1. STRUCTURE NO. 053-0026 SHALL BE DESIGNATED AS "LOCATION 1".

2. PLAN DIMENSIONS AND DETAILS RELATIVE TO EXISTING PLANS ARE SUBJECT TO NOMINAL CONSTRUCTION VARIATIONS. THE CONTRACTOR SHALL FIELD VERIFY EXISTING DIMENSIONS AND DETAILS AFFECTING NEW CONSTRUCTION AND MAKE NECESSARY APPROVED ADJUSTMENTS PRIOR TO CONSTRUCTION OR ORDERING OF MATERIALS. SUCH VARIATIONS SHALL NOT BE CAUSE FOR ADDITIONAL COMPENSATION FOR A CHANGE IN SCOPE OF WORK; HOWEVER, THE CONTRACTOR WILL BE PAID FOR THE QUANTITY ACTUALLY FURNISHED AT THE UNIT PRICE BID FOR THE WORK.

3. THE SSPC-OP1 "PAINTING CONTRACTOR CERTIFICATIONS" WILL BE REQUIRED FOR THIS PROJECT.

4. CLEANING AND PAINTING OF EXISTING STRUCTURAL STEEL SHALL BE AS SPECIFIED IN THE SPECIAL PROVISION FOR "CLEANING AND PAINTING EXISTING STEEL STRUCTURES" AND AS SPECIFIED BELOW.
 - a) ALL EXISTING STRUCTURAL STEEL, (INCLUDING BEAMS, DIAPHRAGMS, CROSS/LATERAL FRAMING WHEN PRESENT, BEARING ASSEMBLIES AND ALL OTHER ASSOCIATED STEEL COMPONENTS SHALL BE CLEANED PER "NEAR WHITE BLAST CLEANING - SSPC-SP-10."
 - b) ALL EXISTING STRUCTURAL STEEL SHALL BE PAINTED PER THE REQUIREMENTS OF "PAINT SYSTEM 1 - OZ/E/U".
 - 1) THE FINAL FINISH COAT FOR ALL INTERIOR STRUCTURAL STEEL BE "GRAY, MUNSELL NO. 5B 7/1".
 - 2) FINISH COAT FOR EXTERIOR FACE, BOTTOM FLANGE AND BEARING ASSEMBLIES OF THE FASCIA BEAMS SHALL BE "GREEN, MUNSELL NO. 7.5G 4/8".

5. THE CONTRACTOR SHALL BE REQUIRED TO SECURE WASTE CONTAINERS THAT REMAIN ON THE JOB SITE. THIS WILL ENTAIL THAT ALL WASTE CONTAINERS CAN NOT BE MOVED OR OPENED DURING NON-WORKING HOURS.
 - a. WORKING DAYS SHALL BE CHARGED UNTIL THE CONTRACTOR/SUBCONTRACTOR LISCENSED TO DISPOSE OF LEAD PAINT RESIDUES HAS REMOVED THE WASTE MATERIAL FROM THE JOB SITE ACCORDING TO ALL FEDERAL, STATE AND LOCAL LAWS AND ORDINANCES. IF THE LISCENSED CONTRACTOR OR SUBCONTRACTOR FAILS TO DISPOSE OF THE LEAD PAINT RESIDUES ON OR BEFORE THE SPECIFIED COMPLETION DATE, LIQUIDATED DAMAGES SHALL BE CHARGED PER CALENDAR DAY ACCORDING TO ARTICLE 109.09 OF THE STANDARD SPECIFICATIONS UNTIL SUCH TIME THAT ALL PAINT RESIDUE MATERIALS HAVE BEEN PROPERLY REMOVED AND DISPOSED OF.

STATE OF ILLINOIS
DEPARTMENT OF TRANSPORTATION
DISTRICT THREE
AS BUILT INFORMATION

SUPERVISING CONSTRUCTION FIELD ENGINEER

RESIDENT ENGINEER / TECHNICIAN

START & END DATES
OF CONSTRUCTION:

INSPECTORS:

DATE: December 15, 2015

PREPARED BY: *Don Bonil*
DISTRICT STUDIES & PLANS ENGINEER

EXAMINED BY: *Wesley Phillips*
DISTRICT CONSTRUCTION ENGINEER

Paul A. Wacker
DISTRICT MATERIALS ENGINEER

Paul A. Wacker
DISTRICT OPERATIONS ENGINEER

REV.

FILE NAME *	USER NAME * plotschr	DESIGNED - ZJL	REVISED -	STATE OF ILLINOIS DEPARTMENT OF TRANSPORTATION	GENERAL NOTES	F.A.P. RTE.	SECTION	COUNTY	TOTAL SHEETS	SHEET NO.
pc:\11884EB10\INTEG.illinois.gov\PI1001\Documents\100T Offices\District 3\Projects\0366\BRX\100T\0366\Light-Detail.dgn	CHECKED - RW	REVISED -	649			(108-BR-118P)	LIVINGSTON	13	2	
PLOT SCALE * 100.0000 ' / 1"	DATE - 7/20/15	REVISED -	CONTRACT NO. 66E89							
Default	PLOT DATE * 12/15/2015	REVISED -	ILLINOIS FED. AID PROJECT							
						SCALE:	SHEET 1	OF 1	SHEETS	STA. TO STA.

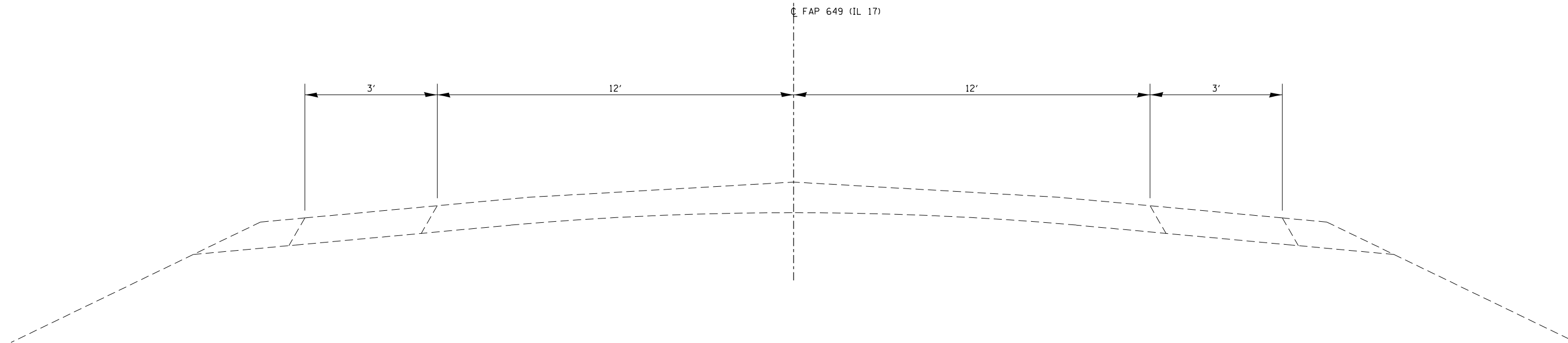
CONSTR. CODE
 BRIDGE PAINT ONLY
 100% STATE
 BRIDGE
 0014
 S.N. 053-0026

CODE NO.	ITEM	UNIT	TOTAL QUANTITY	
67100100	MOBILIZATION	LSUM	1	1
70100405	TRAFFIC CONTROL AND PROTECTION, STANDARD 701321	EACH	1	1
70100450	TRAFFIC CONTROL AND PROTECTION, STANDARD 701201	LSUM	1	1
70100455	TRAFFIC CONTROL AND PROTECTION, STANDARD 701206	LSUM	1	1
70106500	TEMPORARY BRIDGE TRAFFIC SIGNALS	EACH	1	1
70301000	WORK ZONE PAVEMENT MARKING REMOVAL	SO FT	916	916
70400100	TEMPORARY CONCRETE BARRIER	FOOT	763	763
70400200	RELOCATE TEMPORARY CONCRETE BARRIER	FOOT	763	763
70600251	IMPACT ATTENUATORS, TEMPORARY (NON- REDIRECTIVE, NARROW), TEST LEVEL 3	EACH	2	2
70600352	IMPACT ATTENUATORS, RELOCATE (NON- REDIRECTIVE, NARROW), TEST LEVEL 3	EACH	2	2
78009004	MODIFIED URETHANE PAVEMENT MARKING - LINE 4"	FOOT	1142	1142
78009006	MODIFIED URETHANE PAVEMENT MARKING - LINE 6"	FOOT	222	222
78300100	PAVEMENT MARKING REMOVAL	SO FT	111	111
X5067501	BRIDGE CLEANING AND PAINTING WARRANTY NUMBER 1	LSUM	1	1

*SPECIALITY ITEMS

CODE NO.	ITEM	UNIT	TOTAL QUANTITY	CONSTR. CODE
				BRIDGE PAINT ONLY 100% STATE BRIDGE 0014 S. N. 053-0026
	NON-			
X5060601	CONTAINMENT AND DISPOSAL OF LEAD PAINT CLEANING RESIDUES NO. 1	LSUM	1	1
Z0010501	CLEANING AND PAINTING STEEL BRIDGE NO. 1	LSUM	1	1

2



TYPICAL SECTION

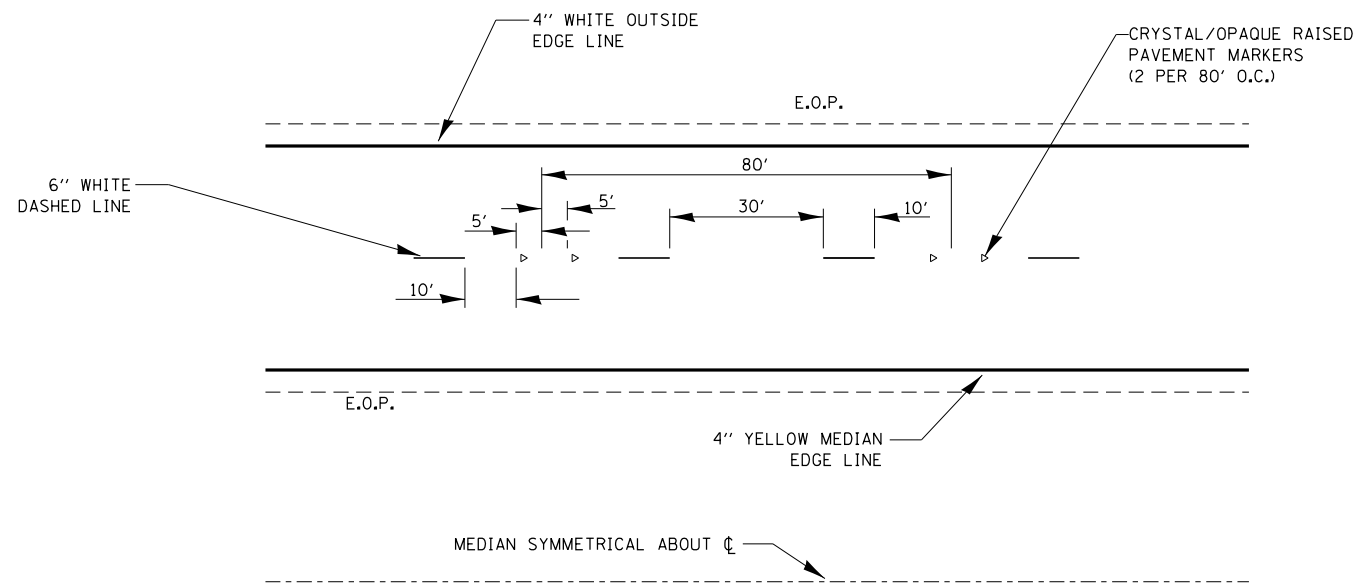
FILE NAME =	USER NAME = pletschr	DESIGNED - ZJL	REVISED -
pw:\IL\084EBIDINTEG.illinois.gov\PWIDOT\Documents\DOT Offices\District 3\Projects\0366EBR\Drawings\9366EBR\9366EBR-Details.dgn			REVISED -
Default	PLOT SCALE = 100.0000' / 1in.	CHECKED - RW	REVISED -
	PLOT DATE = 12/15/2015	DATE - 7/20/15	REVISED -

**STATE OF ILLINOIS
DEPARTMENT OF TRANSPORTATION**

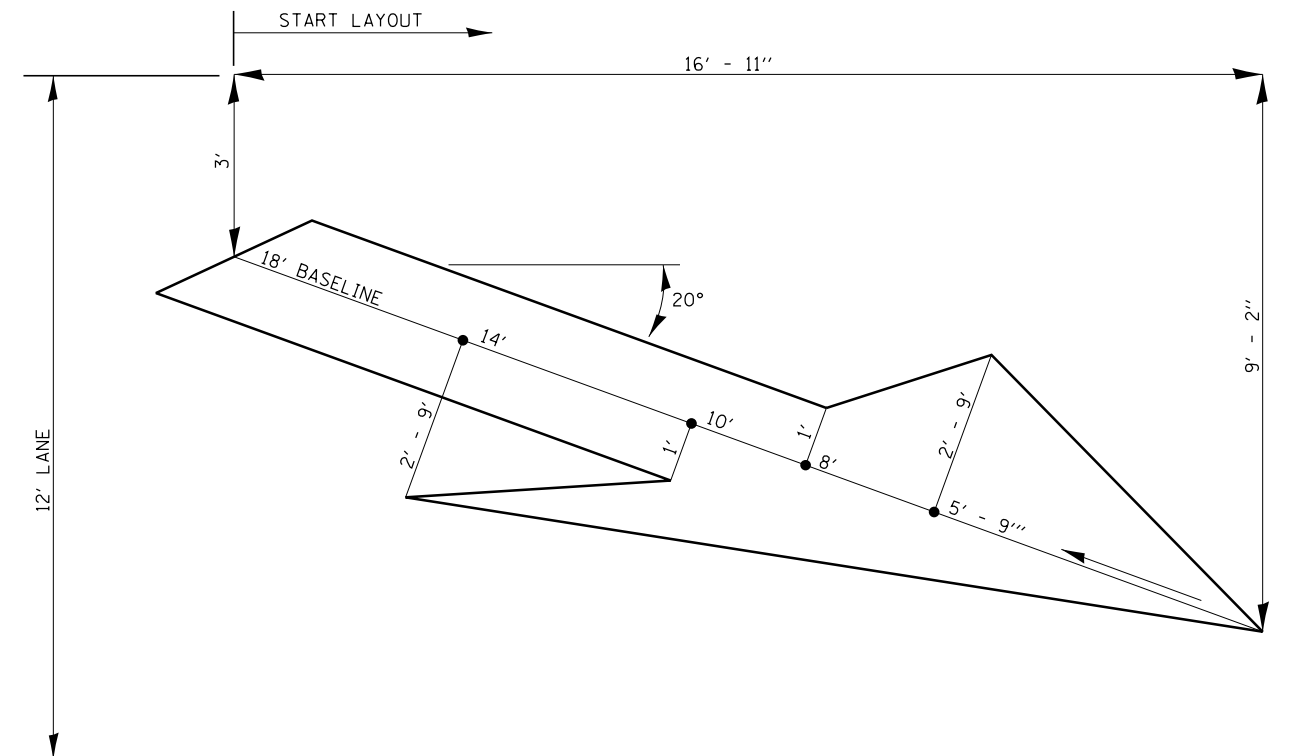
TYPICAL SECTIONS

SCALE: SHEET 1 OF 1 SHEETS STA. TO STA.

F.A.P. RTE.	SECTION	COUNTY	TOTAL SHEETS	SHEET NO.
649	(108BR-1)BP	LIVINGSTON	13	5
ILLINOIS FED. AID PROJECT			CONTRACT NO. 66E89	



TYPICAL PAVEMENT MARKINGS



LARGE MERGE ARROWS
42 Sq. Ft.

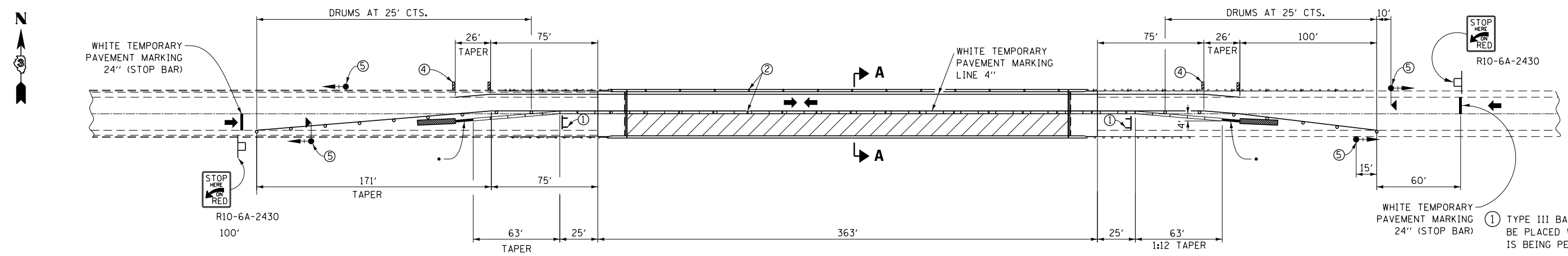
FILE NAME =	USER NAME = pletschr	DESIGNED - ZJL	REVISED -
pw:\IL\084EBIDINTEG.illinois.gov\PWIDOT\Documents\IDOT Offices\District 3\Projects\03666\BROWNDATA\B3666\Right-details.dgn		CHECKED - RW	REVISED -
Default	PLOT SCALE = 100.0000' / in.	DATE - 7/20/15	REVISED -

STATE OF ILLINOIS
DEPARTMENT OF TRANSPORTATION

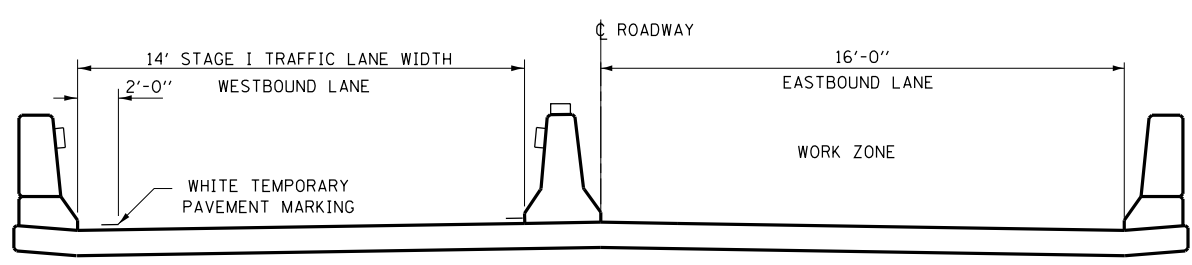
PAVEMENT STRIPING

SCALE: SHEET 1 OF 1 SHEETS STA. TO STA.

F.A.P. RTE.	SECTION	COUNTY	TOTAL SHEETS	SHEET NO.
649	(108BR-1)BP	LIVINGSTON	13	6
CONTRACT NO. 66E89				
ILLINOIS FED. AID PROJECT				

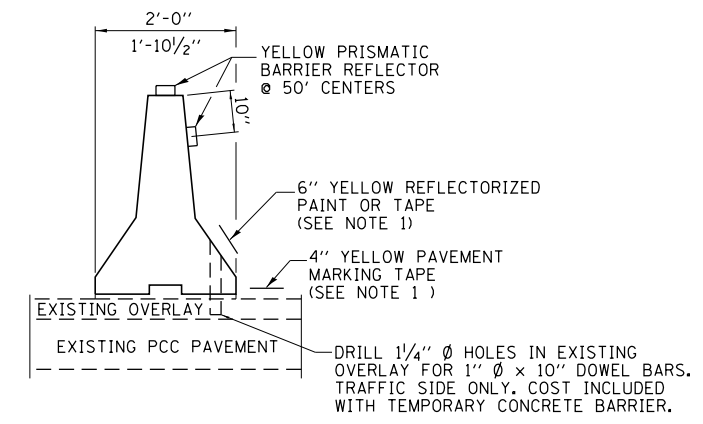


**STAGE I
TEMPORARY CONCRETE BARRIER DETAILS**



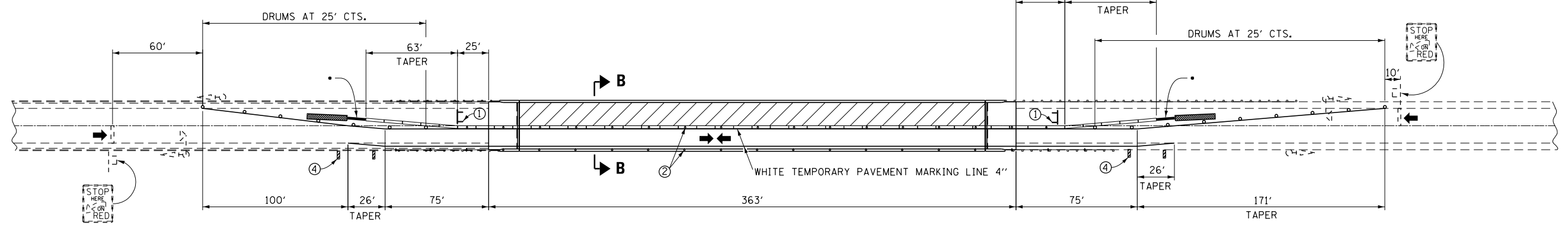
**SECTION A-A
LOOKING EAST**

* ANCHORED ACCORDING TO ARTICLE 704.04

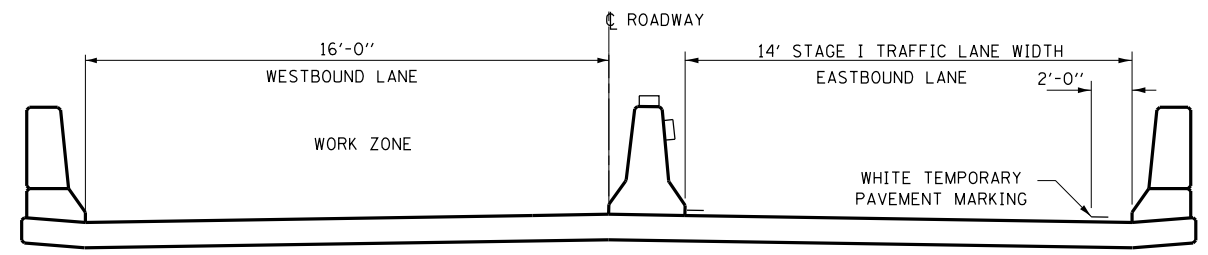


TEMPORARY CONCRETE BARRIER

- ① TYPE III BARRICADE TO BE PLACED WHEN NO WORK IS BEING PERFORMED.
- ② GUARDRAIL/BARRIER WALL REFLECTORS AT 25' (7.6 M) CTS. SEE STANDARDS 704001 & 782006.
- ③ WHEN TEMP. BRIDGE RAIL IS SPECIFIED, IT SHALL BE CONNECTED TO THE TEMP. CONC. BARRIER USING A TRAFFIC BARRIER TERMINAL TYPE 11.
- ④ THESE VERTICAL PANELS AT 25' (7.6 M) CTS. MAY BE OMITTED WHEN THE GUARDRAIL, W/MARKERS, EXTENDS TO AT LEAST THIS POINT ON THE TAPER.
- ⑤ THE EDGE OF THE POST MOUNTED SIGNAL HEAD SHALL BE BETWEEN 24 (610) AND 6' (1.8 M) FROM EDGE OF SHOULDER.



**STAGE II
TEMPORARY CONCRETE BARRIER DETAILS**



**SECTION B-B
LOOKING EAST**

- SYMBOLS**
- WORK AREA
 - SIGN
 - TYPE III BARRICADE
 - TRAFFIC SIGNAL W/BACK PLATE
 - TRAFFIC SIGNAL W/BACK PLATE AND MICROWAVE DETECTOR
 - DRUM WITH STEADY BURNING BI-DIRECTIONAL LIGHT
 - TEMPORARY CONCRETE BARRIER
 - DOUBLE VERTICAL PANEL (SEE DETAIL)
 - CRYSTAL, BIDIRECTIONAL GUARDRAIL/BARRIER WALL REFLECTOR
 - IMPACT ATTENUATOR

GENERAL NOTES

THIS TRAFFIC CONTROL DETAIL SHALL BE USED IN CONJUNCTION WITH "TRAFFIC CONTROL AND PROTECTION, STANDARD 701321". WHEN A CONFLICT ARISES, THIS DETAIL SHALL TAKE PRESEDANCE

TRAFFIC SIGNALS SHALL BE OPERATIONAL ONLY WHEN ALL TRAFFIC CONTROLS ARE IN PLACE. WHEN TRAFFIC SIGNALS ARE NOT IN OPERATION, FLAGGERS SHALL BE USED AND TRAFFIC CONTROL SHALL CONFORM TO STANDARD 701201 OR 701206.

TEMPORARY CONCRETE BARRIER SHALL BE ACCORDING TO STANDARD 704001.

EXISTING OR TEMPORARY PAVEMENT MARKINGS SHALL BE ON BOTH SIDES OF OPEN LANE FROM STOP BAR TO STOP BAR.

ALL DIMENSIONS ARE IN INCHES.

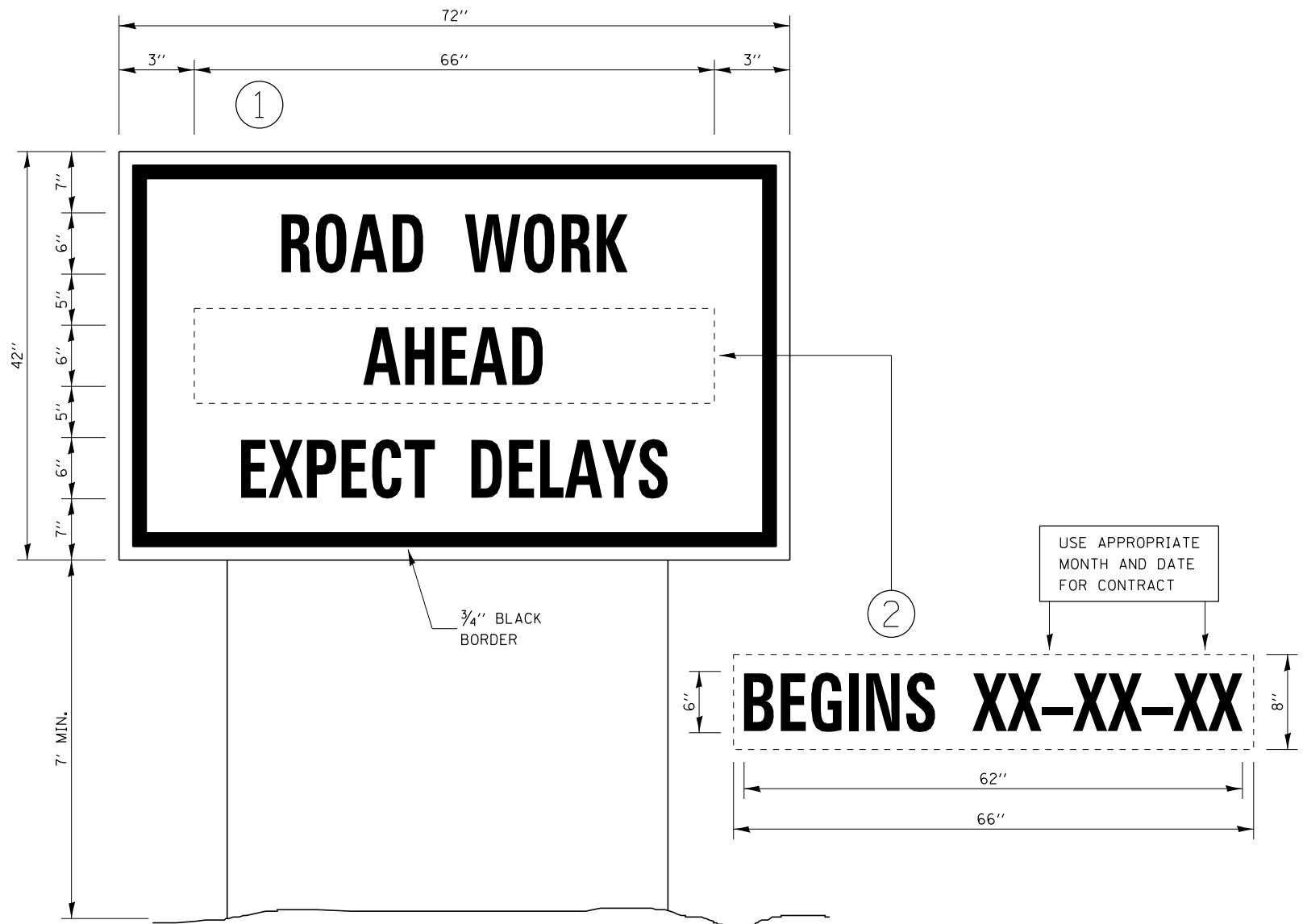
FILE NAME =	USER NAME = pletschr	DESIGNED - ZJL	REVISED -
pw\11084EBIDINTEG.illinois.gov\PIWIDOT\Documents\DOT Offices\District 3\Projects\03666\Drawings\Light-details.dgn		CHECKED - RW	REVISED -
Default	PLOT SCALE = 100.0000' / in.	DATE - 7/20/15	REVISED -
	PLOT DATE = 12/15/2015		

STATE OF ILLINOIS
DEPARTMENT OF TRANSPORTATION

TRAFFIC CONTROL AND PROTECTION DETAILS

SCALE: SHEET 1 OF 1 SHEETS STA. TO STA.

F.A.P. RTE. 649	SECTION (108BR-1)BP	COUNTY LIVINGSTON	TOTAL SHEETS 13	SHEET NO. 7
				CONTRACT NO. 66E89
ILLINOIS FED. AID PROJECT				

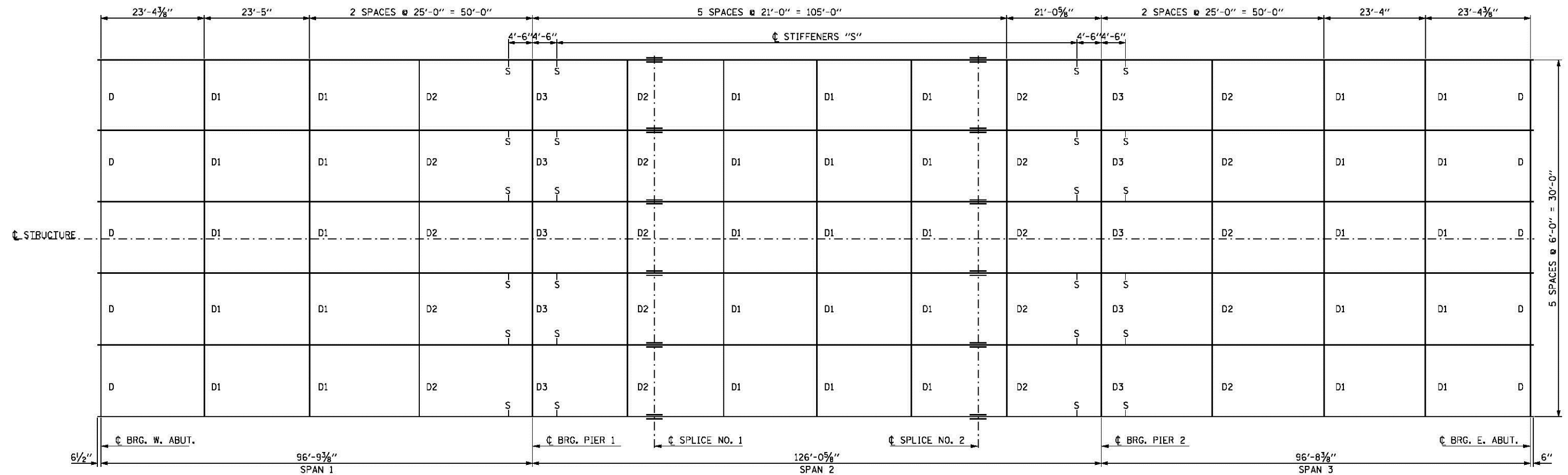


TEMPORARY INFORMATION SIGNING

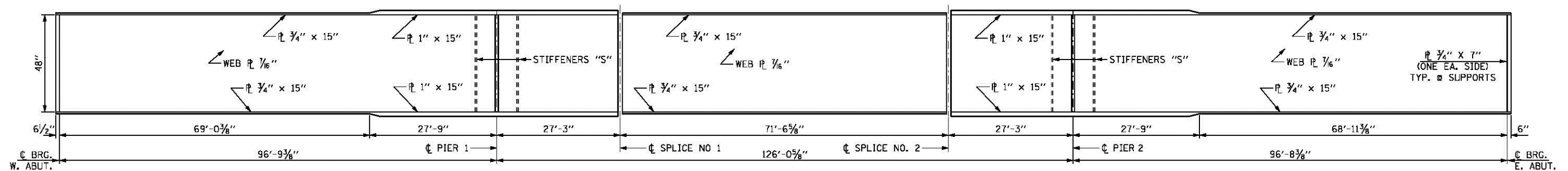
NOTES:

1. USE 6" D BLACK LETTERING ON FLOURESENT ORANGE BACKGROUND.
2. ERECT SIGNS AT LOCATIONS IN ADVANCE OF THE "ROAD CONSTRUCTION AHEAD" SIGNS AS DIRECTED BY THE ENGINEER.
3. ERECT SIGN ① WITH INSTALLED PANEL ② A MINIMUM OF ONE WEEK PRIOR TO THE START OF THE LANE CLOSURE.
4. REMOVE PANEL ② ON THAT DATE.
5. SEE SPECIAL PROVISION "TEMPORARY INFORMATION SIGNING" FOR ADDITIONAL INFORMATION.
6. WILL BE PAID FOR PER SQ FT AS "TEMPORARY INFORMATION SIGNING". EACH SIGN = 21 SQ FT AND THE DATE PANEL ② WILL NOT BE MEASURED SEPARATELY FOR PAYMENT.

FILE NAME =	USER NAME = pletschr	DESIGNED - ZJL	REVISED -	STATE OF ILLINOIS DEPARTMENT OF TRANSPORTATION	TEMPORARY INFORMATION SIGNING	F.A.P. RTE.	SECTION	COUNTY	TOTAL SHEETS	SHEET NO.
pw:\IL\084EBIDINTEG.illinois.gov\PIWIDOT\Documents\DOT Offices\District 3\Projects\0366\BROWND\B366E\Light-details.dgn	DRAWN	CHECKED - RW	REVISED -			649	(108BR-1)BP	LIVINGSTON	13	8
Default	PLOT SCALE = 100.0000' / in.	DATE - 7/20/15	REVISED -			CONTRACT NO. 66E89				
	PLOT DATE = 12/15/2015	DATE - 7/20/15	REVISED -			ILLINOIS FED. AID PROJECT				
				SCALE:		SHEET 1 OF 1 SHEETS		STA. TO STA.		



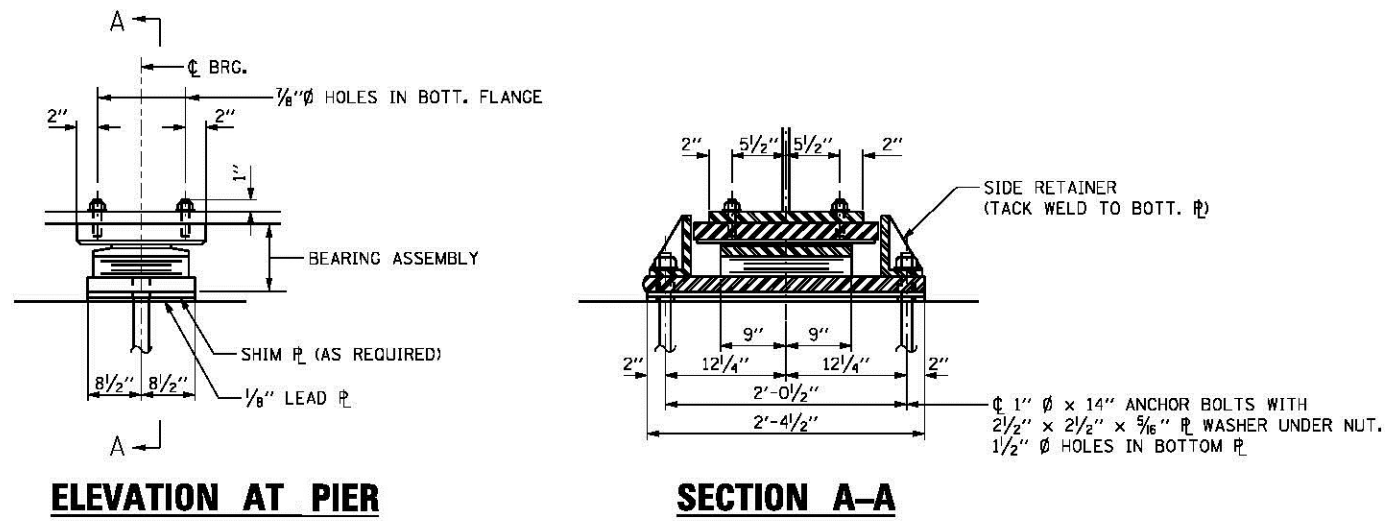
FRAMING PLAN



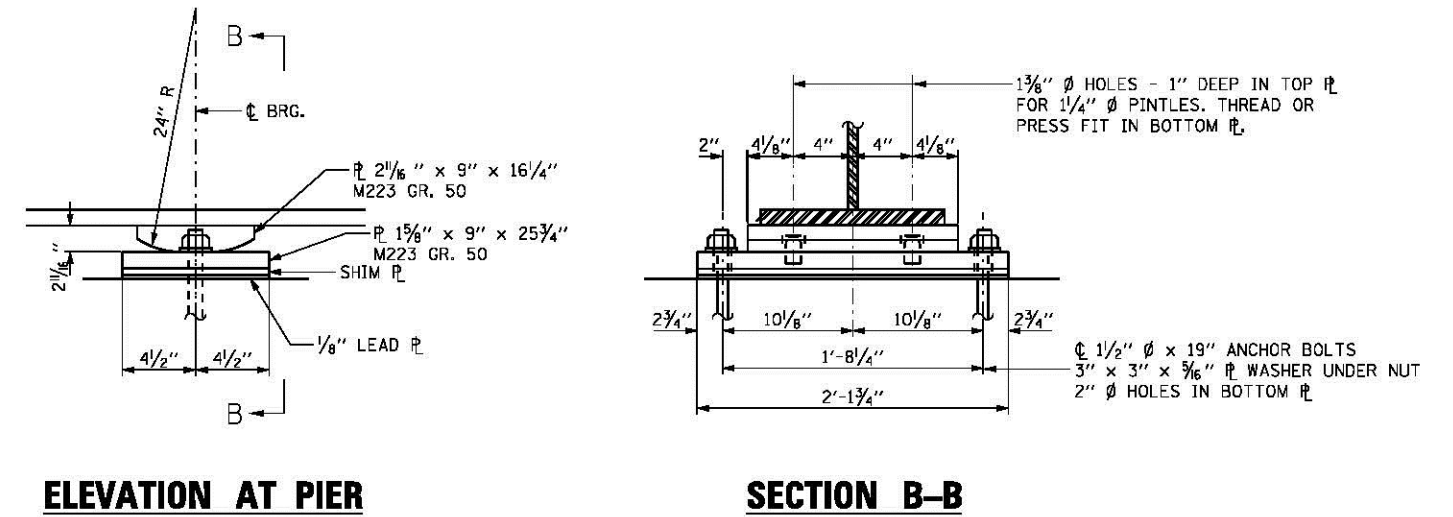
GIRDER ELEVATION

FOR INFORMATION ONLY

FILE NAME =	USER NAME = pletachtr	DESIGNED - ZJL	REVISED -	STATE OF ILLINOIS DEPARTMENT OF TRANSPORTATION	STRUCTURAL STEEL DETAILS FOR STRUCTURE NO. 053-0026	F.A.P. RTE. =	SECTION =	COUNTY =	TOTAL SHEETS =	SHEET NO. =	
Default	PLOT SCALE = 1/8" = 1' / 32"	CHECKED - RW	REVISED -			649	(108BR-11BP)	LASALLE	13	10	
	PLOT DATE = 12/15/2015	DATE = 7/16/15	REVISED -			SCALE: SHEET 2 OF 5 SHEETS STA. 401+74.97 TO STA. 404+94.50		CONTRACT NO. 66E89			
						ILLINOIS FED. AID PROJECT					

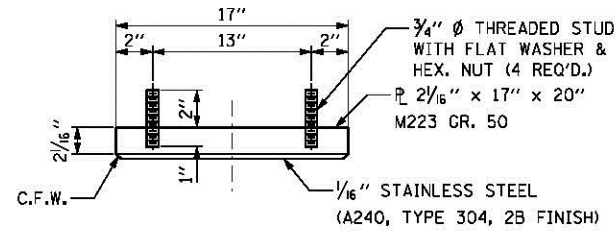


TYPE II TFE ELASTOMERIC EXP. BRG. AT PIER NO. 1

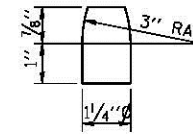


ELEVATION AT PIER

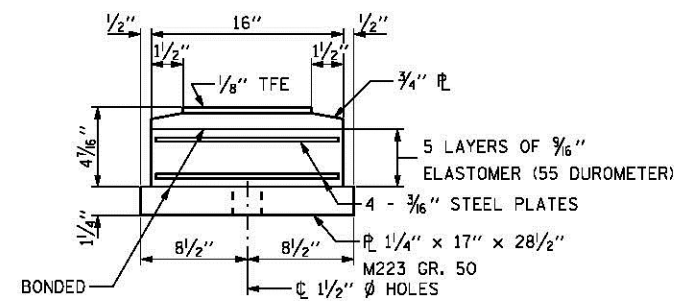
SECTION B-B



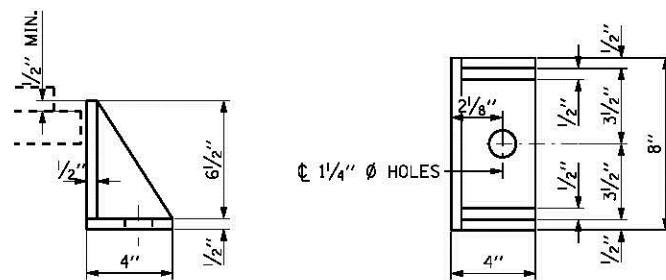
TOP BEARING ASSEMBLY



PINTLE



BOTTOM BEARING ASSEMBLY



SIDE RETAINER

FOR INFORMATION ONLY

FILE NAME =	USER NAME = pletachtr	DESIGNED - ZJL	REVISED -	STATE OF ILLINOIS DEPARTMENT OF TRANSPORTATION	BEARING DETAILS FOR STRUCTURE NO. 053-0026	F.A.P. RTE. 649	SECTION (108BR-11BP)	COUNTY LASALLE	TOTAL SHEETS 13	SHEET NO. 13		
Default	PLOT SCALE = 1/8" = 1'-0"	CHECKED - RW	REVISED -			SCALE:	SHEET 5 OF 5 SHEETS	STA. 401+74.97 TO STA. 404+94.50	CONTRACT NO. 66E89			
	PLOT DATE = 12/15/2015	DATE = 7/16/15	REVISED -			ILLINOIS FED. AID PROJECT						