

STATE OF ILLINOIS
 DEPARTMENT OF TRANSPORTATION
 DIVISION OF HIGHWAYS

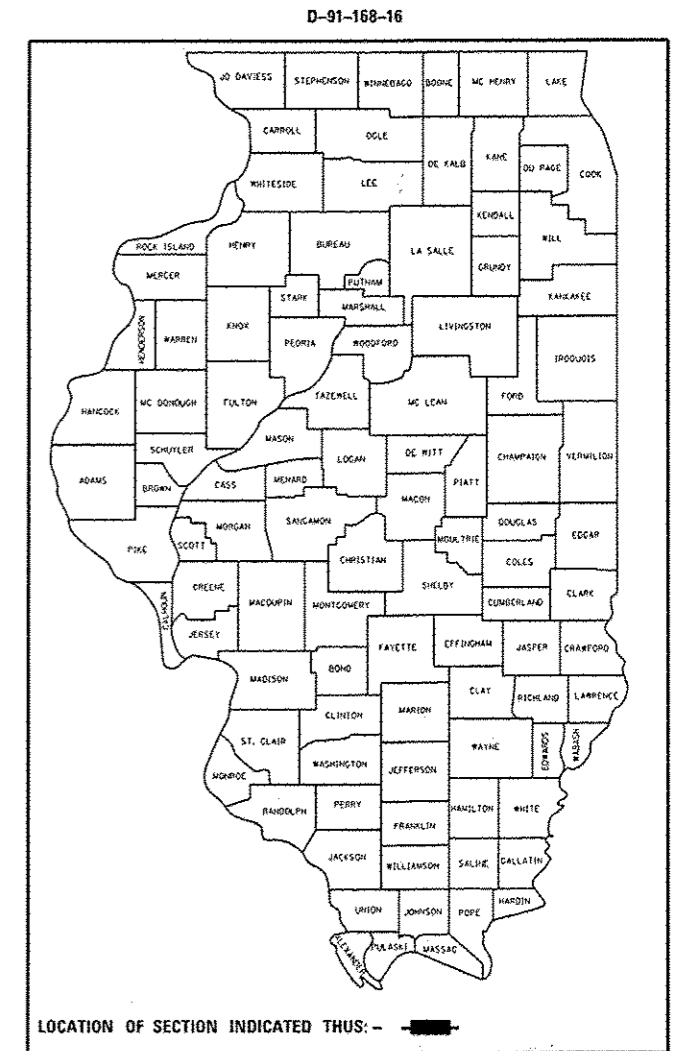
F.A. RTE.	SECTION	COUNTY	TOTAL SHEETS	SHEET NO.
VAR.	2015-084T	COOK	22	1
		ILLINOIS	CONTRACT NO. 62B86	

FOR INDEX OF SHEETS, SEE SHEET NO. 2

**PROPOSED
 HIGHWAY PLANS**

VARIOUS ROUTES
 VARIOUS LOCATIONS
 SECTION 2015-084T
 BRIDGE DRAINAGE SYSTEM REPAIRS
 COOK COUNTY

C-91-168-16



SEE LOCATION MAPS
 SHEETS 5 - 6

C.U.A.N
 CHICAGO UTILITY ALERT NETWORK
 1-312-744-7800

J.U.L.I.E.
 JOINT UTILITY LOCATION INFORMATION FOR EXCAVATION
 1-800-892-0123
 OR 811

PROJECT ENGINEER: J. ALAIN MIDY (847) 221-3056
 PROJECT MANAGER: ISSAM RAYYAN (847) 705-4178

CONTRACT NO. 62B86

STATE OF ILLINOIS
 DEPARTMENT OF TRANSPORTATION
 DIVISION OF HIGHWAYS

SUBMITTED December 11, 2015

John F. Adams, Jr.
 DEPUTY DIRECTOR OF HIGHWAYS, REGIONAL ENGINEER

Maureen M. Addis, P.E.
 ENGINEER OF DESIGN AND ENVIRONMENT

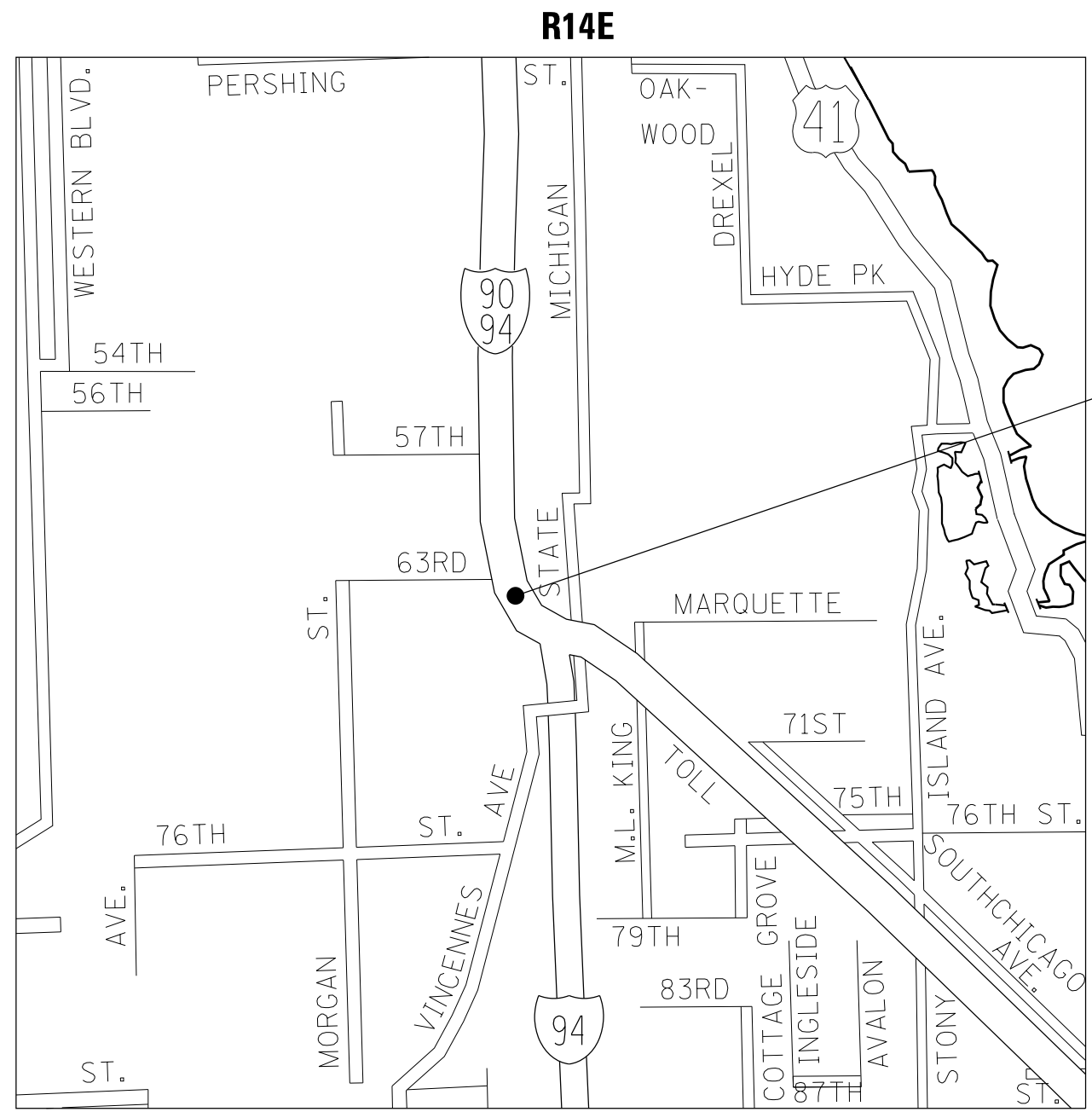
Jan 29, 2016

Orin DeMott, P.E.
 DIRECTOR OF HIGHWAYS, CHIEF ENGINEER

PRINTED BY THE AUTHORITY
 OF THE STATE OF ILLINOIS

DESCRIPTION	SCHEDULE			
	LOC. 1	LOC. 2	LOC. 3	
	016-1007	016-0908	016-0004 &016-0005	
TRAFFIC CONTROL AND PROTECTION, STANDARD 701601	x			
NIGHTTIME WORK ZONE LIGHTING	x		x	
TRAFFIC CONTROL AND PROTECTION, (EXPRESSWAYS)	x		x	
BRIDGE DRAINAGE SYSTEM REPAIRS	500	25	10	
CLEANING DRAINAGE SYSTEM	x			
RAILROAD PROTECTIVE LIABILITY INSURANCE	x	x	x	

T38N



LOCATION 1 (SN 016-1007)
WENTWORTH OVER DAN RYAN
IN THE CITY OF CHICAGO



LAKE TOWNSHIP

TRAFFIC DATA

LOCATION 1 (SN 016-1007)

WENTWORTH:
2014 ADT = 1,000
POSTED SPEED LIMIT = 40 MPH

DAN RYAN AND CTA:
2014 ADT = 300,100
POSTED SPEED LIMIT = 55 MPH

FILE NAME =	USER NAME = dahhr	DESIGNED -	REVISED -
p:\11\084EBID\INTEG\illinois.gov\PWIDOT\Documents\DOT Offices\District 1\Projects\DI16816\Drawings\Design\DI16816-shr-Location Map.dwg		DRAWN -	REVISED -
Default	PLOT SCALE = 100.0000' / in.	CHECKED -	REVISED -
	PLOT DATE = 12/21/2015	DATE -	REVISED -

STATE OF ILLINOIS
DEPARTMENT OF TRANSPORTATION

LOCATION MAP			
LOCATION 1			
SCALE:	SHEET 1	OF 2 SHEETS	STA. TO STA.

F.A. RTE.	SECTION	COUNTY	TOTAL SHEETS	SHEET NO.
VAR.	2015-084T	COOK	22	5
CONTRACT NO. 62B86				
ILLINOIS FED. AID PROJECT				



CALUMET TOWNSHIPS

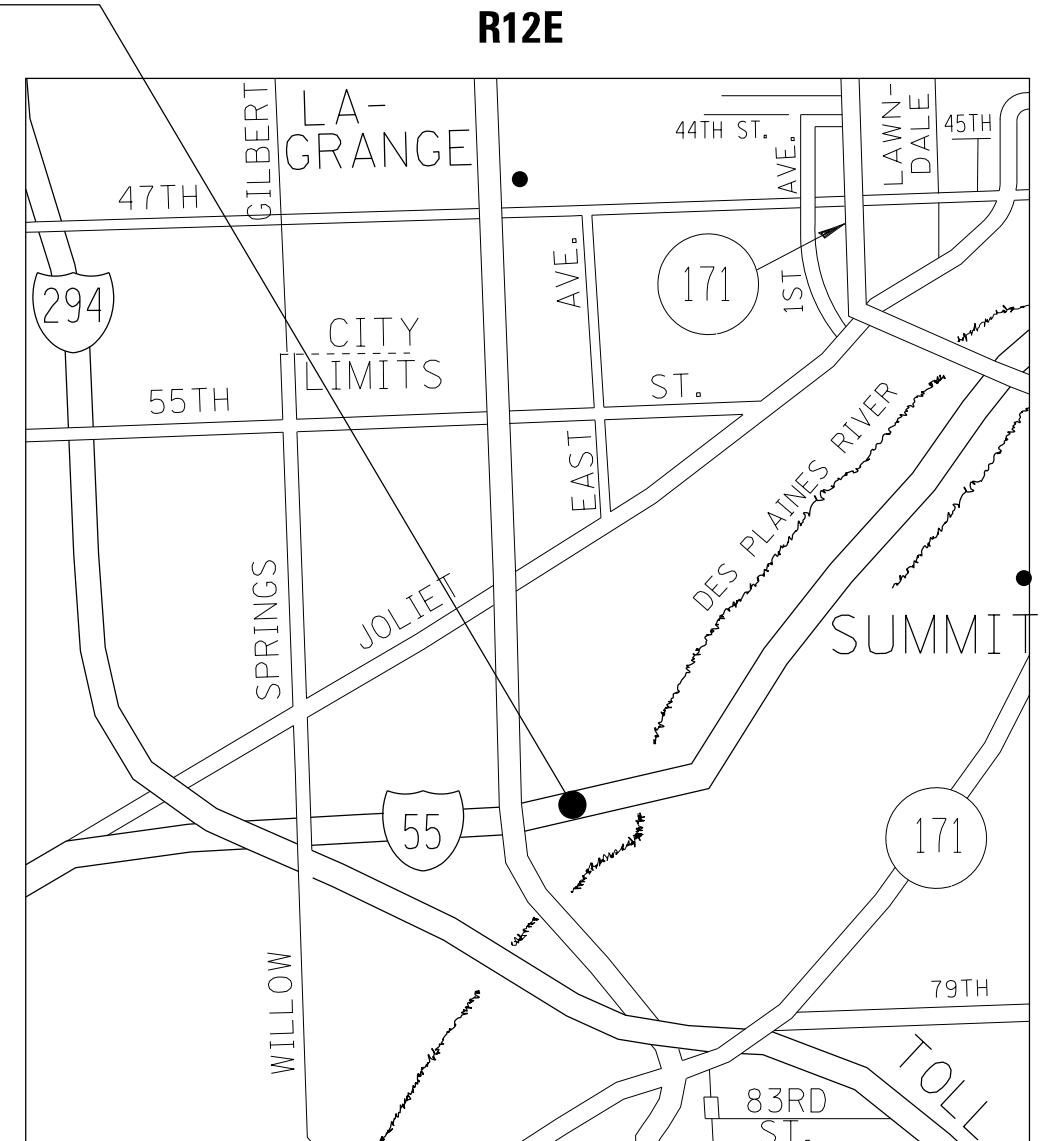
TRAFFIC DATA

LOCATION 2 (SN 016-0908)

127TH ST:
 2014 ADT = 27,300
 POSTED SPEED LIMIT = 30 MPH

LOCATION 3 (SN 016-0004 &
 SN 016-0005)
 I-55 EB AND WB OVER RR
 IN THE VILLAGE OF HODGKINS

LOCATION 2 (SN 016-0908)
 127TH ST OVER RR
 IN THE VILLAGE OF BLUE ISLAND



LYONS TOWNSHIPS

TRAFFIC DATA

LOCATION 3 (SN 016-0004 & 016-0005)

SN 016-0004
 I-55 STEVENSON EB:
 2014 ADT = 64,500
 POSTED SPEED LIMIT = 55 MPH

SN 016-0005
 I-55 STEVENSON WB:
 2014 ADT = 68,900
 POSTED SPEED LIMIT = 55 MPH

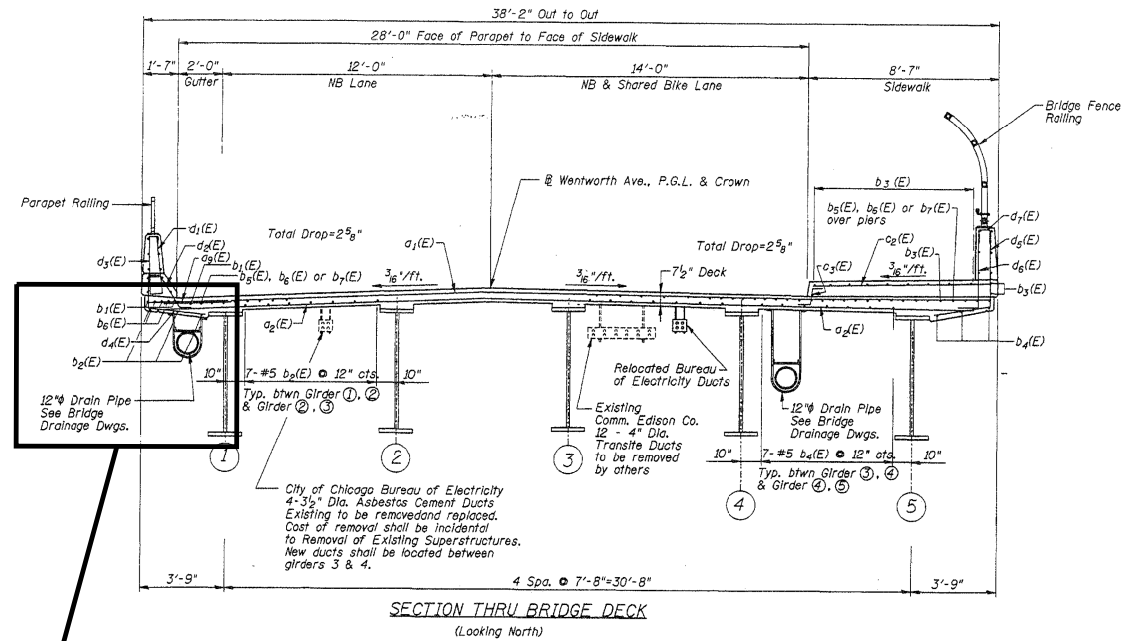
FILE NAME =	USER NAME = dahhr	DESIGNED -	REVISED -
p:\11\084EBIDINTEG\illinois.gov\PIDOT\Documents\DOT Offices\District 1\Projects\DI16816\Drawings\Design\DI16816-shr-Location Map		DRAWN -	REVISED -
Default	PLOT SCALE = 100.0000' / in.	CHECKED -	REVISED -
	PLOT DATE = 12/21/2015	DATE -	REVISED -

**STATE OF ILLINOIS
 DEPARTMENT OF TRANSPORTATION**

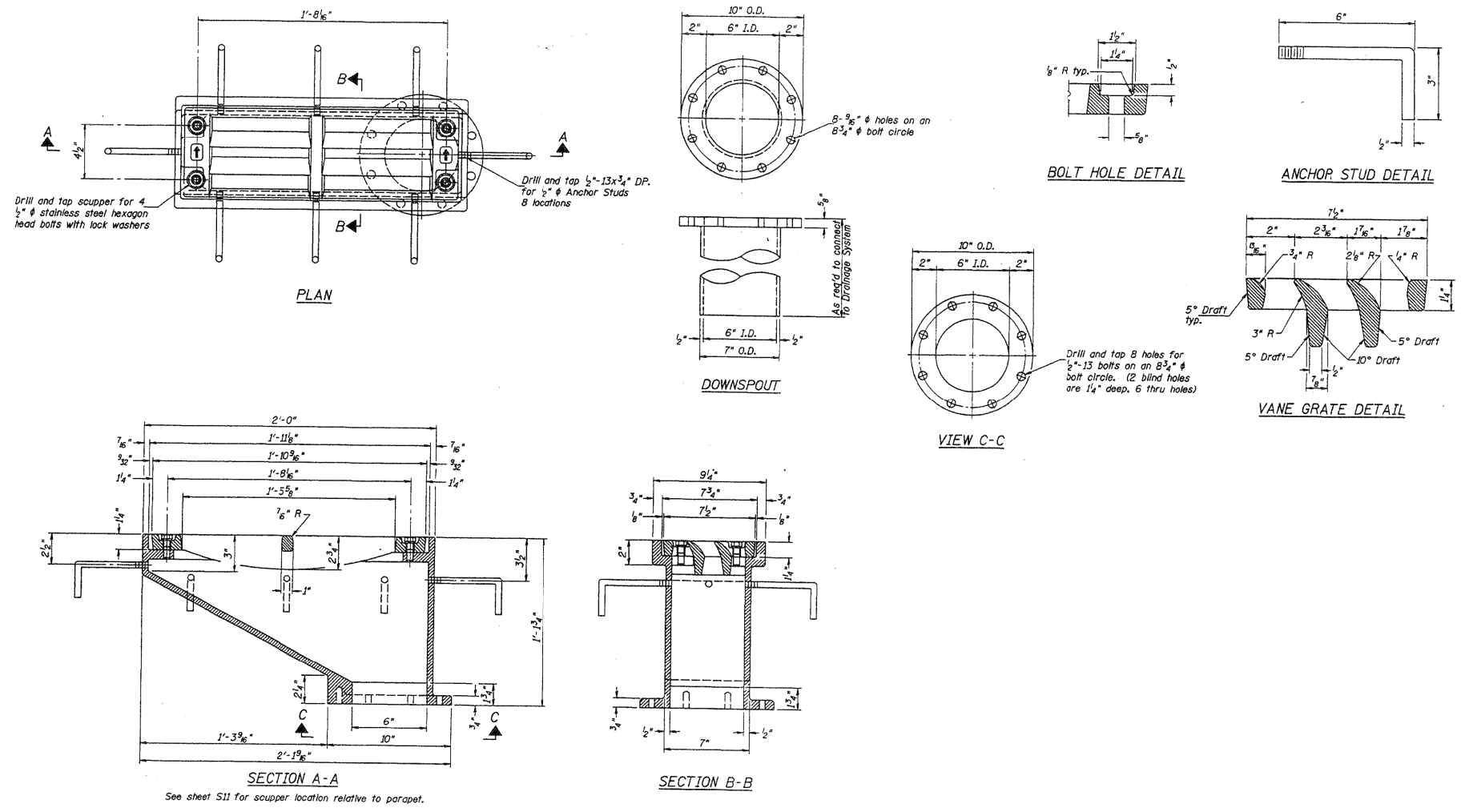
**LOCATION MAP
 LOCATIONS 2 AND 3**

SCALE: SHEET 2 OF 2 SHEETS STA. TO STA.

F.A. RTE.	SECTION	COUNTY	TOTAL SHEETS	SHEET NO.
VAR.	2015-084T	COOK	22	6
CONTRACT NO. 62B86				
ILLINOIS FED. AID PROJECT				



**REPLACE HORIZONTAL RUN FOR DRAINAGE PIPE
ALONG WEST BEAM
SEE PHOTOS 1, 2 AND 4 ON SHEET 5 OF 5 OF LOCATION
1 (SN 016-1007) SHEETS**



EXISTING DRAINAGE SCUPPER DS-12

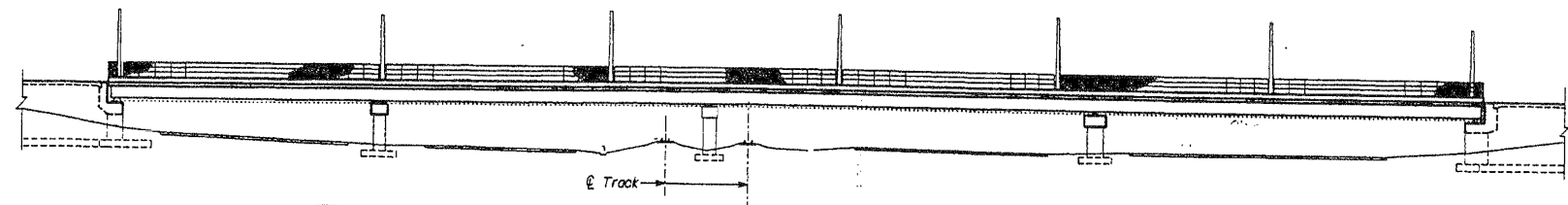
FILE NAME =	USER NAME = dahhnr	DESIGNED -	REVISED -
p:\1\084EBIDINTEG.illinois.gov\PIWIDOT\Documents\DOT Offices\District 1\Projects\016-1007\Drawings\Design\016816-sht-plan.dgn		DRAWN -	REVISED -
Default	PLOT SCALE = 100.0000' / in.	CHECKED -	REVISED -
	PLOT DATE = 12/21/2015	DATE -	REVISED -

**STATE OF ILLINOIS
DEPARTMENT OF TRANSPORTATION**

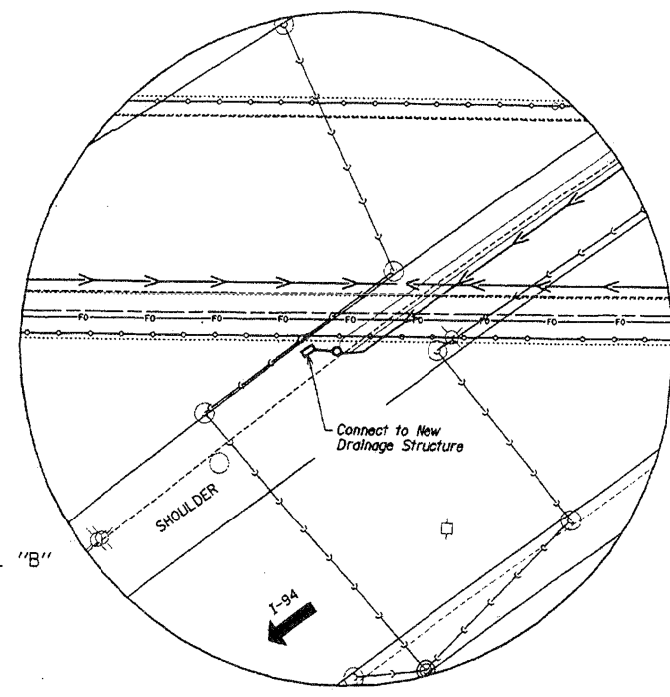
**LOCATION 1 (SN 016-1007)
CROSS SECTION AND SCUPPER DS-12 DETAILS**

SCALE: SHEET 2 OF 5 SHEETS STA. TO STA.

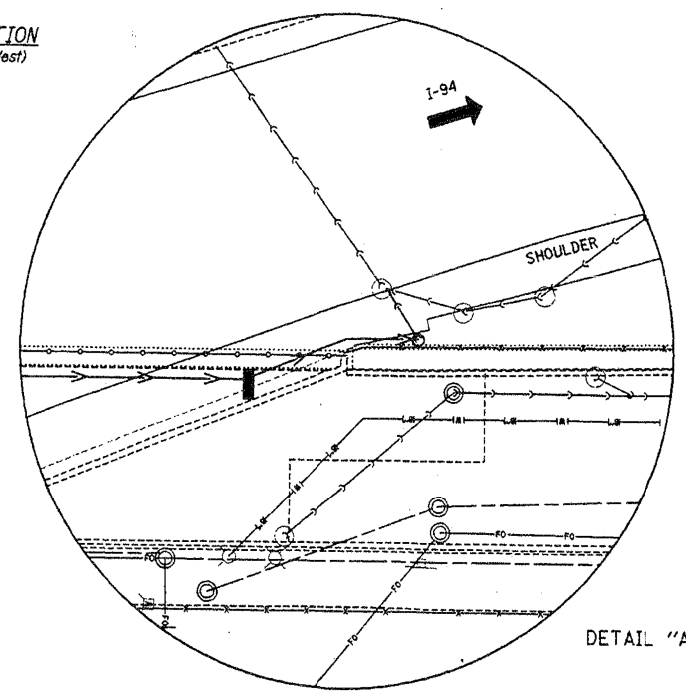
F.A. RTÉ.	SECTION	COUNTY	TOTAL SHEETS	SHEET NO.
VAR.	2015-084T	COOK	22	8
CONTRACT NO. 62B86				
ILLINOIS FED. AID PROJECT				



ELEVATION
(Looking West)



DETAIL "B"



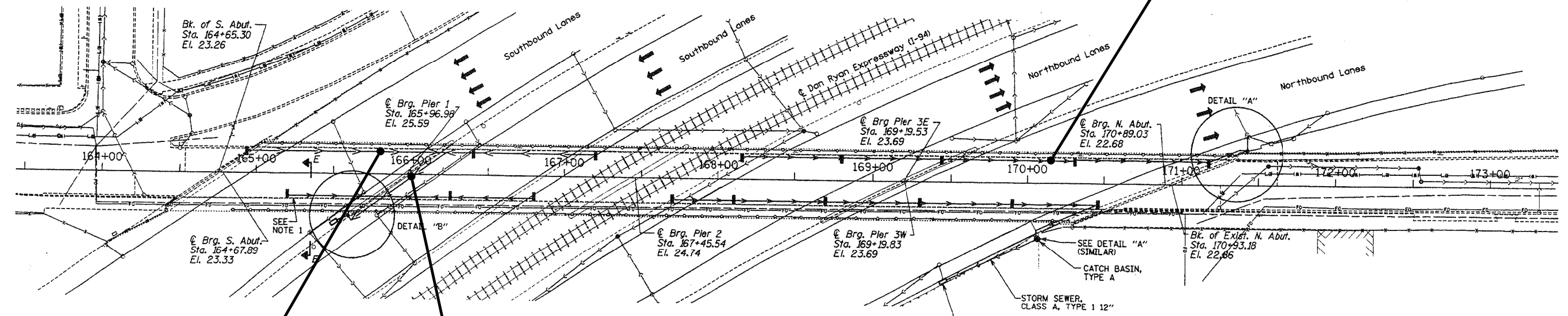
DETAIL "A"

BRIDGE DECK DRAINAGE LEGEND

- - DS-12 DRAINAGE SCUPPER WITH VANE GRATE (SEE NOTE 4)
- - 12" DIAMETER HORIZONTAL FIBERGLASS REINFORCED PIPE (ARROWS POINT IN DIRECTION OF FLOW)

NOTES:

1. PROVIDE BEND BELOW SCUPPERS (NORTHBOUND SIDE) TO ROUTE DRAINAGE PIPING CLOSER TO GIRDER #4 TO ALLOW PIPING TO PASS THROUGH CROSS FRAME X-BRACING WITHOUT INTERFERENCE.
2. WORK THIS SHEET WITH THE FOLLOWING SHEET.
3. PROVIDE CLEAN-OUT AT UPSTREAM END OF ALL HORIZONTAL 12" DIAMETER FIBERGLASS REINFORCED DRAINAGE PIPING.



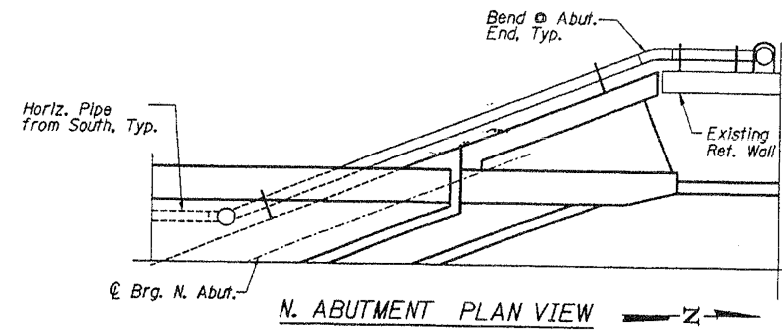
PLAN

REPLACE HORIZONTAL RUN FOR DRAINAGE PIPE ALONG WEST BEAM. MINIMUM SLOPE (0.5%)

REPLACE HORIZONTAL RUN FOR DRAINAGE PIPE ALONG WEST BEAM. MINIMUM SLOPE (0.5%)

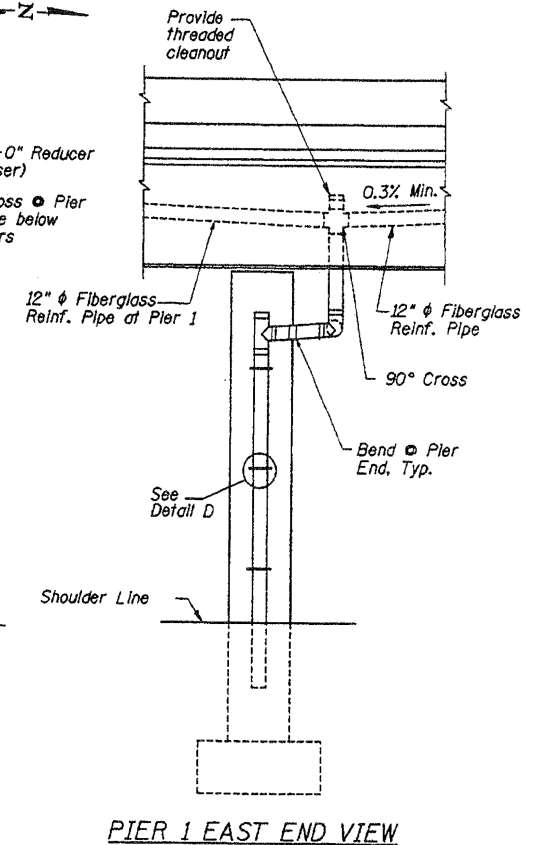
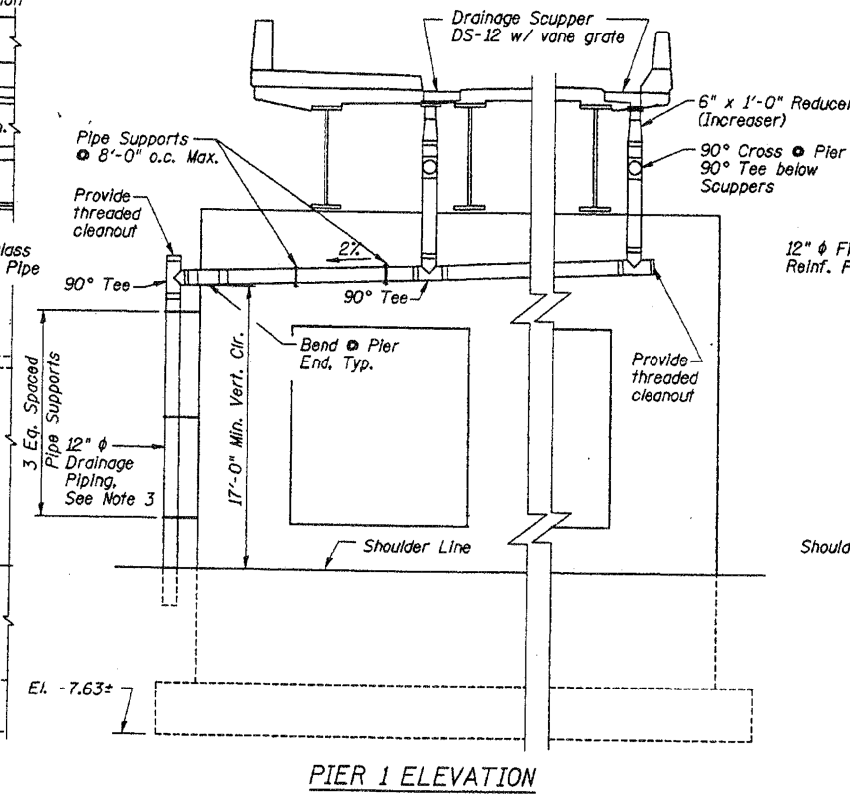
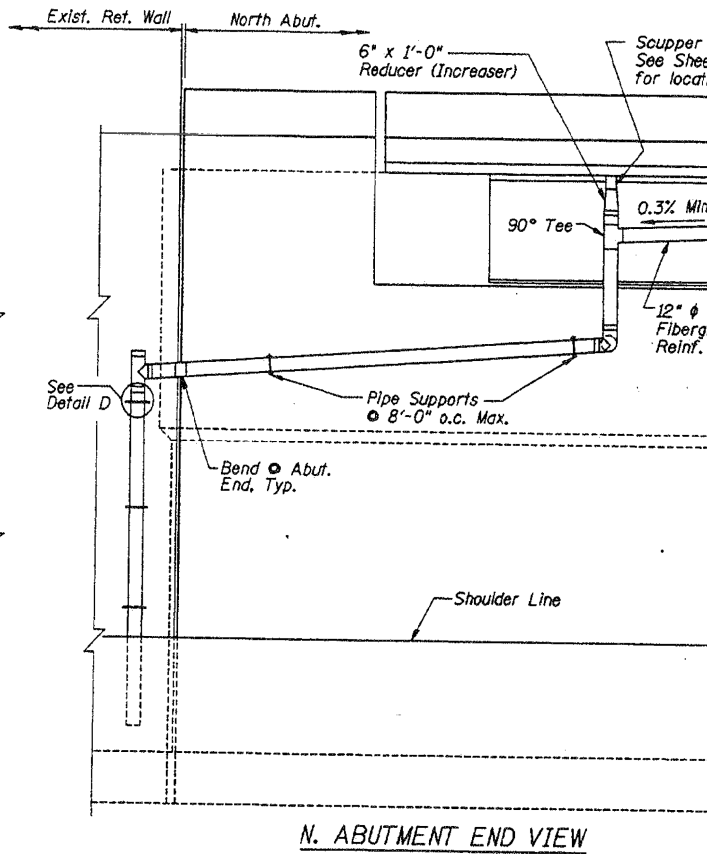
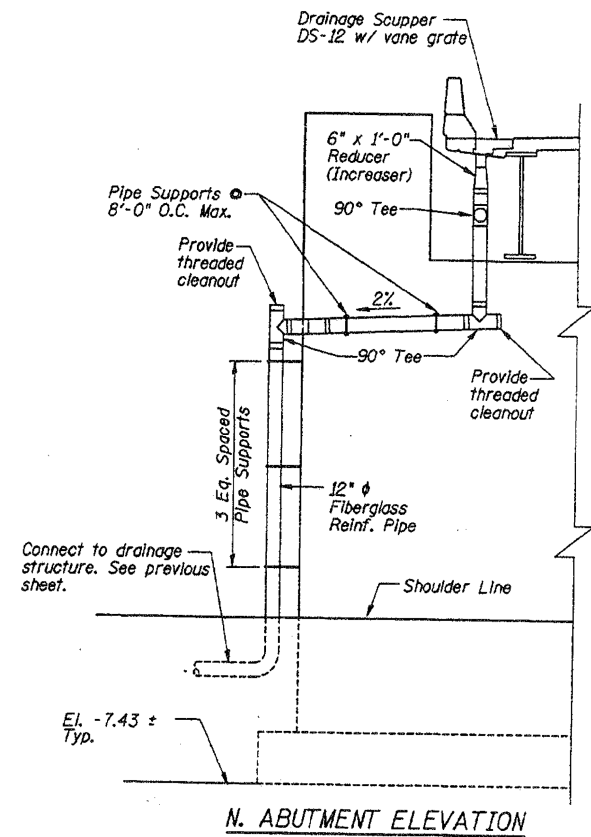
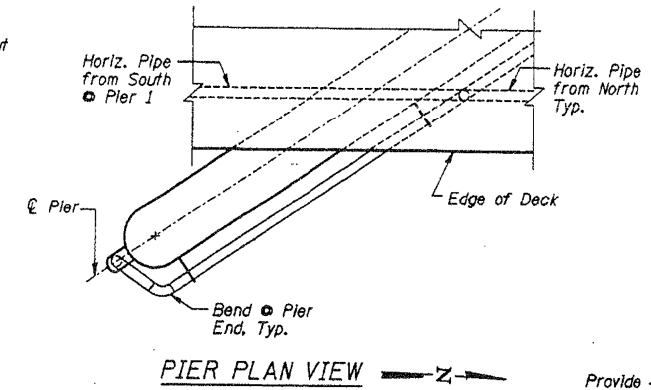
REPLACE MISSING SECTION FOR DRAINAGE PIPE ALONG NORTH FACE OF PIER 1

FILE NAME =	USER NAME = dahhr	DESIGNED -	REVISED -	STATE OF ILLINOIS DEPARTMENT OF TRANSPORTATION	LOCATION 1 (SN 016-1007) DRAINAGE DETAILS			F.A. RTE.	SECTION	COUNTY	TOTAL SHEETS	SHEET NO.
pw\11084EBIDINTEG.illinois.gov\PIWIDOT\Documents\DOT Offices\District 1\Projects\016-1007\Design\016-1007-shr-plan.dgn		CHECKED -	REVISED -		SCALE:	SHEET 3	OF 5 SHEETS	STA.	TO STA.	COOK	22	9
Default	PLOT DATE = 12/21/2015	DATE -	REVISED -					CONTRACT NO. 62B86			ILLINOIS FED. AID PROJECT	



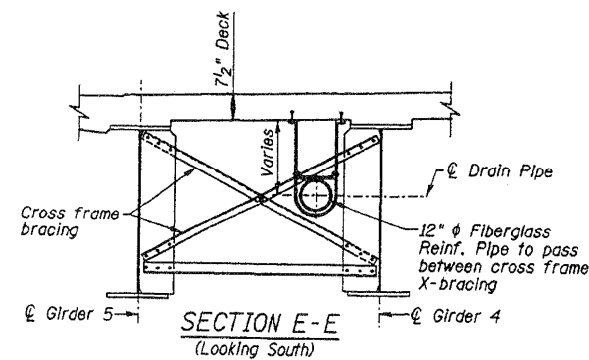
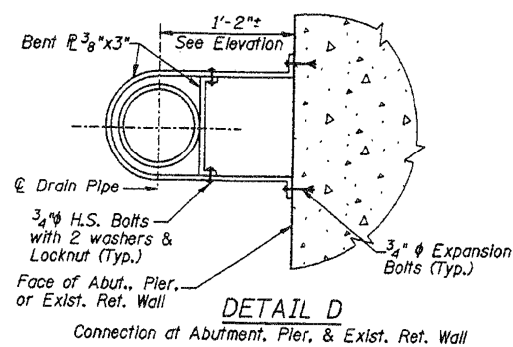
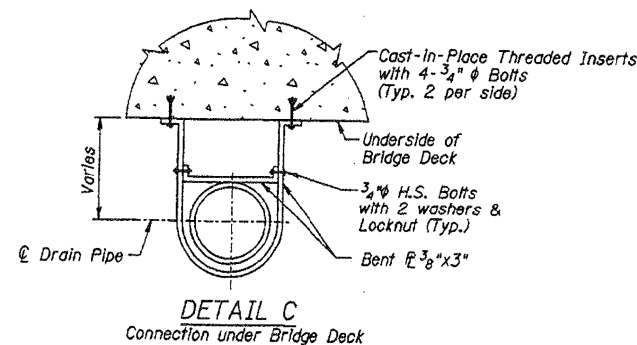
Notes:

1. Fiberglass reinforced pipe, ductile iron pipe, cleanouts, supports & fittings from the downspout to the drainage structure is included in the pay item - Drainage System.
2. All horizontal drainage piping attached to bridge at deck shall be 12" ϕ Fiberglass Reinf. Pipe braced as shown in Detail C at 8'-0" o.c. Max. and at all pipe couplings U.N.O. Min. slope of the pipe shall be 0.3%.
3. The bottom 10' of the exposed vertical drainage pipe shall be ductile iron pipe. Ductile iron pipe shall conform to ASTM A377 and ductile iron fittings (castings) shall conform to ASTM A536. The cost of the ductile iron pipe and supports shall be included in the lump sum price for Drainage System.



PIPING DETAILS (North Abut. West End)
PIPING DETAILS OPP. HAND, SIM. (North Abut. East End)

PIPING DETAILS



FOR INFORMATION ONLY

FILE NAME =	USER NAME = dahhr	DESIGNED -	REVISED -
pw\11084EBIDINTEG.illinois.gov\PIWIDOT\Documents\DOT Offices\District 1\Projects\DI16816\Drawings\Design\DI16816-shr-plan.dgn		REVISED -	REVISED -
Default	PLOT SCALE = 100.0000' / in.	CHECKED -	REVISED -
	PLOT DATE = 12/21/2015	DATE -	REVISED -

STATE OF ILLINOIS
DEPARTMENT OF TRANSPORTATION

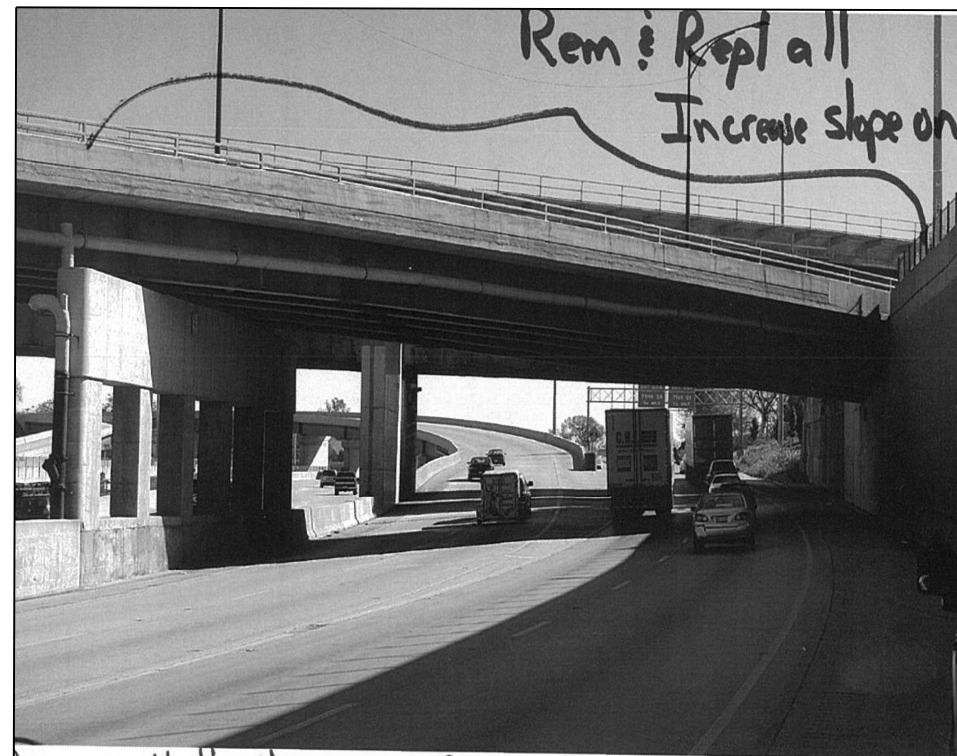
LOCATION 1 (SN 016-1007)
DRAINAGE DETAILS

SCALE: SHEET 4 OF 5 SHEETS STA. TO STA.

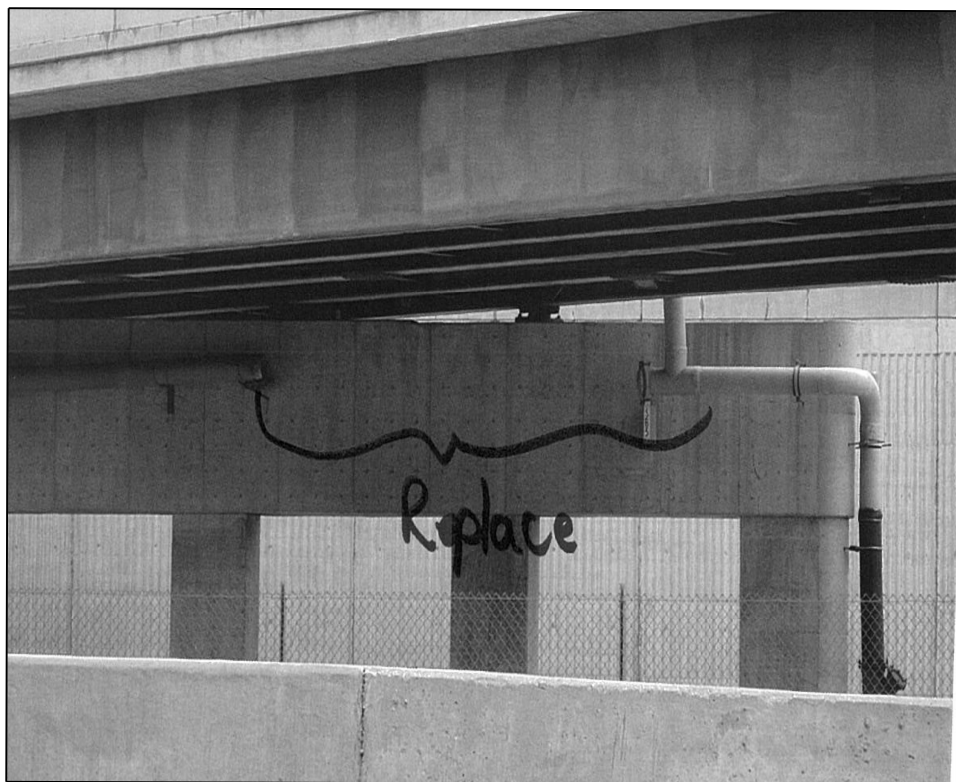
F.A. RTE.	SECTION	COUNTY	TOTAL SHEETS	SHEET NO.
VAR.	2015-084T	COOK	22	10
CONTRACT NO. 62B86				
ILLINOIS FED. AID PROJECT				



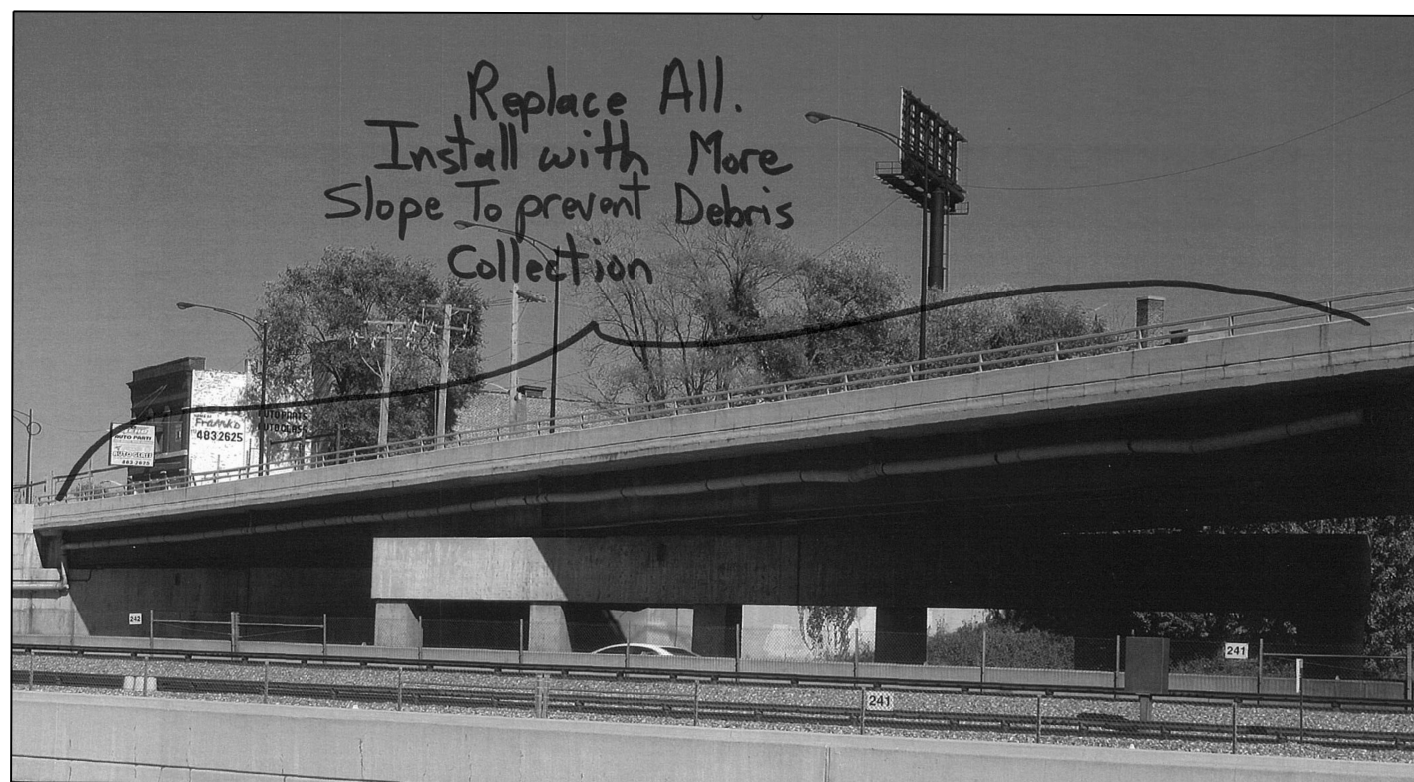
016-1007 PHOTO #1
SECTION OVER DAN RYAN SB EXPRESS LANES _ LOOKING EAST



016-1007 PHOTO #2
SECTION OVER DAN RYAN SB LOCAL LANES _ LOOKING EAST



016-1007 PHOTO #3
PIER 1 _ NORTH FACE



016-1007 PHOTO #4
SECTION OVER DAN RYAN NB LANES _ LOOKING EAST

FILE NAME =	USER NAME = dahhr	DESIGNED -	REVISED -
p:\11\084EBID\INTEG\illinois.gov\PWIDOT\Documents\IDOT Offices\District 1\Projects\016-1007\Drawings\Design\016-1007-sh1-plan.dgn		DRAWN -	REVISED -
Default	PLOT SCALE = 100.0000' / 1in.	CHECKED -	REVISED -
	PLOT DATE = 12/21/2015	DATE -	REVISED -

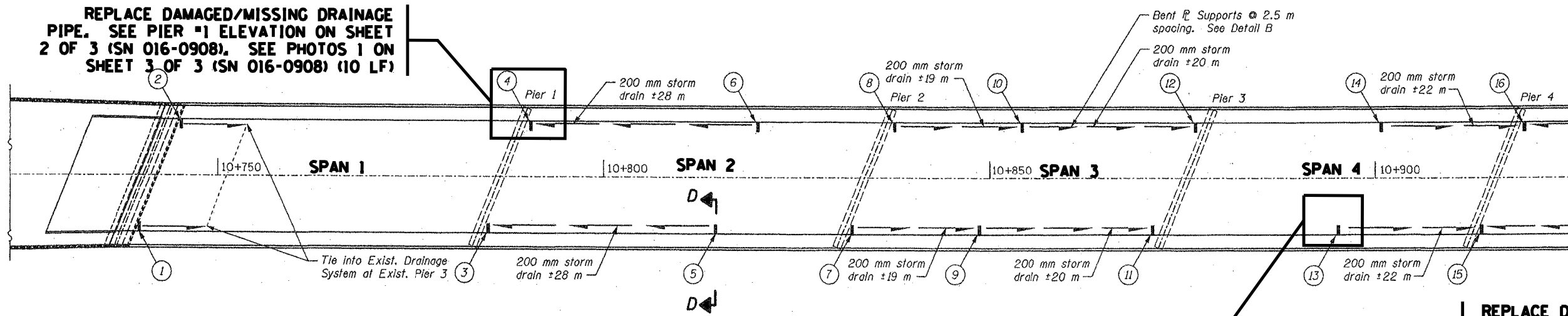
STATE OF ILLINOIS
DEPARTMENT OF TRANSPORTATION

LOCATION 1 (SN 016-1007)
DETAILS

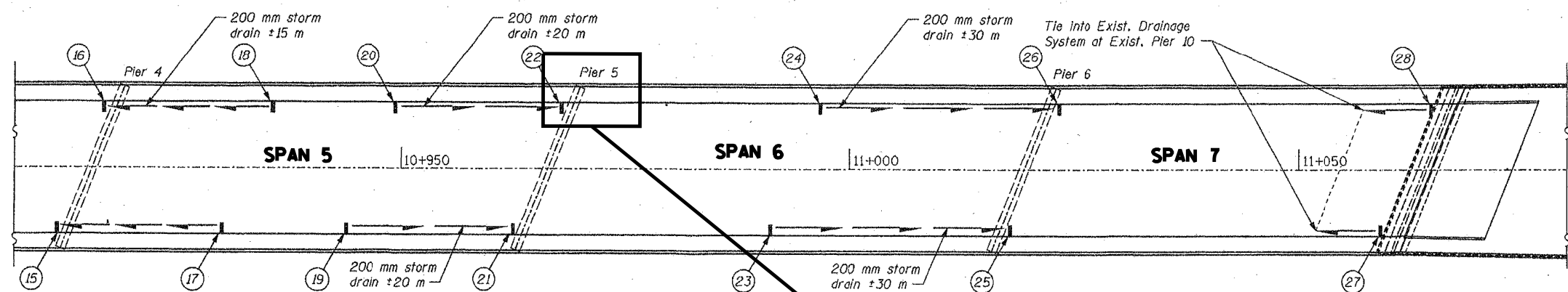
SCALE: SHEET 5 OF 5 SHEETS STA. TO STA.

F.A. RTE.	SECTION	COUNTY	TOTAL SHEETS	SHEET NO.
VAR.	2015-084T	COOK	22	11
CONTRACT NO. 62B86			ILLINOIS FED. AID PROJECT	

REPLACE DAMAGED/MISSING DRAINAGE PIPE. SEE PIER #1 ELEVATION ON SHEET 2 OF 3 (SN 016-0908). SEE PHOTOS 1 ON SHEET 3 OF 3 (SN 016-0908) (10 LF)

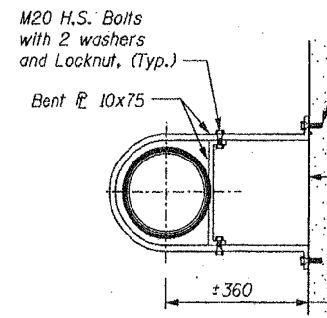


REPLACE DAMAGED/MISSING DRAINAGE PIPE. SEE SECTION D-D THIS SHEET. SEE PHOTO 2 ON SHEET 3 OF 3 (SN 016-0908) (5 LF)

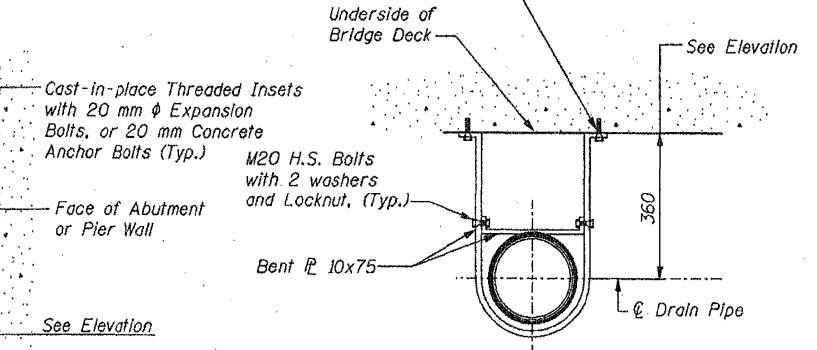


REPLACE DAMAGED/MISSING DRAINAGE PIPE. SEE PIER #5 ELEVATION ON SHEET 2 OF 3 (SN 016-0908). SEE PHOTO 3 ON SHEET 3 OF 3 (SN 016-0908) (10 LF)

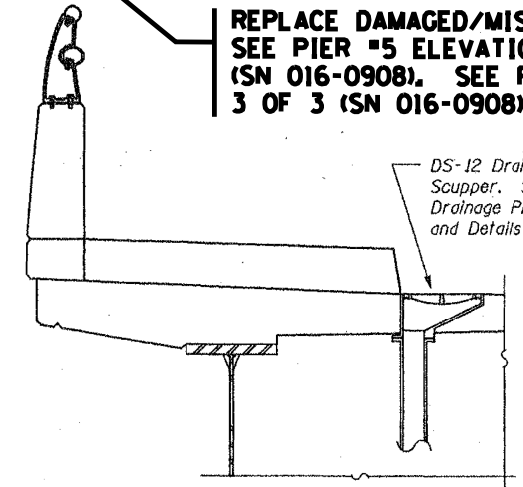
Scupper Number	Station	Offset	Type
1	10+740 RT	7.2 m	DS 12
2	10+745 LT	7.2 m	DS 12
3	10+786 RT	7.2 m	DS 12
4	10+791 LT	7.2 m	DS 12
5	10+814 RT	7.2 m	DS 12
6	10+819 LT	7.2 m	DS 12
7	10+832 RT	7.2 m	DS 12
8	10+837 LT	7.2 m	DS 12
9	10+851 RT	7.2 m	DS 12
10	10+856 LT	7.2 m	DS 12
11	10+871 RT	7.2 m	DS 12
12	10+876 LT	7.2 m	DS 12
13	10+893 RT	7.2 m	DS 12
14	10+898 LT	7.2 m	DS 12
15	10+914.5 RT	7.2 m	DS 12
16	10+919.5 LT	7.2 m	DS 12
17	10+930 RT	7.2 m	DS 12
18	10+935 LT	7.2 m	DS 12
19	10+943 RT	7.2 m	DS 12
20	10+948 LT	7.2 m	DS 12
21	10+962.5 RT	7.2 m	DS 12
22	10+967.5 LT	7.2 m	DS 12
23	10+988 RT	7.2 m	DS 12
24	10+993 LT	7.2 m	DS 12
25	11+017.5 RT	7.2 m	DS 12
26	11+022.5 LT	7.2 m	DS 12
27	11+059 RT	7.2 m	DS 12
28	11+064 LT	7.2 m	DS 12



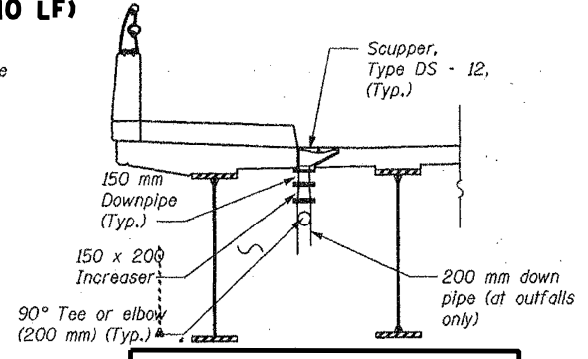
DETAIL A
Connection at Abutment and Pier



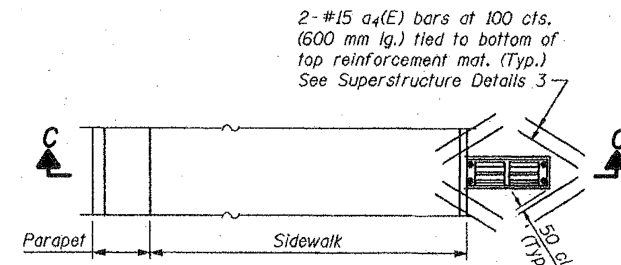
DETAIL B
Connection Under Bridge Deck



SECTION C-C



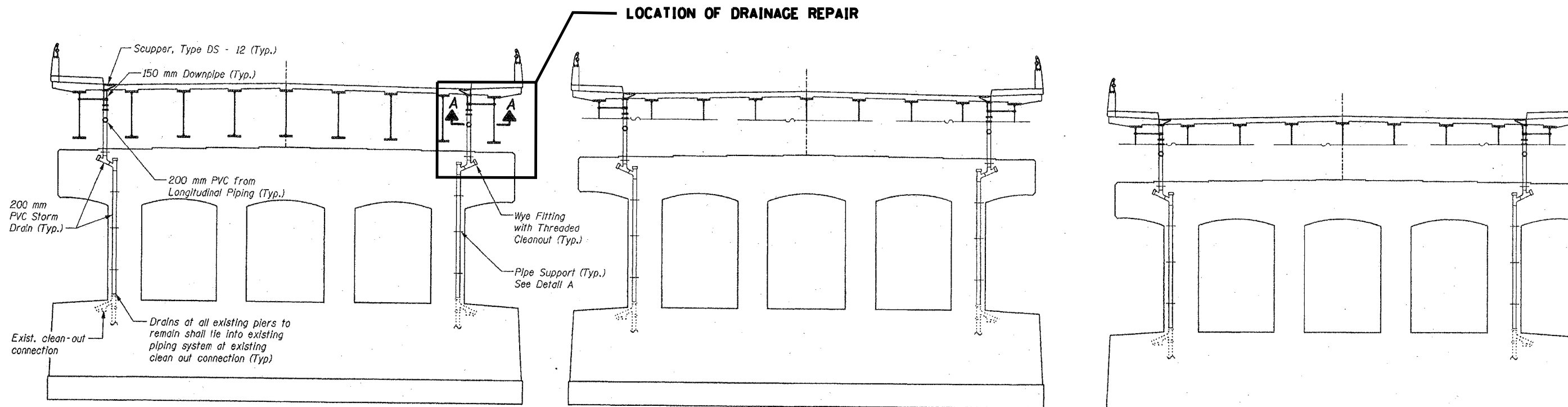
SECTION D-D
Typical near all intermediate scuppers



PLAN AT SIDEWALK

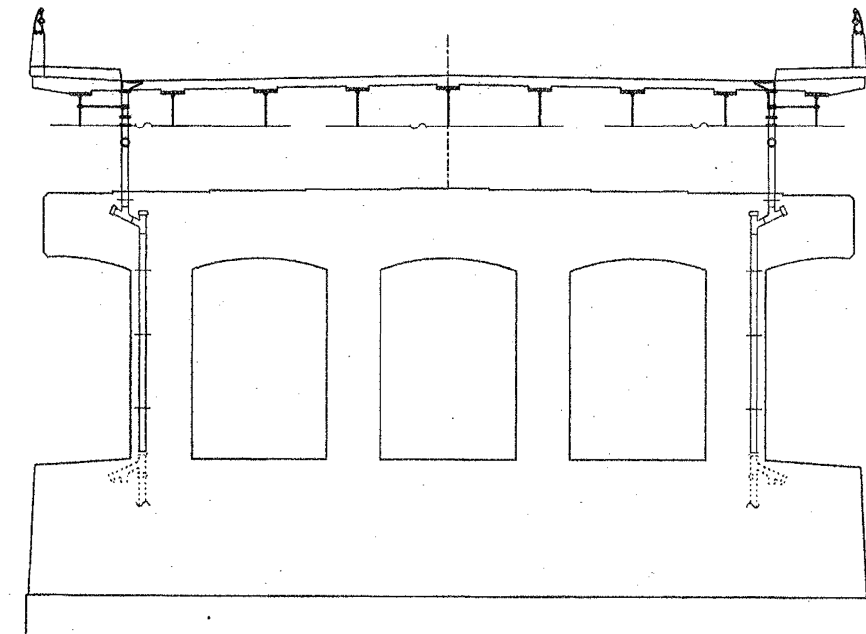
BILL OF MATERIAL (S.N. 016-0908)
127TH ST OVER RR

ITEM	UNIT	QUANTITY
BRIDGE DRAINAGE SYSTEM REPAIRS	FOOT	25

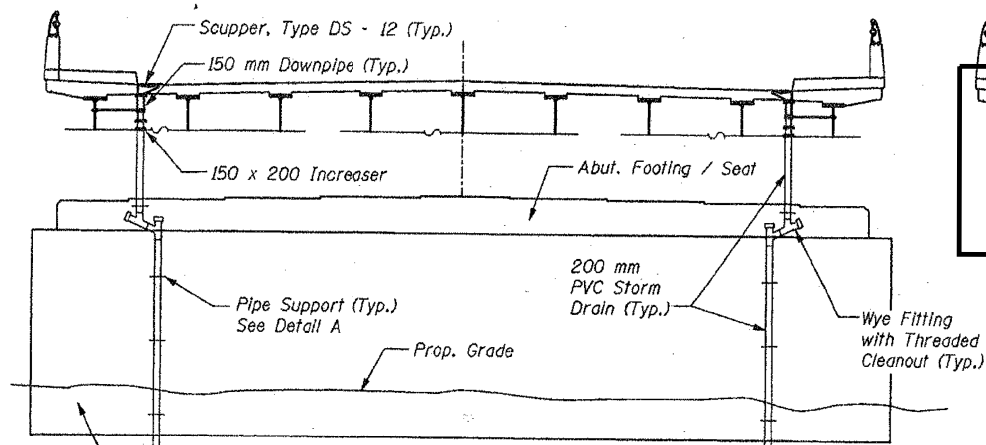


PIER #1 - Looking West

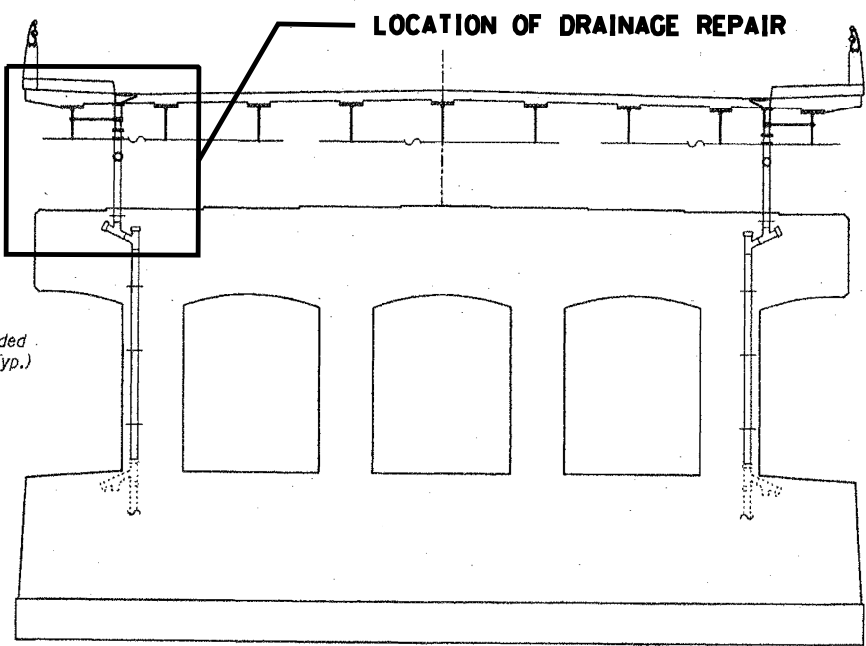
PIER #3 - Looking East



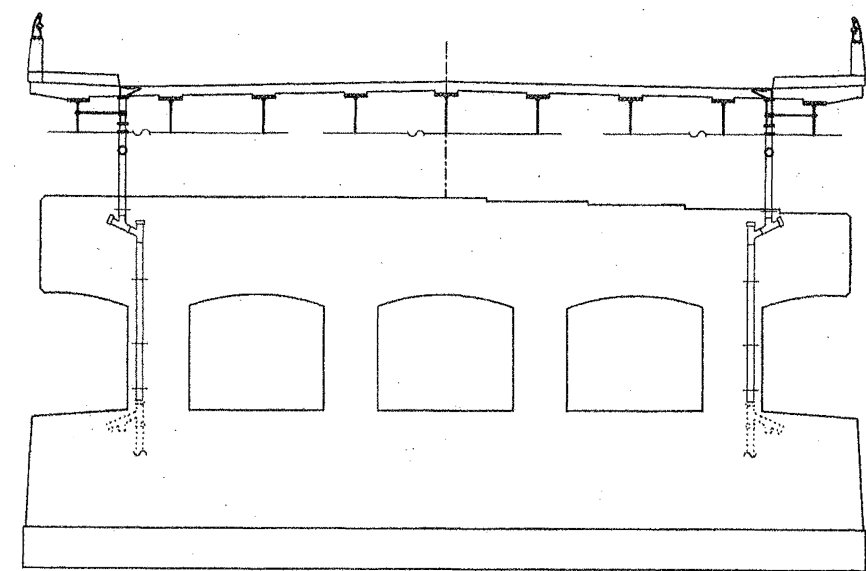
PIER #4 - Looking West



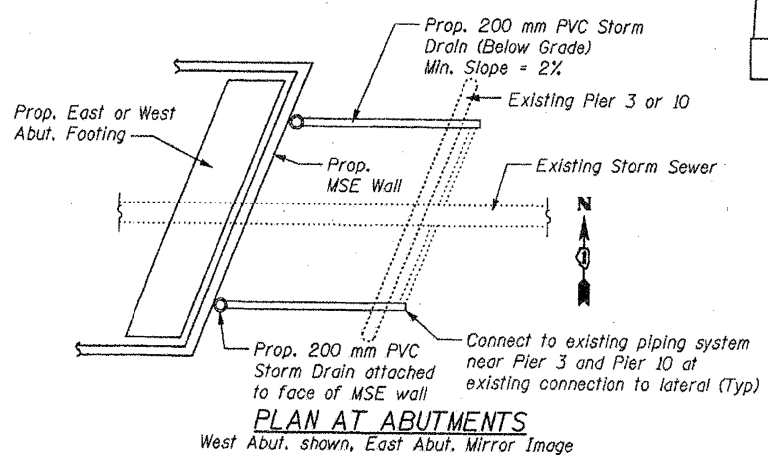
WEST ABUTMENT - Looking West
EAST ABUTMENT - Mirror Image



PIER #5 - Looking East

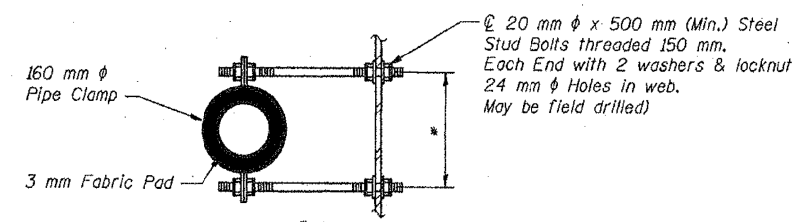


PIER #6 - Looking West



PLAN AT ABUTMENTS

West Abut. shown, East Abut. Mirror Image



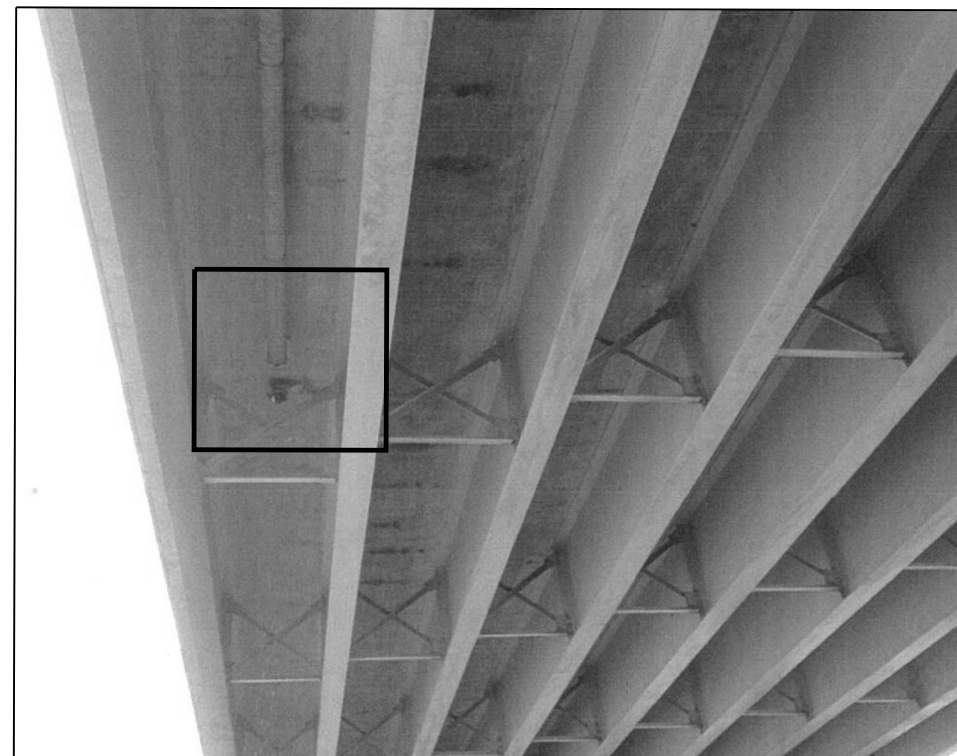
* Dimension as required by Pipe Clamp

SECTION A-A

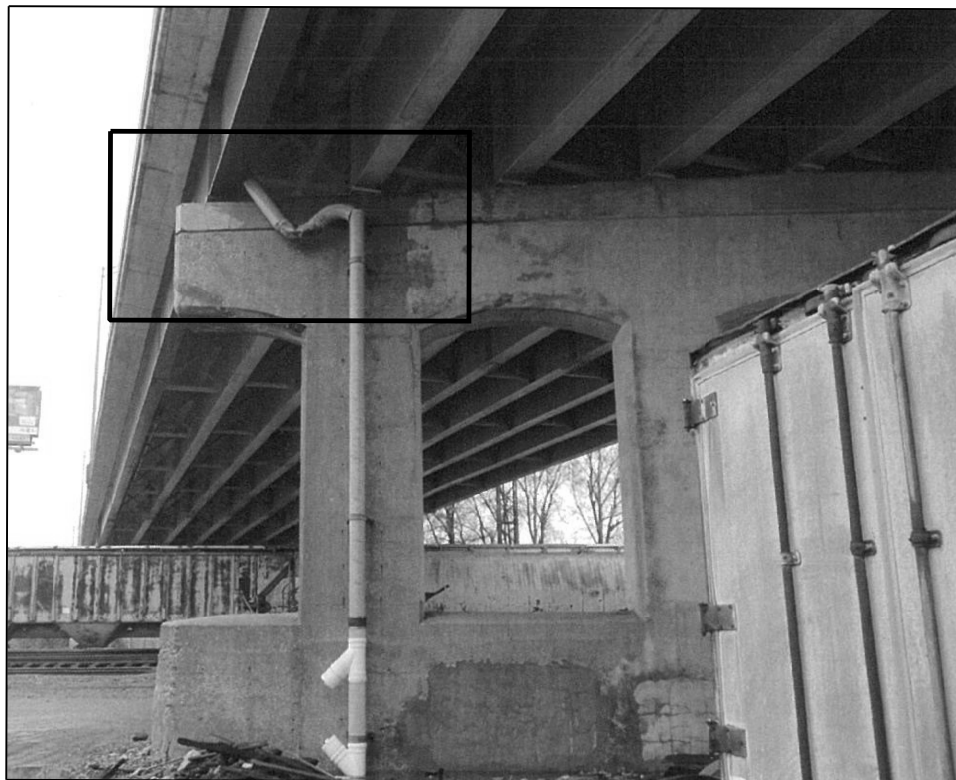
FILE NAME =	USER NAME = dahhr	DESIGNED -	REVISED -	STATE OF ILLINOIS DEPARTMENT OF TRANSPORTATION	LOCATION 2 (SN 016-0908) DRAINAGE DETAILS			F.A. RTÉ.	SECTION	COUNTY	TOTAL SHEETS	SHEET NO.
pw\11084EBIDINTEG.illinois.gov\PIWIDOT\Documents\DOT Offices\District 1\Projects\DI16816\Drawings\Design\DI16816-sht-plan.dgn		CHECKED -	REVISED -					VAR.	2015-084T	COOK	22	13
Default	PLOT SCALE = 100.0000' / in.	DATE -	REVISED -					CONTRACT NO. 62B86			ILLINOIS FED. AID PROJECT	
	PLOT DATE = 12/21/2015							SCALE:	SHEET 2	OF 3 SHEETS	STA.	TO STA.



016-0908 PHOTO #1
PIER 1 _ EAST FACE
NORTH END



016-0908 PHOTO #2
SPAN 4 _ SOUTH BAY



016-0908 PHOTO #3
PIER 5 _ WEST FACE
NORTH END

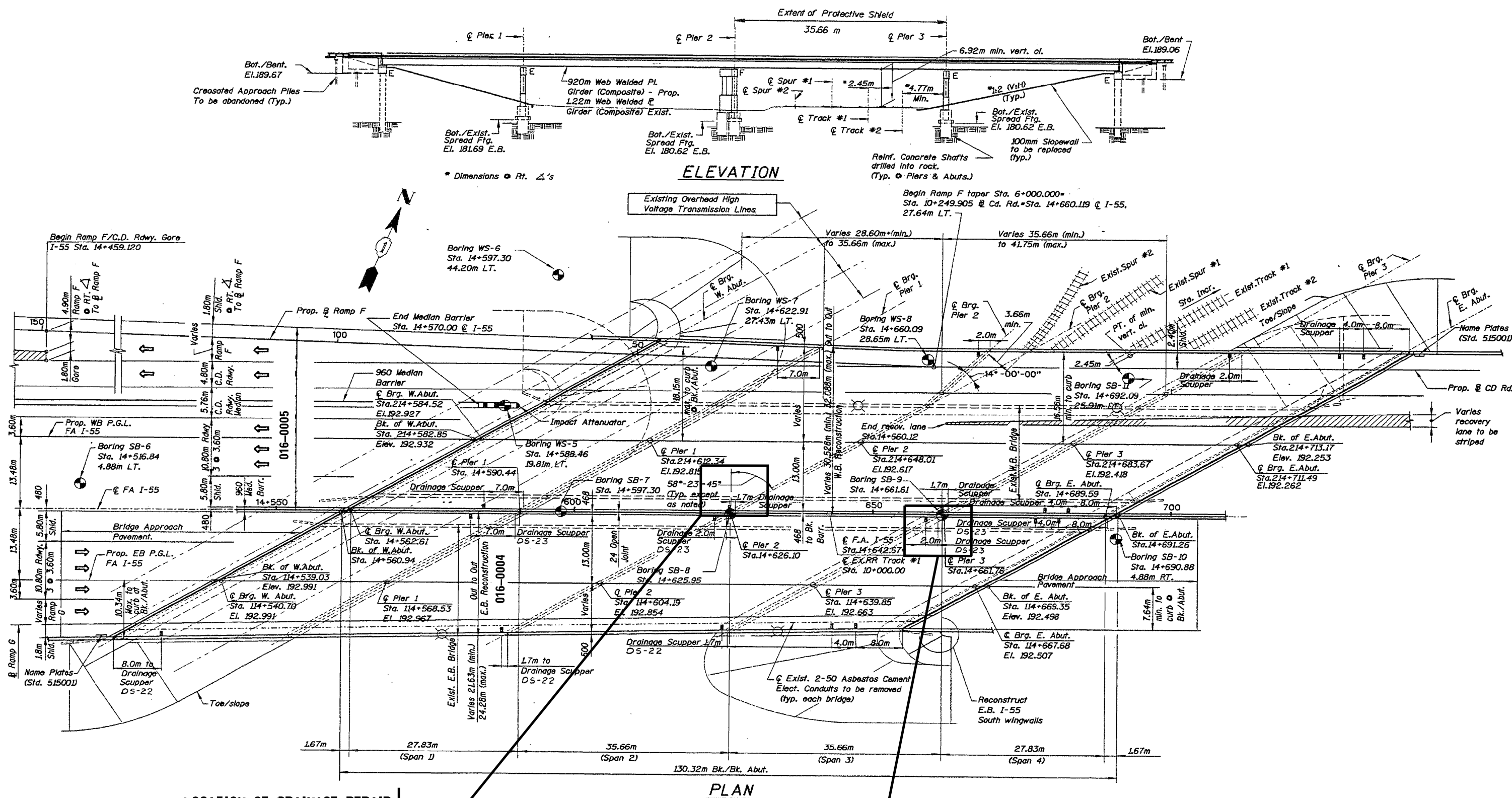
FILE NAME =	USER NAME = dahhr	DESIGNED -	REVISED -
p:\11084EBID\INTEG\illinois.gov\PIWIDOT\Documents\IDOT Offices\District 1\Projects\DI16816\Drawings\Design\DI16816-shr-plan.dgn		CHECKED -	REVISED -
Default	PLOT SCALE = 100.0000' / in.	DATE -	REVISED -
	PLOT DATE = 12/21/2015		

STATE OF ILLINOIS
DEPARTMENT OF TRANSPORTATION

LOCATION 2 (SN 016-0908)
DETAILS

SCALE: SHEET 3 OF 3 SHEETS STA. TO STA.

F.A. RTE.	SECTION	COUNTY	TOTAL SHEETS	SHEET NO.
VAR.	2015-084T	COOK	22	14
ILLINOIS FED. AID PROJECT			CONTRACT NO. 62B86	

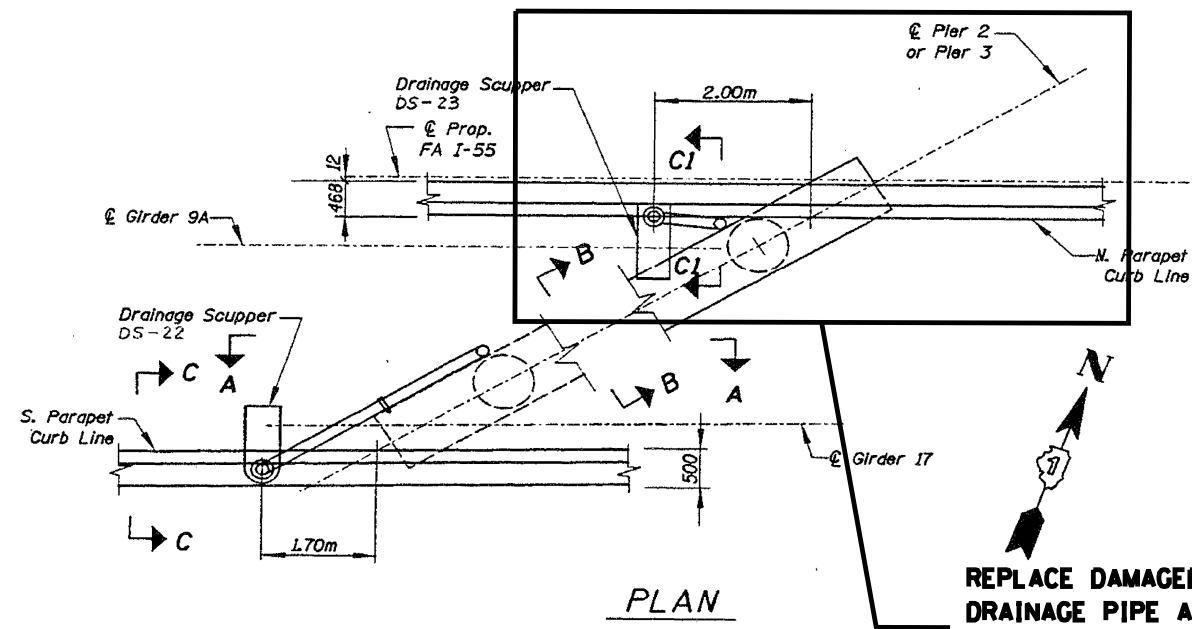


LOCATION OF DRAINAGE REPAIR
SEE SHEET 3 OF 4 (SN 016-0005)

LOCATION OF DRAINAGE REPAIR
SEE SHEET 2 OF 4 (SN 016-0004)

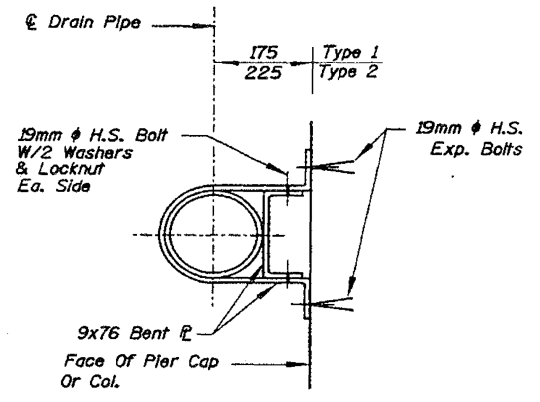
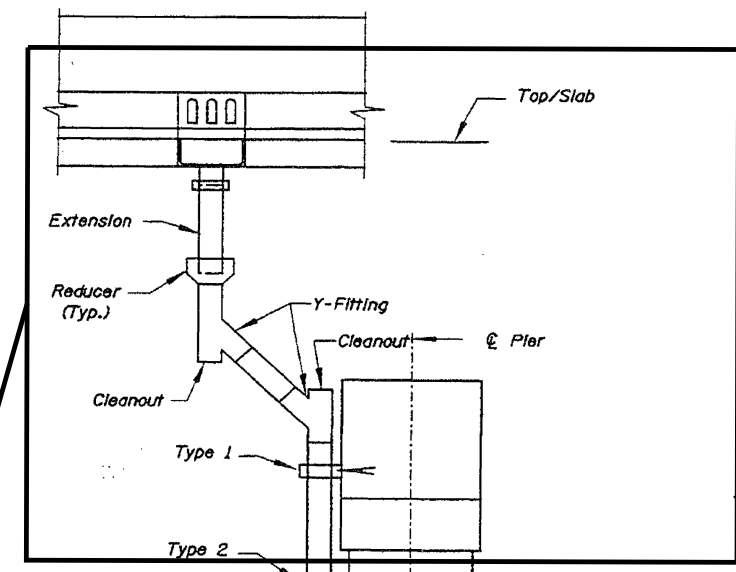
BILL OF MATERIAL (S.N. 016-0004 AND 016-0005)
I-55 OVER RR

ITEM	UNIT	QUANTITY
BRIDGE DRAINAGE SYSTEM REPAIRS	FOOT	10

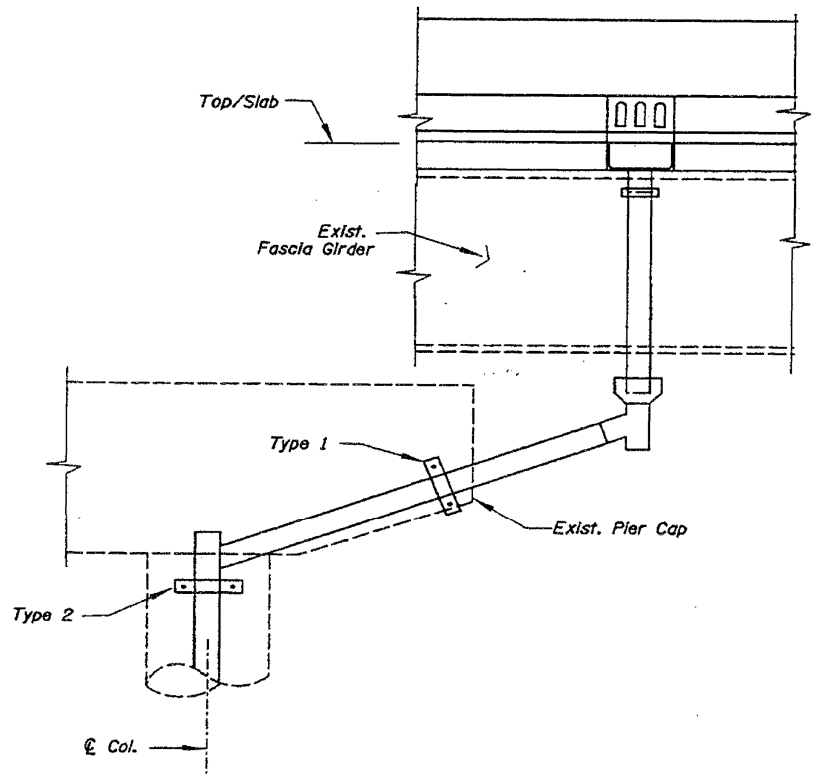


PLAN

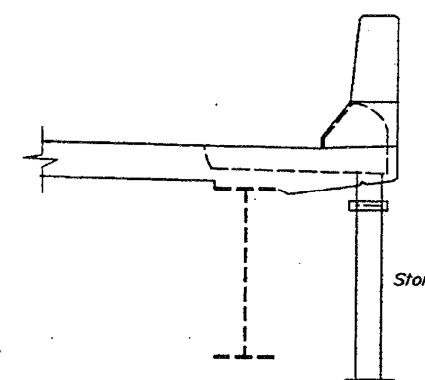
REPLACE DAMAGED/MISSING DRAINAGE PIPE AT PIER 3. SEE PHOTO 2 ON SHEET 4 OF 4 (SN 016-004 AND 016-0005) (5 LF)



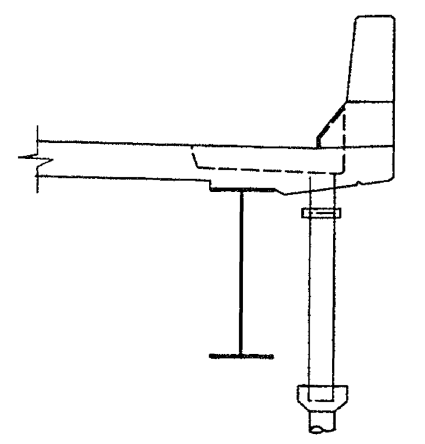
PLAN-DETAIL D
Pipe Support on Pier Cap & Pier Col. See Sections.



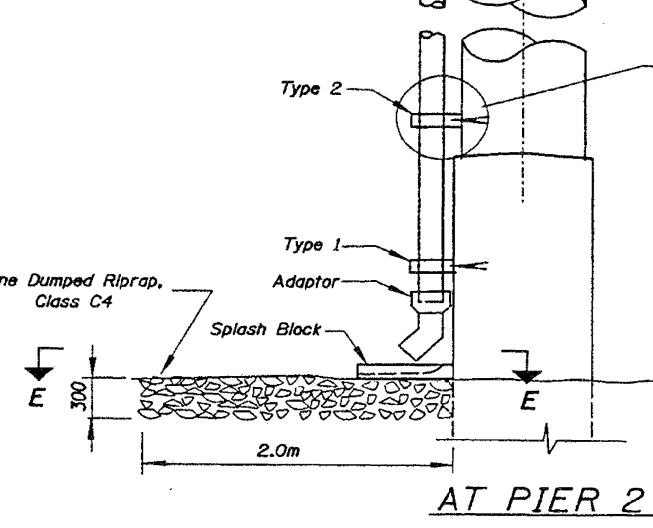
SECTION A-A



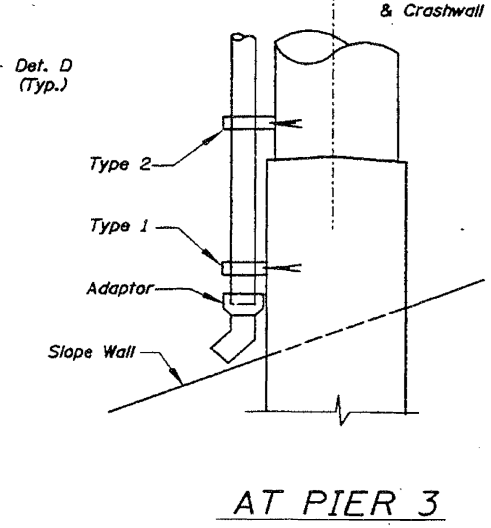
SECTION C-C



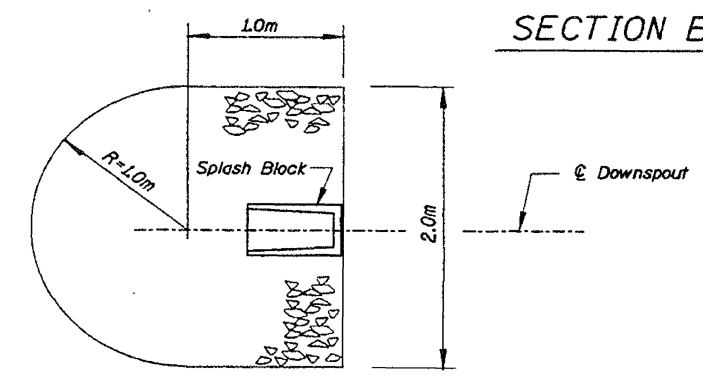
SECTION C1-C1



AT PIER 2



AT PIER 3



SECTION E-E
Limits of Stone Dumped Riprap, Class C4.

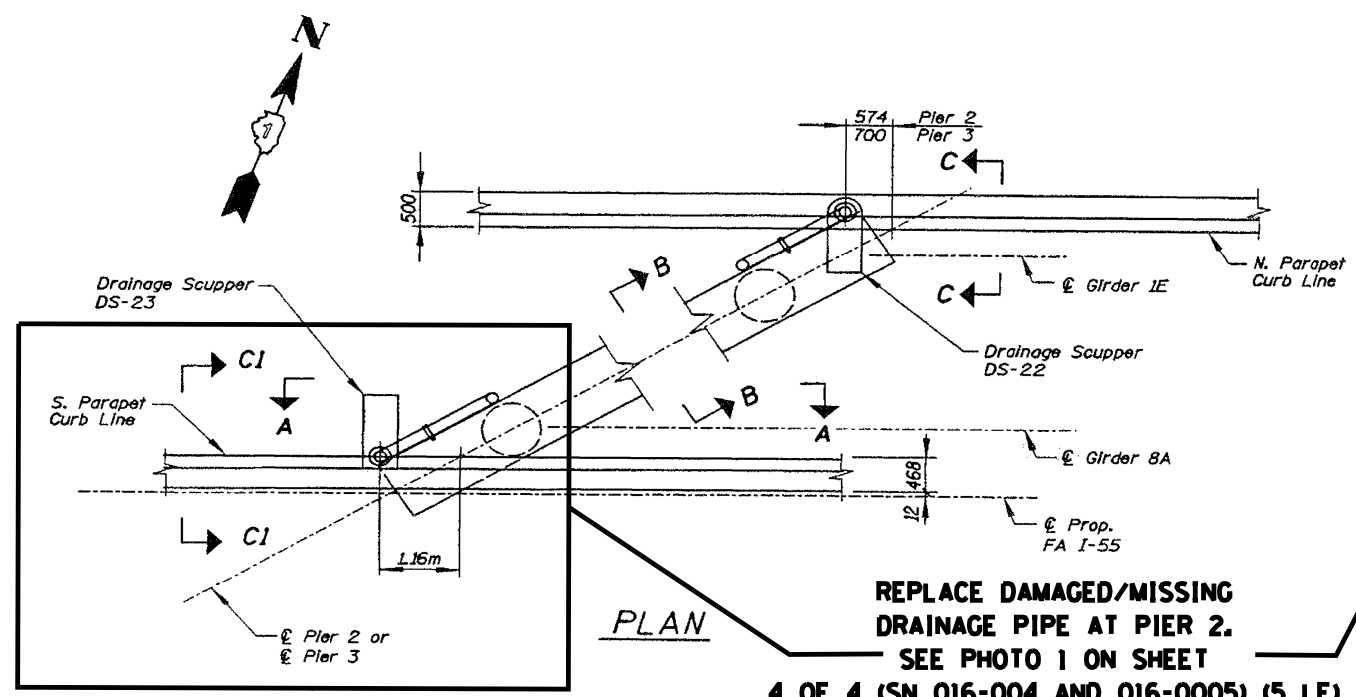
FILE NAME =	USER NAME = dahhnr	DESIGNED -	REVISED -
p:\1\084EBIDINTEG\illinois.gov\PIWIDOT\Documents\DOT Offices\District 1\Projects\016\Drawings\Design\016816-sht-plan.dgn		DRAWN -	REVISED -
Default	PLOT SCALE = 100.0000' / 1in.	CHECKED -	REVISED -
	PLOT DATE = 12/21/2015	DATE -	REVISED -

STATE OF ILLINOIS
DEPARTMENT OF TRANSPORTATION

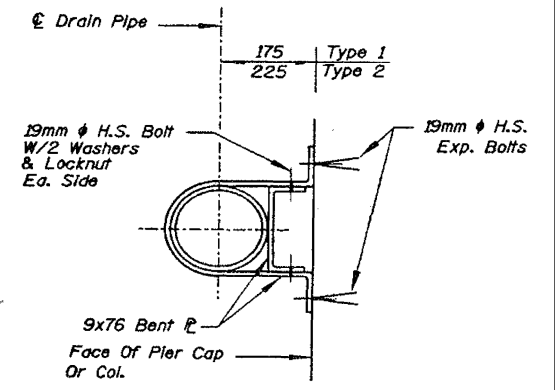
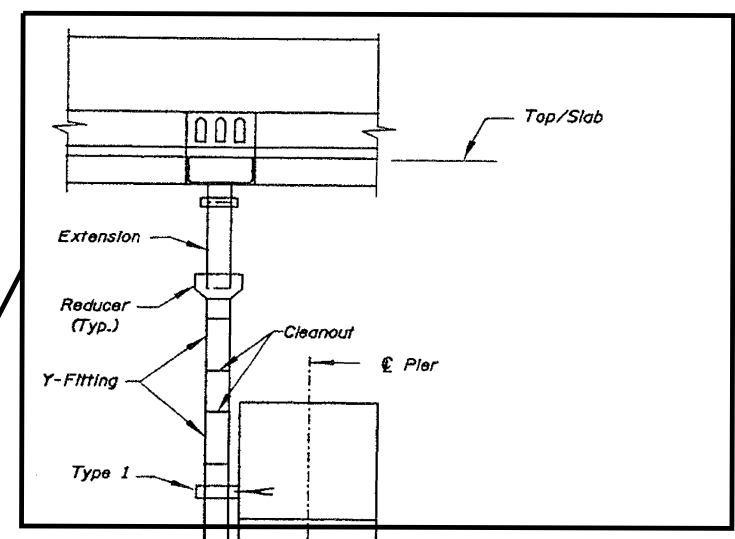
LOCATION 3 (EB SN 016-0004)
DRAINAGE DETAILS

SCALE: SHEET 2 OF 4 SHEETS STA. TO STA.

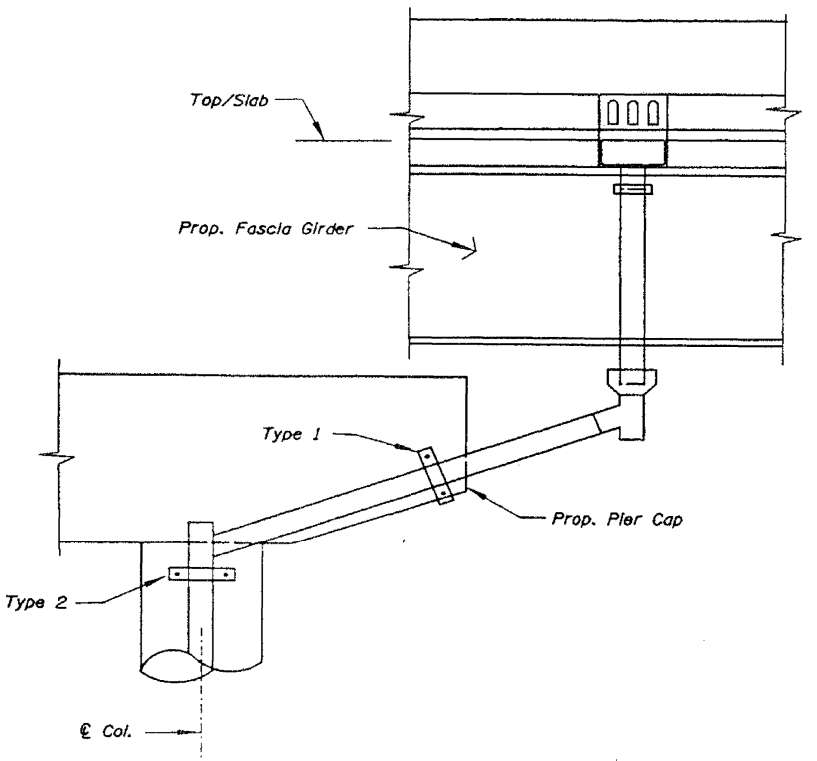
F.A. RTE.	SECTION	COUNTY	TOTAL SHEETS	SHEET NO.
VAR.	2015-084T	COOK	22	16
CONTRACT NO. 62B86				
ILLINOIS FED. AID PROJECT				



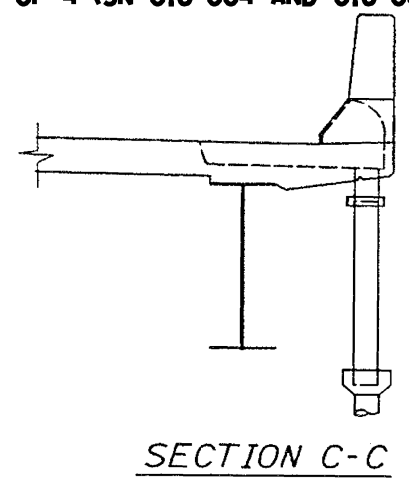
REPLACE DAMAGED/MISSING DRAINAGE PIPE AT PIER 2.
SEE PHOTO 1 ON SHEET
4 OF 4 (SN 016-004 AND 016-0005) (5 LF)



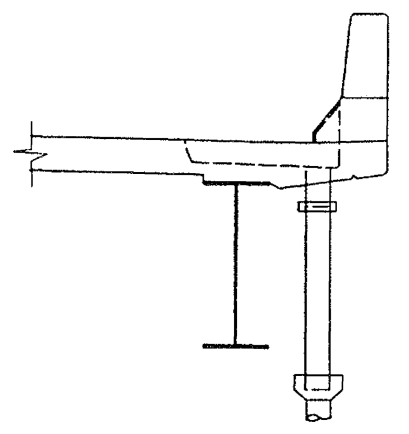
PLAN-DETAIL D
 Pipe Support • Pier Cap & Pier Col. See Sections.



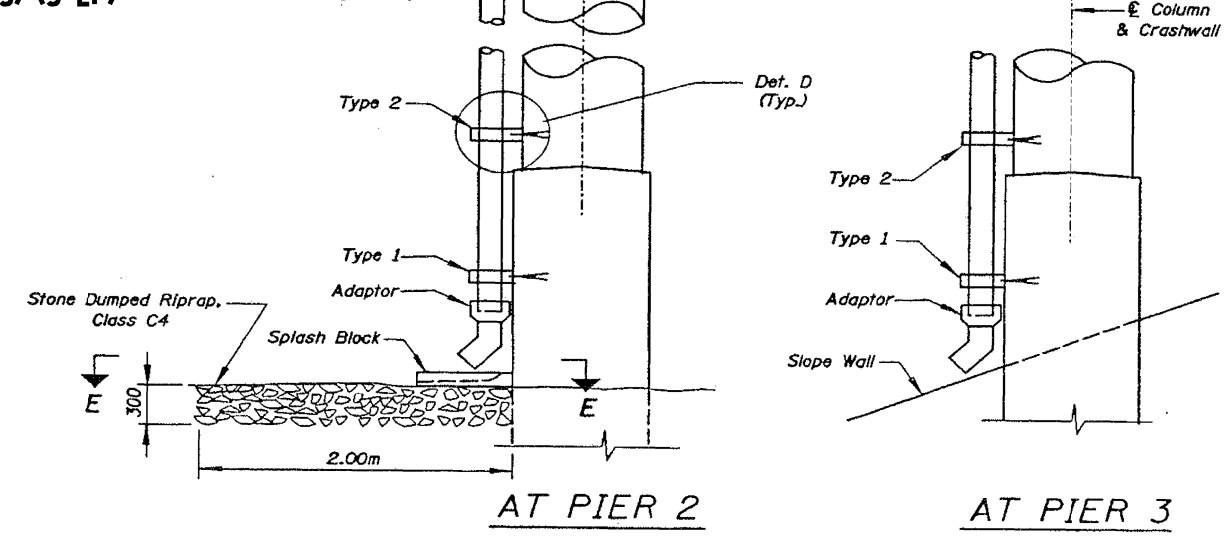
SECTION A-A



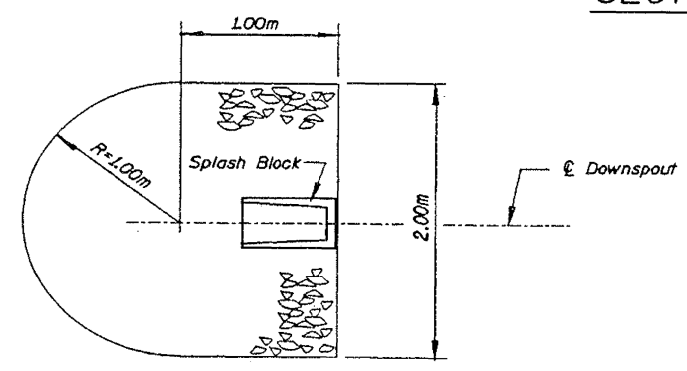
SECTION C-C



SECTION C1-C1



SECTION B-B



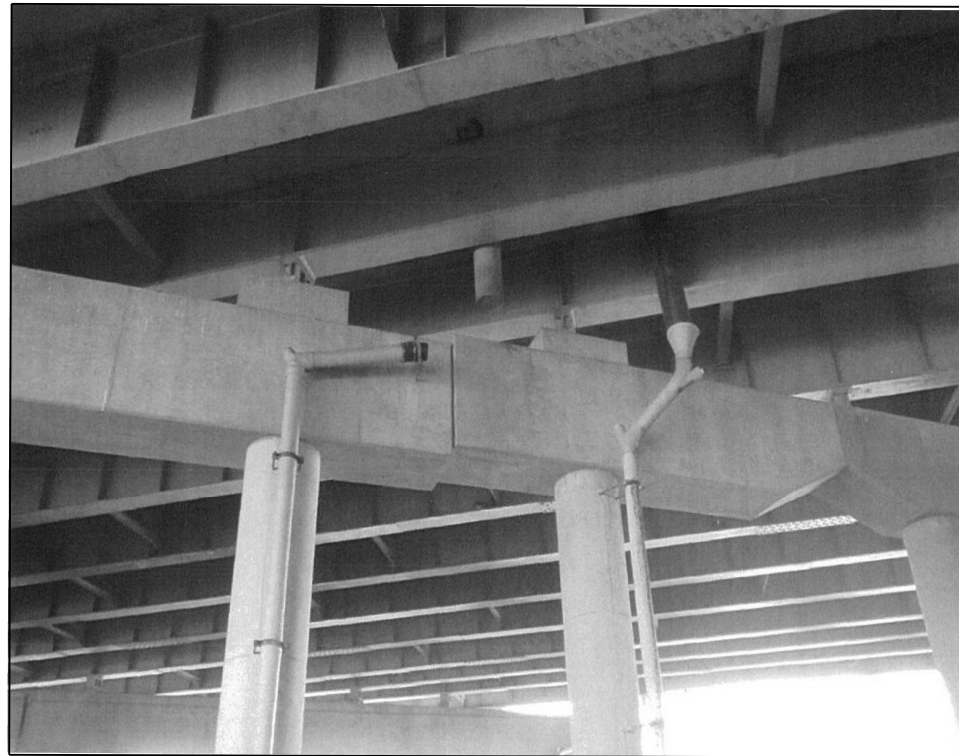
SECTION E-E
 Limits of Stone Dumped Riprap, Class C4.

FILE NAME =	USER NAME = dahhnr	DESIGNED -	REVISED -
pw\11084EBIDINTEG\illinois.gov\PIWIDOT\Documents\DOT Offices\District 1\Projects\016-0005\Drawings\Design\016816-sht-plan.dgn		DRAWN -	REVISED -
Default	PLOT SCALE = 100.0000' / in.	CHECKED -	REVISED -
	PLOT DATE = 12/21/2015	DATE -	REVISED -

STATE OF ILLINOIS
DEPARTMENT OF TRANSPORTATION

LOCATION 3 (WB SN 016-0005)			
DRAINAGE DETAILS			
SCALE:	SHEET 3	OF 4 SHEETS	STA. TO STA.

F.A. RTE.	SECTION	COUNTY	TOTAL SHEETS	SHEET NO.
VAR.	2015-084T	COOK	22	17
CONTRACT NO. 62B86				
ILLINOIS FED. AID PROJECT				



016-0004 AND 016-0005 PHOTO #1
PIER 2 _ WEST FACE



016-0004 AND 016-0005 PHOTO #2
PIER 3 _ WEST FACE

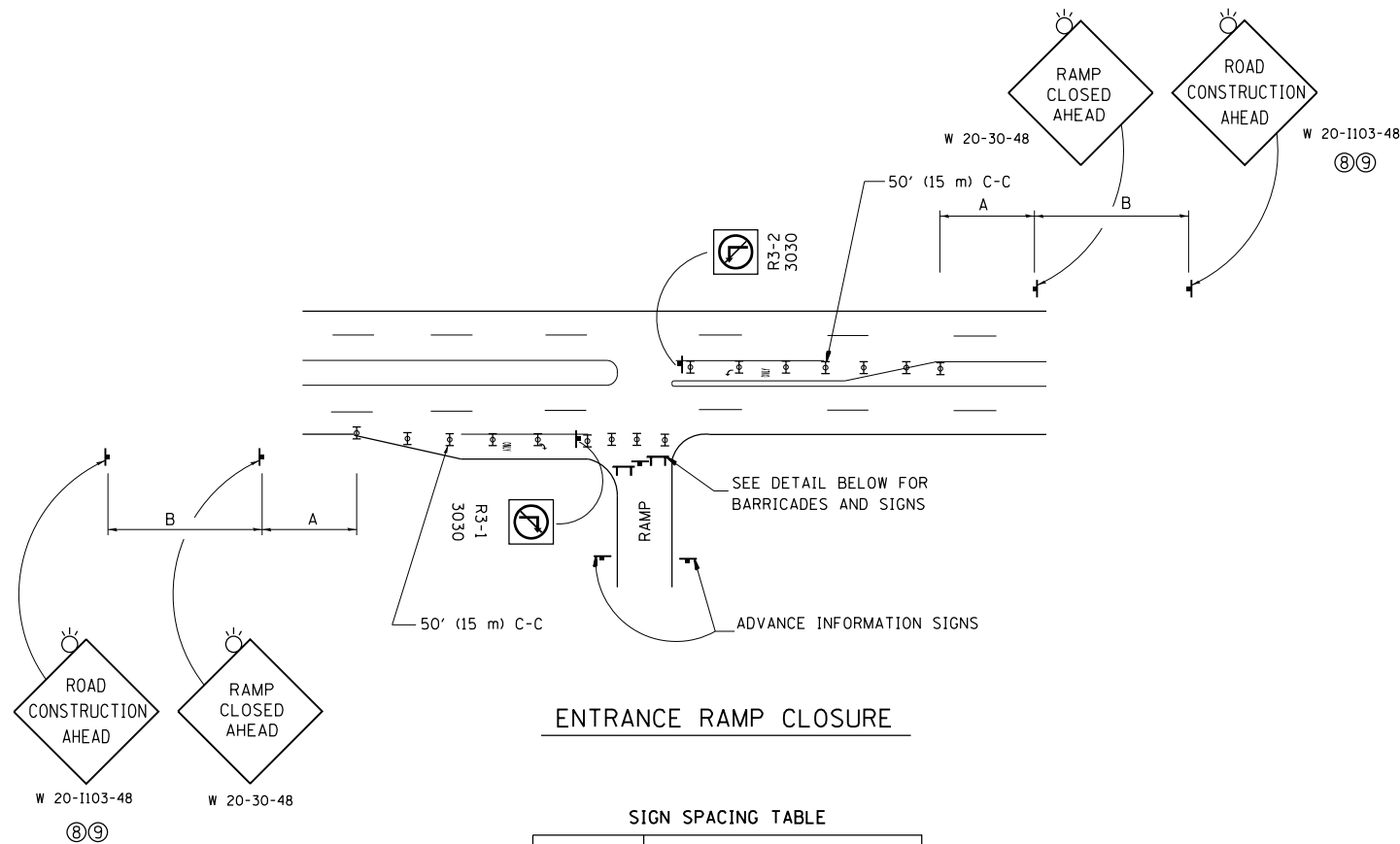
FILE NAME =	USER NAME = dahhr	DESIGNED -	REVISED -
p:\11084EBID\INTEG\illinois.gov\PWIDOT\Documents\DOT Offices\District 1\Projects\016-0004\Drawings\Design\016-0004-shr-plan.dgn		CHECKED -	REVISED -
Default	PLOT SCALE = 100.0000' / in.	DATE -	REVISED -
	PLOT DATE = 12/21/2015		

**STATE OF ILLINOIS
DEPARTMENT OF TRANSPORTATION**

**LOCATION 3 (EB SN 016-0004 AND WB 016-0005)
DETAILS**

SCALE: SHEET 4 OF 4 SHEETS STA. TO STA.

F.A. RTE.	SECTION	COUNTY	TOTAL SHEETS	SHEET NO.
VAR.	2015-084T	COOK	22	18
CONTRACT NO. 62B86				
ILLINOIS FED. AID PROJECT				

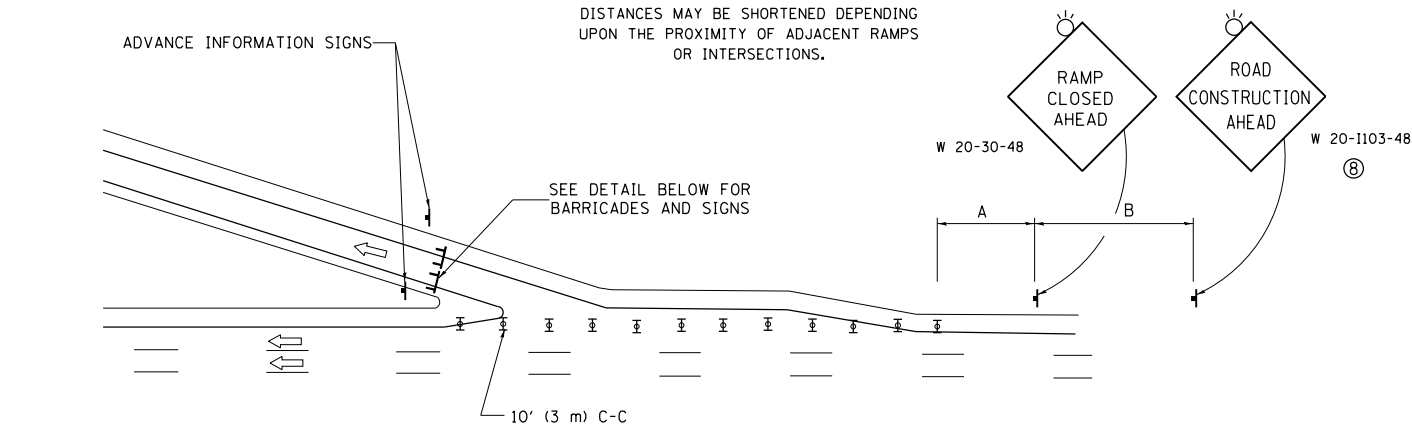


ENTRANCE RAMP CLOSURE

SIGN SPACING TABLE

FACILITY	DISTANCE BETWEEN SIGNS	
	A	B
EXPRESSWAY >24 HOURS	1000' (300 m)	1500' (450 m)
EXPRESSWAY <24 HOURS	500' (150 m)	500' (150 m)
ARTERIAL 55 MPH	500' (150 m)	500' (150 m)
ARTERIAL 50-45 MPH	350' (100 m)	350' (100 m)
ARTERIAL <45 MPH	200' (60 m)	200' (60 m)

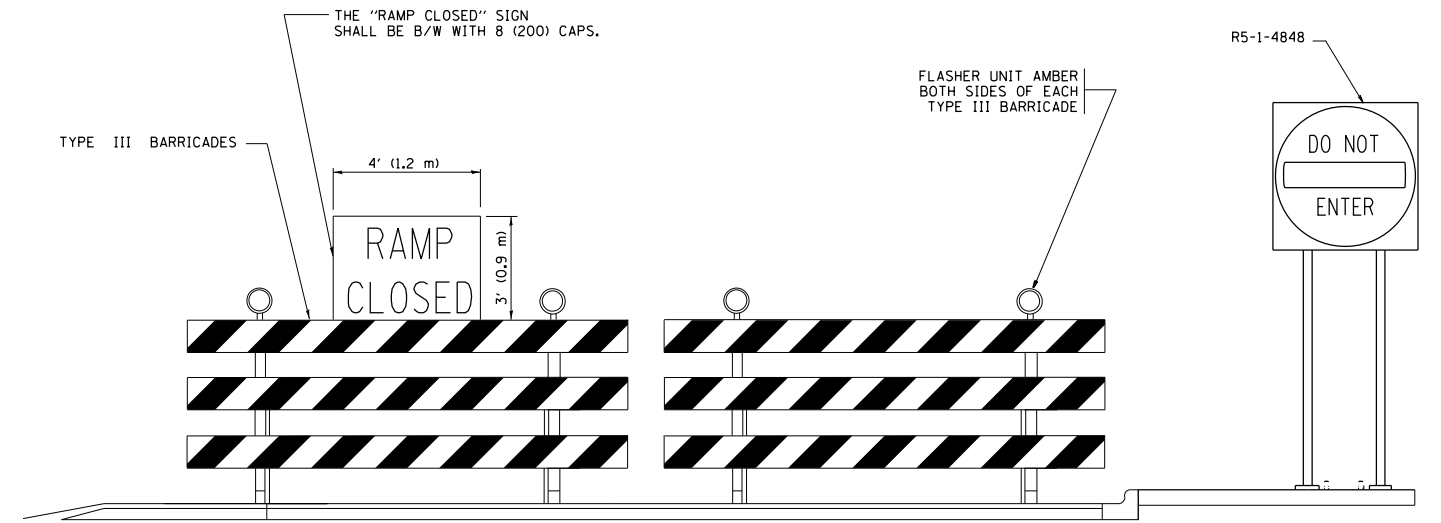
DISTANCES MAY BE SHORTENED DEPENDING UPON THE PROXIMITY OF ADJACENT RAMPS OR INTERSECTIONS.



EXIT RAMP CLOSURE

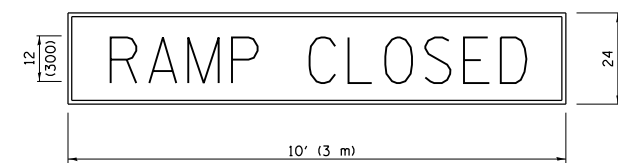
SYMBOLS

- ⊥ TYPE II BARRICADE OR DRUM WITH STEADY BURN MONO-DIRECTIONAL LIGHT
- ⊓ TYPE III BARRICADE WITH 2 FLASHING LIGHTS



DETAIL FOR REQUIRED BARRICADES & SIGNS

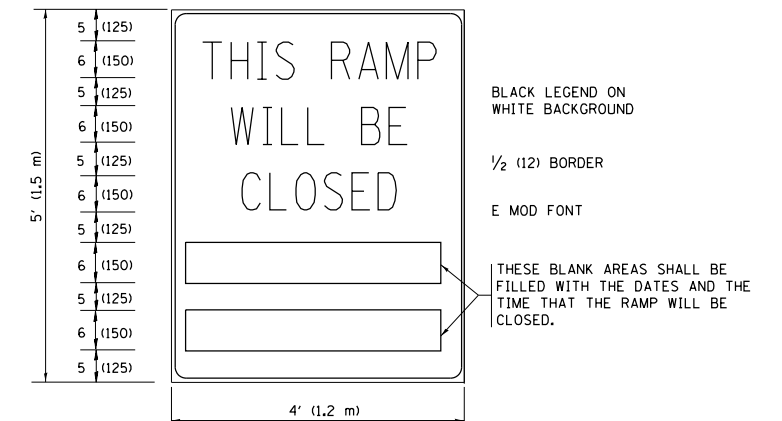
RAMP CLOSURE ADVANCE WARNING SIGN



BLACK LEGEND ON ORANGE BACKGROUND MOUNTED DIAGONALLY
E MOD FONT
1 (25) BORDER

THESE SIGNS ARE REQUIRED ON ALL THE EXIT GUIDE SIGNS FOR EXIT RAMPS THAT WILL BE CLOSED FOR MORE THAN FOUR (4) CONSECUTIVE DAYS.

RAMP CLOSURE ADVANCE INFORMATION SIGN



BLACK LEGEND ON WHITE BACKGROUND

1/2 (12) BORDER

E MOD FONT

THESE BLANK AREAS SHALL BE FILLED WITH THE DATES AND THE TIME THAT THE RAMP WILL BE CLOSED.

THESE SIGNS ARE REQUIRED ON BOTH SIDES OF THE RAMP, MINIMUM OF 1 WEEK IN ADVANCE OF THE CLOSURE.

THESE SIGNS SHALL BE FABRICATED AND PAID FOR ACCORDING TO THE TEMPORARY INFORMATION SIGNING SPECIAL PROVISION

GENERAL NOTES:

- ① CONES MAY BE SUBSTITUTED FOR DRUMS OR TYPE II BARRICADES DURING DAY OPERATIONS. CONES SHALL BE A MINIMUM OF 28 (700) HIGH.
- ② STEADY BURN LIGHTS WILL NOT BE REQUIRED FOR DAY OPERATIONS.
- ③ A FLAGGER SHALL BE POSITIONED AT EACH CLOSED RAMP THAT IS OPEN TO CONSTRUCTION VEHICLES, PRECEDED BY A W20-7 FLAGGER WARNING SIGN.
- ④ ALL ROUTE MARKERS AND TRAILBLAZER ASSEMBLIES WHICH DIRECT MOTORISTS TO A CLOSED ENTRANCE RAMP SHALL BE COVERED WHEN THE RAMP IS CLOSED FOR MORE THAN FOUR (4) DAYS.
- ⑤ THE SIGNING AND BARRICADING WHICH IS REQUIRED BY THIS DETAIL SHALL BE INCLUDED IN THE COST OF TRAFFIC CONTROL AND PROTECTION (EXPRESSWAYS).
- ⑥ AUTHORIZATION FROM THE DISTRICT'S BUREAU OF TRAFFIC IS REQUIRED FOR ALL RAMP CLOSURES.
- ⑦ THE RAMP CLOSURE ADVANCE INFORMATION SIGNS SHALL BE ERECTED IF THE CLOSURE TIME EXCEEDS TWENTY-FOUR (24) HOURS. ADDITIONAL ADVANCE WARNING SIGNS ON EXIT GUIDE SIGNING WILL BE REQUIRED FOR EXIT RAMP CLOSURES THAT EXCEED FOUR (4) DAYS IN LENGTH
- ⑧ ROAD CONSTRUCTION AHEAD SIGNS MAY BE OMITTED WHEN THIS DETAIL IS USED IN CONJUNCTION WITH OTHER TRAFFIC CONTROL THAT ALREADY INCLUDES A ROAD CONSTRUCTION AHEAD SIGN.
- ⑨ ARTERIAL ROAD CONSTRUCTION AHEAD SIGNS SHALL BE INSTALLED ON THE LEFT SIDE OF TRAFFIC IF THE MEDIAN IS MORE THAN 10 FT WIDE.

ALL DIMENSIONS ARE IN INCHES (MILLIMETERS) UNLESS OTHERWISE SHOWN.

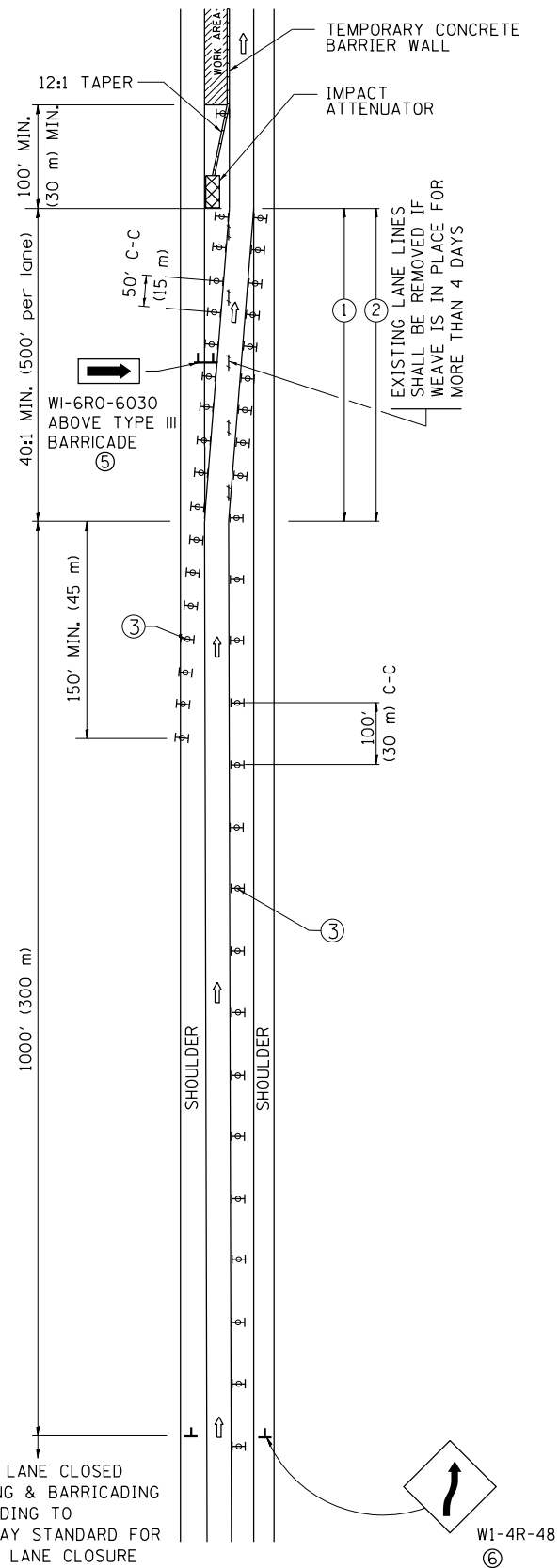
FILE NAME =	USER NAME = dahhr	DESIGNED - DWS	REVISED - JAF 02-06
pw\11084EBIDINTEG.illinois.gov\PIWIDOT\Documents\IDOT Offices\District 1\Projects\DI18\BARRIADA\Design\DistStd.dgn		CHECKED -	REVISED - SPB 01-07
		DATE - 02-83	REVISED - SPB 12-09
			REVISED - MD 06-13

STATE OF ILLINOIS
DEPARTMENT OF TRANSPORTATION

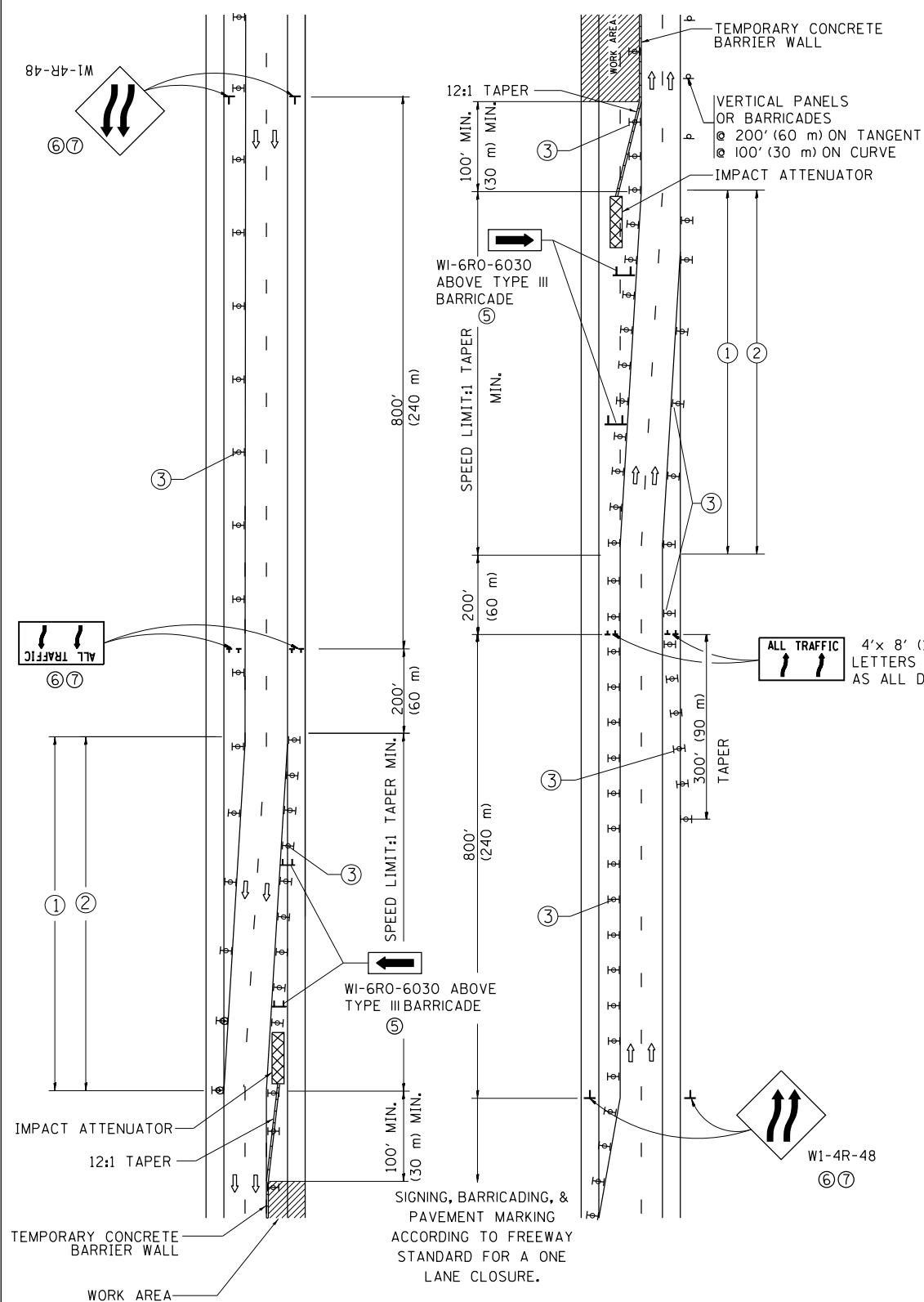
ENTRANCE AND EXIT RAMP CLOSURE DETAILS		SCALE: NONE	SHEET NO. 1 OF 1 SHEETS	STA. TO STA.
---	--	-------------	-------------------------	--------------

F.A. RTE.	SECTION	COUNTY	TOTAL SHEETS	SHEET NO.
	2015-084T		22	19
TC-08		CONTRACT NO. 62B86		
FED. ROAD DIST. NO. 1 ILLINOIS FED. AID PROJECT				

SINGLE LANE WEAVE



MULTI-LANE WEAVE



GENERAL NOTES

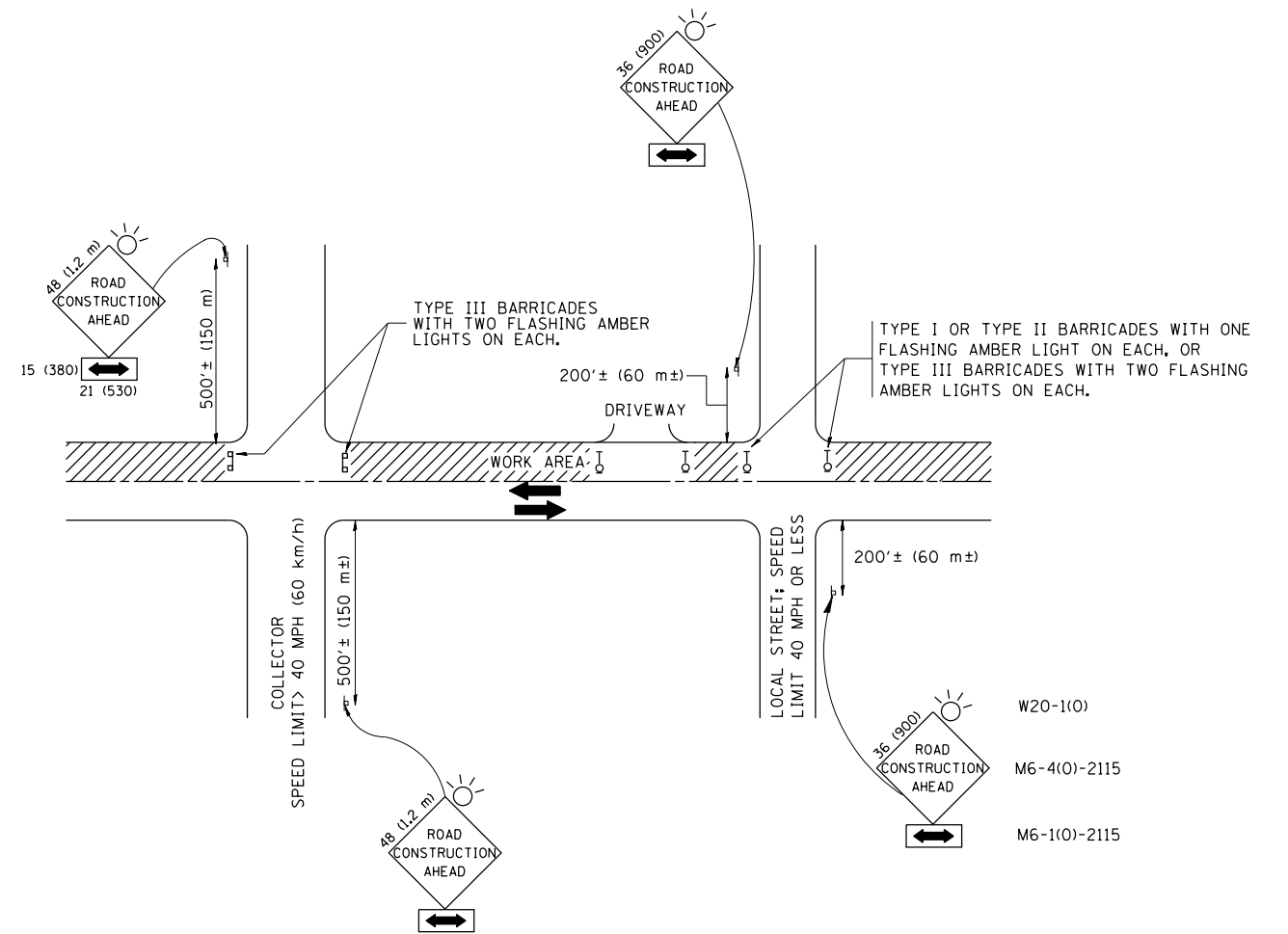
- EXISTING CONFLICTING PAVEMENT MARKING LINES SHALL BE REMOVED. PAVEMENT MARKING REMOVAL SHALL NOT BE REQUIRED FOR SINGLE LANE WEAVES UNDER 4 DAYS IN DURATION.
- CONTINUOUS REFLECTIVE TEMPORARY PAVEMENT MARKING TAPE SHALL BE PLACED THROUGHOUT THE TAPER AND FOR 300' (90 m) ALONG SIDE THE WORK AREA WHERE THE CLOSURE TIME IS GREATER THAN FOURTEEN DAYS. THE LEFT EDGE LINE SHALL BE YELLOW AND THE RIGHT EDGE LINE SHALL BE WHITE. FOR MULTI-LANE WEAVES LANE LINES SHALL BE 5 INCH, 10'-30' (3 m-9 m) SKIP DASH, WHITE.
- PLASTIC DRUMS WITH STEADY BURN LIGHTS AT 50' (15 m) C-C SPACING IN TAPERS AND 100' (30 m) C-C SPACING IN TANGENTS.
- ALL SIGNS SHALL BE POST MOUNTED IF THE CLOSURE TIME EXCEEDS FOUR DAYS.
- TYPE III BARRICADES MAY BE OMITTED FOR SINGLE-LANE WEAVES UNDER 24-HOURS IN DURATION. WI-6 SIGNS WILL STILL BE REQUIRED. IF THE WIDTH OF OFFSET IS LESS THAN 6' THEN THE TYPE III BARRICADE WITH ATTACHED ARROW SIGN PANEL CAN BE ELIMINATED IN THE TAPER AREAS.
- WHEN THE LENGTH OF THE SHIFTED SEGMENT (DISTANCE BETWEEN WEAVE POINTS) IS LESS THAN 1500', DOUBLE REVERSE CURVE SIGNS (W24-1) SHOULD BE USED INSTEAD OF THE REVERSE CURVE (W1-4) SIGNS. ARROWS ON THE 4'X8' "ALL TRAFFIC" SIGNS SHALL BE THE SAME SHAPE.
- THE NUMBER OF ARROWS ON THESE SIGNS SHALL MATCH THE NUMBER OF LANES OPEN TO TRAFFIC.

SYMBOLS

- DIRECTION OF TRAFFIC
- WORK AREA
- SIGN ON PORTABLE OR PERMANENT SUPPORT
- TYPE II BARRICADE OR DRUM WITH MONO-DIRECTIONAL STEADY BURNING LIGHT
- TEMPORARY CONCRETE BARRIER WALL
- IMPACT ATTENUATOR
- W1-4R-48 (6, 7)
- W24-1-48 (7)

ALL DIMENSIONS ARE IN INCHES (MILLIMETERS) UNLESS OTHERWISE SHOWN

FILE NAME =	USER NAME = dahhnr	DESIGNED - DWS	REVISED - JAF 02-06	STATE OF ILLINOIS DEPARTMENT OF TRANSPORTATION	TRAFFIC CONTROL DETAILS FOR FREEWAY SINGLE & MULTI-LANE WEAVE			F.A. RTE.	SECTION	COUNTY	TOTAL SHEETS	SHEET NO.
p:\11\084EBID\INTEG.illinois.gov\PIWID\Documents\IDOT Offices\District 1\Projects\DI16\Drawings\Design\DistStd.dgn		CHECKED -	REVISED - SPB 01-07		SCALE: NONE	SHEET NO. 1 OF 1 SHEETS	STA.	TO STA.	2015-084T		22	20
PLOT SCALE = 100.0000' / 1in.		DATE - 02-87	REVISED - SPB 12-09						TC-09			
PLOT DATE = 12/21/2015			REVISED - MD 06-13						FED. ROAD DIST. NO. 1 ILLINOIS FED. AID PROJECT			



TRAFFIC CONTROL AND PROTECTION FOR SIDE ROADS, INTERSECTIONS, AND DRIVEWAYS

NOTES:

- A. FOR NO LANE RESTRICTION ON THE SIDE ROAD OR DRIVEWAYS
 1. SIDE ROAD WITH A SPEED LIMIT OF 40 MPH (60 km/h) OR LESS AS SHOWN ON THE DRAWING AND AS DIRECTED BY THE ENGINEER:
 - a) ONE ROAD CONSTRUCTION AHEAD SIGN 36 x 36 (900x900) WITH A FLASHER AND FLAG MOUNTED ON IT APPROXIMATELY 200' (60 m) IN ADVANCE OF THE MAIN ROUTE.
 - b) THE CLOSED PORTION OF THE MAIN ROUTE SHALL BE PROTECTED BY BLOCKING WITH TYPE I, TYPE II OR TYPE III BARRICADES, 1/3 OF THE CROSS SECTION OF THE CLOSED PORTION.
 2. SIDE ROAD WITH A SPEED LIMIT GREATER THAN 40 MPH (60 km/h) AS SHOWN ON THE DRAWING AND AS DIRECTED BY THE ENGINEER:
 - a) ONE ROAD CONSTRUCTION AHEAD SIGN 48 x 48 (1.2 m x 1.2 m) WITH A FLASHER MOUNTED ON IT APPROXIMATELY 500' (150 m) IN ADVANCE OF THE MAIN ROUTE.
 - b) THE CLOSED PORTION OF THE MAIN ROUTE SHALL BE PROTECTED BY BLOCKING WITH TYPE III BARRICADES, 1/2 OF THE CROSS SECTION OF THE CLOSED PORTION.
 3. WHEN THE SIDE ROAD LIES BETWEEN THE BEGINNING OF THE MAINLINE SIGNING AND THE WORK ZONE, A SINGLE HEADED ARROW (M6-1) SHALL BE USED IN LIEU OF THE DOUBLE HEADED ARROW (M6-4).
- B. FOR A LANE CLOSURE ON A SIDE ROAD OR DRIVEWAY:

USE APPLICABLE PORTIONS OF THE TYPICAL APPLICATION OF TRAFFIC CONTROL DEVICES (STD. 701501, STD. 701606 OR THE APPROPRIATE STANDARD). THE SPACING OF SIGNS AND BARRICADES SHALL BE ADJUSTED FOR FIELD CONDITIONS AS DIRECTED BY THE ENGINEER. THE DIRECTIONAL ARROW SHALL BE COVERED OR REMOVED WHEN NO LONGER CONSISTENT WITH THE SIDE ROAD LANE CLOSURE.

 - C. ADVANCE WARNING SIGNS ARE TO BE OMITTED ON DRIVEWAY UNLESS OTHERWISE NOTED.
 - D. THE TRAFFIC CONTROL AND PROTECTION FOR SIDE ROADS, INTERSECTIONS, AND DRIVEWAYS SHALL BE INCIDENTAL TO THE COST OF SPECIFIED TRAFFIC CONTROL STANDARDS OR ITEMS.

All dimensions are in millimeters (inches) unless otherwise shown.

FILE NAME =	USER NAME = dahhr	DESIGNED - LHA	REVISED - J. OBERLE 10-18-95
p:\1\084EBIDINTEG\illinois.gov\PIWIDOT\Documents\IDOT Offices\District 1\Projects\DI16\BROW\Notes\Design\DistStd.dgn			REVISED - A. HOUSEH 03-06-96
	PLOT SCALE = 100.0000' / in.	CHECKED -	REVISED - A. HOUSEH 10-15-96
	PLOT DATE = 12/21/2015	DATE - 06-89	REVISED - T. RAMMACHER 01-06-00

STATE OF ILLINOIS
DEPARTMENT OF TRANSPORTATION

TRAFFIC CONTROL AND PROTECTION FOR
SIDE ROADS, INTERSECTIONS, AND DRIVEWAYS

SCALE: NONE SHEET NO. 1 OF 1 SHEETS STA. TO STA.

F.A. RTE.	SECTION	COUNTY	TOTAL SHEETS	SHEET NO.
	2015-084T		22	21
TC-10			CONTRACT NO. 62B86	
FED. ROAD DIST. NO. 1 ILLINOIS FED. AID PROJECT				

