

STATE OF ILLINOIS
DEPARTMENT OF TRANSPORTATION
DIVISION OF HIGHWAYS

ROUTE	SECTION	COUNTY	TOTAL SHEETS	SHEET NUMBER
N/A	12-00127-00-SW	JACKSON	21	1
JOB NO. C-99-502-13		CONTRACT: 99506		
CITY OF CARBONDALE				

PLANS FOR PROPOSED
LOCAL AGENCY PROJECT

SAFE ROUTES TO SCHOOL
VARIOUS SIDEWALK IMPROVEMENTS
SECTION 12-00127-00-SW

PROJECT NO. SRTS-4009 (225)
CITY OF CARBONDALE
JACKSON COUNTY
JOB NO. C-99-502-13 CONTRACT NO. 99506

INDEX OF SHEETS

SHEET NO.	DESCRIPTION
1	COVER SHEET, INDEX OF SHEETS, HIGHWAY STANDARDS, SUMMARY OF QUANTITIES
2	SCHEDULE OF QUANTITIES, TYPICAL SECTION, GENERAL NOTES
3	SCHEDULE OF QUANTITIES
4	DETAILS
5-11	GRAND AVENUE SIDEWALK IMPROVEMENTS PLAN SHEETS
12-14	JACKSON STREET SIDEWALK IMPROVEMENTS PLAN SHEETS
15	JACKSON STREET - WALL STREET DETAILS
16	JACKSON STREET - WALL STREET CROSS-SECTIONS
17-21	WALL STREET SIDEWALK IMPROVEMENTS PLAN SHEETS

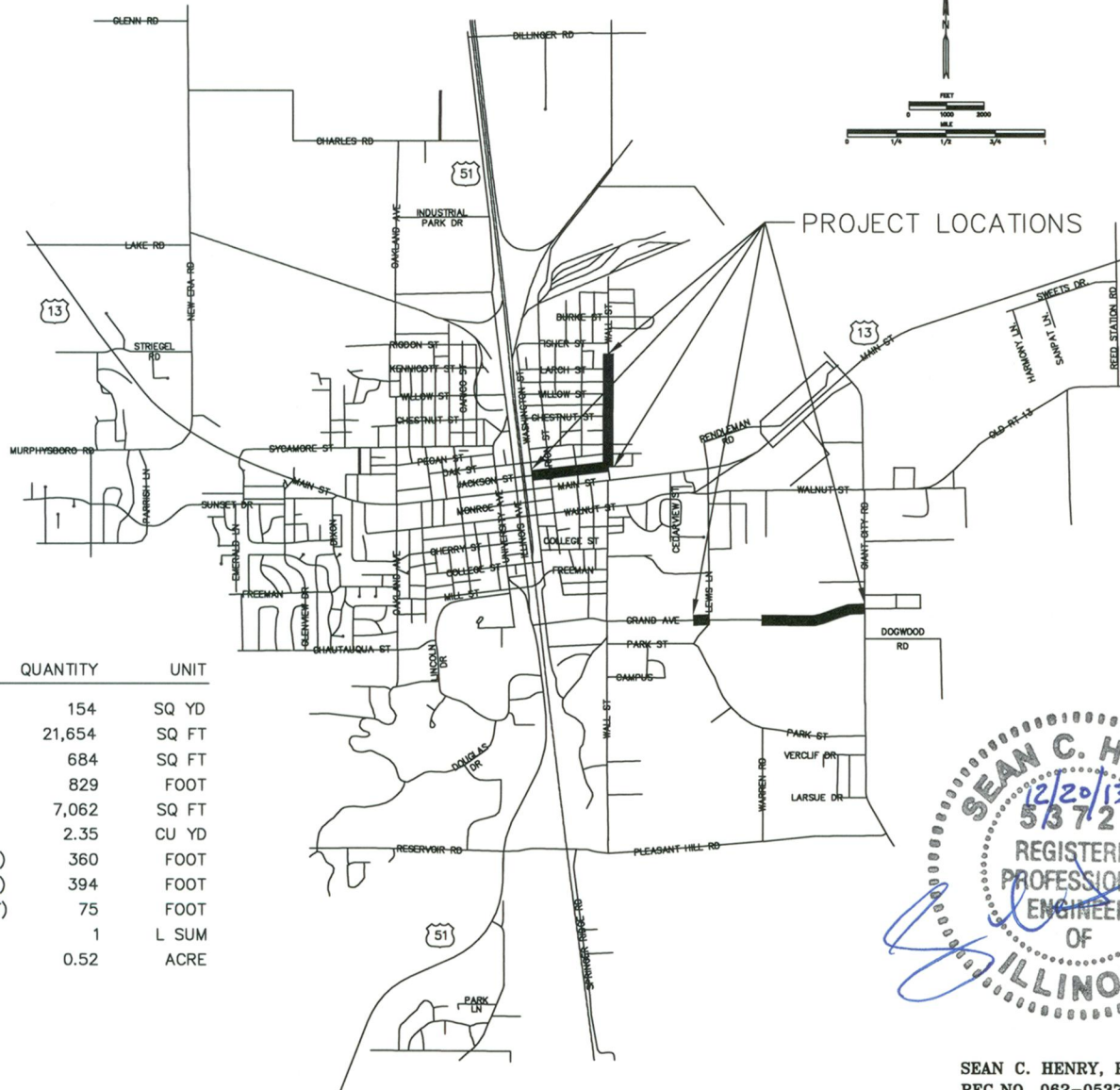
HIGHWAY STANDARDS

424001-07	PERPENDICULAR CURB RAMPS FOR SIDEWALKS
424006-01	DIAGONAL CURB RAMPS FOR SIDEWALKS
424011-01	CORNER PARALLEL CURB RAMPS FOR SIDEWALKS
424016-01	MID-BLOCK CURB RAMPS FOR SIDEWALKS
424021-02	DEPRESSED CORNER FOR SIDEWALKS
424026-01	ENTRANCE/ALLEY PEDESTRIAN CROSSINGS
606001-05	CONCRETE CURB TYPE B AND COMBINATION CONCRETE CURB AND GUTTER
701501-06	URBAN LANE CLOSURE, 2L, 2W, UNDIVIDED
701502-06	URBAN LANE CLOSURE, 2L, 2W, WITH BIDIRECTIONAL LEFT TURN LANE
701901-03	TRAFFIC CONTROL DEVICES

SUMMARY OF QUANTITIES

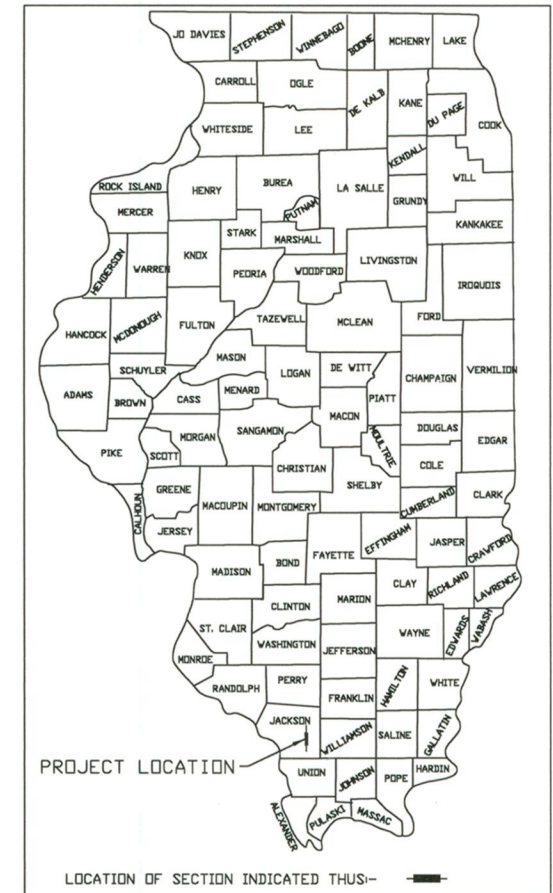
CODED PAY ITEM NUMBER	DESCRIPTION OF ITEM	QUANTITY	UNIT
42300200	PORTLAND CEMENT CONCRETE DRIVEWAY PAVEMENT, 6 INCH	154	SQ YD
42400100	PORTLAND CEMENT CONCRETE SIDEWALK 4 INCH	21,654	SQ FT
42400800	DETECTABLE WARNINGS	684	SQ FT
44000500	COMBINATION CURB AND GUTTER REMOVAL	829	FOOT
44000600	SIDEWALK REMOVAL	7,062	SQ FT
50300225	CONCRETE STRUCTURES	2.35	CU YD
60603900	COMBINATION CONCRETE CURB AND GUTTER, TYPE B-6.12 (ABUTTING EXISTING PAVEMENT)	360	FOOT
60604500	COMBINATION CONCRETE CURB AND GUTTER, TYPE B-6.18 (ABUTTING EXISTING PAVEMENT)	394	FOOT
60605100	COMBINATION CONCRETE CURB AND GUTTER, TYPE B-6.24 (ABUTTING EXISTING PAVEMENT)	75	FOOT
67100100	MOBILIZATION	1	L SUM
X2500900	SEEDING, CLASS 1 (SPECIAL)	0.52	ACRE

* SPECIALTY ITEMS



LOCATION MAP

8959 FT (1.697 Miles) LENGTH



STATE OF ILLINOIS
DEPARTMENT OF TRANSPORTATION

APPROVED: 12/20/13 DATE
K. B. J.
CITY MANAGER, CITY OF CARBONDALE

PASSED: 12/26/2013 DATE
Dennis W. Halleh
DISTRICT ENGINEER OF LOCAL ROADS & STREETS

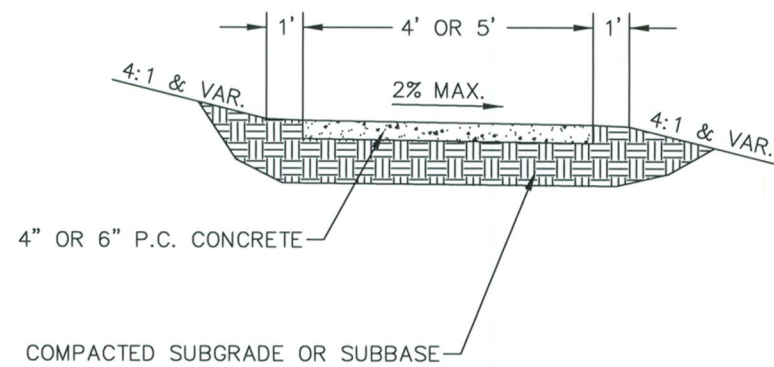
RELEASED FOR BID
BASED ON LIMITED
REVIEW: 12/26/2013 DATE
Jeffrey L. Keim
DEPUTY DIRECTOR OF HIGHWAYS, REGION FIVE ENGINEER



SEAN C. HENRY, P.E.
REG. NO. 062-053729
DATE 12/20/13
EXPIRES 11-30-15



ROUTE	SECTION	COUNTY	TOTAL SHEETS	SHEET NUMBER
N/A	12-00127-00-SW	JACKSON	21	2
JOB NO. C-99-502-13		CONTRACT: 99506		
CITY OF CARBONDALE				



⊙ PCC SIDEWALK TYPICAL SECTION
NOT TO SCALE

GENERAL NOTES

ALL SIDEWALK CONSTRUCTION SHALL MEET THE UNITED STATES ACCESS BOARD'S PUBLIC RIGHTS-OF-WAY ACCESSIBILITY GUIDELINES (PROWAG) PUBLISHED JULY 26, 2011.

ALL SIDEWALKS SHALL HAVE A MAXIMUM CROSS SLOPE OF 2.0% (1:50). ALL SIDEWALKS SHALL HAVE A MINIMUM CROSS SLOPE OF 1.0% (1:100) TO FACILITATE DRAINAGE, UNLESS OTHERWISE SHOWN. ALL SIDEWALKS SHALL HAVE A MAXIMUM LONGITUDINAL SLOPE OF 5% (1:20).

THE CONTRACTOR SHOULD BE AWARE THAT NO EASEMENTS HAVE BEEN ACQUIRED FOR THESE IMPROVEMENTS AND SHALL KEEP ALL OPERATIONS CONFINED TO EXISTING RIGHT-OF-WAY.

THE CONTRACTOR SHALL VERIFY ALL DIMENSIONS AND CONDITIONS IN THE FIELD PRIOR TO ORDERING MATERIALS AND CONSTRUCTION.

PAVEMENT, SIDEWALK, TREES, PLANT MATERIAL, AND EXCESS EXCAVATION ARE TO BE REMOVED FROM SITE AND DISPOSED OF AS NOTED AND SPECIFIED.

ALL EARTH AREAS SHALL BE SLOPED TO DRAIN TO PREVENT PONDING OF ANY WATERS, MAXIMUM SLOPE SHALL BE 4:1 UNLESS OTHERWISE APPROVED BY THE ENGINEER.

THE COST FOR EARTH EXCAVATION NECESSARY TO COMPLETE THE WORK AS SHOWN ON THE PLANS AND AS DIRECTED BY THE ENGINEER SHALL BE INCLUDED IN THE CONTRACT.

ANY TREE ROOTS ENCOUNTERED DURING CONSTRUCTION SHALL BE EXCAVATED AND REMOVED TO A MINIMUM OF 6" BELOW THE SUB-GRADE OF THE PROPOSED SIDEWALK, OR AS DIRECTED BY THE ENGINEER. THE COST OF ROOT REMOVAL SHALL BE INCLUDED IN THE COST FOR PORTLAND CEMENT CONCRETE SIDEWALK OR PORTLAND CEMENT CONCRETE DRIVEWAY PAVEMENT OF THE THICKNESS SPECIFIED.

THE CONTRACTOR SHALL CLEAN ALL SOIL/DIRT DEPOSITED OR SPILLED ON ROADWAY AND SIDEWALK SURFACES AS A RESULT OF CONSTRUCTION.

ALL EARTH SURFACES DISTURBED BY CONSTRUCTION SHALL BE SEEDED AS SPECIFIED AND AS DIRECTED BY THE ENGINEER.

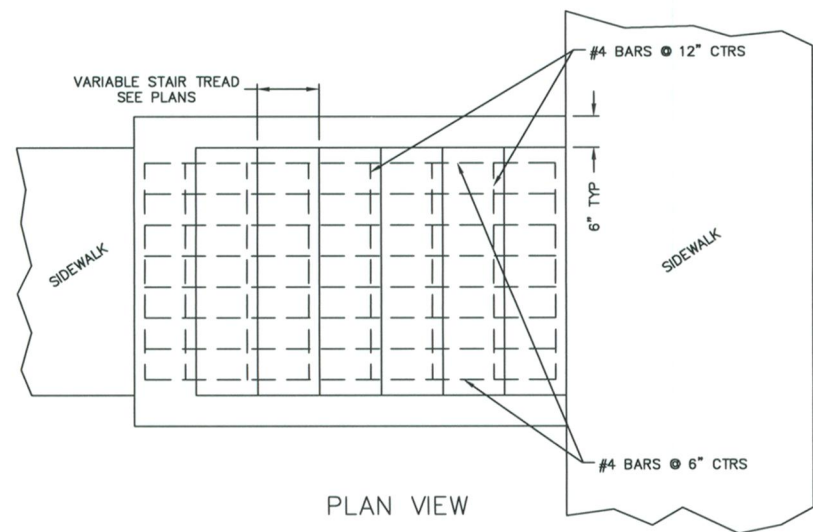
		GRAND AVENUE SCHEDULE OF QUANTITIES									
		PCC DRIVEWAY PAVT 6 (SQ YD)	PC CONC SIDEWALK 4 (SQ FT)	DETECTABLE WARNINGS (SQ FT)	COMB CURB GUTTER REM (FT)	SIDEWALK REM (SQ FT)	COMB CC&G TB6.12 AEP (FT)	COMB CC&G TB6.18 AEP (FT)	COMB CC&G TB6.24 AEP (FT)	SEEDING CL 1 SPL (ACRE)	
FROM STATION	TO STATION										
0+00 RT	3+96 RT	2,050	10		155						
3+71 LT	3+94 LT	161	10	27	161		27				
4+58 LT		147	10	21	159		21				
5+26 LT		128	10	15	128			15			
18+66.5 RT	18+99 RT	130									
19+23 RT	22+54 RT	1,329									
22+54 RT			8	12				12			
23+05 RT			8	12				12			
23+05 RT	28+00 RT	1,990									
28+00 RT	31+39 RT	1,366									
31+39 RT			8	17		17					
31+70 RT			8	12		12					
31+70 RT	34+29 RT	1,045									
34+29 RT			8	11		11					
34+59 RT			8	10		10					
34+59 RT	37+62 RT	1,229									
37+62 RT			8	10		10					
37+94 RT			8	10		10					
37+94 RT	42+00 RT	1,618									
42+00 RT	45+72 RT	1,493									
45+72 RT	45+84 RT	78	14	15	78			15			
45+81 LT		124	22	21	124			21			
46+45 LT		48	12		48						
	TOTALS:	12,936	152	193	853	70	48	75	0.28		

ROUTE	SECTION	COUNTY	TOTAL SHEETS	SHEET NUMBER
N/A	12-00127-00-SW	JACKSON	21	3
JOB NO. C-99-502-13		CONTRACT: 99506		
CITY OF CARBONDALE				

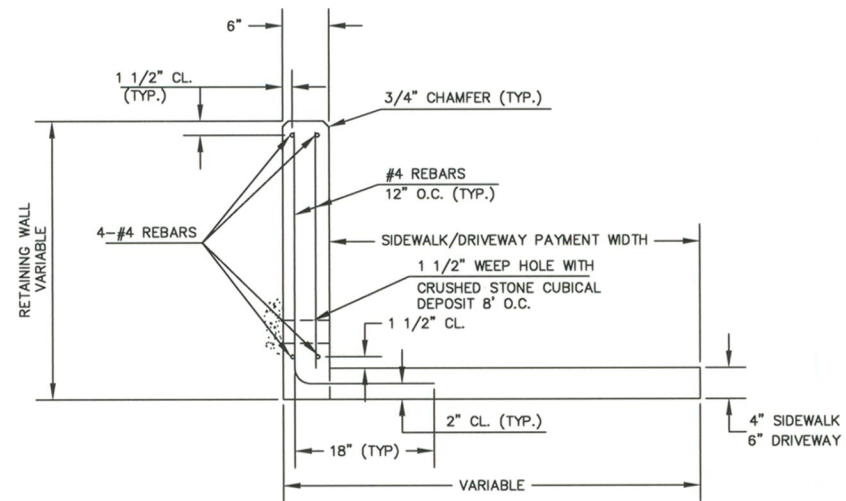
JACKSON STREET SCHEDULE OF QUANTITIES												
FROM STATION	TO STATION		PCC DRIVEWAY PAVT 6 (SQ YD)	PC CONC SIDEWALK 4 (SQ FT)	DETECTABLE WARNINGS (SQ FT)	COMB CURB GUTTER REM (FT)	SIDEWALK REM (SQ FT)	COMB CC&G TB6.12 AEP (FT)	COMB CC&G TB6.18 AEP (FT)	COMB CC&G TB6.24 AEP (FT)	CONC STRUCT (CU YD)	SEEDING CL 1 SPL (ACRE)
6+44 RT	6+67 RT		227	18	19	227		19				
7+01.5 RT	7+24 RT		189	16	20	189		20				
6+45.5 LT	6+67 LT		191	18	20	191		20				
7+03.5 LT	7+18 LT		146	16	16	146		16				
7+18 LT	9+36 LT	5.5	829			872						
9+36 LT	12+17 LT		230			230						
11+61 LT	11+76 LT	8.5				75						
12+35 LT	12+72 LT		163			60						
12+72 LT	12+86 LT	14										
12+86 LT	13+85 LT		396	8								
14+07 LT	14+59 LT		208	8								
14+59 LT	14+77 LT	18										
14+77 LT	15+09 LT		128									
15+09 LT	15+24 LT	15										
15+24 LT	15+72 LT		192									
15+72 LT	15+87 LT	16				144						
15+87 LT	17+47 LT		640									
17+47 LT	17+59 LT	12										
17+59 LT	17+94 LT		140									
17+94 LT	18+06 LT	12										
18+06 LT	19+26 LT		480									
19+26 LT	19+39 LT	13										
19+39 LT	20+33 LT		376									
20+33 LT	20+45 LT	12										
20+45 LT	20+93 LT		192									
20+93 LT	21+06 LT	13										
21+06 LT	22+03 LT		388									
21+43.3 LT	22+17 LT					363						
21+81.5 LT											1.30	
22+03.7 LT	22+06.6 LT										0.55	
22+05 LT	22+08.6 LT		100	8	20	133	20					
22+52 LT			110	8	22	123	22					
22+07 RT											0.50	
22+09 RT			64	8	14	88	14					
22+51 RT			60	24	17	48	17					
	TOTALS:		139	5,449	132	148	2,889	73	75		2.35	0.17

WALL STREET SCHEDULE OF QUANTITIES												
FROM STATION	TO STATION		PCC DRIVEWAY PAVT 6 (SQ YD)	PC CONC SIDEWALK 4 (SQ FT)	DETECTABLE WARNINGS (SQ FT)	COMB CURB GUTTER REM (FT)	SIDEWALK REM (SQ FT)	COMB CC&G TB6.12 AEP (FT)	COMB CC&G TB6.18 AEP (FT)	COMB CC&G TB6.24 AEP (FT)	CONC STRUCT (CU YD)	SEEDING CL 1 SPL (ACRE)
1+93 LT	2+04.6 LT		47	8	14	47	14					
2+03.4 LT	2+21.5 LT	15				126						
2+19 LT	2+28 LT		36	8	10	36	10					
3+58 LT			48	8	8		8					
3+58.3 RT	3+76.8 RT		112	16	8	112	8					
3+64 LT	3+73 LT		36	8	14	36	14					
4+02.8 RT	4+23 RT		81	8	9	81	9					
4+05 LT	4+14.5 LT		38	8	9	38	9					
5+14 LT	5+20 LT		24	8	11	24	11					
5+34.2 LT	5+43.2 LT		36	8	15	36	15					
6+05.6 LT	6+21 LT		76	8	18	80		18				
6+32.5 RT	6+55.3 RT		152	28	29	152	29					
6+52.6 LT	6+75.4 LT		177	32	23	153		23				
6+83.4 RT	6+93.4 RT		40	8	12	44	12					
7+97 LT	8+11.5 LT		58	8	8	58		8				
8+44.6 LT	8+56 LT		106	8	15	116		15				
13+27 LT	13+40 LT		110	8	14	110		14				
13+63.5 RT	13+91.5 RT		136	12	10	112	10					
13+72 LT	13+96 LT		134	22	15	134		15				
16+77.8 LT	16+88.4 LT		84	8	15	94		15				
17+22 LT	17+37.5 LT		99	8	15	110		15				
19+76.4 LT	19+94 LT		119	18	14	103		14				
19+82.6 RT	20+07.3 RT		123	12	8	99	8					
20+27 LT	20+40 LT		93	8	9	93		9				
23+13.5 LT	23+25 LT		79	8	17	90		17				
23+59 LT	23+71.5 LT		83	8	16	98		16				
25+84 RT	26+18 RT		136	8	8	136	8					
26+51.3 LT	26+64 LT		85	18	15	85		15				
26+62 RT	26+82 RT		89	12	12	89	12					
27+01 LT	27+18 LT		98	12	21	118		21				
27+08 RT	27+17 RT		36			36						
27+24 LT	27+64 LT		160		30	160	30					
28+70.6 LT	28+94.5 LT		130	30	25	130		25				
28+81.7 RT	29+07 RT		161	12	10	137	10					
29+70 LT	30+05 LT		247	24	31	247		31				
	TOTALS:		15	3,269	400	488	3,320	217	271			0.07

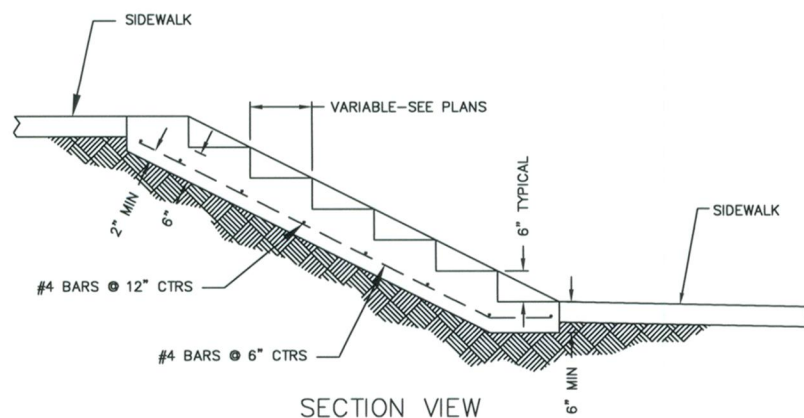
ROUTE	SECTION	COUNTY	TOTAL SHEETS	SHEET NUMBER
N/A	12-00127-00-SW	JACKSON	21	4
JOB NO. C-99-502-13		CONTRACT: 99506		
CITY OF CARBONDALE				



PLAN VIEW



SECTION
RETAINING WALL ADJACENT TO SIDEWALK OR DRIVEWAY



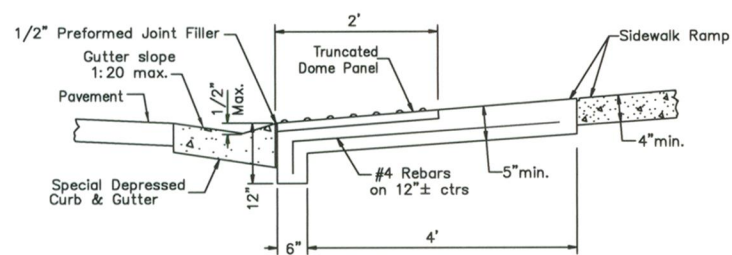
SECTION VIEW

CONCRETE STEPS DETAIL
NOT TO SCALE

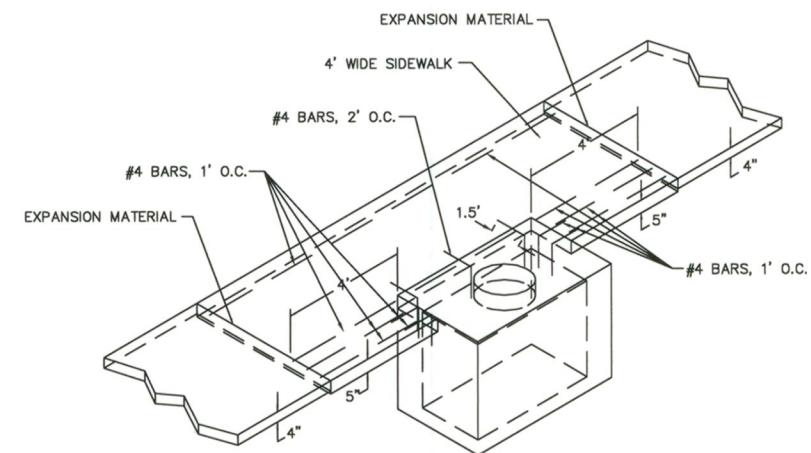
NOTES

- SIDEWALK SHALL BE PAID FOR AT THE CONTRACT UNIT PRICE PER SQ. FT. FOR P.C.C. SIDEWALK 4". DRIVEWAY SHALL BE PAID FOR AT THE CONTRACT UNIT PRICE PER SQ. YD. FOR P.C.C. DRIVEWAY 6".
- RETAINING WALL SHALL BE PAID FOR AT THE CONTRACT UNIT PRICE PER CU. YD. FOR CONCRETE STRUCTURES. REINFORCEMENT BARS SHALL NOT BE PAID FOR SEPARATELY BUT SHALL BE INCLUDED IN THE COST OF CONCRETE STRUCTURES.
- EARTH EXCAVATION NECESSARY FOR CONSTRUCTION OF THE RETAINING WALL SHALL NOT BE PAID FOR SEPARATELY BUT SHALL BE INCLUDED IN THE COST OF CONCRETE STRUCTURES.
- LOCATION OF EXPANSION JOINTS AND/OR CONSTRUCTION JOINTS IN WALL SHALL OCCUR AT THE SAME LOCATION AS IN THE SIDEWALK OR DRIVEWAY.

RETAINING WALL DETAIL
NOT TO SCALE



CURB RAMP TOE WALL DETAIL
NOT TO SCALE



NOTE: 5/8" HOOK BARS WITH THREADED COUPLING MAY BE USED IN LIEU OF THE #4 REBARS. (SEE STD. 420001)

SIDEWALK DETAIL AT INLETS
NOT TO SCALE

ROUTE	SECTION	COUNTY	TOTAL SHEETS	SHEET NUMBER
N/A	12-00127-00-SW	JACKSON	21	5
JOB NO. C-99-502-13		CONTRACT: 99506		
CITY OF CARBONDALE				

STA 5+26 LT
 PC CONC SIDEWALK 4 - 128 SQ FT
 DETECTABLE WARNINGS - 10 SQ FT
 COMB CC&G TB6.24 AEP - 15 FT
 COMB CURB GUTTER REM - 15 FT
 SIDEWALK REM - 128 SQ FT

STA 4+58 LT
 PC CONC SIDEWALK 4 - 147 SQ FT
 DETECTABLE WARNINGS - 10 SQ FT
 COMB CC&G TB6.18 AEP - 21 FT
 COMB CURB GUTTER REM - 21 FT
 SIDEWALK REM - 159 SQ FT

NOTE: STEP TO BE ADDED TO TOP OF EXISTING STAIRS

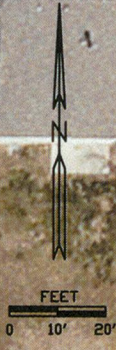
STA 3+71 LT TO 3+94 LT LT
 PC CONC SIDEWALK 4 - 161 SQ FT
 DETECTABLE WARNINGS - 10 SQ FT
 COMB CC&G TB6.18 AEP - 27 FT
 COMB CURB GUTTER REM - 27 FT
 SIDEWALK REM - 161 SQ FT

STA 0+00 RT TO STA 3+96 RT
 PC CONC SIDEWALK 4 - 2050 SQ FT
 DETECTABLE WARNINGS - 10 SQ FT
 SIDEWALK REM - 155 SQ FT



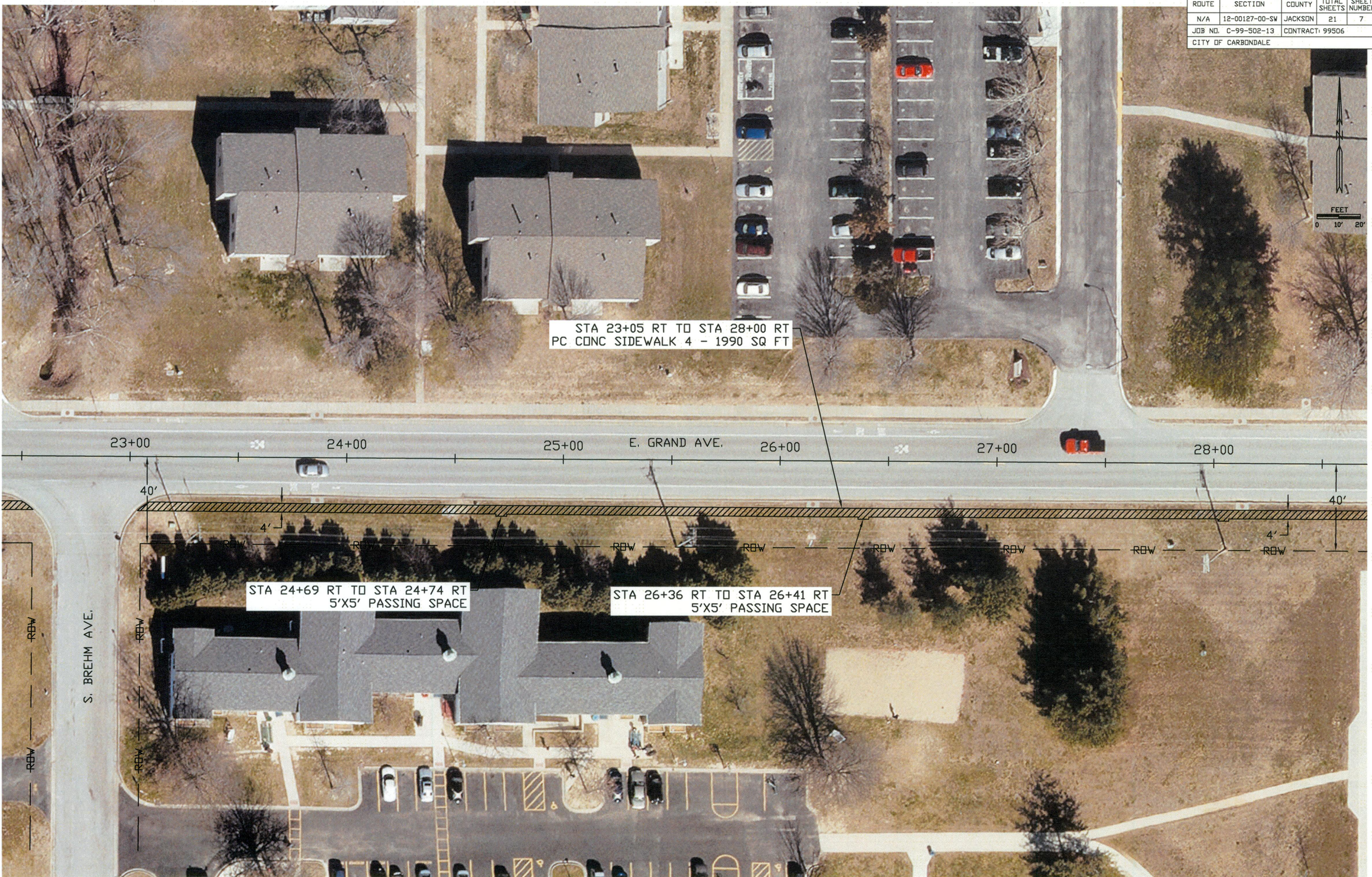
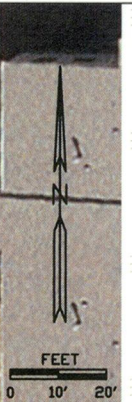
GRAND AVENUE SIDEWALK IMPROVEMENTS

ROUTE	SECTION	COUNTY	TOTAL SHEETS	SHEET NUMBER
N/A	12-00127-00-SW	JACKSON	21	6
JOB NO. C-99-502-13		CONTRACT: 99506		
CITY OF CARBONDALE				



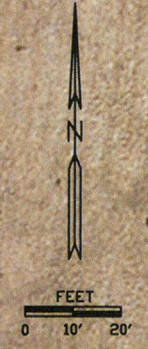
GRAND AVENUE SIDEWALK IMPROVEMENTS

ROUTE	SECTION	COUNTY	TOTAL SHEETS	SHEET NUMBER
N/A	12-00127-00-SW	JACKSON	21	7
JOB NO. C-99-502-13		CONTRACT: 99506		
CITY OF CARBONDALE				



GRAND AVENUE SIDEWALK IMPROVEMENTS

ROUTE	SECTION	COUNTY	TOTAL SHEETS	SHEET NUMBER
N/A	12-00127-00-SW	JACKSON	21	8
JOB NO. C-99-502-13		CONTRACT: 99506		
CITY OF CARBONDALE				



STA 28+00 RT TO STA 31+39 RT
PC CONC SIDEWALK 4 - 1366 SQ FT

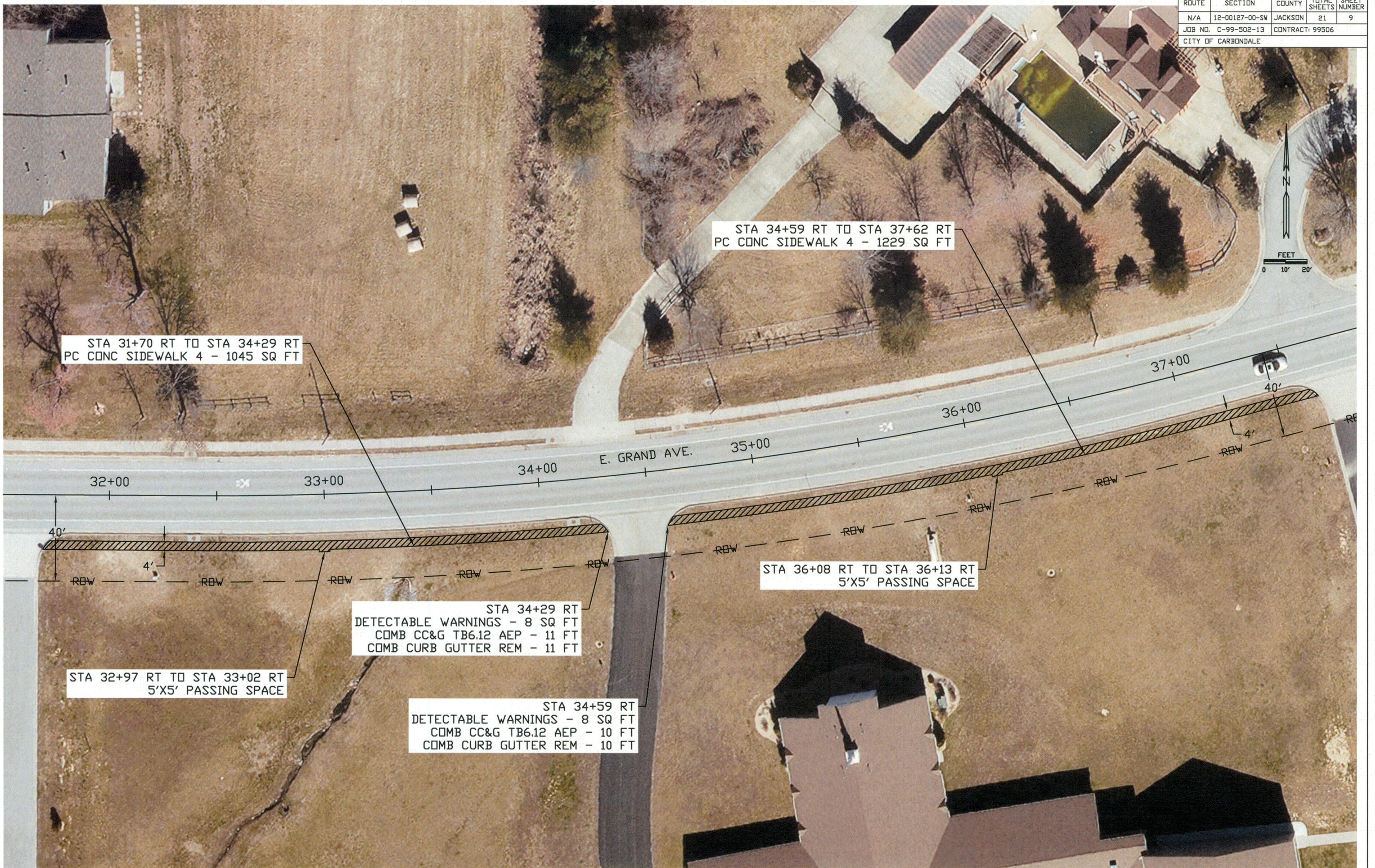
STA 28+02 RT TO STA 28+07 RT
5'X5' PASSING SPACE

STA 29+69 RT TO STA 29+74 RT
5'X5' PASSING SPACE

STA 31+39 RT
DETECTABLE WARNINGS - 8 SQ FT
COMB CC&G TB6.12 AEP - 17 FT
COMB CURB GUTTER REM - 17 FT

STA 31+70 RT
DETECTABLE WARNINGS - 8 SQ FT
COMB CC&G TB6.12 AEP - 12 FT
COMB CURB GUTTER REM - 12 FT

ROUTE	SECTION	COUNTY	TOTAL SHEETS	SHEET NUMBER
N/A	12-00127-00-SW	JACKSON	21	9
JOB NO. C-99-502-13		CONTRACT 99506		
CITY OF CARBONDALE				



STA 31+70 RT TO STA 34+29 RT
PC CONC SIDEWALK 4 - 1045 SQ FT

STA 34+59 RT TO STA 37+62 RT
PC CONC SIDEWALK 4 - 1229 SQ FT

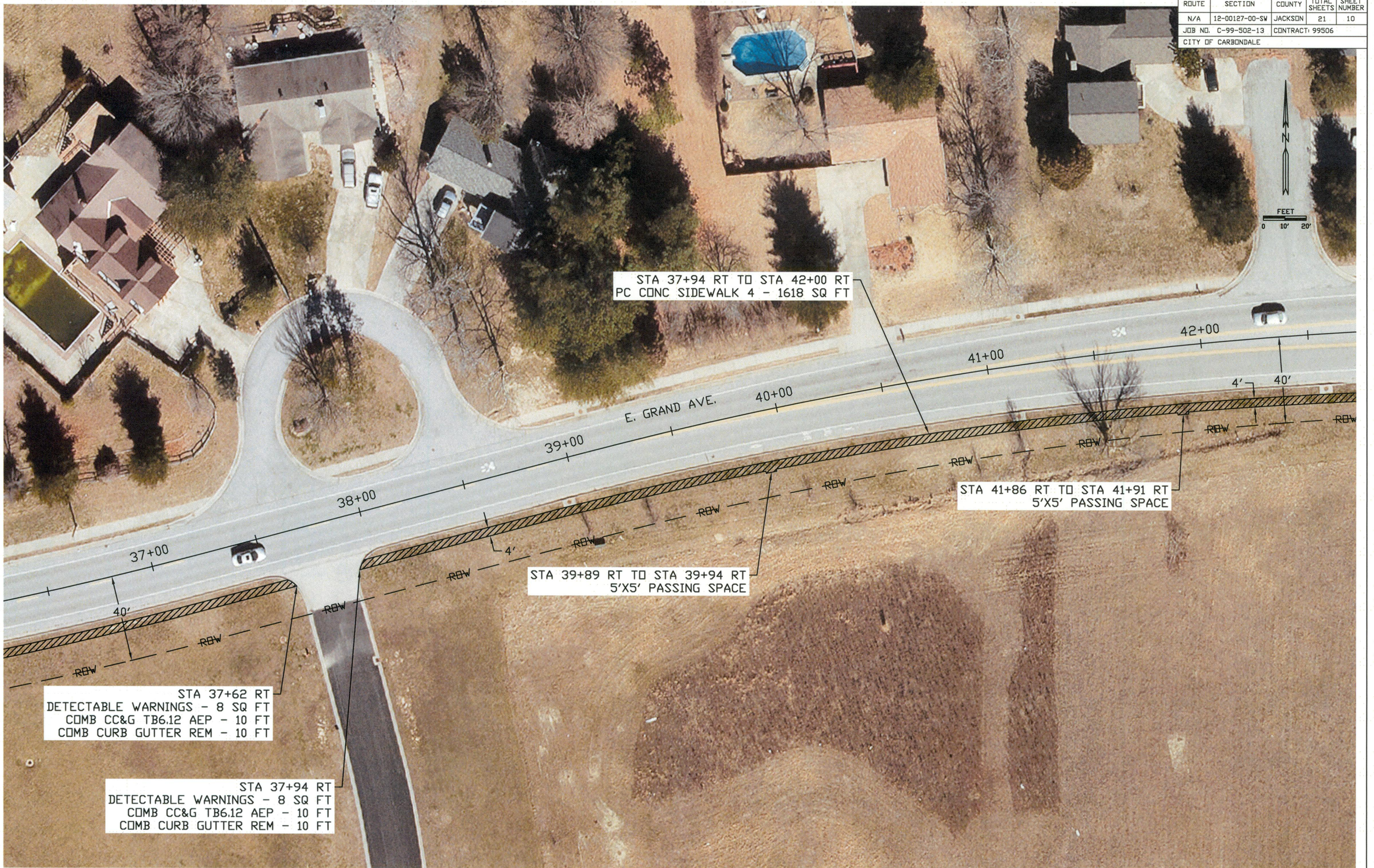
STA 34+29 RT
DETECTABLE WARNINGS - 8 SQ FT
COMB CC&G TB6.12 AEP - 11 FT
COMB CURB GUTTER REM - 11 FT

STA 32+97 RT TO STA 33+02 RT
5'X5' PASSING SPACE

STA 34+59 RT
DETECTABLE WARNINGS - 8 SQ FT
COMB CC&G TB6.12 AEP - 10 FT
COMB CURB GUTTER REM - 10 FT

STA 36+08 RT TO STA 36+13 RT
5'X5' PASSING SPACE

ROUTE	SECTION	COUNTY	TOTAL SHEETS	SHEET NUMBER
N/A	12-00127-00-SW	JACKSON	21	10
JOB NO. C-99-502-13		CONTRACT: 99506		
CITY OF CARBONDALE				



STA 37+94 RT TO STA 42+00 RT
PC CONC SIDEWALK 4 - 1618 SQ FT

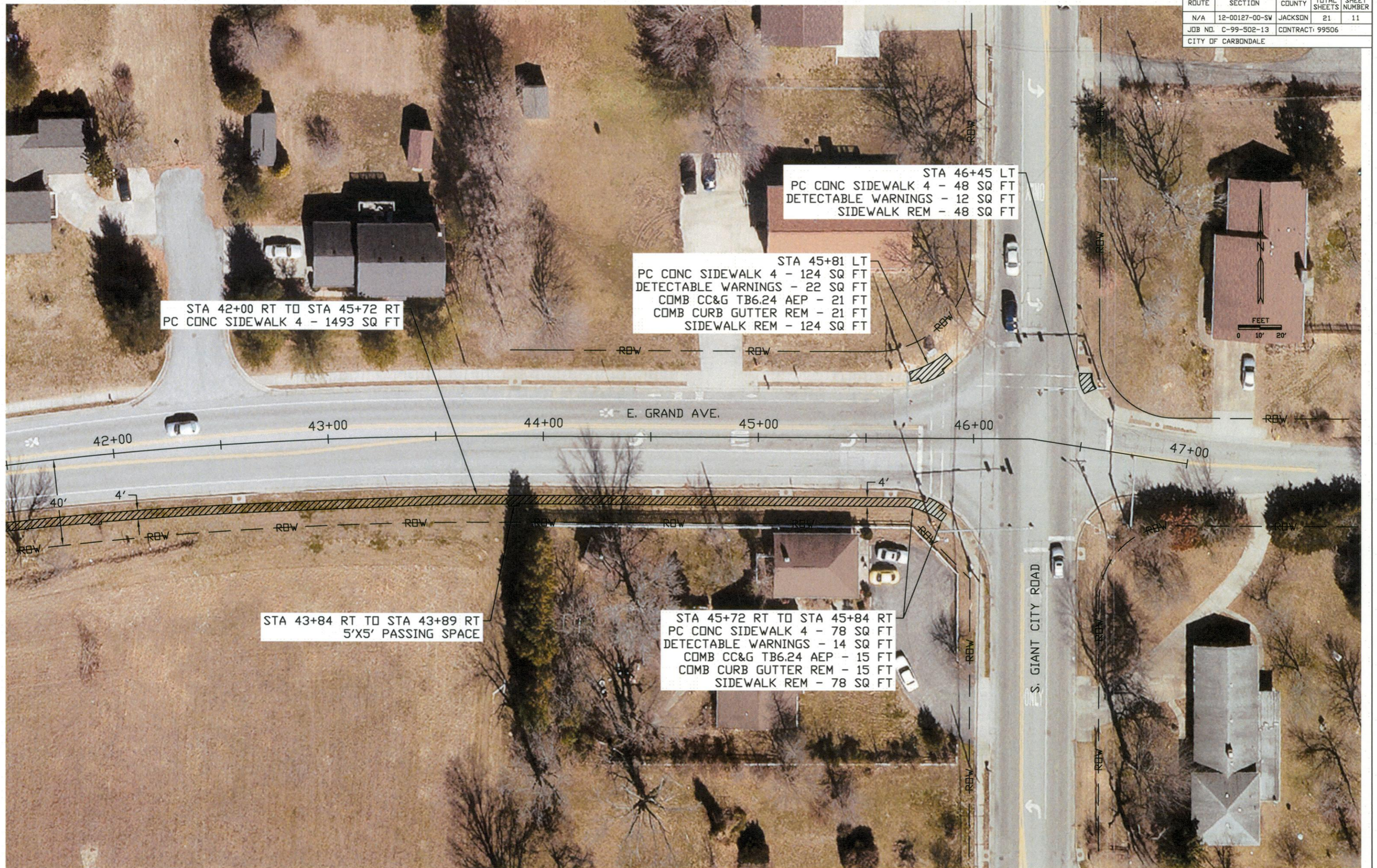
STA 41+86 RT TO STA 41+91 RT
5'X5' PASSING SPACE

STA 39+89 RT TO STA 39+94 RT
5'X5' PASSING SPACE

STA 37+62 RT
DETECTABLE WARNINGS - 8 SQ FT
COMB CC&G TB6.12 AEP - 10 FT
COMB CURB GUTTER REM - 10 FT

STA 37+94 RT
DETECTABLE WARNINGS - 8 SQ FT
COMB CC&G TB6.12 AEP - 10 FT
COMB CURB GUTTER REM - 10 FT

ROUTE	SECTION	COUNTY	TOTAL SHEETS	SHEET NUMBER
N/A	12-00127-00-SW	JACKSON	21	11
JOB NO. C-99-502-13		CONTRACT: 99506		
CITY OF CARBONDALE				



STA 42+00 RT TO STA 45+72 RT
PC CONC SIDEWALK 4 - 1493 SQ FT

STA 45+81 LT
PC CONC SIDEWALK 4 - 124 SQ FT
DETECTABLE WARNINGS - 22 SQ FT
COMB CC&G TB6.24 AEP - 21 FT
COMB CURB GUTTER REM - 21 FT
SIDEWALK REM - 124 SQ FT

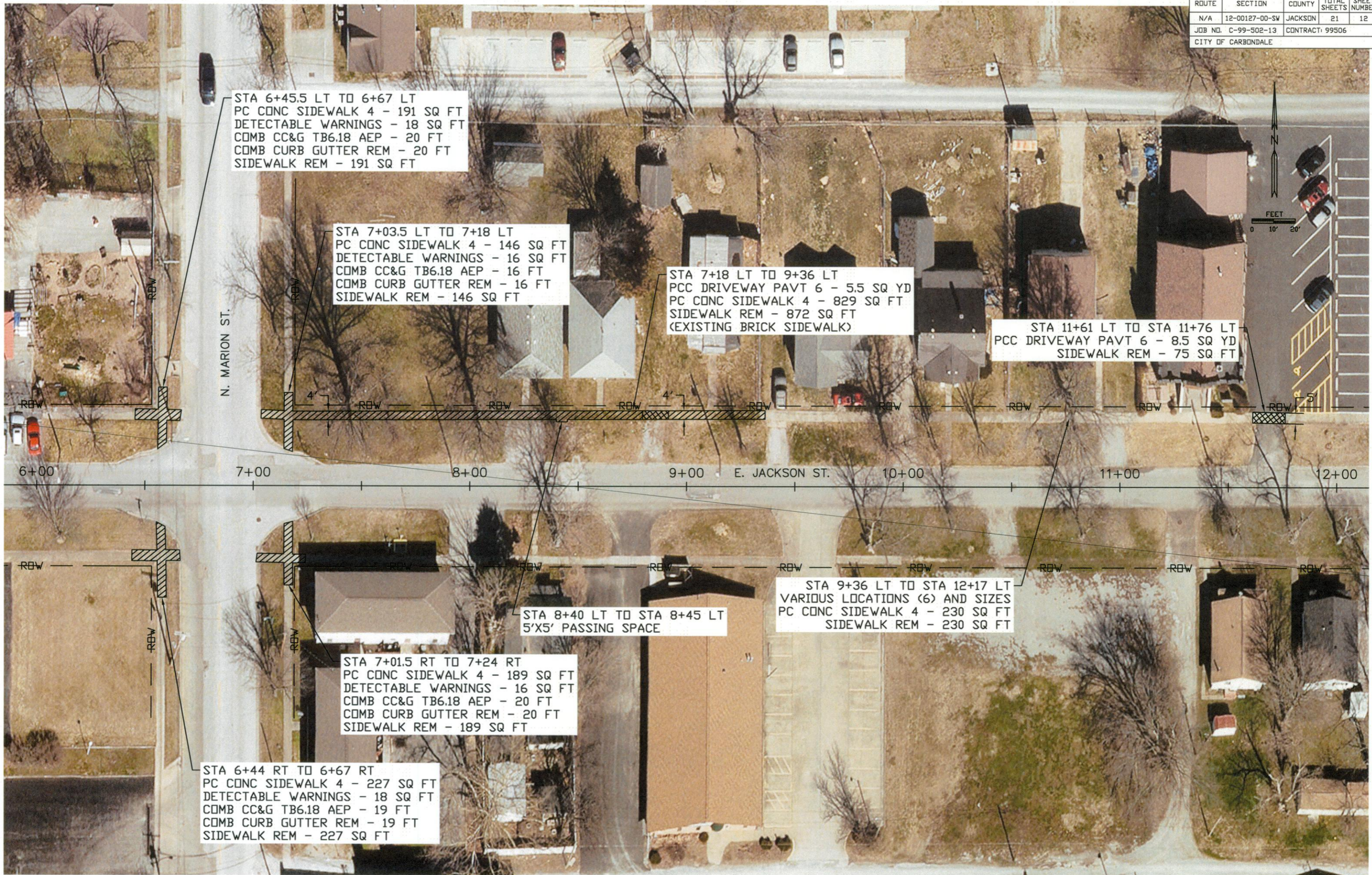
STA 46+45 LT
PC CONC SIDEWALK 4 - 48 SQ FT
DETECTABLE WARNINGS - 12 SQ FT
SIDEWALK REM - 48 SQ FT

STA 43+84 RT TO STA 43+89 RT
5'X5' PASSING SPACE

STA 45+72 RT TO STA 45+84 RT
PC CONC SIDEWALK 4 - 78 SQ FT
DETECTABLE WARNINGS - 14 SQ FT
COMB CC&G TB6.24 AEP - 15 FT
COMB CURB GUTTER REM - 15 FT
SIDEWALK REM - 78 SQ FT

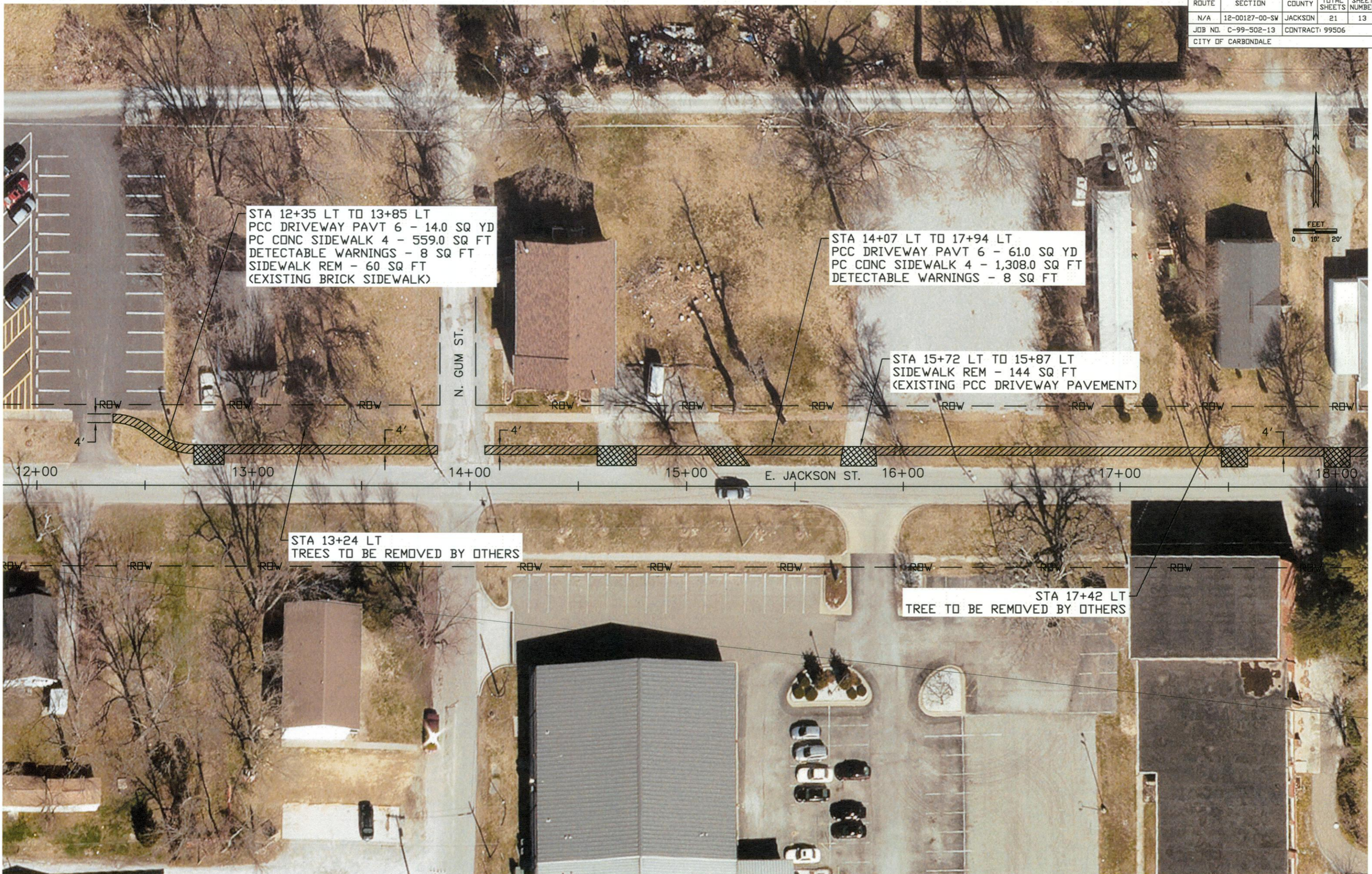
GRAND AVENUE SIDEWALK IMPROVEMENTS

ROUTE	SECTION	COUNTY	TOTAL SHEETS	SHEET NUMBER
N/A	12-00127-00-SW	JACKSON	21	12
JOB NO. C-99-502-13		CONTRACT# 99506		
CITY OF CARBONDALE				



JACKSON STREET SIDEWALK IMPROVEMENTS

ROUTE	SECTION	COUNTY	TOTAL SHEETS	SHEET NUMBER
N/A	12-00127-00-SW	JACKSON	21	13
JOB NO. C-99-502-13		CONTRACT: 99506		
CITY OF CARBONDALE				



STA 12+35 LT TO 13+85 LT
 PCC DRIVEWAY PAVT 6 - 14.0 SQ YD
 PC CONC SIDEWALK 4 - 559.0 SQ FT
 DETECTABLE WARNINGS - 8 SQ FT
 SIDEWALK REM - 60 SQ FT
 (EXISTING BRICK SIDEWALK)

STA 14+07 LT TO 17+94 LT
 PCC DRIVEWAY PAVT 6 - 61.0 SQ YD
 PC CONC SIDEWALK 4 - 1,308.0 SQ FT
 DETECTABLE WARNINGS - 8 SQ FT

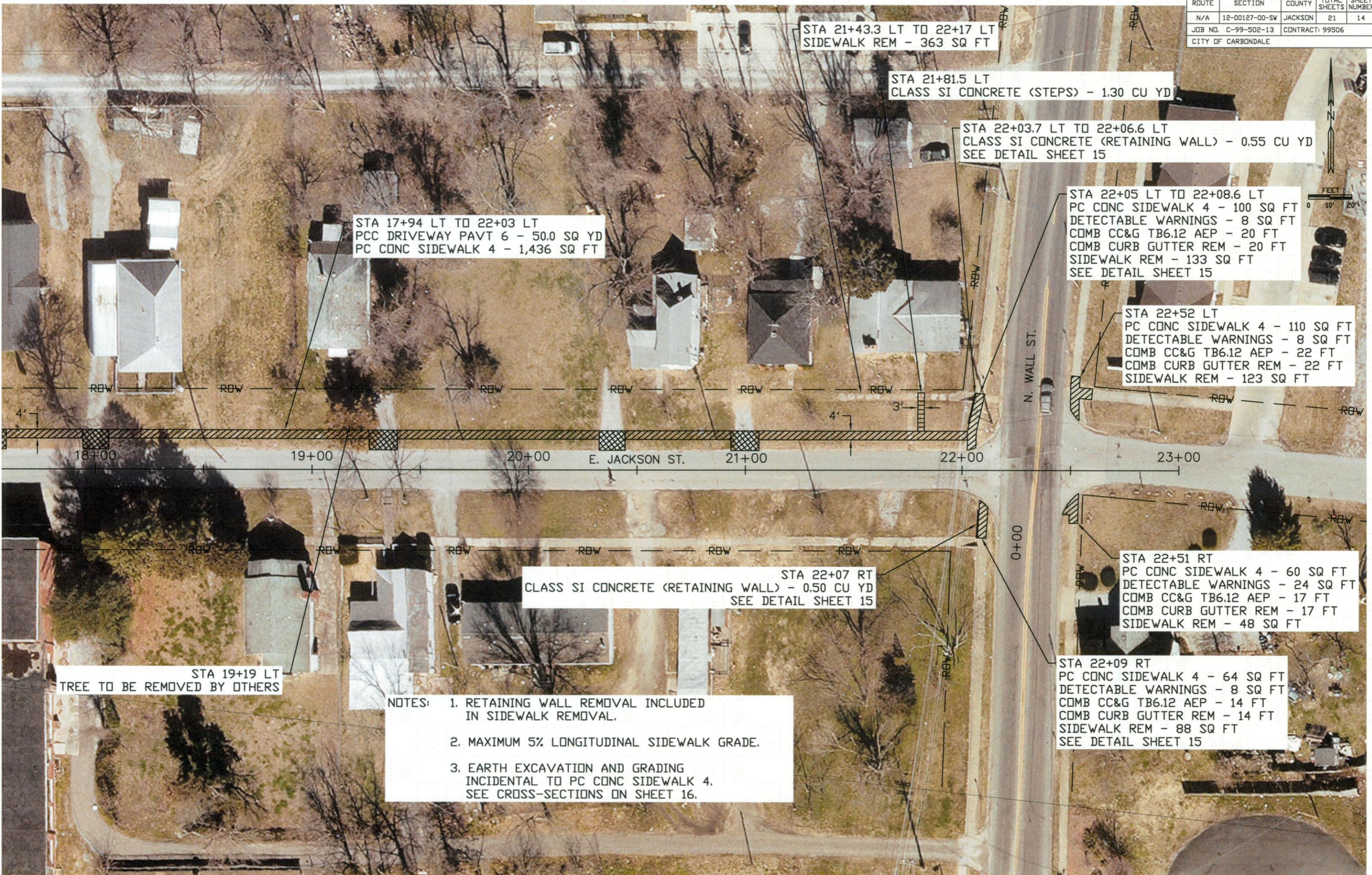
STA 15+72 LT TO 15+87 LT
 SIDEWALK REM - 144 SQ FT
 (EXISTING PCC DRIVEWAY PAVEMENT)

STA 13+24 LT
 TREES TO BE REMOVED BY OTHERS

STA 17+42 LT
 TREE TO BE REMOVED BY OTHERS

JACKSON STREET SIDEWALK IMPROVEMENTS

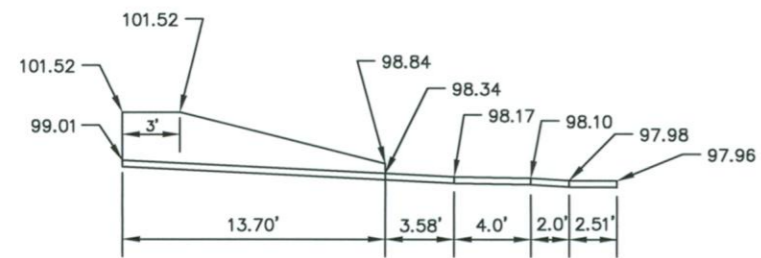
ROUTE	SECTION	COUNTY	TOTAL SHEETS	SHEET NUMBER
N/A	12-00127-00-SW	JACKSON	21	14
JOB NO. C-99-502-13		CONTRACT: 99506		
CITY OF CARBONDALE				



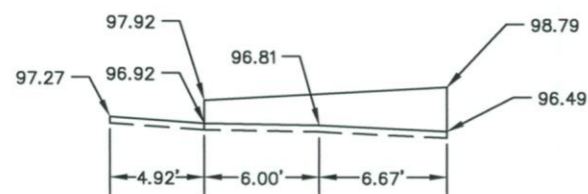
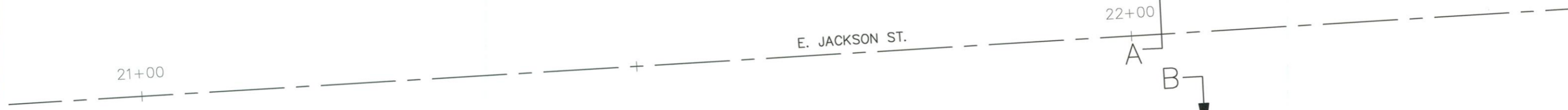
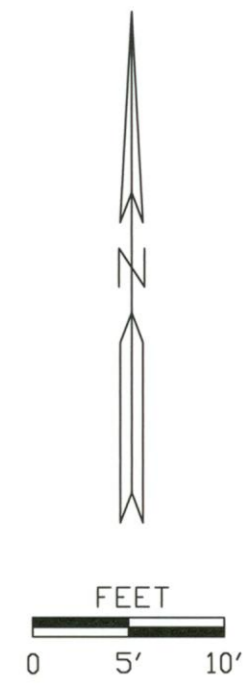
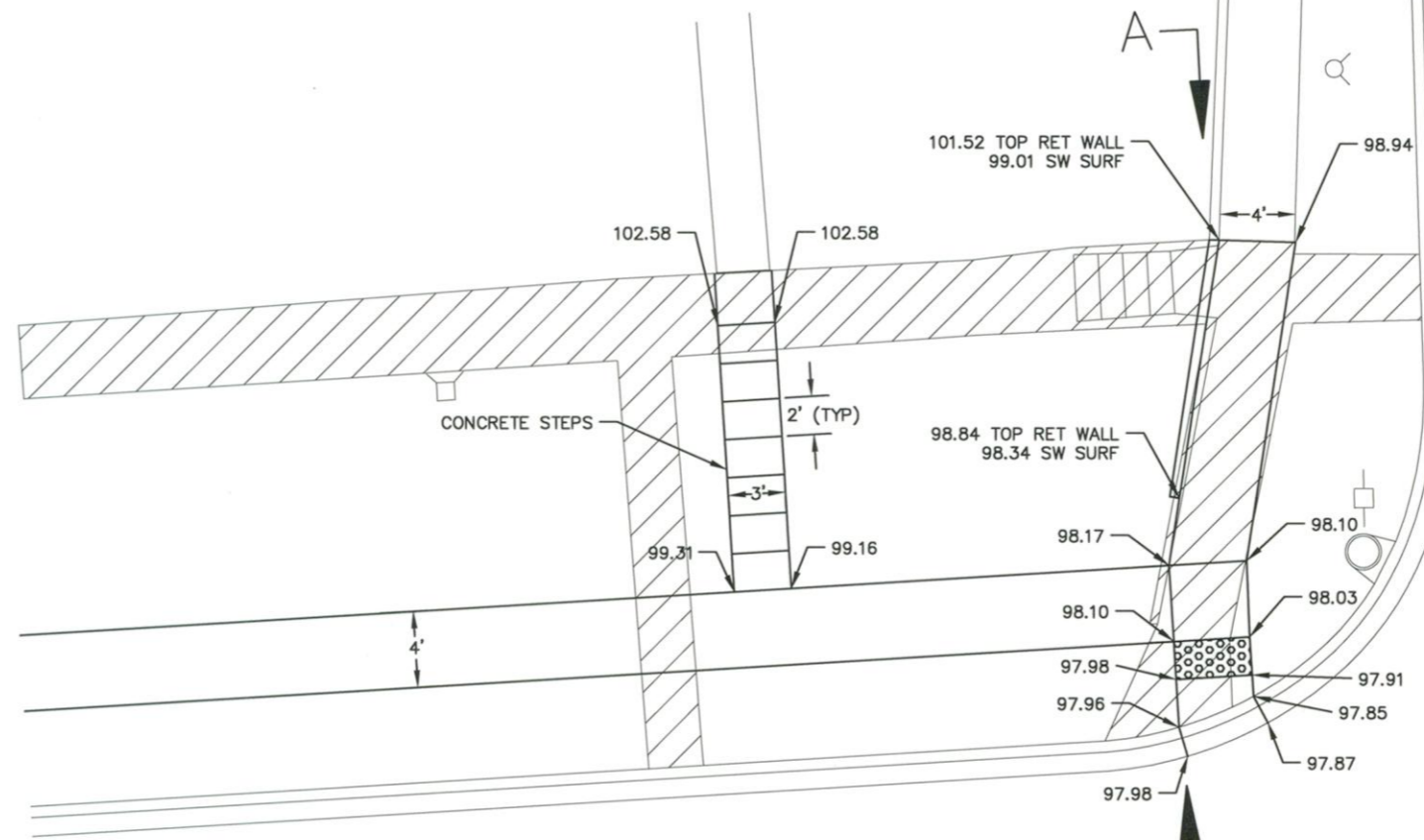
STA 19+19 LT
TREE TO BE REMOVED BY OTHERS

- NOTES:
1. RETAINING WALL REMOVAL INCLUDED IN SIDEWALK REMOVAL.
 2. MAXIMUM 5% LONGITUDINAL SIDEWALK GRADE.
 3. EARTH EXCAVATION AND GRADING INCIDENTAL TO PC CONC SIDEWALK 4. SEE CROSS-SECTIONS ON SHEET 16.

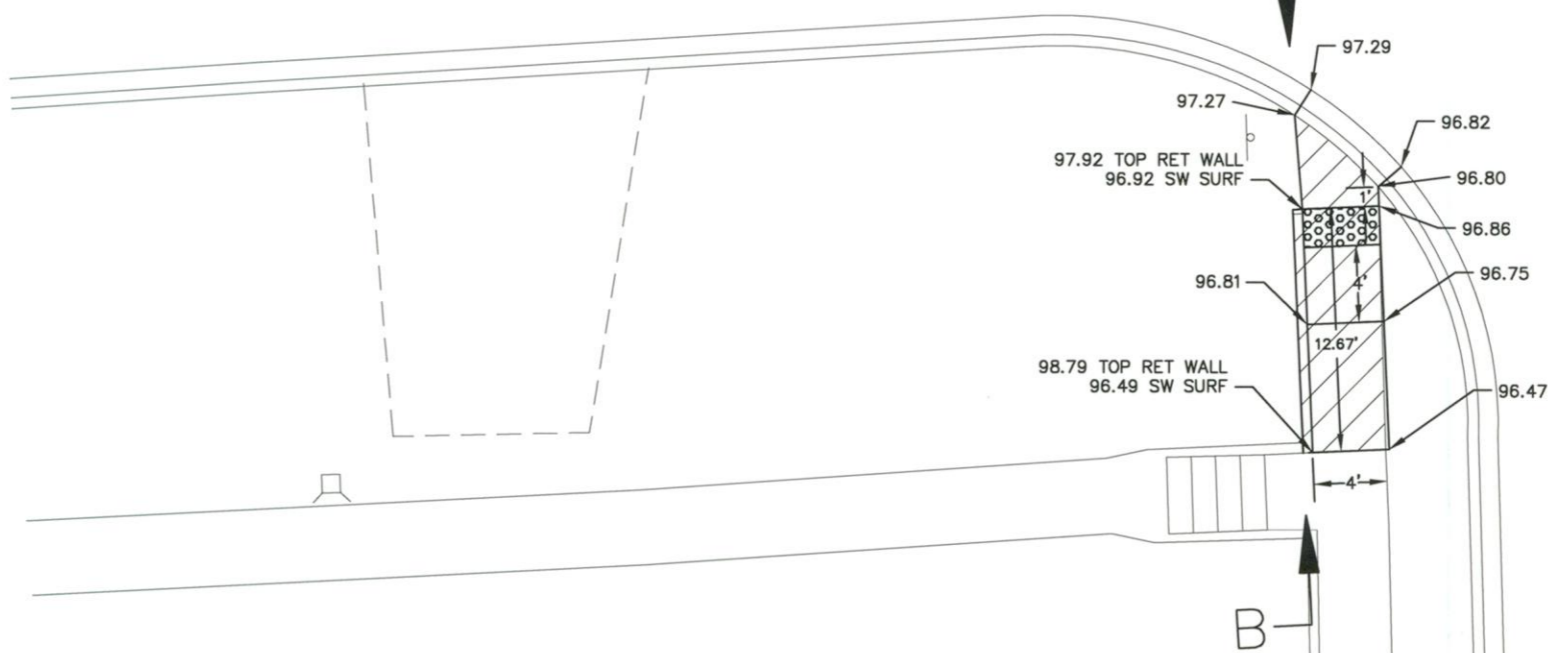
ROUTE	SECTION	COUNTY	TOTAL SHEETS	SHEET NUMBER
N/A	12-00127-00-SW	JACKSON	21	15
JOB NO. C-99-502-13		CONTRACT: 99506		
CITY OF CARBONDALE				



SEC. A-A
SCALE: 1"=10'



SEC. B-B
SCALE: 1"=10'

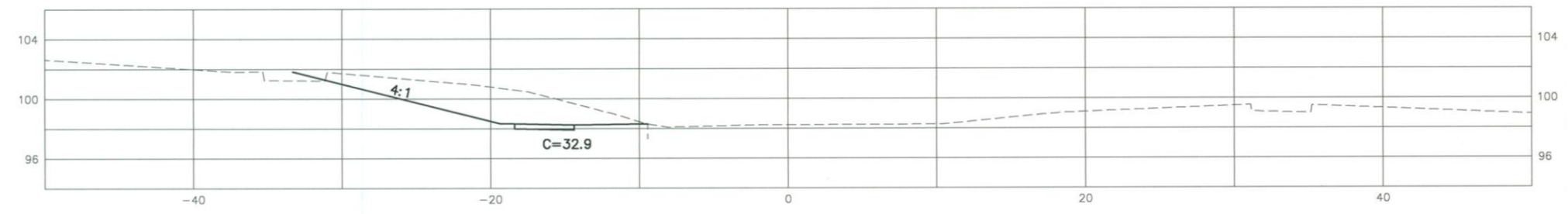


SIDWALK REMOVAL -

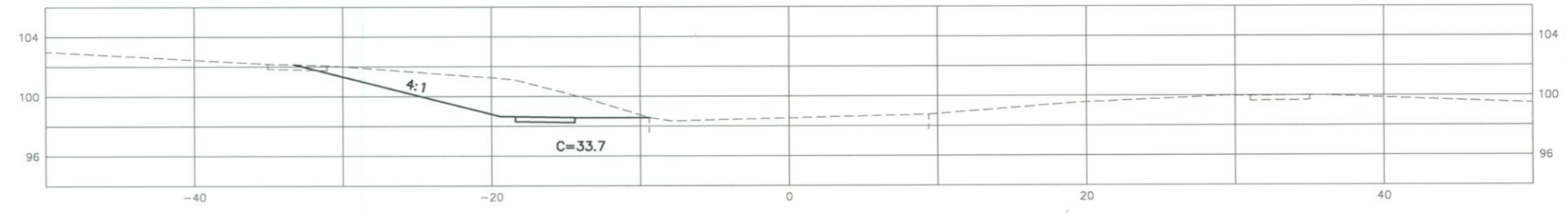
NOTE: SEE RETAINING WALL AND CONCRETE STEP DETAILS ON SHEET 4.

ROUTE	SECTION	COUNTY	TOTAL SHEETS	SHEET NUMBER
N/A	12-00127-00-SW	JACKSON	21	16
JOB NO. C-99-502-13		CONTRACT: 99506		
CITY OF CARBONDALE				

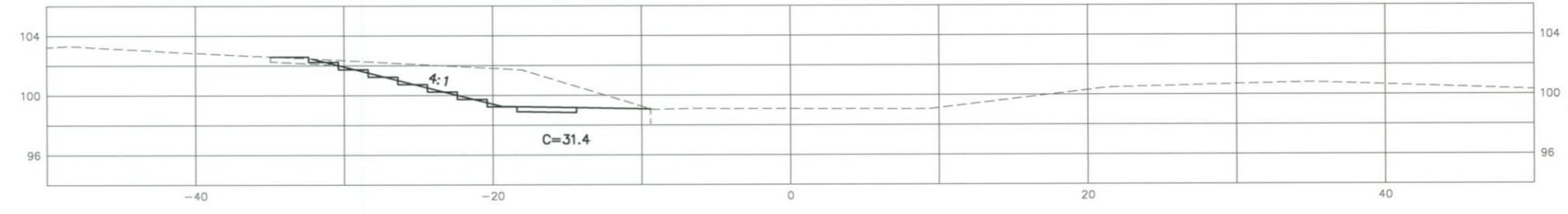
22+00



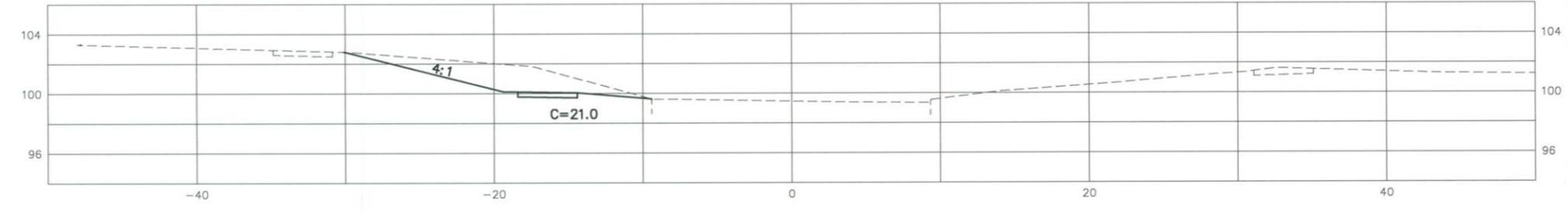
21+93.50



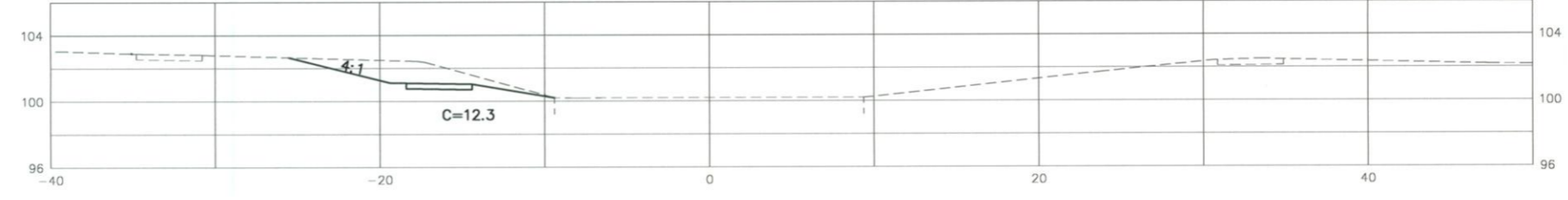
21+81.50



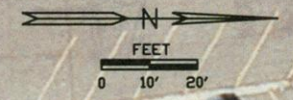
21+64



21+44



ROUTE	SECTION	COUNTY	TOTAL SHEETS	SHEET NUMBER
N/A	12-00127-00-SW	JACKSON	21	17
JOB NO. C-99-502-13		CONTRACT: 99506		
CITY OF CARBONDALE				



STA 2+19 LT TO STA 2+28 LT
 PC CONC SIDEWALK 4 - 36 SQ FT
 DETECTABLE WARNINGS - 8 SQ FT
 COMB CC&G TB6.12 AEP - 10 FT
 COMB CURB GUTTER REM - 10 FT
 SIDEWALK REM - 36 SQ FT

STA 3+64 LT TO STA 3+73 LT
 PC CONC SIDEWALK 4 - 36 SQ FT
 DETECTABLE WARNINGS - 8 SQ FT
 COMB CC&G TB6.12 AEP - 14 FT
 COMB CURB GUTTER REM - 14 FT
 SIDEWALK REM - 36 SQ FT

STA 5+34.2 LT TO STA 5+43.2 LT
 PC CONC SIDEWALK 4 - 36 SQ FT
 DETECTABLE WARNINGS - 8 SQ FT
 COMB CC&G TB6.12 AEP - 15 FT
 COMB CURB GUTTER REM - 15 FT
 SIDEWALK REM - 36 SQ FT

STA 2+03.4 LT TO STA 2+21.5 LT
 PCC DRIVEWAY PAVT 6 - 15 SQ YD
 SIDEWALK REM - 126 SQ FT
 (EXISTING PCC DRIVEWAY PAVEMENT)

STA 3+58 LT
 PC CONC SIDEWALK 4 - 48 SQ FT
 DETECTABLE WARNINGS - 8 SQ FT
 COMB CC&G TB6.12 AEP - 8 FT
 COMB CURB GUTTER REM - 8 FT

STA 5+14 LT TO STA 5+20 LT
 PC CONC SIDEWALK 4 - 24 SQ FT
 DETECTABLE WARNINGS - 8 SQ FT
 COMB CC&G TB6.12 AEP - 11 FT
 COMB CURB GUTTER REM - 11 FT
 SIDEWALK REM - 24 SQ FT

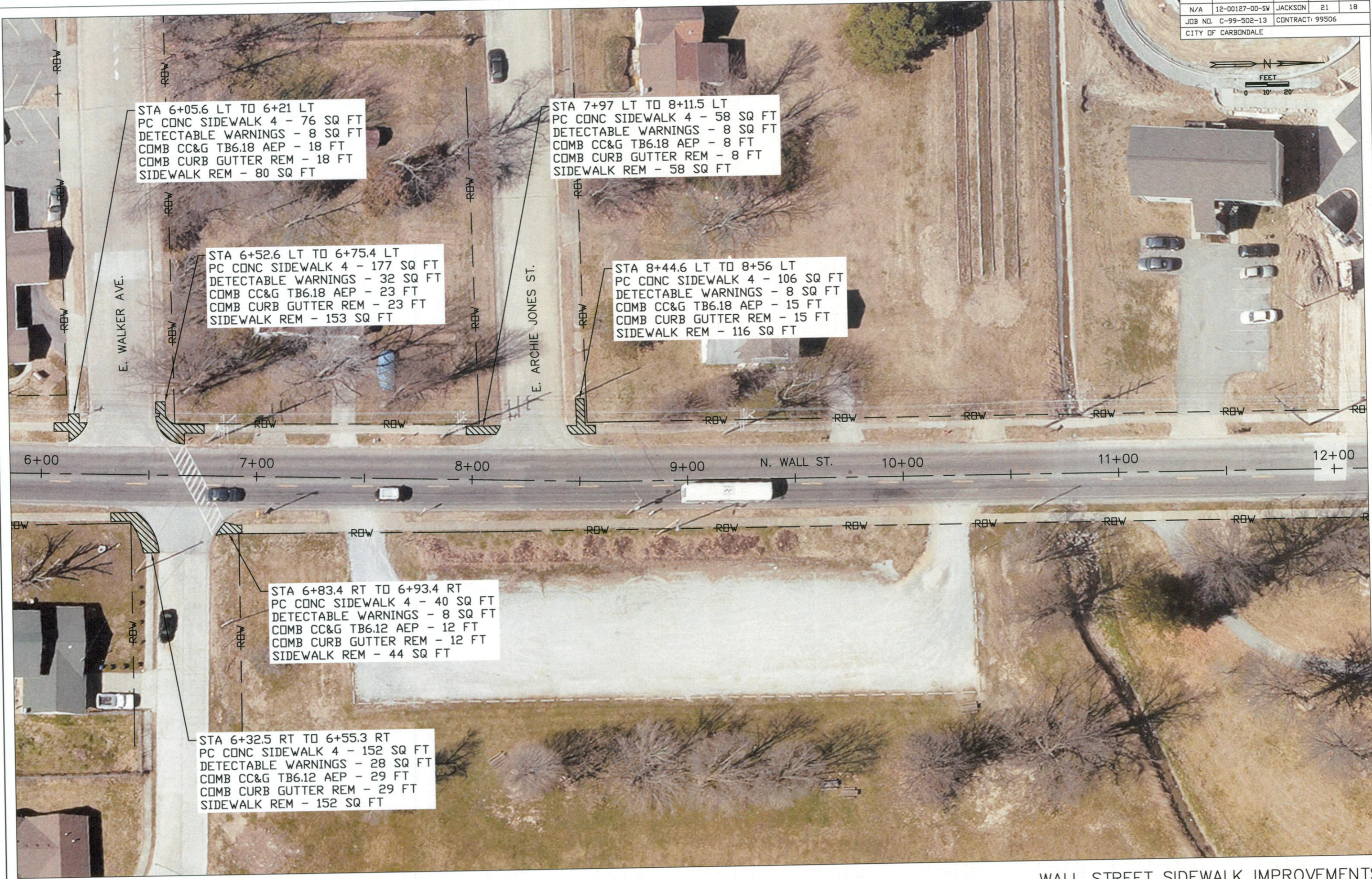
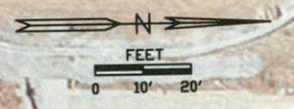
STA 1+93 LT TO STA 2+04.6 LT
 PC CONC SIDEWALK 4 - 47 SQ FT
 DETECTABLE WARNINGS - 8 SQ FT
 COMB CC&G TB6.12 AEP - 14 FT
 COMB CURB GUTTER REM - 14 FT
 SIDEWALK REM - 47 SQ FT

STA 4+05 LT TO 4+14.5 LT
 PC CONC SIDEWALK 4 - 38 SQ FT
 DETECTABLE WARNINGS - 8 SQ FT
 COMB CC&G TB6.12 AEP - 9 FT
 COMB CURB GUTTER REM - 9 FT
 SIDEWALK REM - 38 SQ FT

STA 3+58.3 RT TO STA 3+76.8 RT
 PC CONC SIDEWALK 4 - 112 SQ FT
 DETECTABLE WARNINGS - 16 SQ FT
 COMB CC&G TB6.12 AEP - 8 FT
 COMB CURB GUTTER REM - 8 FT
 SIDEWALK REM - 112 SQ FT

STA 4+02.8 RT TO 4+23 RT
 PC CONC SIDEWALK 4 - 81 SQ FT
 DETECTABLE WARNINGS - 8 SQ FT
 COMB CC&G TB6.12 AEP - 9 FT
 COMB CURB GUTTER REM - 9 FT
 SIDEWALK REM - 81 SQ FT

ROUTE	SECTION	COUNTY	TOTAL SHEETS	SHEET NUMBER
N/A	12-00127-00-SW	JACKSON	21	18
JOB NO. C-99-502-13		CONTRACT# 99506		
CITY OF CARBONDALE				



STA 6+05.6 LT TO 6+21 LT
 PC CONC SIDEWALK 4 - 76 SQ FT
 DETECTABLE WARNINGS - 8 SQ FT
 COMB CC&G TB6.18 AEP - 18 FT
 COMB CURB GUTTER REM - 18 FT
 SIDEWALK REM - 80 SQ FT

STA 7+97 LT TO 8+11.5 LT
 PC CONC SIDEWALK 4 - 58 SQ FT
 DETECTABLE WARNINGS - 8 SQ FT
 COMB CC&G TB6.18 AEP - 8 FT
 COMB CURB GUTTER REM - 8 FT
 SIDEWALK REM - 58 SQ FT

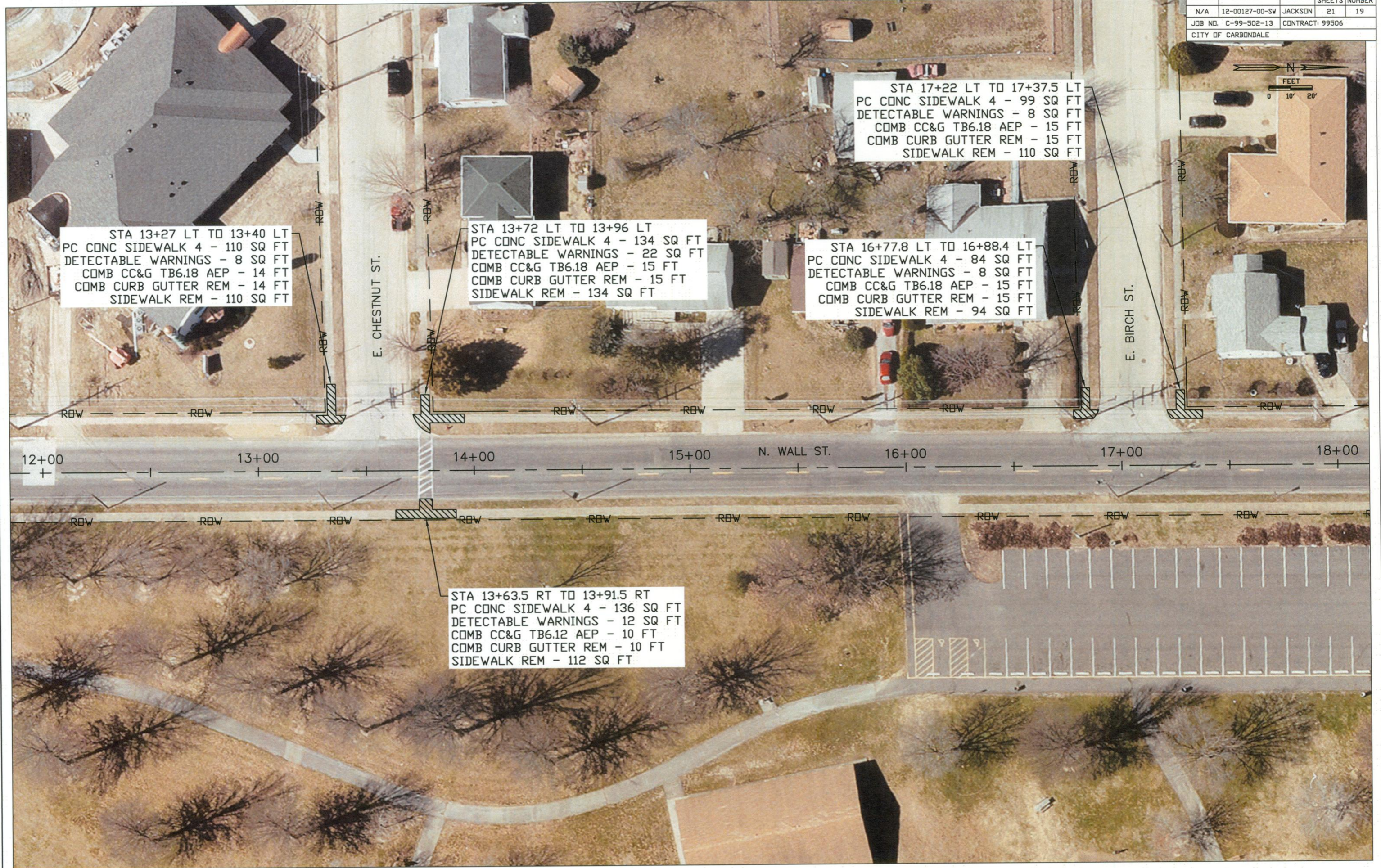
STA 6+52.6 LT TO 6+75.4 LT
 PC CONC SIDEWALK 4 - 177 SQ FT
 DETECTABLE WARNINGS - 32 SQ FT
 COMB CC&G TB6.18 AEP - 23 FT
 COMB CURB GUTTER REM - 23 FT
 SIDEWALK REM - 153 SQ FT

STA 8+44.6 LT TO 8+56 LT
 PC CONC SIDEWALK 4 - 106 SQ FT
 DETECTABLE WARNINGS - 8 SQ FT
 COMB CC&G TB6.18 AEP - 15 FT
 COMB CURB GUTTER REM - 15 FT
 SIDEWALK REM - 116 SQ FT

STA 6+83.4 RT TO 6+93.4 RT
 PC CONC SIDEWALK 4 - 40 SQ FT
 DETECTABLE WARNINGS - 8 SQ FT
 COMB CC&G TB6.12 AEP - 12 FT
 COMB CURB GUTTER REM - 12 FT
 SIDEWALK REM - 44 SQ FT

STA 6+32.5 RT TO 6+55.3 RT
 PC CONC SIDEWALK 4 - 152 SQ FT
 DETECTABLE WARNINGS - 28 SQ FT
 COMB CC&G TB6.12 AEP - 29 FT
 COMB CURB GUTTER REM - 29 FT
 SIDEWALK REM - 152 SQ FT

ROUTE	SECTION	COUNTY	TOTAL SHEETS	SHEET NUMBER
N/A	12-00127-00-SW	JACKSON	21	19
JOB NO. C-99-502-13		CONTRACT: 99506		
CITY OF CARBONDALE				



STA 13+27 LT TO 13+40 LT
 PC CONC SIDEWALK 4 - 110 SQ FT
 DETECTABLE WARNINGS - 8 SQ FT
 COMB CC&G TB6.18 AEP - 14 FT
 COMB CURB GUTTER REM - 14 FT
 SIDEWALK REM - 110 SQ FT

STA 13+72 LT TO 13+96 LT
 PC CONC SIDEWALK 4 - 134 SQ FT
 DETECTABLE WARNINGS - 22 SQ FT
 COMB CC&G TB6.18 AEP - 15 FT
 COMB CURB GUTTER REM - 15 FT
 SIDEWALK REM - 134 SQ FT

STA 17+22 LT TO 17+37.5 LT
 PC CONC SIDEWALK 4 - 99 SQ FT
 DETECTABLE WARNINGS - 8 SQ FT
 COMB CC&G TB6.18 AEP - 15 FT
 COMB CURB GUTTER REM - 15 FT
 SIDEWALK REM - 110 SQ FT

STA 16+77.8 LT TO 16+88.4 LT
 PC CONC SIDEWALK 4 - 84 SQ FT
 DETECTABLE WARNINGS - 8 SQ FT
 COMB CC&G TB6.18 AEP - 15 FT
 COMB CURB GUTTER REM - 15 FT
 SIDEWALK REM - 94 SQ FT

STA 13+63.5 RT TO 13+91.5 RT
 PC CONC SIDEWALK 4 - 136 SQ FT
 DETECTABLE WARNINGS - 12 SQ FT
 COMB CC&G TB6.12 AEP - 10 FT
 COMB CURB GUTTER REM - 10 FT
 SIDEWALK REM - 112 SQ FT

WALL STREET SIDEWALK IMPROVEMENTS

ROUTE	SECTION	COUNTY	TOTAL SHEETS	SHEET NUMBER
N/A	12-00127-00-SW	JACKSON	21	20
JOB NO. C-99-502-13		CONTRACT: 99506		
CITY OF CARBONDALE				



STA 19+76.4 LT TO 19+94 LT
 PC CONC SIDEWALK 4 - 119 SQ FT
 DETECTABLE WARNINGS - 18 SQ FT
 COMB CC&G TB6.18 AEP - 14 FT
 COMB CURB GUTTER REM - 14 FT
 SIDEWALK REM - 103 SQ FT

STA 20+27 LT TO 20+40 LT
 PC CONC SIDEWALK 4 - 93 SQ FT
 DETECTABLE WARNINGS - 8 SQ FT
 COMB CC&G TB6.18 AEP - 9 FT
 COMB CURB GUTTER REM - 9 FT
 SIDEWALK REM - 93 SQ FT

STA 23+59 LT TO 23+71.5 LT
 PC CONC SIDEWALK 4 - 83 SQ FT
 DETECTABLE WARNINGS - 8 SQ FT
 COMB CC&G TB6.18 AEP - 16 FT
 COMB CURB GUTTER REM - 16 FT
 SIDEWALK REM - 98 SQ FT

STA 23+13.5 LT TO 23+25 LT
 PC CONC SIDEWALK 4 - 79 SQ FT
 DETECTABLE WARNINGS - 8 SQ FT
 COMB CC&G TB6.18 AEP - 17 FT
 COMB CURB GUTTER REM - 17 FT
 SIDEWALK REM - 90 SQ FT

STA 19+82.6 RT TO 20+07.3 RT
 PC CONC SIDEWALK 4 - 123 SQ FT
 DETECTABLE WARNINGS - 12 SQ FT
 COMB CC&G TB6.12 AEP - 8 FT
 COMB CURB GUTTER REM - 8 FT
 SIDEWALK REM - 99 SQ FT

WALL STREET SIDEWALK IMPROVEMENTS

ROUTE	SECTION	COUNTY	TOTAL SHEETS	SHEET NUMBER
N/A	12-00127-00-SW	JACKSON	21	21
JOB NO. C-99-502-13		CONTRACT: 99506		
CITY OF CARBONDALE				



STA 27+01 LT TO 27+18 LT
 PC CONC SIDEWALK 4 - 98 SQ FT
 DETECTABLE WARNINGS - 12 SQ FT
 COMB CC&G TB6.18 AEP - 21 FT
 COMB CURB GUTTER REM - 21 FT
 SIDEWALK REM - 118 SQ FT

STA 26+51.3 LT TO 26+64 LT
 PC CONC SIDEWALK 4 - 85 SQ FT
 DETECTABLE WARNINGS - 18 SQ FT
 COMB CC&G TB6.18 AEP - 15 FT
 COMB CURB GUTTER REM - 15 FT
 SIDEWALK REM - 85 SQ FT

STA 29+70 LT TO 30+05 LT
 PC CONC SIDEWALK 4 - 247 SQ FT
 DETECTABLE WARNINGS - 24 SQ FT
 COMB CC&G TB6.18 AEP - 31 FT
 COMB CURB GUTTER REM - 31 FT
 SIDEWALK REM - 247 SQ FT

STA 28+70.6 LT TO 28+94.5 LT
 PC CONC SIDEWALK 4 - 130 SQ FT
 DETECTABLE WARNINGS - 30 SQ FT
 COMB CC&G TB6.18 AEP - 25 FT
 COMB CURB GUTTER REM - 25 FT
 SIDEWALK REM - 130 SQ FT

STA 27+24 LT TO 27+64 LT
 PC CONC SIDEWALK 4 - 160 SQ FT
 COMB CC&G TB6.12 AEP - 30 FT
 COMB CURB GUTTER REM - 30 FT
 SIDEWALK REM - 160 SQ FT

24+00 25+00 N. WALL ST. 26+00 27+00 28+00 29+00 30+00

STA 25+84 RT TO 26+18 RT
 PC CONC SIDEWALK 4 - 136 SQ FT
 DETECTABLE WARNINGS - 8 SQ FT
 COMB CC&G TB6.12 AEP - 8 FT
 COMB CURB GUTTER REM - 8 FT
 SIDEWALK REM - 136 SQ FT

STA 27+08 RT TO 27+17 RT
 PC CONC SIDEWALK 4 - 36 SQ FT
 SIDEWALK REM - 36 SQ FT

STA 26+62 RT TO 26+82 RT
 PC CONC SIDEWALK 4 - 89 SQ FT
 DETECTABLE WARNINGS - 12 SQ FT
 COMB CC&G TB6.12 AEP - 12 FT
 COMB CURB GUTTER REM - 12 FT
 SIDEWALK REM - 89 SQ FT

STA 28+81.7 RT TO 29+07 RT
 PC CONC SIDEWALK 4 - 161 SQ FT
 DETECTABLE WARNINGS - 12 SQ FT
 COMB CC&G TB6.12 AEP - 10 FT
 COMB CURB GUTTER REM - 10 FT
 SIDEWALK REM - 137 SQ FT